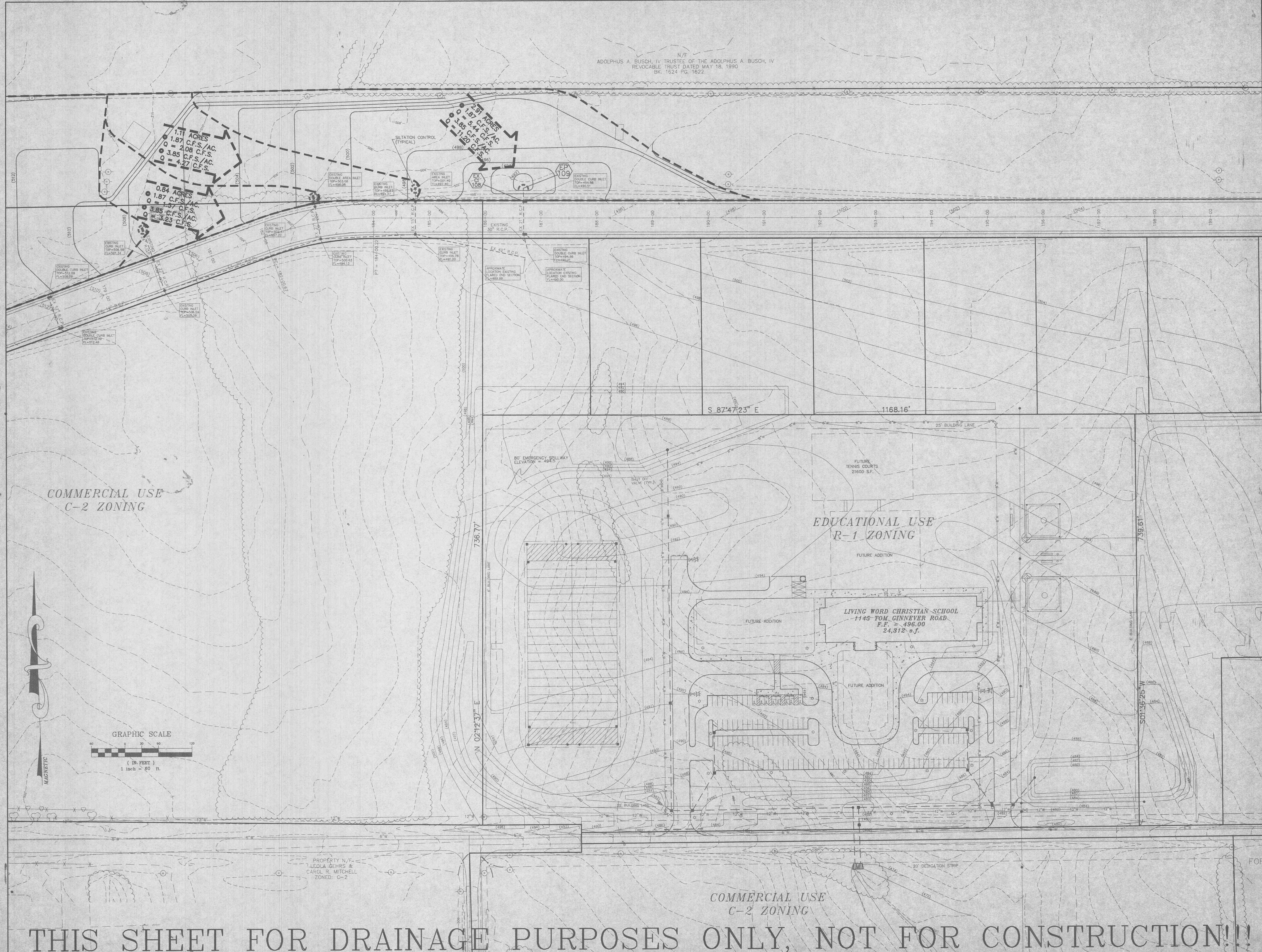


N/F
 ADOLPHUS A. BUSCH, IV TRUSTEE OF THE ADOLPHUS A. BUSCH, IV
 REVOCABLE TRUST DATED MAY 18, 1990
 BK 1624 PG. 1622

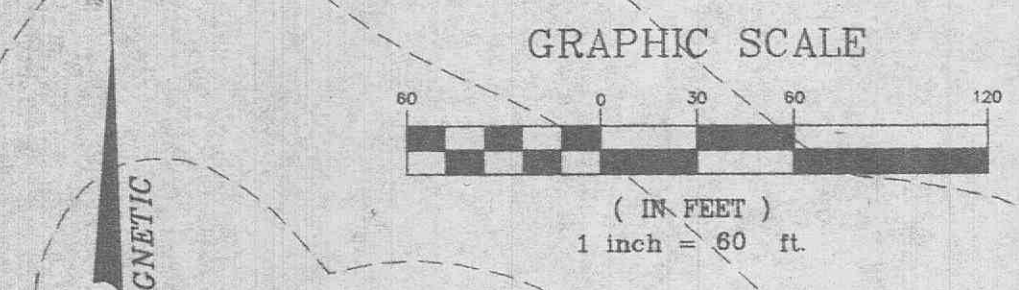


COMMERCIAL USE
 C-2 ZONING

EDUCATIONAL USE
 R-1 ZONING

LIVING WORD CHRISTIAN SCHOOL
 1145 TOM GINNEVER ROAD
 F.F. = 496.00
 24,312 s.f.

COMMERCIAL USE
 C-2 ZONING



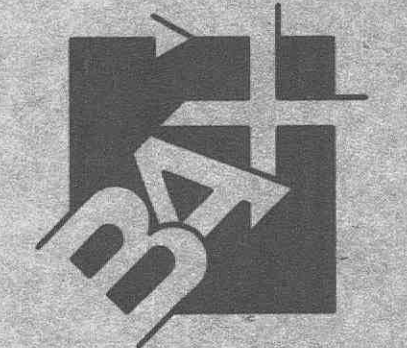
PROPERTY N/F
 LEOLA BEHRS &
 CAROL R MITCHELL
 ZONED: C-2

PREPARED FOR:
 T.R. HUGHES
 239 FOX HILL ROAD
 ST. CHARLES, MO 63301
 (314) 940-9300

DISCLAIMER OF RESPONSIBILITY
 I hereby certify that the documents intended to be submitted by my office are the work of this office, and I, as a duly licensed and Active Professional Engineer, am not aware of any fraud or other intentional or negligent misstatements or omissions in or on any part of the documents or engineering project of any.

Copyright 1999
 The Engineering Company, Inc.
 All Rights Reserved

REVISIONS
9-15-99 MSC REVISIONS



ENGINEERING
 PLANNING
 SURVEYING

1052 South Cloverleaf Drive
 St. Peters, MO. 63376-6445
 314-928-5552
 FAX 928-1718

8-27-99	DATE
97-92031	PROJECT NUMBER
5	OF 6
SHEET OF	FILE NAME
92031CON.DWG	FILE NAME
SC	CLH
DRAWN	CHECKED

THIS SHEET FOR DRAINAGE PURPOSES ONLY, NOT FOR CONSTRUCTION!!!

E:\DWG\000\000\000\000.dwg Mod Sep 15 17:04:44 1999 Plot on 11-30-01