

SANITARY SEWER PROFILES

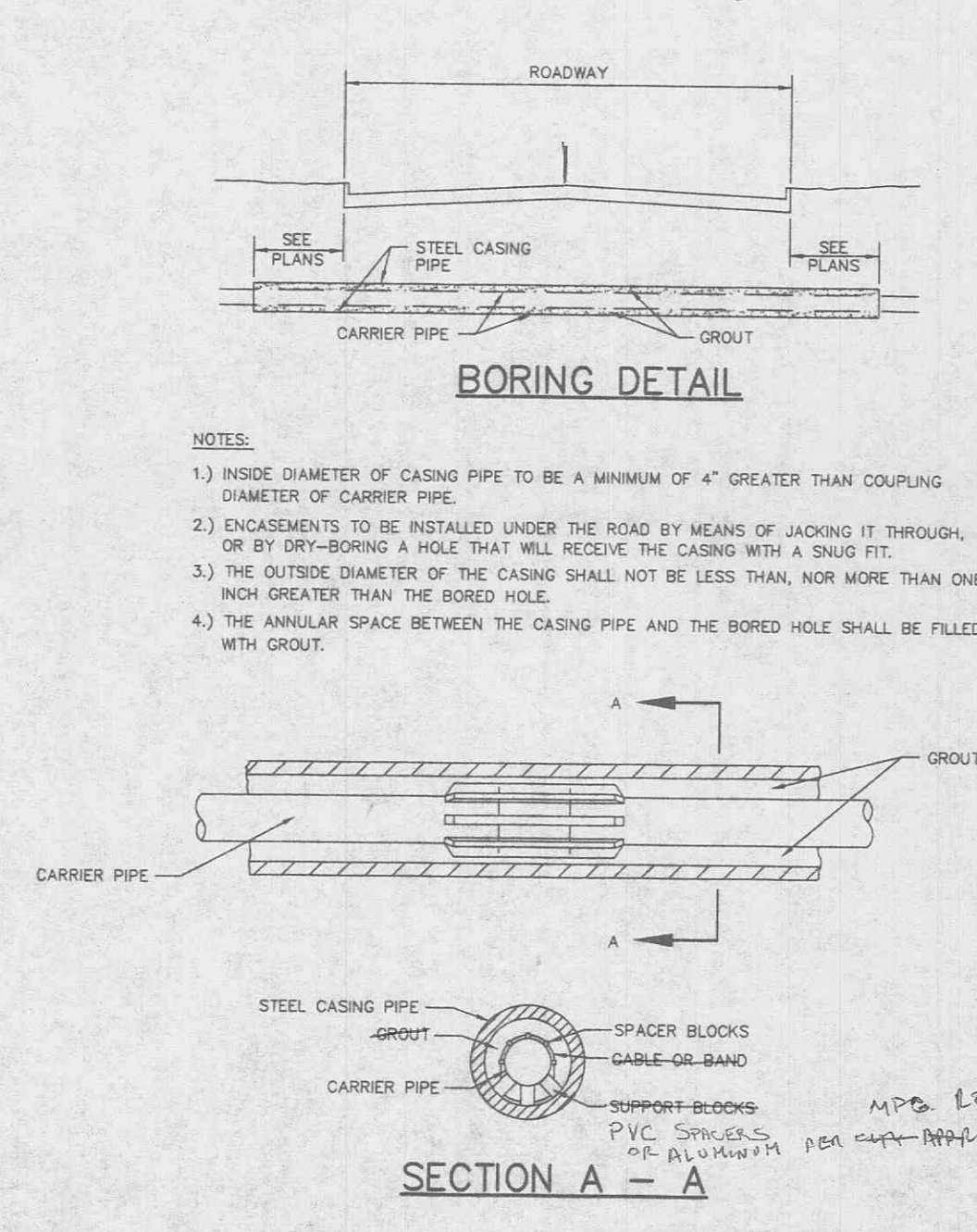
HORIZONTAL SCALE: 1" = 80'
VERTICAL SCALE: 1" = 10'

SDR 35

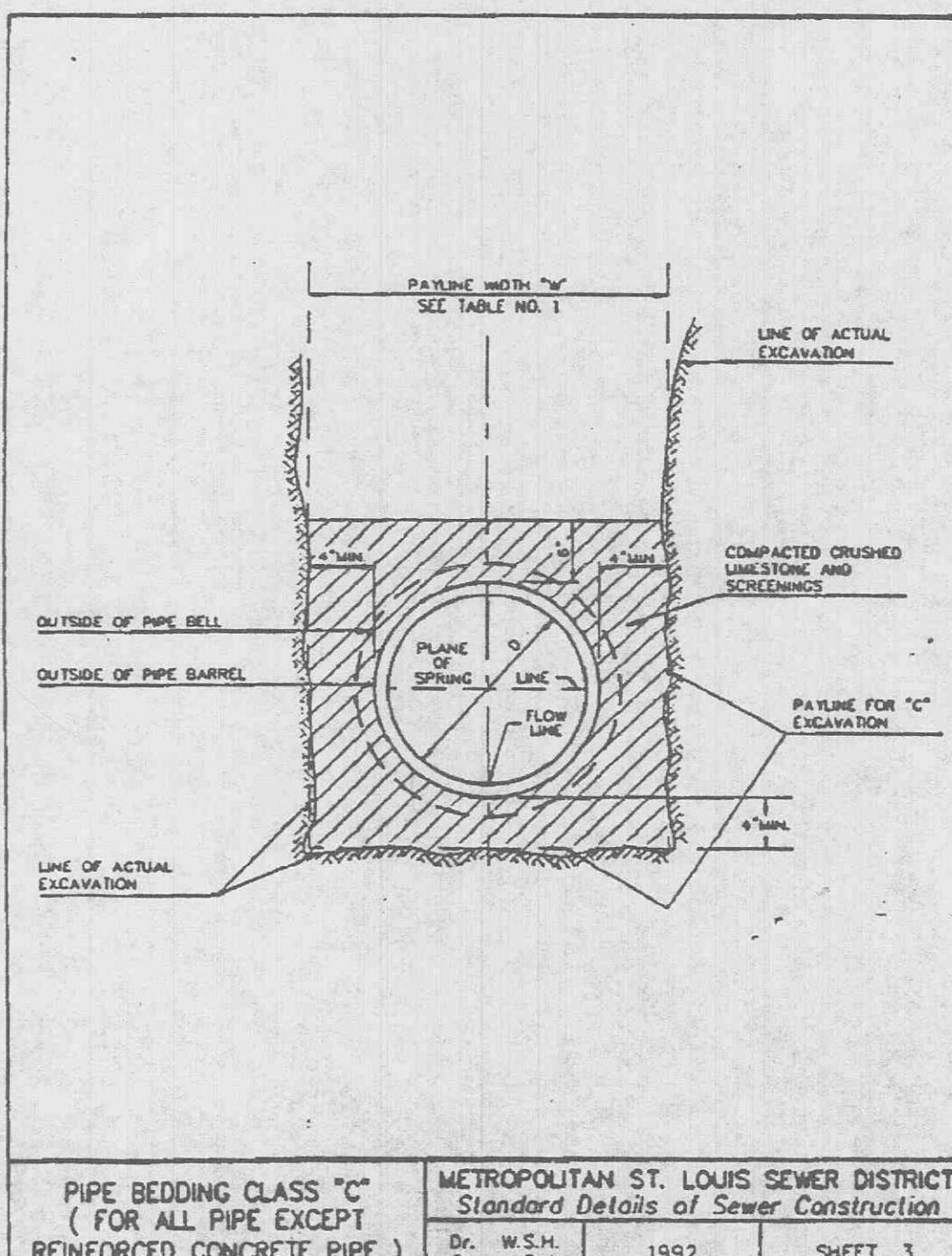
5-1

111
30

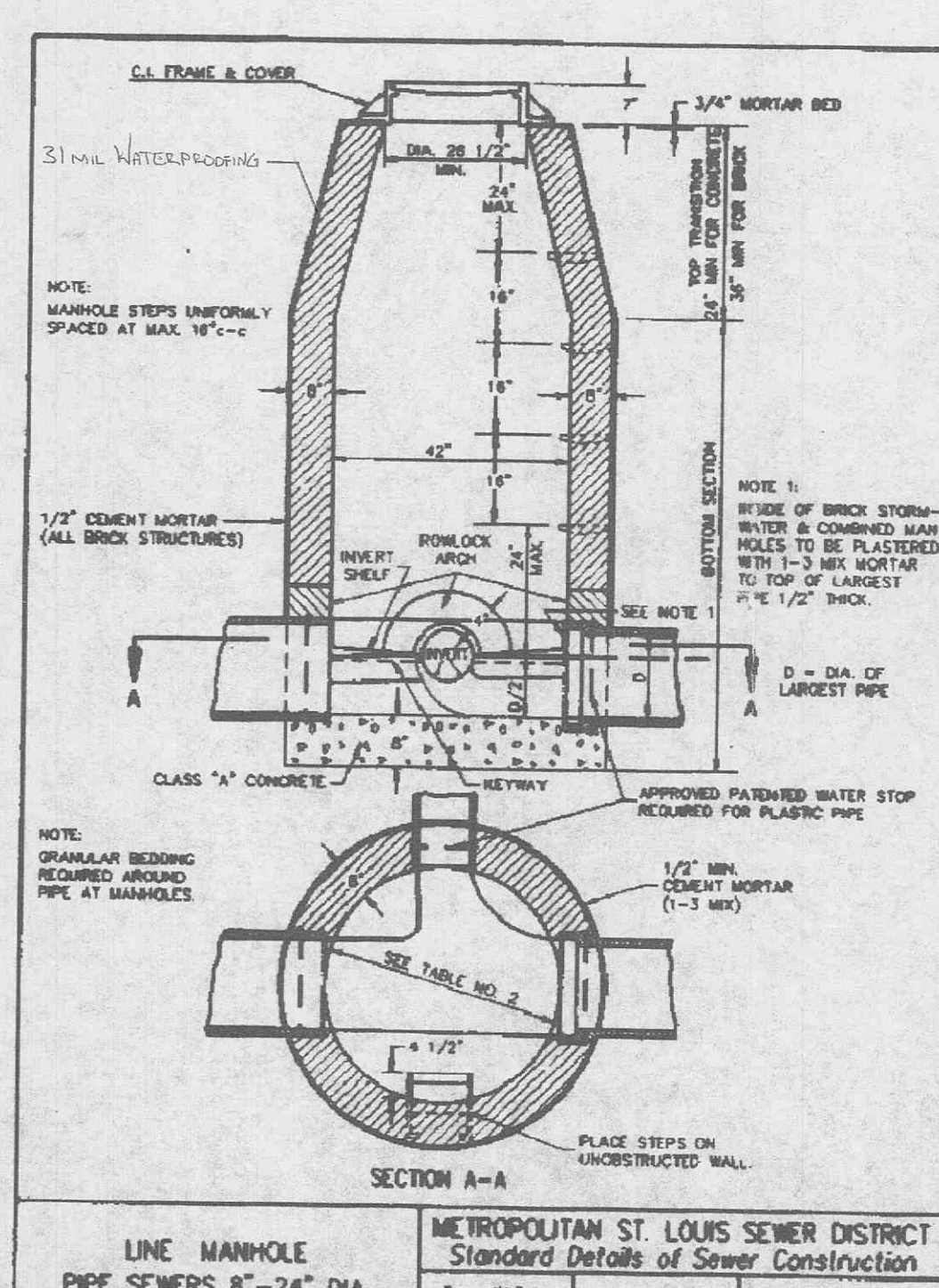
EXISTING ROADWAY 60'



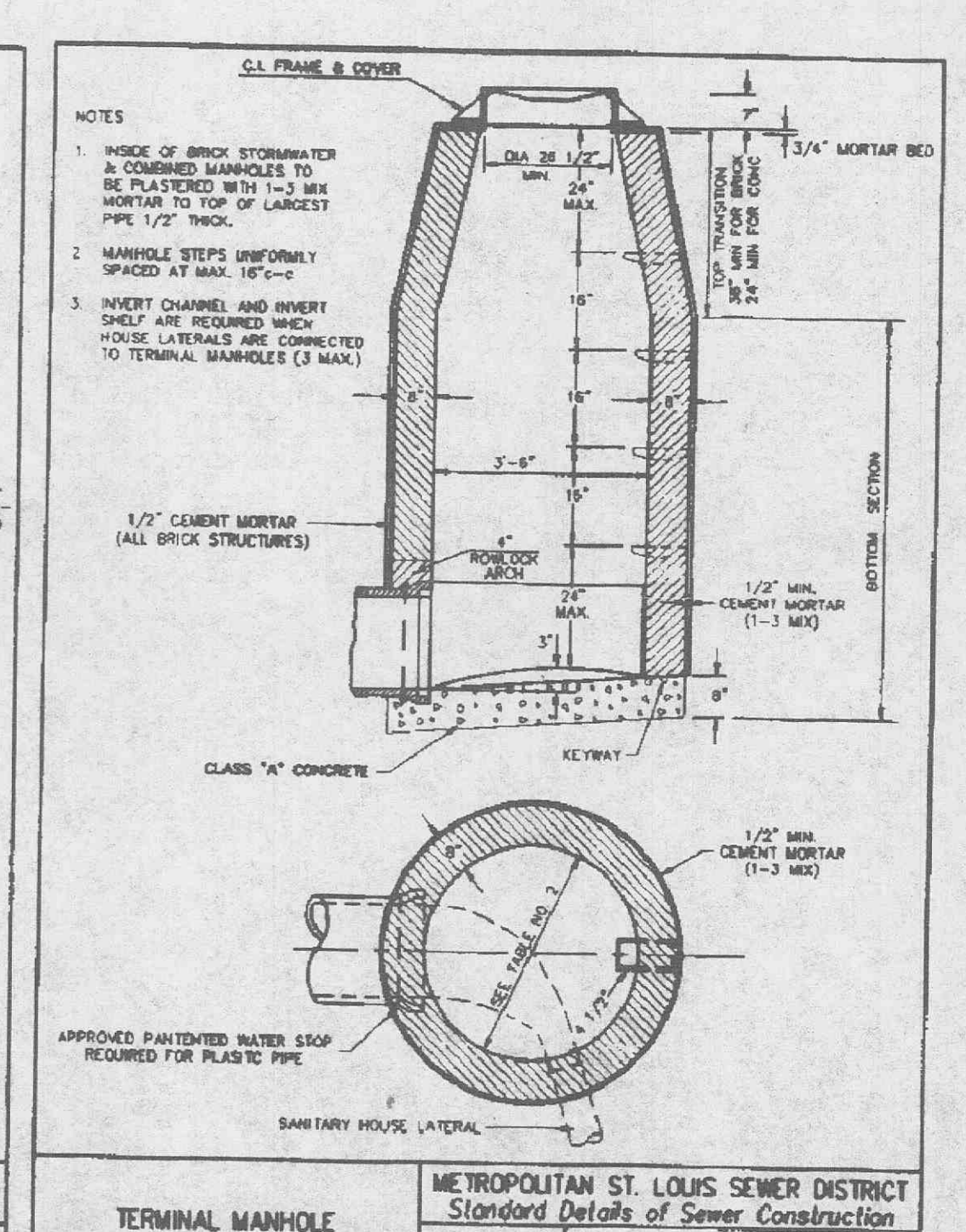
- NOTES:**
- 1) INSIDE DIAMETER OF CASING PIPE TO BE A MINIMUM OF 4" GREATER THAN COUPLING DIAMETER OF CARRIER PIPE.
 - 2) ENCASINGMENTS TO BE INSTALLED UNDER THE ROAD BY MEANS OF JACKING IT THROUGH, OR BY DRY-BORING A HOLE THAT WILL RECEIVE THE CASING WITH A SMOOTH FIT.
 - 3) THE OUTSIDE DIAMETER OF THE CASING SHALL NOT BE LESS THAN, NOR MORE THAN ONE INCH GREATER THAN THE BORED HOLE.
 - 4) THE ANNULAR SPACE BETWEEN THE CASING PIPE AND THE BORED HOLE SHALL BE FILLED WITH GROUT.



METROPOLITAN ST. LOUIS SEWER DISTRICT
Standard Details of Sewer Construction
Dr. W.S.H. Ch. J.C.K. 1992 SHEET 3



METROPOLITAN ST. LOUIS SEWER DISTRICT
Standard Details of Sewer Construction
Dr. W.S.H. Ch. J.C.K. 1992 SHEET 8



METROPOLITAN ST. LOUIS SEWER DISTRICT
Standard Details of Sewer Construction
Dr. W.S.H. Ch. J.C.K. 1992 SHEET 17

PREPARED FOR: **SANITARY SEWER EXTENSION FOR VILLAGES E & G**
T.R. HUGHES, INC.
239 FOX HILL ROAD
ST. CHARLES, MO 63301
(314) 940-9300

DISCLAIMER OF RESPONSIBILITY
I hereby certify that the documents included herein were prepared by me or under my direct supervision and I hereby disclaim any responsibility for all other drawings, specifications, estimates, reports or other documents or instruments resulting or intended to be used for any part of the structural or engineering project herein.

Copyright 1999
B&E Engineering Company, Inc.
All Rights Reserved.

REVISIONS

10-12-99	STORM OFFSET
1-11-00	MANHOLE REVISION

B&E
ENGINEERING
PLANNING
SURVEYING
1052 South Cloverleaf Drive
St. Peters, MO. 63378-6445
314-928-5552
FAX 928-1718

10-8-99
DATE
97-92031
PROJECT NUMBER
3 OF 3
SHEET OF
92031CON.DWG
FILE NAME
SCL CLH
DRAWN CHECKED