

NOTES:  
 A. SET 3/4" STANDARD INLET STONES IN 3/4" MORTAR BED AND DOWEL WITH 5/8" 1'-0" LONG PINS AND GROUT.  
 B. RAISE TO FINAL GRADE WITH COURSES OF BRICK & SET THE UNIT TO BASE WITH 3/4" MORTAR BED.  
 C. TO BE USED WITH POURED IN-PLACE CONCRETE BASE.  
 D. 4000 P.S.I. CONCRETE REQUIRED.

NOTES:  
 A. SET 2 STANDARD INLET STONES IN 3/4" MORTAR BED AND DOWEL WITH 5/8" 1'-0" LONG PINS AND GROUT.  
 B. SET THE UNIT TO BASE WITH 3/4" MORTAR BED.  
 C. THIS UNIT TO BE USED WITH A BRICK BASE HAVING 8" THICK WALLS AND WHO'S INSIDE DIMENSIONS CONFORM TO THE INSIDE DIMENSIONS OF THE UNIT AS INDICATED.  
 D. 4000 P.S.I. CONCRETE REQUIRED.

NOTE: INLETS ON THIS SHEET ARE TO BE USED IN LOCATIONS WHERE STANDARD OPEN THROAT INLETS CAN NOT BE USED, IN PAVED TRAFFIC WAY, AND IN LIMITED EASEMENTS.

NOTE: INLETS ON THIS SHEET ARE TO BE USED IN LOCATIONS WHERE STANDARD OPEN THROAT INLETS CAN NOT BE USED, IN PAVED TRAFFIC WAY, AND IN LIMITED EASEMENTS.

NOTE: INLETS ON THIS SHEET ARE TO BE USED IN LOCATIONS WHERE STANDARD OPEN THROAT INLETS CAN NOT BE USED, IN PAVED TRAFFIC WAY, AND IN LIMITED EASEMENTS.

NOTE: INLETS ON THIS SHEET ARE TO BE USED IN LOCATIONS WHERE STANDARD OPEN THROAT INLETS CAN NOT BE USED, IN PAVED TRAFFIC WAY, AND IN LIMITED EASEMENTS.

PRECAST CONCRETE UNIT FOR DOUBLE CURB INLET (WITH CONCRETE BASE)

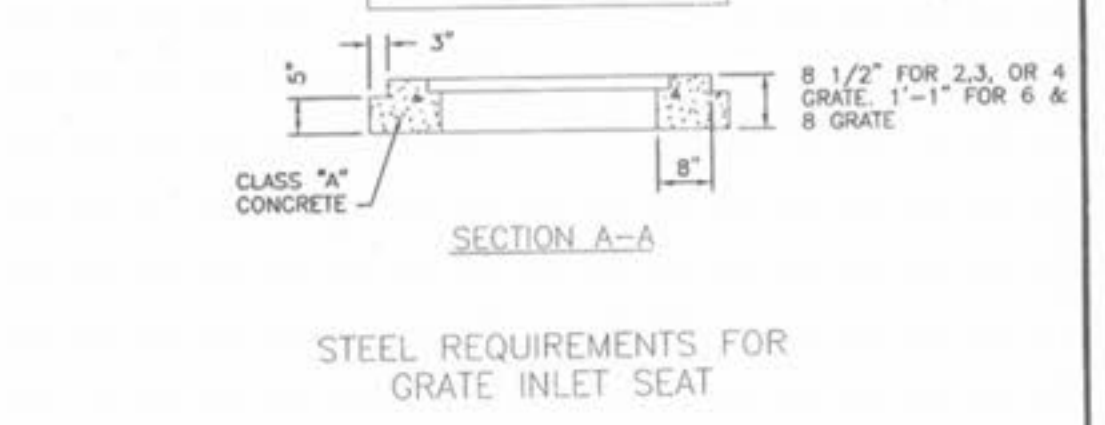
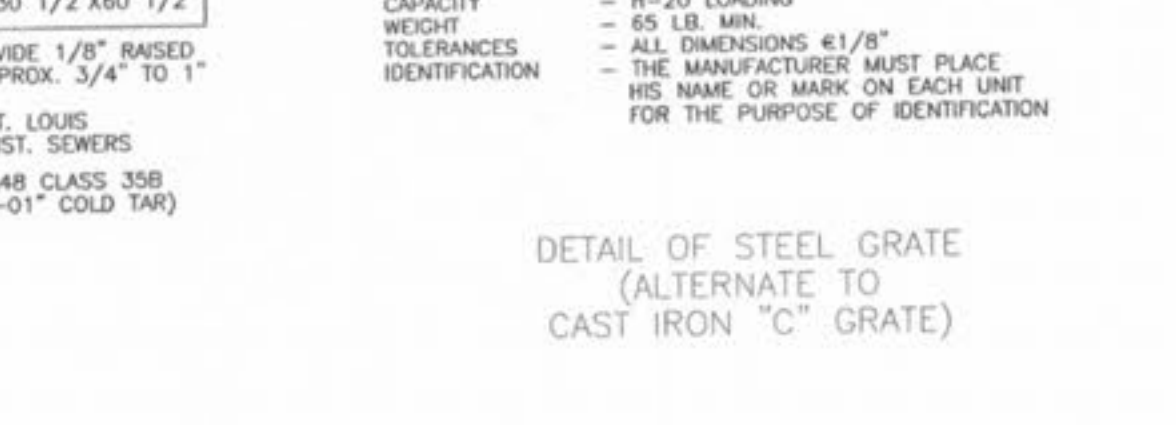
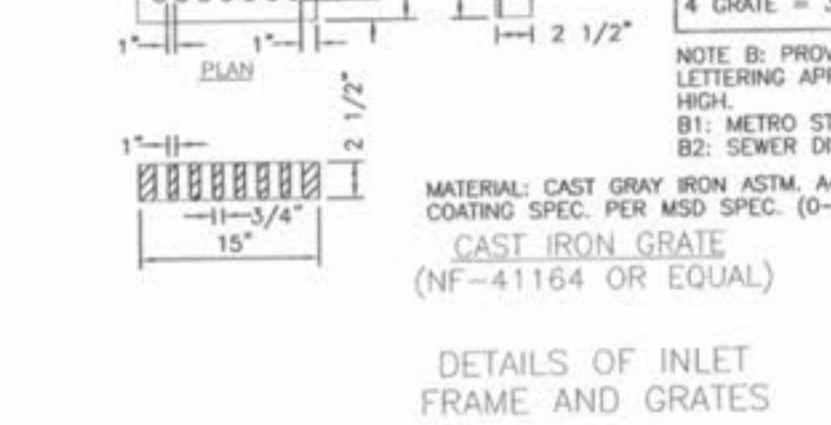
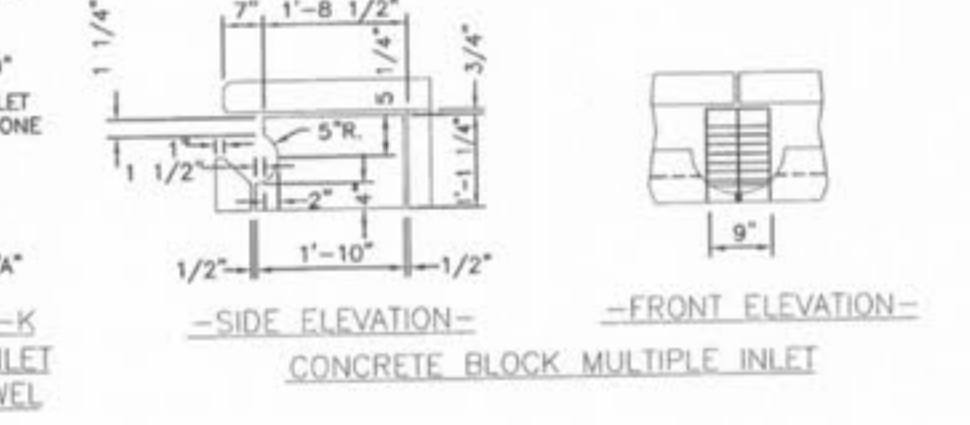
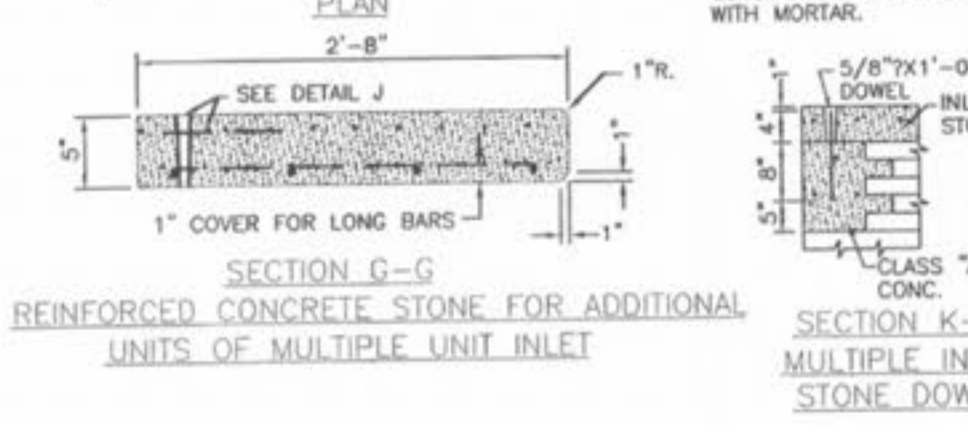
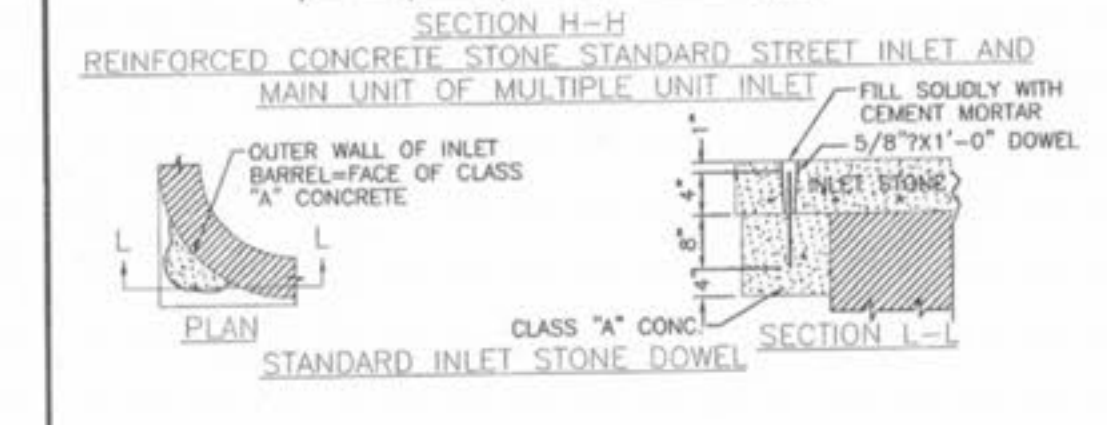
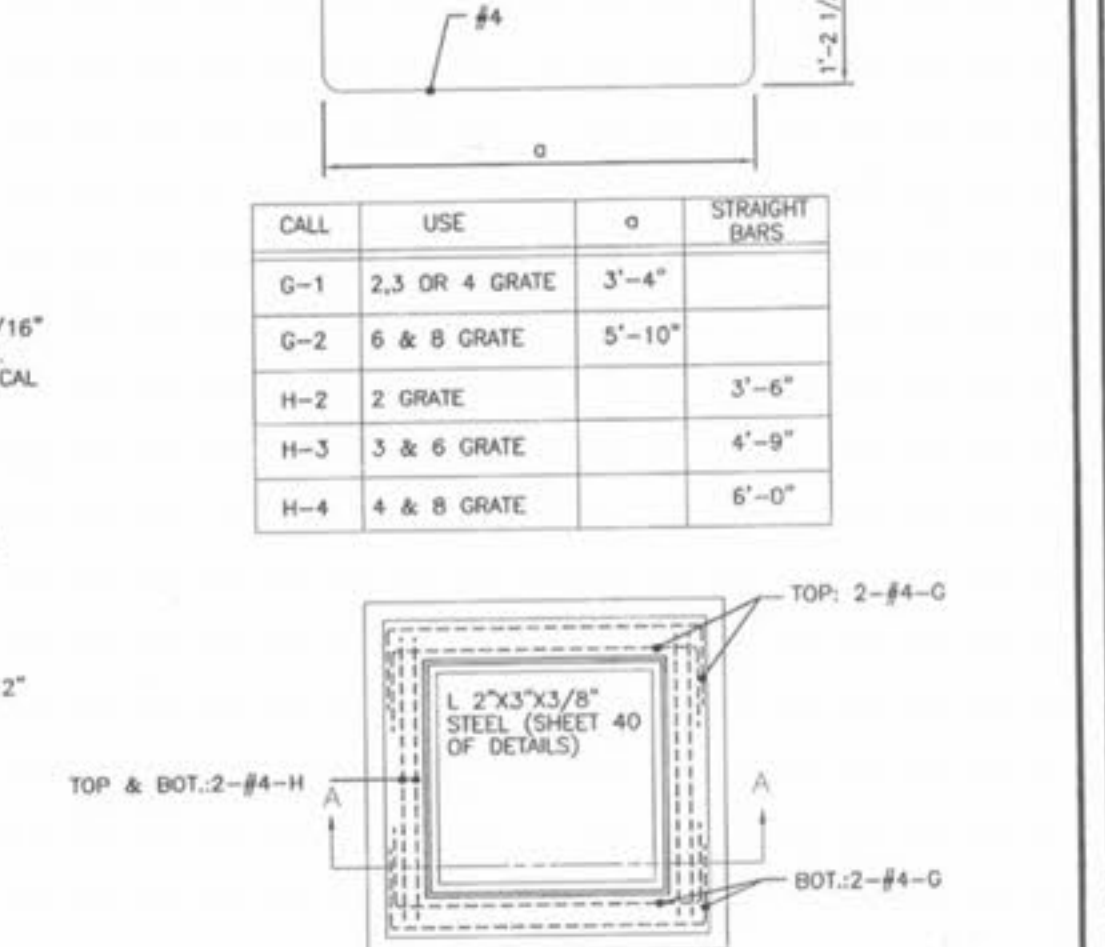
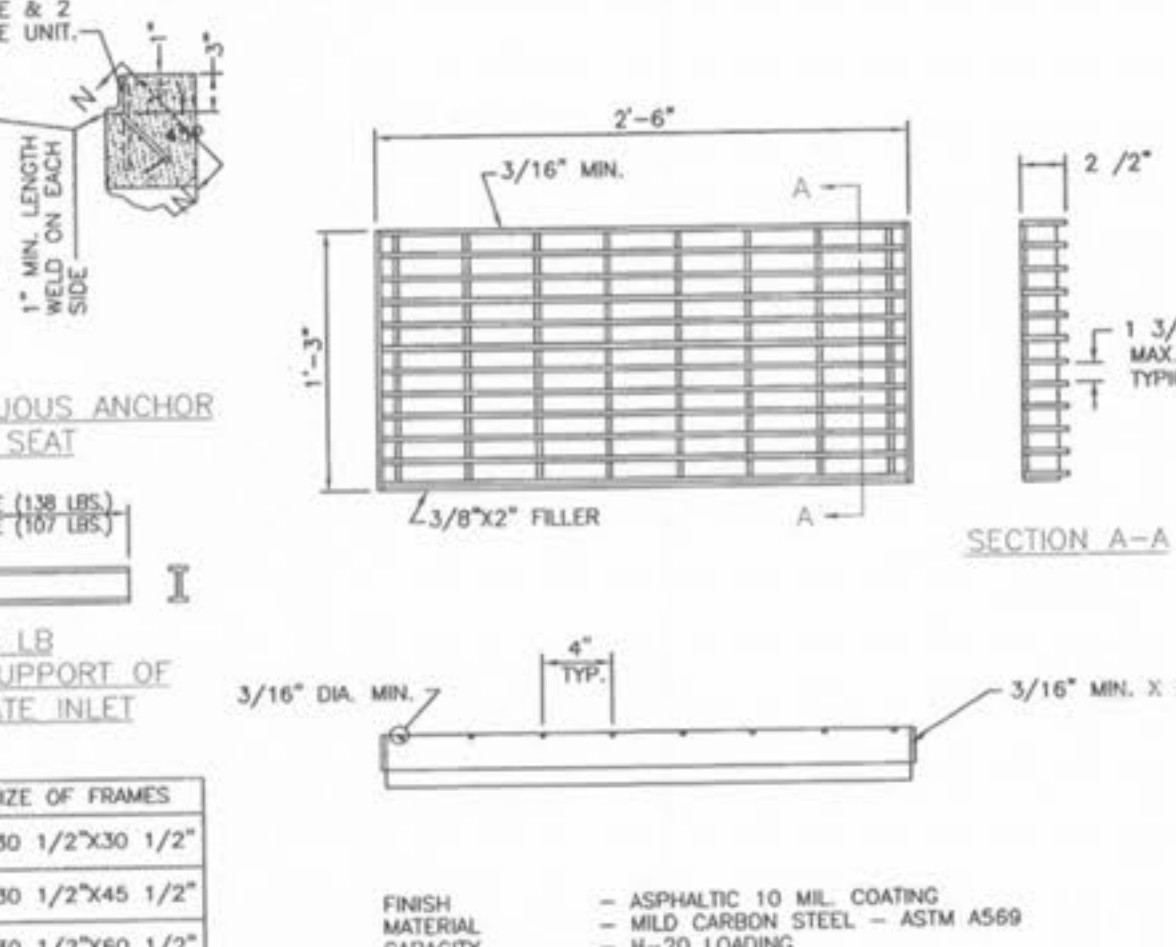
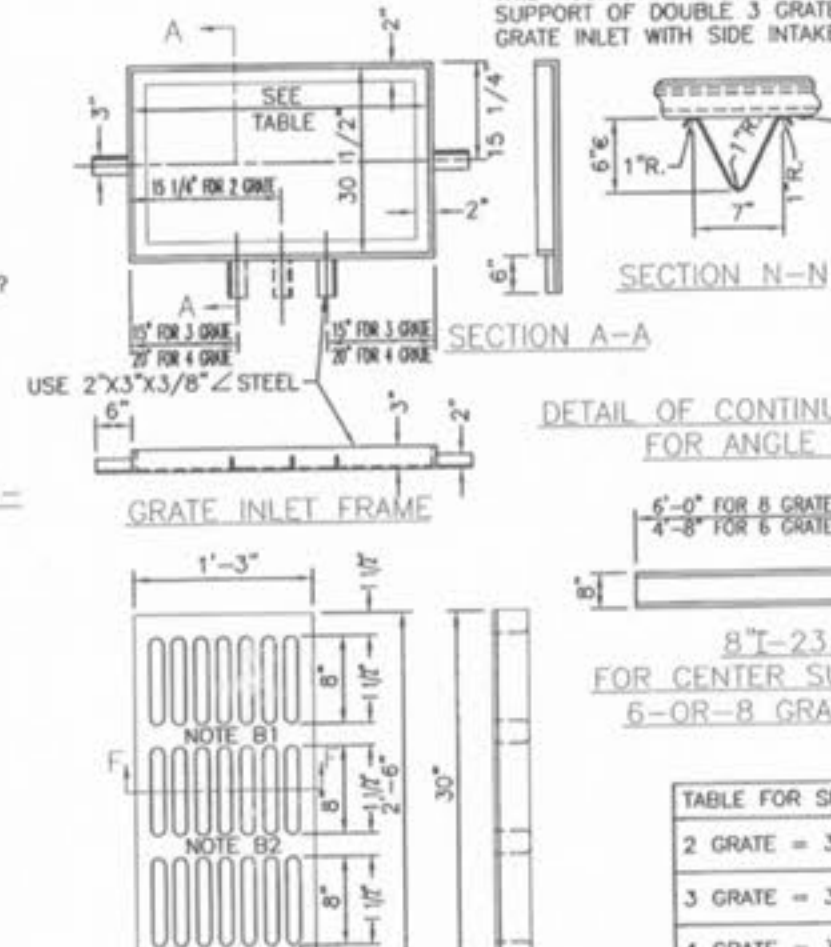
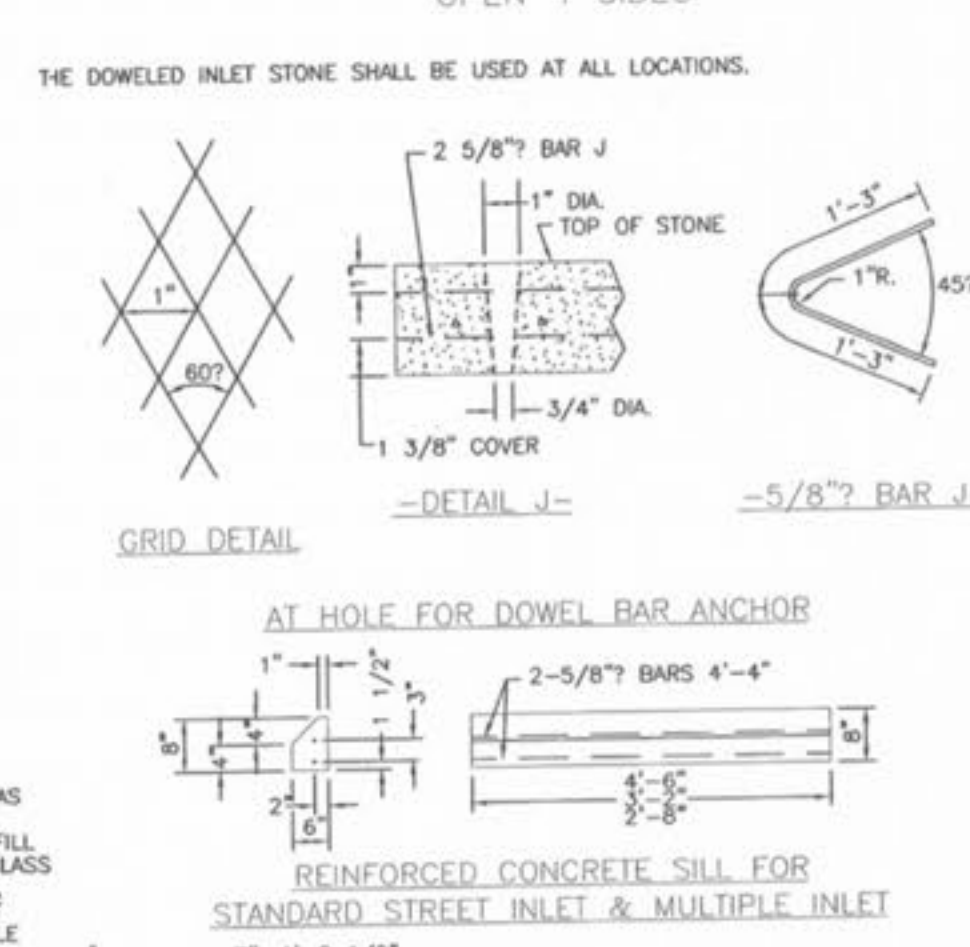
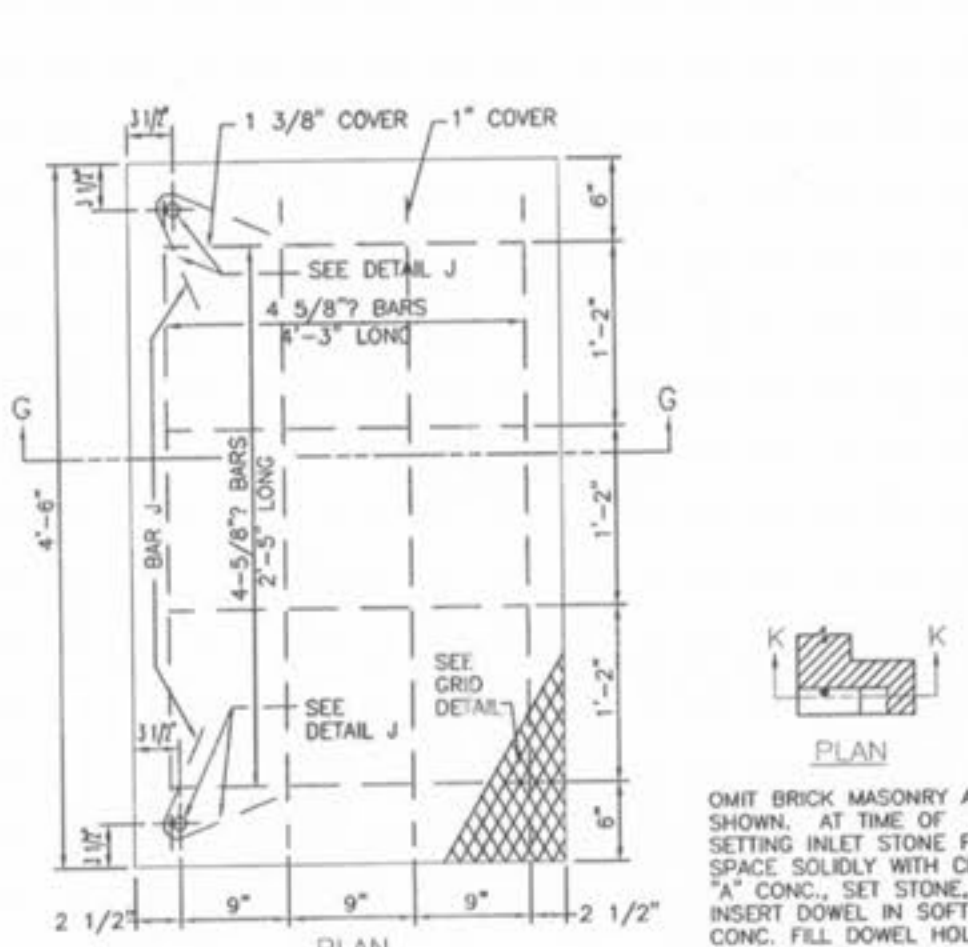
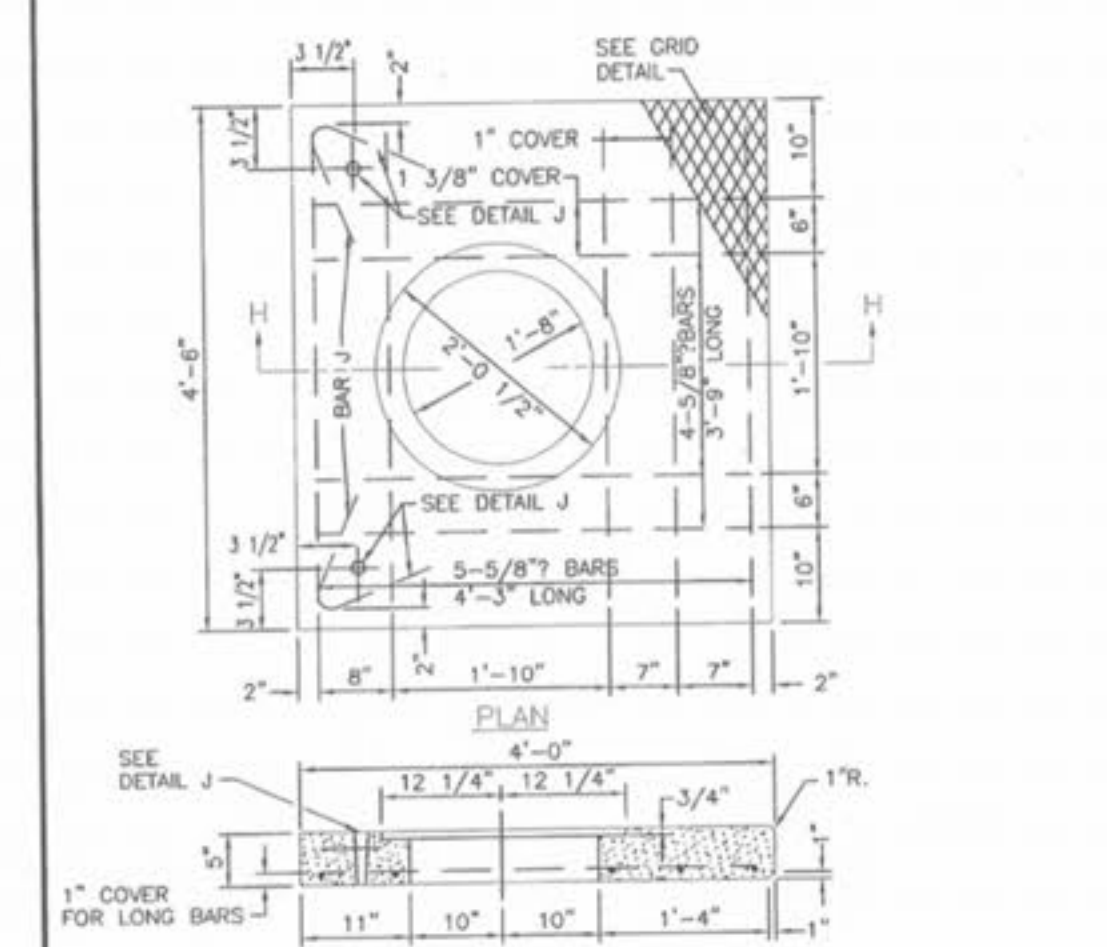
PRE-CAST CONCRETE UNIT FOR DOUBLE CURB INLET (WITH BRICK BASE)

DOUBLE AREA INLET OPEN 4 SIDES

2 GRATE INLET

2 GRATE INLET WITH SIDE INTAKE UNIT

6 & 8 GRATE INLET



STANDARD - INLET STONES, BLOCKS & DESIGN DETAILS

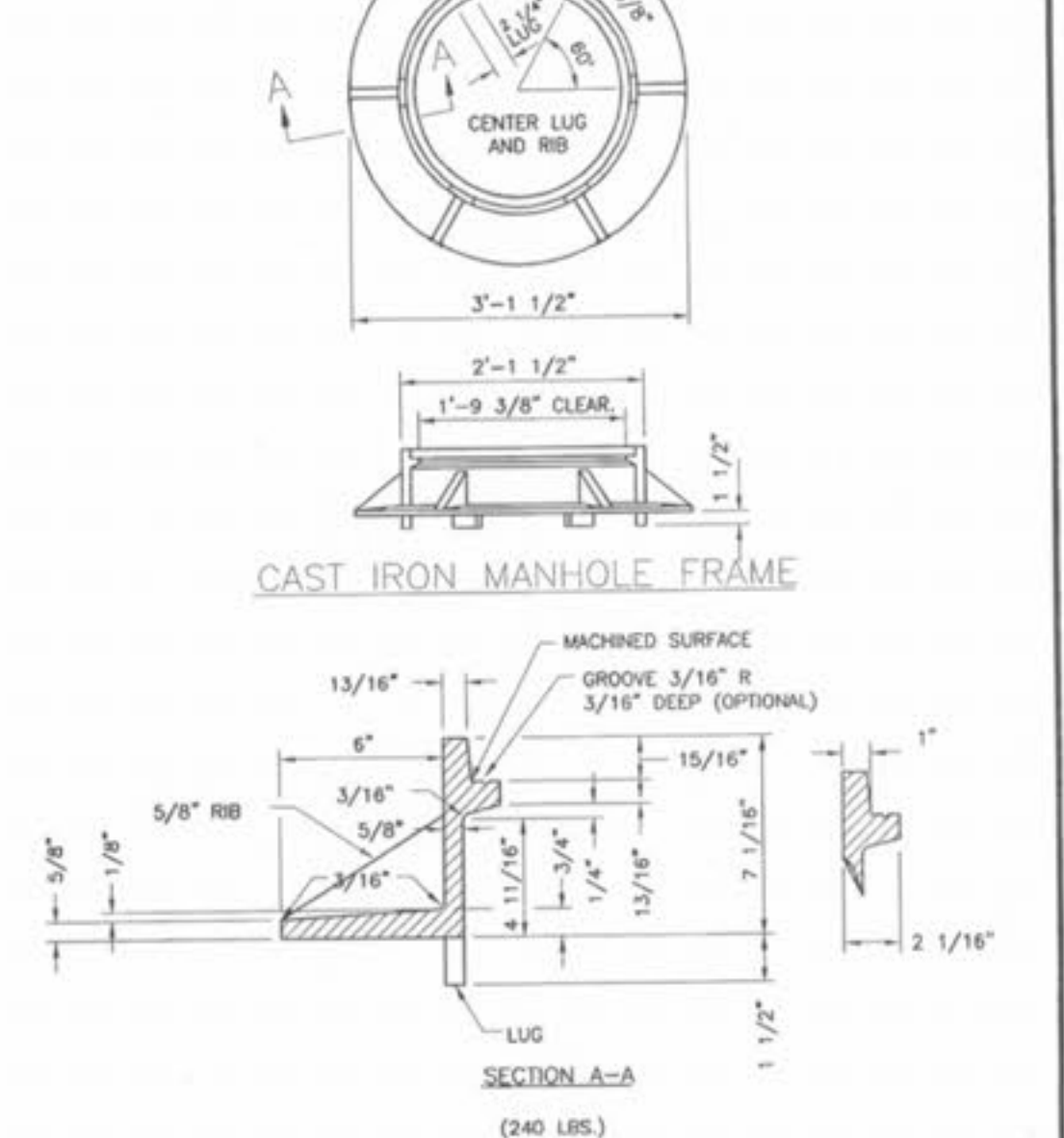
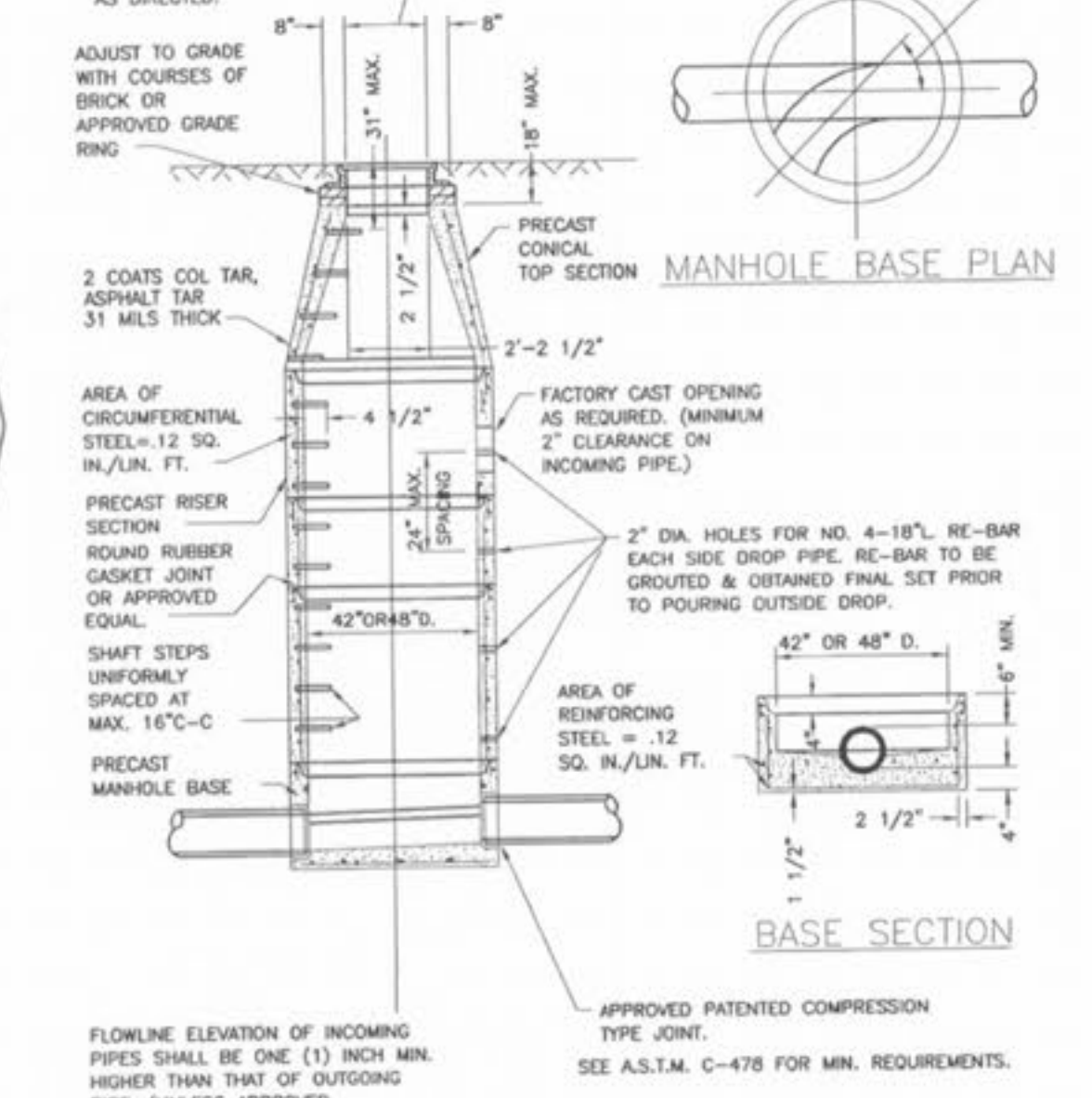
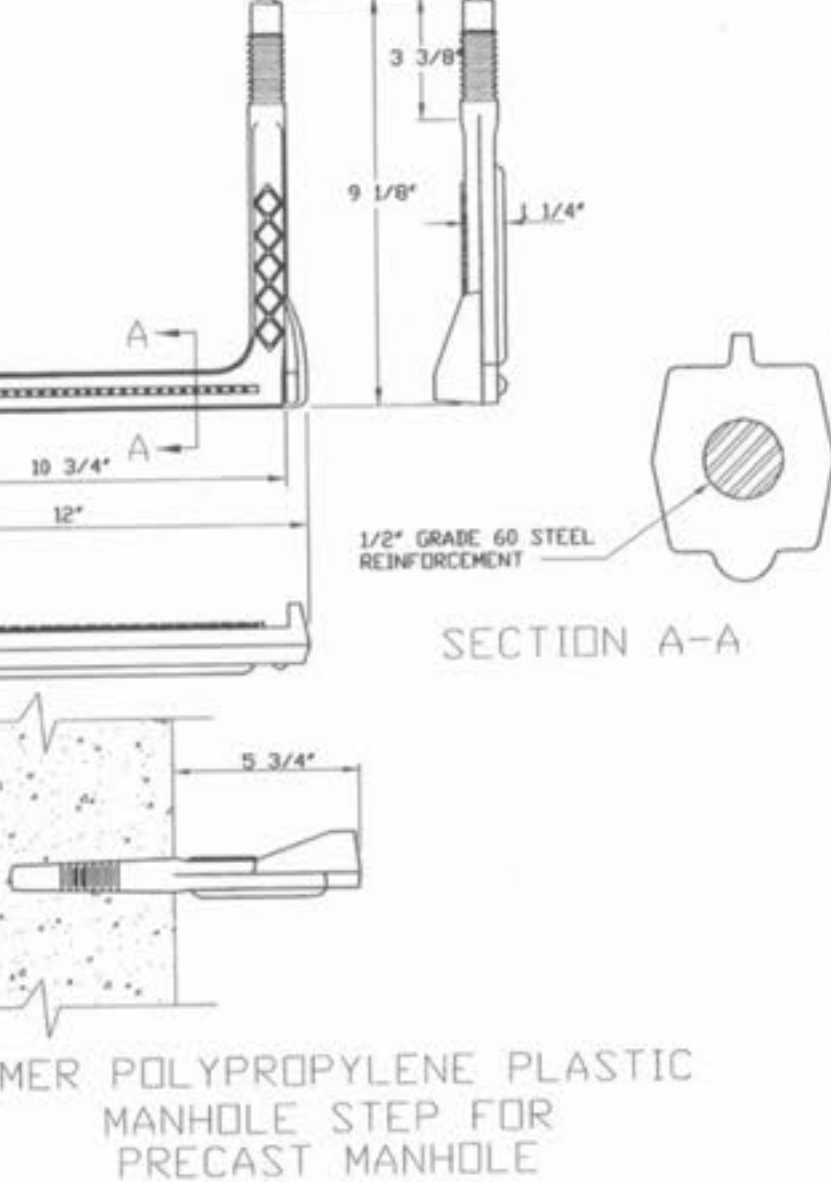
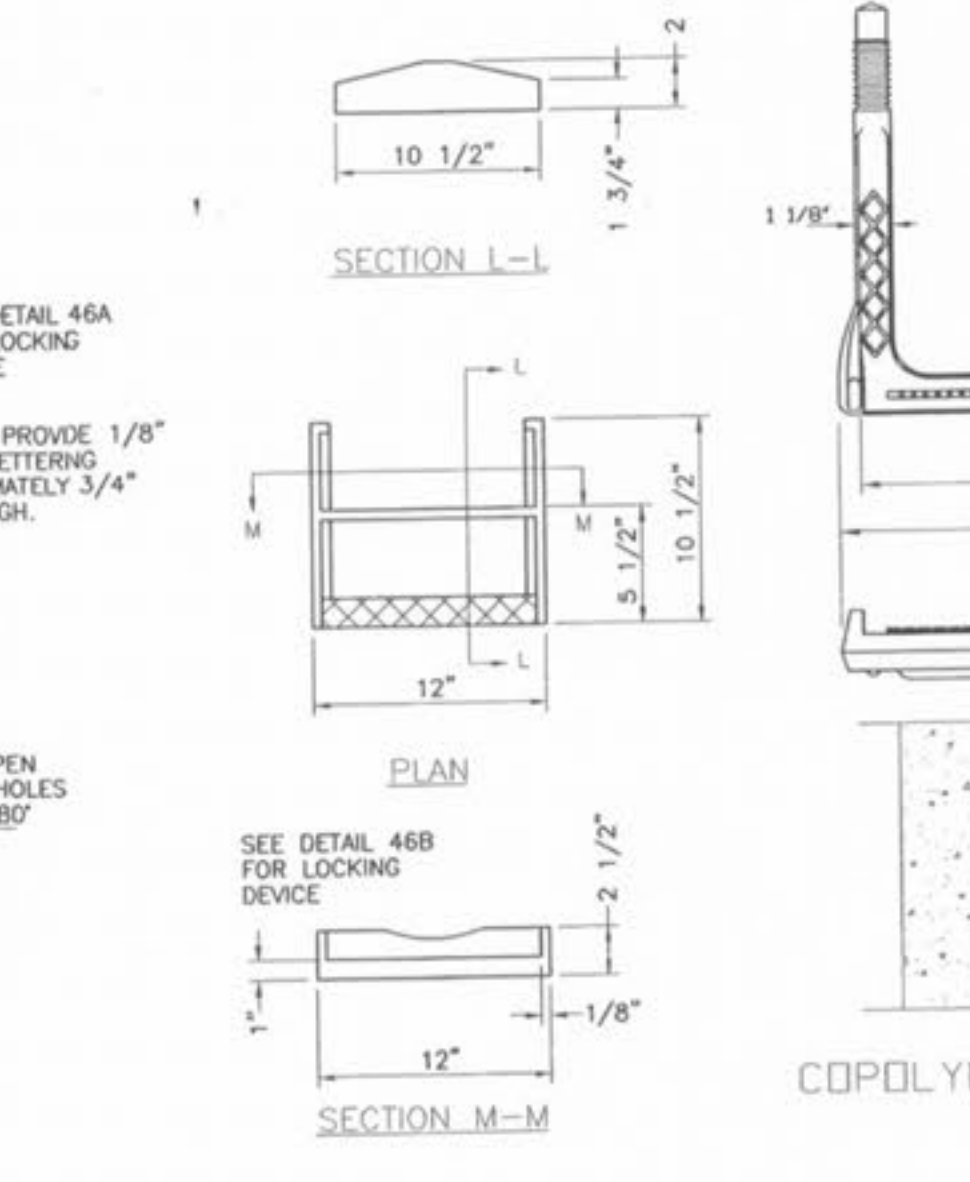
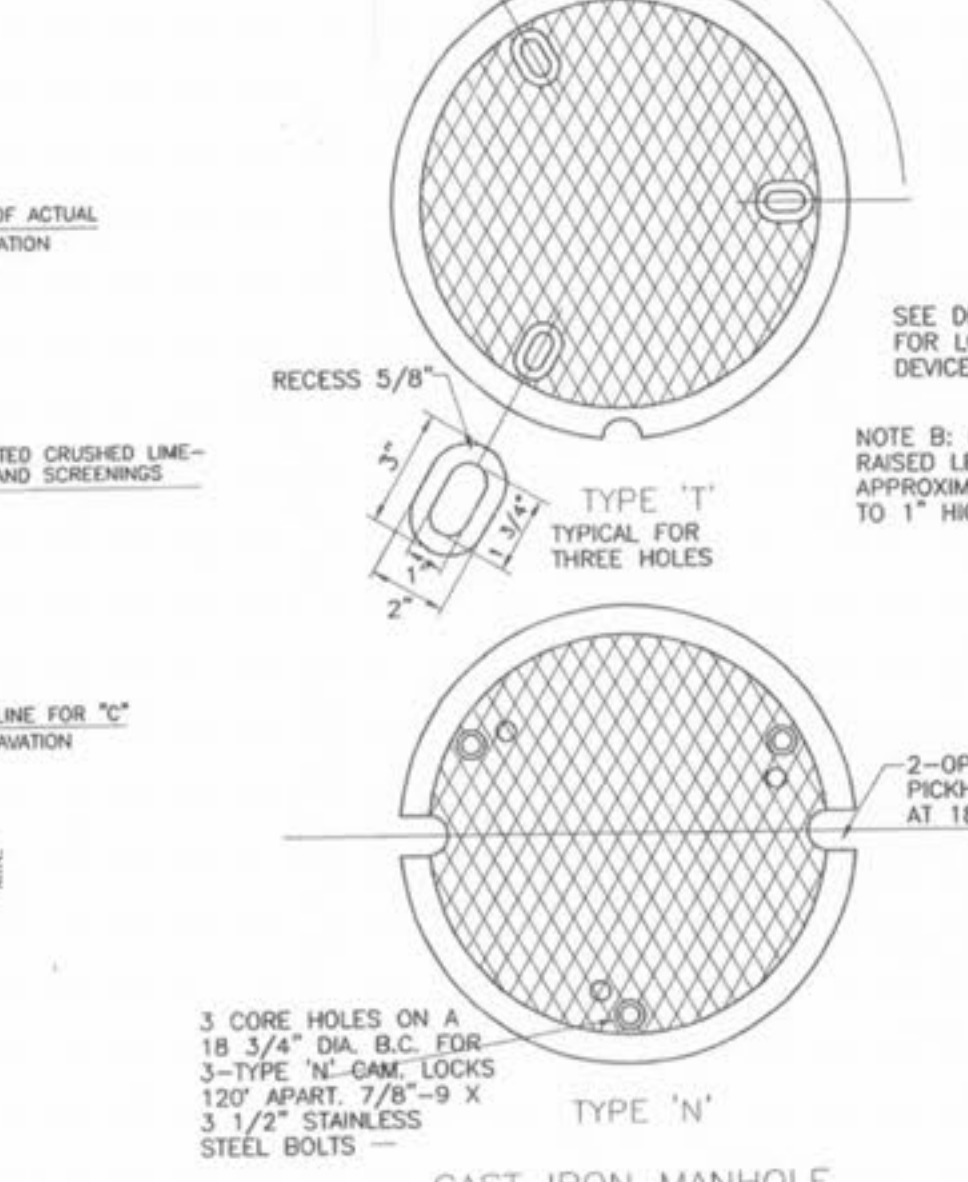
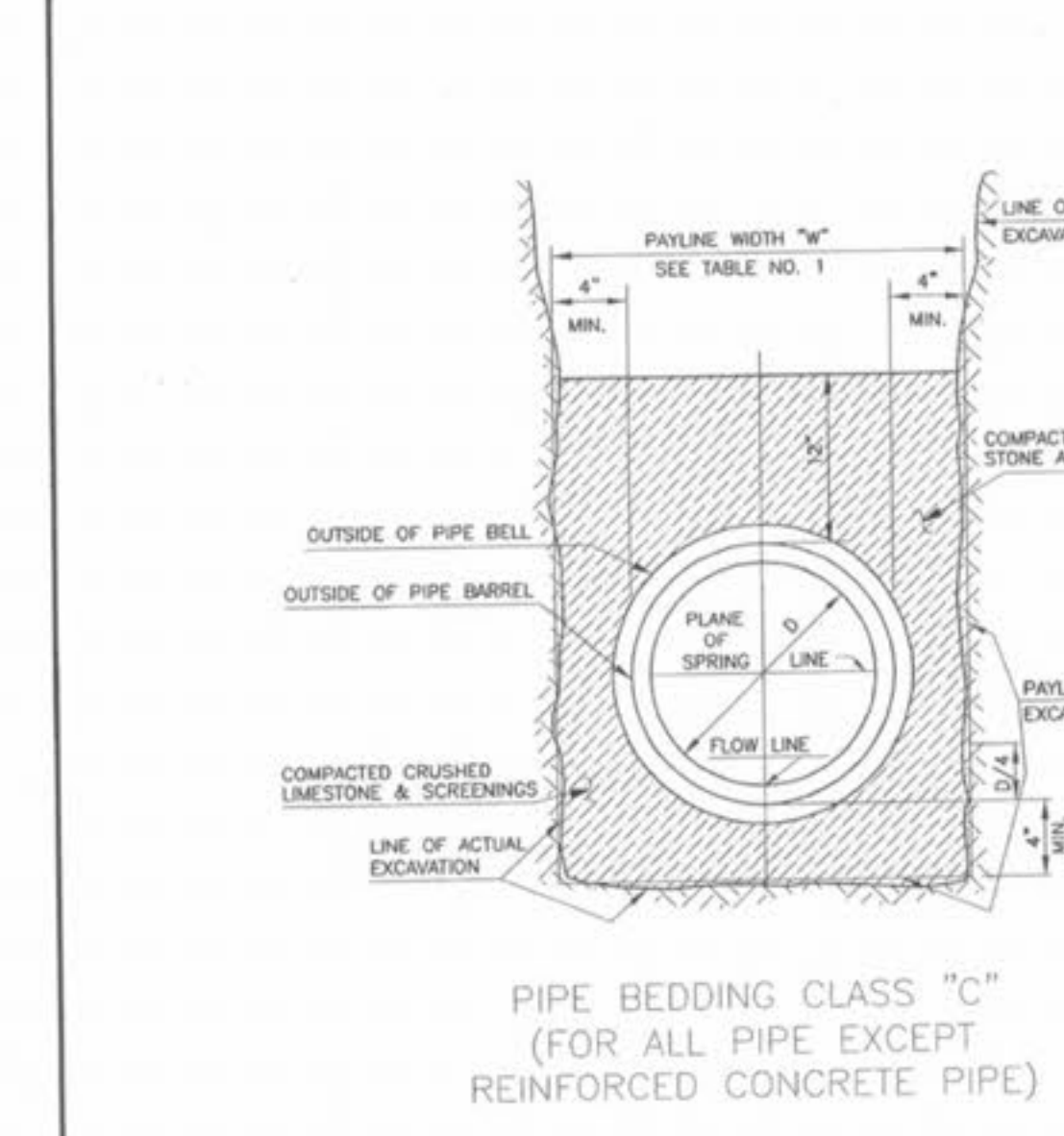
REINFORCED CONCRETE STONE FOR ADDITIONAL UNITS OF MULTIPLE UNIT INLET

GRID DETAIL

DETAIL OF CONTINUOUS ANCHOR FOR ANGLE SEAT

DETAIL OF STEEL GRATE (ALTERNATE TO CAST IRON 'C' GRATE)

STEEL REQUIREMENTS FOR GRATE INLET SEAT



PIPE BEDDING CLASS "C" (FOR ALL PIPE EXCEPT REINFORCED CONCRETE PIPE)

CAST IRON MANHOLE COVERS (LOCK TYPE)

CAST IRON MANHOLE STEPS

COPOLYMER POLYPROPYLENE PLASTIC MANHOLE STEP FOR PRECAST MANHOLE

PRE-CAST CONCRETE MANHOLE FOR SEWERS 8" THROUGH 12"

CAST IRON MANHOLE FRAME

**PICKETT RAY & SILVER**  
 CIVIL ENGINEERS  
 PLANNERS  
 LAND SURVEYORS  
 333 Mid Rivers Mall Drive  
 St. Peters, MO 63376  
 Phone (636) 397-1211  
 Fax (636) 397-1104

**CROSSINGS INDUSTRIAL PHASE 2**  
 CONSTRUCTION DETAILS  
 Prepared For:  
**SUMMIT POINTE L.C.**  
 239 FOX HILL ROAD  
 ST. CHARLES, MO 63301  
 (636) 940-9500

REVISIONS	DATE	PER CITY COMMENTS
NO. 1	09/23/03	

**ENGINEERS AUTHENTICATION**  
 The responsibility for professional engineering liability on this project is hereby limited to the set of plans authenticated by the seal, signature, and date hereunder attached. Responsibility is disclaimed for all other engineering plans involved in this project and specifically excludes revisions after this date unless reauthenticated.

**PICKETT, RAY & SILVER, INC.**  
 HAROLD J. BARTON  
 LICENSE NUMBER  
 E-17751

DRAWN	E.J.S.	DATE	03/20/03
CHECKED	D.W.D.	DATE	03/20/03
PROJECT	# 01212.SUPO.01R		
TASK	# 2 FIELD 826		
BOOK			

CROSSINGS INDUSTRIAL PHASE 2  
 CONSTRUCTION DETAILS  
 SHEET **6** OF **9**  
 © Copyright 2003 by Pickett, Ray & Silver Inc.