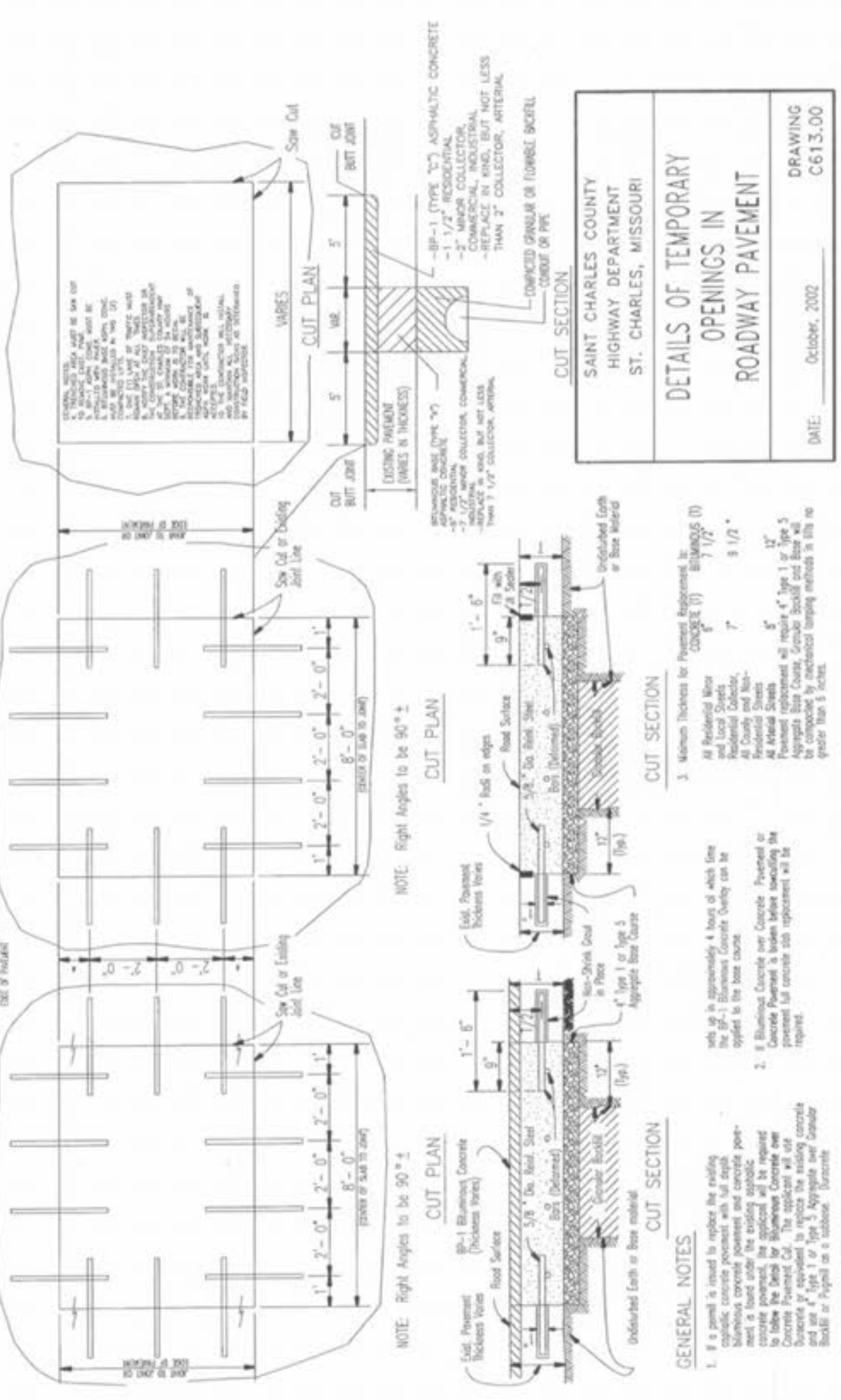
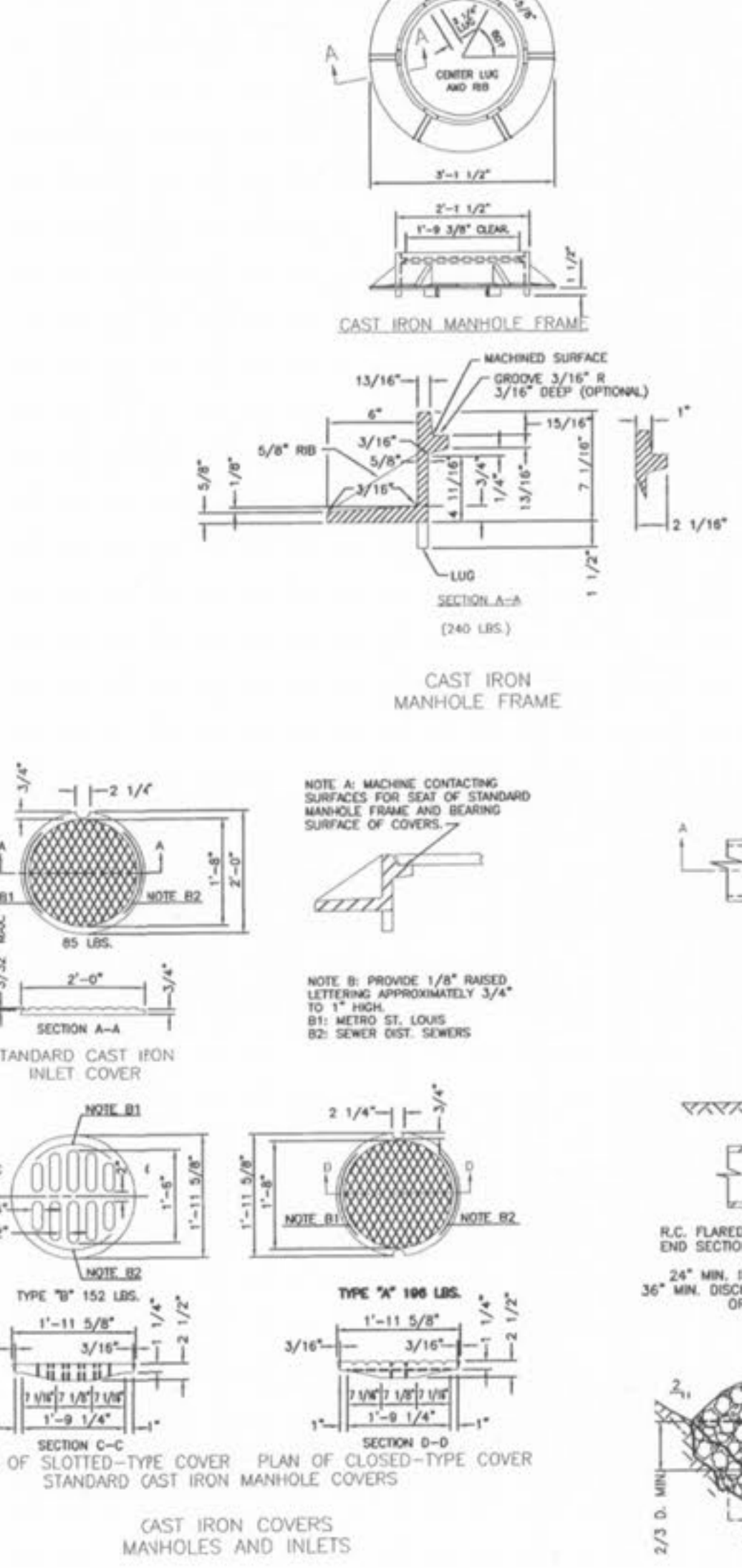


BITUMINOUS CONCRETE OVER CONCRETE PAVEMENT CUT
 CONCRETE PAVEMENT CUT
 BITUMINOUS CONCRETE PAVEMENT CUT



GENERAL NOTES:

- If a joint is used to replace the existing bituminous concrete pavement, the joint shall be constructed in accordance with the requirements of the Missouri Department of Transportation Manual of Practice, Section 100.01, and shall be approved by the Missouri Department of Transportation.
- Bituminous concrete shall be placed and finished in accordance with the requirements of the Missouri Department of Transportation Manual of Practice, Section 100.01, and shall be approved by the Missouri Department of Transportation.
- When the existing pavement is in good condition, the existing pavement shall be left in place and the new pavement shall be placed on top of the existing pavement.
- When the existing pavement is in poor condition, the existing pavement shall be removed and the new pavement shall be placed on a new subgrade.



GENERAL NOTES:

- Machine contacting surfaces for seat of standard manhole frame and bearing surface of covers.
- Provide 1/8" raised lettering approximately 3/4" to 1" high.
- SEWER CAST COVERS.

NOTE: WOVEN GEOTEXTILE FABRIC REQUIRED UNDER ROCK BLANKET.

SAINT CHARLES COUNTY
 HIGHWAY DEPARTMENT
 ST. CHARLES, MISSOURI

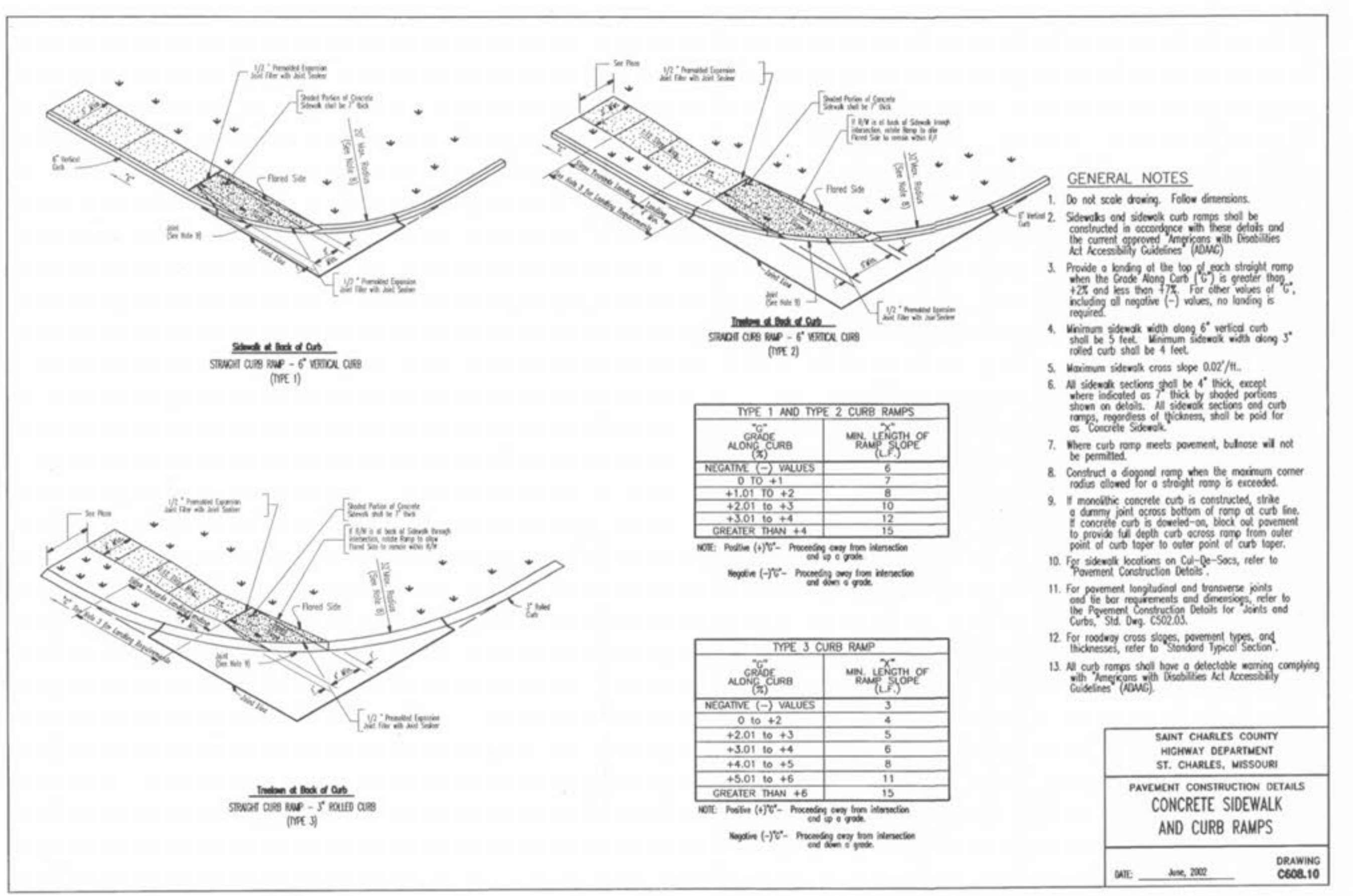
DETAILS OF TEMPORARY OPENINGS IN ROADWAY PAVEMENT

DATE: October, 2002
 DRAWING: C613.00

SAINT CHARLES COUNTY
 HIGHWAY DEPARTMENT
 ST. CHARLES, MISSOURI

**PAVEMENT CONSTRUCTION DETAILS
 CONCRETE SIDEWALK
 AND CURB RAMPS**

DATE: June, 2002
 DRAWING: C608.10



TYPE 1 AND TYPE 2 CURB RAMPS

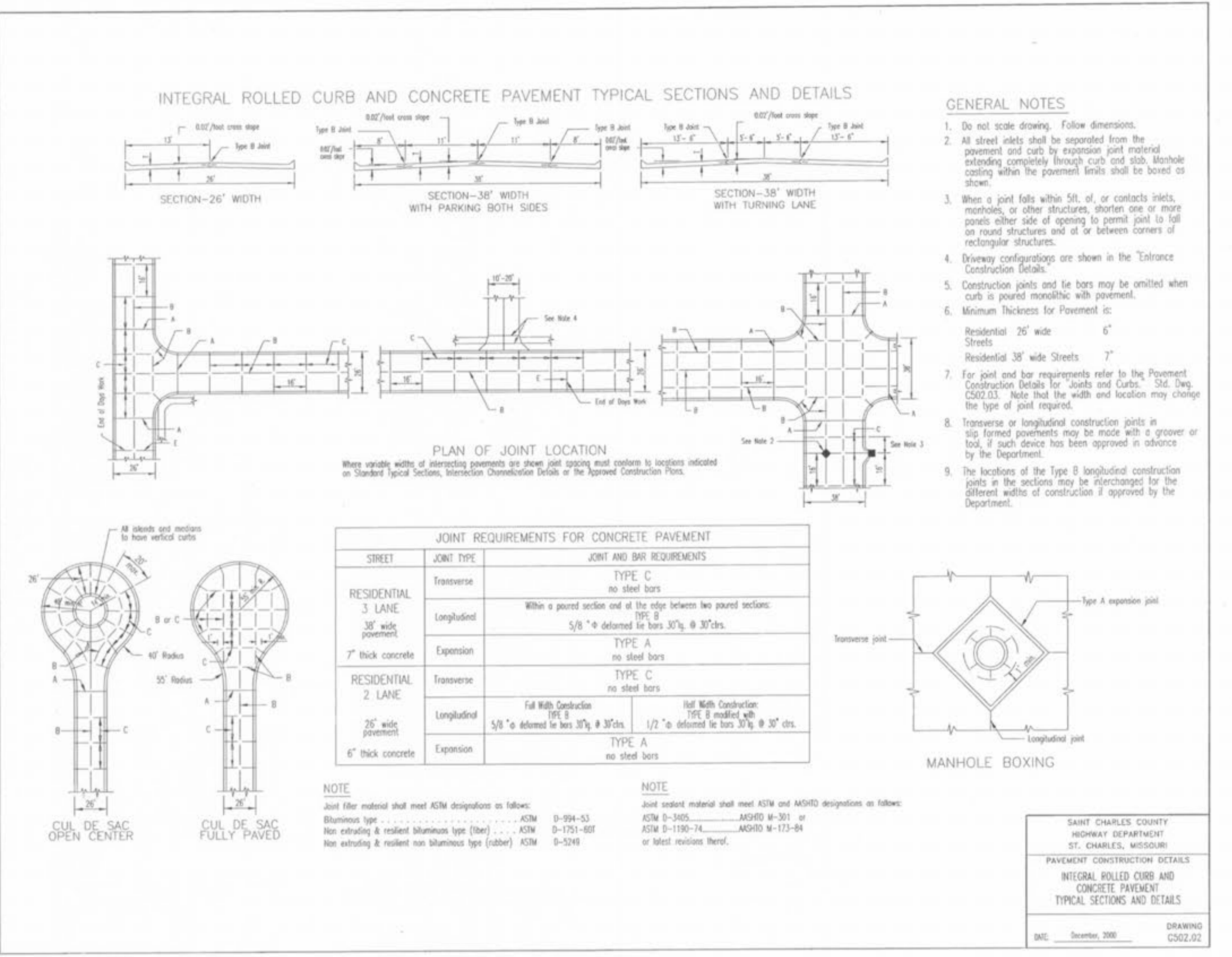
GRADE ALONG CURB (ft)	MIN. LENGTH OF RAMP SLOPE (ft)
NEGATIVE (-) VALUES	6
0 TO +1	7
+1.01 TO +2	8
+2.01 TO +3	10
+3.01 TO +4	12
GREATER THAN +4	15

TYPE 3 CURB RAMP

GRADE ALONG CURB (ft)	MIN. LENGTH OF RAMP SLOPE (ft)
NEGATIVE (-) VALUES	3
0 TO +2	4
+2.01 TO +3	5
+3.01 TO +4	6
+4.01 TO +5	8
+5.01 TO +6	11
GREATER THAN +6	15

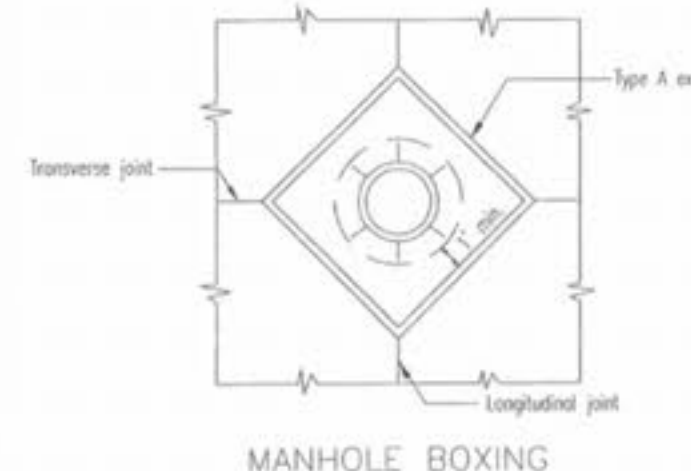
GENERAL NOTES:

- Do not scale drawing. Follow dimensions.
- Sidewalk and sidewalk curb ramps shall be constructed in accordance with these details and the current approved Americans with Disabilities Act Accessibility Guidelines (ADAAG).
- Provide a landing at the top of each straight ramp when the Grade Along Curb (GAC) is greater than +2.0 and less than +2.5. For other values of GAC, including all negative (-) values, no landing is required.
- Minimum sidewalk width along 6" vertical curb shall be 5 feet. Minimum sidewalk width along 4" rolled curb shall be 4 feet.
- Maximum sidewalk cross slope 0.02/ft.
- All sidewalk sections shall be 4" thick, except where indicated as 7" thick by shaded portions shown on details. All sidewalk sections and curb ramps, regardless of thickness, shall be paid for as Concrete Sidewalk.
- Where curb ramp meets pavement, balance will not be permitted.
- Construct a diagonal ramp when the maximum corner radius allowed for a straight ramp is exceeded.
- If monolithic concrete curb is constructed, strike a dummy joint across bottom of ramp at curb line. If concrete curb is dowelled, block out pavement to provide full depth curb across ramp from outer point of curb taper to outer point of curb taper.
- For sidewalk locations on Curb-In-Side, refer to Pavement Construction Details.
- For pavement longitudinal and transverse joints and tie bar requirements and dimensions, refer to the Pavement Construction Details for Joints and Curbs, Std. Det. CS02.03.
- For roadway cross slopes, pavement types, and thicknesses, refer to Standard Typical Section.
- All curb ramps shall have a detectable warning complying with Americans with Disabilities Act Accessibility Guidelines (ADAAG).



JOINT REQUIREMENTS FOR CONCRETE PAVEMENT

STREET	JOINT TYPE	JOINT AND BAR REQUIREMENTS
RESIDENTIAL 3 LANE 36' wide pavement	Transverse	TYPE C no steel bars
	Longitudinal	Within a paired section and at the edge between two paired sections: TYPE A 5/8" deformed tie bars 30'lg, @ 30'chs.
RESIDENTIAL 2 LANE 26' wide pavement	Transverse	TYPE C no steel bars
	Longitudinal	Full Width Construction: TYPE B 5/8" deformed tie bars 30'lg, @ 30'chs. Half Width Construction: TYPE B modified with 1/2" deformed tie bars 30'lg, @ 30'chs.
RESIDENTIAL 2 LANE 26' wide pavement	Transverse	TYPE A no steel bars
	Expansion	TYPE A no steel bars

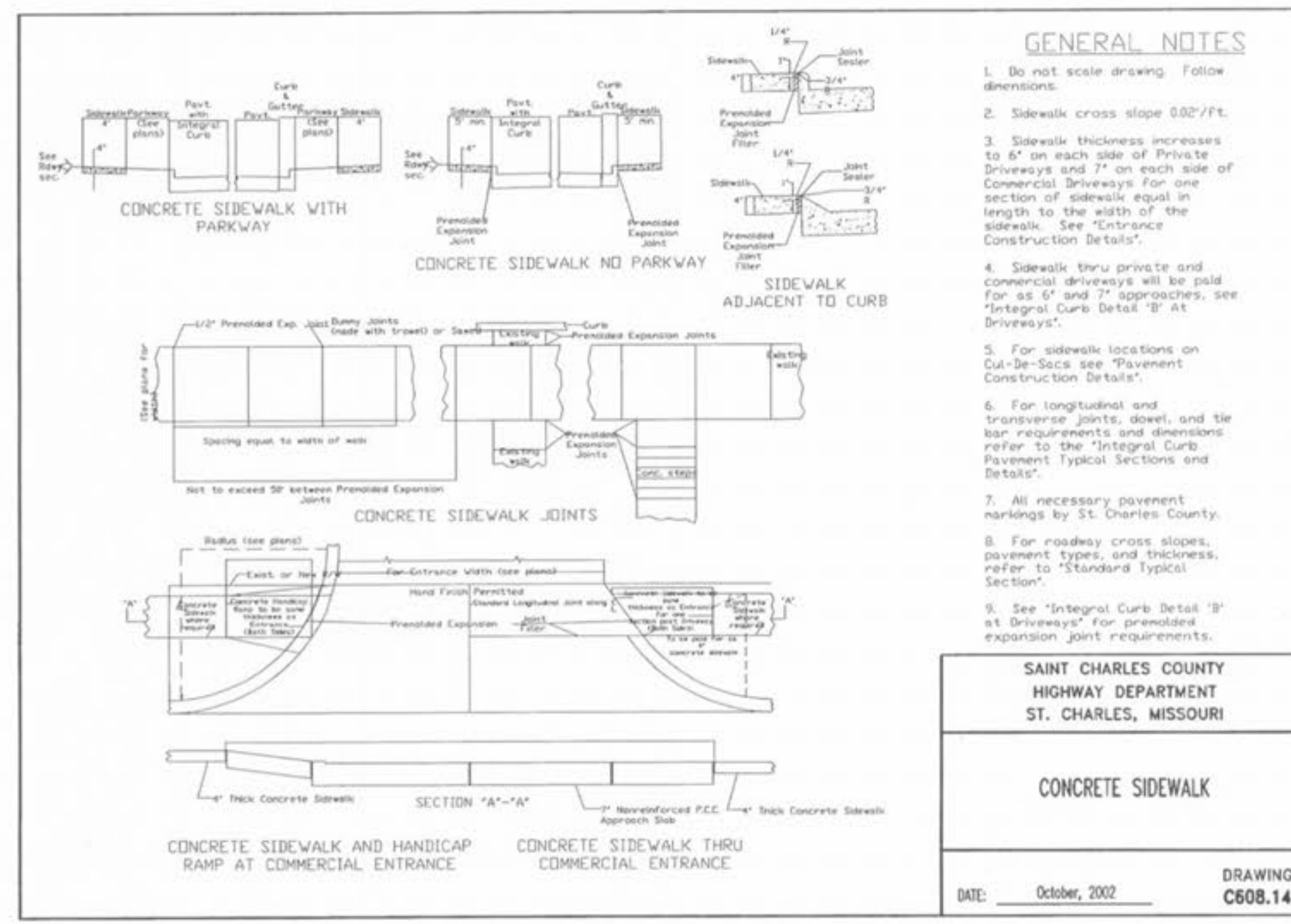


GENERAL NOTES:

- Do not scale drawing. Follow dimensions.
- All street alleys shall be separated from the pavement and curb by expansion joint material extending completely through curb and slab. Manhole casing within the pavement limits shall be boxed as shown.
- When a joint falls within 5ft. of, or contacts inlets, manholes, or other structures, shorten one or more panels either side of opening to permit joint to fall on road structures and at or between corners of rectangular structures.
- Driveway configurations are shown in the 'Entrance Construction Details'.
- Construction joints and tie bars may be omitted when curb is poured monolithic with pavement.
- Minimum Thickness for Pavement: Residential 26' wide Streets 6" Residential 36' wide Streets 7"
- For joint and bar requirements refer to the Pavement Construction Details for Joints and Curbs, Std. Det. CS02.03. Note that the width and location may change the type of joint required.
- Transverse or longitudinal construction joints in sig formed pavements may be made with a groover or lock, if such device has been approved in advance by the Department.
- The locations of the Type B longitudinal construction joints in the sections may be interchanged for the different widths of construction if approved by the Department.

NOTE: Joint filler material shall meet ASTM designations as follows:
 Bituminous type: ASTM D-395, AGHD M-301 or ASTM D-1180-74, AGHD M-173-84 or latest revision thereof.
 Non-extruding & resilient non-bituminous type (rubber): ASTM D-5249

NOTE: Joint sealant material shall meet ASTM and MSRD designations as follows:
 ASTM D-395, AGHD M-301 or ASTM D-1180-74, AGHD M-173-84 or latest revision thereof.



GENERAL NOTES:

- Do not scale drawing. Follow dimensions.
- Sidewalk cross slope 0.02/ft.
- Sidewalk thickness increases to 6" on each side of Private Driveways and 7" on each side of Commercial Driveways for one section of sidewalk equal in length to the width of the sidewalk. See 'Entrance Construction Details'.
- Sidewalk thru private and commercial driveways will be paid for as 6" and 7" approaches, see 'Integral Curb Detail B' at Driveways'.
- For sidewalk locations on Curb-In-Side see 'Pavement Construction Details'.
- For longitudinal and transverse joints, dowel, and tie bar requirements and dimensions refer to the 'Integral Curb Pavement Typical Sections and Details'.
- All necessary pavement markings by St. Charles County.
- For roadway cross slopes, pavement types, and thickness, refer to 'Standard Typical Section'.
- See 'Integral Curb Detail B' at Driveways' for preformed expansion joint requirements.

SAINT CHARLES COUNTY
 HIGHWAY DEPARTMENT
 ST. CHARLES, MISSOURI

CONCRETE SIDEWALK

DATE: October, 2002
 DRAWING: C608.14

PICKETT RAY & SILVER

CIVIL ENGINEERS
 PLANNERS
 LAND SURVEYORS

333 Mid Rivers Mall Drive
 St. Peters, MO 63376
 Phone (636) 397-1211
 Fax (636) 397-1104

130 FOX HILL ROAD
 ST. CHARLES, MO 63301
 (636) 940-9300

**CROSSINGS INDUSTRIAL PHASE 2
 CONSTRUCTION DETAILS**

Prepared For:
SUMMIT POINTE L.C.

REVISONS	NO.	DATE	PER THE CITY OF OTTAWAY	PER CITY COMMENTS
	1	09/19/03		
	2	09/23/03		

ENGINEERS AUTHENTICATION
 The responsibility for professional engineering liability on this project is hereby limited to the set of plans authenticated by the seal, signature, and date hereunder attached. Responsibility is disclaimed for all other engineering plans involved in this project and specifically includes revisions after this date unless reauthenticated.

PICKETT, RAY & SILVER, INC.
 STATE OF MISSOURI
 REGISTERED PROFESSIONAL ENGINEER
 HAROLD J. BARTCH
 NUMBER E-17751
 EXPIRES 12/31/04

DRAWN	DATE
E.J.S.	03/20/03

CHECKED	DATE
D.W.D.	03/20/03

PROJECT # 01212.SUPO.01R
 TASK # 2 FIELD 826
 BOOK

SHEET 7 OF 9
 Copyright 2003 by Pickett, Ray & Silver Inc.