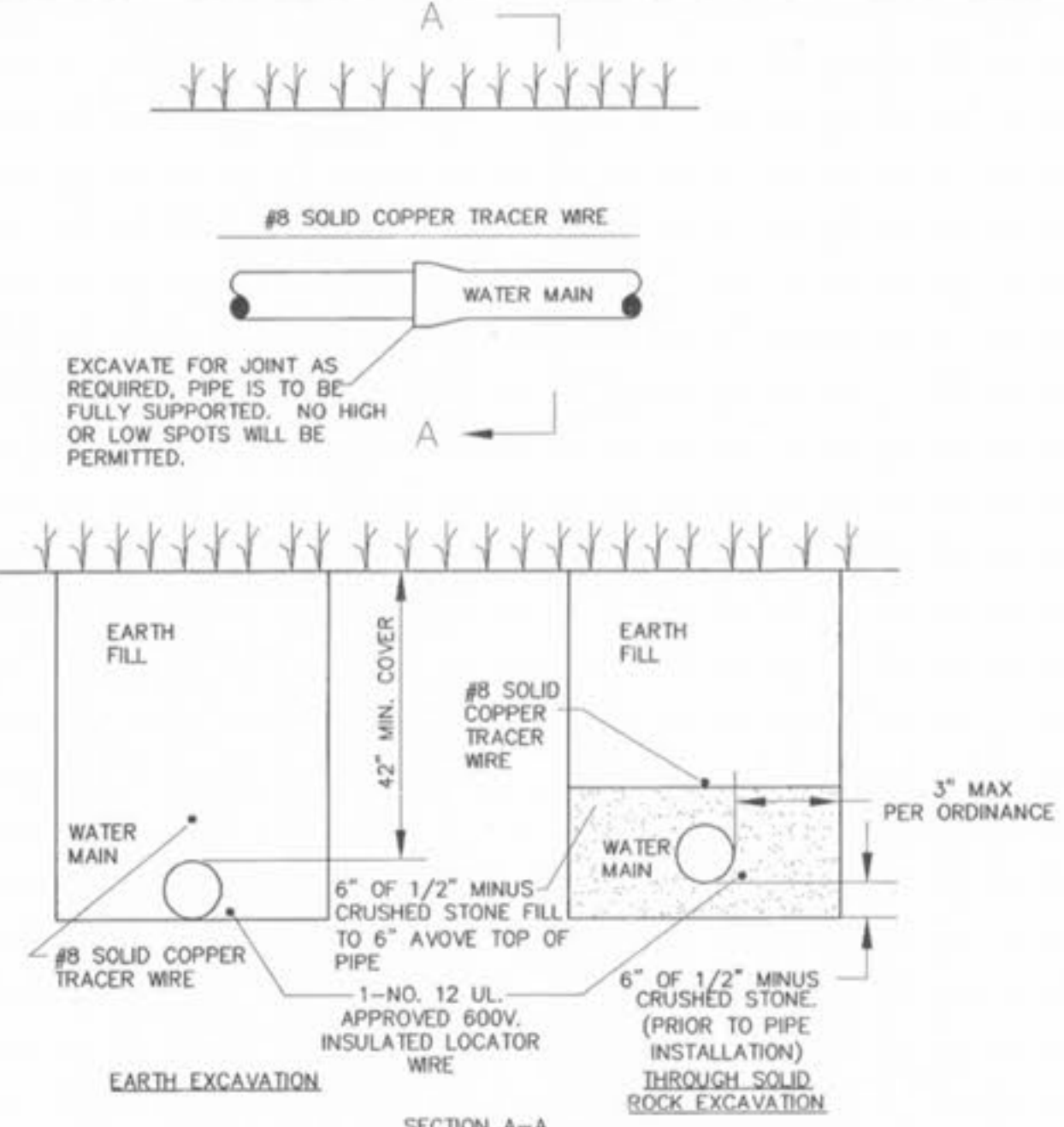
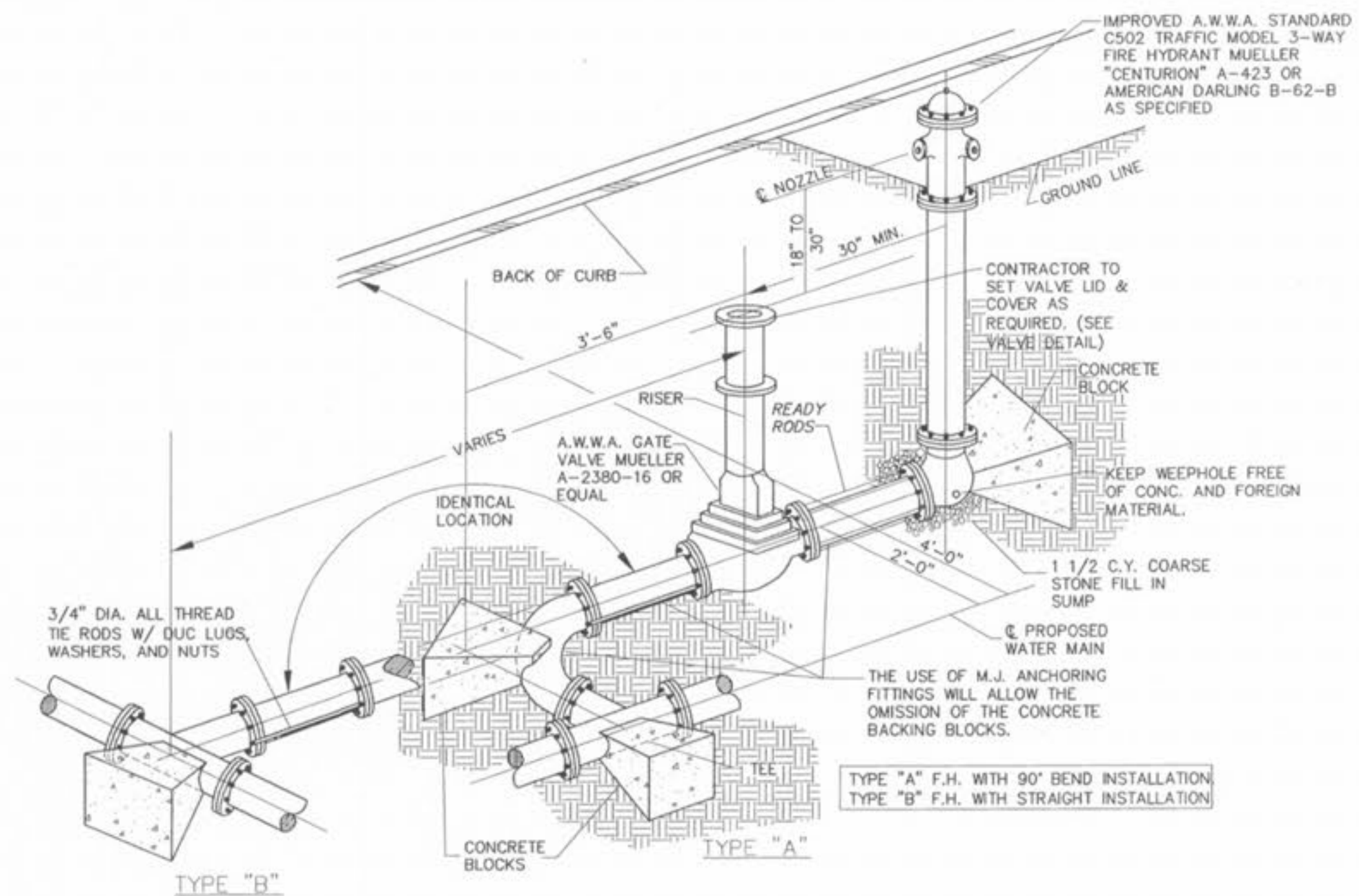


TYPICAL WATER MAIN AND FIRE HYDRANT LOCATIONS

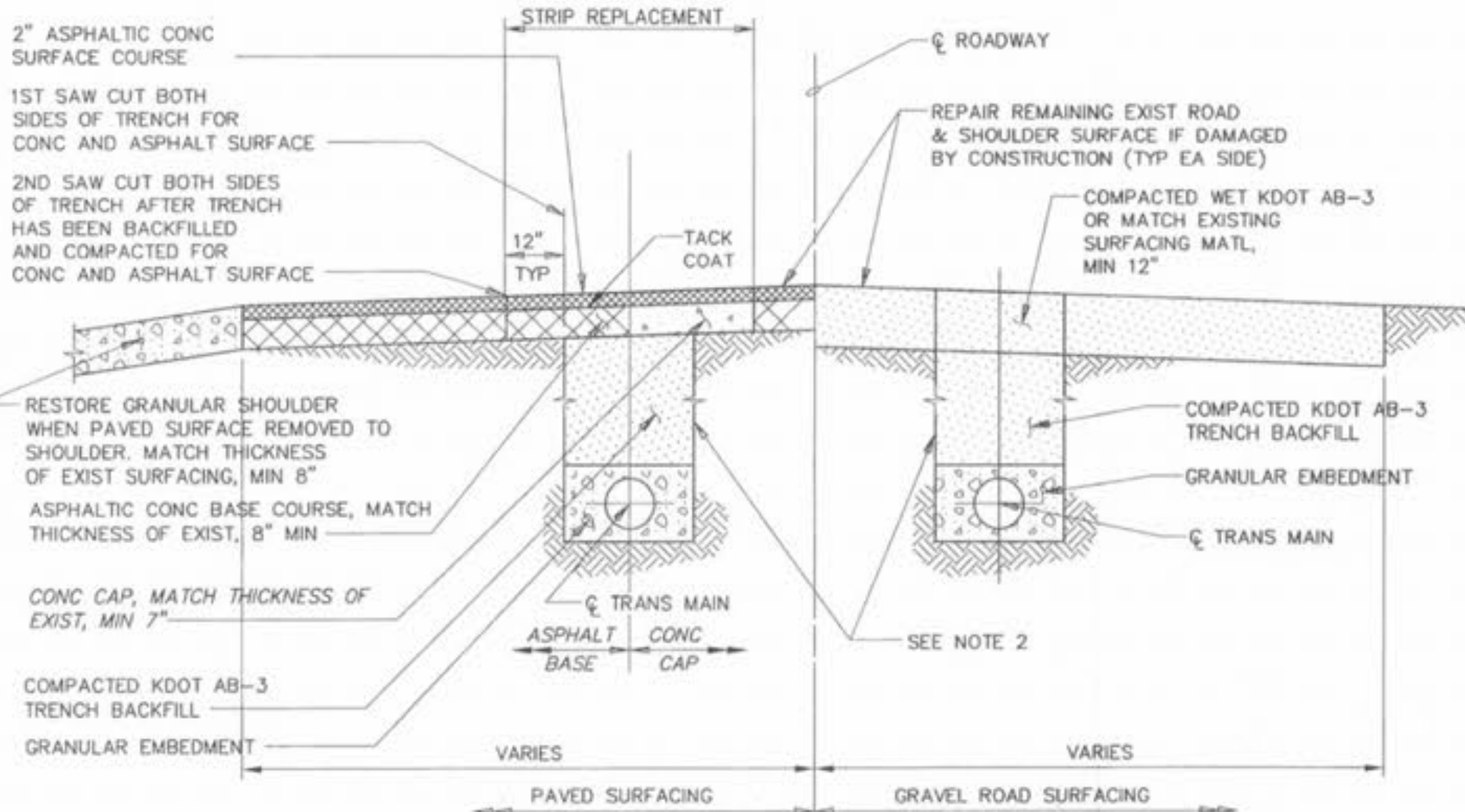
| CONFIGURATION                                  | A  | B  | C   |
|--|----|----|-----|
| 50' RIGHT-OF-WAY/26' PAVEMENT/WITHOUT SIDEWALK | 4' | 2' | N/A |
| 50' RIGHT-OF-WAY/26' PAVEMENT/WITH SIDEWALK    | 4' | 2' | 1'  |



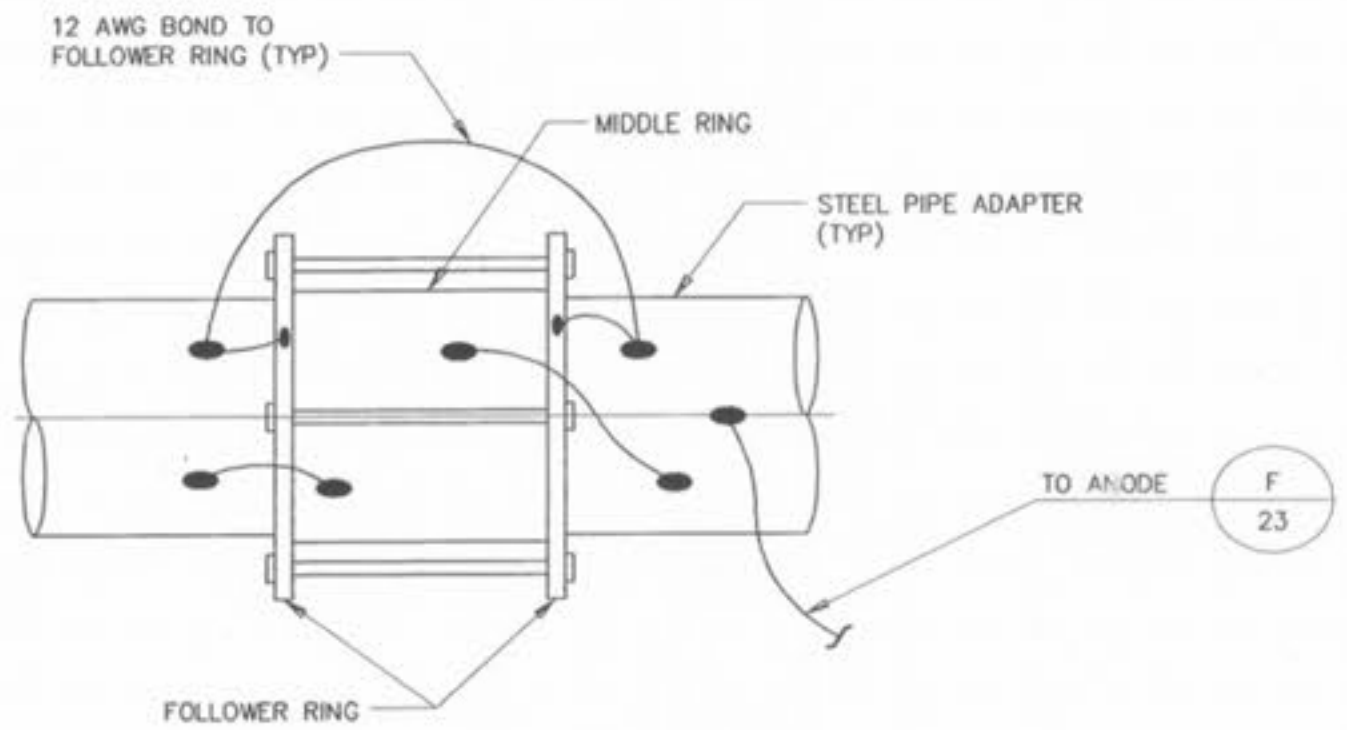
TYPICAL WATER MAIN INSTALLATION DETAILS



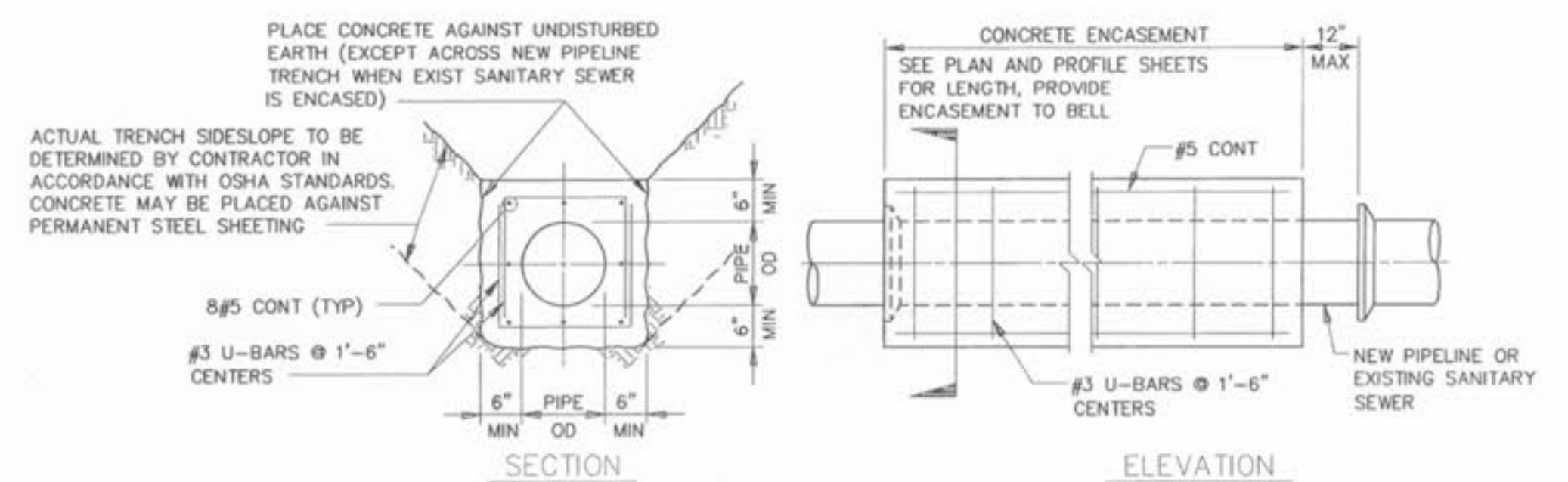
FIRE HYDRANT DETAIL



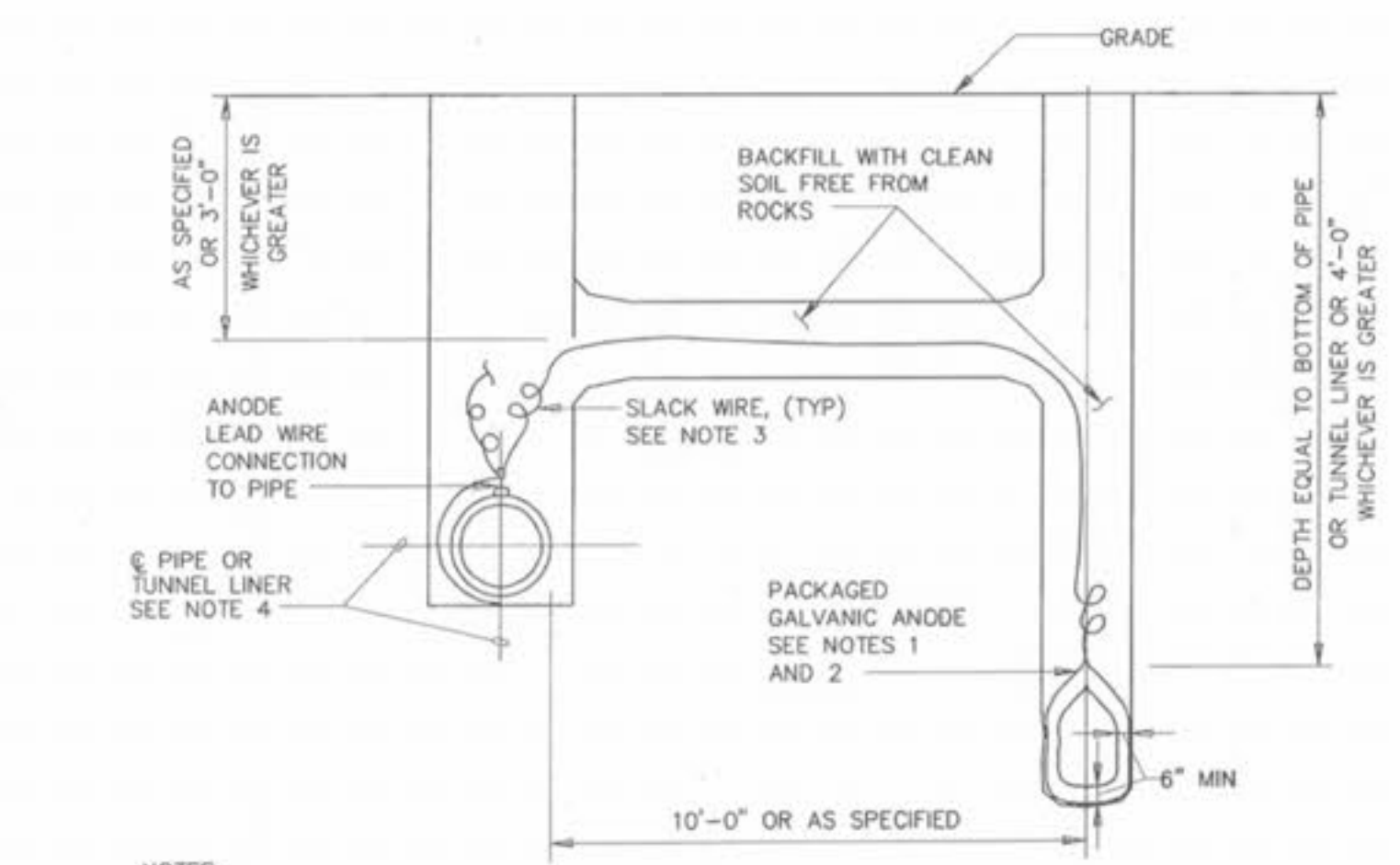
STREET TRENCHING DETAIL AND CROSSING SECTION



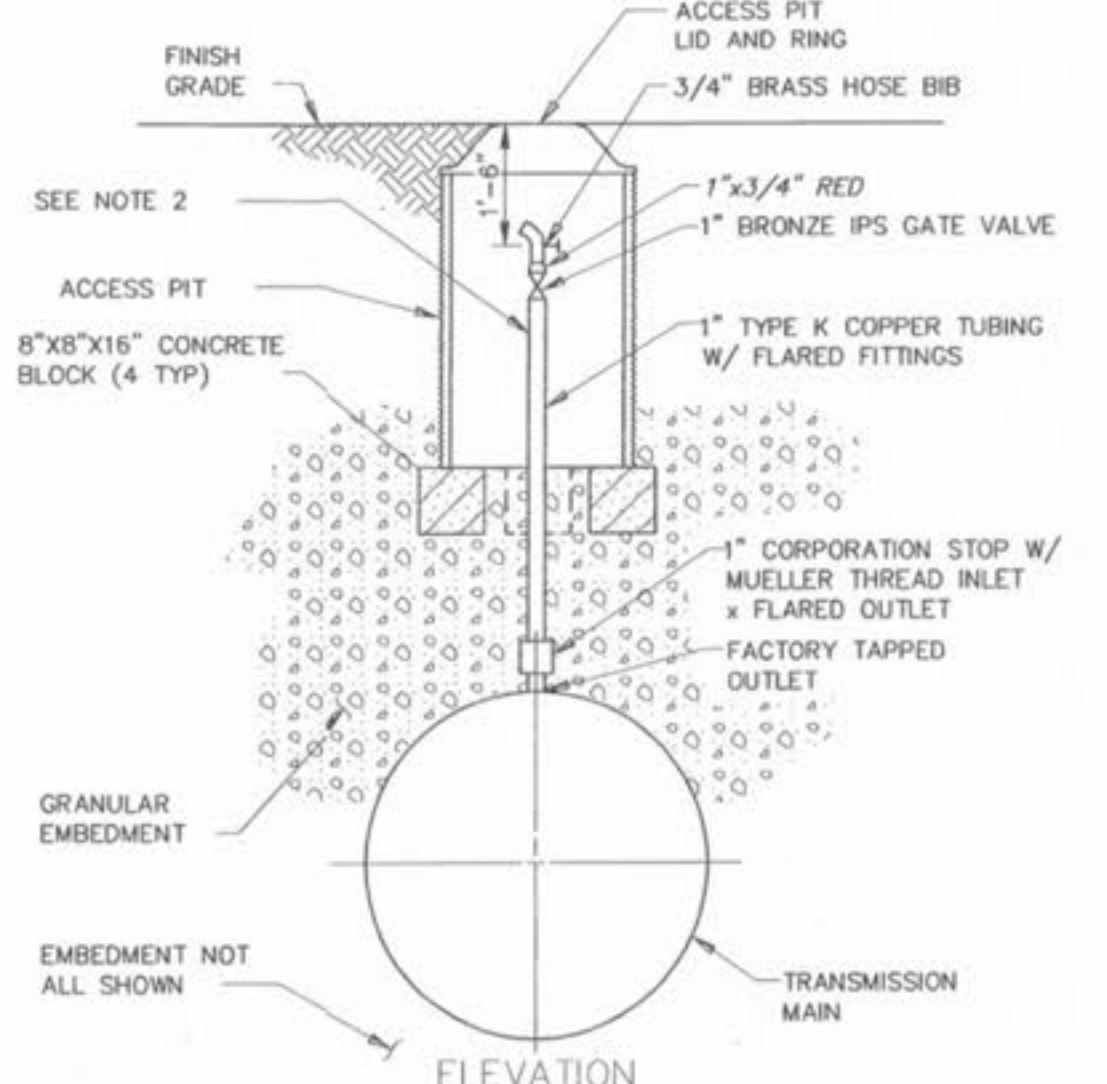
JOINT BONDING OF STEEL PIPE ADAPTERS FOR PCCP ALTERNATIVE



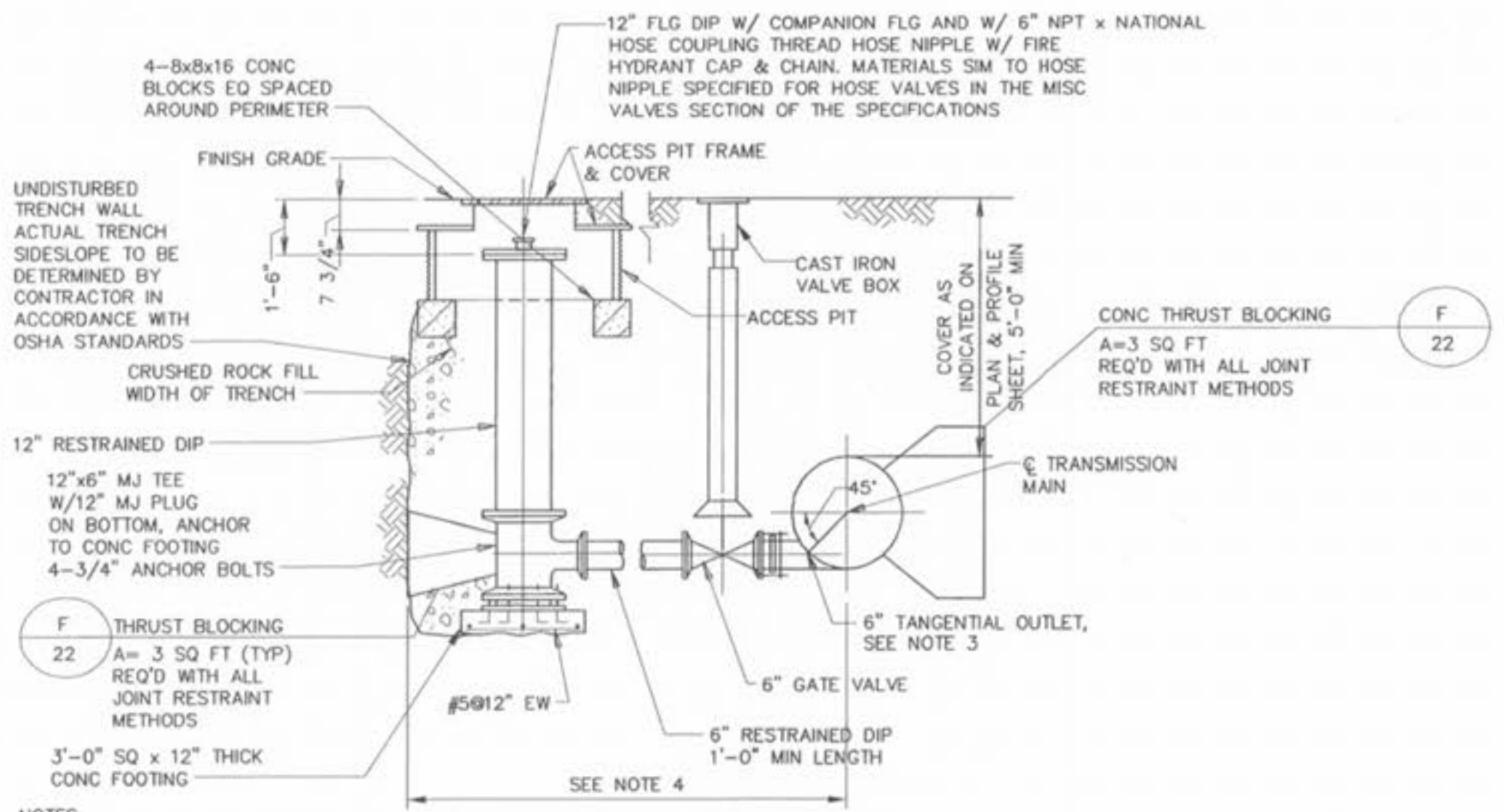
CONCRETE ENCASEMENT



ANODE INSTALLATION FOR STEEL PIPE ADAPTERS FOR PCCP ALTERNATIVE AND FOR TUNNEL LINERS



MANUAL AIR RELEASE VALVE ASSEMBLY



BLOWOFF FACILITY

**PICKETT RAY & SILVER**

CIVIL ENGINEERS  
PLANNERS  
LAND SURVEYORS

333 Mid Rivers Mall Drive  
St. Peters, MO 63376  
Phone (636) 397-1211  
Fax (636) 397-1104

**CROSSINGS INDUSTRIAL PHASE 2**

CONSTRUCTION DETAILS

Prepared For:  
**SUMMIT POINTE L.C.**

239 FOX HILL ROAD  
ST. CHARLES, MO. 63301  
(636) 949-9500

| REVISIONS | NO. | DATE     | PER CITY COMMENTS |
|-----------|-----|----------|-------------------|
|           | 1   | 09/23/03 |                   |

**ENGINEERS AUTHENTICATION**

The responsibility for professional engineering liability on this project is hereby limited to the set of plans authenticated by the seal, signature, and date hereunder attached. Responsibility is disclaimed for all other engineering plans involved in this project and specifically excludes revisions after this date unless reauthenticated.

**PICKETT, RAY & SILVER, INC.**

HAROLD J. BARTCH  
REGISTERED PROFESSIONAL ENGINEER  
E-17751

| DRAWN  | DATE     | CHECKED | DATE     |
|--------|----------|---------|----------|
| E.J.S. | 03/20/03 | D.W.D.  | 03/20/03 |

PROJECT # 01212.SUPO.01R  
TASK # 2 FIELD 826 BOOK