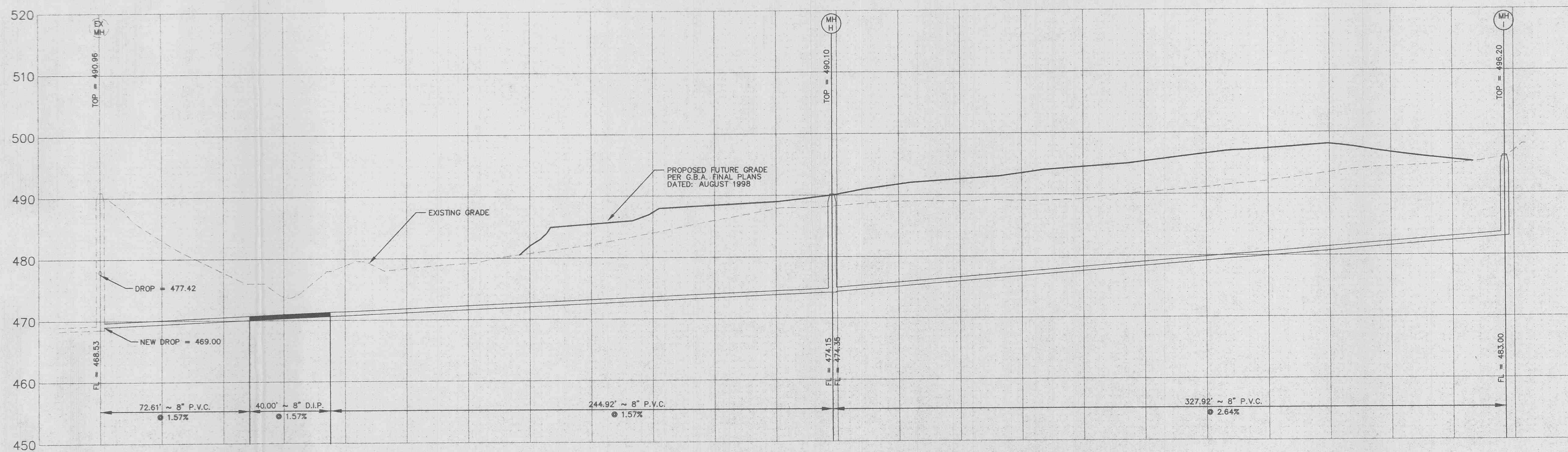
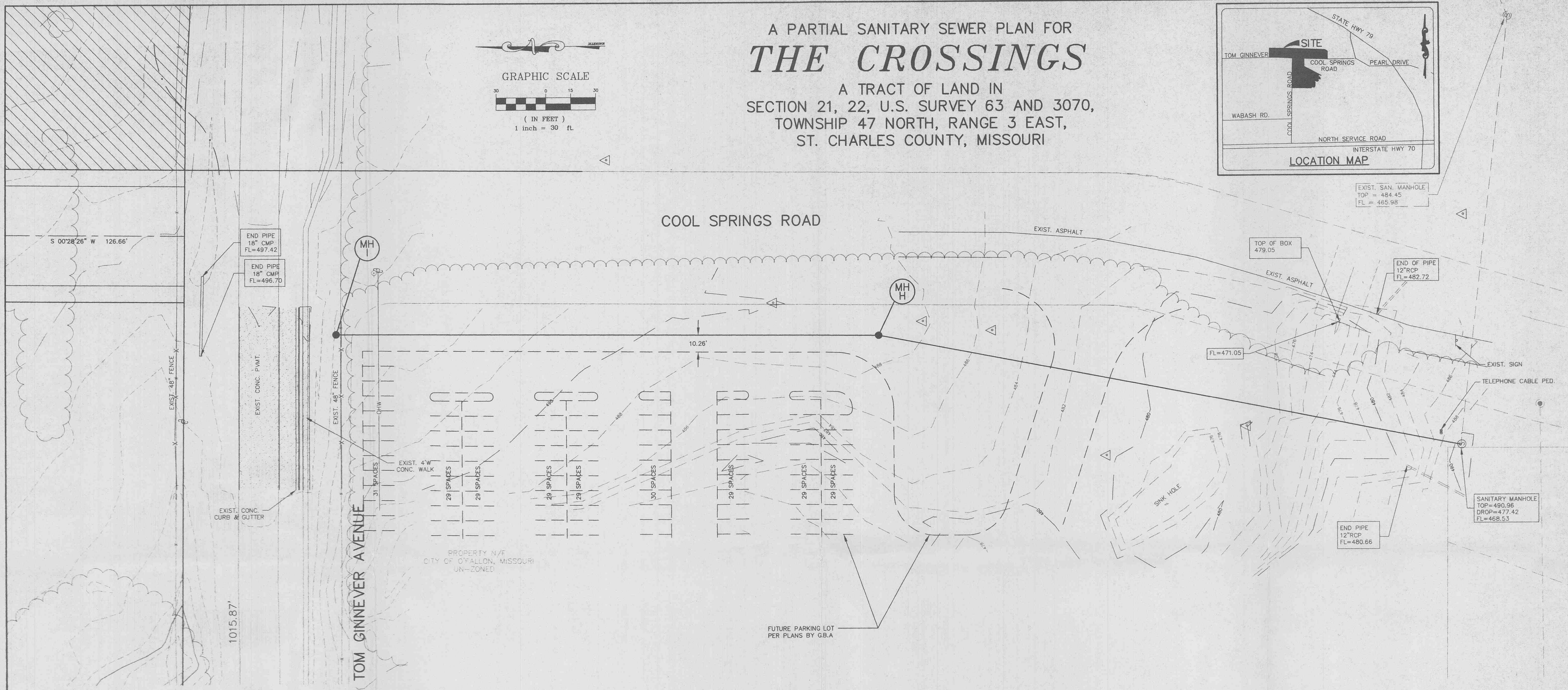
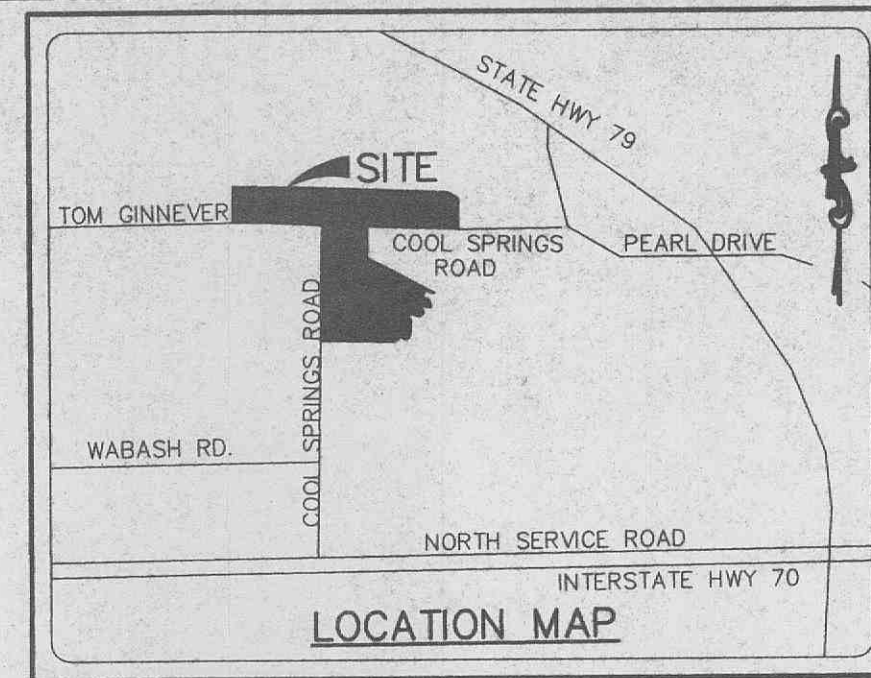
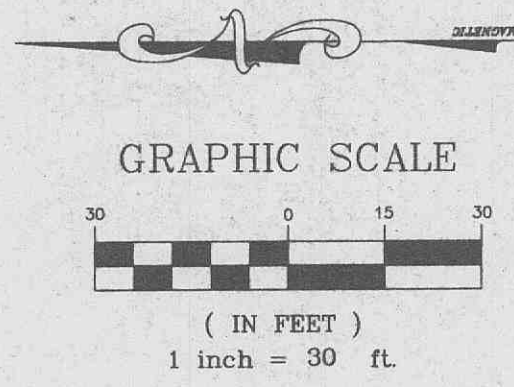


A PARTIAL SANITARY SEWER PLAN FOR
THE CROSSINGS
 A TRACT OF LAND IN
 SECTION 21, 22, U.S. SURVEY 63 AND 3070,
 TOWNSHIP 47 NORTH, RANGE 3 EAST,
 ST. CHARLES COUNTY, MISSOURI



SANITARY SEWER PROFILE

SCALE: 1" = 30' H.
 SCALE: 1" = 10' V.

PREPARED FOR:
 T.R. HUGHES
 239 FOXHILL ROAD
 ST. CHARLES, MO 63301
 (314) 940-9300

DISCLAIMER OF RESPONSIBILITY
 I hereby specify that the documents intended to be authorized by my seal are limited to this sheet, and I hereby disclaim any responsibility for all other drawings, specifications, estimates, reports or other documents or instruments relating to or intended to be used for any part or parts of the architectural or engineering project or survey.

Copyright 1998
 Box Engineering Company, Inc.
 All Rights Reserved

REVISIONS	
8/4/98	REVISIONS
8/17/98	CITY COMMENTS
9/17/98	REVISIONS

Box Engineering Planning Surveying
 1052 South Cloverleaf Drive
 St. Peters, MO. 63376-8445
 314-928-5552
 FAX 928-1716

07-17-98
 DATE
 97-92301
 PROJECT NUMBER
 2 of 2
 SHEET OF
 9203SAN.DWG
 FILE NAME
 RJS
 DRAWN CHECKED

\\bax10-dp1\ve\dms\9203san.dwg Thu Sep 17 08:18:49 1998 STATION B SWI