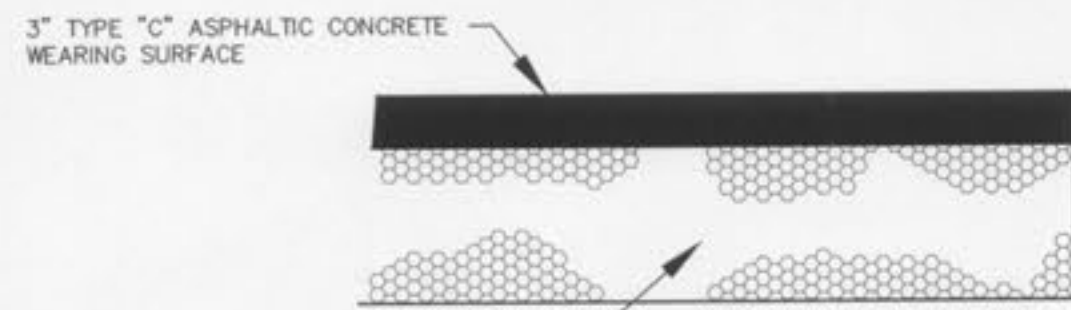


ROCK TRAIL DETAIL
NOT TO SCALE

- APPLICATION OF BASE ROCK**
- SPREAD CLEAN COURSE ROCK AT THE SPECIFIC THICKNESS
 - BLADE TO UNIFORM PLANE
 - COMPACT ROCK WITH POWER-DRIVEN ROLLER
- COMPACTION**
- COMPACTION SHALL BE COMPLETED UTILIZING STEEL WHEELED, PNEUMATIC-TIRED AND/OR VIBRATORY ROLLER, RANGING IN WEIGHT FROM 5 TO 12 TONS.
 - CONTRACTOR SHALL BE REQUIRED TO UTILIZE THE HEAVIEST PIECE OF EQUIPMENT PRACTICAL FOR THE CONDITIONS AND AREAS OF PAVEMENT TO BE INSTALLED.
 - IN AREAS TOO SMALL FOR THE ROLLER, A VIBRATING PLATE COMPACTOR OR HAND TAMPER SHALL BE USED TO ACHIEVE THROUGH COMPACTION.
 - THE FOLLOWING COMPACTION REQUIREMENTS SHALL BE MET:
 - BASE COURSE (ROCK) SHALL BE COMPACTED TO NOT LESS THAN 100% STANDARD PROCTOR, AS DETERMINED IN ACCORDANCE WITH ASTM D-698.
- (SPECIFICATIONS ABOVE ARE THE SAME AS IN SECTION 02500 3.7 UNDER THE BID SET DOCUMENTS)

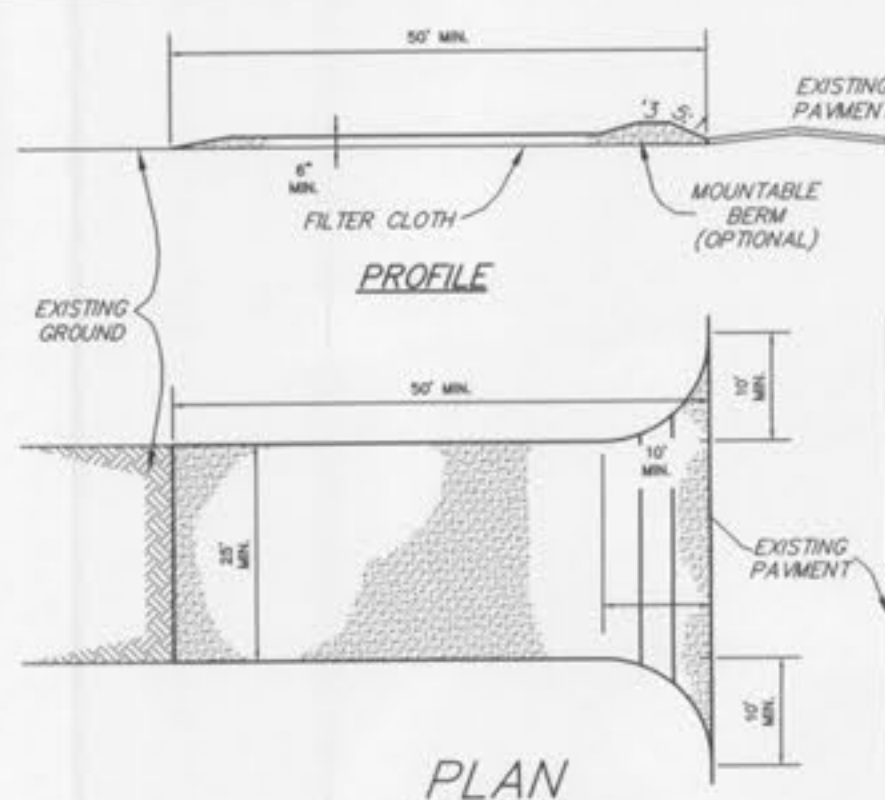


TRASH ENCLOSURE PAVEMENT DETAIL
NOT TO SCALE



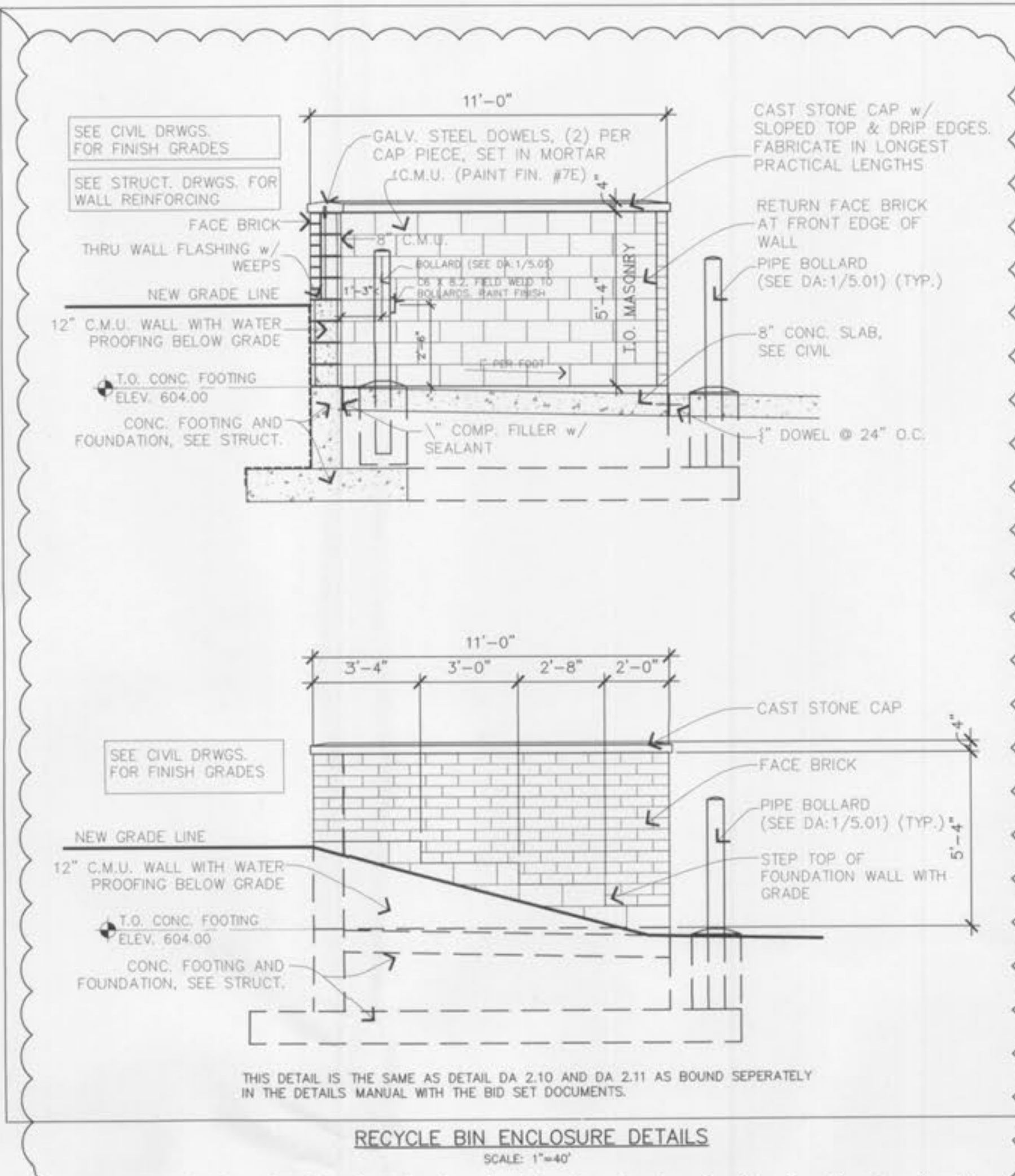
PLAYGROUND ASPHALT PAVEMENT DETAIL
NOT TO SCALE

STABILIZED CONSTRUCTION ENTRANCE

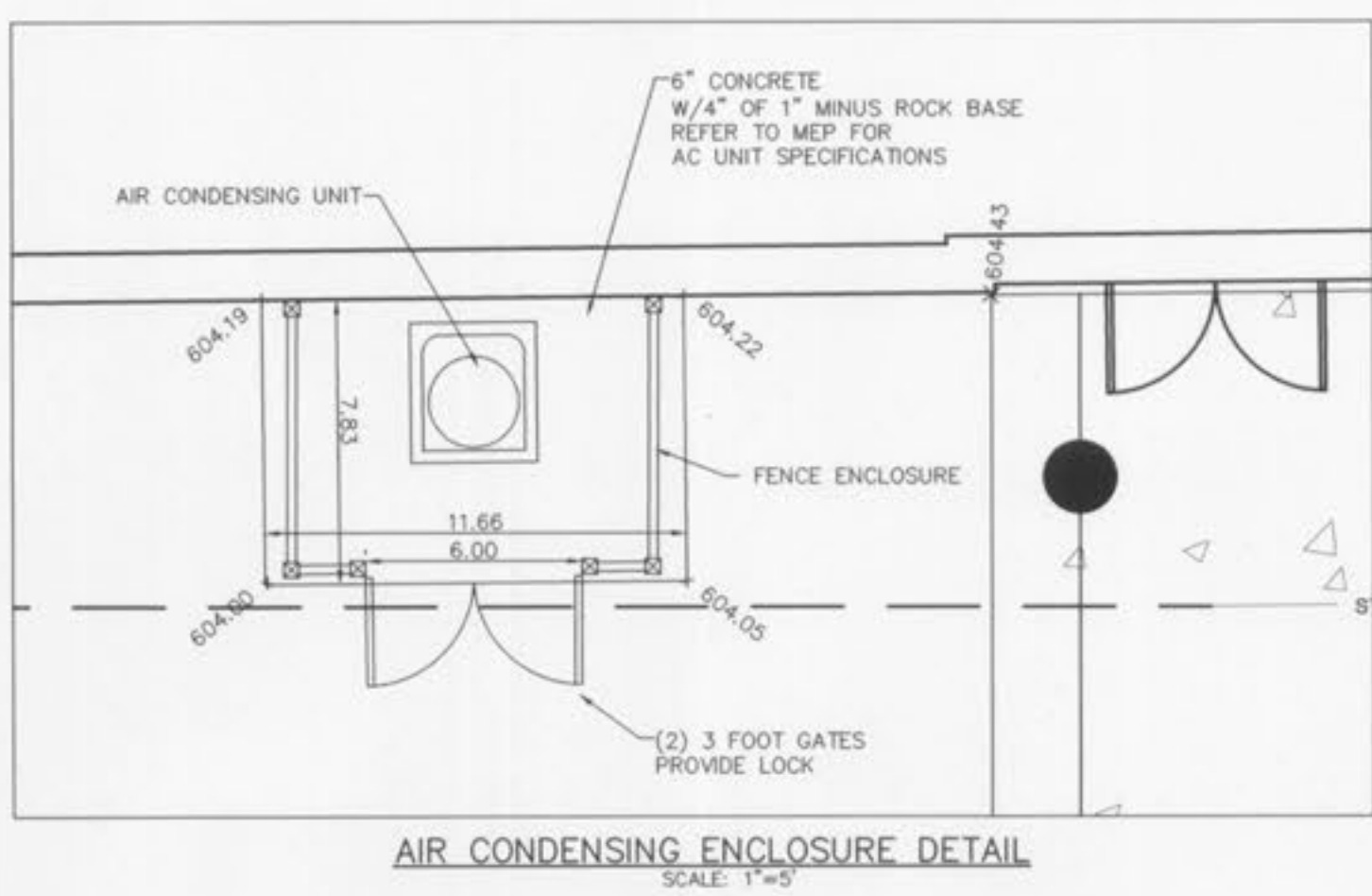


CONSTRUCTION SPECIFICATIONS

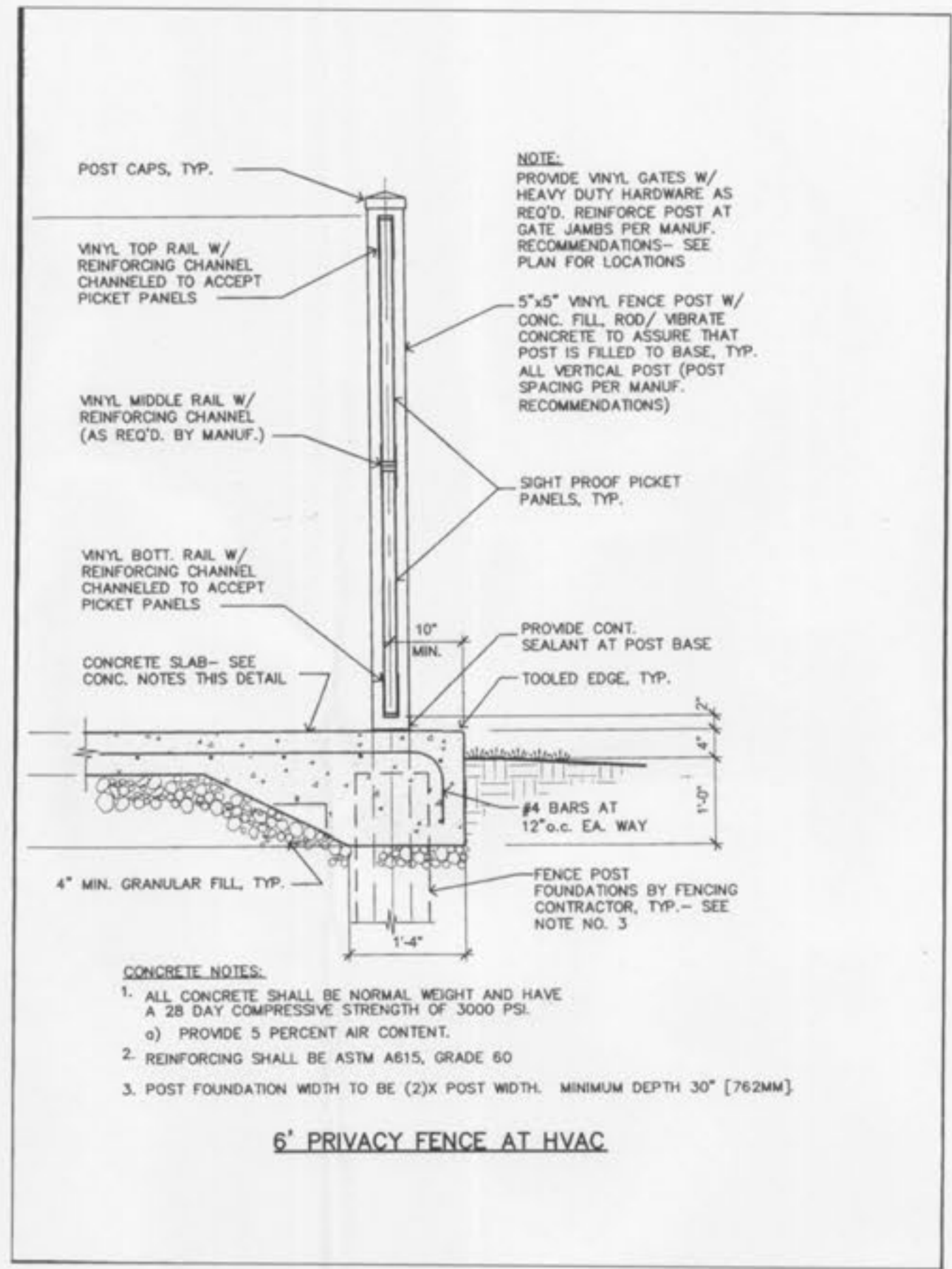
- Stone Size - Use 2" stone, or reclaimed or recycled concrete equivalent.
- Length - As required, but not less than 50 feet (except on a single residence lot where a 30 foot minimum length would apply).
- Thickness - Not less than six (6) inches.
- Width - Twenty-five (25) foot minimum, but not less than the full width at points where ingress or egress occurs.
- Filter Cloth - Will be placed over the entire area prior to placing of stone. Filter will not be required on a single family residence lot.
- Surface Water - All surface water flowing or diverted toward construction entrances shall be piped across the entrance. If piping is impractical, a mountable berm with 5:1 slopes will be permitted.
- Maintenance - The entrance shall be maintained in a condition which will prevent tracking or flowing of sediment onto public rights-of-way. This may require periodic top dressing with additional stone as conditions demand and repair and/or cleanout of any measures used to trap sediment. All sediment spilled, dropped, washed or tracked onto public rights-of-way must be removed immediately.
- Washing - Wheels shall be cleaned to remove sediment prior to entrance onto public rights-of-way. When washing is required, it shall be done on an area stabilized with stone and which drains into an approved sediment trapping device.
- Periodic inspection and needed maintenance shall be provided after each rain.



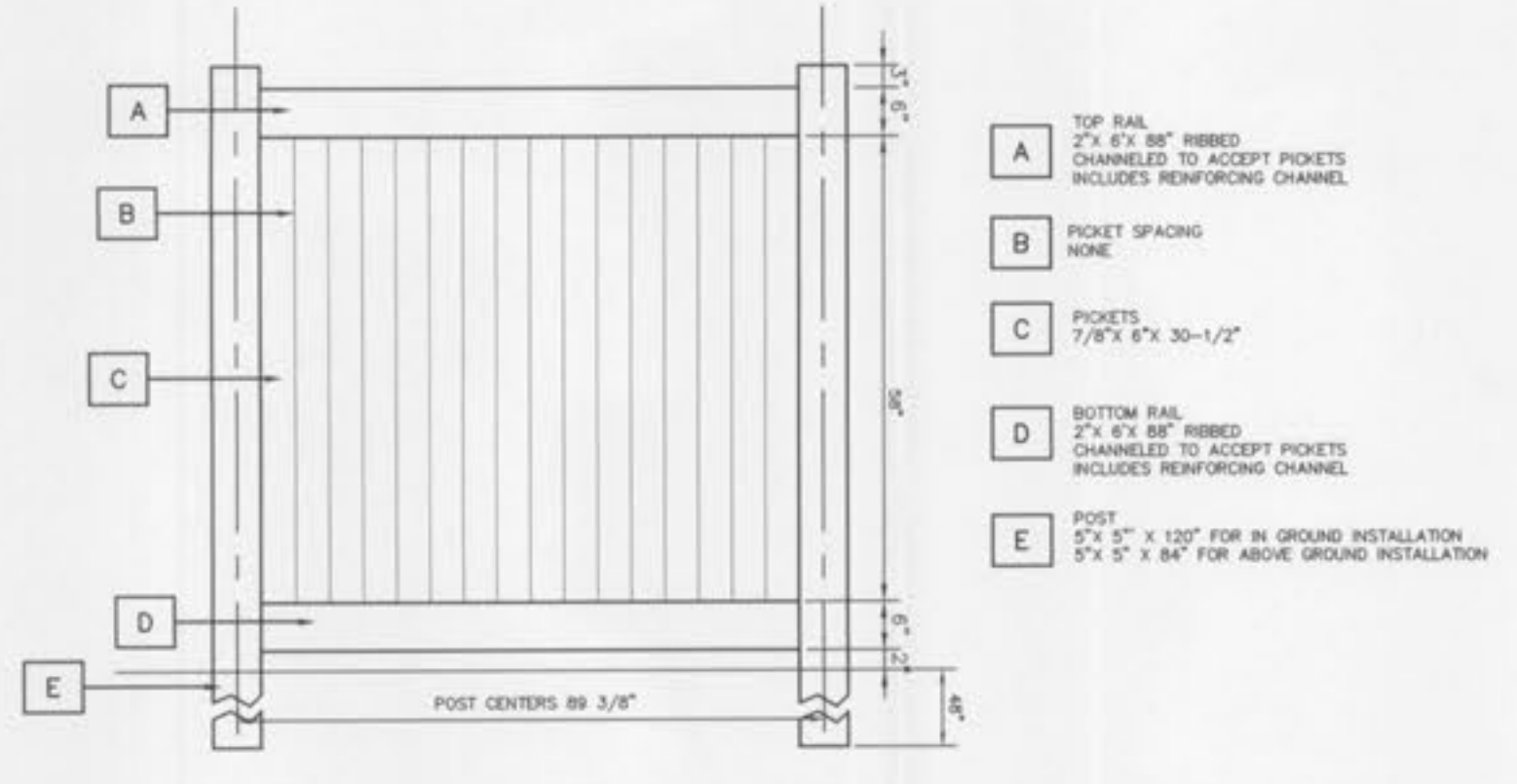
RECYCLE BIN ENCLOSURE DETAILS
SCALE: 1"=4'



AIR CONDENSING ENCLOSURE DETAIL
SCALE: 1"=5'

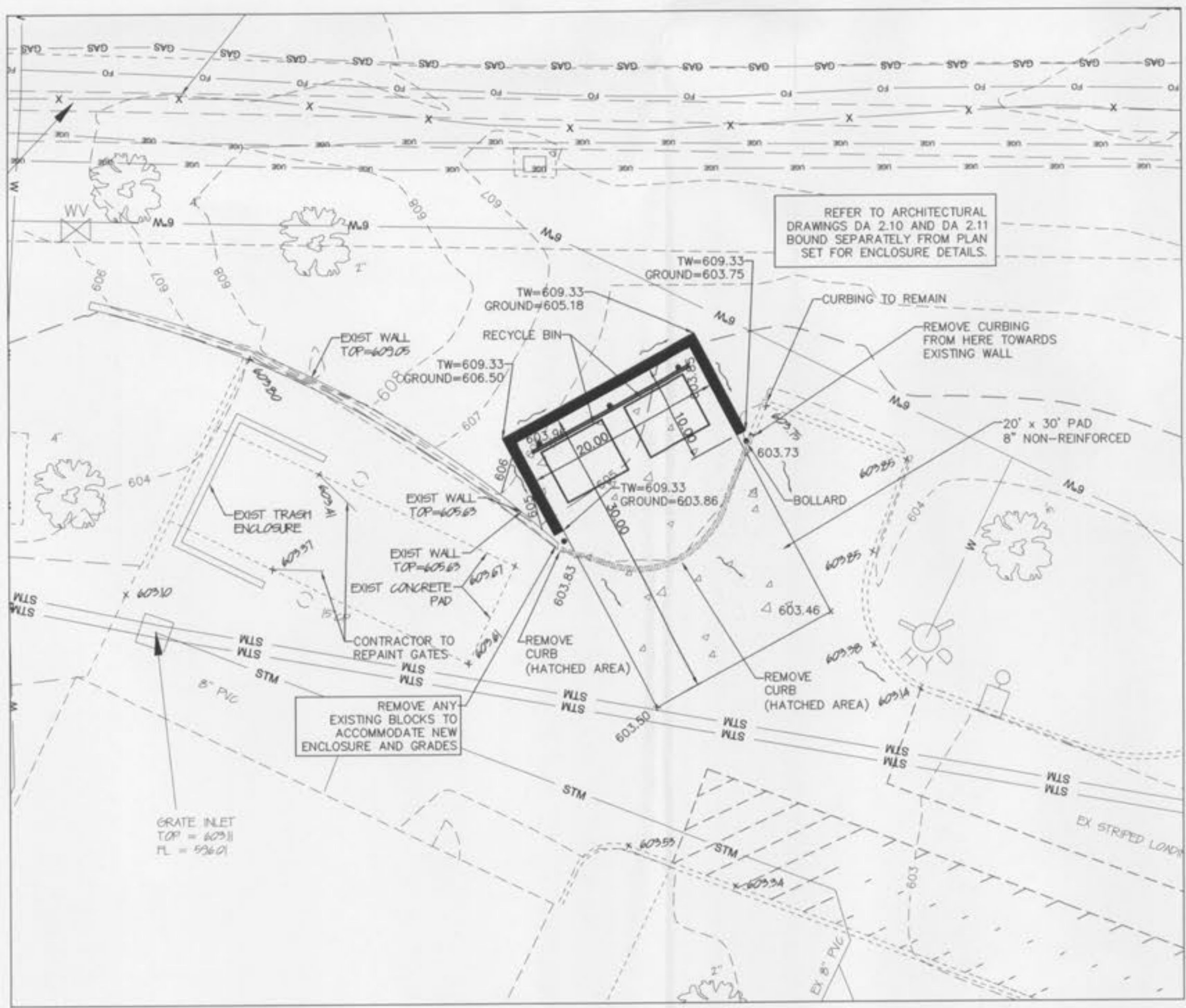


6' PRIVACY FENCE AT HVAC

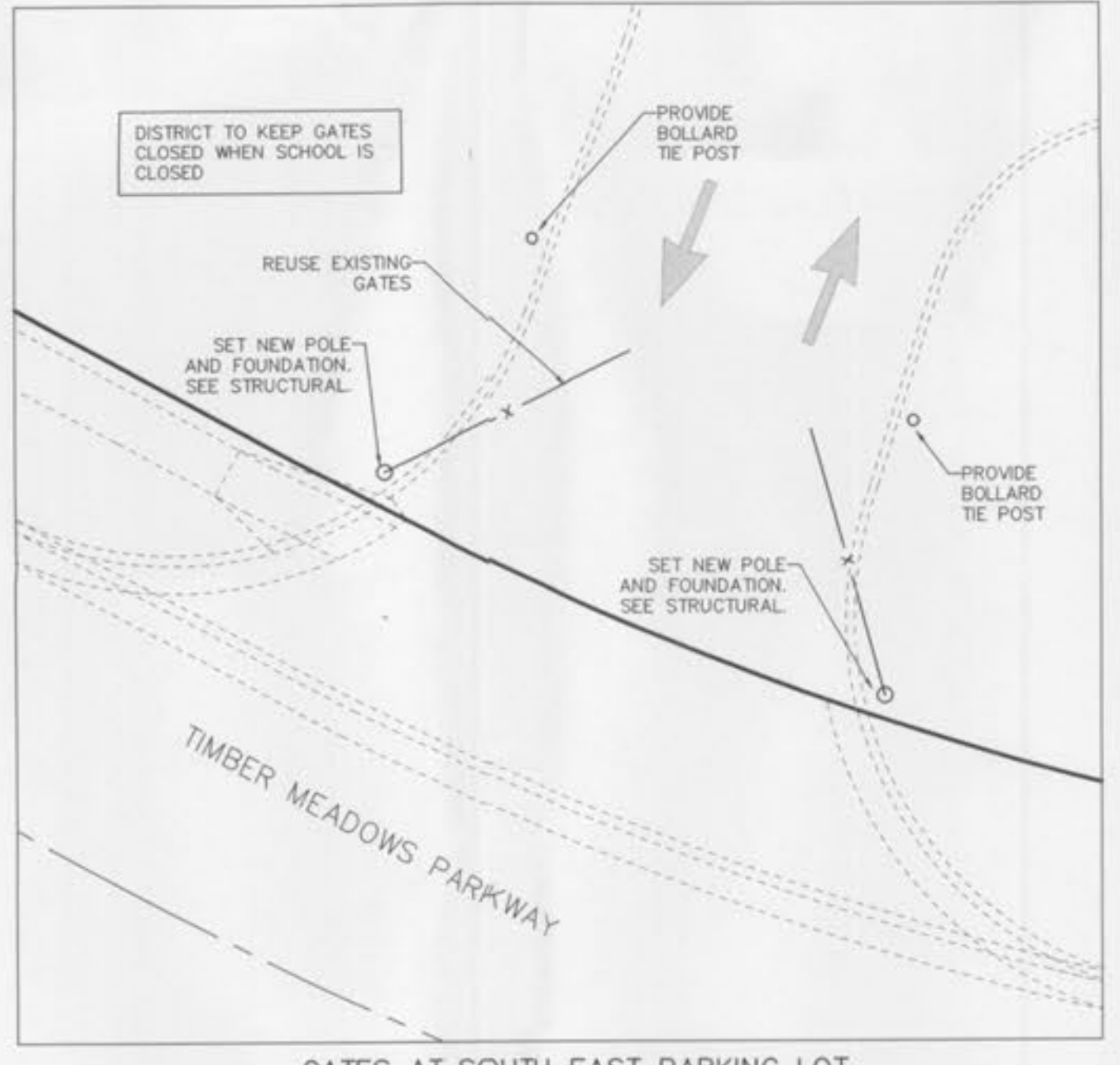


6' HIGH VINYL PRIVACY FENCE
NOT TO SCALE

DETAIL IS FOR REPRESENTATION OF THE TYPE OF FENCING TO BE USED. ACTUAL DIMENSIONS WILL BE DETERMINED BY THE MANUFACTURER, ONCE SELECTED. FENCE TO BE SIGHT PROOF WITH NO SPACING BETWEEN PICKETS. FENCE TO BE VINYL AND CONTRACTOR TO SUBMIT FENCING DETAILS TO CITY AND DISTRICT ONCE SELECTED.



RECYCLE BIN ENCLOSURE DETAIL
SCALE: 1"=10'
ALL SPOT ELEVATIONS ARE TOP OF FINISH GROUND OR TOP OF FINISH PAVEMENT



GATES AT SOUTH EAST PARKING LOT
SCALE: 1"=10'

PROJECT TITLE:
CROSSROADS
ELEMENTARY SCHOOL

**ENGINEERING
PLANNING
SURVEYING**
221 Point West Blvd.
St. Charles, MO 63301
636-928-3552
FAX 636-928-1718



DISCLAIMER OF RESPONSIBILITY
I hereby certify that the documents intended to be authenticated by my seal are limited to this sheet, and I hereby disclaim any responsibility for all other drawings, specifications, estimates, reports or other documents or instruments relating to or intended to be used for any part or parts of the architectural or engineering project.

CLIFFORD L. HEITMANN
REGISTERED PROFESSIONAL ENGINEER
NUMBER E-29817
8-22-11

CLIFFORD L. HEITMANN
CIVIL ENGINEER
029817

Copyright 2011
Box Engineering Company, Inc.
Authority No. 000655
All Rights Reserved.

REVISIONS

NO.	DATE	DESCRIPTION
7-22-11		BID SET
8-10-11		ADDENDUM #1
8-12-11		ADDENDUM #2
8-15-11		ADDENDUM #3
8-22-11		CITY COMMENTS

Developer / Owner:
WENTZVILLE R-V SCHOOL DISTRICT
ONE CAMPUS DRIVE
WENTZVILLE, MISSOURI/63385
636-327-3800

CONSTRUCTION DETAILS

P+Z No. 9831.11.04
City No. MAY 5, 2011

Page No.
10 of 10