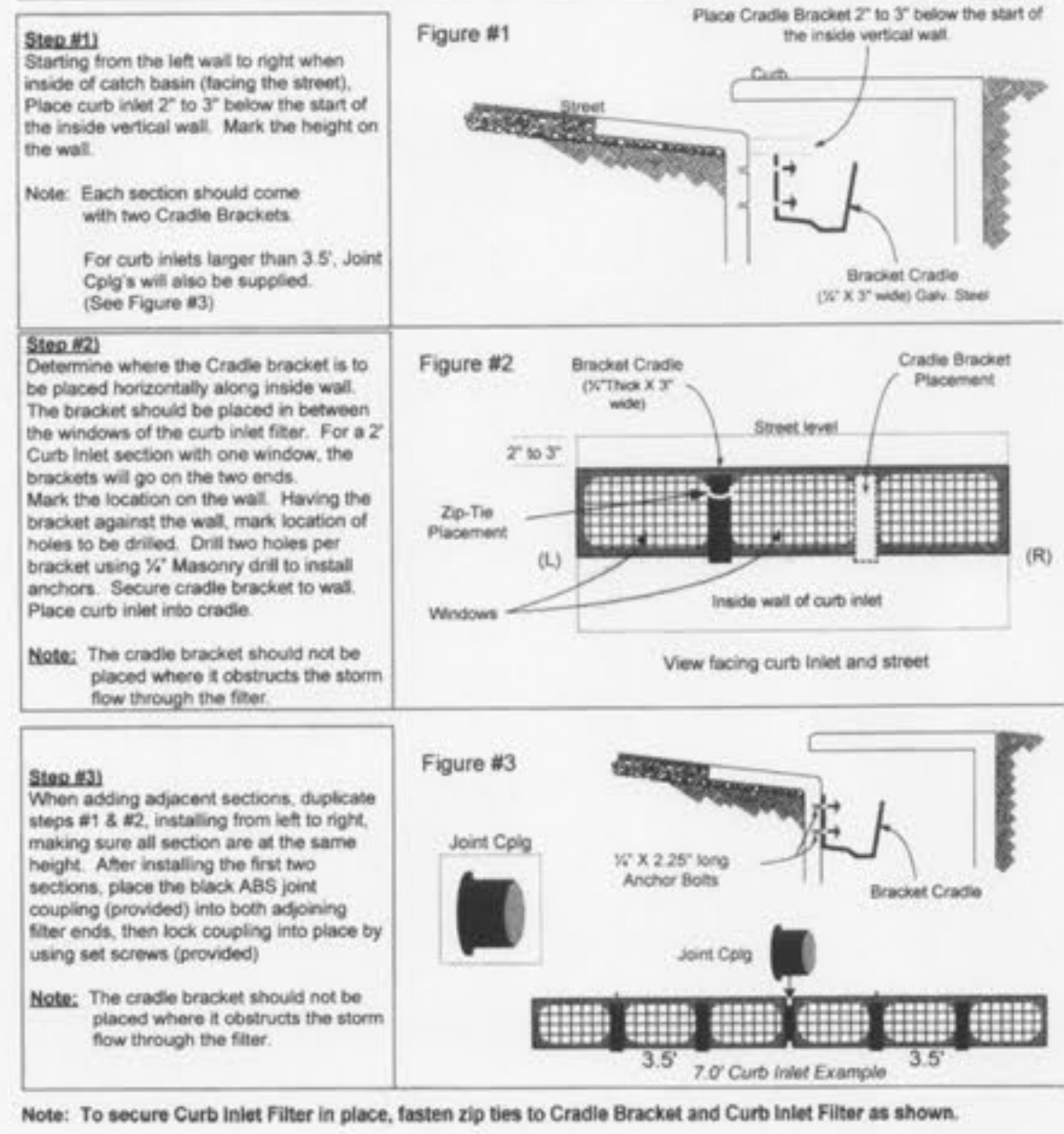




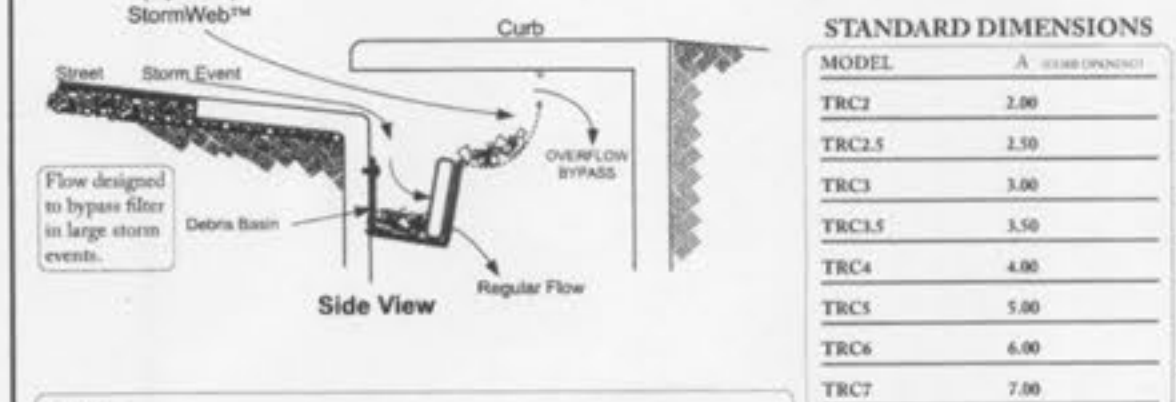
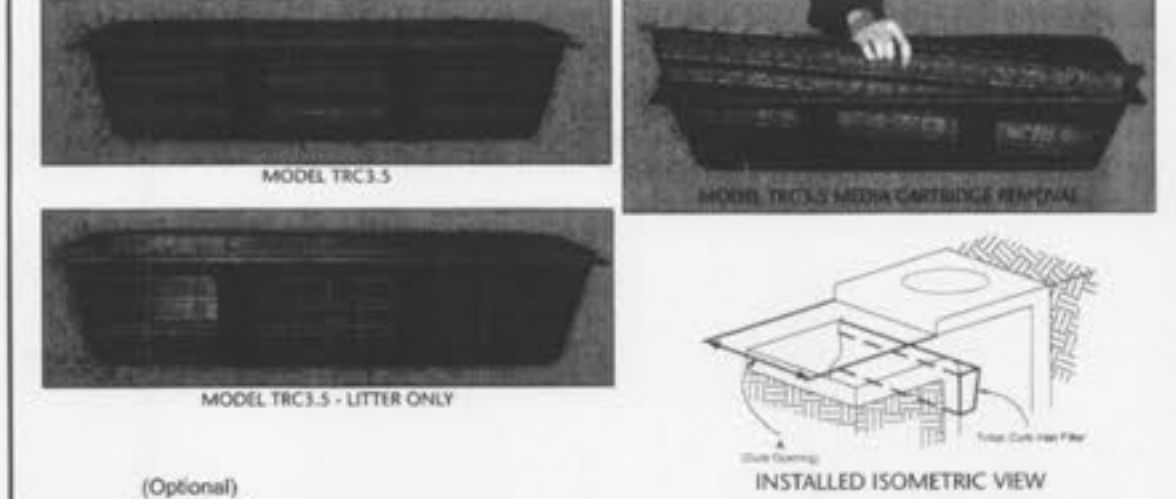
**TOOLS REQUIRED:**  
 1) Hammer Drill, with 1/4" masonry drill bit.  
 2) Hammer.  
 3) Measuring Tape.  
 4) 1/4" X 2 2/8" Concrete Anchors. i.e. (Red Head)

**For the Installation of the TRITON Curb Inlet**



**Note:** To secure Curb Inlet Filter in place, fasten zip ties to Cradle Bracket and Curb Inlet Filter as shown.

**TRITON FILTER™ CURB INLET INSERT**



**STANDARD DIMENSIONS**

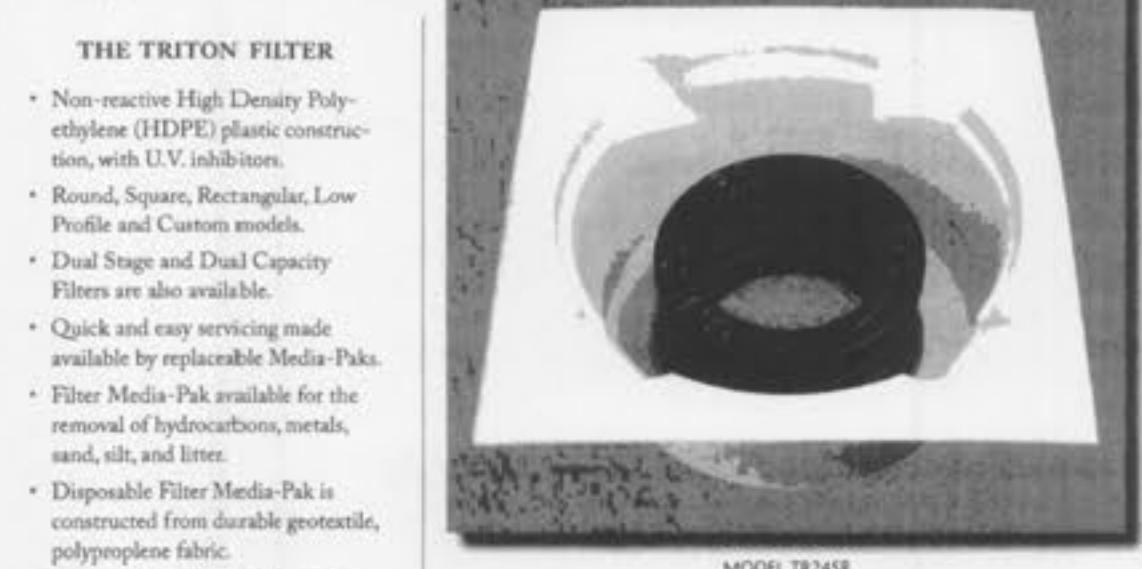
MODEL	A	B	C	D	E	F	G	H
TRC2	3.00							
TRC2.5	3.50							
TRC3	3.00							
TRC3.5	3.50							
TRC4	4.00							
TRC5	5.00							
TRC6	6.00							
TRC7	7.00							
TRC8	8.00							
TRC9	9.00							
TRC10	10.00							
TRC12	12.00							
TRC14	14.00							
TRC21	21.00							
TRC28	28.00							

**NOTES:**  
 1. All dimensions are in feet. Custom sizes also available.  
 2. Filter is constructed of High Impact Polyethylene Plastic, with UV inhibitors. Over 40% recycled content.  
 3. Disposable Media-Pak is constructed of durable geotextile fabric, woven with perforated polypropylene.  
 4. Media-Pak cage is constructed using 8 gauge Type 304 stainless steel.  
 5. Filter body is secured to inside wall using (1) 1/4" thick brackets per section, attached using 3/8" x 3" expansion anchor bolts.  
 6. Optional StormWeb™ designed for capturing larger trash and debris.  
 7. Filter media is non-hazardous per EPA and OSHA standards.  
 8. Filter shall be installed and maintained in accordance with manufacturer recommendations.  
 9. Please refer to manufacturer recommendations for an approved maintenance program.

**Revel Environmental Manufacturing Inc.**  
 888-526-4736  
 360-B Denver Avenue, Fullerton, California 92632  
 2110 South Grand Avenue, Santa Ana, California 92705  
 P: (714) 676-4736 F: (714) 557-2879

**TRITON FILTER™**

**Product Specification**



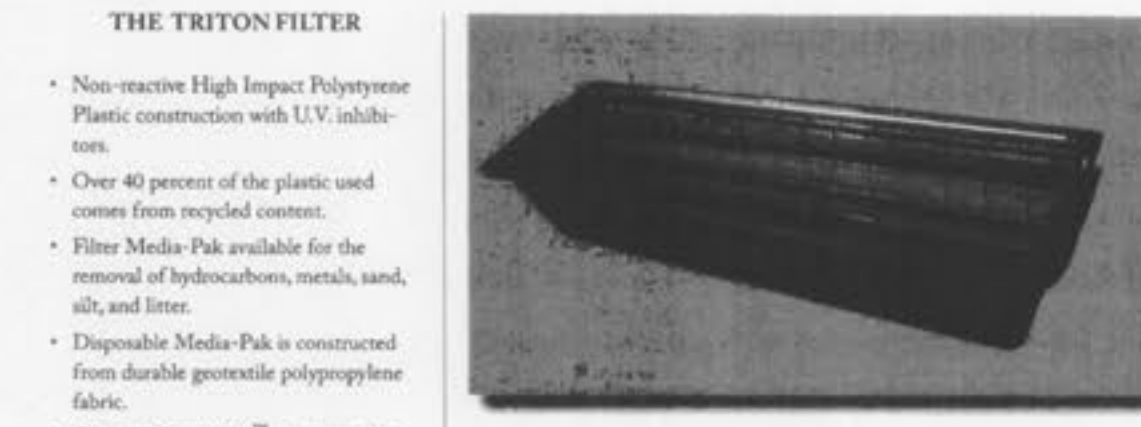
**THE TRITON FILTER**  
 • Non-reactive High Density Polyethylene (HDPE) plastic construction, with UV inhibitors.  
 • Round, Square, Rectangular, Low Profile and Custom models.  
 • Dual Stage and Dual Capacity Filters are also available.  
 • Quick and easy servicing made available by replaceable Media-Paks.  
 • Filter Media-Pak available for the removal of hydrocarbons, metals, sand, silt, and litter.  
 • Disposable Filter Media-Pak is constructed from durable geotextile, polypropylene fabric.  
 • Media-Pak can be interchanged with Geo-Trap series as site conditions change.  
 • Media is non-hazardous, per EPA and OSHA standards.  
 • Patented design with high nominal flow and high overflow capacities.  
 • Easy to install in new and existing catch basins.  
 • Meets Best Available Technology (BAT) for use in Stormwater Best Management Practices (BMP).  
 • Maintenance contracts, including recycling of all spent absorbents are available.  
 • Servicing of filters on a regular basis is a requirement to meet most local and state BMPs.

**TRITON CATCH BASIN FILTER INSERT**  
 REM has developed the TRITON Catch Basin Insert to help eliminate hydrocarbons and other contaminants such as metals, sand, silt and litter from stormwater runoff.  
 The TRITON is designed to be inserted below the grate of storm drain inlets.  
 Patent No. 6,217,757

**REVEL - HELPING KEEP YOUR WATERWAYS CLEAN**  
 REM - HELPING KEEP YOUR WATERWAYS CLEAN  
 888-526-4736

**TRITON FILTER™**

**Product Specification**

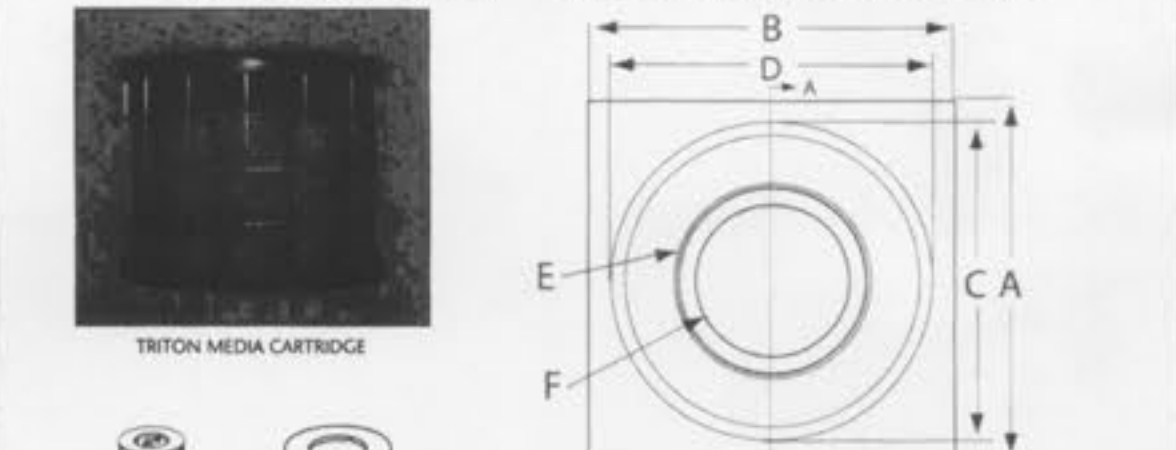


**THE TRITON FILTER**  
 • Non-reactive High Impact Polyethylene Plastic construction with UV inhibitors.  
 • Over 40 percent of the plastic used comes from recycled content.  
 • Filter Media-Pak available for the removal of hydrocarbons, metals, sand, silt, and litter.  
 • Disposable Media-Pak is constructed from durable geotextile polypropylene fabric.  
 • Optional StormWeb™, polypropylene system designed to assist in the removal of trash and debris, in compliance with TMDL requirements.  
 • Media-Pak may be removed through the curb opening for ease of maintenance.  
 • Media is non-hazardous, per EPA and OSHA standards.  
 • Patented design with high nominal flow and high overflow capacities.  
 • Easy to install in new and existing curb inlets.  
 • Meets Best Available Technology for use in Stormwater Best Management Practices (BMP).  
 • Maintenance contracts, including recycling of all spent absorbents are available through REM Service Department.  
 • Servicing of filters on a regular basis is a requirement to meet most local and state BMPs.

**TRITON CURB INLET FILTER INSERT**  
 REM has developed the TRITON CURB Inlet Filter Insert to help eliminate hydrocarbons and other contaminants such as metals, sand, silt and litter from stormwater runoff.  
 The TRITON Curb Inlet is designed to be inserted below the street/curb opening of storm drain inlets.  
 Patent Pending

**REVEL Environmental Manufacturing, Inc.**  
 888-526-4736

**TRITON FILTER™ CATCH BASIN INSERT**



**STANDARD DIMENSIONS (IN INCHES)**

MODEL	A	B	C	D	E	F	G	H
TR1212	12	12	12	12	12	12	12	12
TR1218	12	18	12	12	12	12	12	12
TR1812	18	12	12	12	12	12	12	12
TR1818	18	18	12	12	12	12	12	12
TR2412	24	12	12	12	12	12	12	12
TR2418	24	18	12	12	12	12	12	12
TR2424	24	24	12	12	12	12	12	12
TR3012	30	12	12	12	12	12	12	12
TR3018	30	18	12	12	12	12	12	12
TR3024	30	24	12	12	12	12	12	12
TR3612	36	12	12	12	12	12	12	12
TR3618	36	18	12	12	12	12	12	12
TR3624	36	24	12	12	12	12	12	12
TR4212	42	12	12	12	12	12	12	12
TR4218	42	18	12	12	12	12	12	12
TR4224	42	24	12	12	12	12	12	12
TR4812	48	12	12	12	12	12	12	12
TR4818	48	18	12	12	12	12	12	12
TR4824	48	24	12	12	12	12	12	12
TR6012	60	12	12	12	12	12	12	12
TR6018	60	18	12	12	12	12	12	12
TR6024	60	24	12	12	12	12	12	12

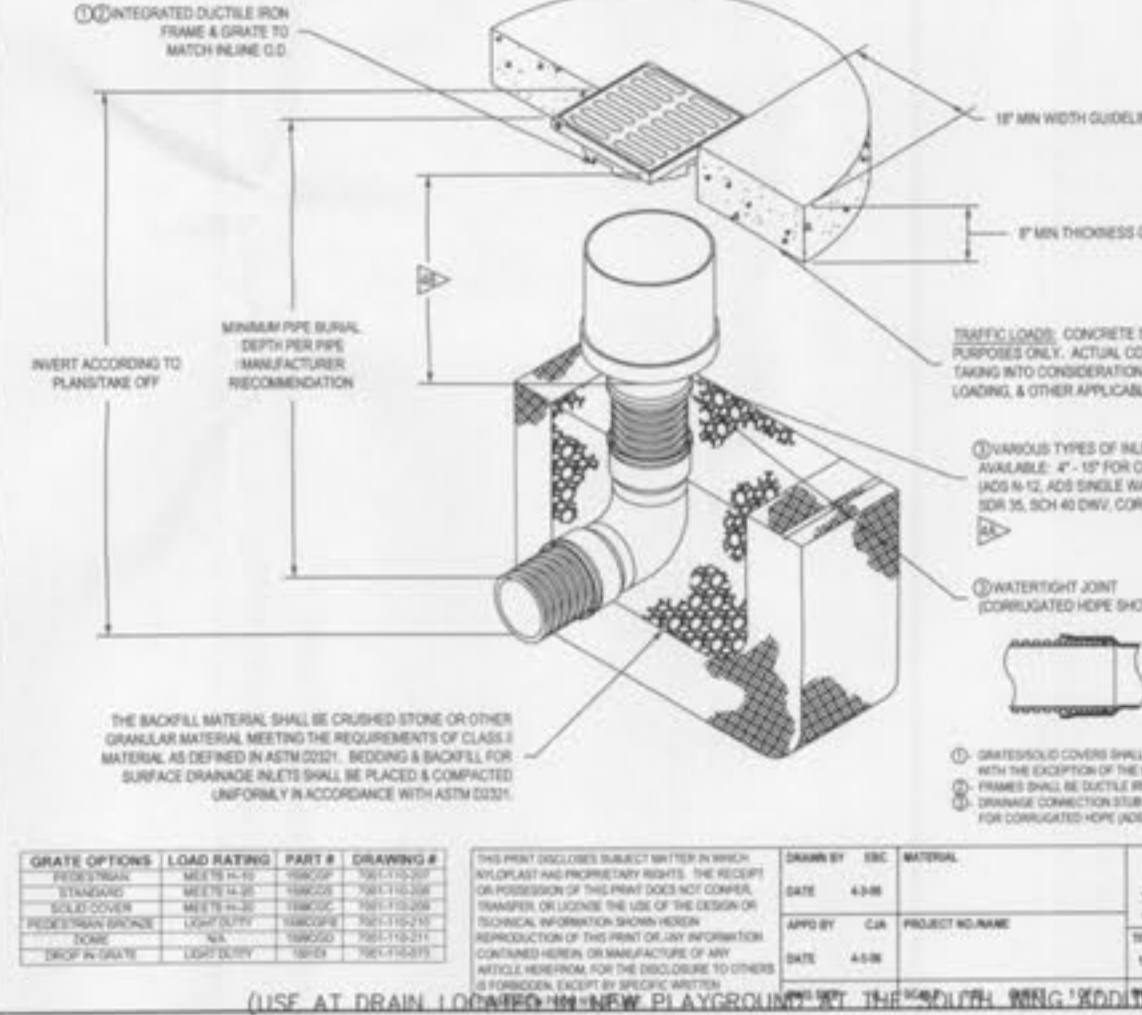
**NOTES:**  
 1. All dimensions are in inches.  
 2. Units are constructed from High Density Polyethylene Plastic with UV inhibitors.  
 3. Media Cartridges can be interchanged with Geo-Trap series as site conditions change.  
 4. Low profile filters are also available for shallow catch basins.  
 5. Custom sizes are available to fit most applications. Please call a distributor near you for details.  
 6. Optional TDG series Trash & Debris Guard also available.  
 7. Dual stage and dual capacity filters also available.  
 \* Note: Dimension "C" is filter depth. Dimension "A" and "B" can be adjusted to suit varying sizes of catch basins.

**Revel Environmental Manufacturing Inc.**  
 888-526-4736  
 360-B Denver Avenue, Fullerton, California 92632  
 2110 South Grand Avenue, Santa Ana, California 92705  
 P: (714) 676-4736 F: (714) 557-2879

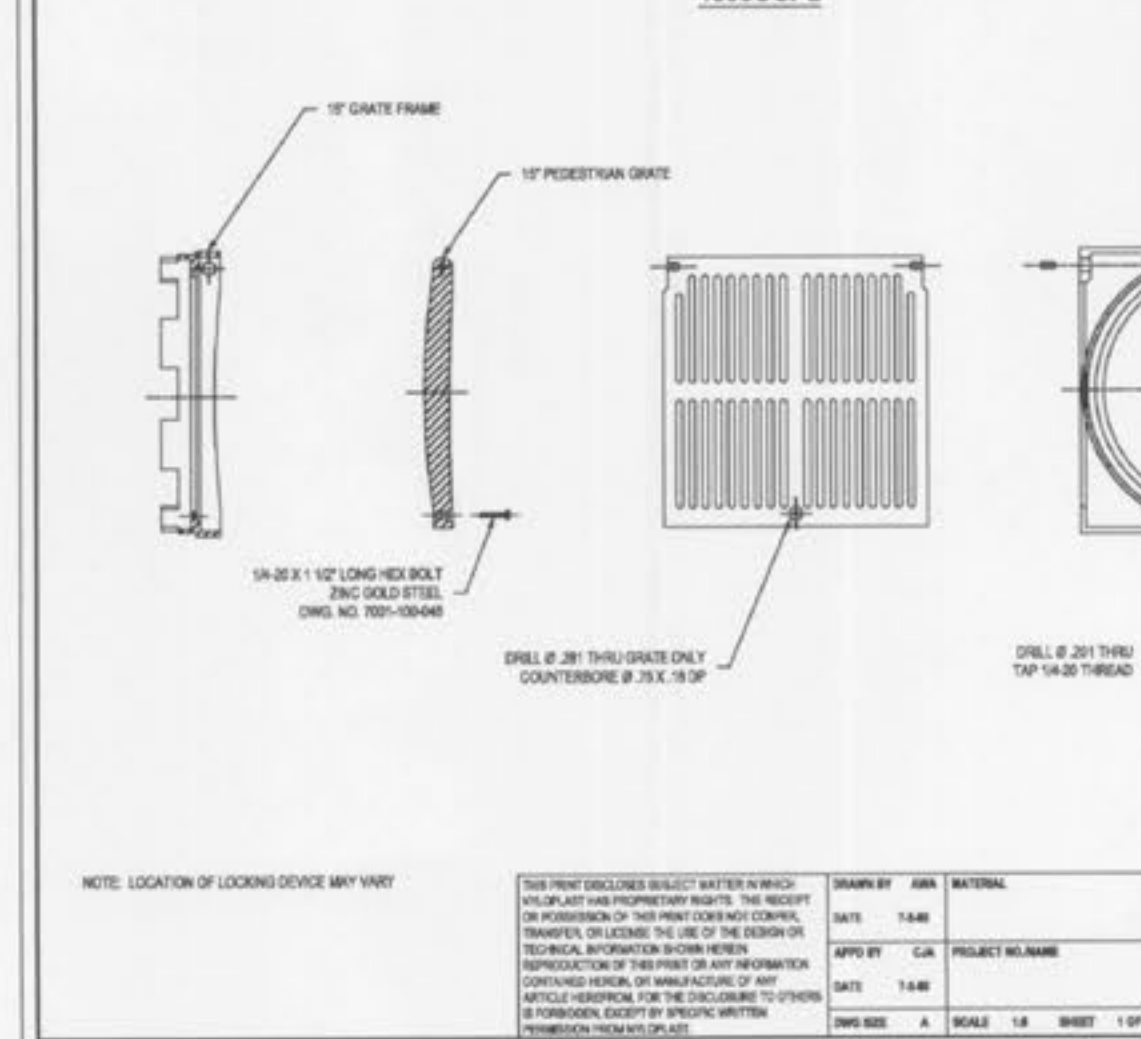
**Maintenance**

The Triton catch basin inserts should be inspected at regular intervals and maintained when necessary to ensure optimum performance.  
 The useful life of the media-pak is based on the quantity of pollutants it collects. The media-pak with XSORB media has the ability to absorb up to 500 percent of its own weight in oil when fully saturated. A typical TR2-GR cartridge has the ability to absorb between 1 and 2 quarts of contaminants when fully saturated. On average we suggest three cleanouts of the cartridge basin and one change out or replacement of the media-pak per year. For Triton catch basin inserts placed in areas of greater pollutant loading the maintenance and change out frequency will be increased.  
 Life expectancy of the Triton catch basin inserts is anticipated to be excellent because of the materials of construction. The non-reactive high density polyethylene plastic with UV inhibitors and fiberglass housings provide excellent protection against damp and corrosive environments. The cartridge components including the stainless steel wire cage, geotextile polypropylene fabric are all considered durable and have good longevity in the environment.  
**On-site Procedures for Inspection and Maintenance**  
 • Secure traffic and pedestrian traffic with cones, barrels, etc.  
 • Clean surface area immediate around each catch basin  
 • Remove grates and set aside  
 • Clean grates, remove silt and debris that may be trapped within the grate  
 • Inspect perimeter gasket system of the cartridge making sure no flows are bypassing the cartridge, repair as needed.  
 • Remove by vendor hose the debris that has been trapped in the trough areas. Dispose of in accordance with local, state and federal regulatory agency requirements. Most debris that is captured in the trough or sump area will fall into the non-hazardous waste category.  
 • Visually inspect and check the condition of the trough area.  
 • Inspect the media-pak condition in the wire mesh cartridge. When the normally white colored media turns black, the media should be changed. When service requires replacement of the cartridge media-pak please contact your local CONTECH Stormwater Solutions office.  
 • Reinstall grate and lockdown as required.  
 • Secure and disassemble weatherproof lock out tags.  
 • Report any concerns or improvements regarding the Triton insert to a service report.  
 • Un-secure traffic control area.  
 • Complete service report and submit to facility owner.

**NYLOPLAST 15" INLINE DRAIN: 2715AG \_ X**



**1599CGPL**



USE OR EQUIVALENT SUCH AS FLEXSTORM INLET FILTERS AS DISTRIBUTED BY ADVANCE DRAINAGE SYSTEMS

**PROJECT TITLE:**  
 CROSSROADS ELEMENTARY SCHOOL

**ENGINEERING PLANNING SURVEYING**  
 221 Point West Blvd.  
 St. Charles, MO 63301  
 636-628-5552  
 FAX 636-628-1718

**DISCLAIMER OF RESPONSIBILITY:**  
 I hereby certify that the documents prepared by me are limited to this sheet, and I hereby disclaim any responsibility for all other drawings, specifications, estimates, reports or other documents or instruments relating to or intended to be used for any part or parts of the architectural or engineering project or survey.

**REFERENCE DETAIL SHEET.**  
 CONTRACTOR TO VERIFY DETAILS WITH MANUFACTURER.

**CLIFFORD L. HEITMANN**  
 CIVIL ENGINEER  
 029817  
 Copyright 2011  
 Box Engineering Company, Inc.  
 Authority No. 000655  
 All Rights Reserved

**REVISITONS**

NO.	DATE	DESCRIPTION
7-22-11	BID SET	
8-10-11	ADDENDUM #1	
8-12-11	ADDENDUM #2	
8-15-11	ADDENDUM #3	
8-22-11	CITY COMMENTS	

**Developer / Owner:**  
 WENTZVILLE R-V SCHOOL DISTRICT  
 ONE CAMPUS DRIVE  
 WENTZVILLE, MISSOURI/63385  
 636-327-3800

**P+Z No.** 9831.11.04  
**City No.** MAY 5, 2011  
 #

**Page No.** 9 of 10