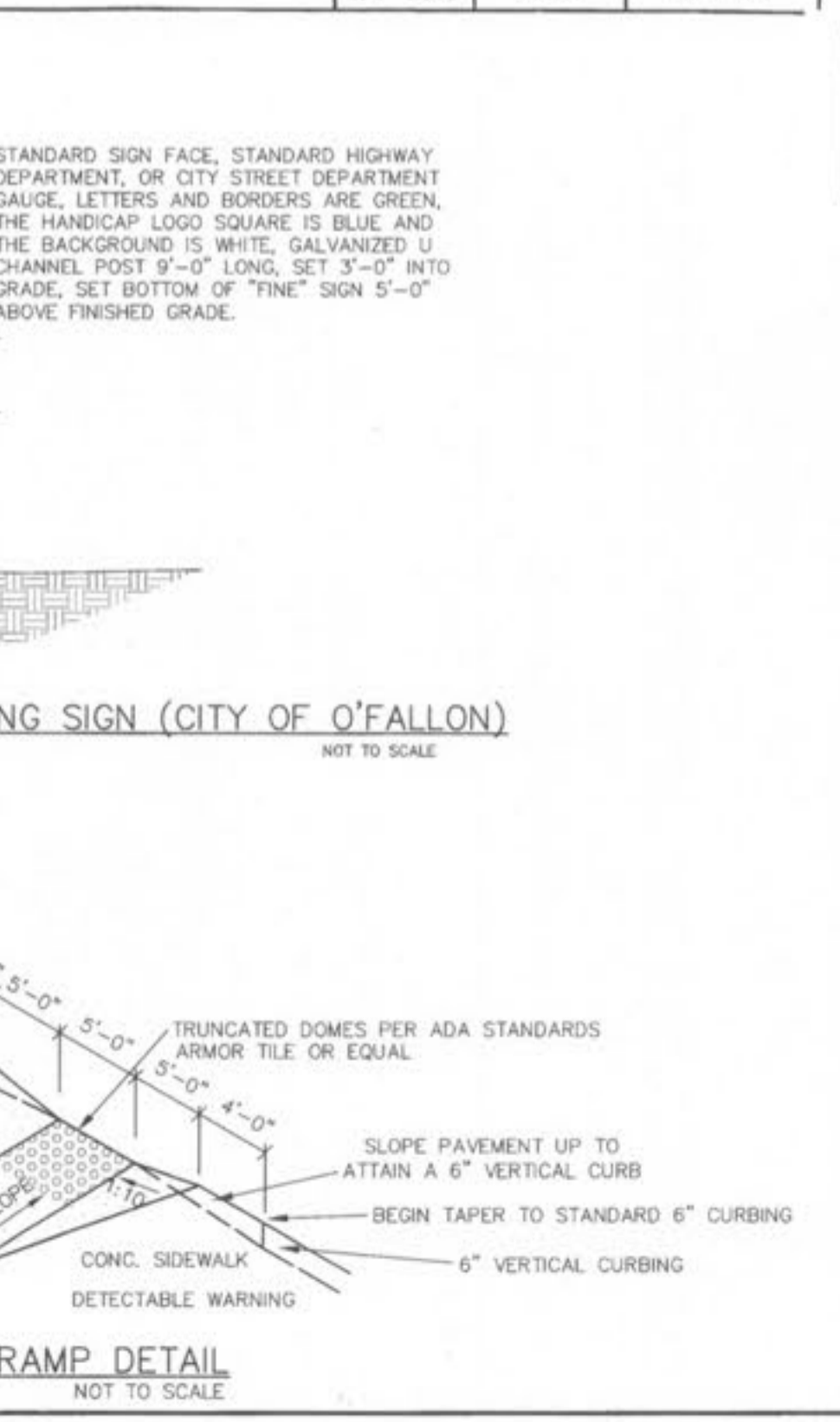
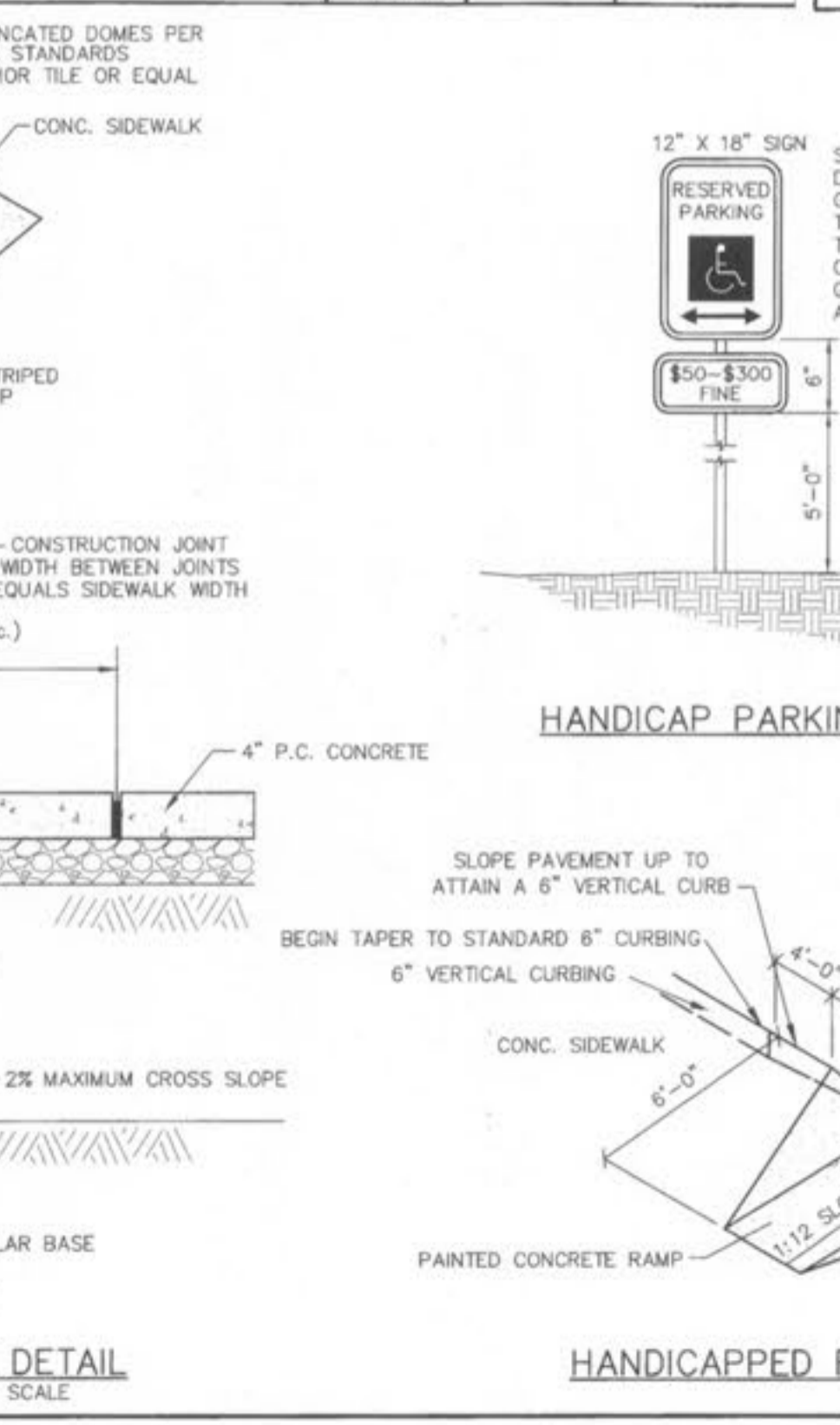
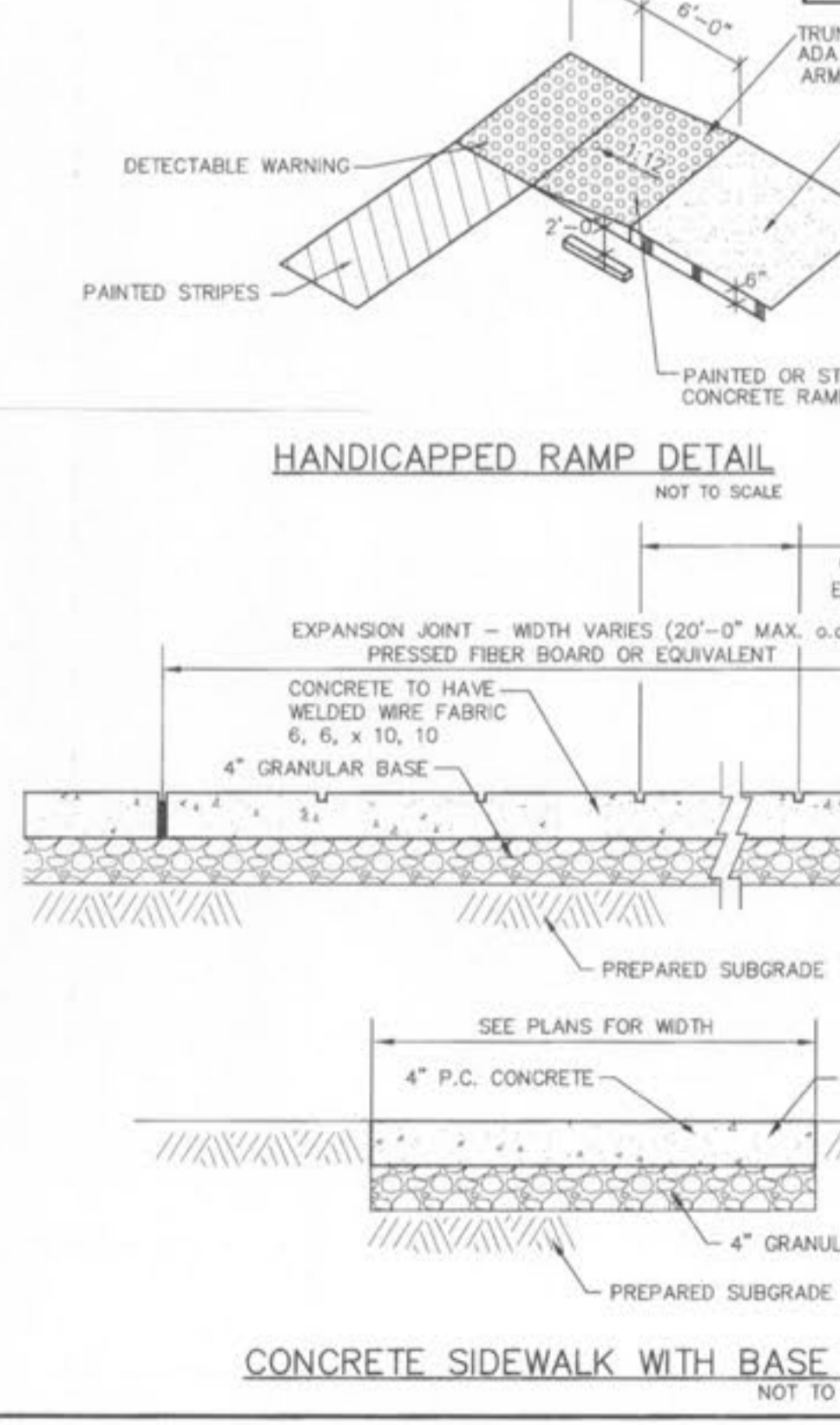
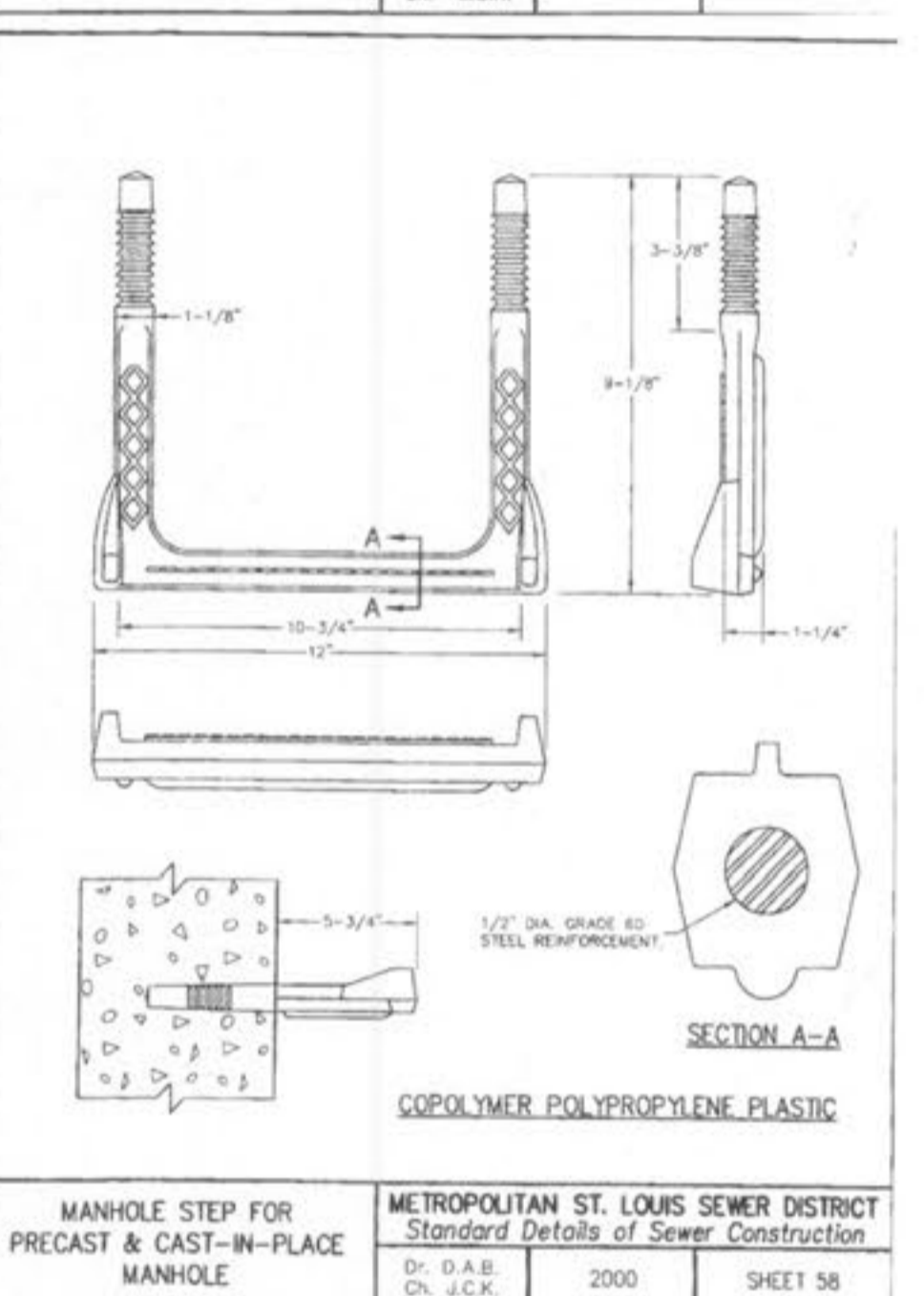
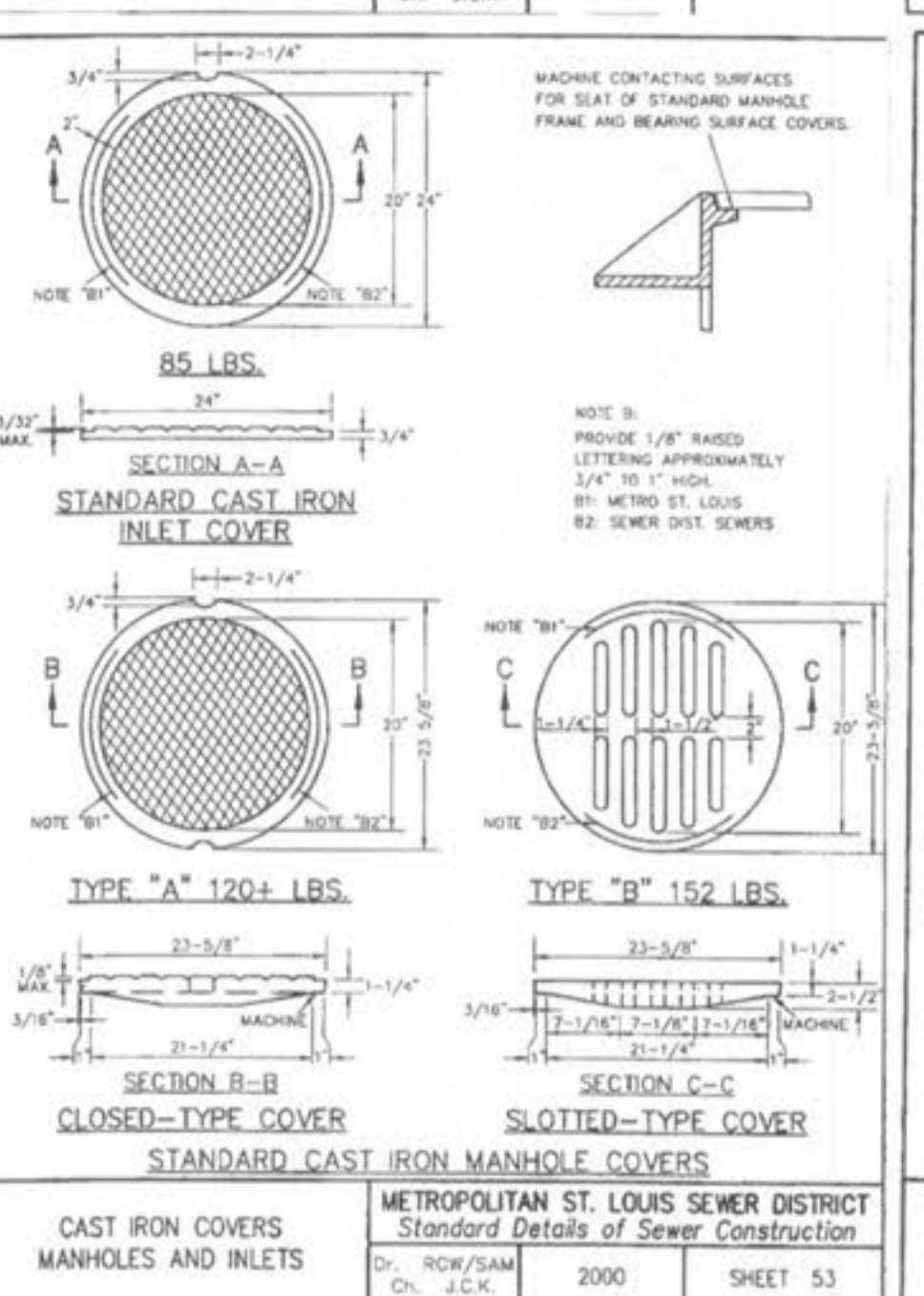
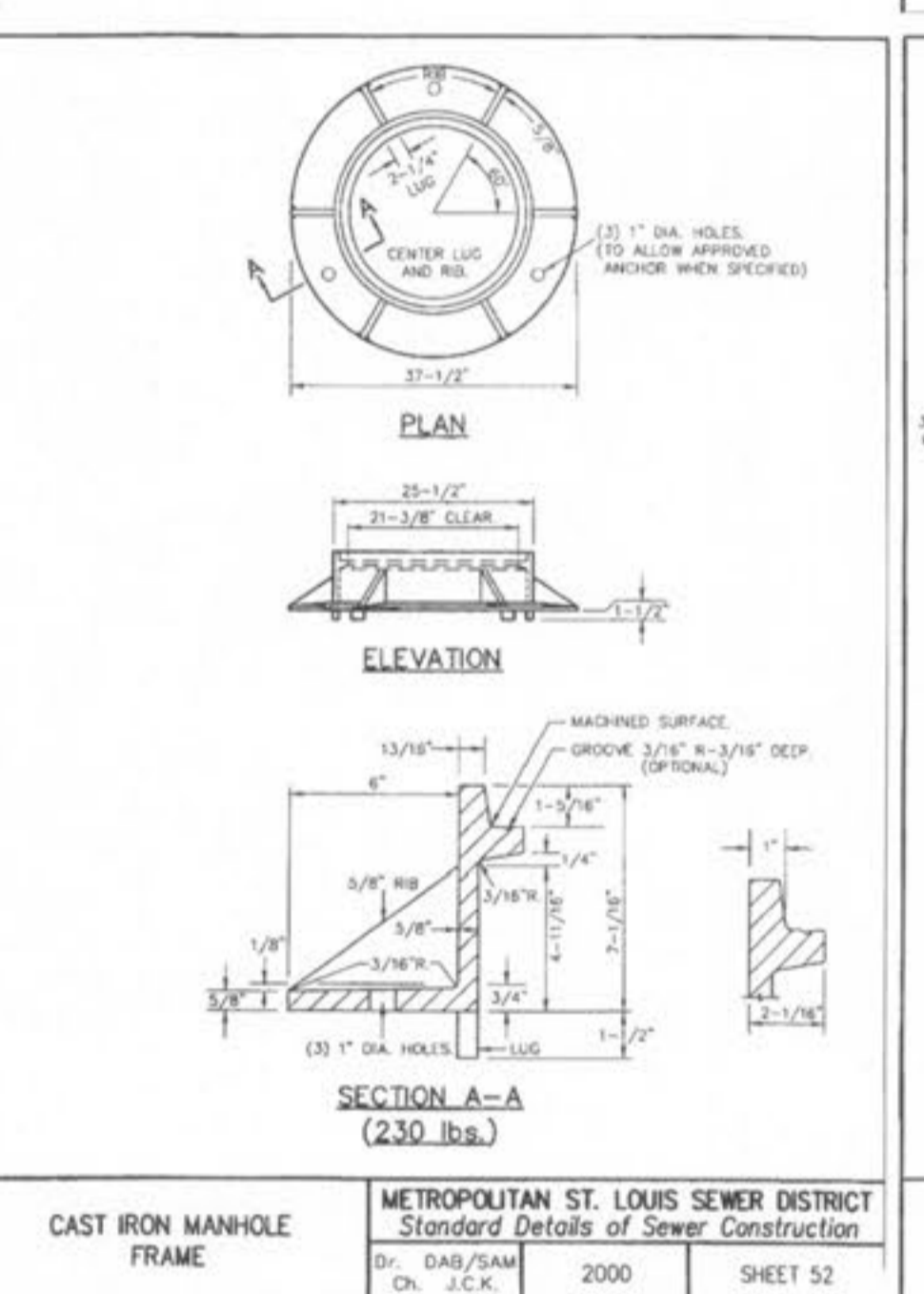
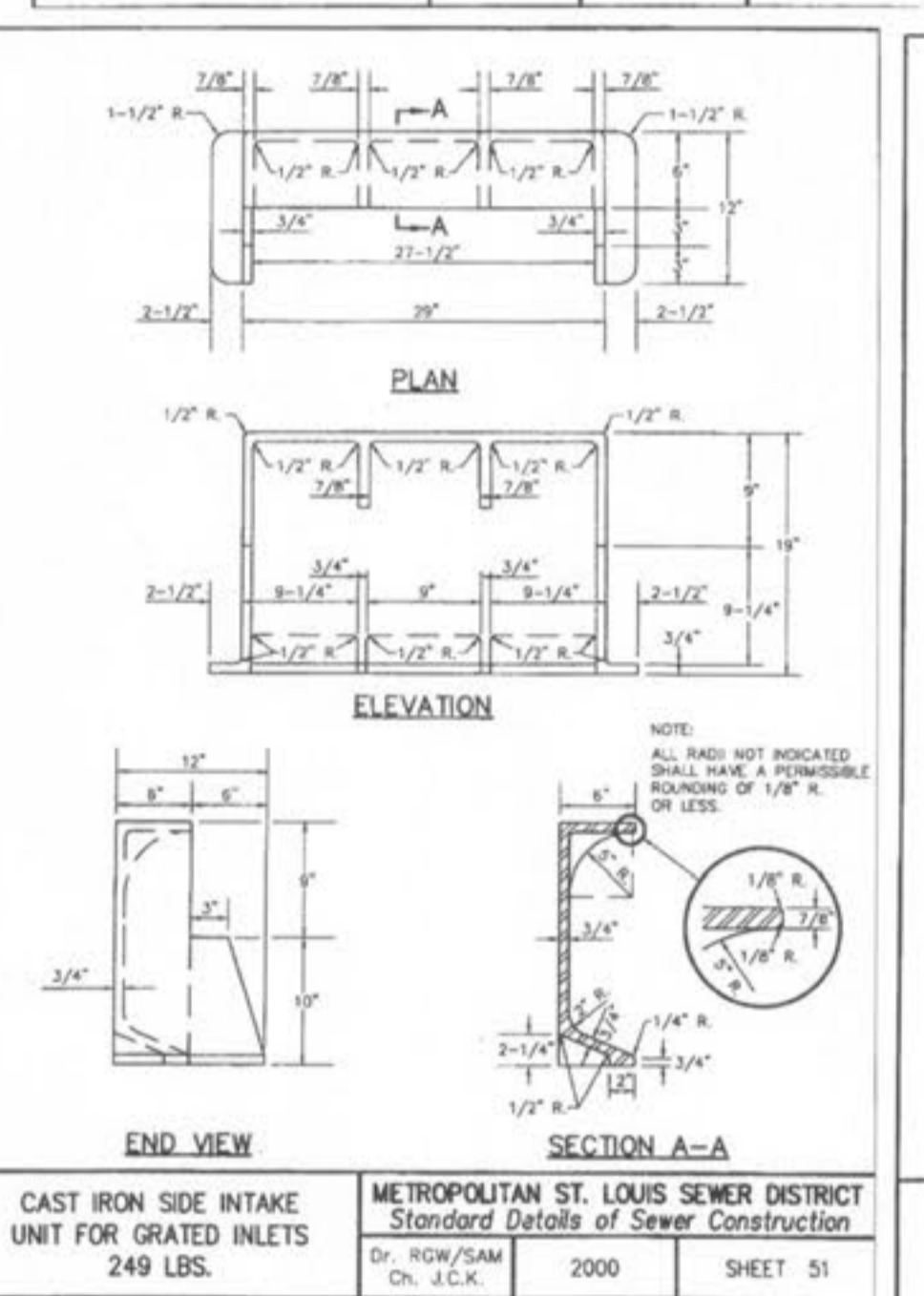
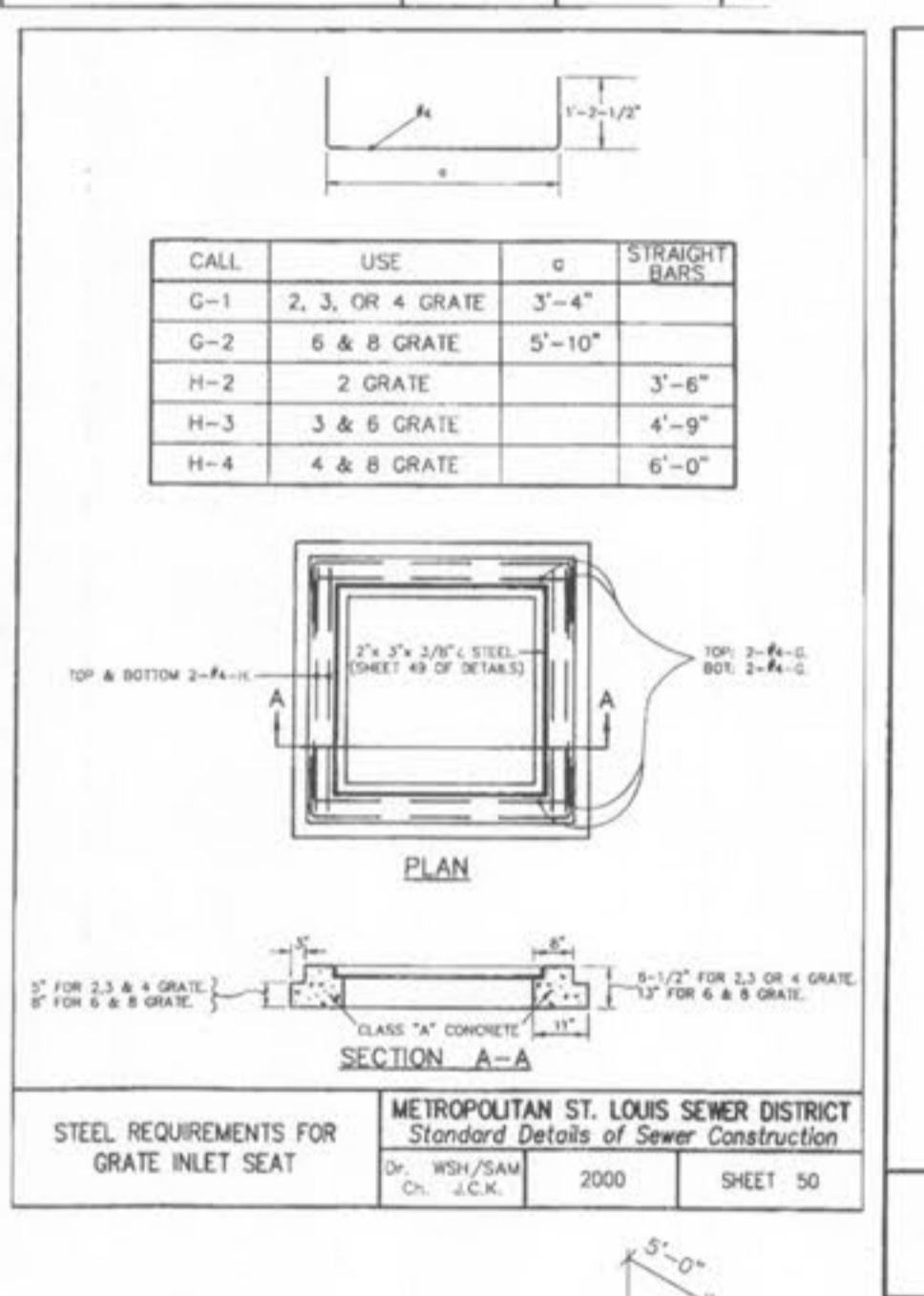
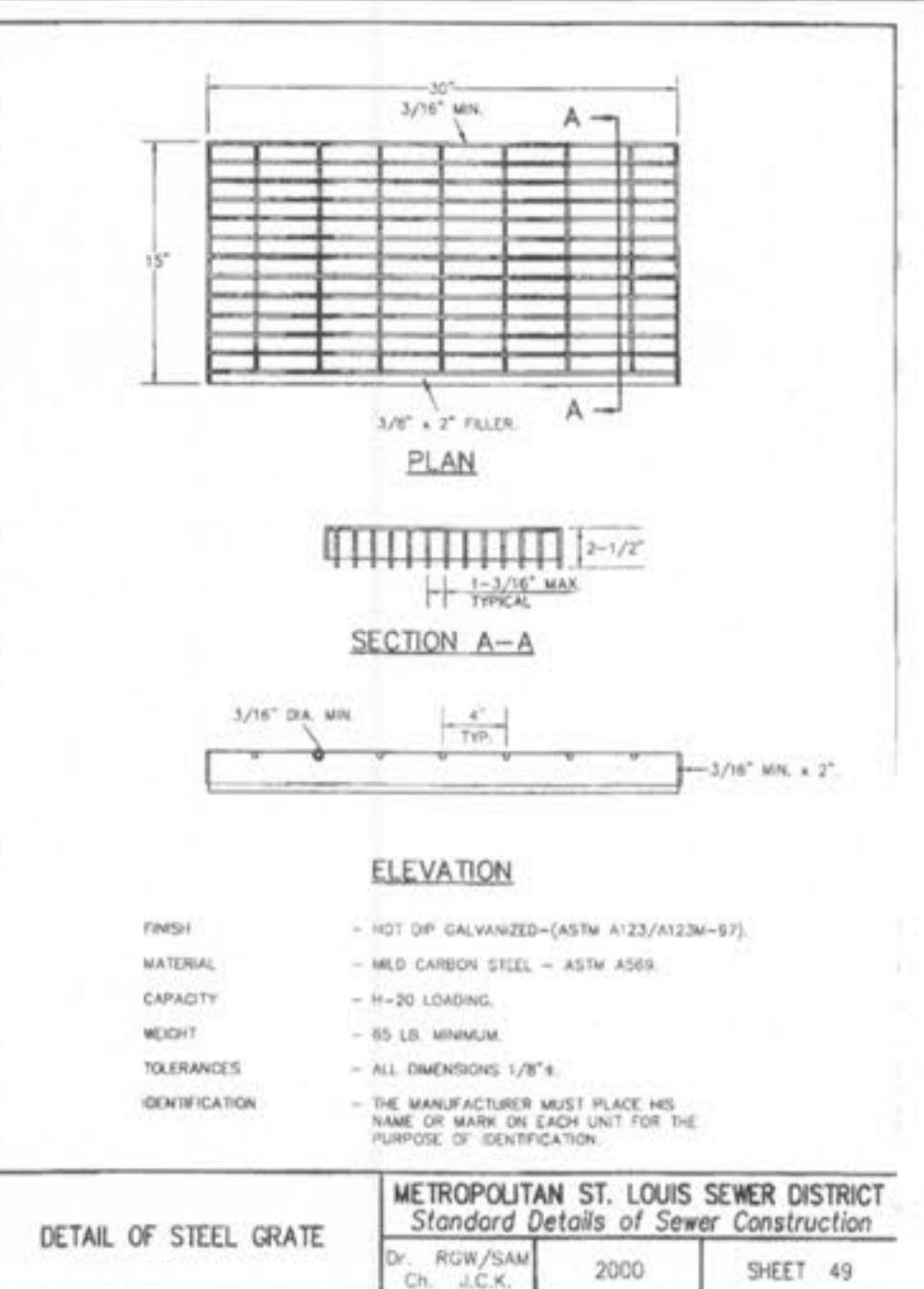
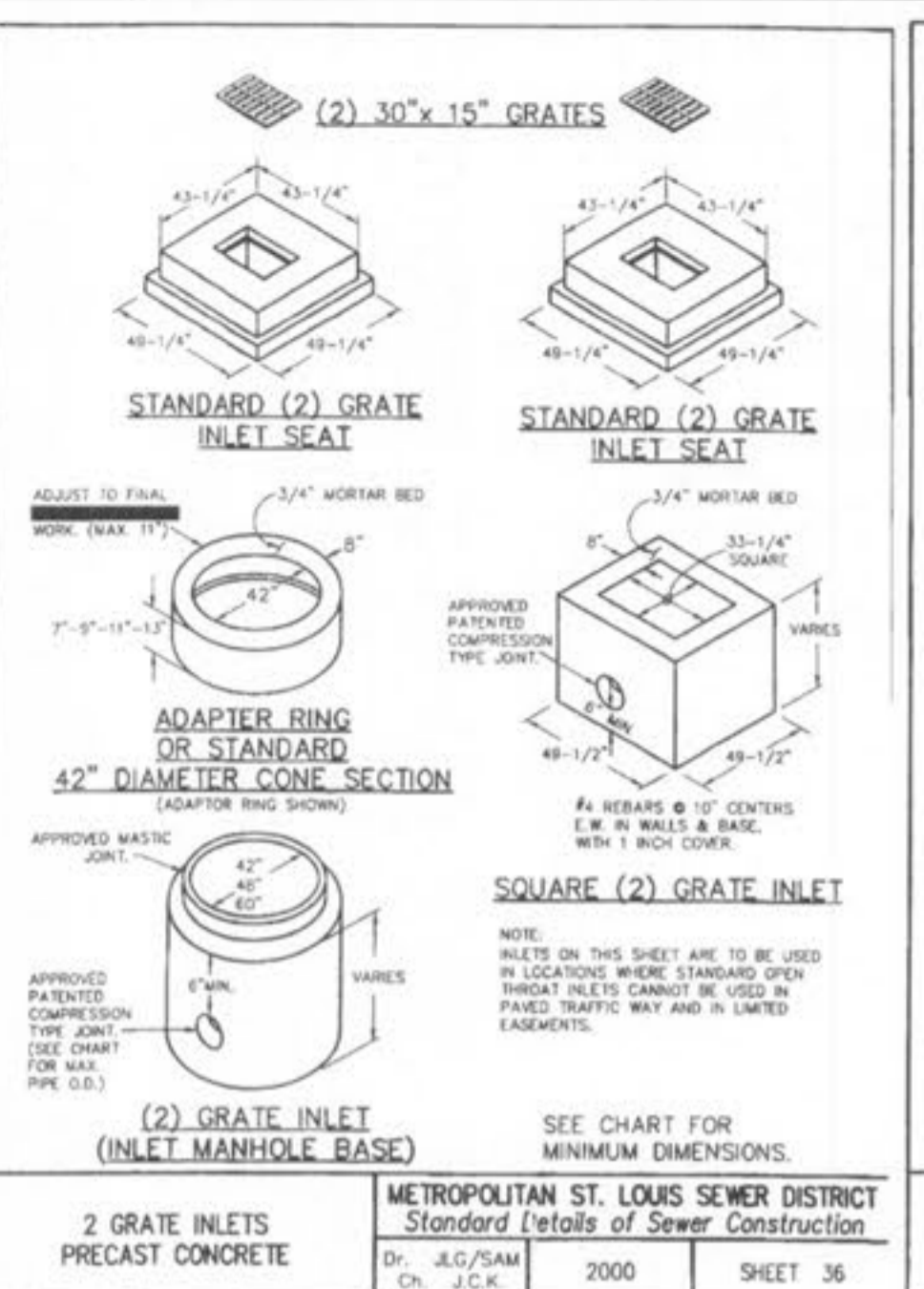
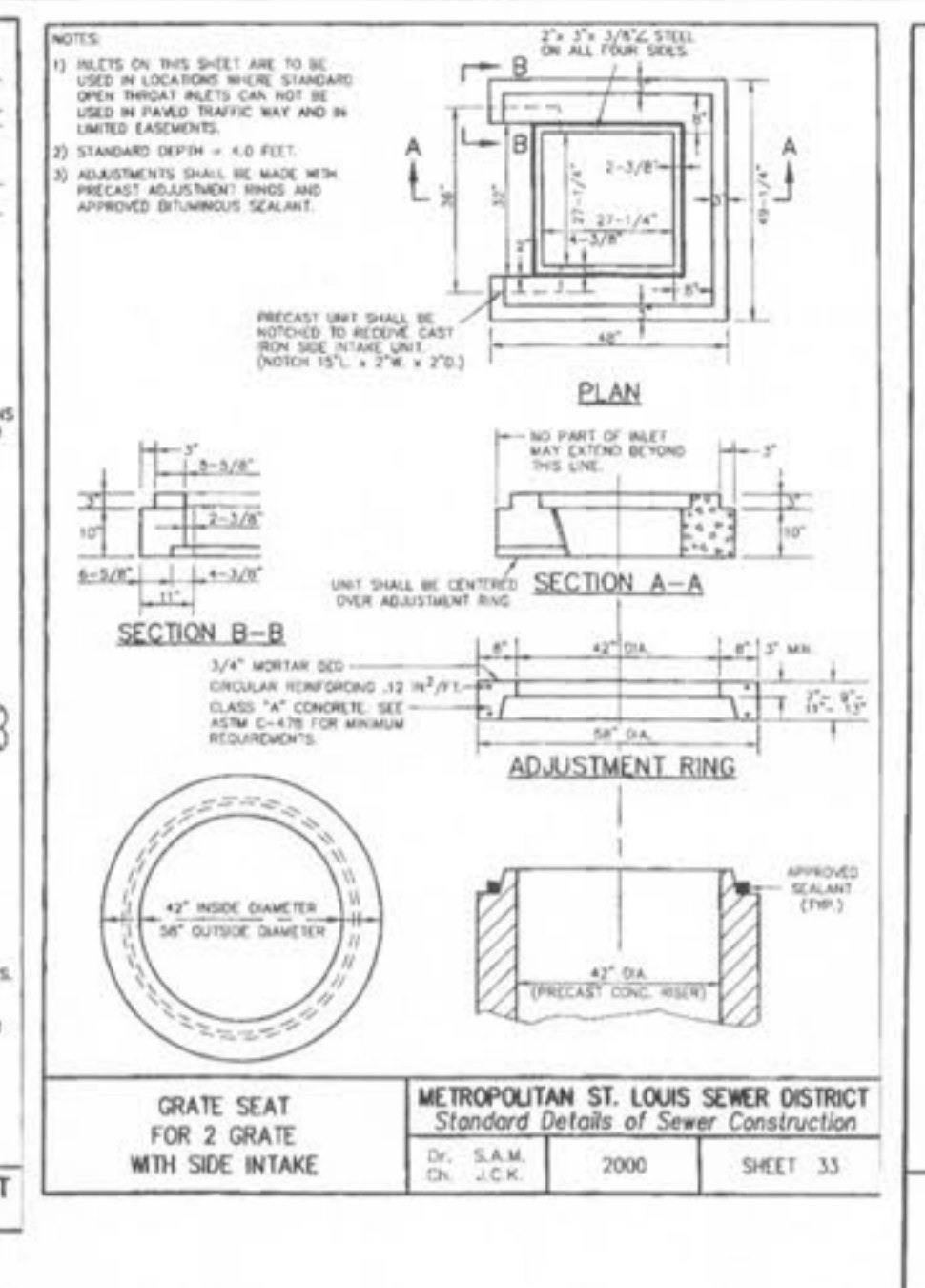
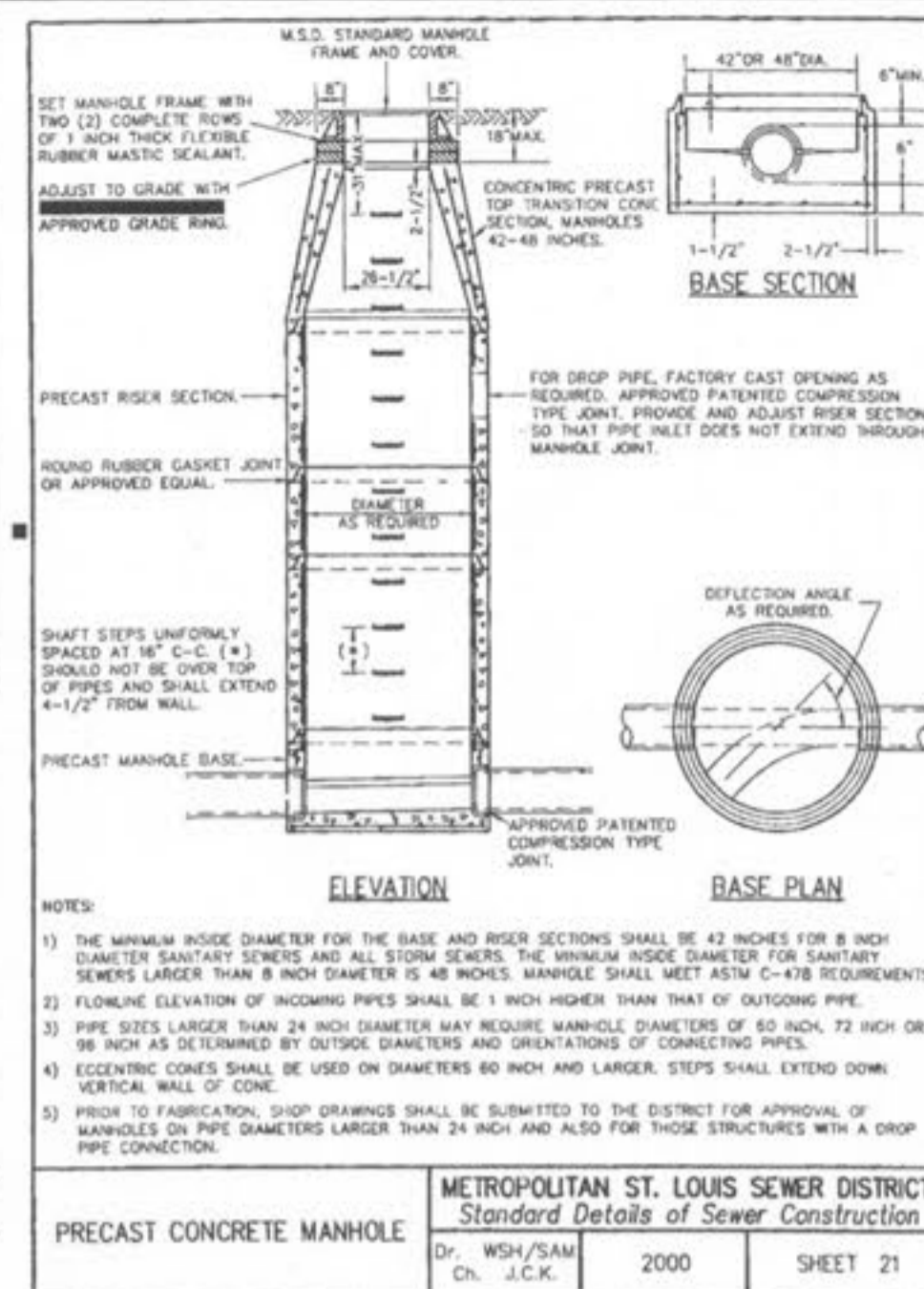
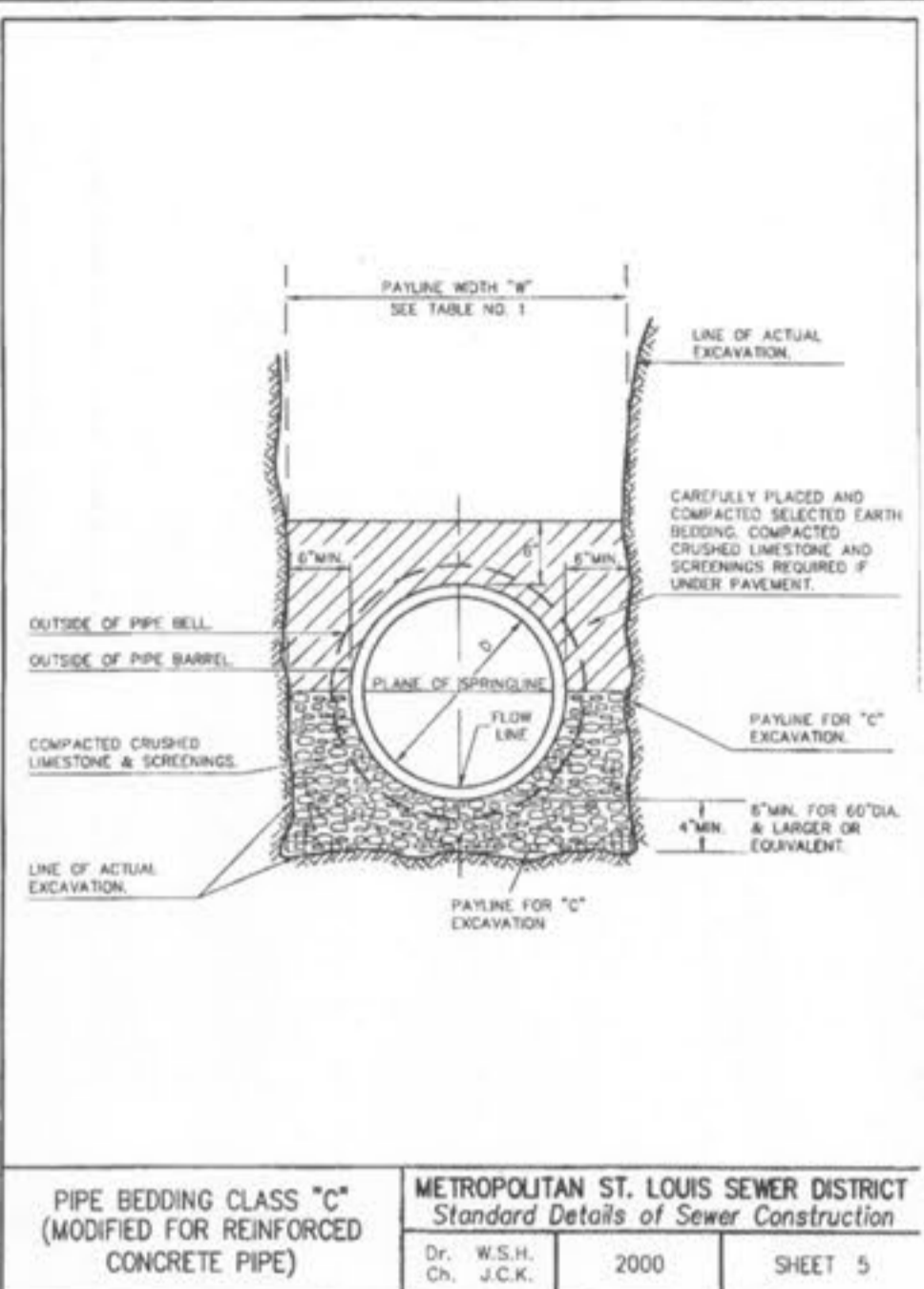
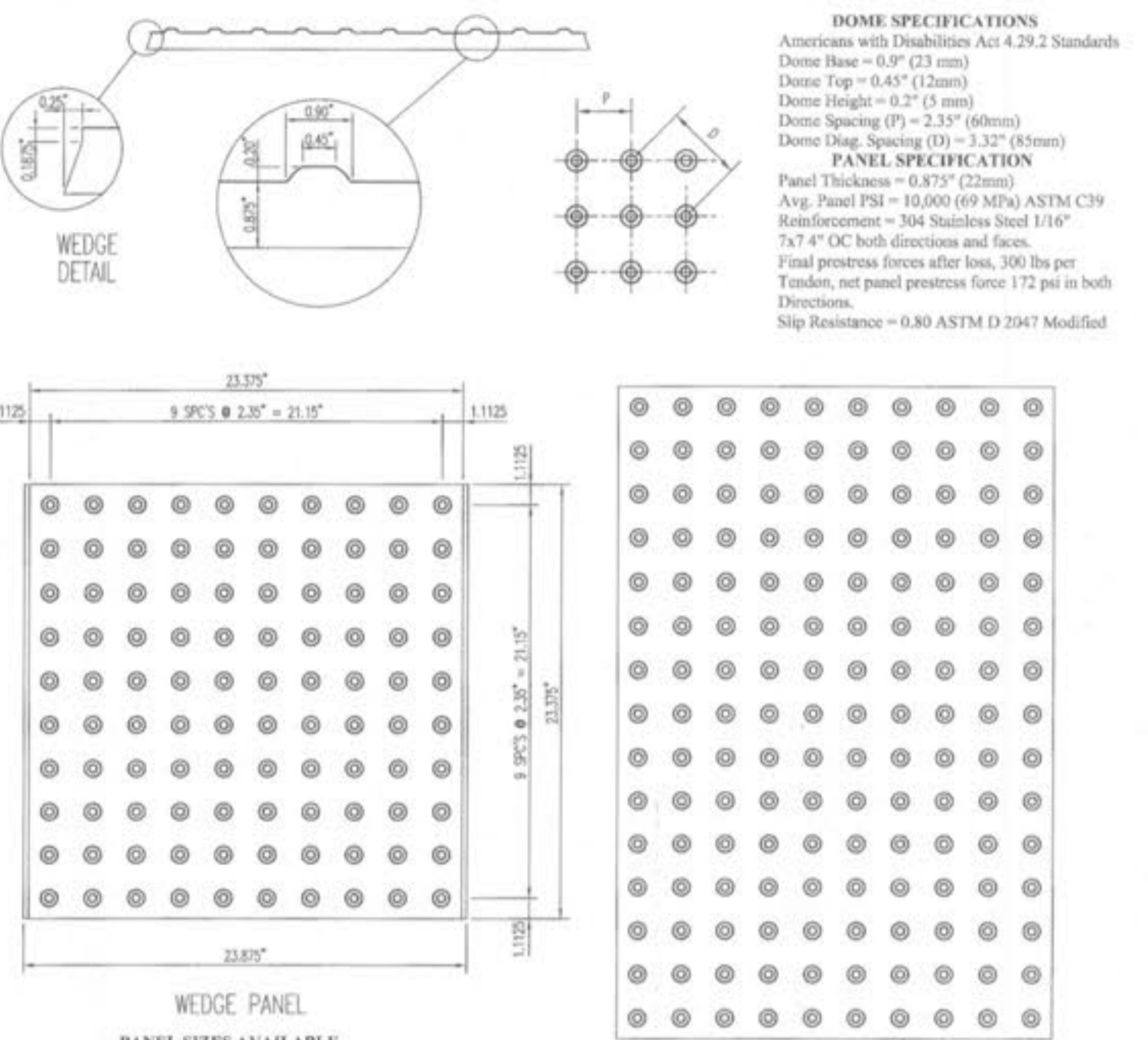


4/03/09 REVISIONS PER CLIENT
 4/08/09 BID SET ISSUED
 4/16/09 CITY COMMENTS
 5/4/09 CITY COMMENTS
 5/22/09 CITY COMMENTS

CASTWACT™ Warning Panels are the latest innovation in detectable warning systems. A long term solution meeting both state and federal guidelines for handicap detection. CASTWACT™ Warning Panels are designed for exterior use at the bottom of curb ramps and other locations such as depressed curbs, raised crosswalks and raised intersections, borders of median and islands, at the edge of transit platforms and where railroad tracks cross the sidewalk, to warn people with visual impairments of potential hazards. Detectable warnings must be installed across the full width of ramps, and 24" minimum in length up the ramp. CASTWACT™ Warning Panels are integrally colored to provide visual contrast with the adjacent walking surface.

CASTWACT™ are cementitious based concrete panels with the same coefficient of expansion as the concrete base. 7/8" thick high strength concrete reinforced with stainless steel prestress strands resulting in a high strength and crack resistant panel. Abrasion resistant translucent domes are achieved with an engineered mix design of granite and quartz aggregate that produces an average compressive strength of 10,000 psi (69 MPa). CASTWACT™ are quality controlled manufactured to produce a dense, freeze/thaw durable panel. Architectural concrete finished for safe wet and dry slip resistance. Concrete surfaces are easily maintained and cleaned with pressure washing.

DOMES SPECIFICATIONS
 Americans with Disabilities Act 4.29.2 Standards
 Dome Base = 0.9" (23 mm)
 Dome Top = 0.45" (12mm)
 Dome Height = 0.2" (5 mm)
 Dome Spacing (P) = 2.35" (60mm)
 Dome Dia. Spacing (D) = 3.32" (85mm)
PANEL SPECIFICATION
 Panel Thickness = 0.875" (22mm)
 Avg. Panel PSI = 10,000 (69 MPa) ASTM C19
 Reinforcement = 304 Stainless Steel 1/16"
 7 x 7" OC both directions and faces
 Final prestress force after loss, 300 lbs per
 tendon, net panel prestress force 172 psi in both
 directions.
 Slip Resistance = 0.80 ASTM D 2047 Modified



TRITON FILTER™ CATCH BASIN INSERT

THE TRITON FILTER
 Product Specification

- Non-reactive High Density Polyethylene (HDPE) plastic construction with UV stabilizers.
- Round, Square, Rectangular, Low Profile and Curved models.
- Dual Stage and Dual Capacity Filters are also available.
- Quick and easy servicing made available by replaceable Media-Pak.
- Filter Media-Pak available for the removal of hydrocarbons, metals, sand, silt, and dirt.
- Disposable Filter Media-Pak is recommended for hazardous, petroleum, and other fluids.
- Media-Pak can be interchanged with Geo-Trap series as site conditions change.
- Media is non-toxic, per EPA and OSHA standards.
- Patented design with high resistant flow and high overflow capacities.
- Easy to install in new and existing catch basins.
- More Res Available Technology (BAT) for use in Stormwater Best Management Practices (BMP).
- Maintenance contracts, including recycling of all spent absorbents are available.
- Servicing of filters in a regular basis is a requirement to meet water local and state BMP's.

RECYCLING DUMPSTER PAD DETAIL
 NOT TO SCALE

TRITON FILTER™ CATCH BASIN FILTER INSERT

THE TRITON FILTER
 Product Specification

- Non-reactive High Density Polyethylene (HDPE) plastic construction with UV stabilizers.
- Round, Square, Rectangular, Low Profile and Curved models.
- Dual Stage and Dual Capacity Filters are also available.
- Quick and easy servicing made available by replaceable Media-Pak.
- Filter Media-Pak available for the removal of hydrocarbons, metals, sand, silt, and dirt.
- Disposable Filter Media-Pak is recommended for hazardous, petroleum, and other fluids.
- Media-Pak can be interchanged with Geo-Trap series as site conditions change.
- Media is non-toxic, per EPA and OSHA standards.
- Patented design with high resistant flow and high overflow capacities.
- Easy to install in new and existing catch basins.
- More Res Available Technology (BAT) for use in Stormwater Best Management Practices (BMP).
- Maintenance contracts, including recycling of all spent absorbents are available.
- Servicing of filters in a regular basis is a requirement to meet water local and state BMP's.

RECYCLING DUMPSTER PAD DETAIL
 NOT TO SCALE

ASPHALT PAVEMENT DETAIL
 NOT TO SCALE

RECYCLING DUMPSTER PAD DETAIL
 NOT TO SCALE

CONCRETE CURB & SIDEWALK DETAIL
 NOT TO SCALE

RECYCLING DUMPSTER PAD DETAIL
 NOT TO SCALE

CLIFFORD L. HEITMANN
 NUMBER E-29817
 Signature
 Printed CLIFFORD L. HEITMANN
 Date 5-22-09
 License No. 2202817
 Authority No. 000655
 Copyright 2009
 Box Engineering Company, Inc.
 All Rights Reserved