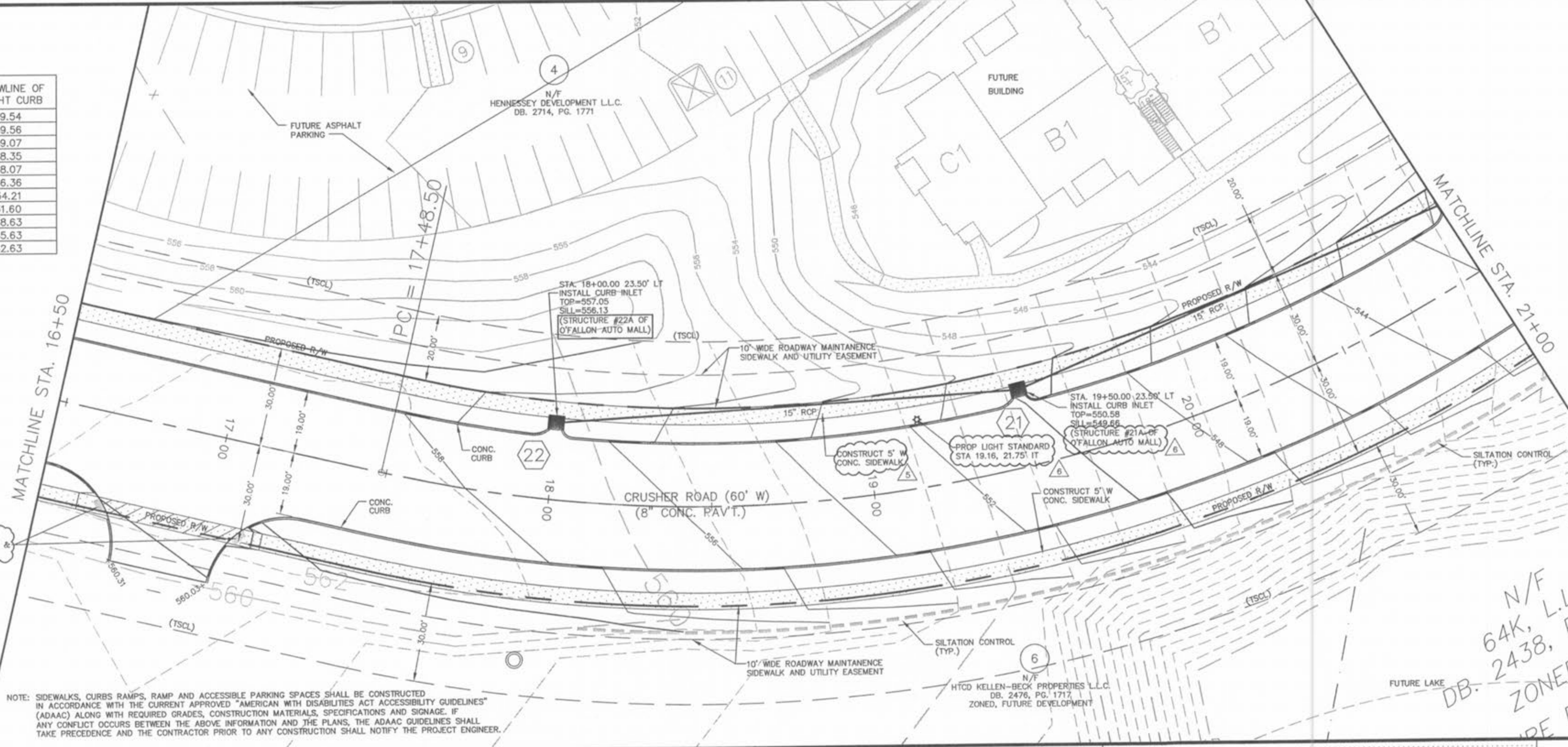
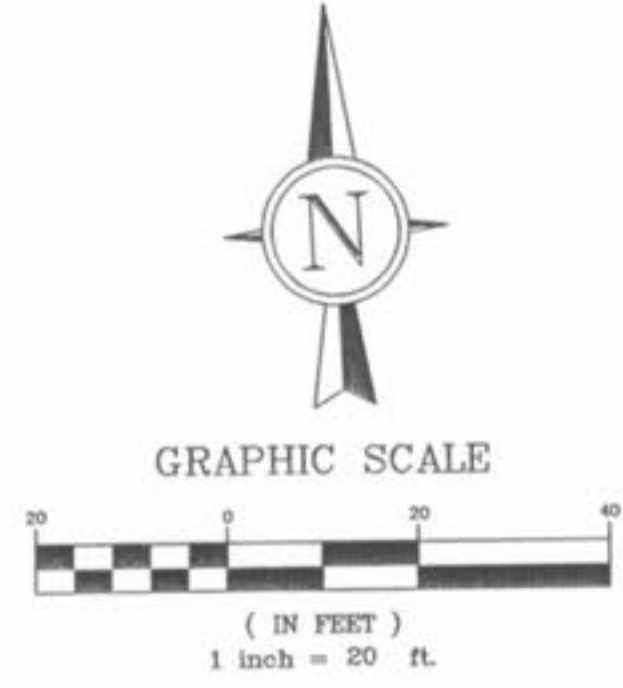
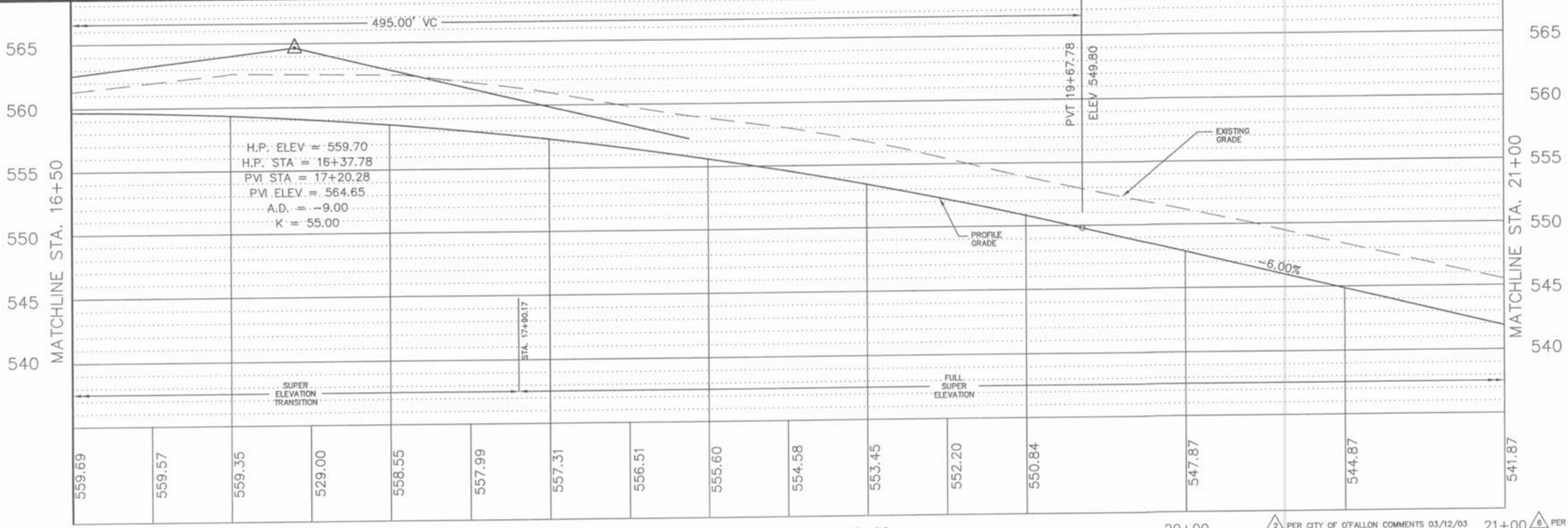


STATION	CENTERLINE ELEVATION	FLOWLINE OF LEFT CURB	FLOWLINE OF RIGHT CURB
16+50	559.69	559.31	559.54
17+00	559.35	558.97	559.56
17+50	558.55	558.04	559.07
17+90.17	557.59	556.83	558.35
18+00	557.31	556.55	558.07
18+50	555.60	554.84	556.36
19+00	553.45	552.69	554.21
19+50	550.84	550.08	551.60
20+00	547.87	547.11	548.63
20+50	544.87	544.11	545.63
21+00	541.87	541.11	542.63



NOTE: SIDEWALKS, CURBS RAMPS, RAMP AND ACCESSIBLE PARKING SPACES SHALL BE CONSTRUCTED IN ACCORDANCE WITH THE CURRENT APPROVED "AMERICAN WITH DISABILITIES ACT ACCESSIBILITY GUIDELINES" (ADAAG) ALONG WITH REQUIRED GRADES, CONSTRUCTION MATERIALS, SPECIFICATIONS AND SIGNAGE. IF ANY CONFLICT OCCURS BETWEEN THE ABOVE INFORMATION AND THE PLANS, THE ADAAG GUIDELINES SHALL TAKE PRECEDENCE AND THE CONTRACTOR PRIOR TO ANY CONSTRUCTION SHALL NOTIFY THE PROJECT ENGINEER.

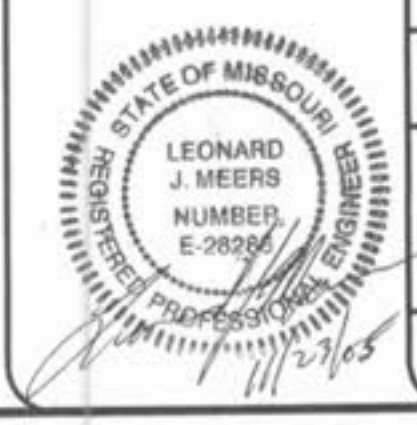


TO BE CONSTRUCTED WITH O'FALLON AUTO MALL

- △ PER CITY OF O'FALLON COMMENTS 03/12/03
- △ PER CITY OF O'FALLON COMMENTS 06/27/02
- △ PER CITY OF O'FALLON COMMENTS 11/22/05
- △ PER CITY OF O'FALLON COMMENTS 09/28/05

PREPARED FOR:  
HENNESSEY DEVELOPMENT  
9904 CLAYTON RD.  
SUITE 122  
ST. LOUIS, MO. 63124  
PH. (314) 991-1248  
FAX (314) 991-0964

CITY OF O'FALLON FILE NO.  
31.01.01



**CRUSHER ROAD**  
**PLAN & PROFILE SHEET**

**J. R. GRIMES**  
**CONSULTING ENGINEERS, INC.**

12300 OLD TESSON ROAD  
SUITE 3000  
ST. LOUIS, MO. 63128  
PH. (314) 849-6100  
FAX (314) 849-6010

DRAWN BY: JLW	DATE: 11/07/01	CHECKED BY: JRG	DATE: 11/07/01	JOB NUMBER: 675E	SHEET: C6
---------------	----------------	-----------------	----------------	------------------	-----------

3:0675E PLANS C06-PP.dwg, PLOT, 11/22/2005 5:01:38 PM, jrbk