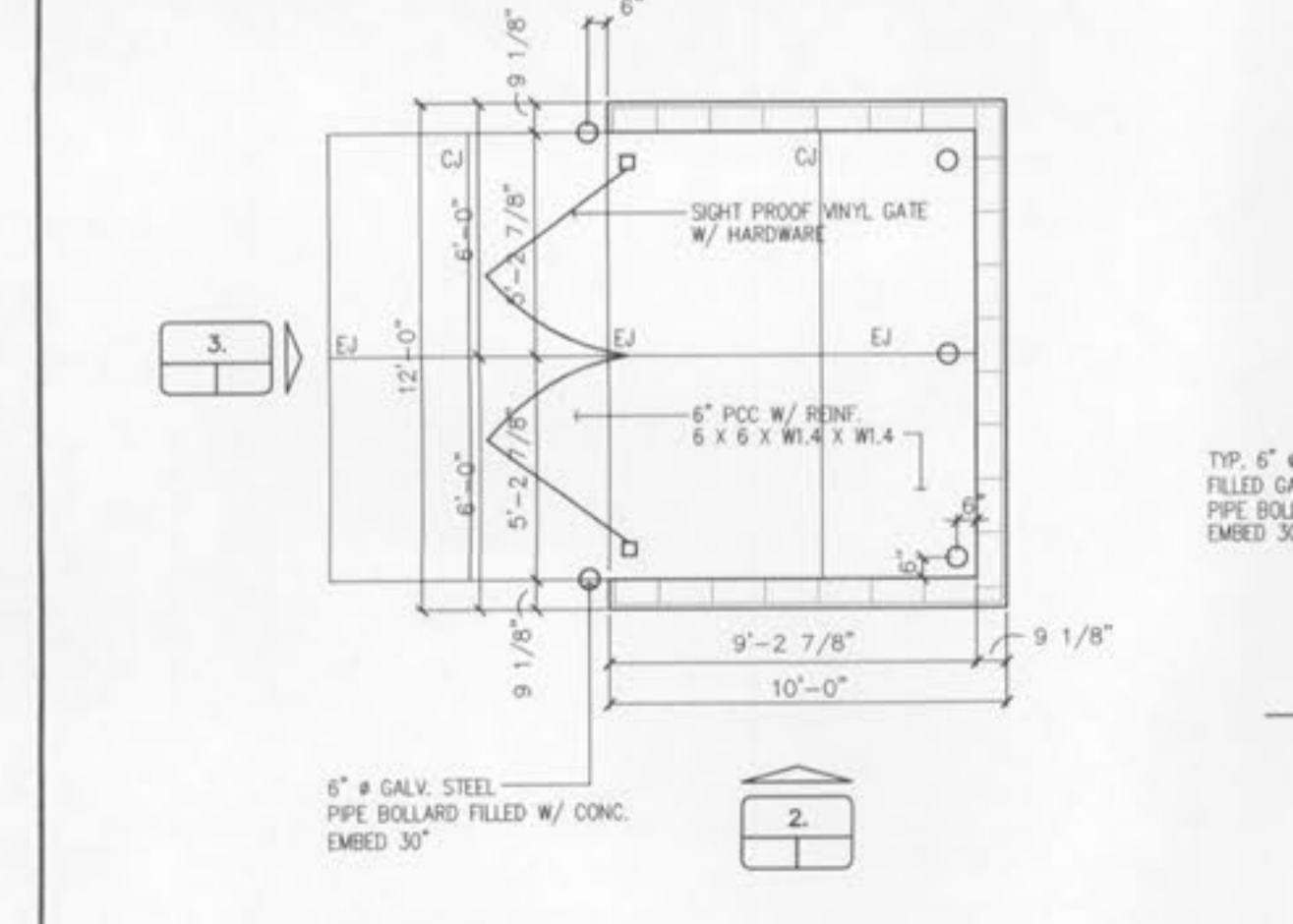
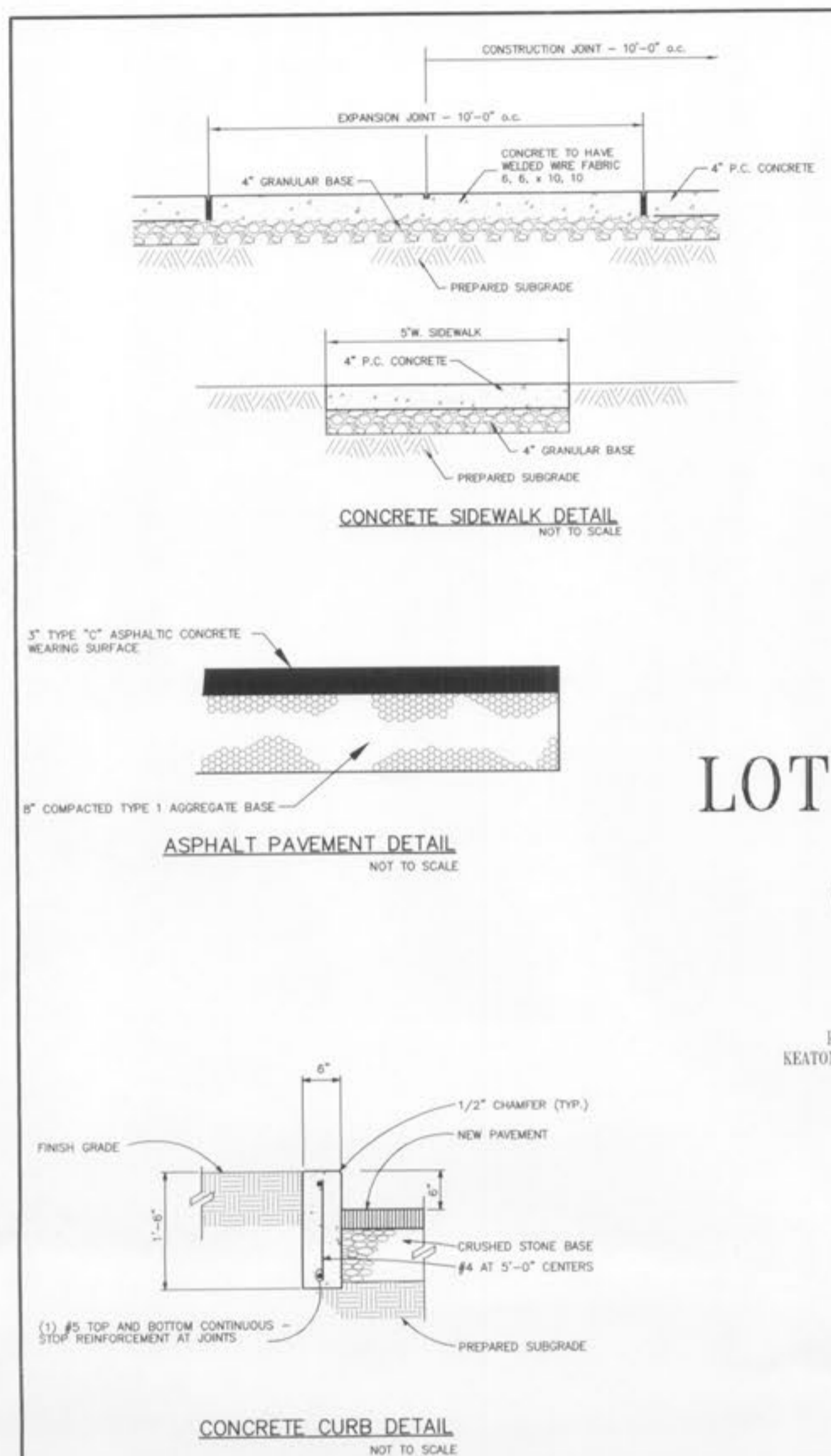
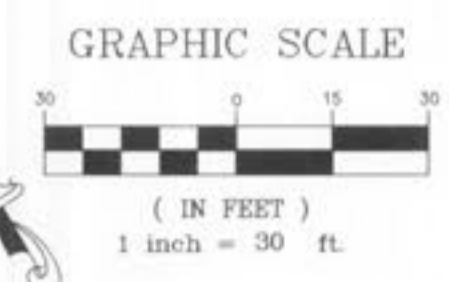
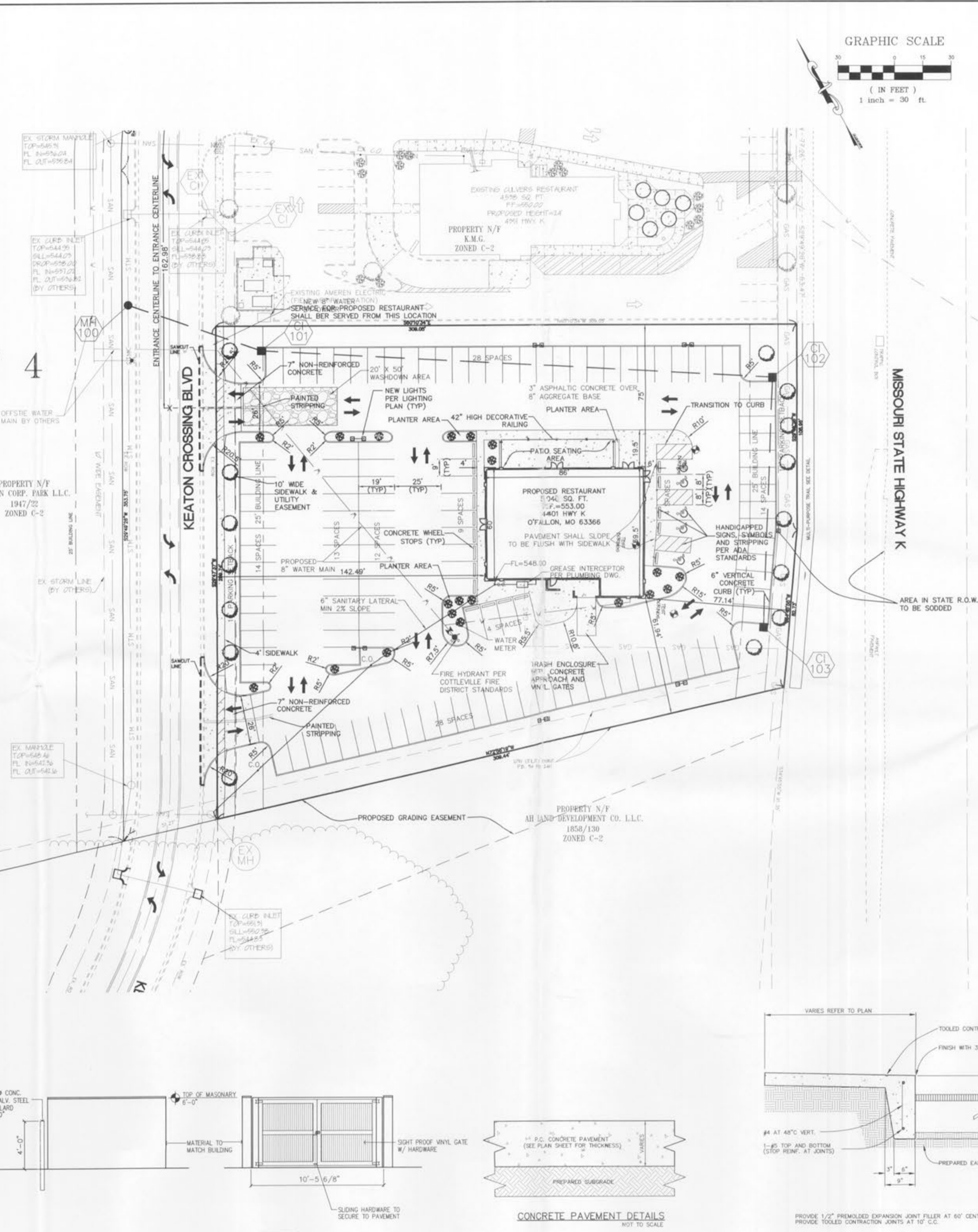


**SITE PLAN
CULPEPPER'S
BAR & GRILL**

02-12221E 12-22-03
 Per City Comments 01-23-04
 Per City Comments 02-06-04
 Per Water Service Location 02-17-04
 Per MoDOT Comments 02-18-04
 Storm Sewer 02-18-04
 Per Bldg. Dept. 03-08-04



1. TRASH ENCLOSURE PLAN NOT TO SCALE

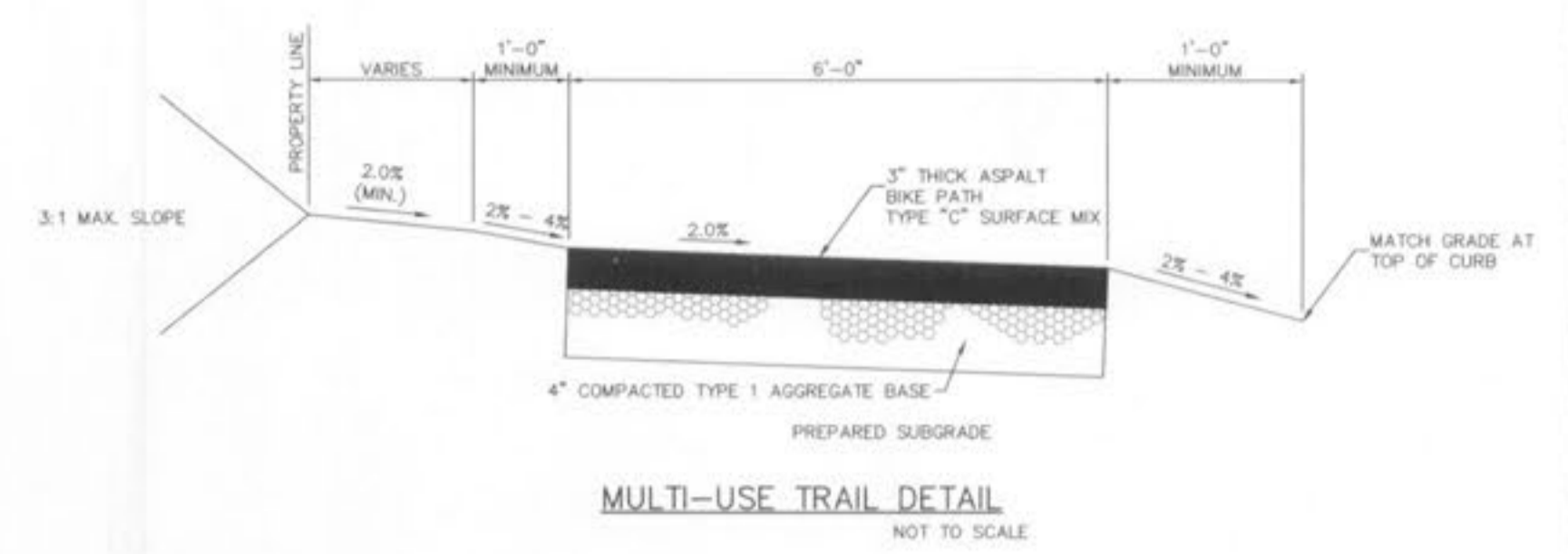
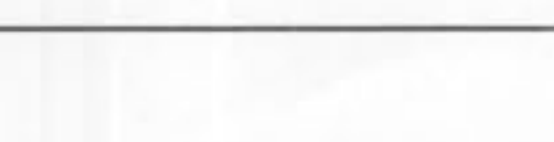


2. ELEVATION NOT TO SCALE

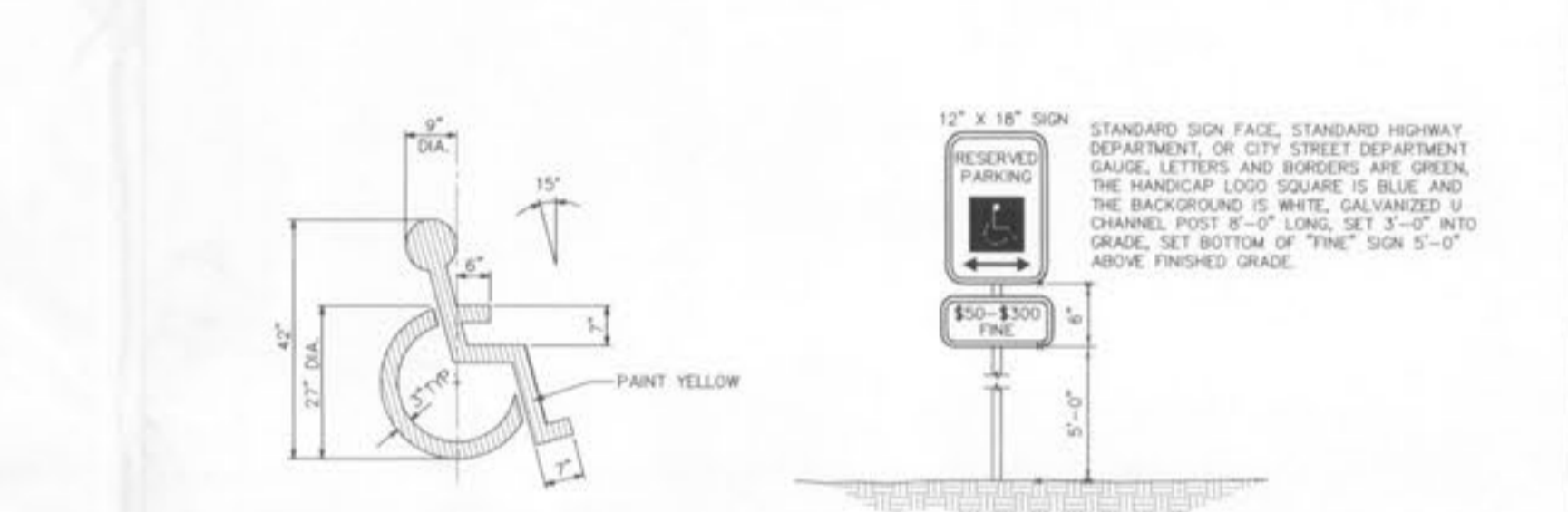
3. ELEVATION NOT TO SCALE



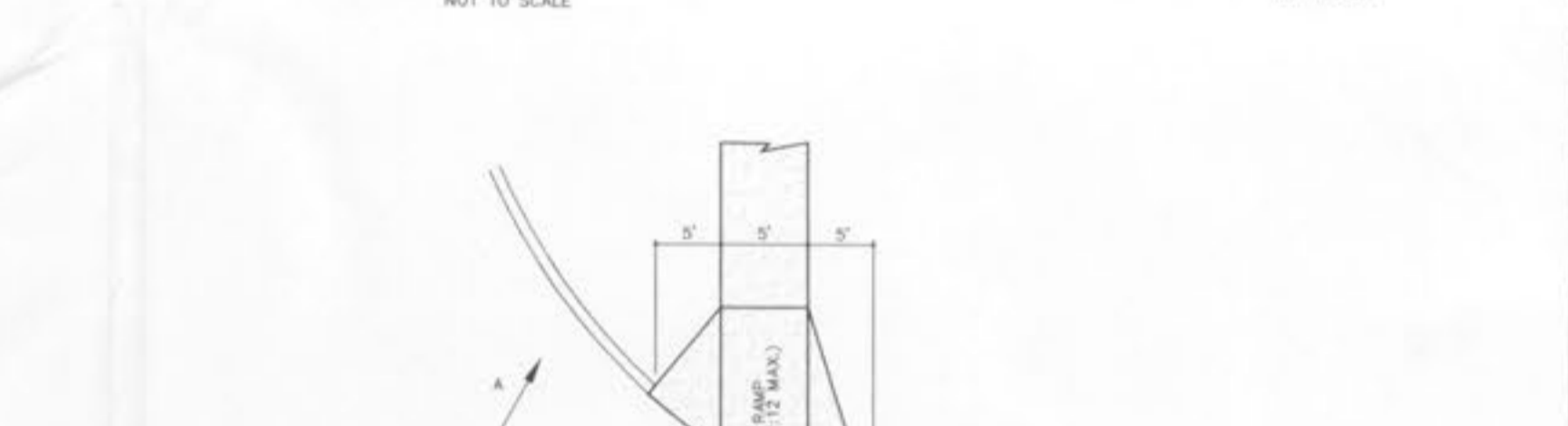
TURNED DOWN CONCRETE WALK NOT TO SCALE



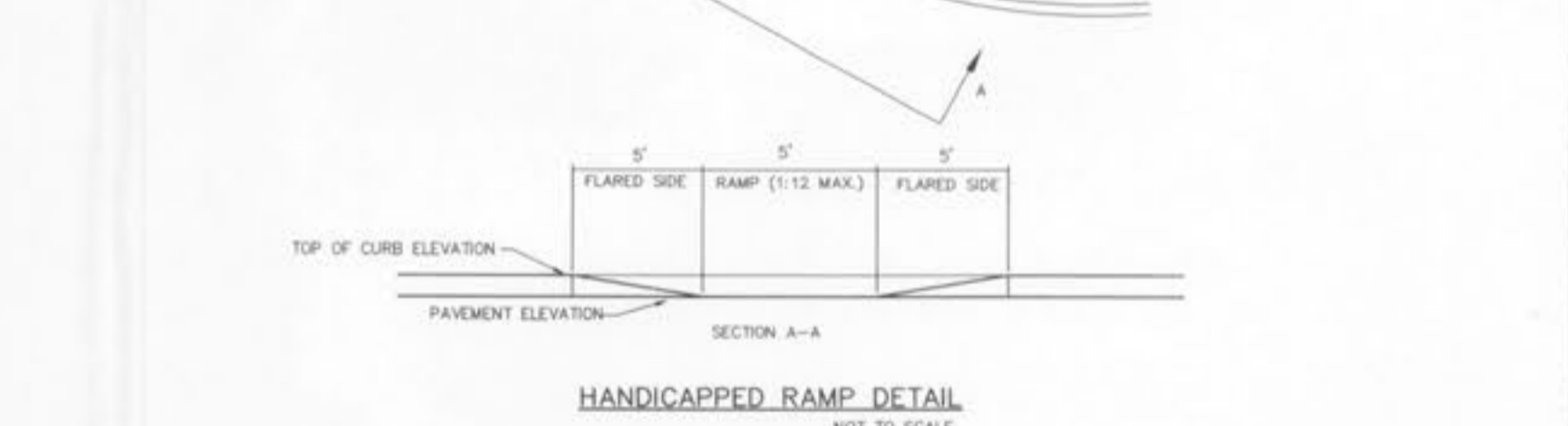
NOTES:
 PROVIDE HANDICAP RAMP WHERE TRAIL INTERSECTS ACCESS DRIVES OR STREETS OR WHERE TRAIL INTERSECTS WITH CURBING (SEE PLAN).
 PROVIDE STRIPING OR A COLORED TEXTURED PAVEMENT THROUGH THE ACCESS DRIVES OR STREETS INTO THE DEVELOPMENT.
 MAXIMUM SLOPE OF THE PATH SHALL NOT EXCEED 8% AND 2% CROSS SLOPE PER CITY OF FALLON SPECIFICATIONS.
 THE TRAIL SHALL BE CONSTRUCTED WITH A CONSISTENT SLOPE WITH VERTICAL CURVES A MINIMUM OF 50' IN LENGTH. AFTER FINAL COMPRESSION THE SURFACE SHALL BE SMOOTH AND TRUE TO THE ESTABLISHED CROWN AND GRADE. ANY LOW OR DEFECTIVE PLACES SHALL IMMEDIATELY BE REMEDIATED BY CUTTING OUT THE COURSE AT SUCH SPOTS AND REPLACING IT WITH FRESH HOT MIXTURE, WHICH SHALL BE IMMEDIATELY COMPACTED TO CONFORM WITH THE SURROUNDING AREA AND SHALL BE THOROUGHLY BONDED TO IT. THE FINISHED PAVEMENT SHALL BE SET FREE FROM DEPRESSIONS EXCEEDING ONE-EIGHTH INCH AS MEASURED WITH A TEN-FOOT STRAIGHT EDGE PARALLEL TO THE CENTERLINE OF THE TRAIL.



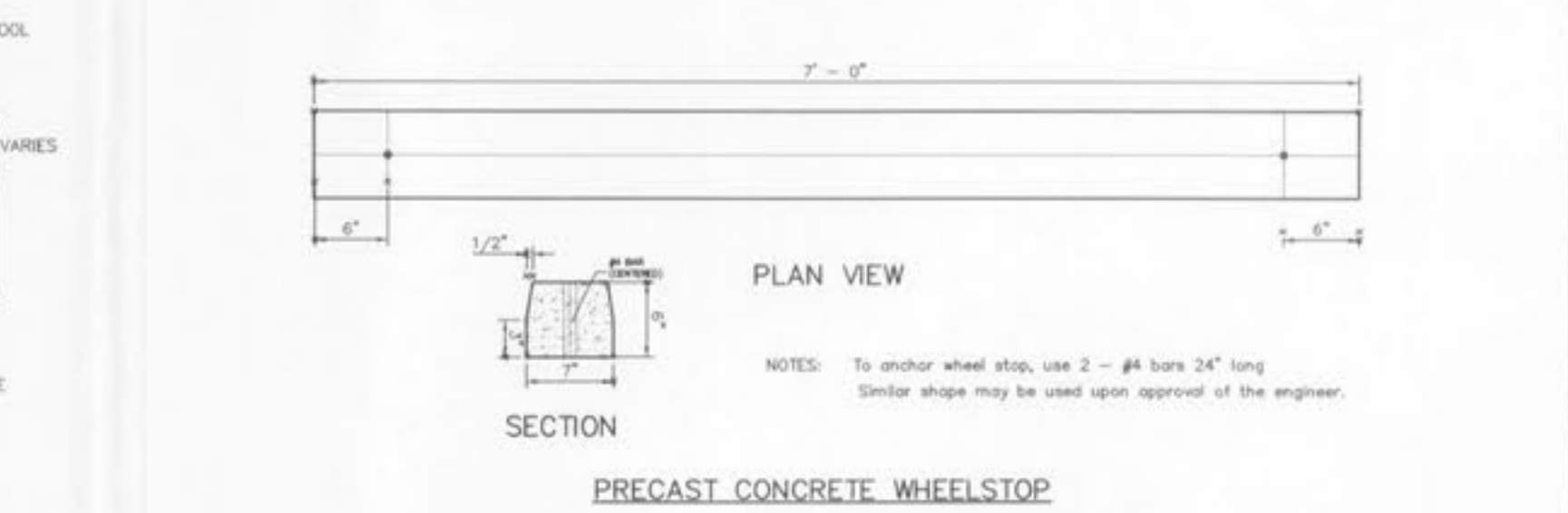
PAINTED HANDICAPPED PARKING SYMBOL NOT TO SCALE



HANDICAP PARKING SIGN NOT TO SCALE



HANDICAPPED RAMP DETAIL NOT TO SCALE



PRECAST CONCRETE WHEELSTOP

NOTES: To anchor wheel stop, use 2 - #4 bars 24\"/>

UNDERGROUND UTILITIES HAVE BEEN PLOTTED FROM AVAILABLE INFORMATION AND THEREFORE THEIR LOCATIONS SHALL BE CONSIDERED APPROXIMATE ONLY. THE VERIFICATION OF THE LOCATION OF ALL UNDERGROUND UTILITIES, EITHER SHOWN OR NOT SHOWN ON THESE PLANS SHALL BE THE RESPONSIBILITY OF THE CONTRACTOR, AND SHALL BE LOCATED PRIOR TO ANY GRADING OR CONSTRUCTION OF THE IMPROVEMENTS.

O'FALLON FILE NUMBER 3302.07

E:\DWG\A12000PLUS\12221e-culpepper\Constr action\12221ECON.dwg, SITE PLAN(2), 3/16/2004 9:36:44 AM, Station: 63 KTK