

LEGEND

LD. - NOMINAL PIPE SIZE
 O.D. - OUTSIDE DIAMETER OF PIPE
 H - COVER ABOVE TOP OF PIPE
 A - EMBEDDED BELOW PIPE (SEE TABLE)

TAMPED BACK FILL
 GRANULAR BEDDING

TABLE OF EMBEDDED DEPTHS BELOW PIPE		
LD.	A MRL SOIL	A MRL ROCK
2 1/2" & SMALLER	3"	6"

GRANULAR BEDDING SHALL BE CRUSHED ROCK OR PEA GRAVEL WITH NOT LESS THAN 80% PASSING 1/2" (80% PASSING 3/4" FOR 30" AND LARGER PIPE) AND NOT LESS THAN 80% RETAINED ON A #4. TO BE PLACED IN NOT MORE THAN 6" LAYERS AND COMPACTED BY SLONG WITH A SHOVEL OR VIBRATING.

COMPACTED BACK FILL SHALL BE FINELY DIVIDED JOB EXCAVATED MATERIAL FREE FROM DEBRIS, ORGANIC MATERIAL AND STONES, PLACED IN UNIFORM LAYERS NOT MORE THAN 6" THICK, COMPACTED TO 80% MAXIMUM DENSITY AS DETERMINED BY A.S.T.M. D698, OR GRADED AGGREGATE. GRANULAR BACK FILL MATERIAL MAY BE SUBSTITUTED FOR ALL OR PART OF COMPACTED BACK FILL.

TAMPED BACK FILL SHALL BE FINELY DIVIDED JOB EXCAVATED MATERIAL FREE FROM DEBRIS, ORGANIC MATERIAL AND STONES, HAND PLACED IN UNIFORM LAYERS NOT MORE THAN 6" THICK AND TAMPED AROUND CONDUIT PIPE. GRANULAR BACK FILL MATERIAL MAY BE SUBSTITUTED FOR ALL OR PART OF TAMPED BACK FILL.

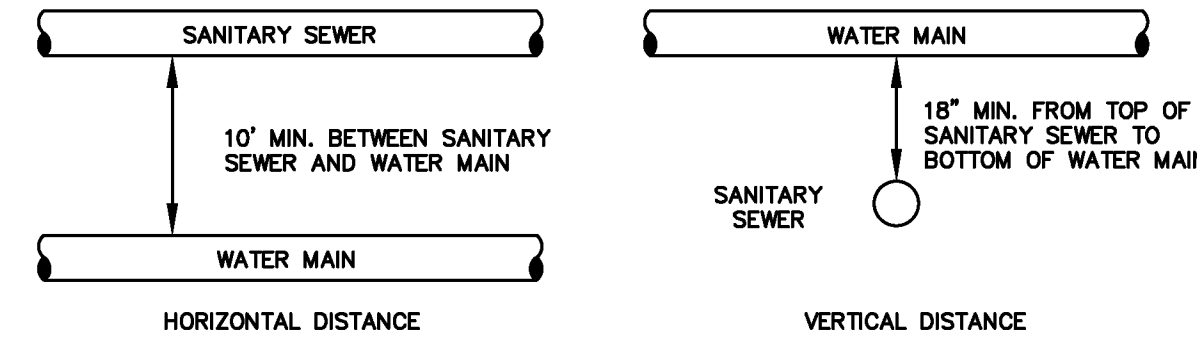
TRENCH BACK FILL SHALL BE AS REQUIRED IN THE "LAYING AND BACK FILL" SECTION OF THE DETAILED SPECIFICATIONS.

EMBEDMENT THE TYPE OF EMBEDMENT TO BE USED SHALL BE AS SPECIFIED IN THE PLANS AND SPECIFICATIONS.

TRACER WIRE REQUIRED ON ALL WATER MAINS

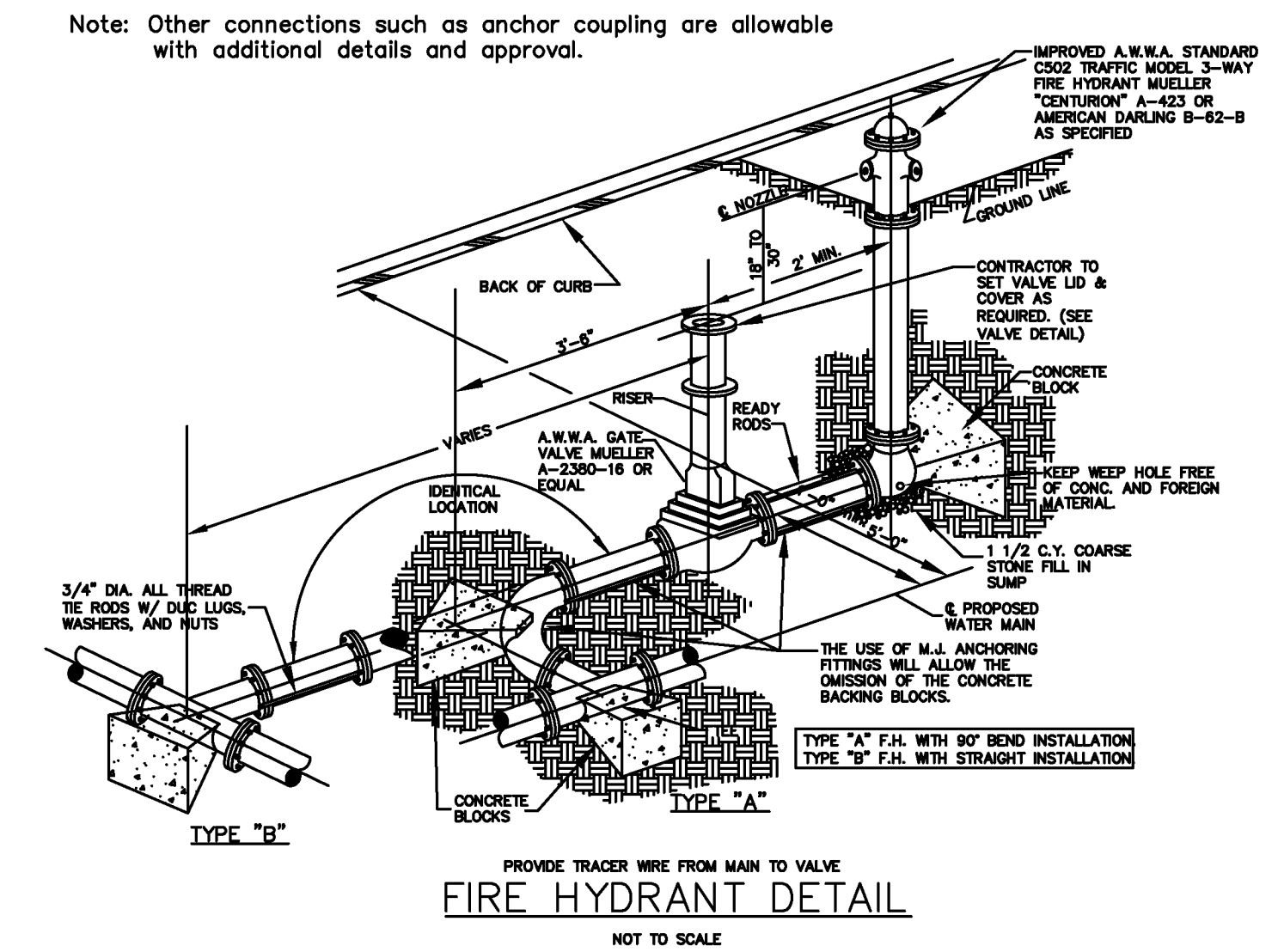
WATER MAIN EMBEDDED
NOT TO SCALE

CITY OF O'FALLON
 ENGINEERING DEPARTMENT
 O'FALLON, MISSOURI
WATER MAIN EMBEDDED



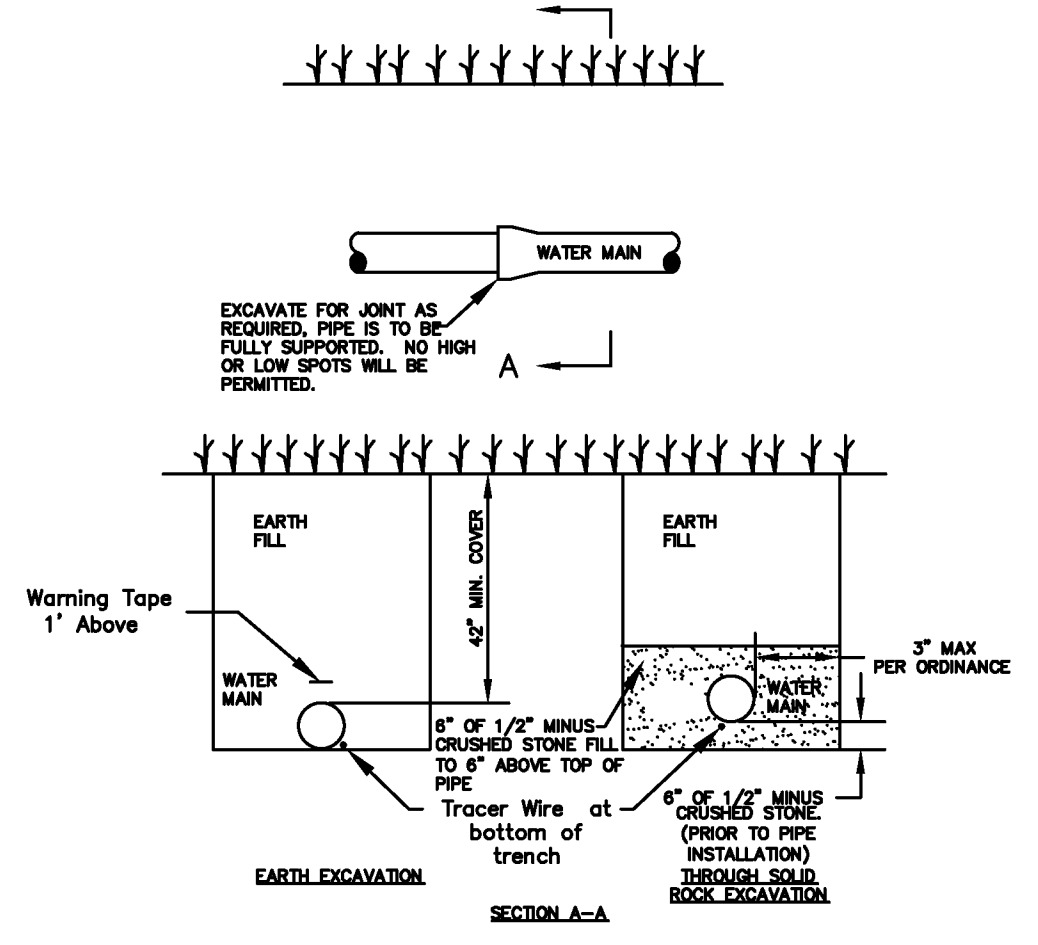
TYPICAL WATER AND SEWER SEPARATION
NOT TO SCALE

CITY OF O'FALLON
 ENGINEERING DEPARTMENT
 O'FALLON, MISSOURI
WATER AND SEWER SEPARATION DETAIL



FIRE HYDRANT DETAIL
NOT TO SCALE

CITY OF O'FALLON
 ENGINEERING DEPARTMENT
 O'FALLON, MISSOURI
FIRE HYDRANT DETAILS



TYPICAL WATER MAIN INSTALLATION DETAILS
NOT TO SCALE

CITY OF O'FALLON
 ENGINEERING DEPARTMENT
 O'FALLON, MISSOURI
WATER MAIN INSTALLATION DETAIL

Ductile Iron Pipe installation shall follow the Ductile Iron Research Association (DIPRA) guide line.
 The Installation of PVC Pipe shall follow the Uni-Bell PVC Pipe Association Handbook of PVC Design and Construction.

PROJECT TITLE:
**CULVERS OF O'FALLON-
 BRAMBLETT CROSSING**

THD DESIGN GROUP, INC.
 "your solution for engineering and surveying"
 COPYRIGHT 2016
 146 CHESTERFIELD INDUSTRIAL BLVD. CHESTERFIELD, MO 63005
 TEL: 636-594-2972
 WEB: THDDESIGNGROUP.COM

Owner Info: Hoerman Family, LP
Developer/Owner Under Contract: KK+G, LLC.
Contact: Allen Walz
1920 Jefferson Street
Jefferson City, MO 65109
Water Construction Details

P+Z No: 3805.08.02
Approval Date:
01/07/2016
City No.

Page No.
21 OF 23