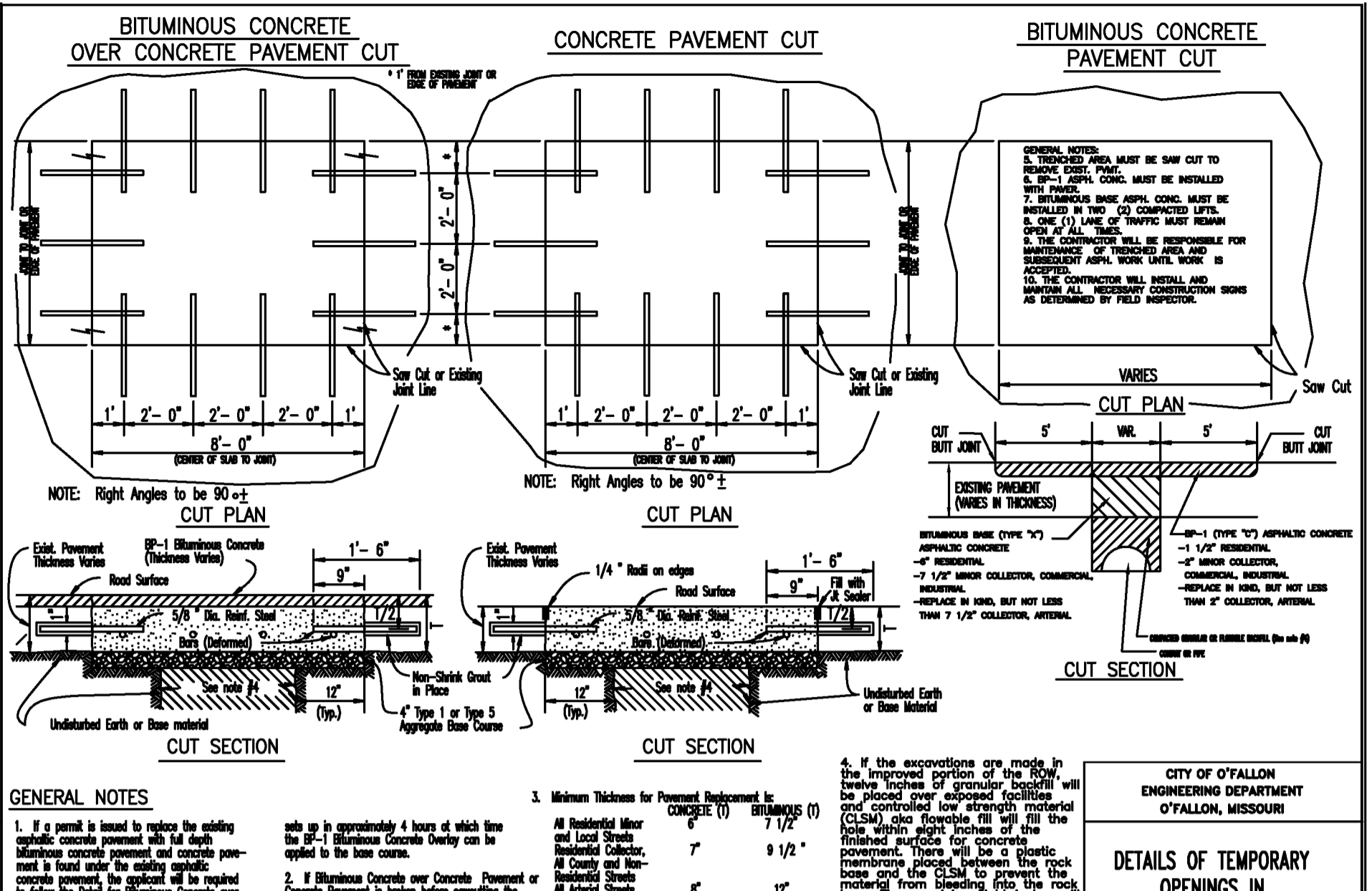


- GENERAL NOTES**
- Do not scale drawings. Follow dimensions.
 - For longitudinal and transverse joints, dowel and tie bar requirements and curb dimensions not shown refer to the Pavement Construction Details for Joints and Curbs.
 - All necessary pavement markings shall be as required by City of O'Fallon.
 - For roadway cross slopes, pavement types and thickness refer to Standard Typical Sections.
 - Permits will not be issued for building construction on lots abutting a temporary turnaround unless and until the turnaround is actually constructed.
 - The removal of the temporary turnaround surface, the restoration of the disturbed ground, and the extension of any sidewalk shall be the responsibility of the party that will be extending the street.
 - Other temporary turn around types can be considered depending on type and dimensions.
 - Stub streets over two hundred fifty (250) feet shall have a minimum temporary turnaround pavement radius of forty (40) feet, covered by a temporary turnaround easement to remain until the road is extended and plotted. In lieu of turnarounds, the Planning and Zoning Commission may approve a "T" or "V" shaped paved space on streets which are less than two hundred fifty (250) feet in length and are planned to be extended in the future.

CITY OF O'FALLON
ENGINEERING DEPARTMENT
O'FALLON, MISSOURI

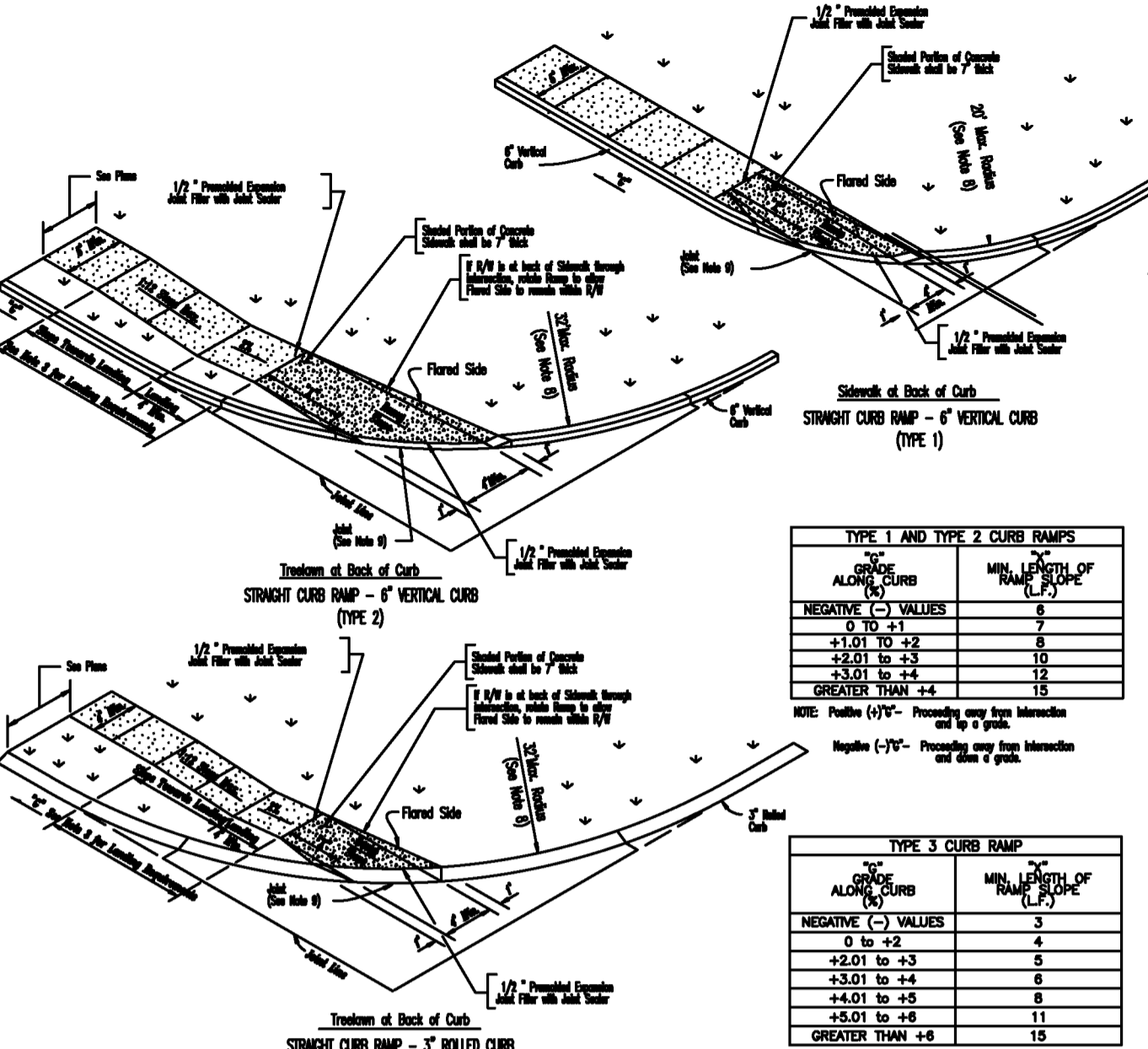
PAVEMENT CONSTRUCTION DETAILS
RESIDENTIAL
TEMPORARY TURNAROUND



- GENERAL NOTES**
- If a permit is issued to reduce the existing sidewalk, the contractor shall provide a temporary concrete curb and pavement to the existing sidewalk edge. The concrete curb shall be 12 inches high and 12 inches wide. The concrete pavement shall be 4 inches thick and 12 inches wide. The concrete curb shall be 12 inches high and 12 inches wide. The concrete pavement shall be 4 inches thick and 12 inches wide.
 - Bituminous Concrete over Concrete Pavement or Concrete Pavement is to be placed on a prepared subgrade. The concrete curb shall be 12 inches high and 12 inches wide. The concrete pavement shall be 4 inches thick and 12 inches wide.
 - Minimum thickness for concrete curb shall be 12 inches. The concrete curb shall be 12 inches high and 12 inches wide. The concrete pavement shall be 4 inches thick and 12 inches wide.
 - If the subgrade is not suitable for concrete, the contractor shall provide a prepared subgrade. The concrete curb shall be 12 inches high and 12 inches wide. The concrete pavement shall be 4 inches thick and 12 inches wide.

CITY OF O'FALLON
ENGINEERING DEPARTMENT
O'FALLON, MISSOURI

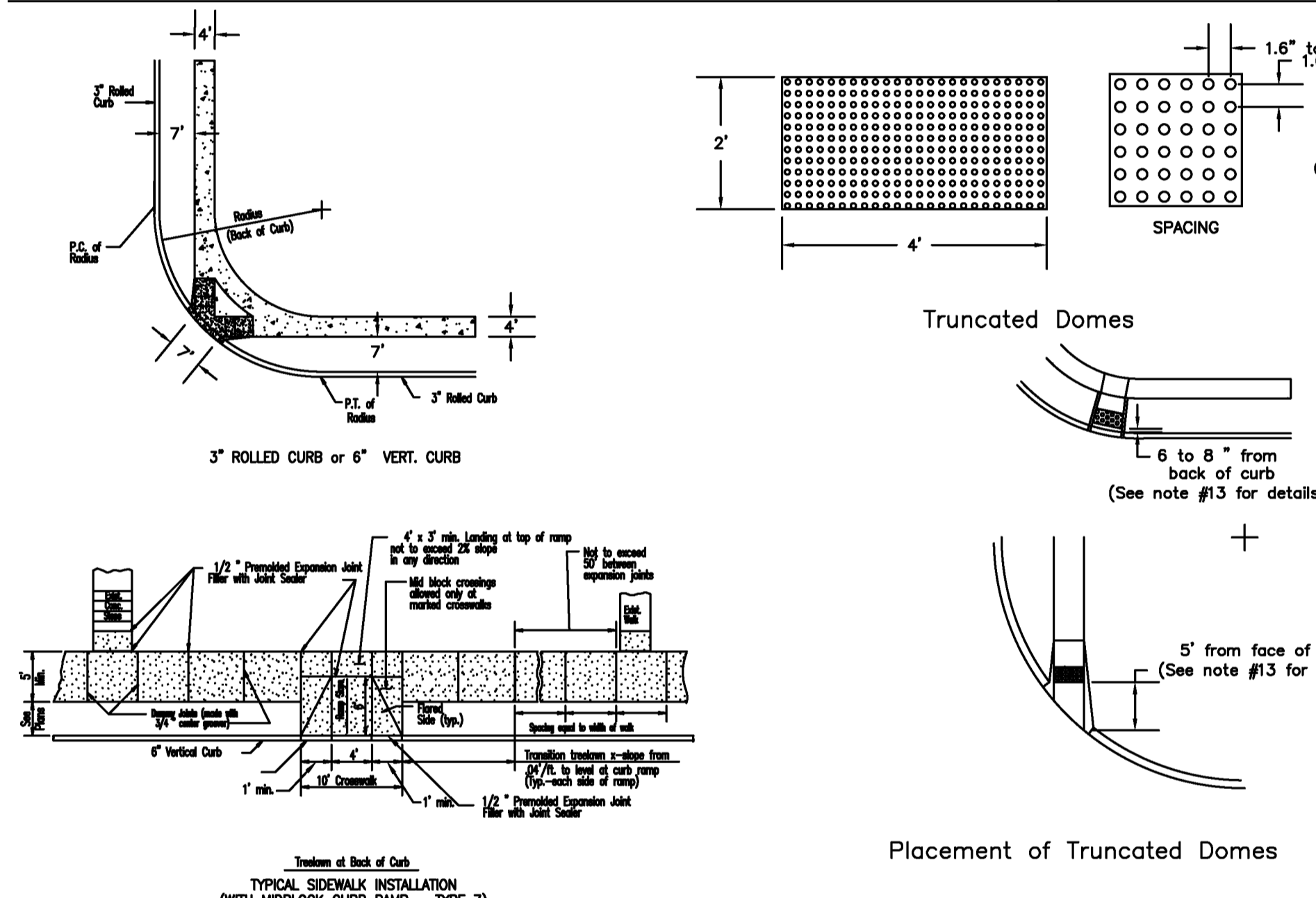
DETAILS OF TEMPORARY OPENINGS IN
ROADWAY PAVEMENT



- GENERAL NOTES**
- Do not scale drawings. Follow dimensions.
 - Standard and sidewalk curbs shall be constructed in accordance with the current approved American Disabilities Act Access Guidelines (ADAAG).
 - Minimum sidewalk width along 6" vertical curb shall be 5 feet. Minimum sidewalk width along 3" rolled curb shall be 4 feet.
 - Maximum sidewalk cross slope 0.02/ft.
 - All sidewalk curbs shall be 4" thick, except where noted. All sidewalk curbs shall be 4" thick, except where noted.
 - When curb ramps meet pavement, bullnose will not be permitted.
 - If integral concrete curb is constructed, a dummy joint shall be placed at the bottom of the curb. If concrete curb is dropped on block and pavement, provide full depth curb across ramp from outer point of curb taper to outer point of curb taper.
 - For sidewalk locations on Cul-De-Sacs, refer to "Pavement Construction Details".
 - For longitudinal and transverse joints, dowel and tie bar requirements and dimensions, refer to the "Integral Curb Pavement Typical Sections and Details".
 - For roadway cross slopes, pavement types, and thickness, refer to Standard Typical Sections.
 - The intersection of two sidewalks or the intersection of a sidewalk and a driveway shall be a minimum of 5 feet wide. The intersection of a sidewalk and a driveway shall be a minimum of 5 feet wide.
 - All curb ramps shall have a detectable warning complying with American Disabilities Act Access Guidelines (ADAAG).

CITY OF O'FALLON
ENGINEERING DEPARTMENT
O'FALLON, MISSOURI

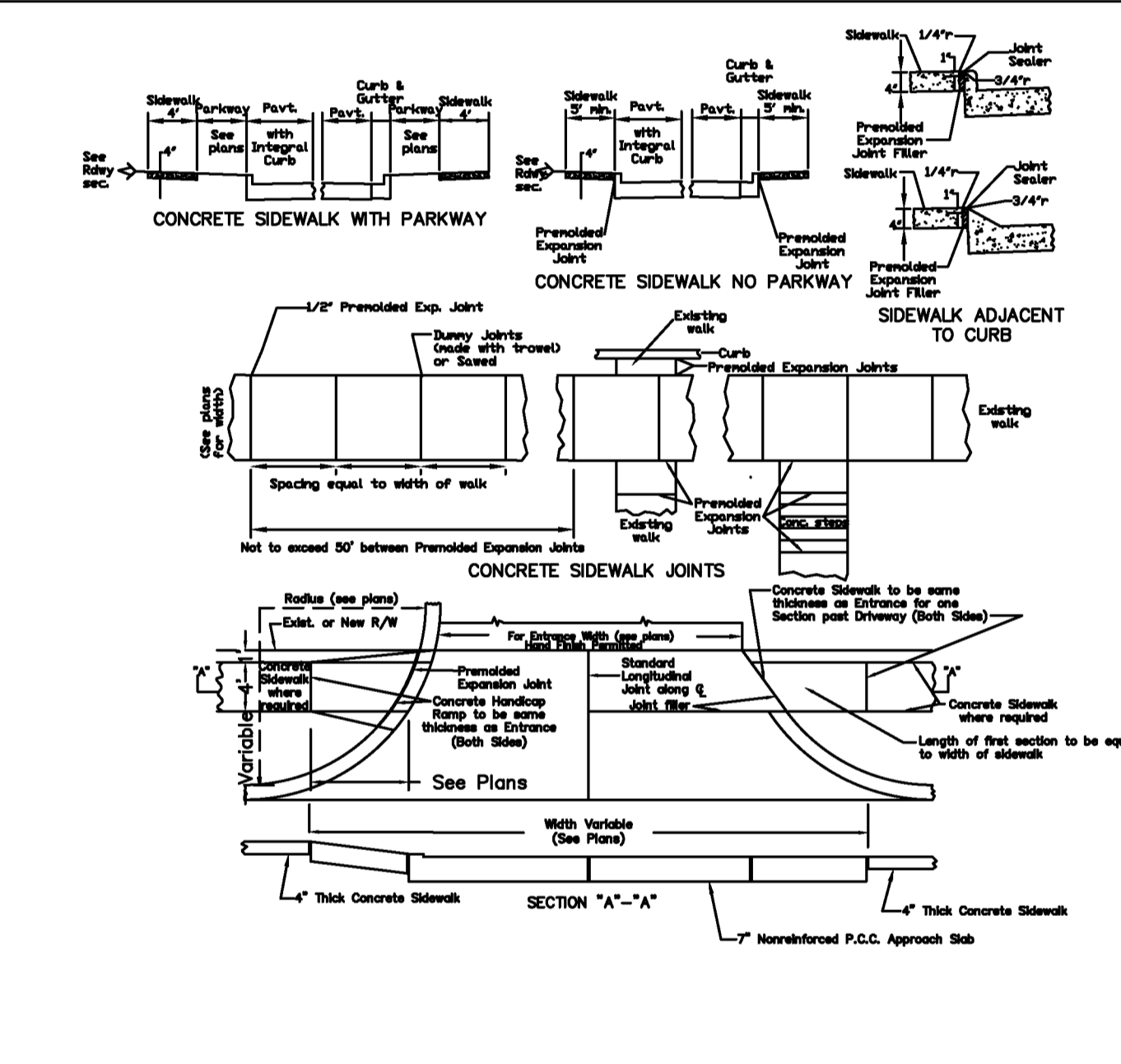
CONCRETE SIDEWALK
WITHIN CUL-DE-SACS



- GENERAL NOTES**
- Do not scale drawing. Follow dimensions.
 - Standard and sidewalk curbs shall be constructed in accordance with the current approved American Disabilities Act Access Guidelines (ADAAG).
 - Minimum sidewalk width along 6" vertical curb shall be 5 feet. Minimum sidewalk width along 3" rolled curb shall be 4 feet.
 - Maximum sidewalk cross slope 0.02/ft.
 - All sidewalk curbs shall be 4" thick, except where noted. All sidewalk curbs shall be 4" thick, except where noted.
 - When curb ramps meet pavement, bullnose will not be permitted.
 - If integral concrete curb is constructed, a dummy joint shall be placed at the bottom of the curb. If concrete curb is dropped on block and pavement, provide full depth curb across ramp from outer point of curb taper to outer point of curb taper.
 - For pavement longitudinal and transverse joints and dowel and tie bar requirements and dimensions, refer to the "Integral Curb Pavement Typical Sections and Details".
 - For roadway cross slopes, pavement types, and thickness, refer to Standard Typical Sections.
 - The intersection of two sidewalks or the intersection of a sidewalk and a driveway shall be a minimum of 5 feet wide. The intersection of a sidewalk and a driveway shall be a minimum of 5 feet wide.
 - All curb ramps shall have a detectable warning complying with American Disabilities Act Access Guidelines (ADAAG).
 - All ramps must tie up with the corresponding intersection.
 - All truncated domes shall run parallel to the road that it's crossing.
 - Truncated warning domes shall not be stamped and will be an ADA approved product.

CITY OF O'FALLON
ENGINEERING DEPARTMENT
O'FALLON, MISSOURI

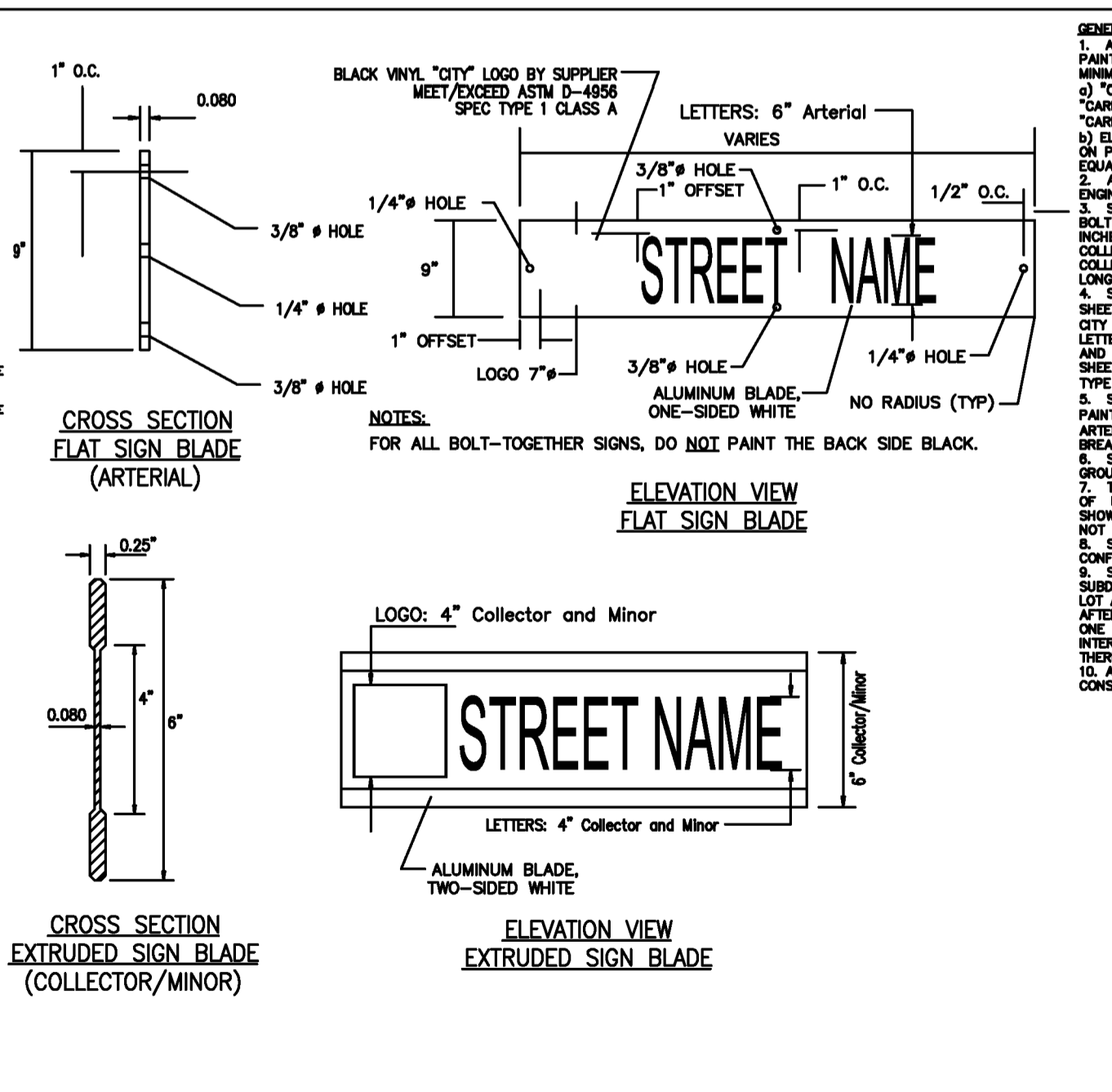
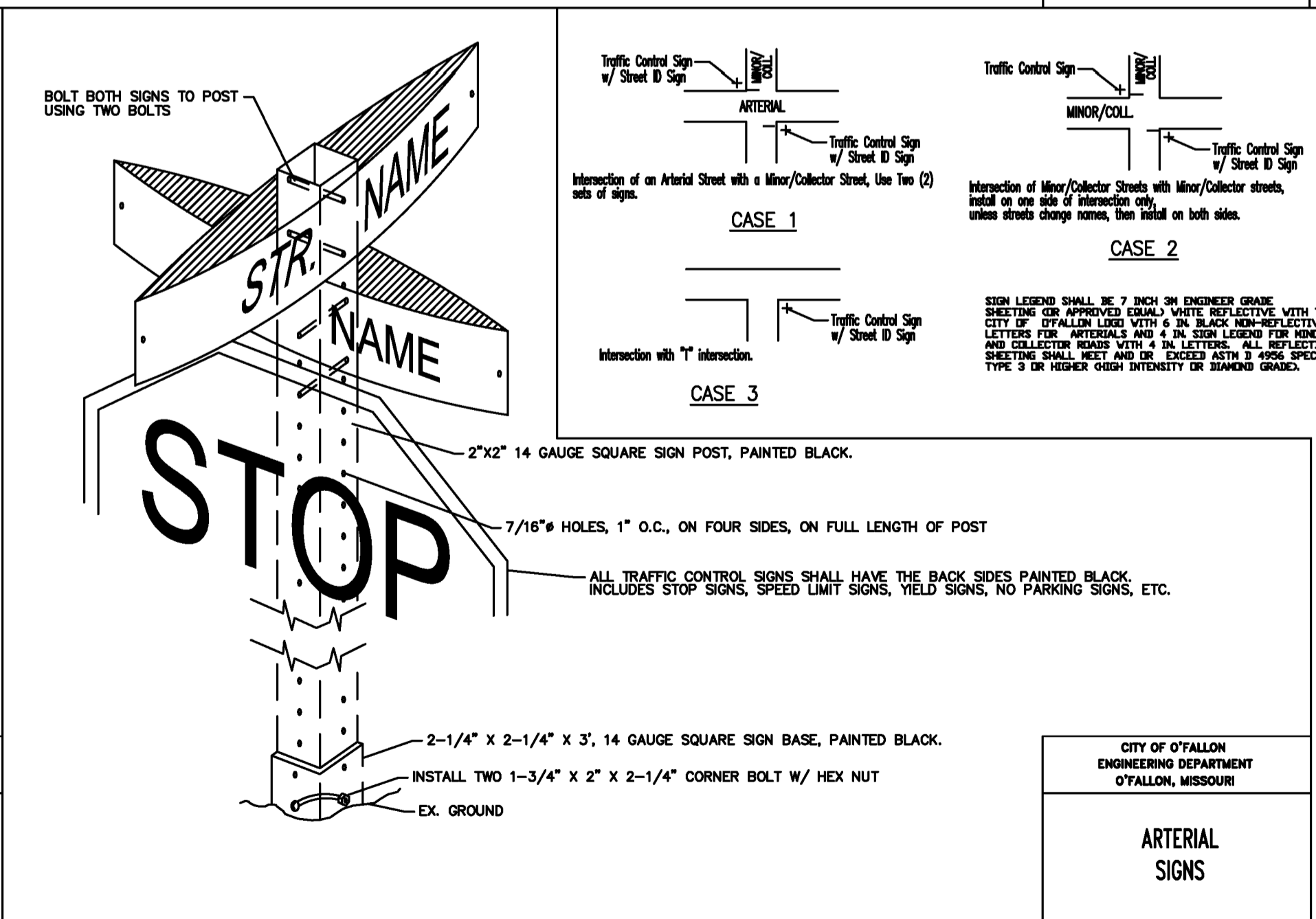
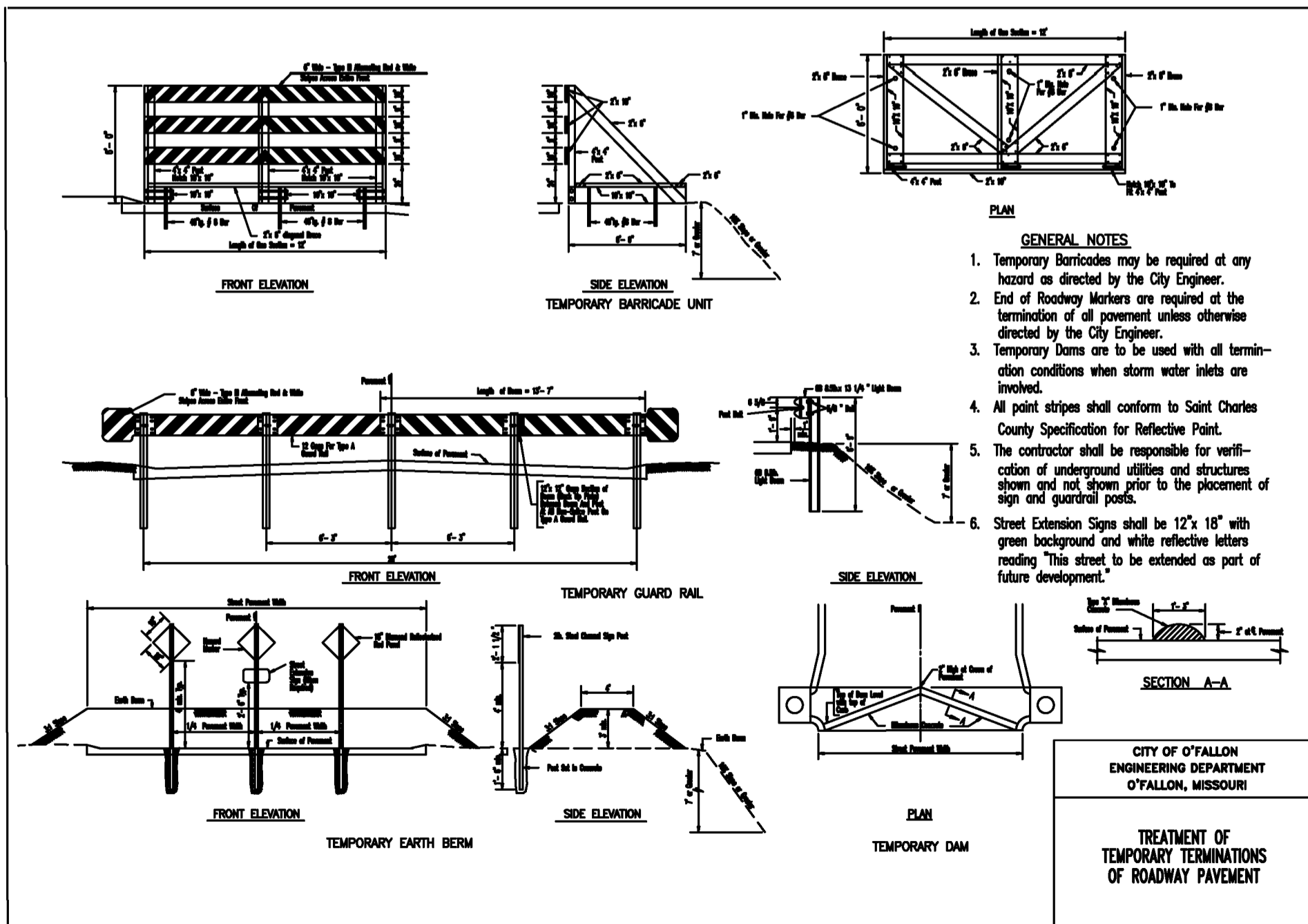
PAVEMENT CONSTRUCTION DETAILS
CONCRETE SIDEWALK
AND CURB RAMPS



- GENERAL NOTES**
- Do not scale drawing. Follow dimensions.
 - Sidewalk cross slope 0.02/ft.
 - Sidewalk thickness increases to 6" on each side of Private Driveways and 7" on each side of Commercial Driveways for one section of sidewalk equal in length to the width of the sidewalk. See "Entrance Construction Details".
 - For sidewalk locations on Cul-De-Sacs see "Pavement Construction Details".
 - For longitudinal and transverse joints, dowel and tie bar requirements and dimensions refer to the "Integral Curb Pavement Typical Sections and Details".
 - For roadway cross slopes, pavement types, and thickness, refer to Standard Typical Section.

CITY OF O'FALLON
ENGINEERING DEPARTMENT
O'FALLON, MISSOURI

CONCRETE SIDEWALK
THROUGH
COMMERCIAL ENTRANCES



- GENERAL NOTES**
- ALL SIGN POSTS AND BACK OF SIGNS THAT ARE TO BE PAINTED BLACK SHALL USE A PAINT SYSTEM THAT PROVIDES A MINIMUM 7 YEAR LIFE EXPECTANCY. MAY USE:
 - "CARBOLINE RUSTPROOF" BASE AT 1-3 MILS THICK.
 - "CARBOLINE R33" MID-LAYER AT 3-5 MILS THICK.
 - "CARBOLINE 133" TOP COAT OR APPROVED EQUAL, OR
 - ELECTROSTATIC APPLIED, BLACK POWDER COATED AND BAKED ON PAINT SYSTEM AT 2-3 MILS THICKNESS OR APPROVED EQUAL.
 - ALL SIGN LOCATIONS AND SIZES MUST BE APPROVED BY THE ENGINEERING DIVISION PRIOR TO INSTALLATION.
 - STREET NAME SIGN PLATES SHALL BE 8 INCHES WIDE FLAT. BOLT TOGETHER FOR ANY ARTERIAL INTERSECTIONS AND 6 INCHES WIDE EXTRUDED ALUMINUM PANELS FOR ALL MINOR AND COLLECTOR ROADS. TYPICAL LENGTHS FOR MINOR AND COLLECTOR SIGNS SHALL BE 24 TO 36 INCH LONGER, OR LONGER AS NEEDED, TO ACCOMMODATE STREET NAME.
 - SIGN SIZES SHALL BE 7 INCH MIN ENGINEER GRADE SHEETING (OR APPROVED EQUAL) WHITE REFLECTIVE WITH THE CITY OF O'FALLON LOGO WITH A 1/4 INCH HIGH-REFLECTIVE LETTERS FOR ARTERIALS AND 1/4 INCH HIGH-REFLECTIVE LETTERS FOR MINOR AND COLLECTOR SIGNS.
 - SIGN POSTS SHALL BE HEAVY "U" CHANNEL (2 LBS/FT) TYPE 3 OR HIGHER (MIN WEIGHT) OR DIAMOND GRADE.
 - SPEED LIMIT SIGNS MUST BE AT EVERY ENTRANCE TO A SUBURBAN ALONG THE LOT LINE BETWEEN FIRST AND SECOND LOT AND APPROXIMATELY EVERY TWO THOUSAND FEET THEREAFTER. ALL OTHER WARNING SIGNS SHALL BE AT INTERSECTION AND APPROXIMATELY EVERY TWO THOUSAND FEET THEREAFTER.
 - ALL SIGNS UNLESS OTHERWISE STATED, SHOULD BE CONSTRUCTED AND INSTALLED PER MUTCD.

CITY OF O'FALLON
ENGINEERING DEPARTMENT
O'FALLON, MISSOURI

ARTERIAL
SIGNS

CITY OF O'FALLON
ENGINEERING DEPARTMENT
O'FALLON, MISSOURI

SIGNS,
DETAILS AND LOCATIONS

PROJECT TITLE:
CULVERS OF O'FALLON-
BRAMBLETT CROSSING

THD DESIGN GROUP, INC.
"your solution for engineering and surveying"
COPYRIGHT 2016
146 CHESTERFIELD INDUSTRIAL BLVD, CHESTERFIELD, MO 63005
TEL: 636-594-3977
WEB: THDDESIGNGROUP.COM

Owner Info: Hoerman Family, LP
Developer/Owner Under Contract: KK+G, LLC.
Contact: Allen Walz
1920 Jefferson Street
Jefferson City, MO 65109

P+Z No: 3805.08.02
Approval Date:
01/07/2016
City No.

Page No.
23 OF 23