

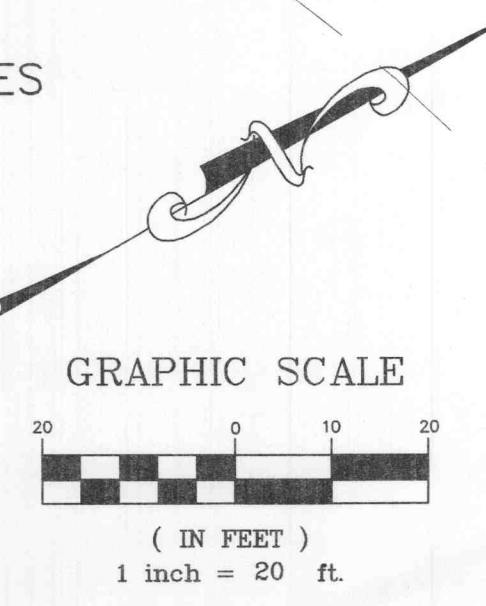
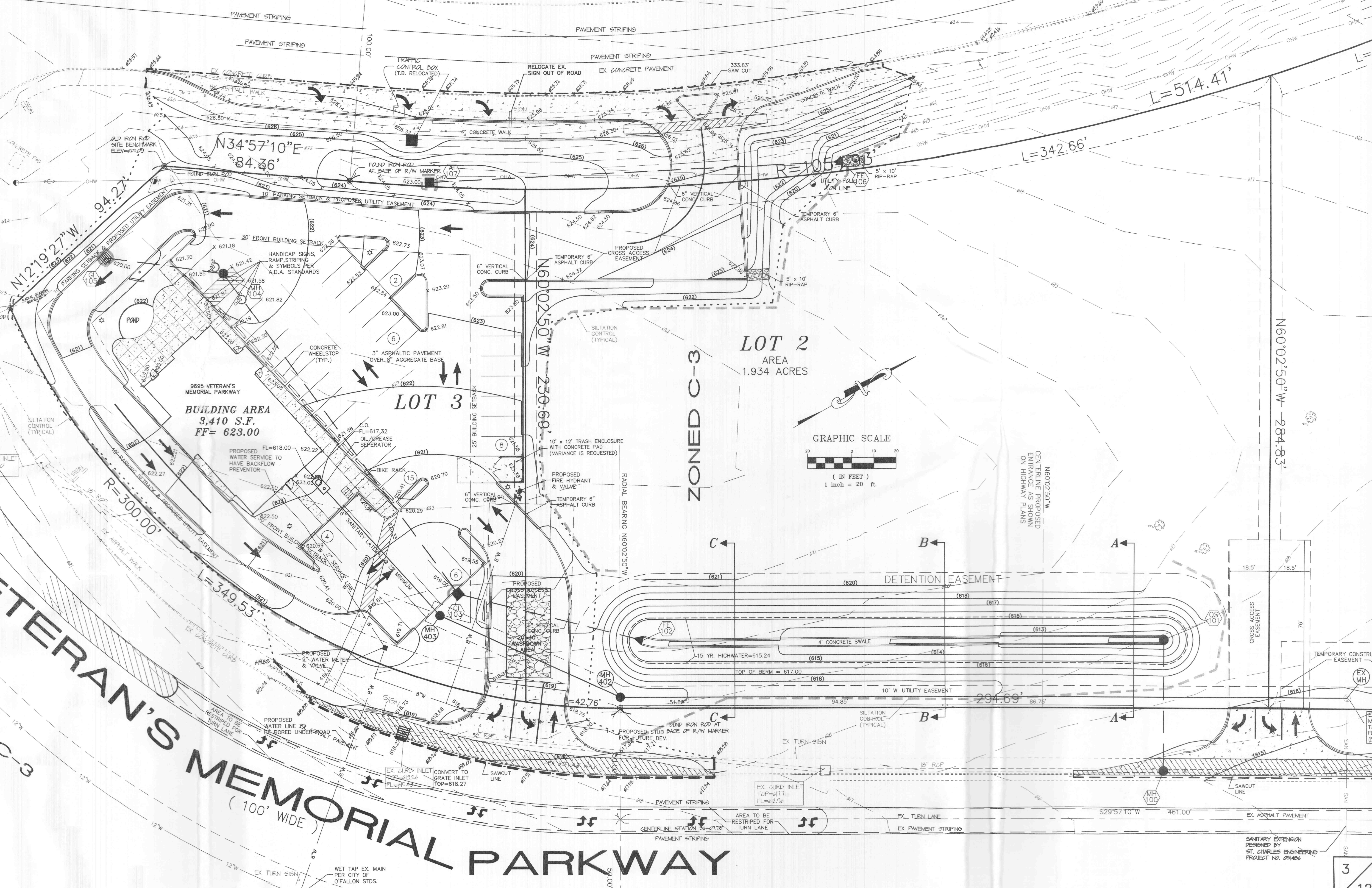
# BRYAN ROAD ( VARIABLE WIDTH )

N34°57'10"E 237.76'

R=954.93'

CENTERLINE STATION 18+65.64'

DIAL BEARING  
N29°57'10"E



ZONED C-3

**LOT 2**  
AREA  
1.934 ACRES

**LOT 3**  
BUILDING AREA  
3,410 S.F.  
FF= 623.00

# VETERAN'S MEMORIAL PARKWAY ( 100' WIDE )

SANITARY EXTENSION  
DESIGNED BY  
ST. CHARLES ENGINEERING  
PROJECT NO. 09486

E:\DWG\12000PLUS\12276A\CONSTRUCTION\12276Acon.dwg, Grading 3, 6/4/2004 8:58:29 AM, Station 38 ALJ