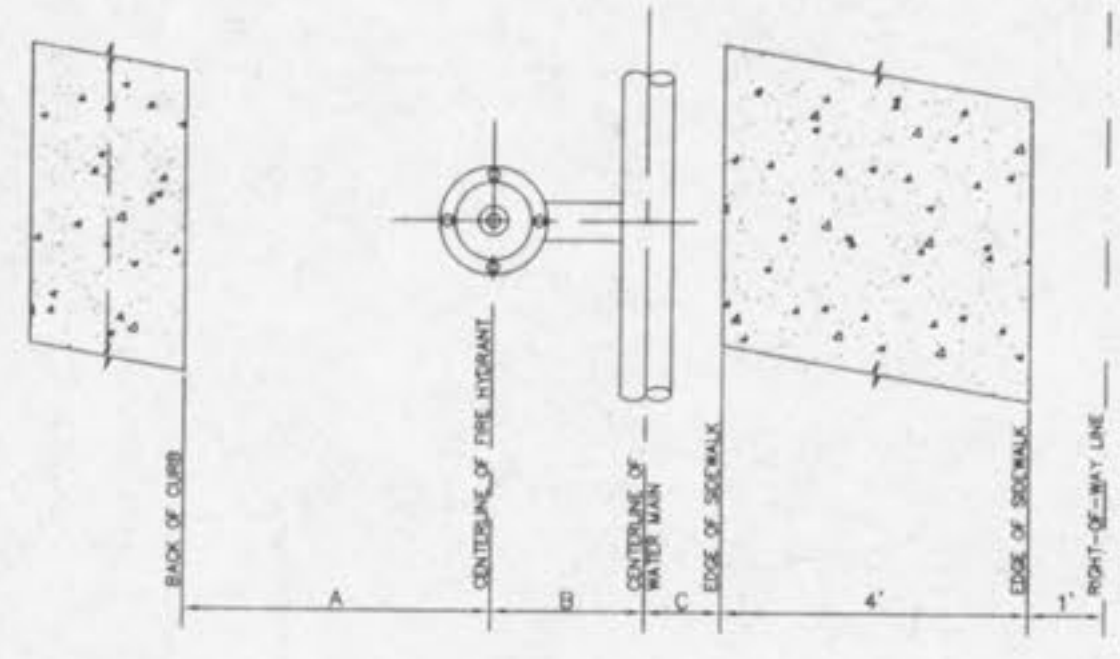


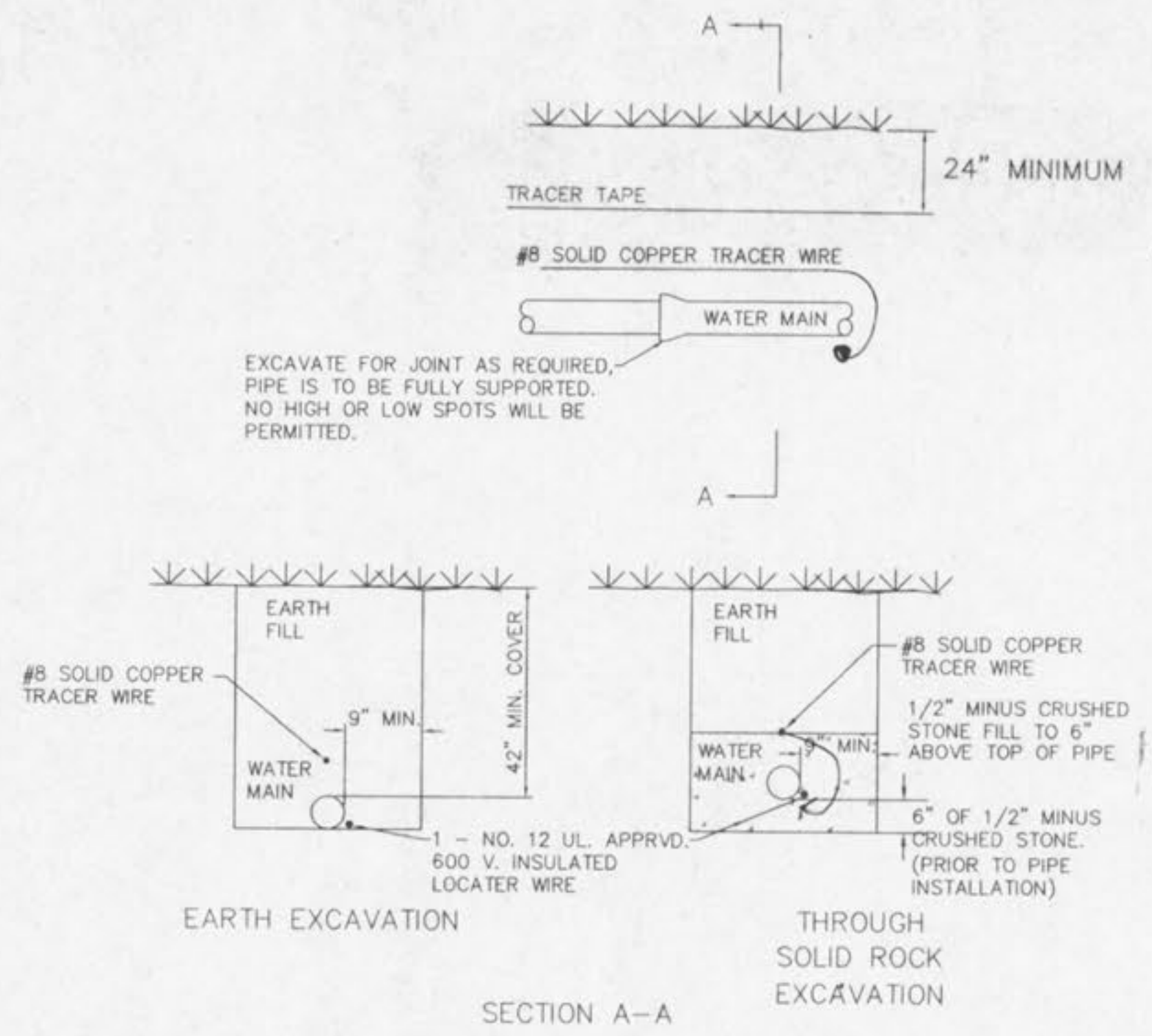
REVISED : 10-13-00 CITY
 REVISED : 10-25-00 CITY
 REVISED : 11-02-00 CITY



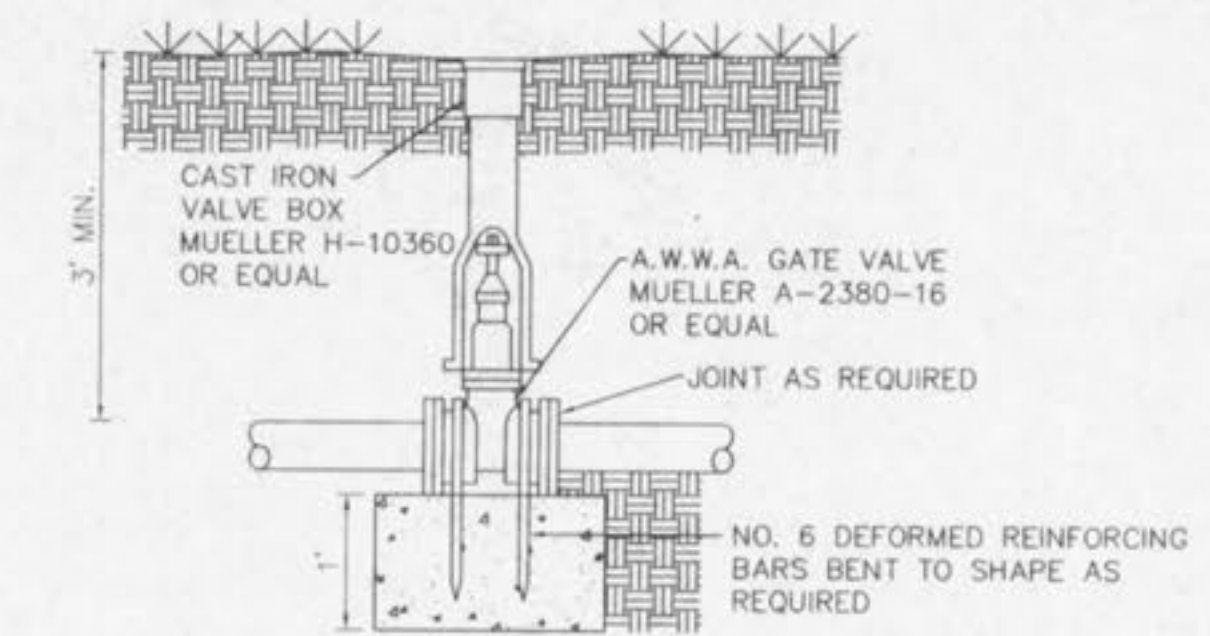
CONFIGURATION

50' RIGHT-OF-WAY/26' PAVEMENT/WITHOUT SIDEWALK	A	B	C
50' RIGHT-OF-WAY/26' PAVEMENT/WITH SIDEWALK	4'	2'	N/A
	4'	2'	1'

TYPICAL WATER MAIN AND FIRE HYDRANT LOCATIONS
 NOT TO SCALE



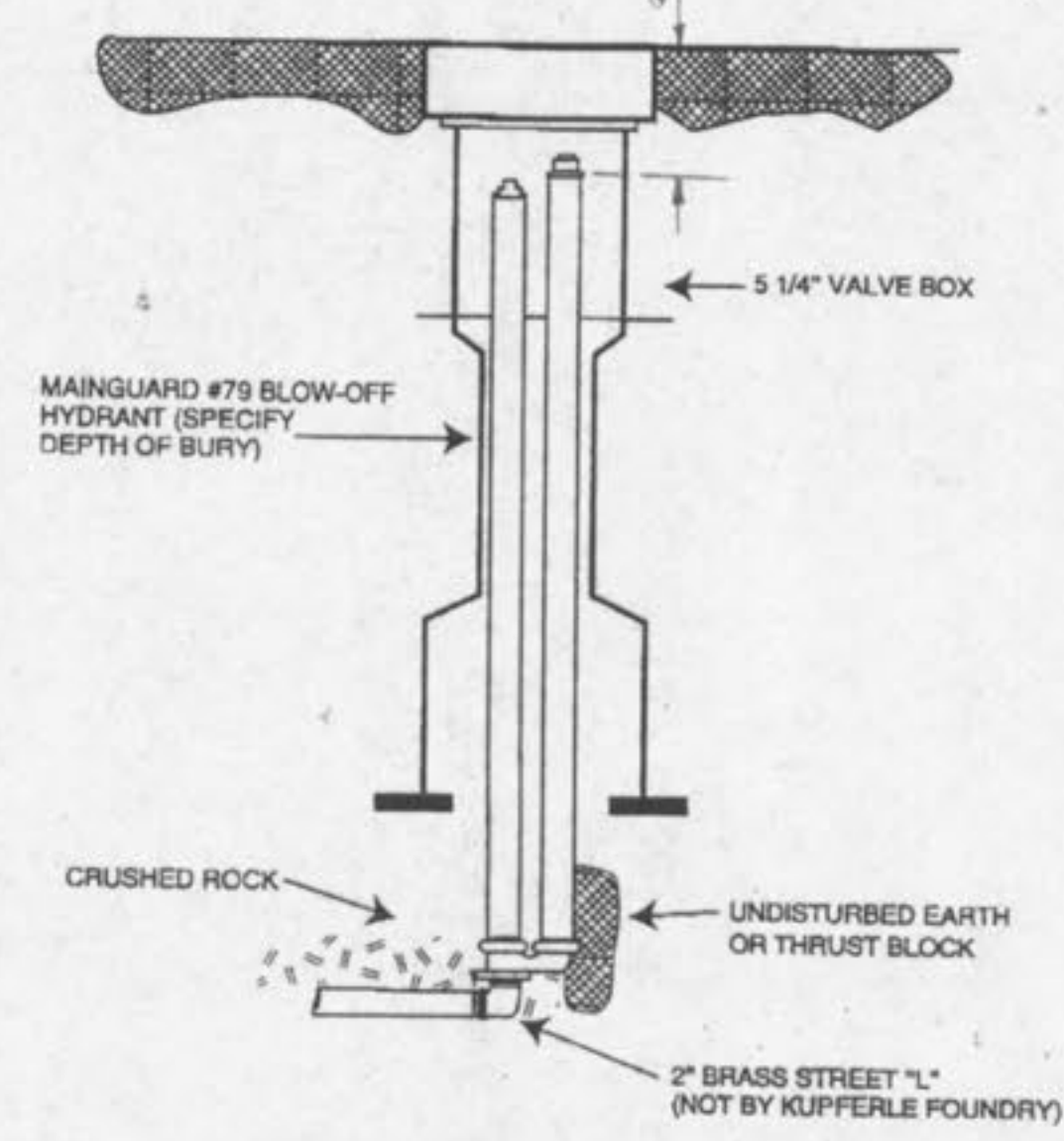
TYPICAL WATER MAIN INSTALLATION DETAILS
 NOT TO SCALE



GATE VALVE W/THRUST BLOCK
 NOT TO SCALE



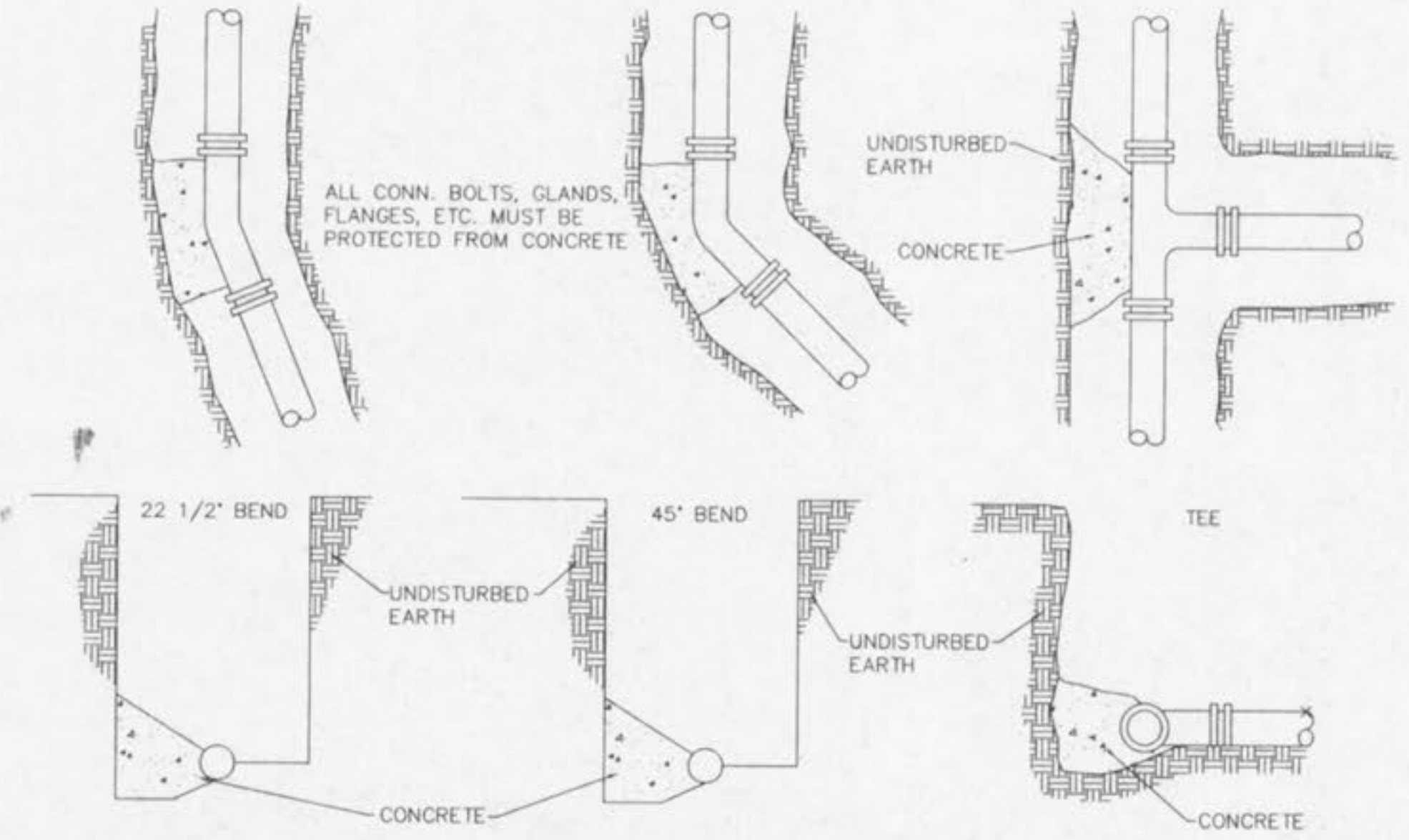
TYPICAL WATER AND SEWER SEPARATION
 NOT TO SCALE



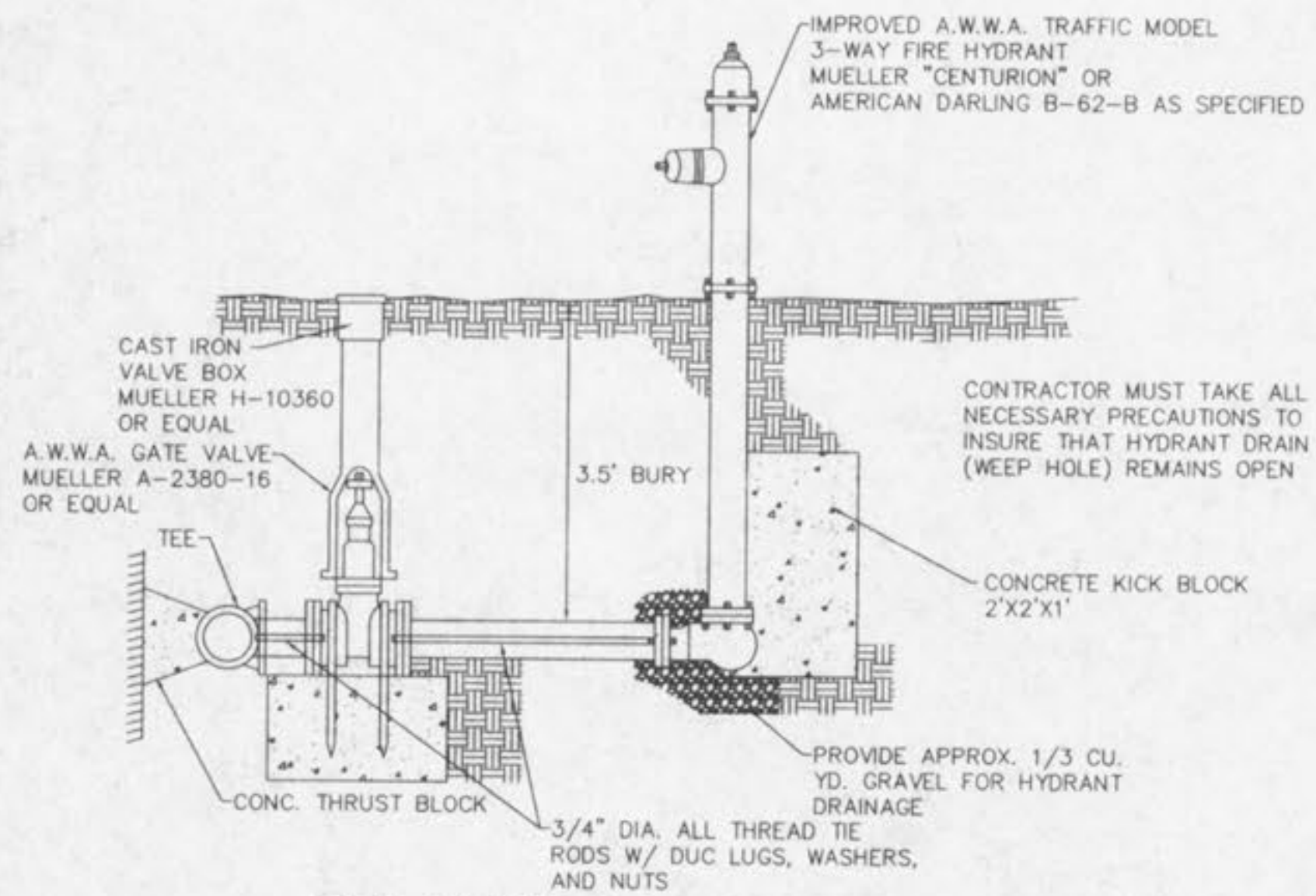
Written Specification
 Blow-off Hydrants shall be non-freezing, self draining type, with an overall length of _____. Set underground in a 5 1/4" valve box, these hydrants will be furnished with a 2" FIP inlet, a non-turning operating rod, and shall open to the left. All of these working parts shall be of bronze-to-bronze design, and shall be serviceable from above grade with no digging. The outlet shall be a 2" FIP coupling with plug, as manufactured by Kupferle Foundry Co., St. Louis, MO, or approved equal.

(Specify overall length 6" shorter than normal depth of bury.)

BLOWOFF ASSEMBLY



TYPICAL THRUST BLOCK DETAILS
 NOT TO SCALE



FIRE HYDRANT INSTALLATION DETAIL
 NOT TO SCALE

MAIN SIZE (I.D.)	MIN. THRUST BLOCK BEARING DIMENSIONS TO BEAR AGAINST UNDISTURBED EARTH				
	45' BEND	22 1/2' BEND	TEE	VALVE	CROSS
2"	.5' X 1'	.5' X 1'	.5' X 1'	.5' X 1'	.5' X 1'
4"	1' X 1'	1' X 1'	2' X 1'	2' X 1'	1' X 1'
6"	1.5' X 1'	1' X 1'	2' X 1'	2' X 1'	1' X 1'
8"	2' X 1'	1' X 1'	2' X 2.5'	2' X 2'	1' X 1.5'
10"	2' X 2.5'	1.5' X 2'	2' X 3.5'	2' X 3'	2' X 2'
12"	2' X 3.5'	1.5' X 2.5'	3' X 3.5'	3' X 3'	2' X 3'
16"	3' X 4'	2' X 3'	4' X 4.5'	3' X 4.5'	3' X 3.5'

E:\eng\9800plust\9800plust.dwg Thu Oct 26 05:56:05 2000 STA 26 .dk