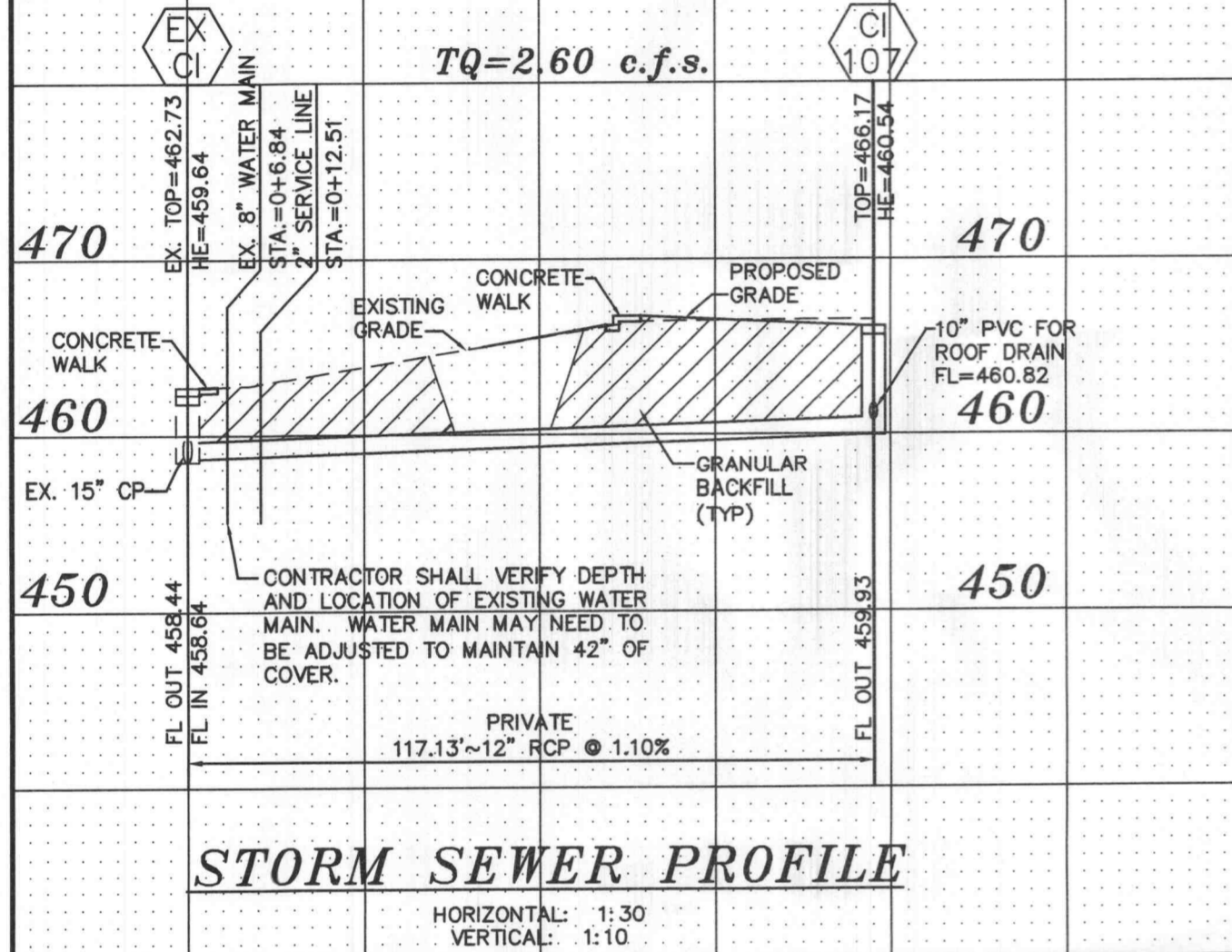


STORM SEWER PROFILE

STORM SEWER PROFILE

HORIZONTAL: 1:30
 VERTICAL: 1:10

HORIZONTAL: 1:30
 VERTICAL: 1:10



STORM SEWER PROFILE

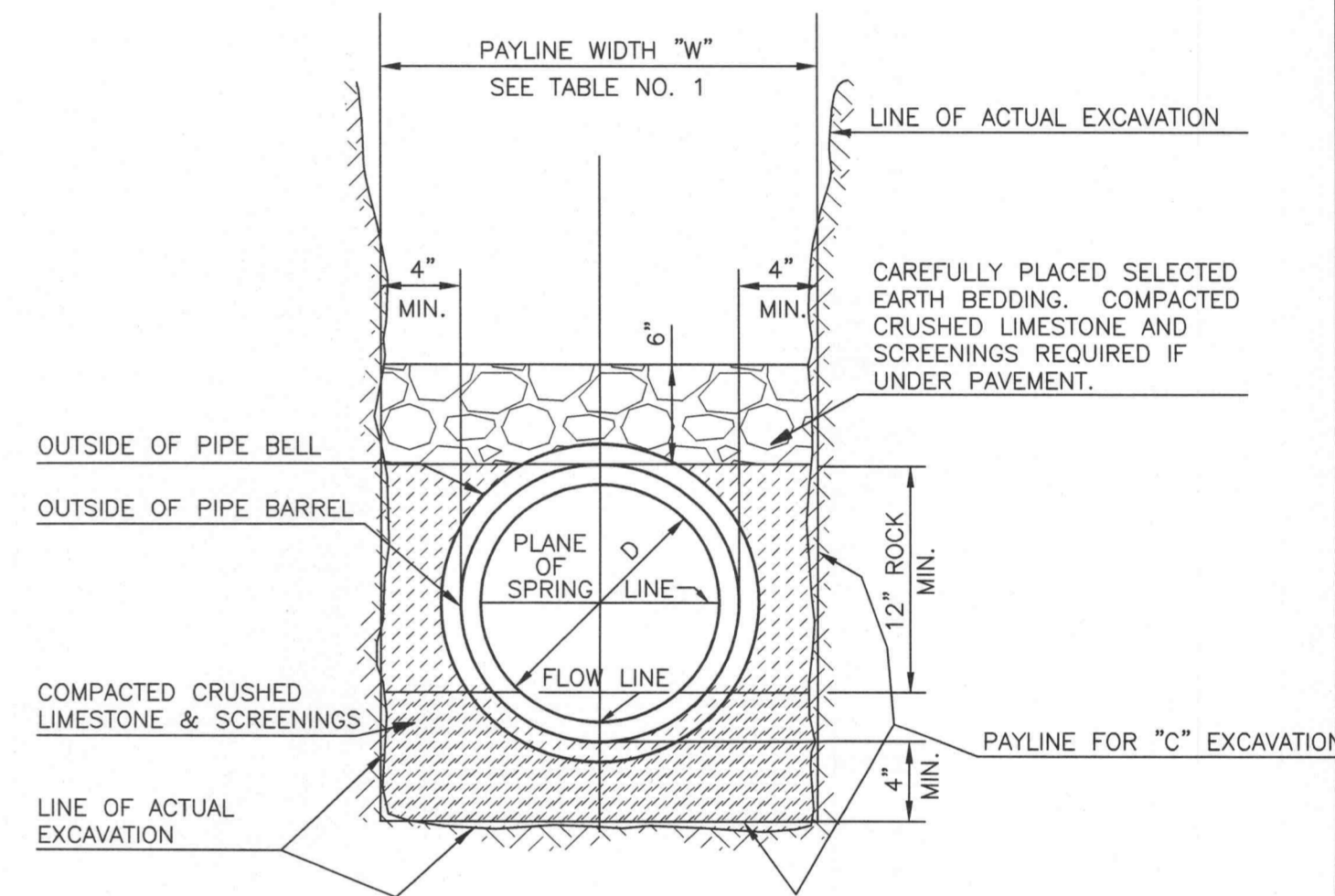
HORIZONTAL: 1:30
 VERTICAL: 1:10

BAX PROJECT NAME : DAMES PLAZA
 BAX PROJECT NO. : 98-10333G
 DESIGN DATE : 2-19-08
 DESIGNED BY : ALJ
 15 YEAR DESIGN STORM

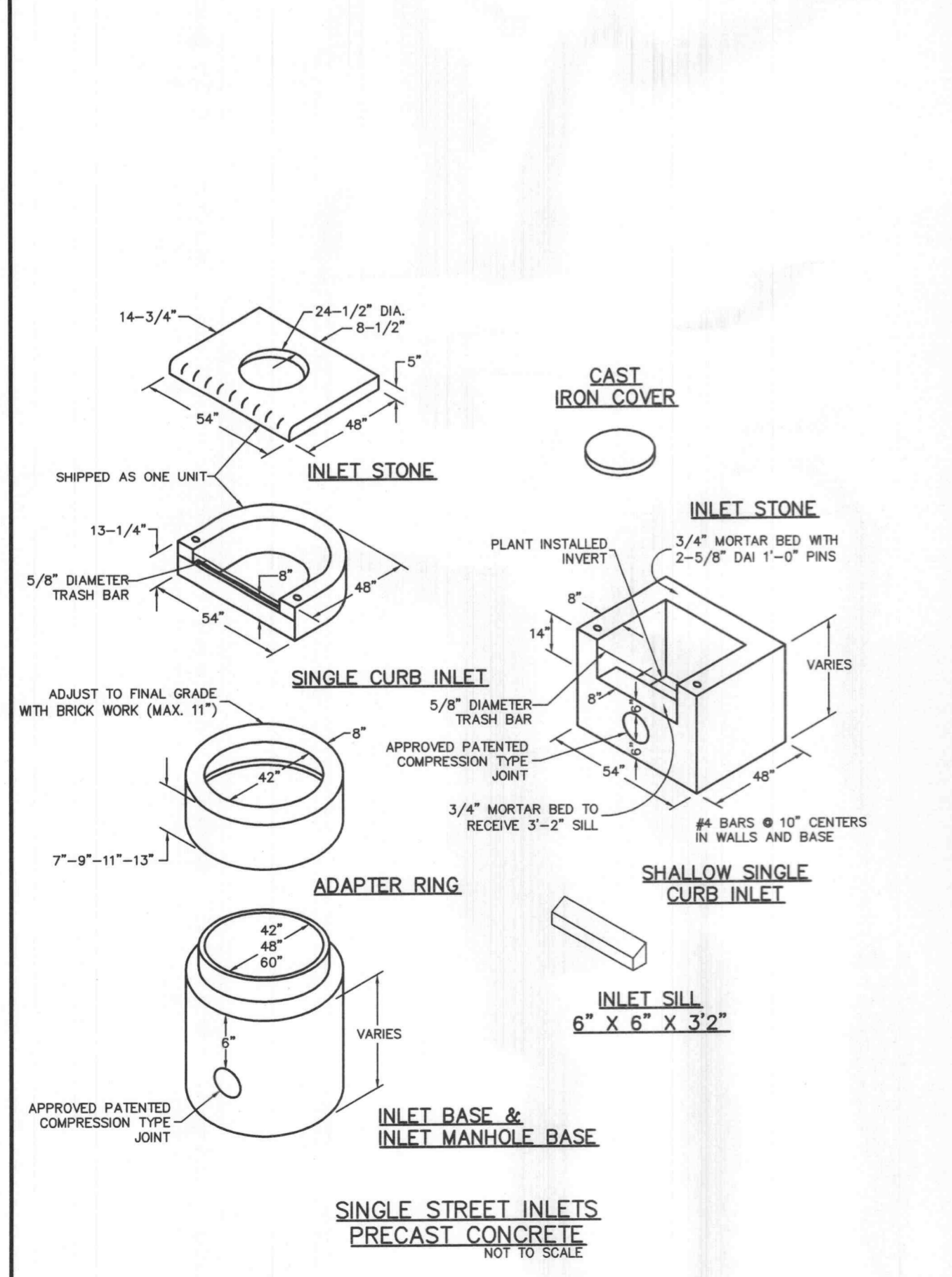
FILENAME: 10333G

UPP STR	LOW STR	L DIA	UPPER FL LN	LOWER FL LN	PS	UPPER HY GR	DEPTH HY GR	LOWER HY EL	HYDR LOSS	FR HEAD	VEL	VEIL HEAD	JUNC LOSS	TURN LOSS	CURVE INL LOSS	DR AREA	PI	Q	TQ	PIPE CAP	LINE NUMBER	REMARKS
CI 107	EX CI	117	12	459.93	458.64	1.10	466.17	5.63	460.54*	459.64	.00030	0.62	3.31	0.17	0.00	0.00	0.00	0.00	2.60	3.74	1	HW=459.64
GI 106	CI	103	65	12	461.53	460.65	1.35	464.86	3.07	461.79*	461.65	.00030	0.02	0.01	0.00	0.00	0.00	0.00	0.66	4.14	2	
CI 105	GI	104	77	12	459.71	458.87	1.10	464.70	4.55	460.15*	459.87	.00170	0.13	1.86	0.05	0.05	0.00	0.00	1.46	3.73	3	
GI 104	CI	103	98	12	458.67	457.70	1.10	464.18	4.98	459.20*	458.70	.00340	0.30	2.64	0.11	0.09	0.00	0.00	2.07	3.73	4	
CI 103	EX CI	102	170	12	457.50	455.53	1.10	466.94	7.89	458.65	456.74	.00970	1.64	4.46	0.31	0.27	0.05	0.00	3.50	3.74	5	
CI 102	EX CI	62	18	455.43	455.14	0.47	465.56	8.82	456.74	456.64	.00150	0.10	2.34	0.08	0.00	0.00	0.00	0.00	4.13	7.18	6	HW=456.64

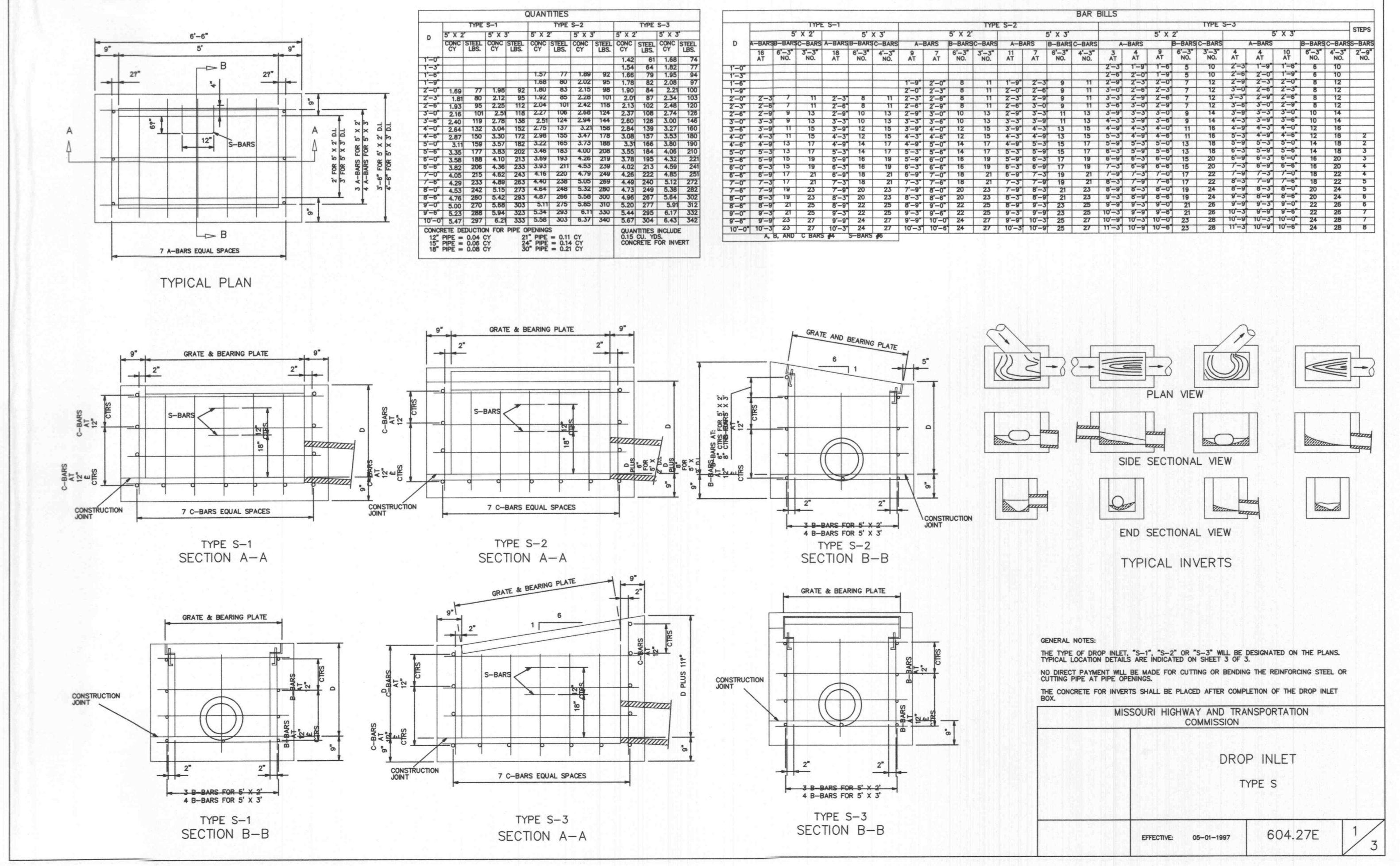
* INDICATES CRITICAL DEPTH



PIPE BEDDING CLASS "C" (MODIFIED FOR REINFORCED CONCRETE PIPE)



SINGLE STREET INLETS PRECAST CONCRETE

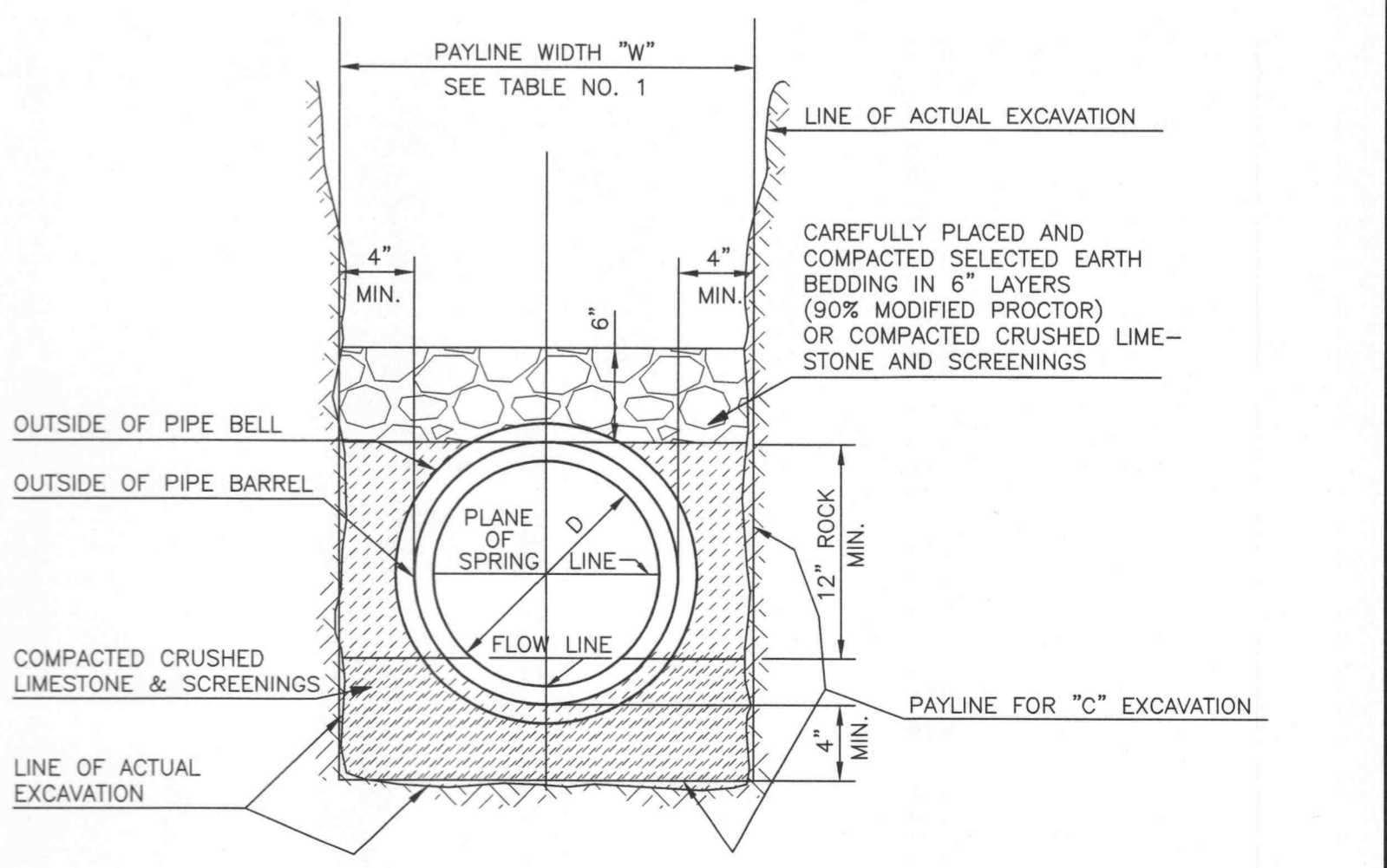


DROP INLET TYPE S

ROUND PIPE

Inside Diameter of Pipe (Inches)	Payline Width of Trench (Inches)	Payline Width of Trench (Feet)	Pay-volumes cu. ft. per ft. Concrete Encasement
4	28	2.33	3.20
6	28	2.33	3.46
8	28	2.33	3.70
10	28	2.33	3.86
12	28	2.33	3.98

TABLE NO. 1 PAYLINE WIDTHS OF TRENCH AND PAY-QUANTITIES OF CONCRETE



PIPE BEDDING CLASS "C" (FOR ALL PIPE EXCEPT REINFORCED CONCRETE PIPE)

GENERAL NOTES:
 THE TYPE OF DROP INLET, "S-1", "S-2" OR "S-3" WILL BE DESIGNATED ON THE PLANS. TYPICAL LOCATOR DETAILS ARE INDICATED ON SHEET 10333-1.
 NO DIRECT PAYMENT WILL BE MADE FOR CUTTING OR BENDING THE REINFORCING STEEL OR CUTTING PIPE AT THE DRAWINGS.
 THE CONCRETE FOR INVERTS SHALL BE PLACED AFTER COMPLETION OF THE DROP INLET BOX.

MISSOURI HIGHWAY AND TRANSPORTATION COMMISSION

EFFECTIVE 06-01-1997 604.27E 1

E:\DWG\A10000PLUS\10333G-Dames Plaza\Constr\action\10333Gcon.dwg, profile(5), 3/11/2008 3:11:55 PM, Station 28 ALJ