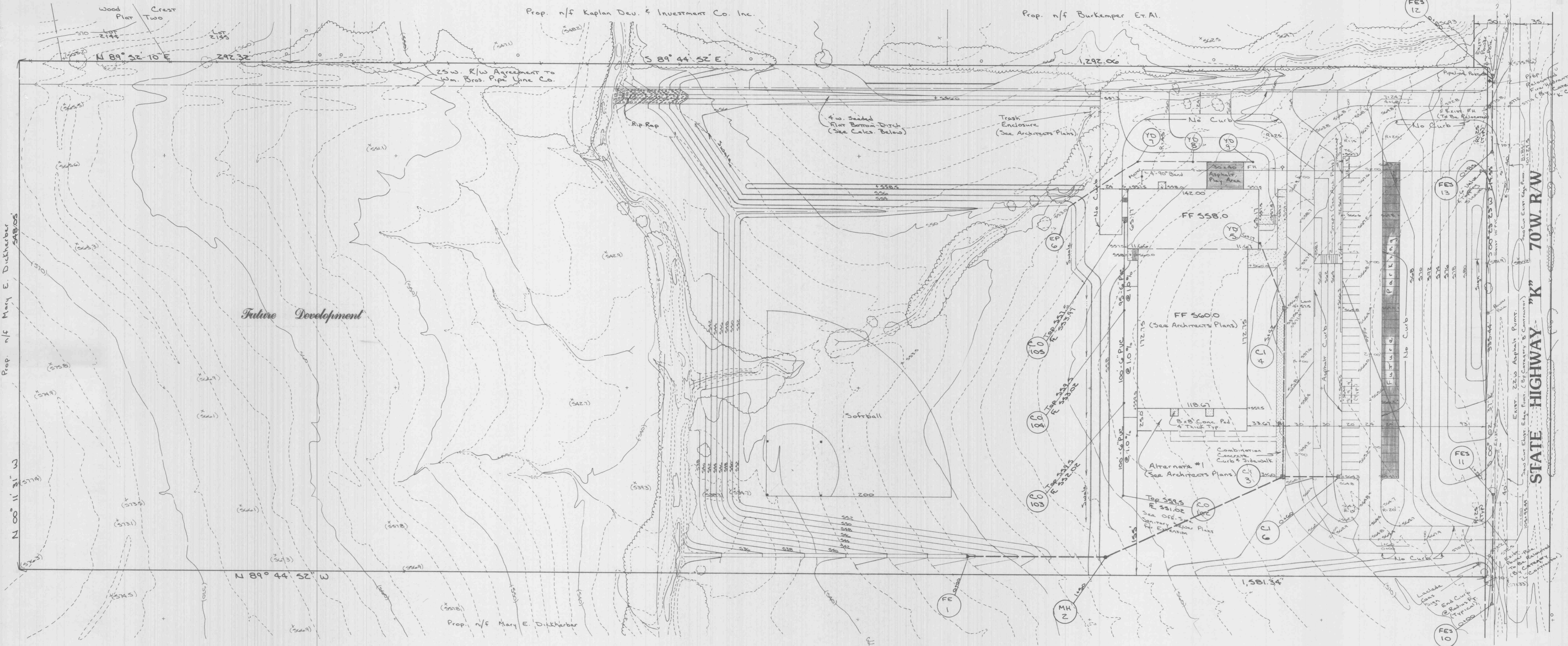
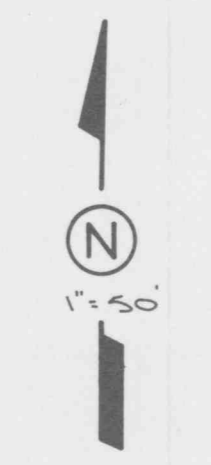


HANDICAP SIGN DETAIL  
(N.T.S.)  
(By Category "B" Contractor)

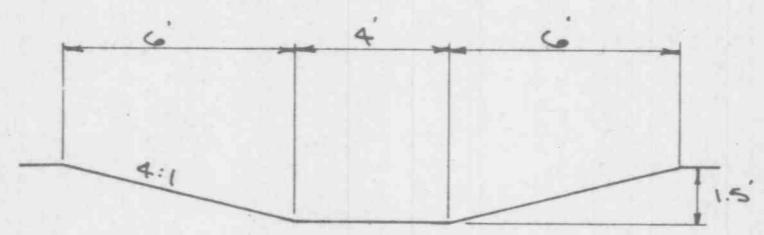


**STATE HIGHWAY ENTRANCE**

**ASPHALT SURFACE**  
8" Rolled Stone Base or 6" Type X (Black Base)  
3" Asphalt Top (Type C)  
Machine Laid  
Asphalt Curb (6" Vertical)

All entrances shall meet the specifications and installation requirements of the Missouri Highway & Transportation Department.

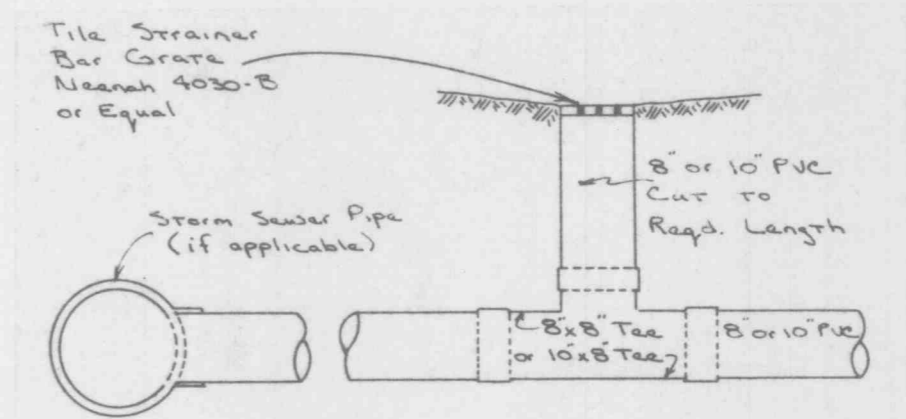
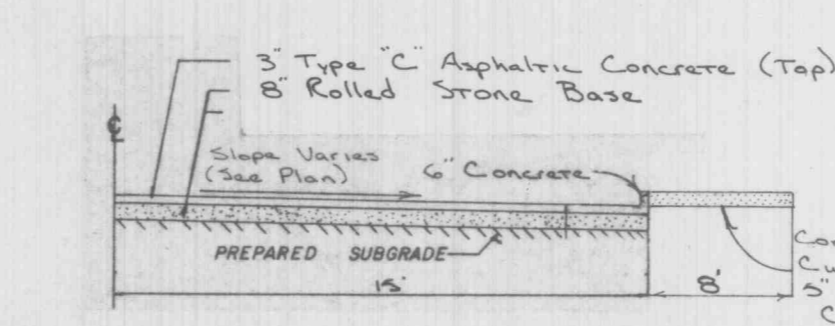
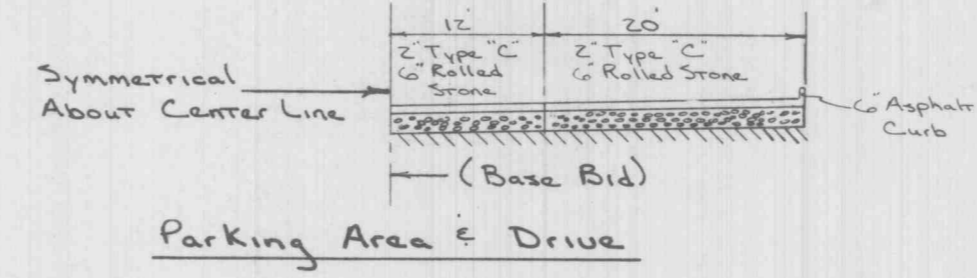
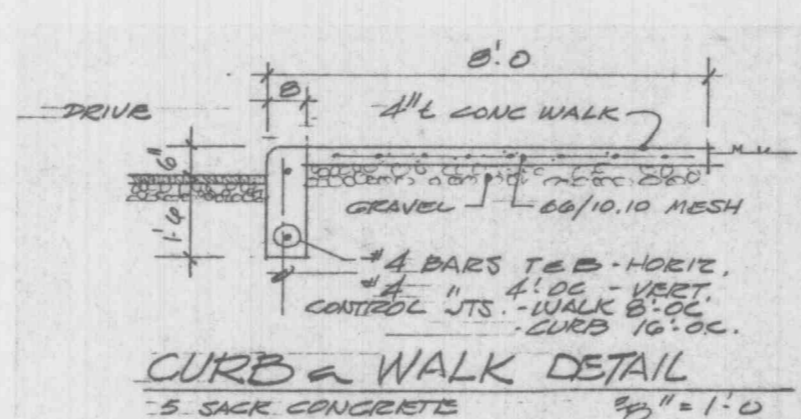
Contractor shall obtain permit from State Highway and Transportation Commission.



**Flat Bottom Ditch  
Detail & Calculations**

$1.00 / n (2.48)^{2/3} (5)^{5/2}$   
 $n = .05$   
 $a = 6 + 9 = 15$   
 $wp = 16.37$   
 $s = 0.75\%$

$V = 29.72 (94) (.087)$   
 $U = 2.44 fps$   
 $Q = 1.4$   
 $Q = 2.44 (1.5)$   
 $Q = 3.66 cfs$



**AREA DRAINS**

Stairs to be formed and poured by Category "C" Contractor.

All disturbed areas to be seeded, see specifications.

Engineers plans to be coordinated with Architectural, Mechanical and Electrical plans.

Water connection and appurtenant structures shall meet requirements of St. Charles County Water District #2.

Prop. n/f Mary E. Duthcher 5480.05

Prop. n/f Kaplan Dev. & Investment Co. Inc.

Prop. n/f Burkemper Et Al.

Future Development

STATE HIGHWAY "K" 70' W. R/W

Approximate Bid Yardage: 44,881 cy