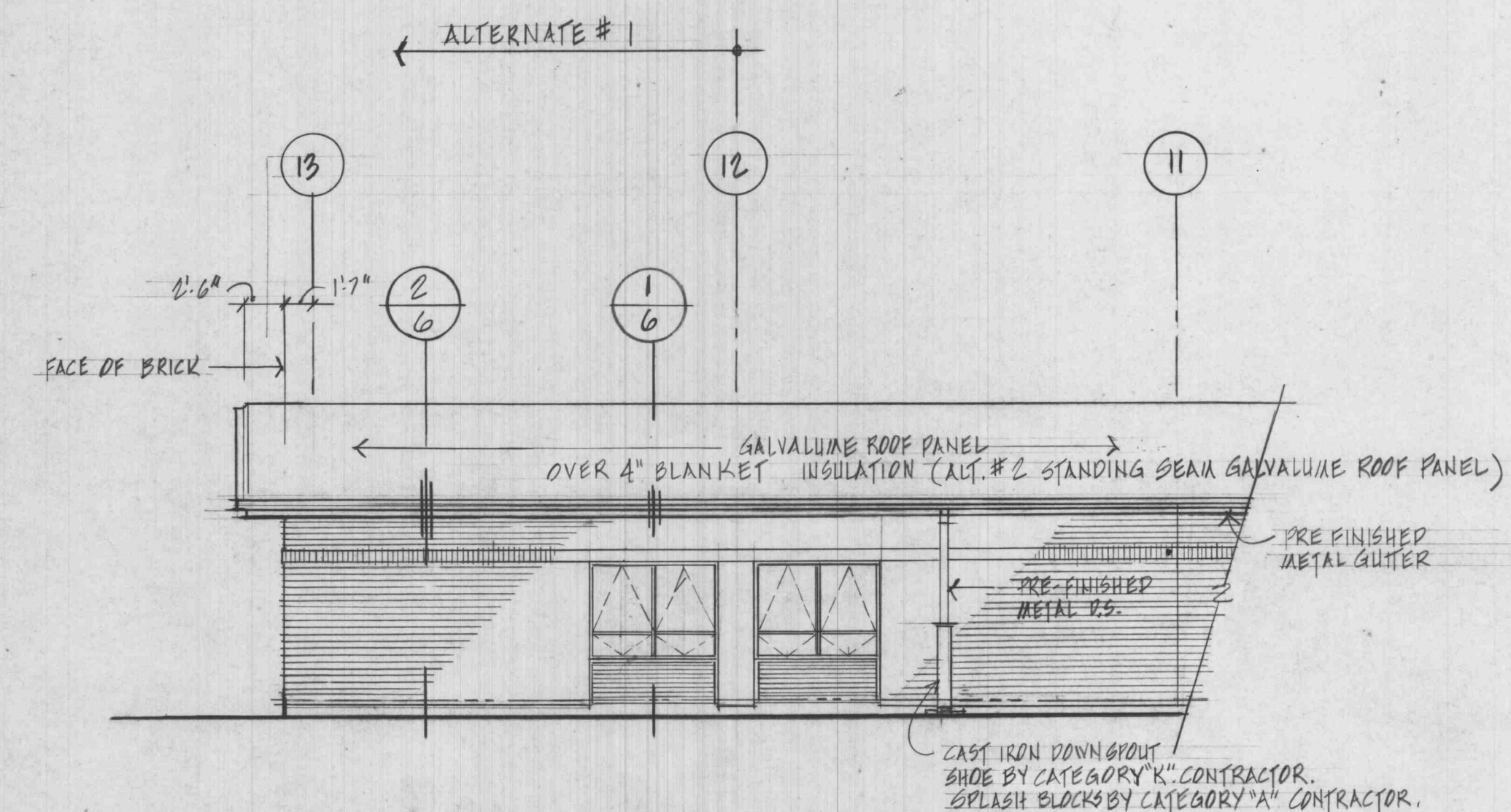
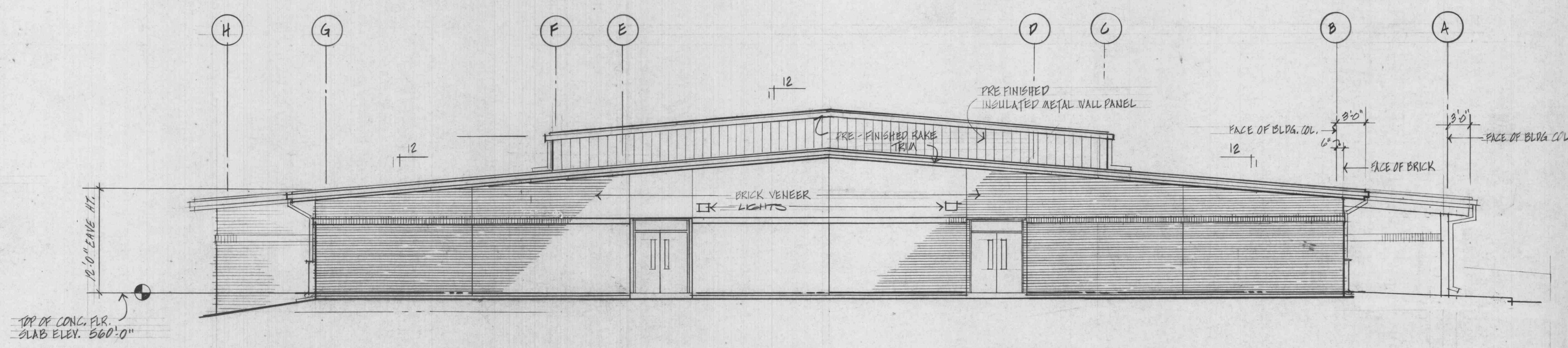


**EAST ELEVATION**  
SCALE 1/8" = 1'-0"

**GENERAL NOTE:**  
CANOPY SHOWN ON EAST ELEVATION & 2'-6" ROOF OVERHANG AS SHOWN ON ELEVATIONS SHALL BE BID AS ALTERNATE #3

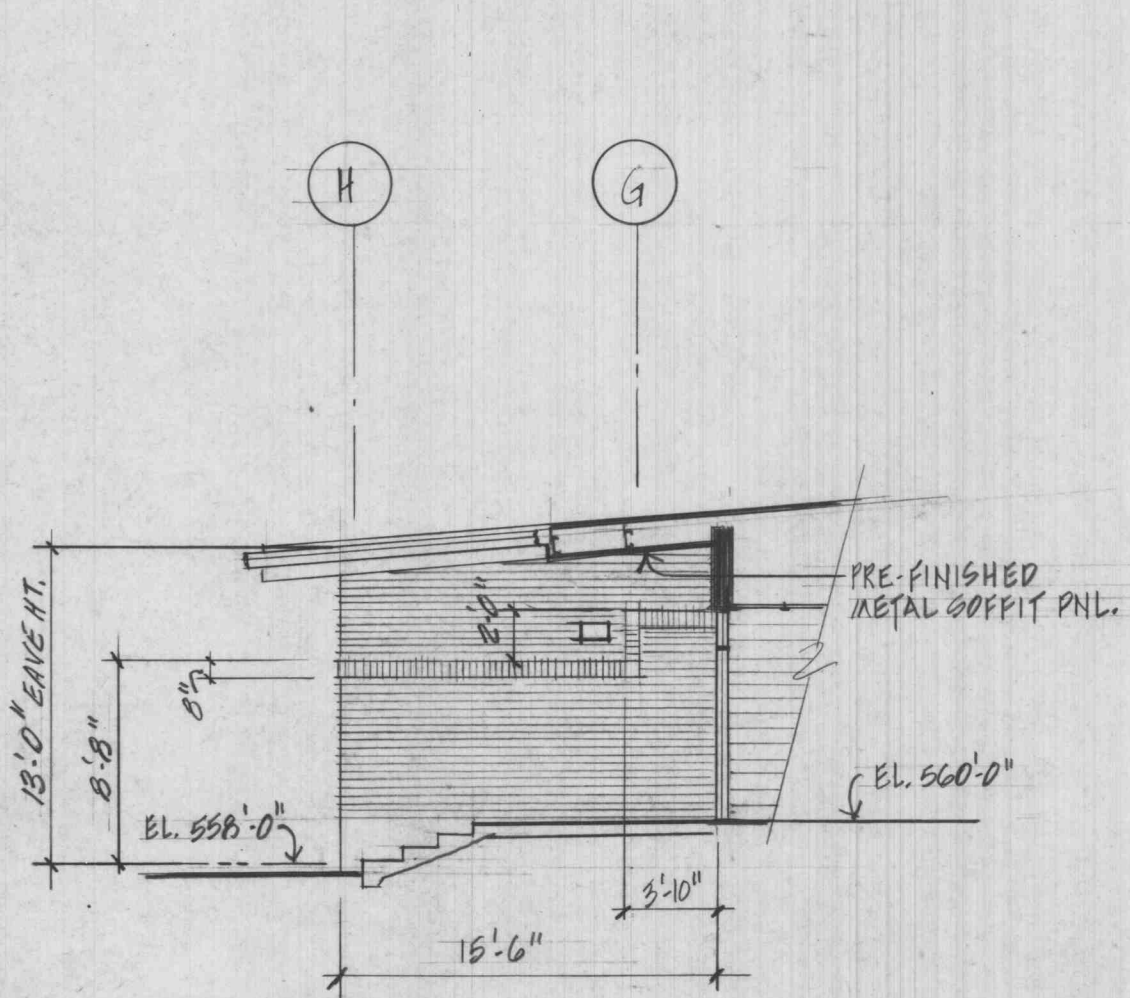


**PARTIAL EAST ELEVATION ALTERNATE #1**  
SCALE 1/8" = 1'-0"

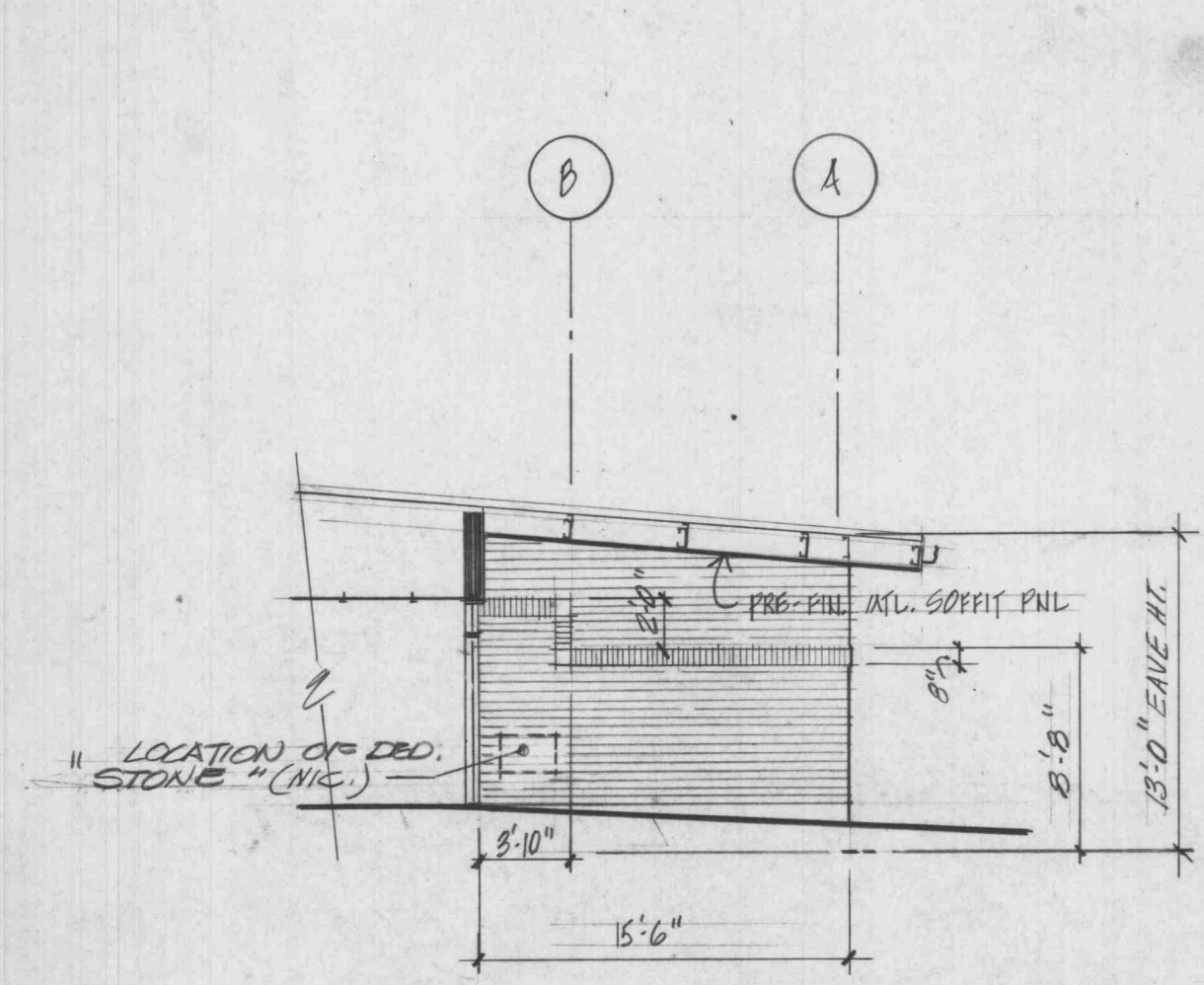


**SOUTH ELEVATION**  
SCALE 1/8" = 1'-0"

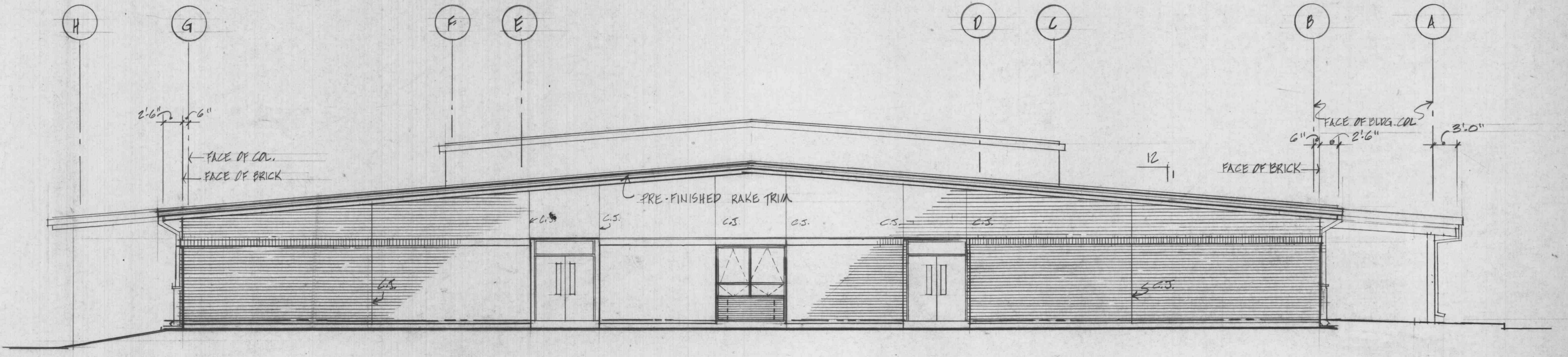
**NOTE:**  
ALL PRE-FINISHED TRIM, GUTTERS AND DOWNSPOUTS TO BE FURNISHED BY CATEGORY 'I' CONTRACTOR & INSTALLED BY CATEGORY 'A' CONTRACTOR (TYPICAL)



**PARTIAL SOUTH ELEVATION ALONG COL. LINE "A"**

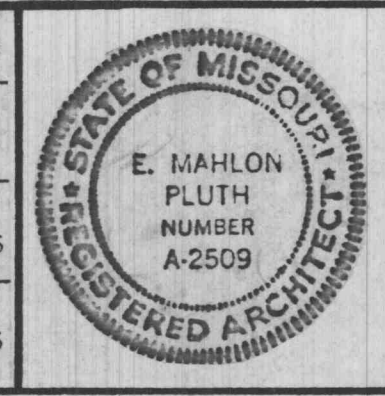


**PARTIAL SOUTH ELEVATION ALONG COL. LINE "A"**



**SOUTH ELEVATION ALTERNATE #1**  
SCALE 1/8" = 1'-0"

PICKETT RAY & SILVER	civil engineers
SOIL CONSULTANTS INC	soil engineers
L. WEINTRAUB & ASSOC	structural engineers
THOMAS BERKELEY	mechanical engineers



**the DMA corporation**  
Design & Management Associates

314-946-2060      202 Transit Street      St. Charles, Mo. 63301

**NEW ELEMENTARY SCHOOL**  
ft. zumwalt school district  
o'fallon missouri

ELEVATIONS

Revisions:		Job No. 602108
△	△	<b>A3</b>
△	△	
△	△	
△	△	
		Date: