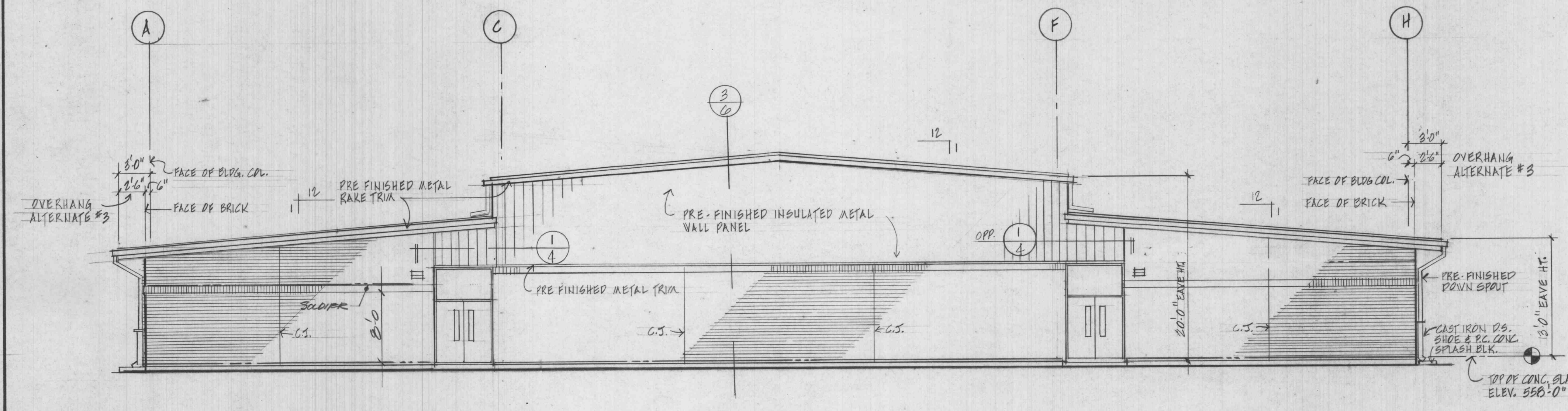
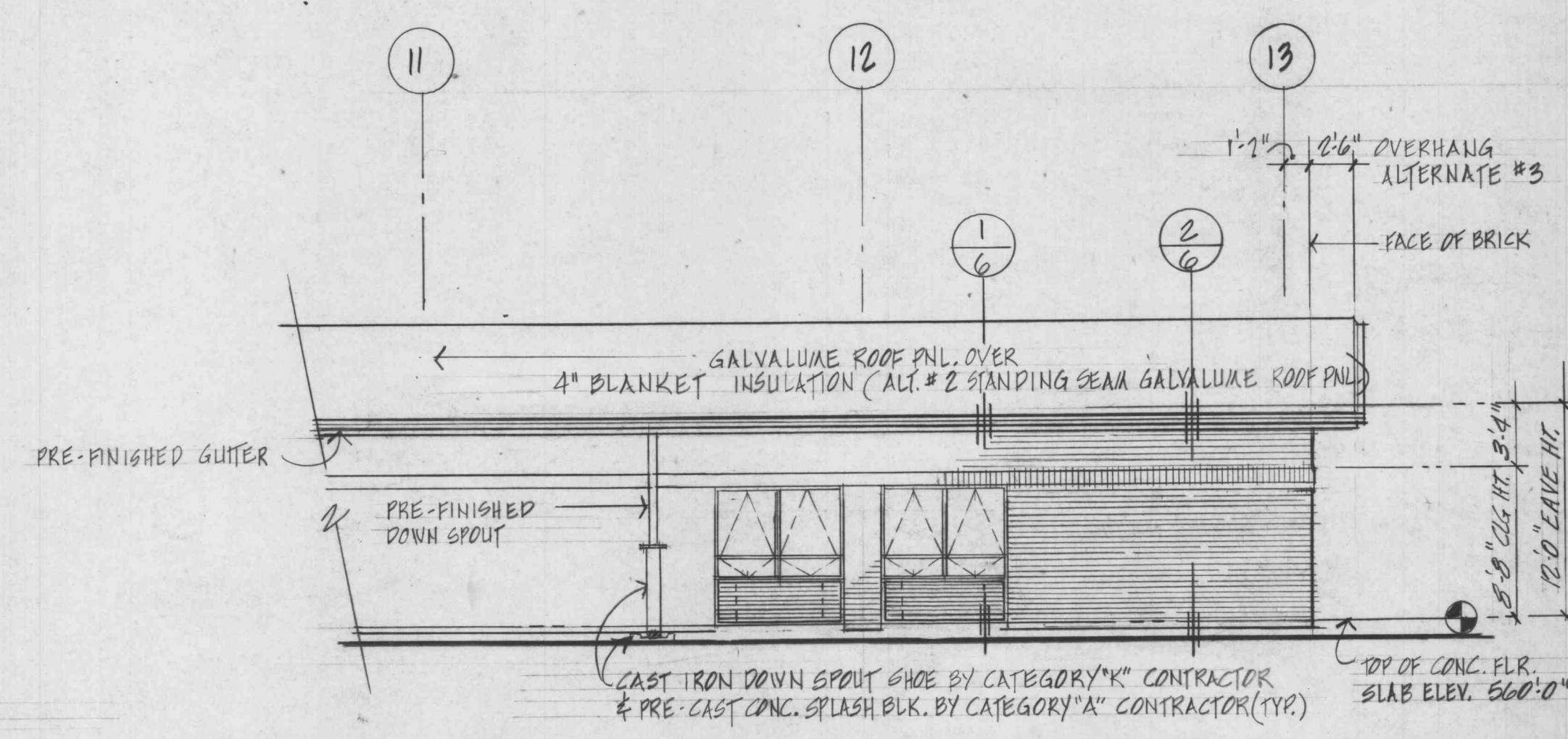


WEST ELEVATION
SCALE 1/8" = 1'-0"

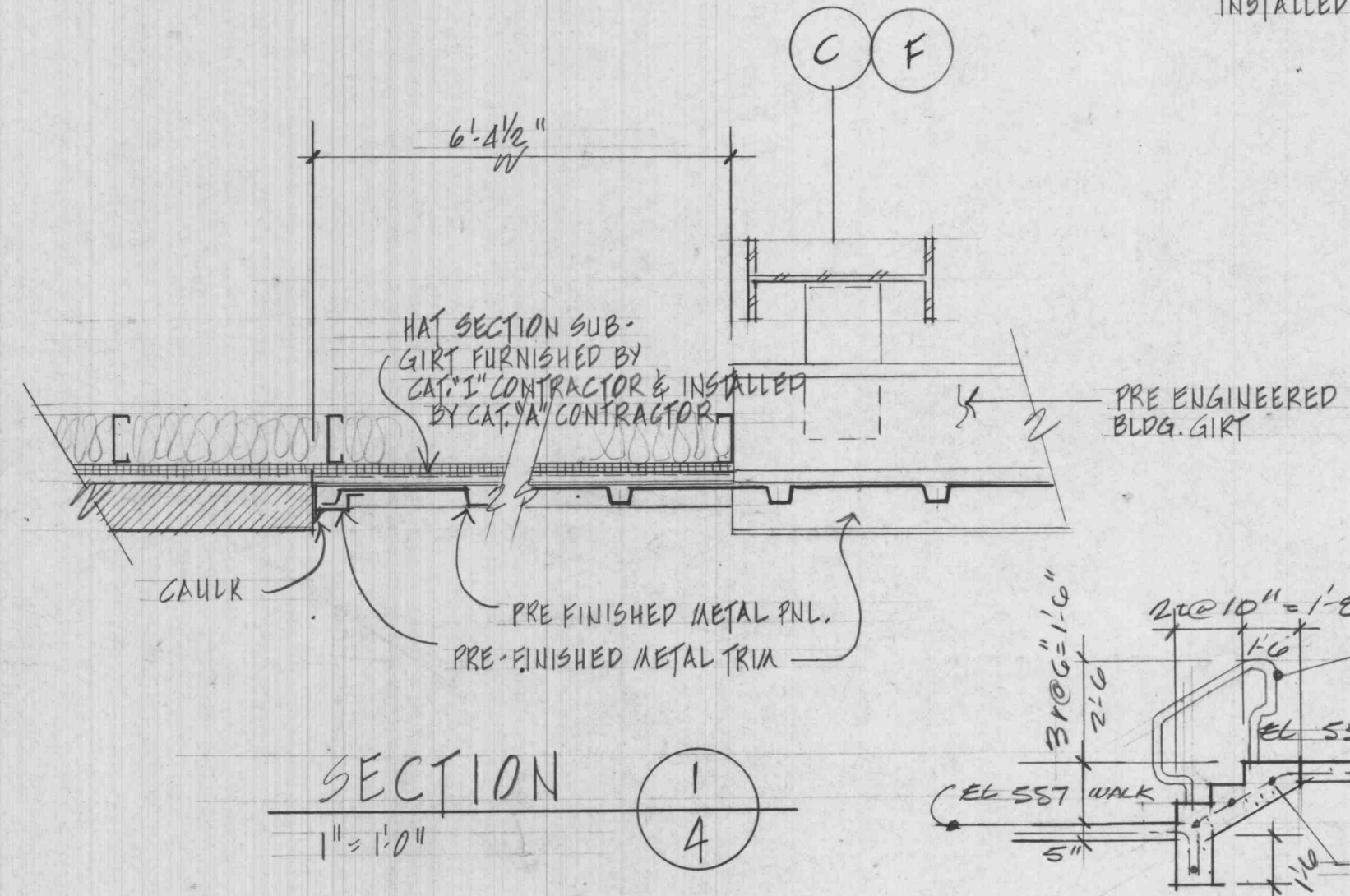


NORTH ELEVATION
SCALE 1/8" = 1'-0"

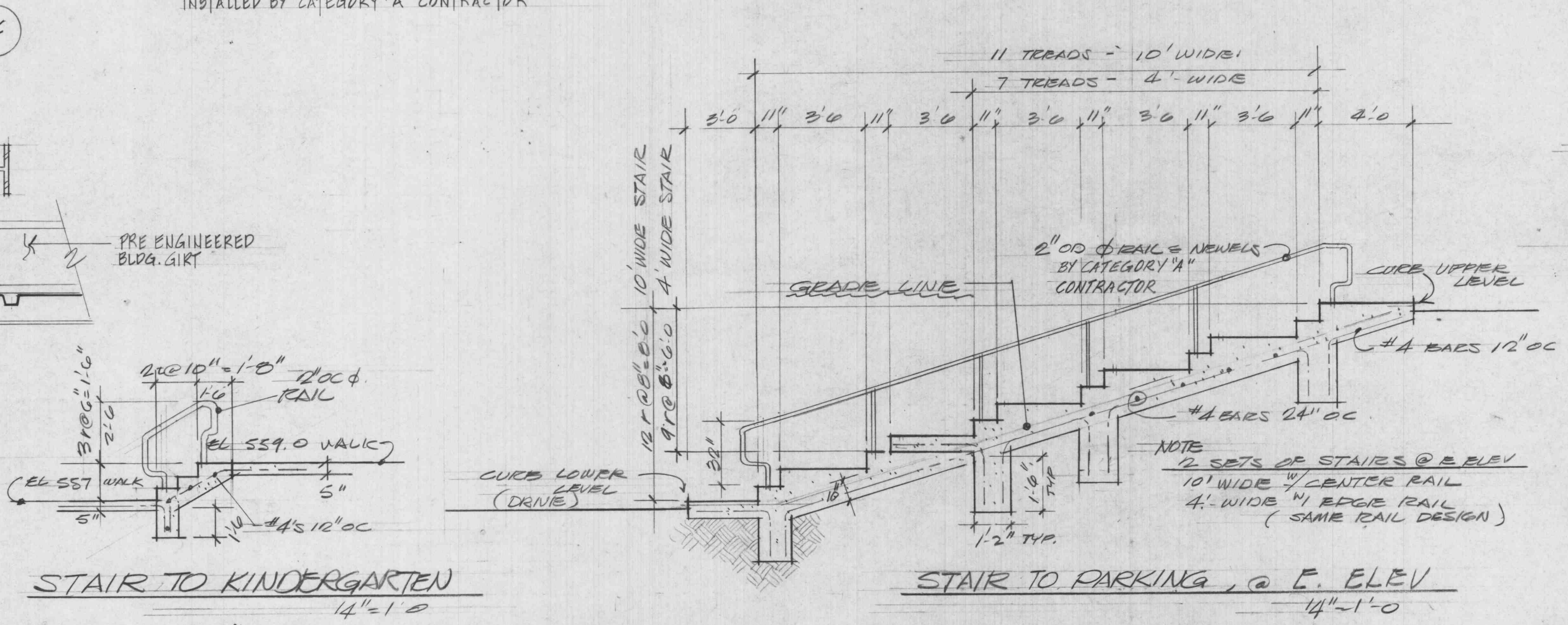
NOTE:
ALL PRE-FINISHED TRIM, GUTTERS AND DOWNSPOUTS TO BE FURNISHED BY CATEGORY "I" CONTRACTOR AND INSTALLED BY CATEGORY "A" CONTRACTOR



PARTIAL WEST ELEVATION - ALTERNATE #1
SCALE 1/8" = 1'-0"

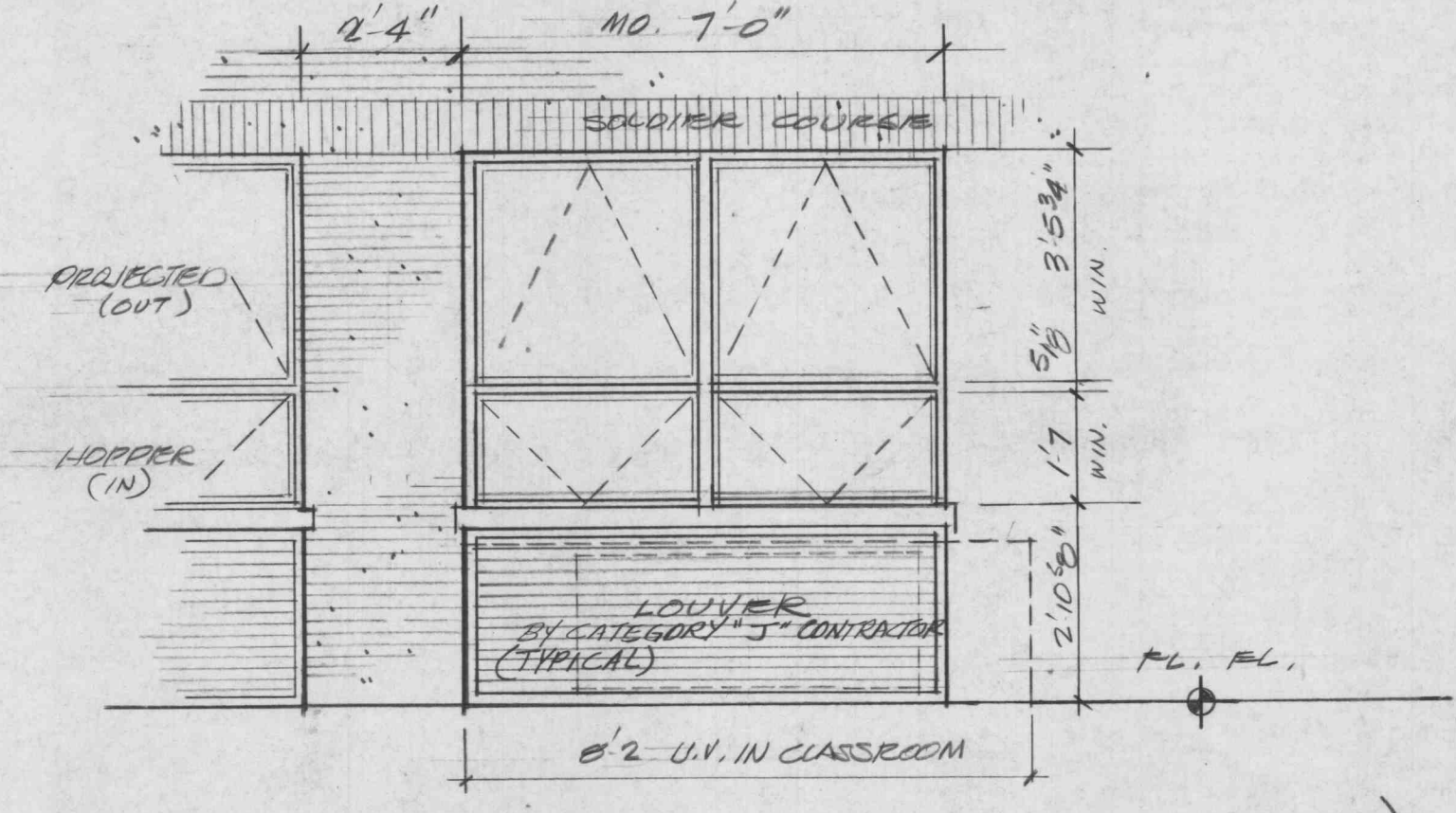


SECTION
1/4" = 1'-0"



STAIR TO KINDERGARTEN
1/4" = 1'-0"

STAIR TO PARKING @ F. ELEV
1/4" = 1'-0"



TYPICAL WINDOW (CLASSRM.)
1/4" = 1'-0" VERTICAL SECTION SEE -A6

PICKETT RAY & SILVER	civil engineers
SOIL CONSULTANTS INC	soil engineers
L. WEINTRAUB & ASSOC	structural engineers
THOMAS BERKELEY	mechanical engineers



the DMA corporation
Design & Management Associates

314-946-2060 202 Transit Street St. Charles, Mo. 63301

NEW ELEMENTARY SCHOOL
ft. zumwalt school district
o'fallon missouri

ELEVATIONS
STAIR DETAILS

Revisions:		job No. 608108
△	△	A4
△	△	
△	△	
△	△	
Date: 7-7-86		Copyright DMA Corporation