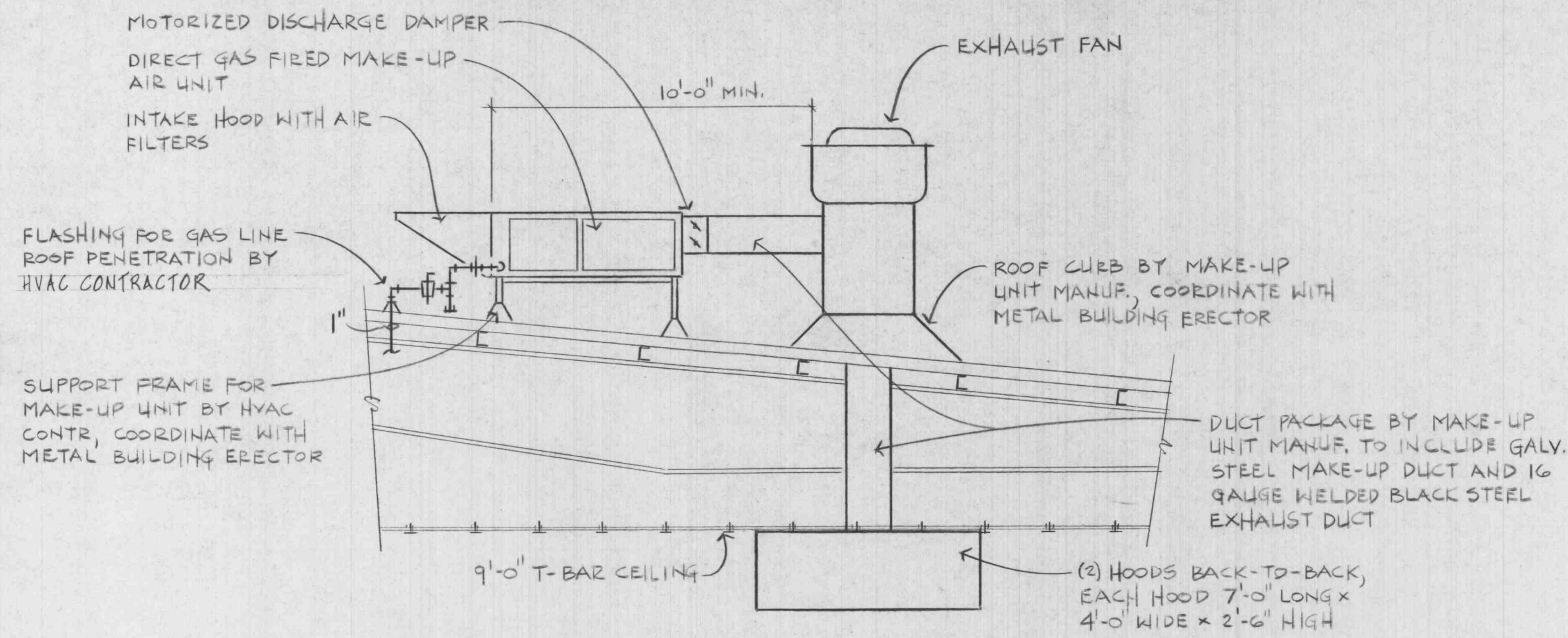


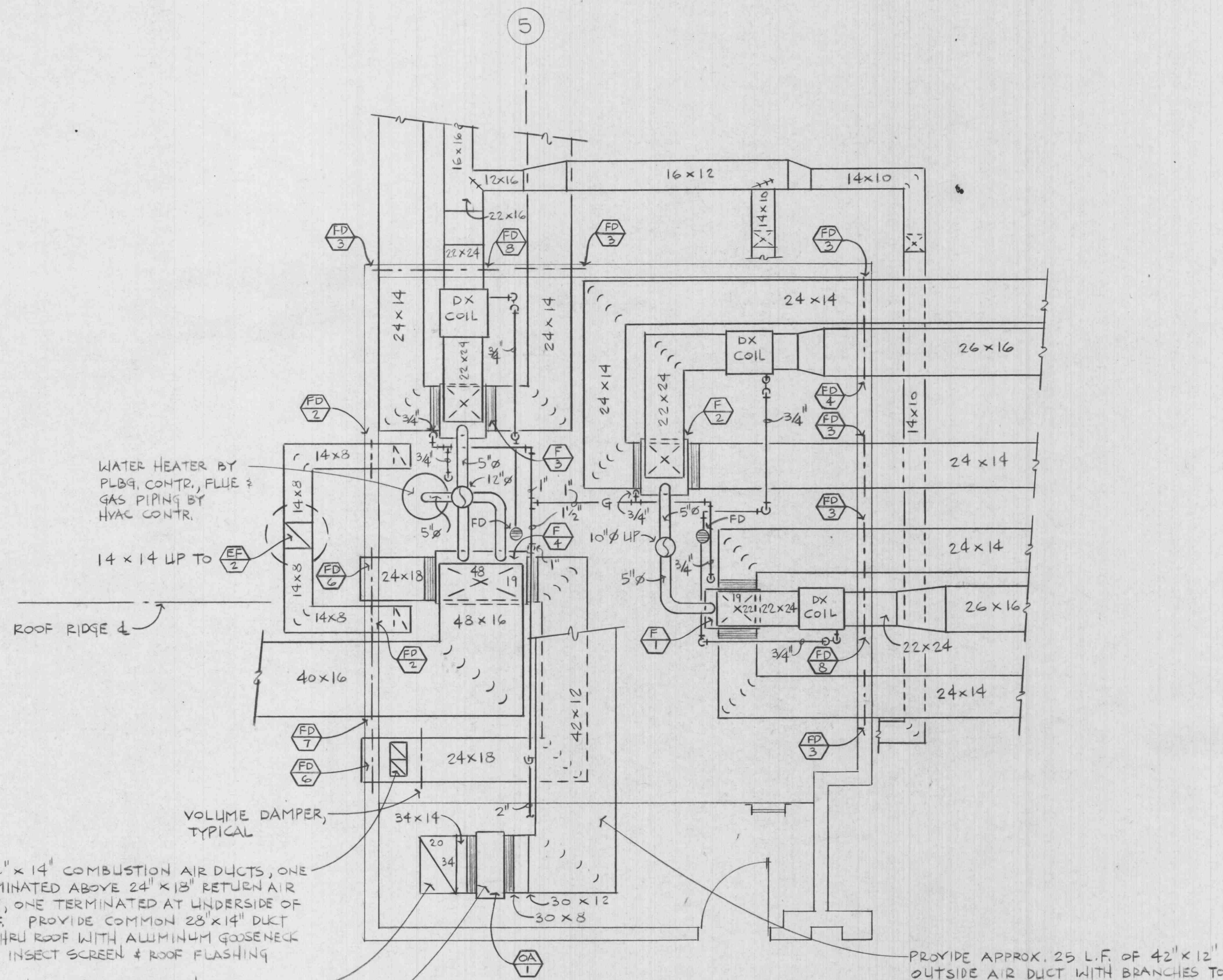
**KITCHEN EQUIP. GAS CONNECTIONS**

ITEM	EQUIP	CFH	PIPE SIZE
1	KETTLE	100	1/2"
2	CONV. OVENS	162	3/4"
3	RANGE	270	3/4"
4	FRYER	120	1/2"
5	FRYER	120	1/2"
6	DISHWASHER	23	1/2"
		795	

**GAS PIPING DETAIL**  
NO SCALE



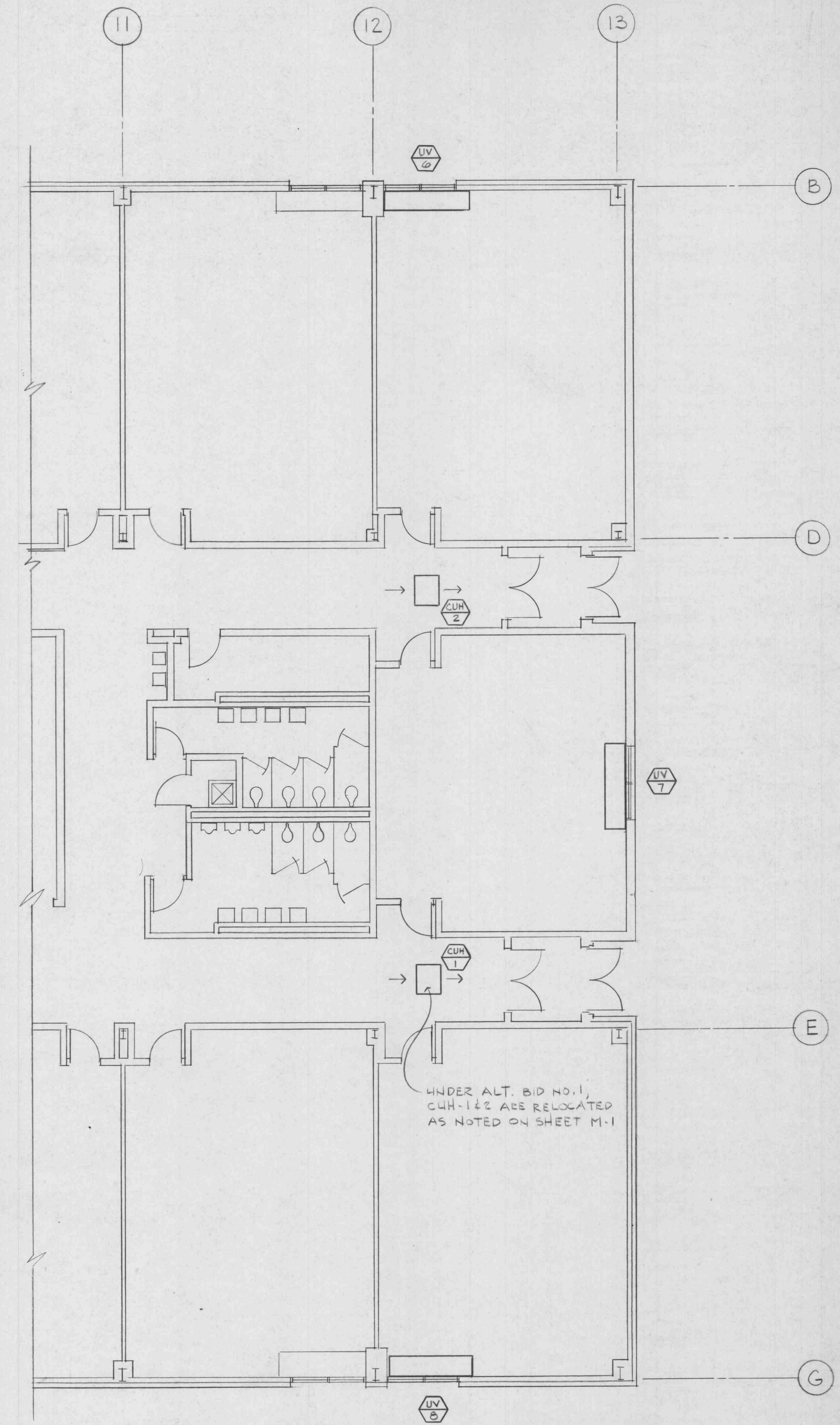
**SECTION 1**  
SCALE: 1/4" = 1'-0" M-2



**MEZZANINE HVAC PLAN**

SCALE: 1/4" = 1'-0"

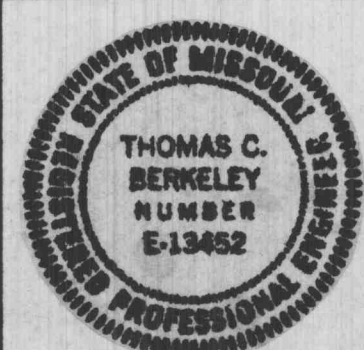
- NOTES: 1. PROVIDE DIRT LEG, UNION & GAS COCK AT EACH GAS APPLIANCE  
 2. PROVIDE FLEXIBLE DUCT CONNECTION AT INLET & OUTLET OF F-1, 2, 3, 4 & OA-1  
 3. SET EACH FURNACE ON (4) 2" X 2" X 5/16" THICK NEOPRENE PADS  
 4. PROVIDE 3/4" COND. DRAIN FROM F-1, 2, 3 TO F.D.



**ALTERNATE BID #1 HVAC FLOOR PLAN**

SCALE: 1/8" = 1'-0"

PICKETT RAY & SILVER	civil engineers
SOIL CONSULTANTS INC	soil engineers
L. WEINTRAUB & ASSOC	structural engineers
THOMAS BERKELEY	mechanical engineers



**the DMA corporation**  
 Design & Management Associates  
 314-946-2060 202 Transit Street St. Charles, Mo. 63301

**NEW ELEMENTARY SCHOOL**  
 ft. zumwalt school district  
 o'fallon missouri

ALTERNATE #1  
 HVAC FLOOR  
 PLAN & DETAILS

Revisions:	
△	△
△	△
△	△
△	△

Job No. 602108  
**M-2**  
 Date: 7-7-86  
 Copyright DMA Corporation