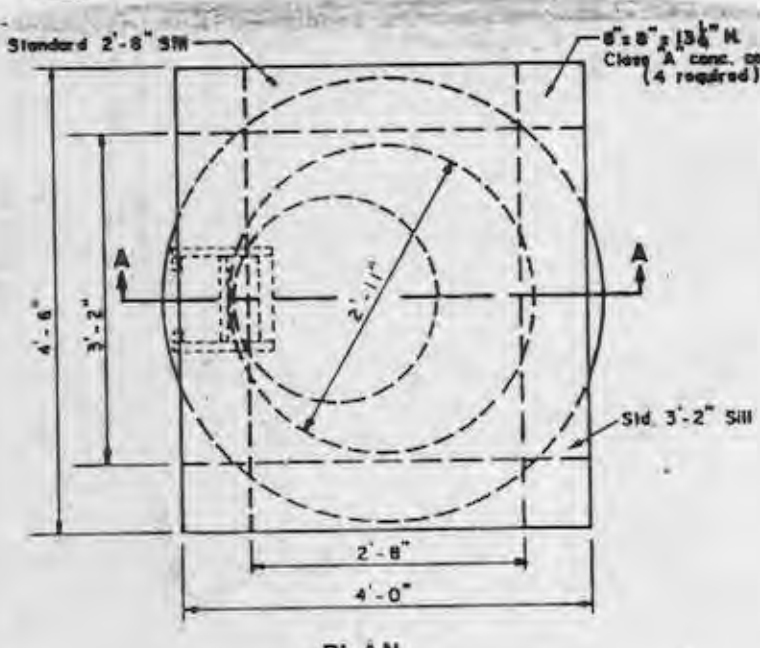
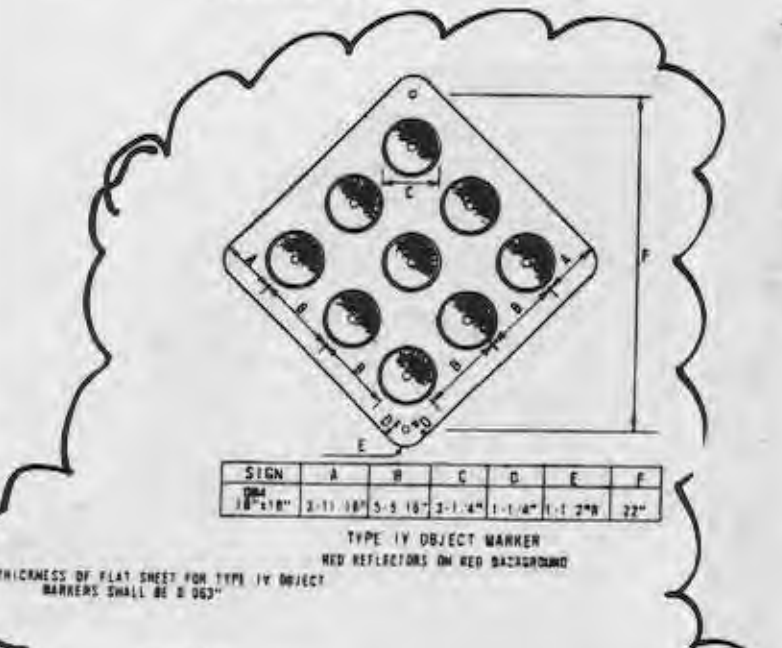
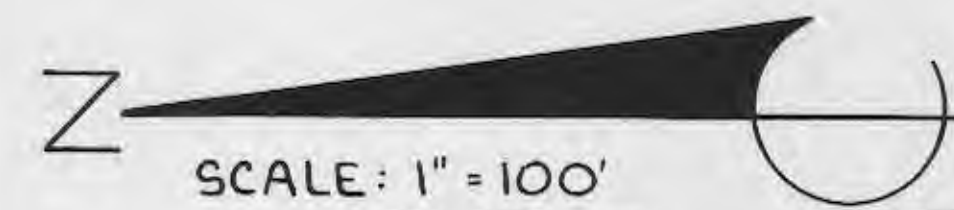


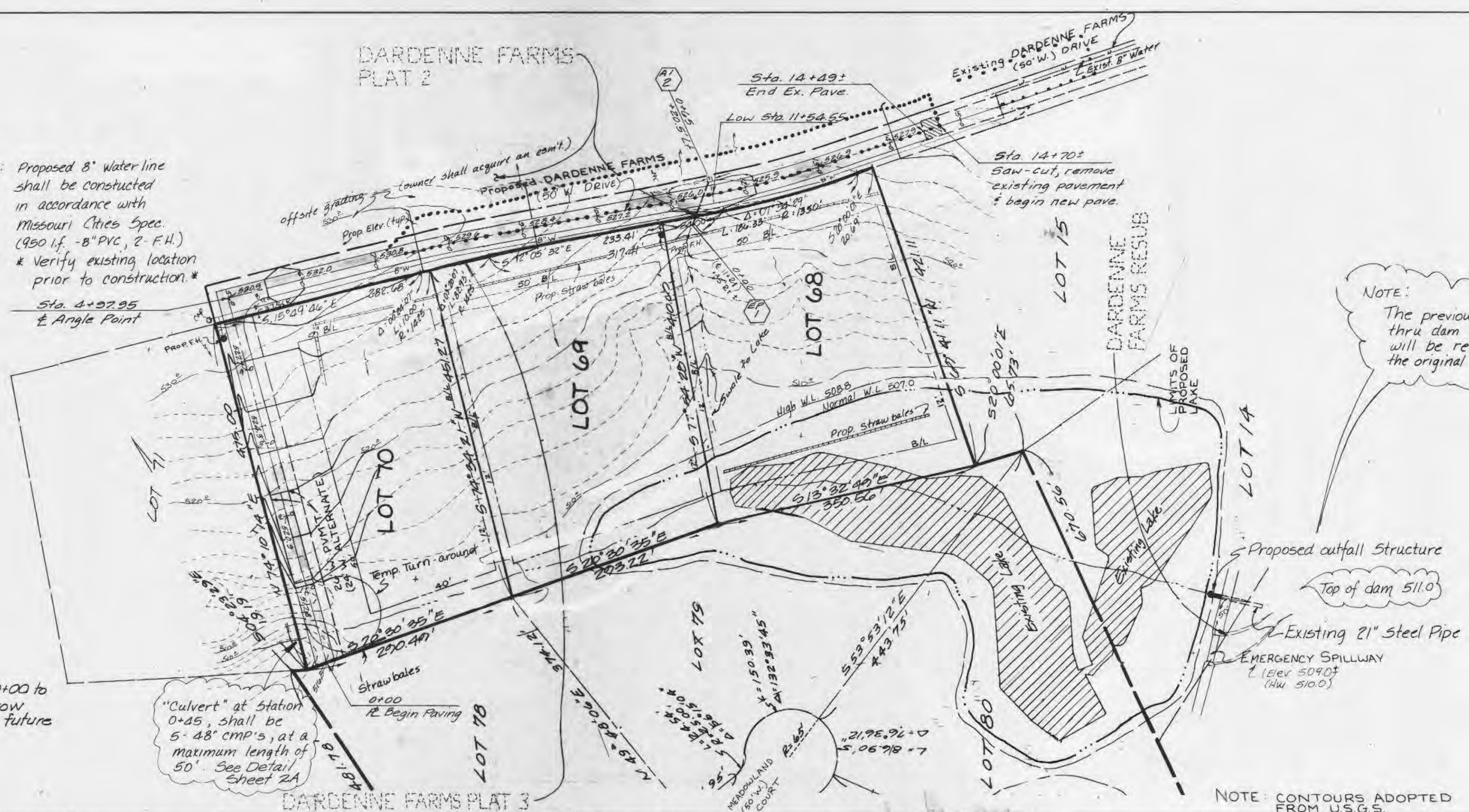
- Rev. 10-26-88 Proposed W.L. Tds
- Rev. 11-8-88 Notes, ditch Tds
- Rev. 12-1-88 EX. + Prop. GRADES STREET PROFILE
- Rev. 3-22-89 Relocate Drive & adjust profiles accordingly Tds, DW/D
- Rev. 4-14-89 CITY OF O'FALLON COMMENTS
- Rev. 5-1-89 Culvert info. Tds
- Rev. 5-9-89 Comments per City of O'Fallon, dated 5/1/89
- Rev. 7-12-89 Culvert E.S.



Note
Three (3) Hazard markers shall be installed at the end of pavement, see note 15 sheet 1 of 2. 5/9/89

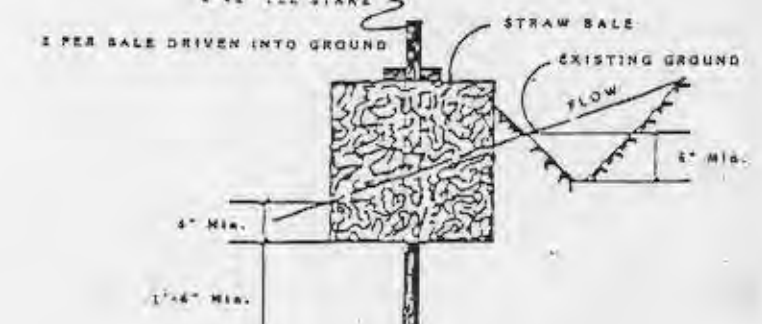
PLAN
SECTION A-A

NOTE: Proposed 8' water line shall be constructed in accordance with Missouri Cities Spec. (950 I.F. - 8" PVC, 2' F.H.)
* Verify existing location prior to construction *



NOTE:
The previously drained lake thru dam (excavated channel) will be reconstructed utilizing the original outfall structure.

Proposed outfall structure
Top of dam 511.0
Existing 21" Steel Pipe
EMERGENCY SPILLWAY
Elev 5090.7 (HW 510.0)



Temporary Siltation Control Straw Bale Detail

NOTE: CONTOURS ADOPTED FROM U.S.G.S.

Siltation Control
BRICK AREA INLET
OPEN 2 SIDES (NORTH & SOUTH FACE)

SILTATION CONTROL SHALL CONSIST OF TEMPORARY BARRIERS AND STAKES TO DIVERT STORM WATER SURF TO A NATURAL DISCHARGE POINT. SEE GRADING PLAN FOR LOCATIONS. AT EACH POINT THERE SHALL BE A DOUBLE ROW OF STRAW BALES WITH FOUR FEET OF SEPARATION BETWEEN ROWS. THE STRAW BALES SHALL BE PLACED WITH A ONE FOOT SEPARATION BETWEEN BALES AND STRAW BALES SHALL BE STAGGERED. IN AREAS WHERE A ROW AND STAKES ARE NOT FEASIBLE, A SINGLE ROW OF STRAW BALES SHALL BE PLACED END TO END TO PROTECT ADJACENT PROPERTY AND RIGHT-OF-WAYS (THIS SHALL BE THE RESPONSIBILITY OF THE GRADING CONTRACTOR OR DEVELOPER IF SO AGREED). UPON COMPLETION OF STORM SEWER, STRAW BALES SHALL BE PLACED ON ALL SIDES OF APPROPRIATE STRUCTURES TO KEEP SILT OUT OF STORM SEWER (THIS SHALL BE THE RESPONSIBILITY OF THE SEWER CONTRACTOR OR THE DEVELOPER IF SO AGREED). ALL STRAW BALES SHALL BE STAGGERED AND PROPERLY MAINTAINED UNTIL ALL DISTURBED AREAS ARE PAVED OR VEGETATION ESTABLISHED.

Construct paving from Sta. 0+00 to Sta. 1+25 or establish escrow account to cover cost of future paving.

"Culvert" at Station 0+45, shall be 5' 48" CMP's, at a maximum length of 50'. See Detail sheet 2A

