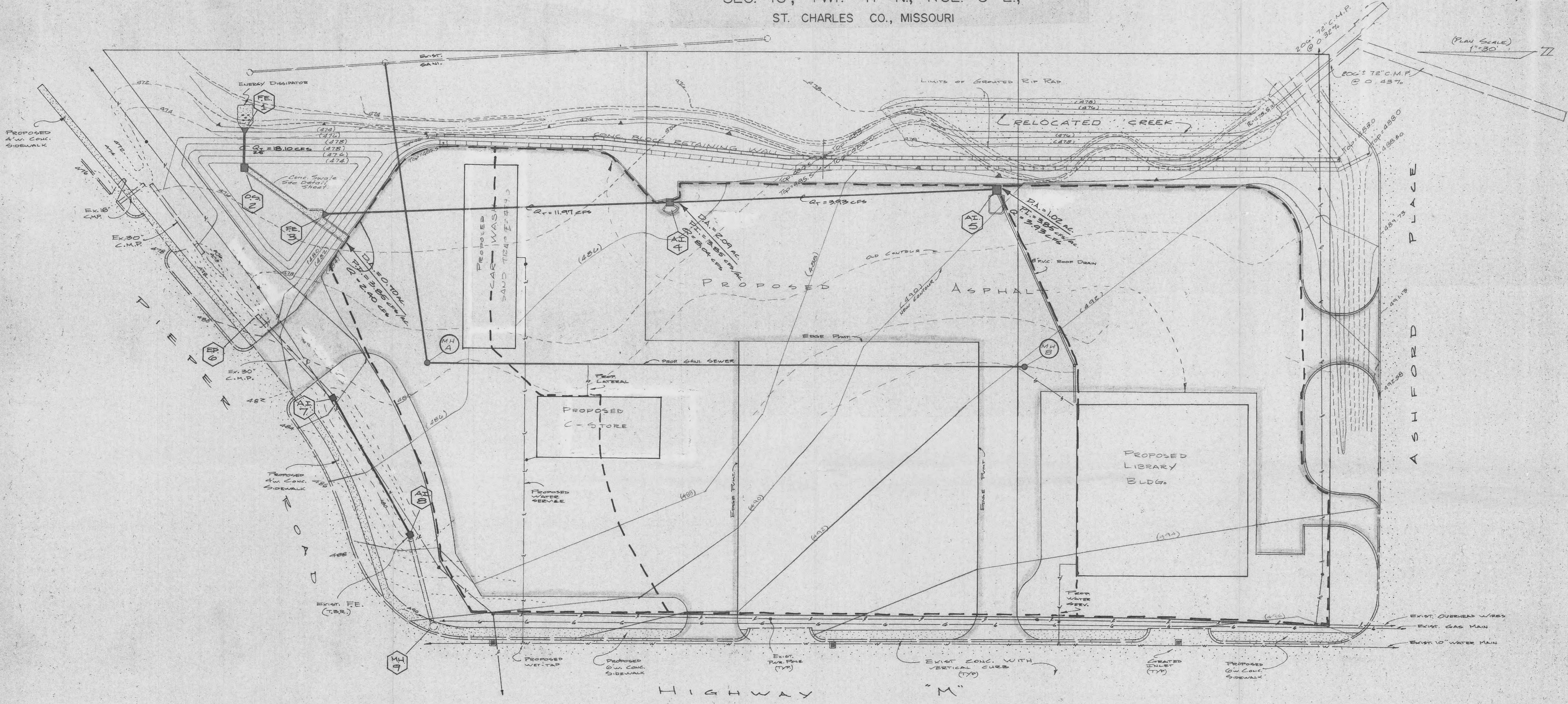


DEER RUN PLAZA

PART OF THE S.W. 1/4 OF FRACTIONAL
SEC. 16, TWP. 47 N., RGE. 3 E.,
ST. CHARLES CO., MISSOURI

(PLAN SCALE)
1"=30'



Note: Contractor to take necessary measures to prevent the sitation of adjacent properties, streets, and storm sewers during construction.

NOTE:
Underground utilities and structures have been plotted from available information and therefore, their location must be considered approximate only. It is the responsibility of the individual contractors to notify the utility companies before actual construction.

DEER Run PLAZA

Landmark Surveying & Engineering, Inc.
802 E. Main, Wentzville, MO 63385
327-5853 • 332-9180
Troy: 528-5452

**FLAT PLAN
+
DRAINAGE MAP**

Drwn.	Date
Ckd.	Date
Rev.	Date