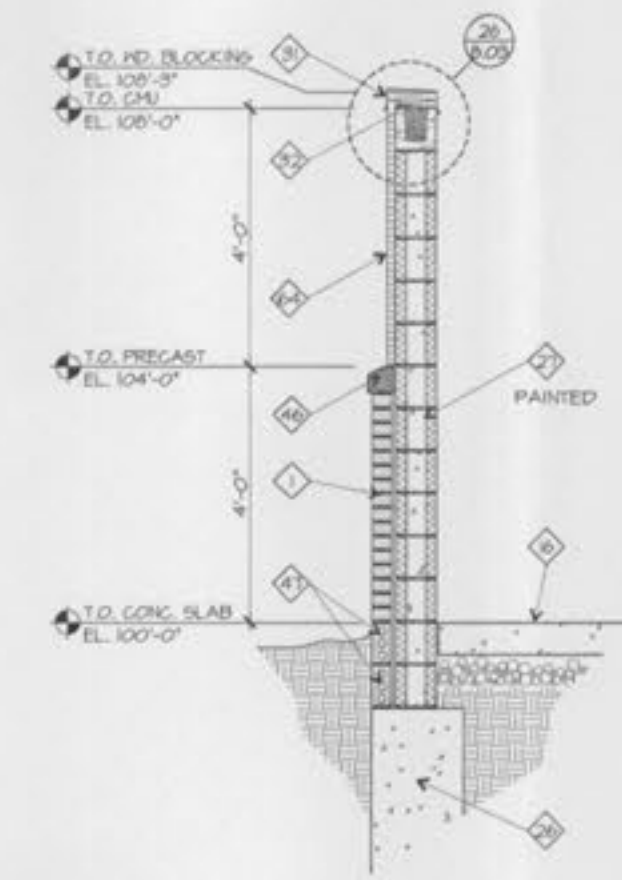


◇ WALL SECTION AND
DETAIL KEYED NOTES

- ◇ BRICK VENEER
- ◇ 12" HIGH MASONRY UNIT BY ARRISGRAFT INTERNATIONAL (RENAISSANCE) (SMOOTH FINISH)
- ◇ 4" HIGH MASONRY UNIT BY ARRISGRAFT INTERNATIONAL (RENAISSANCE) (ROCKED FINISH)
- ◇ PRE CAST CONCRETE CAP
- ◇ 1/2" GLASS FIBER SURFACED GYPSUM SHEATHING WITH BUILDING PAPER
- ◇ GALV. MASONRY ANCHORS @ 16" O.C. HORIZ. AND VERT.
- ◇ 2" AIR SPACE
- ◇ 6" W 6A METAL STUDS AT 16" O.C.
- ◇ 3 5/8" 25 GA. METAL STUDS AT 16" O.C.
- ◇ R4 BATT INSULATION (FOIL BACKED)
- ◇ 5/8" GYPSUM BOARD
- ◇ 5/8" MOISTURE RESISTANT GYPSUM BOARD
- ◇ 5/8" TYPE 'X' GYPSUM BOARD
- ◇ 5# FELT
- ◇ THRU-WALL FLASHING W/ PEEP HOLES AT 24" O.C.
- ◇ CONCRETE SLAB ON CRUSHED ROCK BASE W/ VAPOR BARRIER (SEE STRUCTURAL DRAWINGS)
- ◇ STRUCTURAL MEMBER (SEE STRUCTURAL DRAWINGS)
- ◇ 1/4" BENTONITE PANEL
- ◇ MODIFIED BITUMEN ROOF ON RIGID INSULATION
- ◇ METAL ROOF DECK (SEE STRUCTURAL DWGS.)
- ◇ DYNAFLEX SET IN HOT ASPHALT, PER FLASHING CEMENT OR HER VULCITY CEMENT
- ◇ GRADE (SEE CIVL DRAWINGS)
- ◇ PAVING (SEE CIVL DRAWINGS)
- ◇ SKIM AND SEALANT
- ◇ BACKER ROD AND SEALANT
- ◇ CONCRETE FOUNDATION (SEE STRUCTURAL DRAWINGS)
- ◇ 8" C.M.U. (SEE STRUCTURAL DWGS.)
- ◇ COPPER STANDING SEAM ROOF WITH BATTENS @ 16" O.C. INCLUDE SNOW AND ICE GUARDS
- ◇ COPPER GUTTER AND DOWN SPOUT
- ◇ COPPER METAL FLASHING
- ◇ PRE FINISHED METAL CAP
- ◇ 2X FIRE AND PRESSURE TREATED WOOD BLOCKING
- ◇ 5/8" CEMENTITIOUS BOARD
- ◇ 1 1/2" E.I.F.S. OVER 1/2" GLASS FIBER SURFACED GYPSUM SHEATHING
- ◇ 2" E.I.F.S. REVEAL, SEE DETAIL (S.M.A.03)
- ◇ 1/4" X 1/4" DRIP EDGE
- ◇ PAROE FILL
- ◇ 8" X 8" GLASS BLOCK (TYPE 'A')
- ◇ 8" X 8" GLASS BLOCK (TYPE 'B')
- ◇ PRE CAST COLUMN COVER
- ◇ ARCHITECTURAL GRADE LAMINATED ASPHALT SHINGLES
- ◇ INSULATED GLASS IN ALUMINUM FRAME
- ◇ PRE-ENGINEERED WOOD TRUSS
- ◇ 5/8" GLASS FIBER SURFACED GYPSUM SHEATHING, TYPE 'X', WITH BUILDING PAPER
- ◇ 1/2" GLASS FIBER SURFACED GYPSUM SHEATHING
- ◇ 4" HIGH PRE CAST WINDOW SILL
- ◇ BRICK SOLDIER COURSE
- ◇ 5/8" EXTERIOR GRADE PLYWOOD SHEATHING
- ◇ 1/2" 25 GA. GALV. STEEL RESILIENT CHANNELS @ 12" O.C.
- ◇ 2"x2"-0" EXTENDED RIGID INSULATION
- ◇ 5/8" EXTERIOR CEMENTITIOUS BOARD WITH E.I.F.S. FINISH SYSTEM
- ◇ 2" CONTINUOUS PRE FINISHED ALUMINUM VENT, WITH INSECT SCREEN
- ◇ 2x6 WOOD STUD @ 16" O.C.
- ◇ PRE-FINISHED ALUMINUM GUTTER
- ◇ PRE-FINISHED ALUMINUM OVER 1 1/4"x6" TREATED EXTERIOR COMPOSITE TRIM
- ◇ RIDGE VENT (SEE SPEC.)
- ◇ 3'-0" DEEP CONCRETE SLAB, SEE FLOOR PLAN
- ◇ R38 BATT INSULATION (FOIL BACKED)
- ◇ WATER PROTECTION MEMBRANE (ICE DAM PROTECTION) EXTEND FROM EAVE UP 2'-0" INSIDE INTERIOR FACE OF WALL.
- ◇ 4" GIRT
- ◇ CONCRETE SLAB ON METAL DECK (SEE STRUCTURAL DRAWINGS)
- ◇ 8" HIGH MASONRY UNIT BY ARRISGRAFT INTERNATIONAL (RENAISSANCE) (SMOOTH FINISH)
- ◇ ACOUSTICAL CEILING ON SUSPENSION SYSTEM
- ◇ 1 1/2" E.I.F.S. OVER CMU
- ◇ 3" E.I.F.S. OVER 1/2" GLASS FIBER SURFACED GYPSUM SHEATHING



25 WALL SECTION
1/2" = 1'-0"

Copyright 2002, Gray Design Group, Inc.
9 Stinson Drive, Suite 110
St. Louis, Missouri 63143
Fax 314.646.0100
Telephone 314.646.0400
www.graydesigngroup.com

Date: 05.21.02
Contact: Steven Kuhlmann
Produced By: Bill Decker
Reviewed By: Ron Darker

Rev. Description Date

A NEW SKILLED CARE FACILITY FOR:
DELMAR GARDENS OF O'FALLON
CITY OF O'FALLON
MISSOURI

