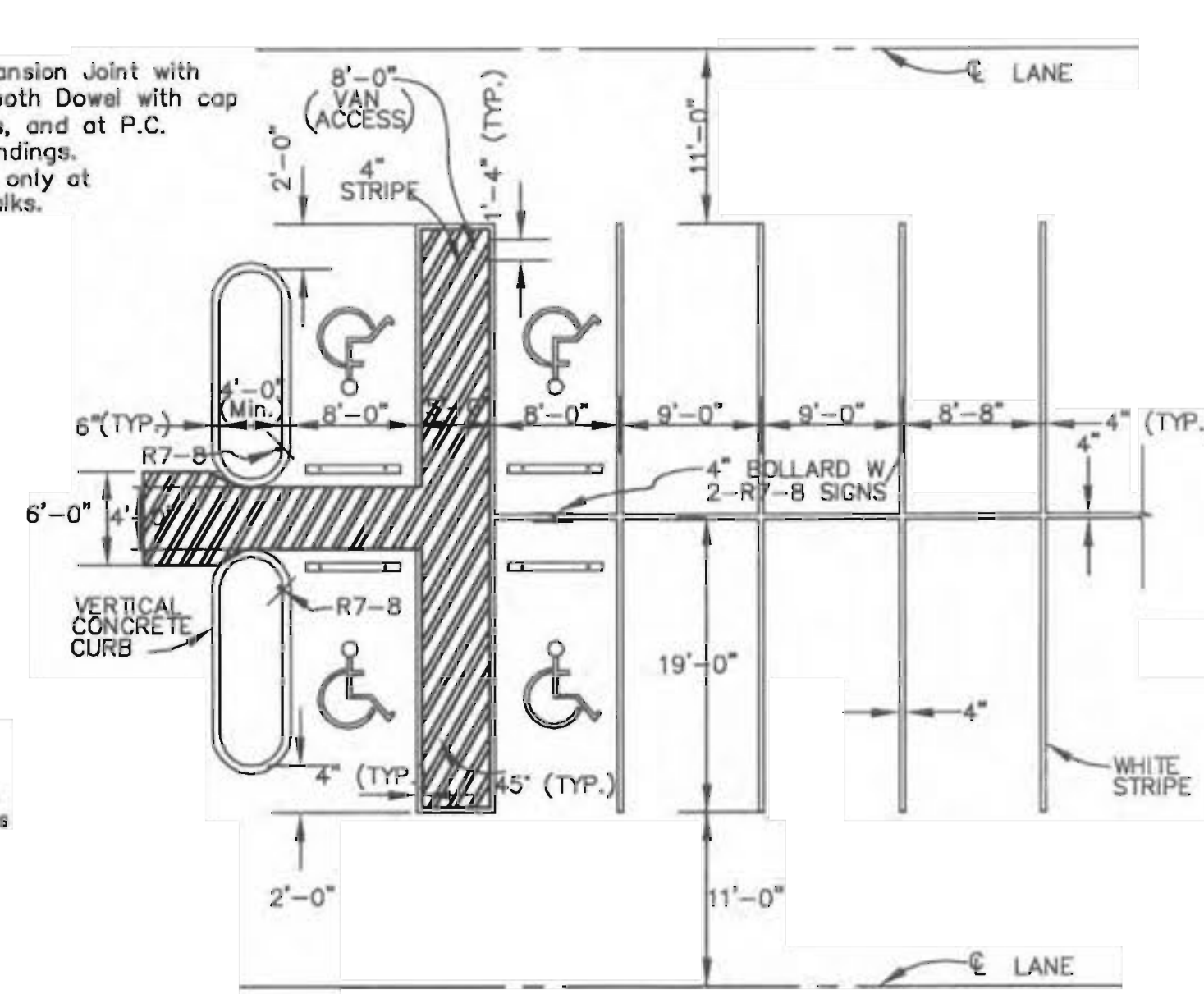
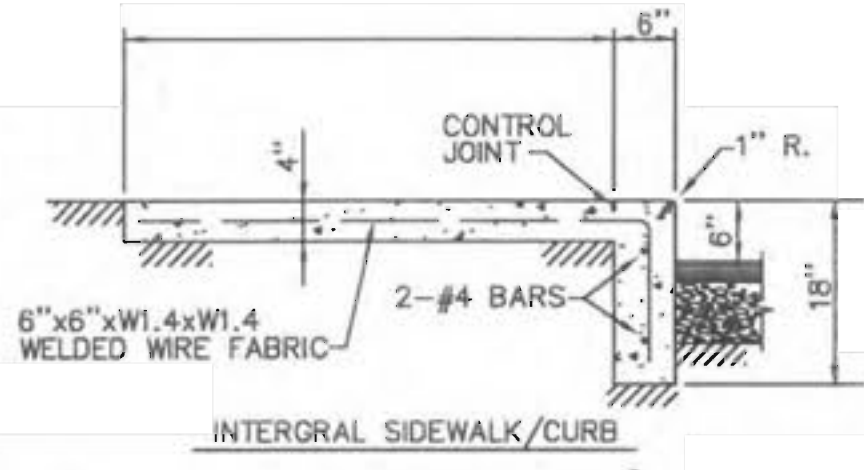


Place 1/2" Expansion Joint with 1/2" x 18" Smooth Dowel with cap at 20'± Centers, and at P.C. and P.T. of roundings. Expansion Joint only at junction with walks.

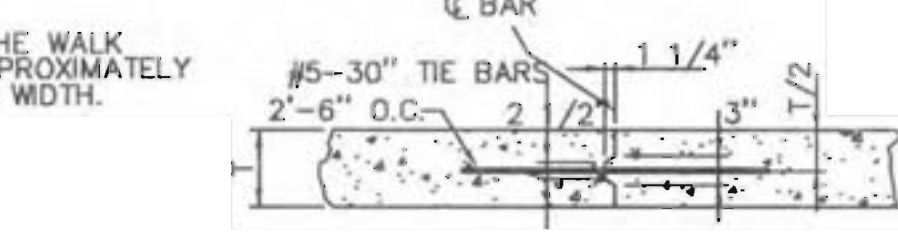


STRIPING-90 PARKING
NOT TO SCALE

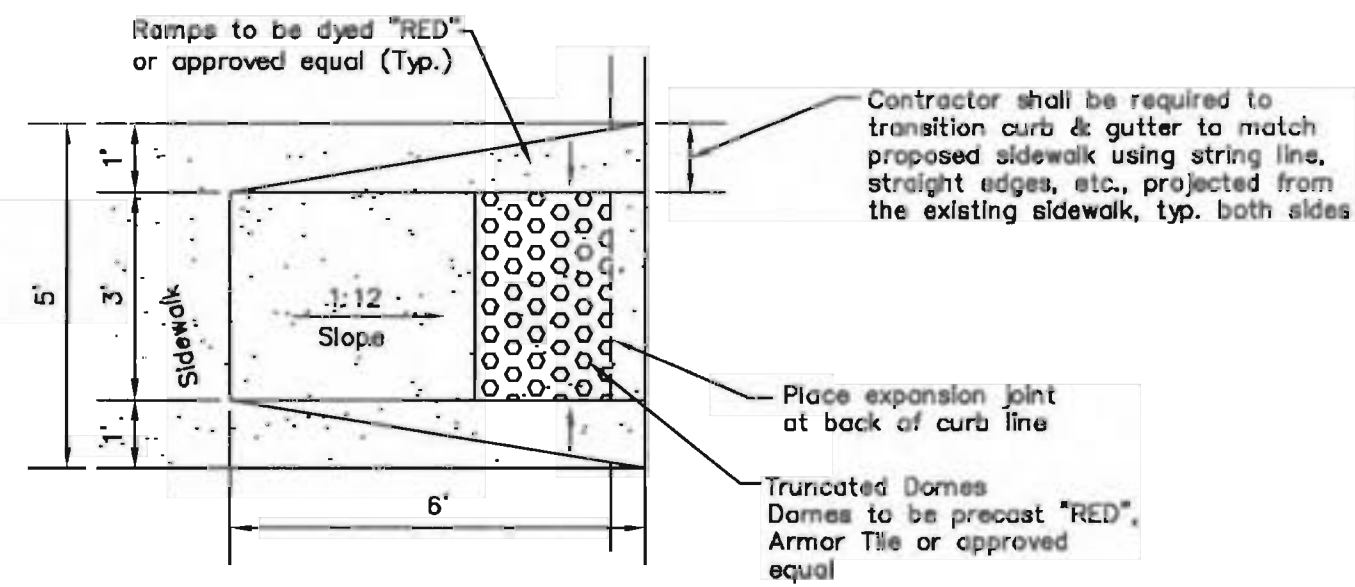
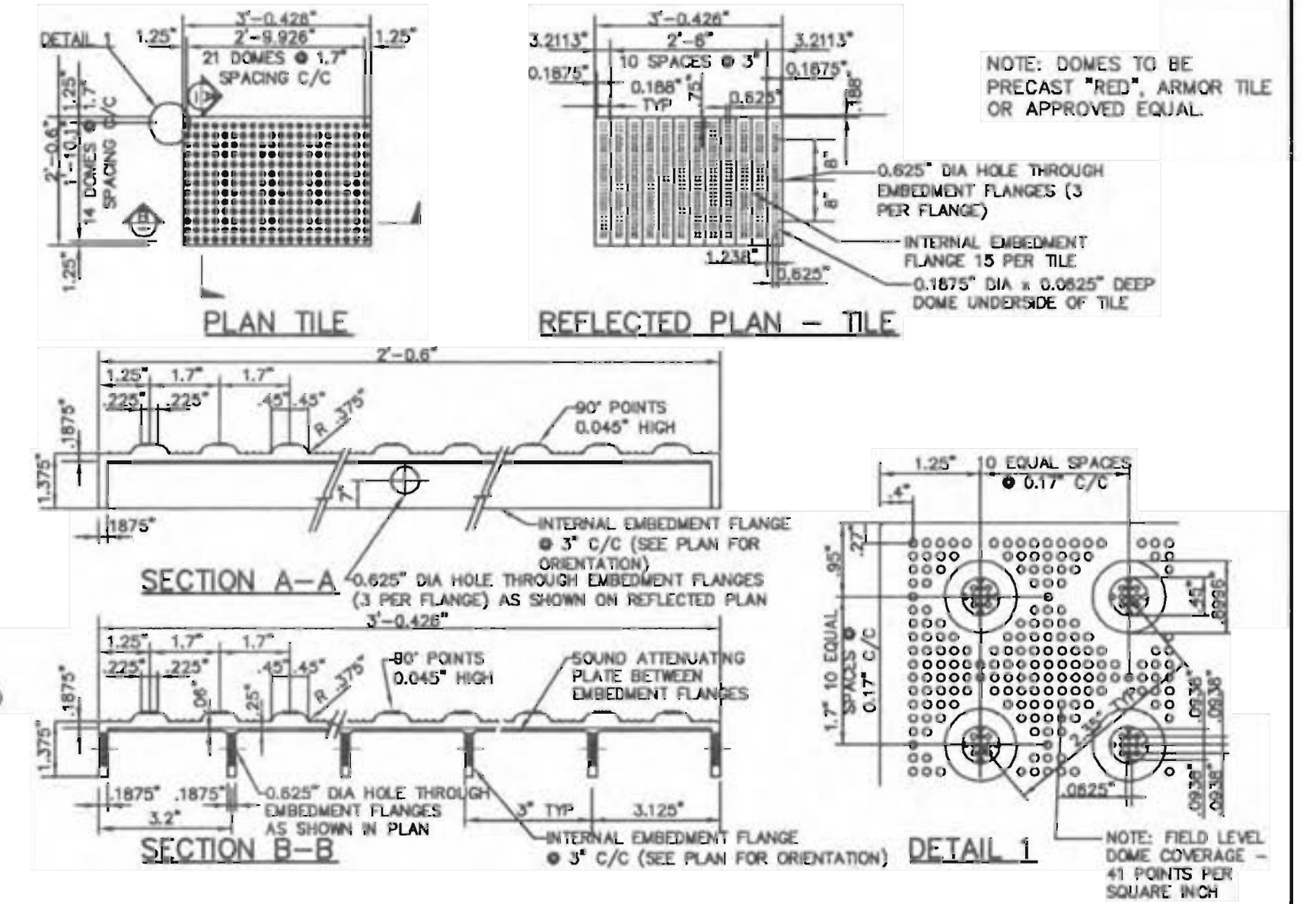
NOTE: EXPANSION JOINT MATERIAL SHALL BE INSTALLED IN THE WALK FOR ITS FULL WIDTH AND DEPTH AT INTERVALS OF APPROXIMATELY 50'. CONTROL JOINTS AT INTERVALS OF 1.5 TIMES ITS WIDTH.



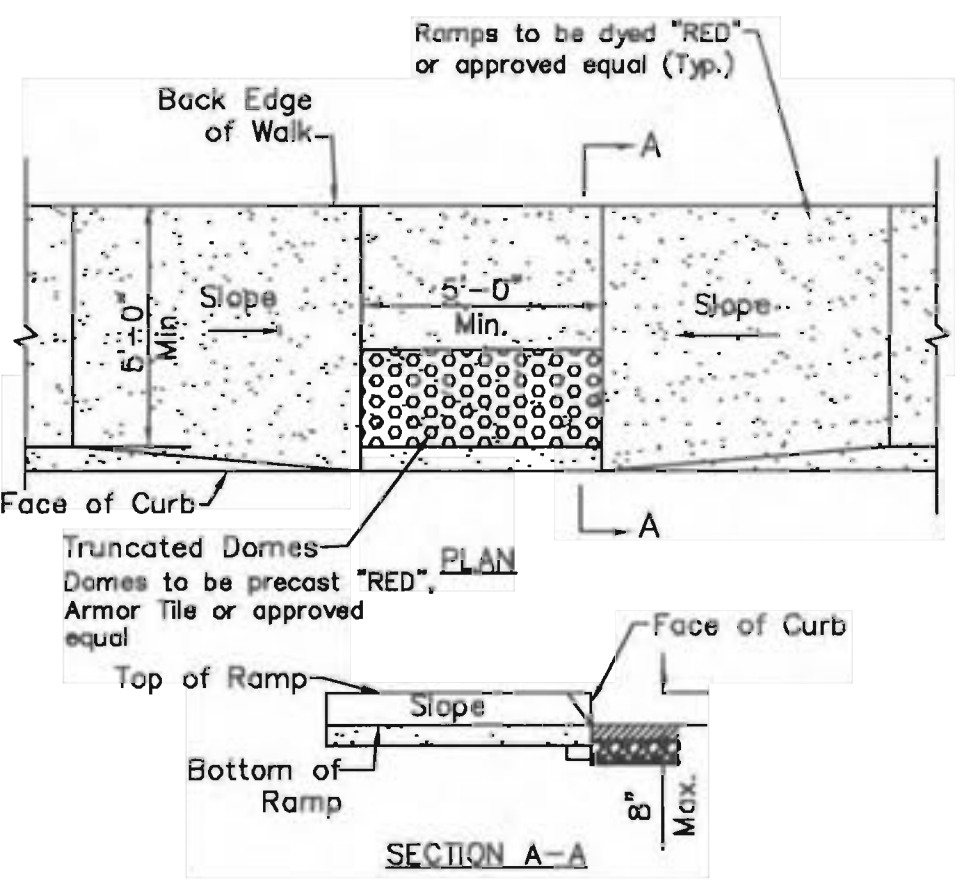
CONCRETE SIDEWALK
NOT TO SCALE



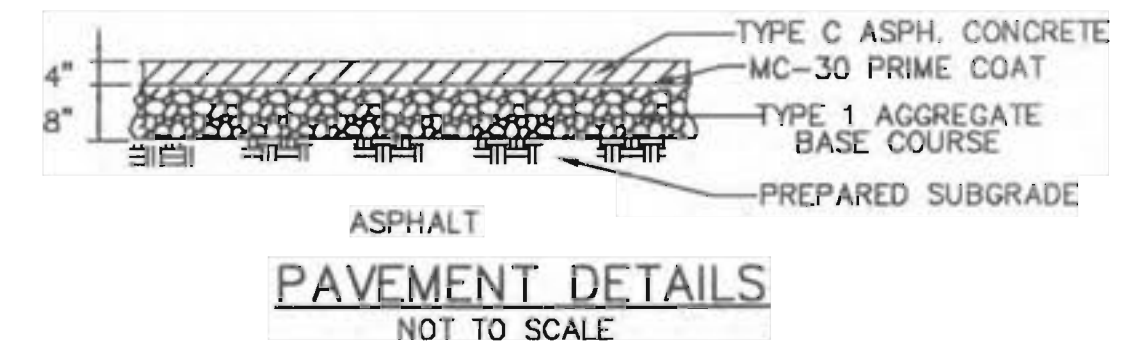
CONCRETE PAVEMENT JOINTS
NOT TO SCALE



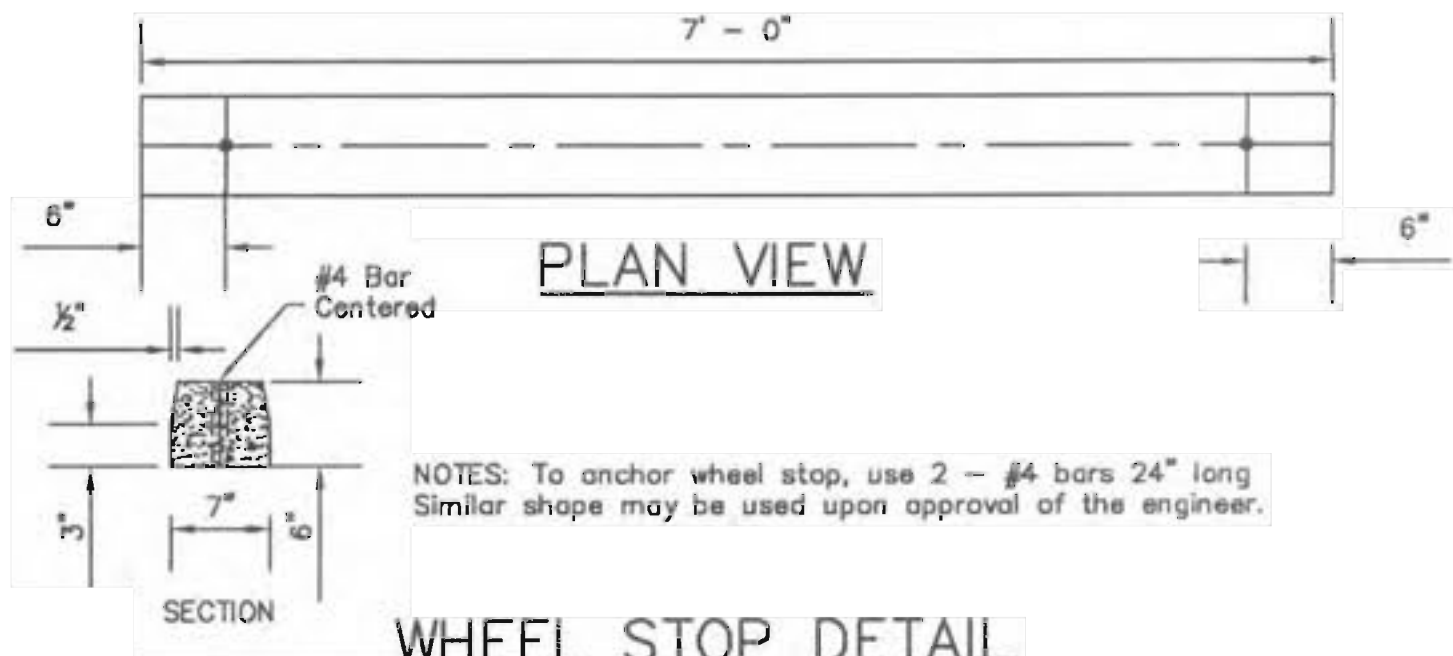
TYP. HANDICAP RAMP PLAN
NOT TO SCALE



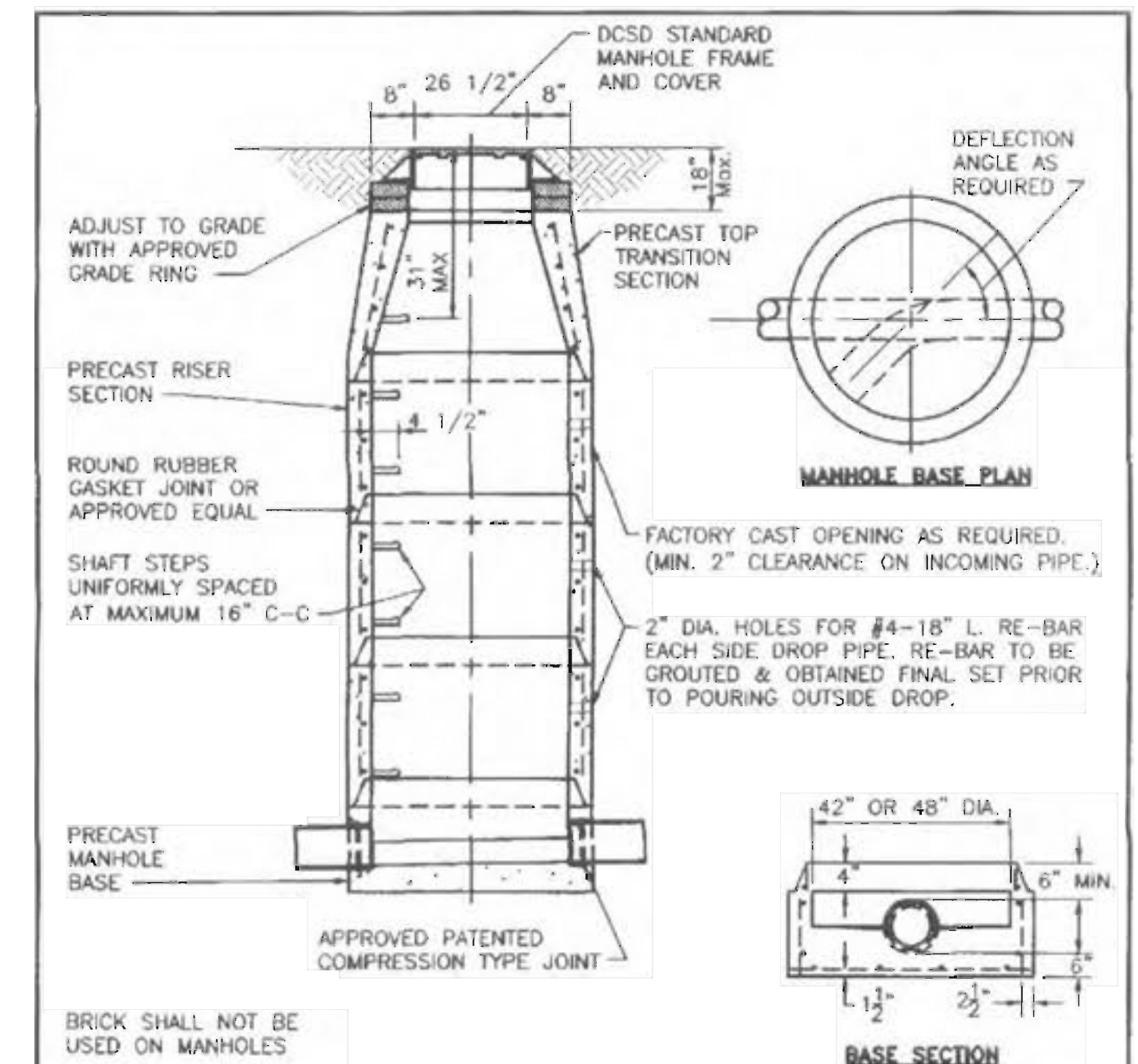
HANDICAP RAMP
NOT TO SCALE



PAVEMENT DETAILS
NOT TO SCALE



WHEEL STOP DETAIL
NOT TO SCALE

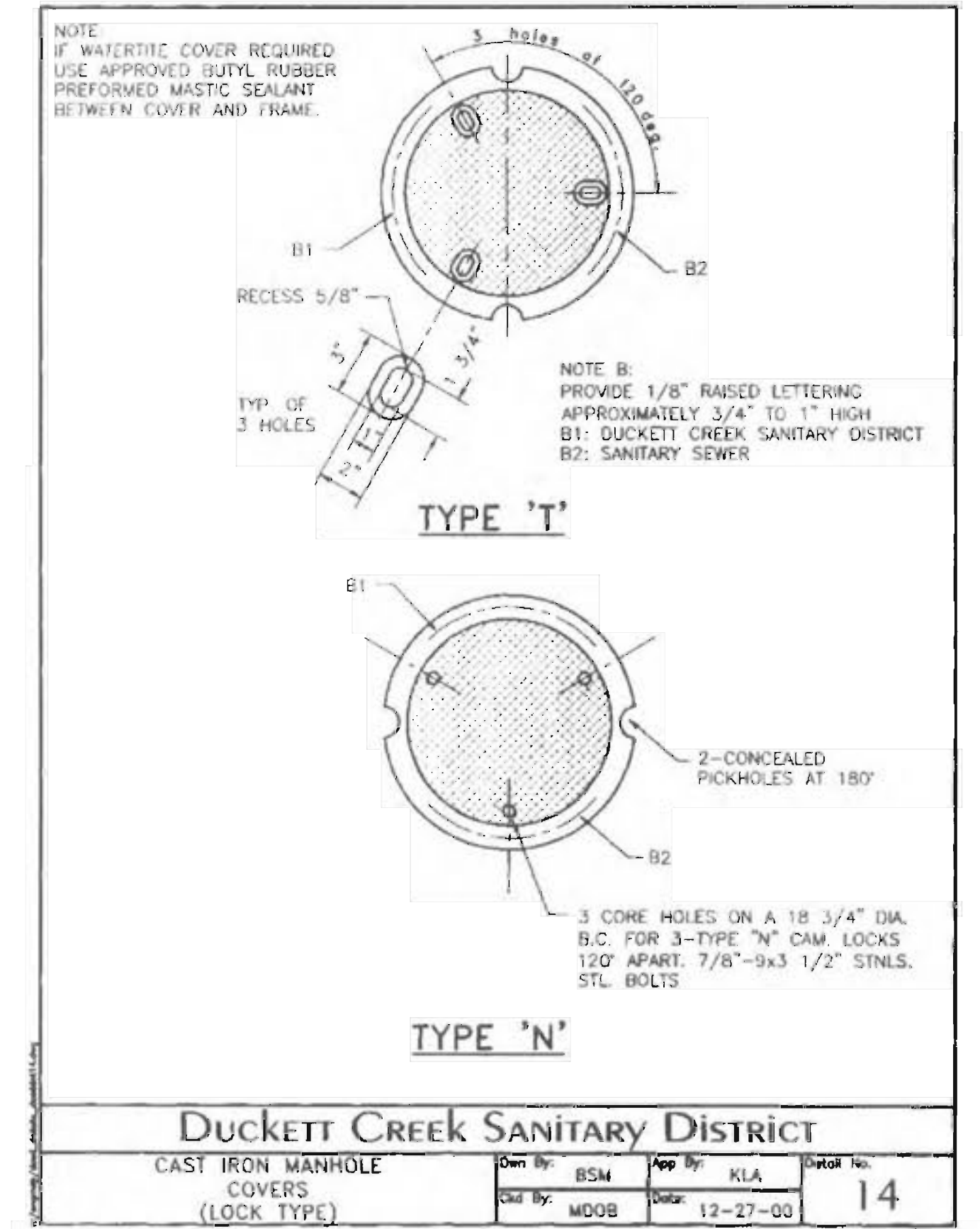


SECTION OF MANHOLE		DIMENSION	
TOP TRANSITION	UPPER LOWER	26 1/2\" DIA.	42\" DIA.
BOTTOM SECTION	8\" DIA. PIPE	42\" DIA.	
BOTTOM SECTION	10\" THRU 36\" DIA. PIPE	48\" DIA.	
BOTTOM SECTION	42\" DIA.	60\" DIA.	

NOTE: ALL INVERTS SHALL HAVE POSITIVE DRAINAGE THROUGH MANHOLE.

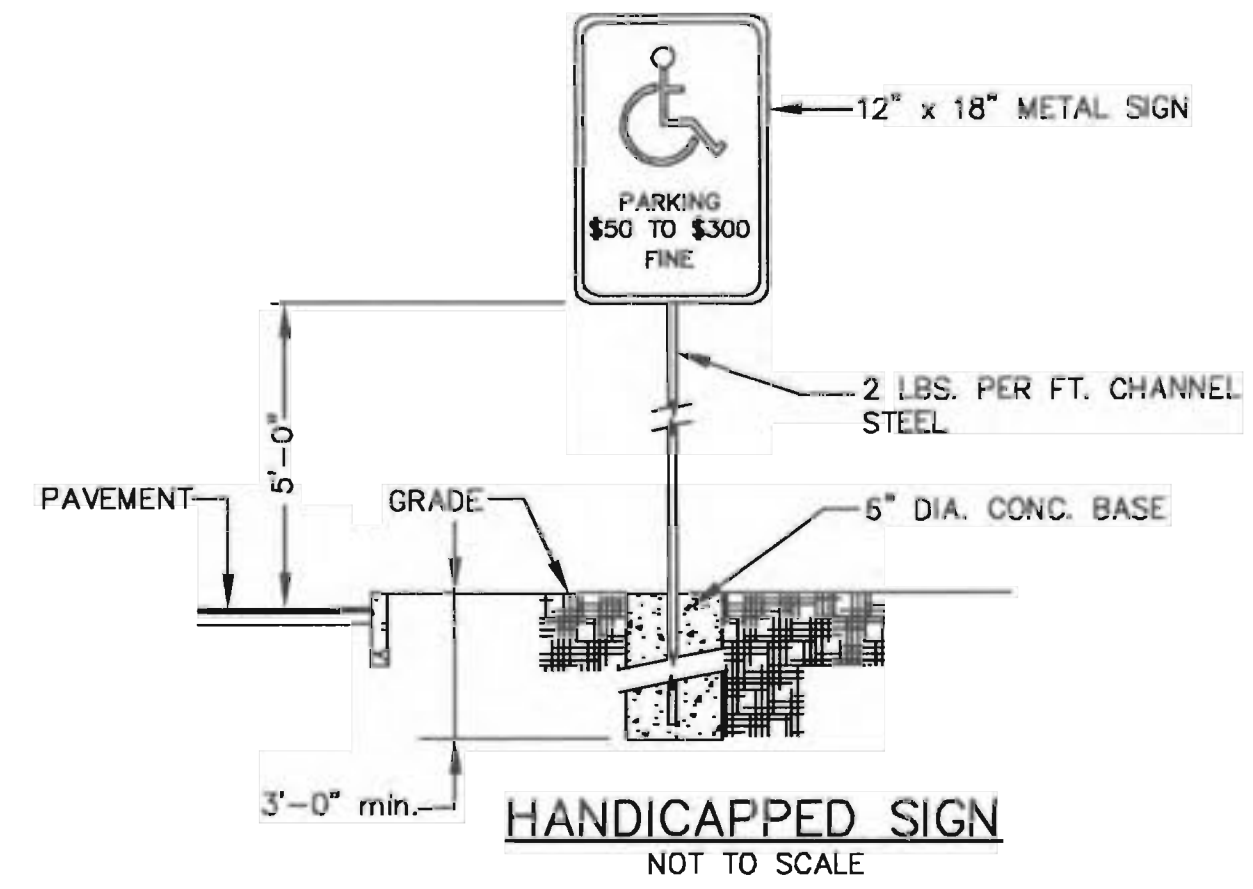
SEE A.S.T.M. C-478 FOR MINIMUM STEEL REQUIREMENTS.

DUCKETT CREEK SANITARY DISTRICT
PRE-CAST CONCRETE MANHOLE FOR SEWERS
8\" THROUGH 18\"



DUCKETT CREEK SANITARY DISTRICT
CAST IRON MANHOLE COVERS (LOCK TYPE)

SIGN NOTE: All sign post and backs and bracket arms shall be painted black using Carboline Rustbond Penetrating Sealer SG and Carboline 133 HB point (or equivalent as approved by City and MoDOT). Signs designating street name shall be on the opposite side of the street from traffic control signs.



HANDICAPPED SIGN
NOT TO SCALE

The signed and sealed original of this drawing is on file at the offices of The Clayton Engineering Company, Inc. The signed and sealed original is the official document and shall take precedence over any digital version.

BID SET	REVISIONS
---------	-----------

PAVING DETAILS
SKILLED CARE EXPANSION
Highway N and Twin Chimney Boulevard, O'Fallon, Missouri 63368
Prepared for:
DELMAR GARDENS ENTERPRISES, INC.
14805 N. Outer 40
Chesterfield, MO 63017
636-733-7000

Copyright 2008 Clayton Engineering Co. All Rights Reserved.



the clayton engineering company, inc.
ENGINEERS • SURVEYORS • PLANNERS
11920 WESTLINE INDUSTRIAL DRIVE
ST. LOUIS, MISSOURI 63146
(314) 692-8888 FAX: (314) 692-8688
clayton-engineering.com

Designed	RKF
Drawn	RKF
Checked	MJV
Date	01/29/08
Project Number	00228.11
Sheet Number	C-6 of 10