

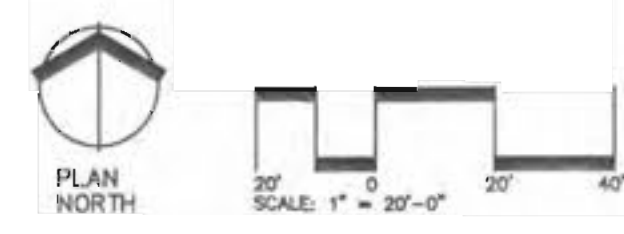
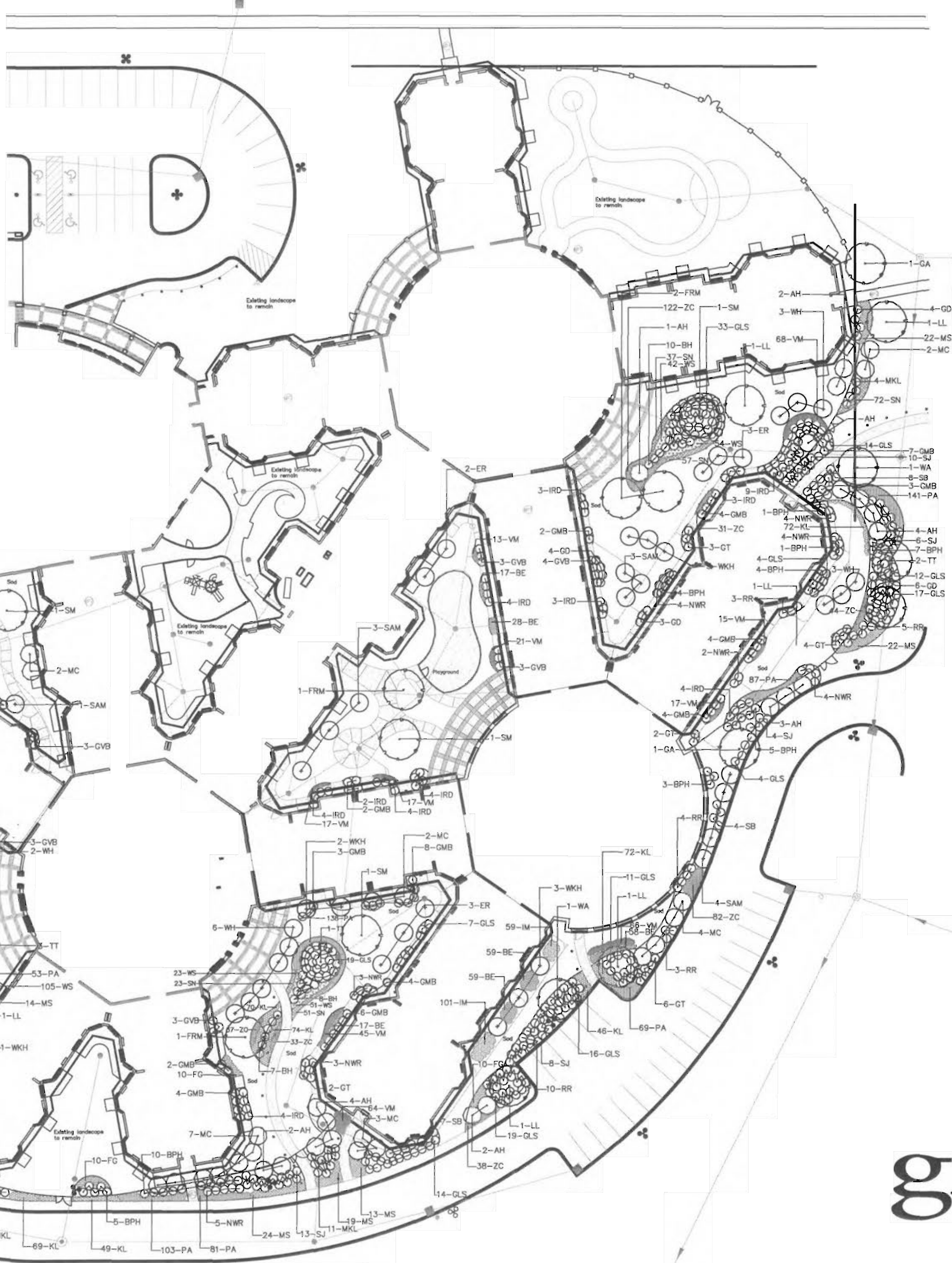
NOTE: THE PLANT LIST IS PROVIDED FOR INFORMATION ONLY. PLANT QUANTITIES UNDER THE CONTRACT ARE INDICATED ON THE PLAN. IN THE EVENT OF ANY DISCREPANCIES, THE CONTRACT SHALL BE BASED ON THE QUANTITIES SHOWN ON THE PLAN.

QTY	KEY	BOTANICAL NAME	COMMON NAME	SIZE	SIZE (CONG.)	NOTE
Plant List						
CANOPY TREES						
6	FRM	ACER RUBRUM 'FRANKSRED'	FRANKSRED RED MAPLE	3" cal.	14-16 h.	B&B STRONG CENTRAL LEADER
4	SM	ACER SACCHARUM	SUGAR MAPLE	3 1/2" cal.	16-18" h.	B&B STRONG CENTRAL LEADER
3	RB	BETULA NIGRA	RIVER BIRCH	3" cal.	14-16 h.	B&B STRONG CENTRAL LEADER
2	GA	FRAXINUS PENNSYLVANICA	GREEN ASH	3" cal.	14-16 h.	B&B STRONG CENTRAL LEADER
3	WA	FRAXINUS AMERICANA	WHITE ASH	3 1/2" cal.	16-18 h.	B&B STRONG CENTRAL LEADER
6	TT	LIRIODENDRON TULIPIFERA	TULIPTREE	3" cal.	14-16 h.	B&B STRONG CENTRAL LEADER
6	LL	LILIA CORDATA	LILYLEAF LINDEN	3 1/2" cal.	16-18 h.	B&B STRONG CENTRAL LEADER
FLOWERING TREES						
11	ER	CEONIS CANADENSIS	EASTERN REDBUD	8-10" h.	8-10" h.	B&B MULTI-STEM
18	WH	CRATAEGUS PHAENOPYRUM	WASHINGTON HAWTHORN	8-10" h.	8-10" h.	B&B MULTI-STEM
16	SAM	MAGNOLIA x SOULANGIANA	SAUCEY MAGNOLIA	8-10" h.	8-10" h.	B&B MULTI-STEM
14	WKH	CRATAEGUS VIRENS	WINTER KING HAWTHORN	8-10" h.	8-10" h.	B&B MULTI-STEM
40	MC	MALUS 'CAMZAN' CAMELOT	FLOWERING CRABAPPLE	8-10" h.	8-10" h.	B&B STRONG CENTRAL LEADER
CONIFEROUS TREES						
25	AH	ILEX OPACA	AMERICAN HOLLY	6-10" h.	6-10" h.	B&B STRONG CENTRAL LEADER
SHRUBS						
27	GD	CORNUS RACEMOSA 'MUSKOGUM'	MUSKOGUM GRAY DOGWOOD	24" h.	3 gal.	4" O.C.
63	IRD	CORNUS SERICEA 'SANT'	SANT'S REDTIG DOGWOOD	24" h.	3 gal.	4" O.C.
247	GLS	RHUS AROMATICA 'ORO-LOW'	ORO-LOW SUMAC	24" h.	3 gal.	4" O.C.
60	GMB	BUXUS x GREEN MOUNTAIN	GREEN MOUNTAIN BOXWOOD	24" h.	3 gal.	4" O.C.
56	GVB	BUXUS x GREEN VELVET	GREEN VELVET BOXWOOD	24" h.	3 gal.	4" O.C.
39	GT	FORSYTHIA 'GOURTASOL' GOLD TIDE	GOLD TIDE FORSYTHIA	24" h.	3 gal.	4" O.C.
30	BH	HYDRANGEA 'MACROPHYLLA'	BIGLEAF HYDRANGEA	4-6" h.	5 gal.	4" O.C.
23	MKL	SYRINJA PATULA 'MISS KIM'	MISS KIM LILAC	3-5" h.	5 gal.	4" O.C.
33	BPH	ILEX x MESSERVEAE	BLUE PRINCE HOLLY	6-9" h.	5 gal.	4" O.C.
60	NWR	ROSA x 'NEARLY WILD'	NEARLY WILD ROSE	3" cal.	3 gal.	4" O.C.
49	RR	ROSA RUOSSA	RUOSSA ROSE	24" h.	3 gal.	4" O.C.
47	SJ	SPIREA JAPONICA 'TROCIBEL'	TROCIBEL SPIREA	24" h.	3 gal.	4" O.C.
19	SB	SPIREA BETULIFOLIA 'TOR'	BIRDLEAF SPIREA	24" h.	3 gal.	4" O.C.
PERENNIALS						
782	ZC	COREOPSIS VERTICILLATA	ZAGREB COREOPSIS	12" h.	1 gal.	12" O.C.
416	KL	LIATRIS SPICATA	KOBOLD GAYFEATHER	12" h.	1 gal.	12" O.C.
159	MS	SEDUM 'MATRONA'	MATRONA SEDUM	12" h.	1 gal.	12" O.C.
1,151	PA	ASTER NOVAE-ANGLIAE 'PURPLE DOME'	PURPLE DOME ASTER	12" h.	1 gal.	12" O.C.
240	SN	SALVIA MEMOROSA 'MAY NIGHT'	MAY NIGHT SALVIA	12" h.	1 gal.	12" O.C.
414	WS	ECHINACIA PURPUREA 'WHITE SWAN'	WHITE SWAN CONEFLOWER	12" h.	1 gal.	12" O.C.
59	FG	PENISSETUM ALPEICUROIDES	DWARF FOUNTAIN GRASS	24" h.	1 gal.	24" O.C.
ANNUALS						
437	VN	CATHARANTHUS ROSEUS	VIOLA	12" h.	1 gal.	12" O.C.
211	IM	IMPATIENS WALLERIANA	IMPATIENS	12" h.	1 gal.	12" O.C.
180	BE	BEGONIA 'REPARDEY' DRAGON KING RED	BEGONIA	12" h.	1 gal.	12" O.C.

LEGEND:

- PERENNIALS
 - PURPLE DOME ASTER
 - WHITE SWAN CONEFLOWER
 - DWARF FOUNTAIN GRASS
 - MAY NIGHT SALVIA
 - ZAGREB COREOPSIS
 - KOBOLD LIATRIS
 - MATRONA SEDUM
- ANNUALS
 - VIOLA
 - IMPATIENS
 - BEGONIA
- SANITARY SEWER
- DRAIN INLET
- STORM SEWER
- LIGHT POLE FIXTURE
- BOLLARD LIGHT

See Sheet L2.00 for Landscape Notes and Planting Details



Landscape Plan

GRAY DESIGN GROUP
 9 Satterth Drive, Suite 110
 St. Louis, Missouri 63143
 Fax 314.646.0100
 Telephone 314.646.0400
 www.graydesigngroup.com

Austin Top & Associates, Inc.
 Landscape Architects & Engineers
 2001 Collier Street, 5th Floor
 St. Louis, Missouri 63103
 314.436.8888 ext. 314.436.8100

Date: 1.29.08
 Contact: Handy Brinkner
 Produced By: Jeri Crowe
 Reviewed By: Austin Top
 Rev: 000
 Date: 1.29.08

Construction Documents For:
DELMAR GARDENS OF OFALLON
 Skilled Care Expansion
 7066 South Outer 364, O'Fallon, Missouri 63366



job: 27106279.00
L1.00