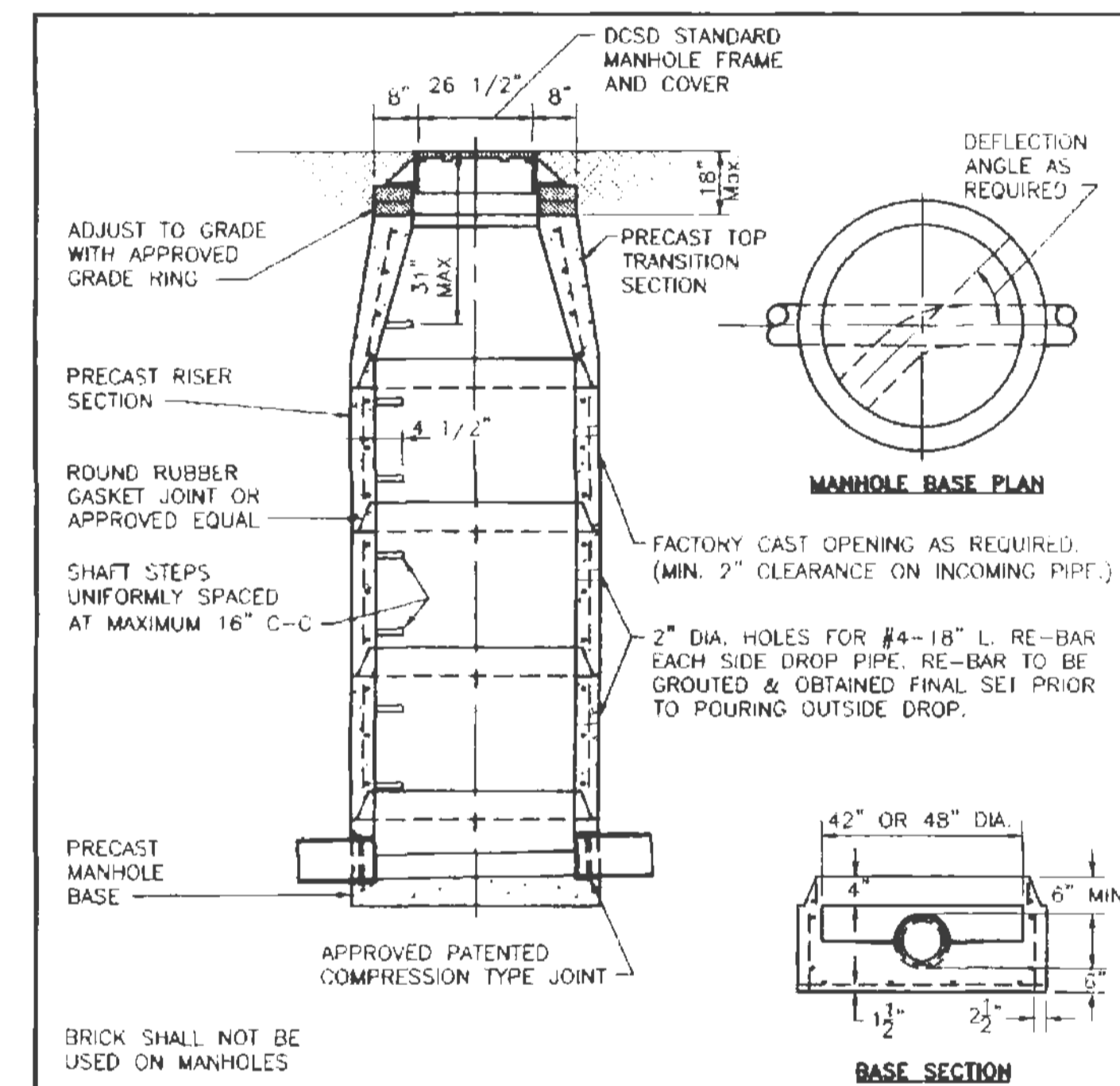
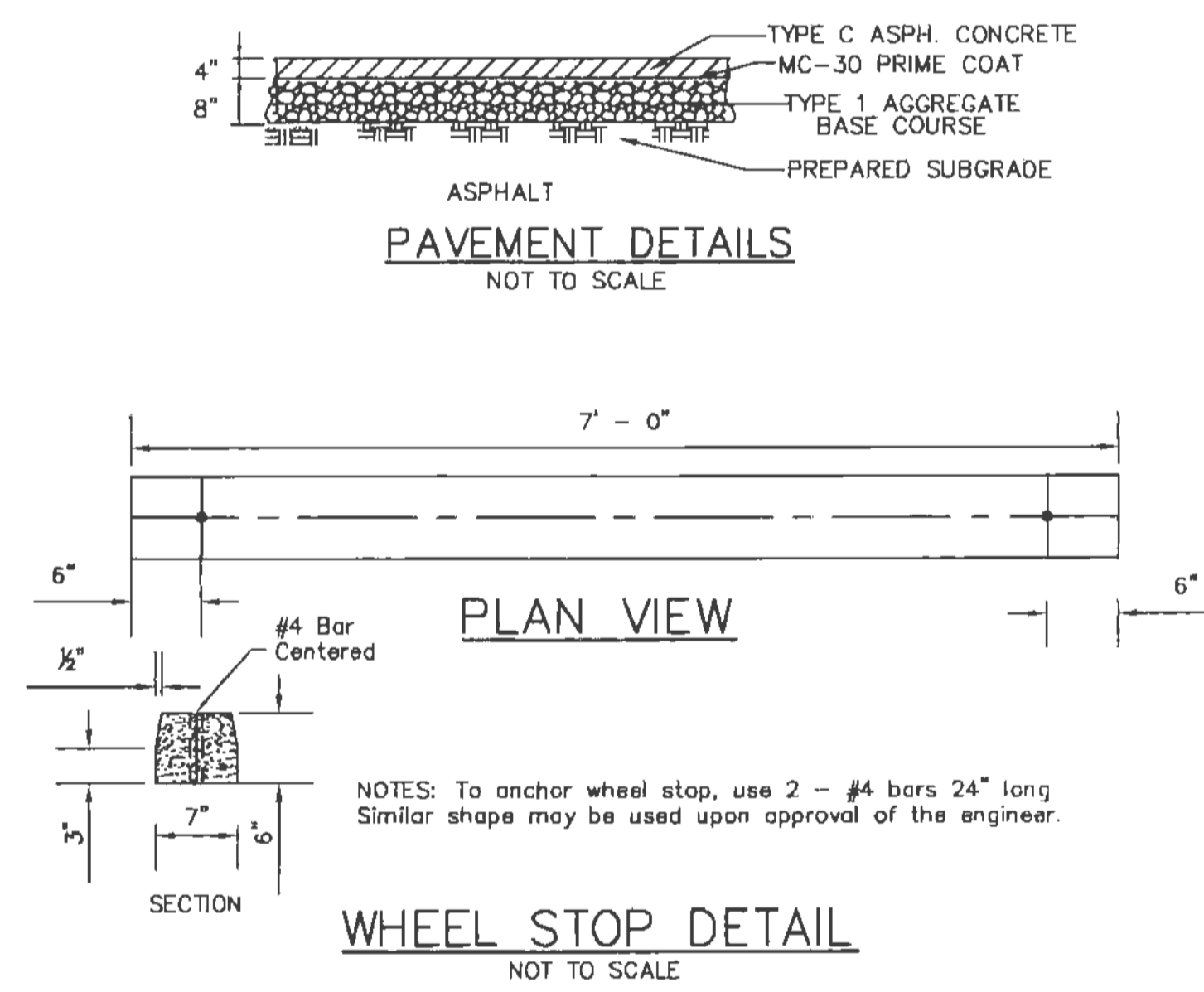
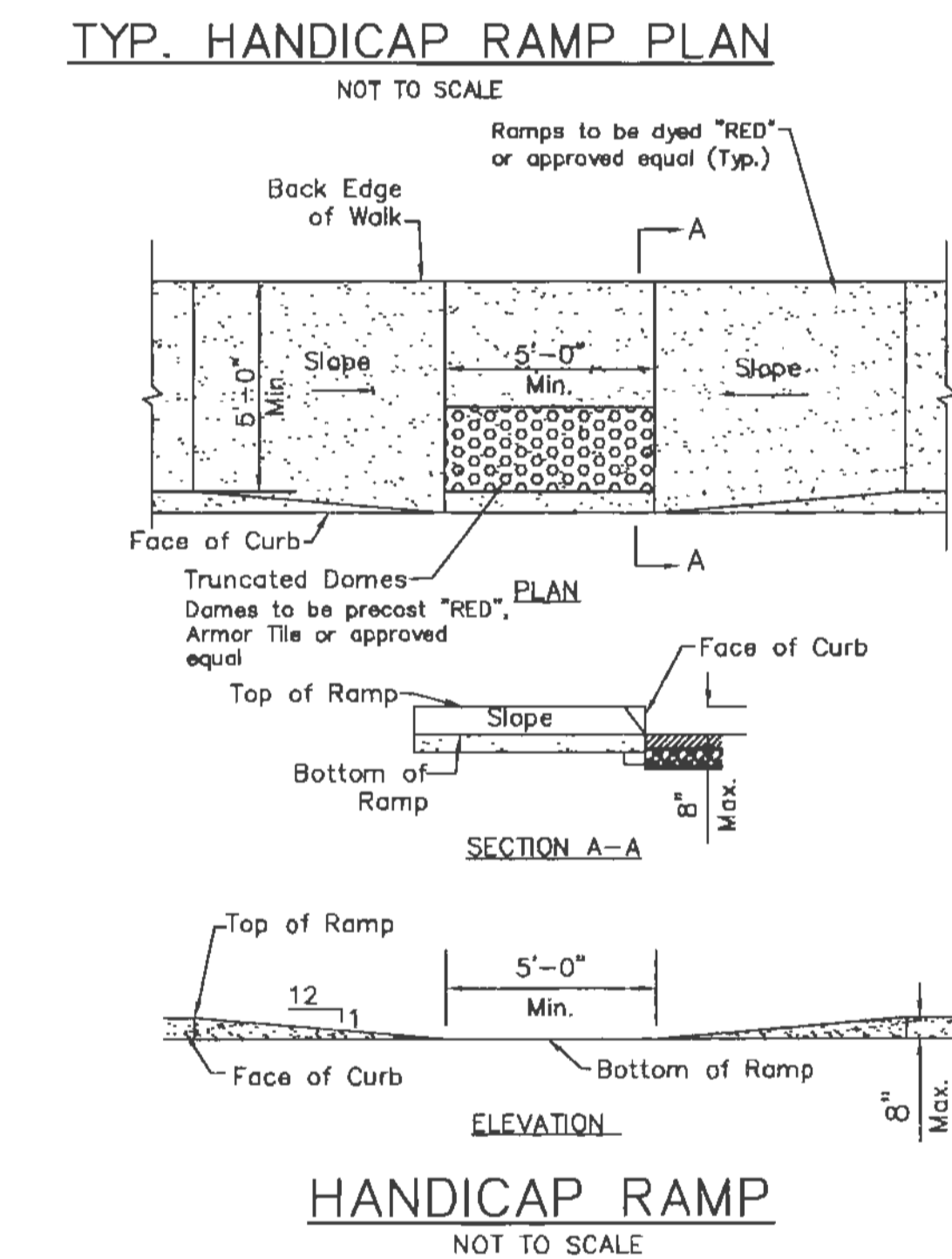
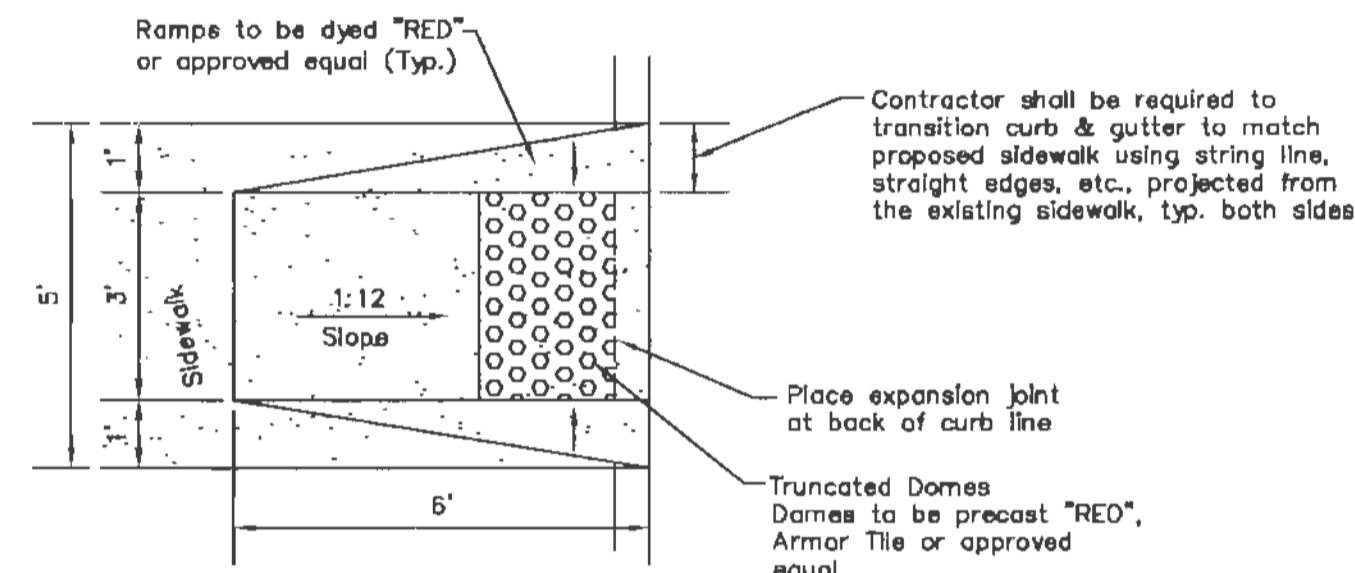
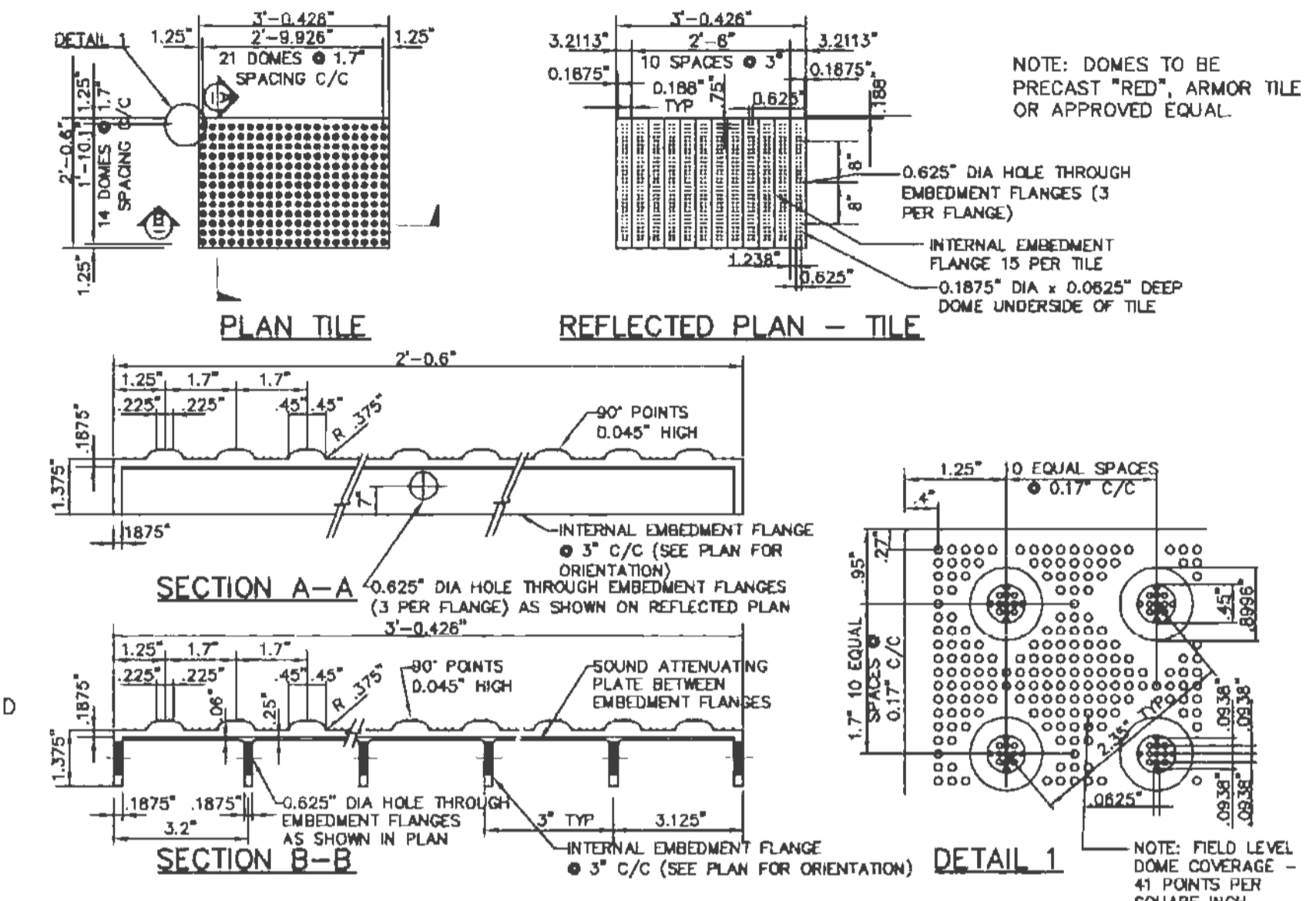
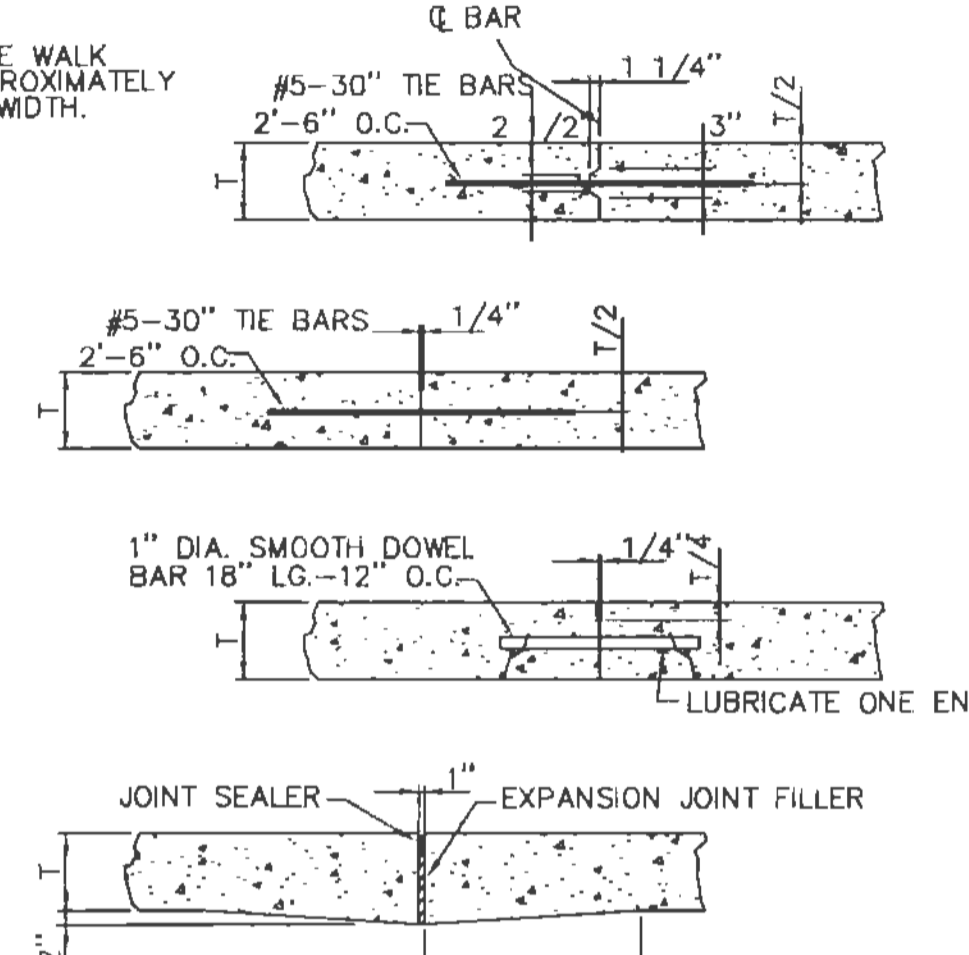
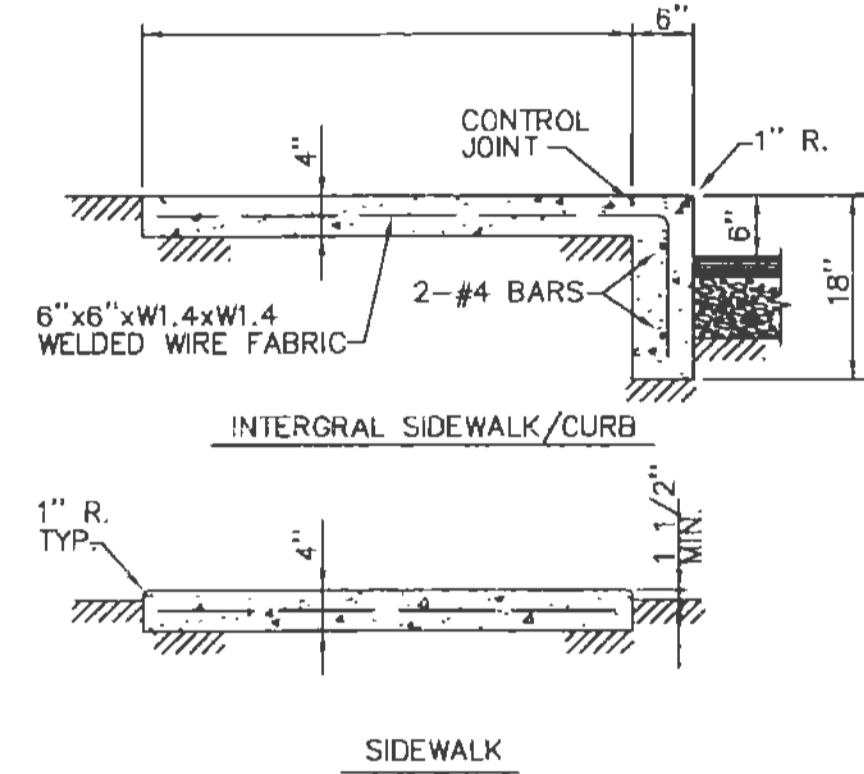


NOTE: EXPANSION JOINT MATERIAL SHALL BE INSTALLED IN THE WALK FOR ITS FULL WIDTH AND DEPTH AT INTERVALS OF APPROXIMATELY 50'. CONTROL JOINTS AT INTERVALS OF 1.5 TIMES ITS WIDTH.

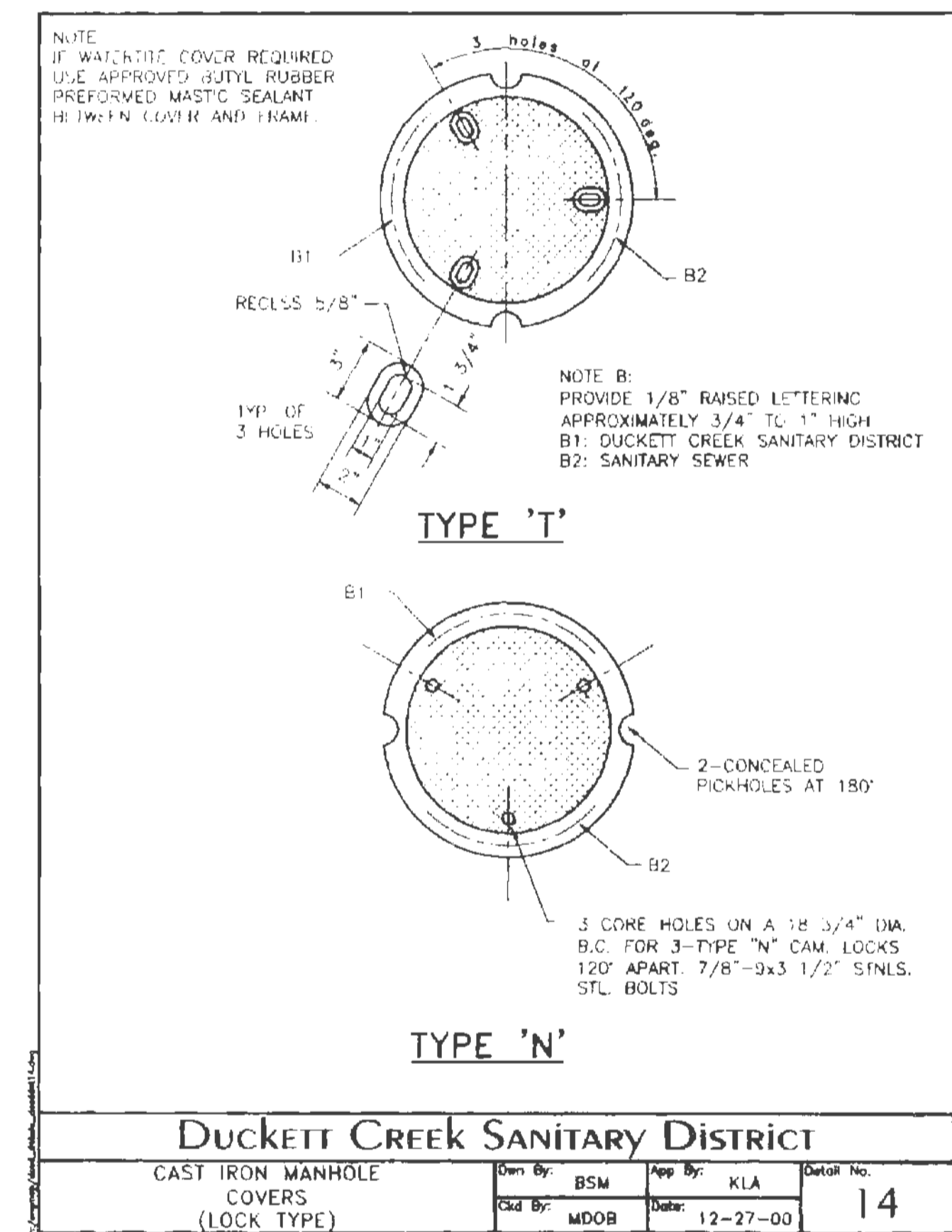


SECTION OF MANHOLE	UPPER DIMENSION	LOWER DIMENSION
TOP TRANSITION	26 1/2" DIA	42" DIA
BOTTOM SECTION	8" DIA PIPE	42" DIA
BOTTOM SECTION	16" THRU 36" DIA PIPE	48" DIA
BOTTOM SECTION	42" DIA	60" DIA

NOTE: ALL INVERTS SHALL HAVE POSITIVE DRAINAGE THROUGH MANHOLE.

SEE A.S.I.M. C-478 FOR MINIMUM STEEL REQUIREMENTS.

Duckett Creek Sanitary District			
PRE-CAST CONCRETE MANHOLE FOR SEWERS 8" THROUGH 18"			
Des. By:	BSM	App. By:	KLA
Chd. By:	MDOB	Date:	12-30-99
		Detail No. 7	



The signed and sealed original of this drawing is on file at the offices of The Clayton Engineering Company, Inc. The signed and sealed original is the official document and shall take precedence over any digital version.

REVISIONS	

PAVING DETAILS
SKILLED CARE EXPANSION
Highway N and Twin Chimney Boulevard
Prepared for:
DELMAR GARDENS ENTERPRISES, INC.
14805 N. Outer 40
Chesterfield, MO 63017
636-733-7000

the clayton engineering company, inc.
ENGINEERS • SURVEYORS • PLANNERS
11920 WESTLINE INDUSTRIAL DRIVE
ST. LOUIS, MISSOURI 63146
(314) 892-8888 FAX: (314) 892-8688
clayton-engineering.com

Designed: RKF
Drawn: RKF
Checked: MJV
Date: 01/29/08
Project Number: 00228.11
Sheet Number: C-6 of 10

SIGN NOTE: All sign post and backs and bracket arms shall be painted black using Carboline Rustbond Penetrating Sealer SG and Carboline 133 HB paint (or equivalent as approved by City and MoDOT). Signs designating street name shall be on the opposite side of the street from traffic control signs.

