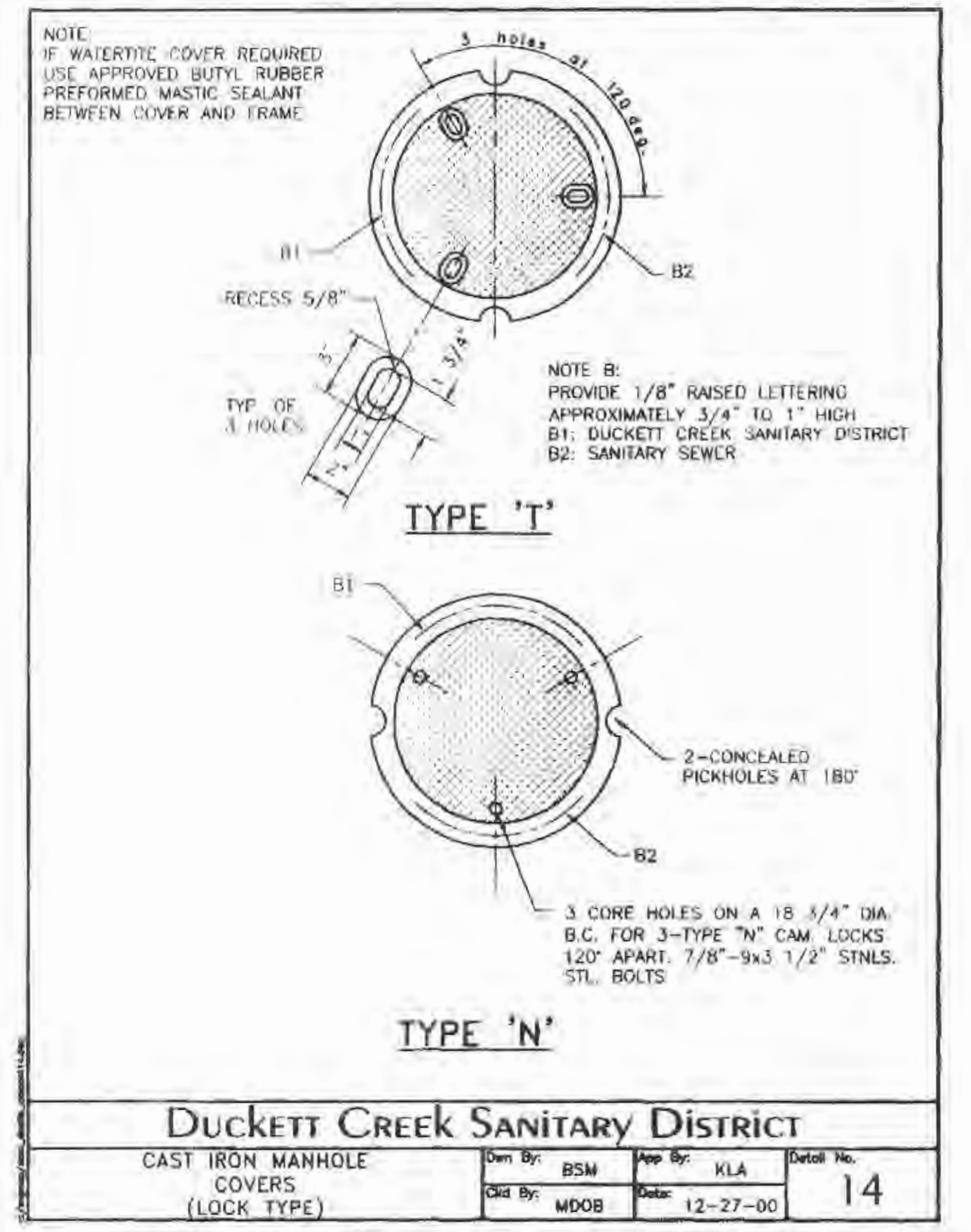
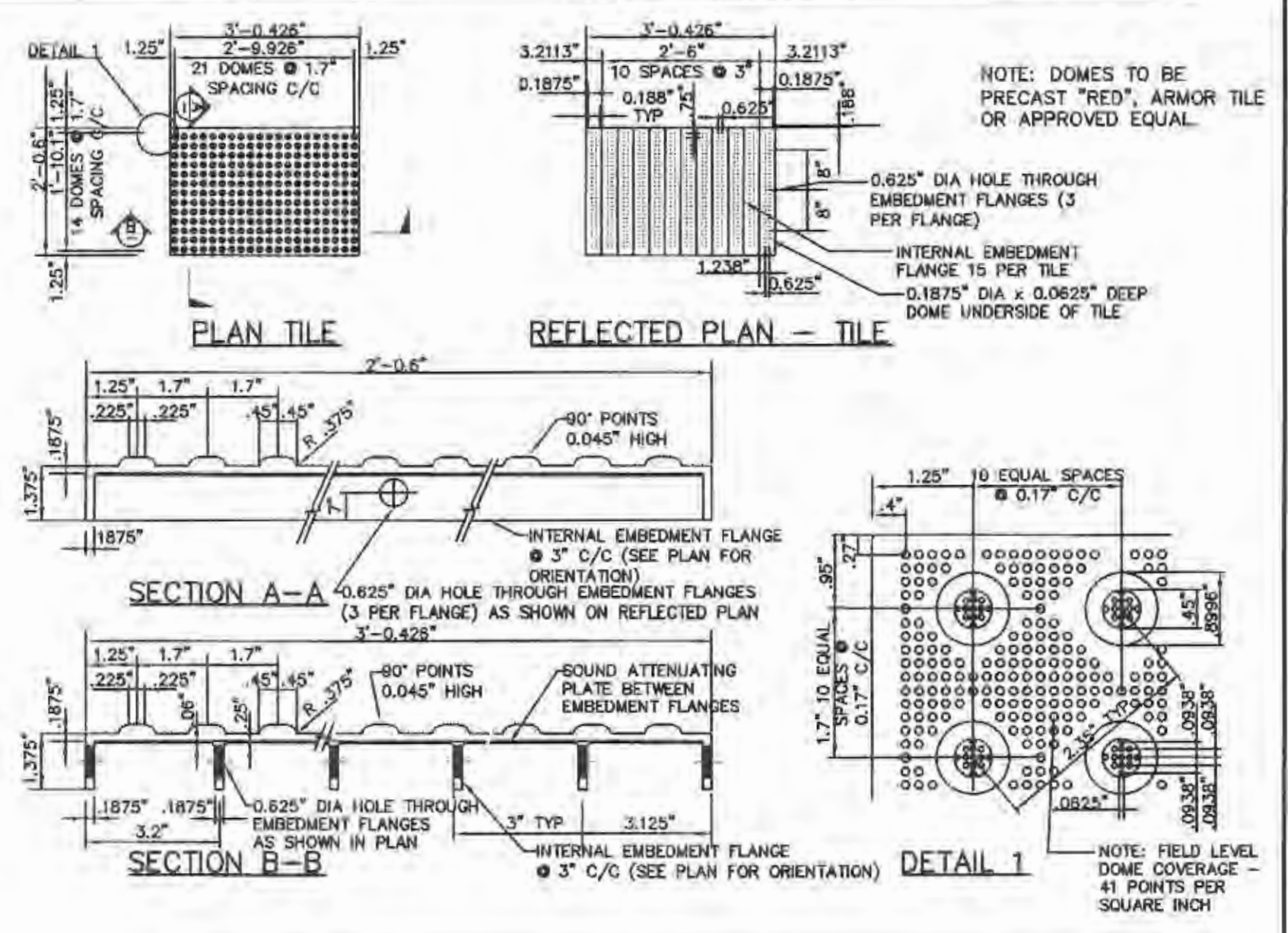
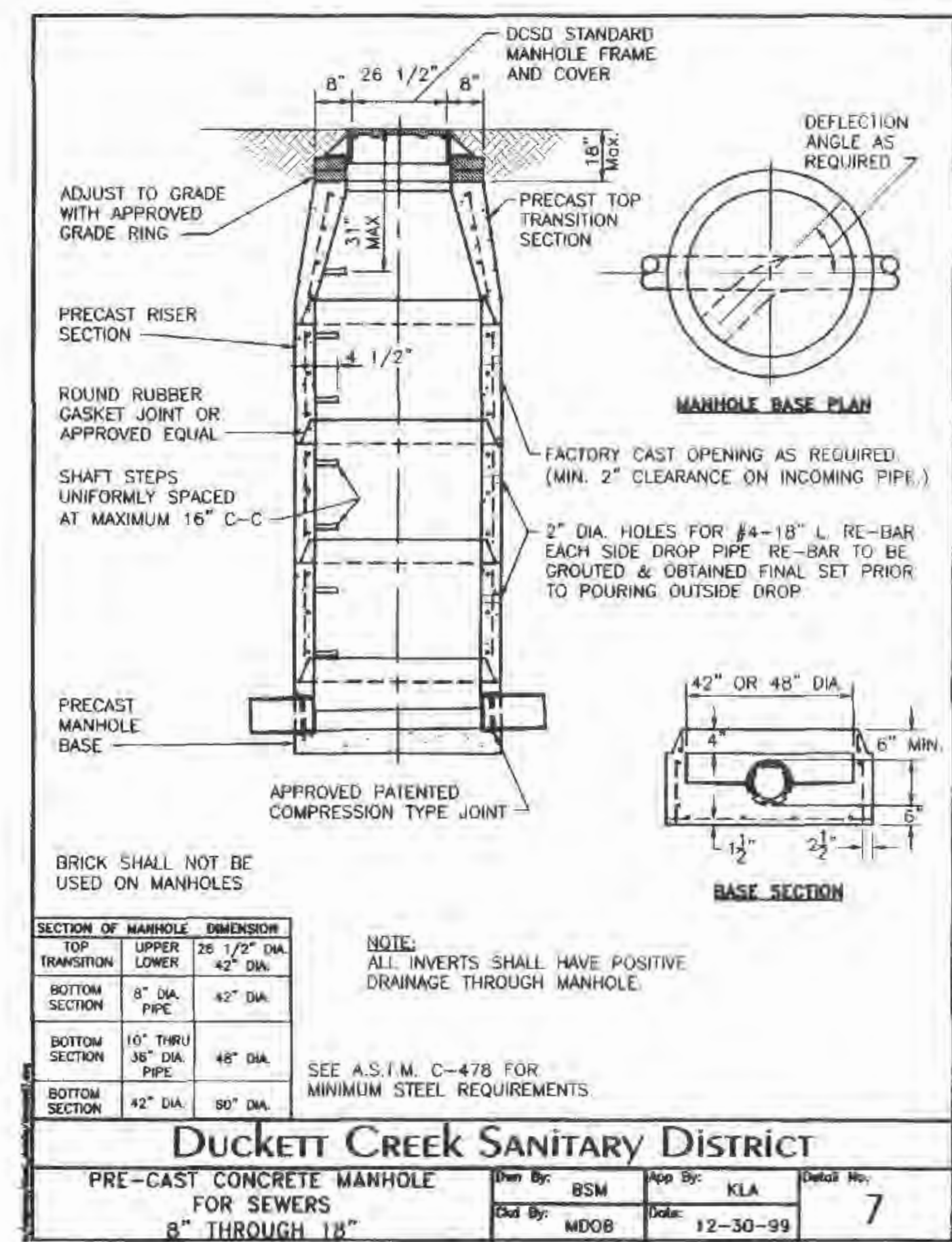
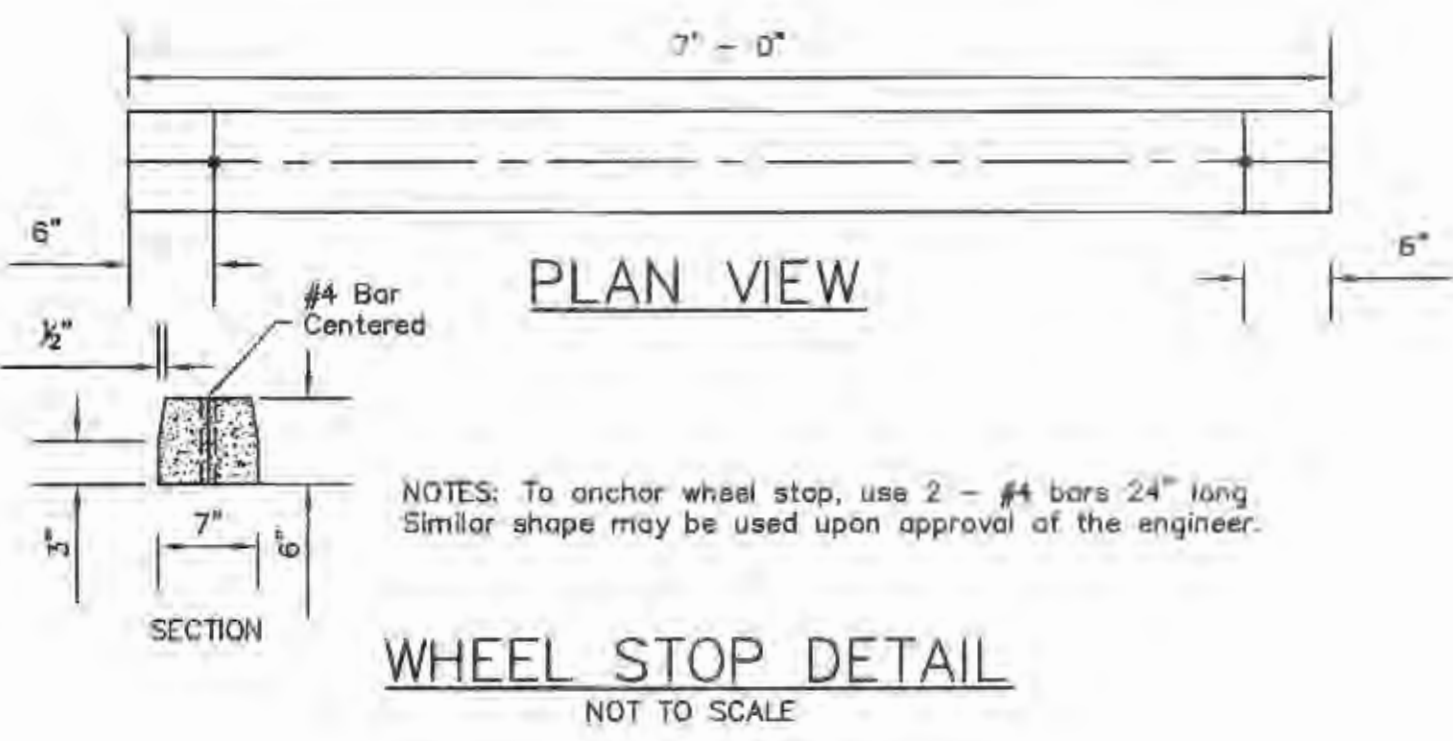
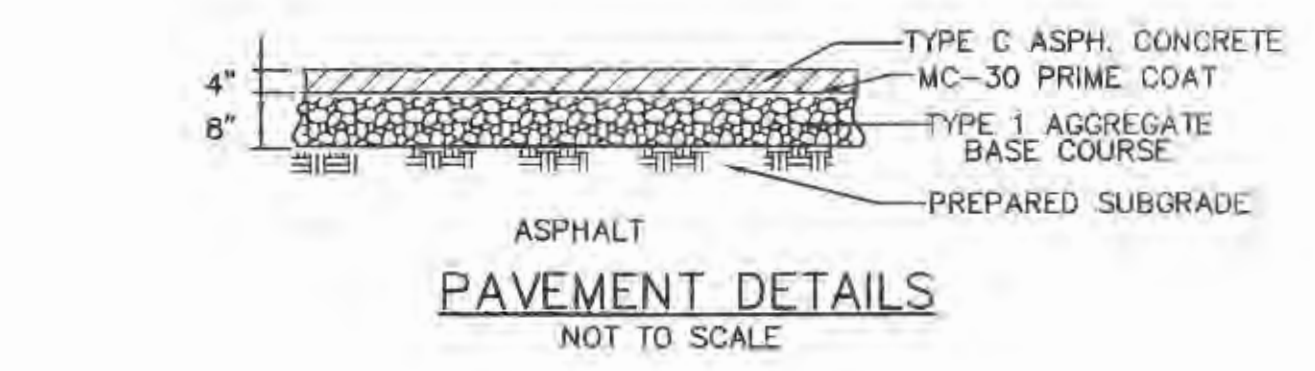
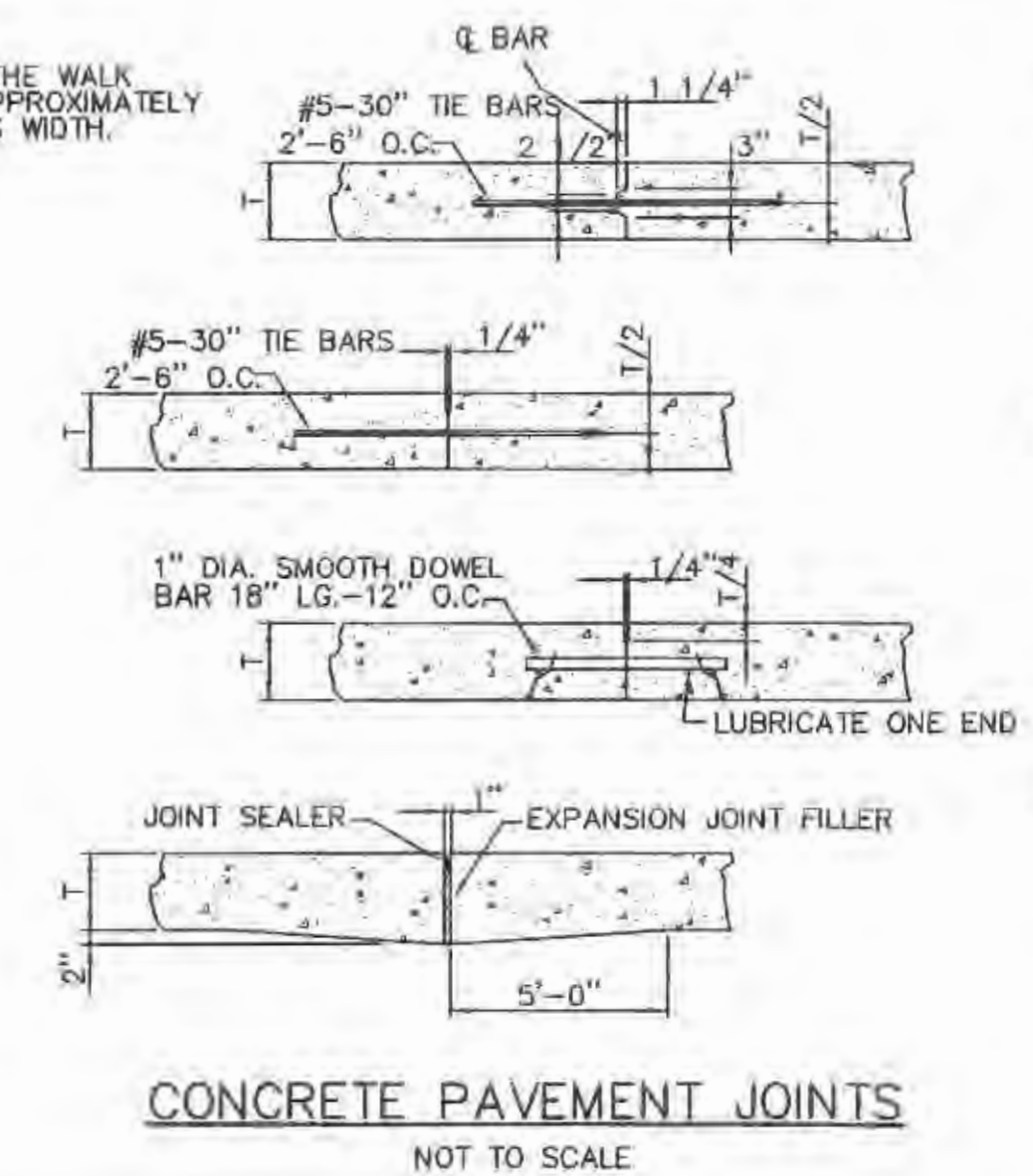
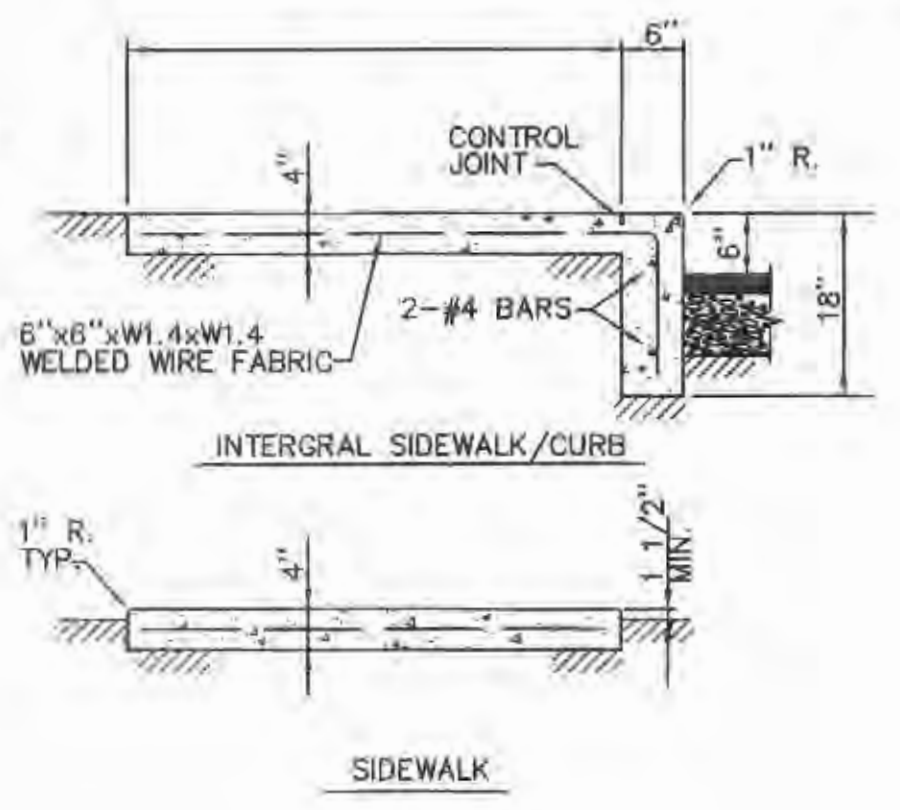
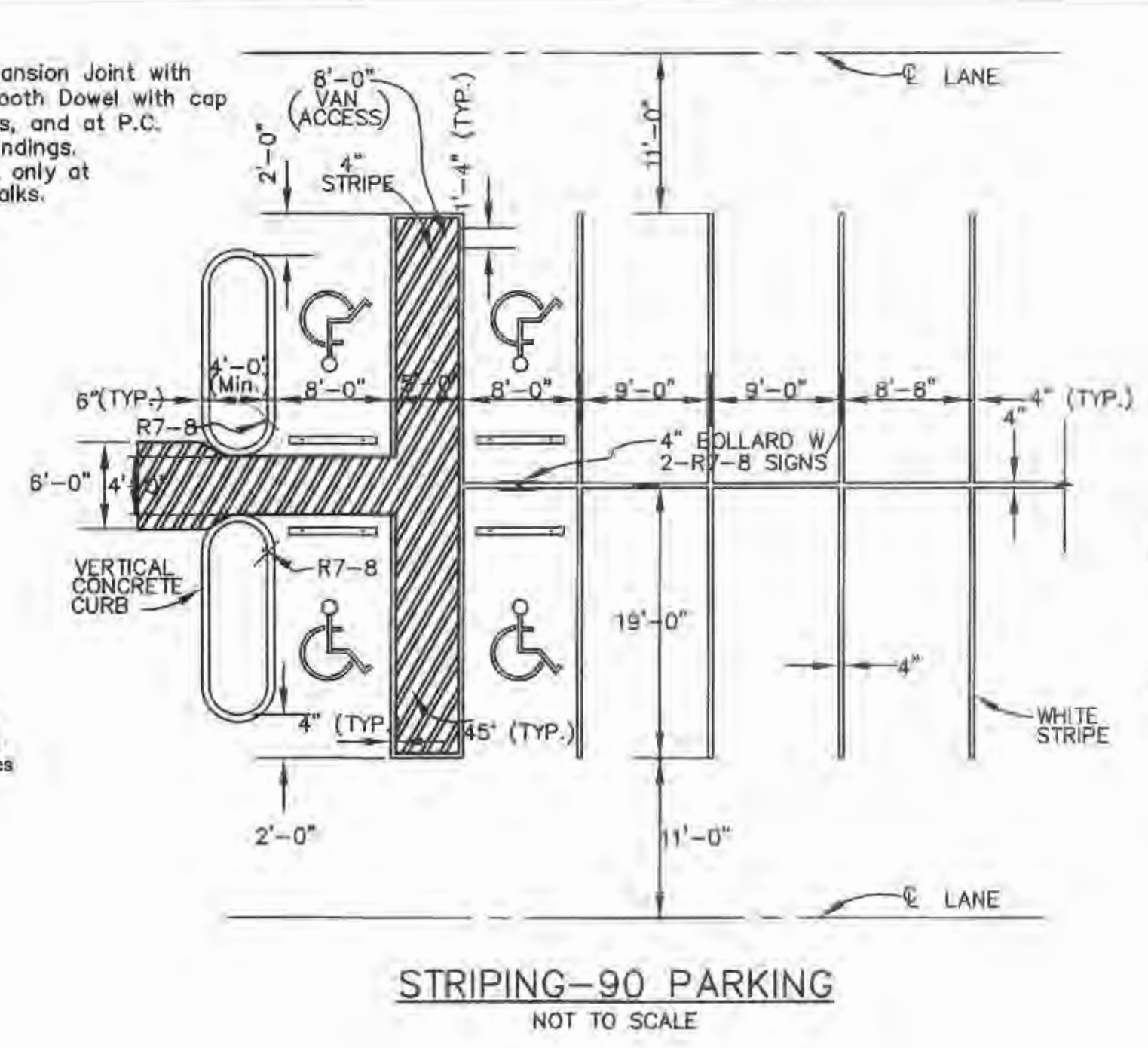
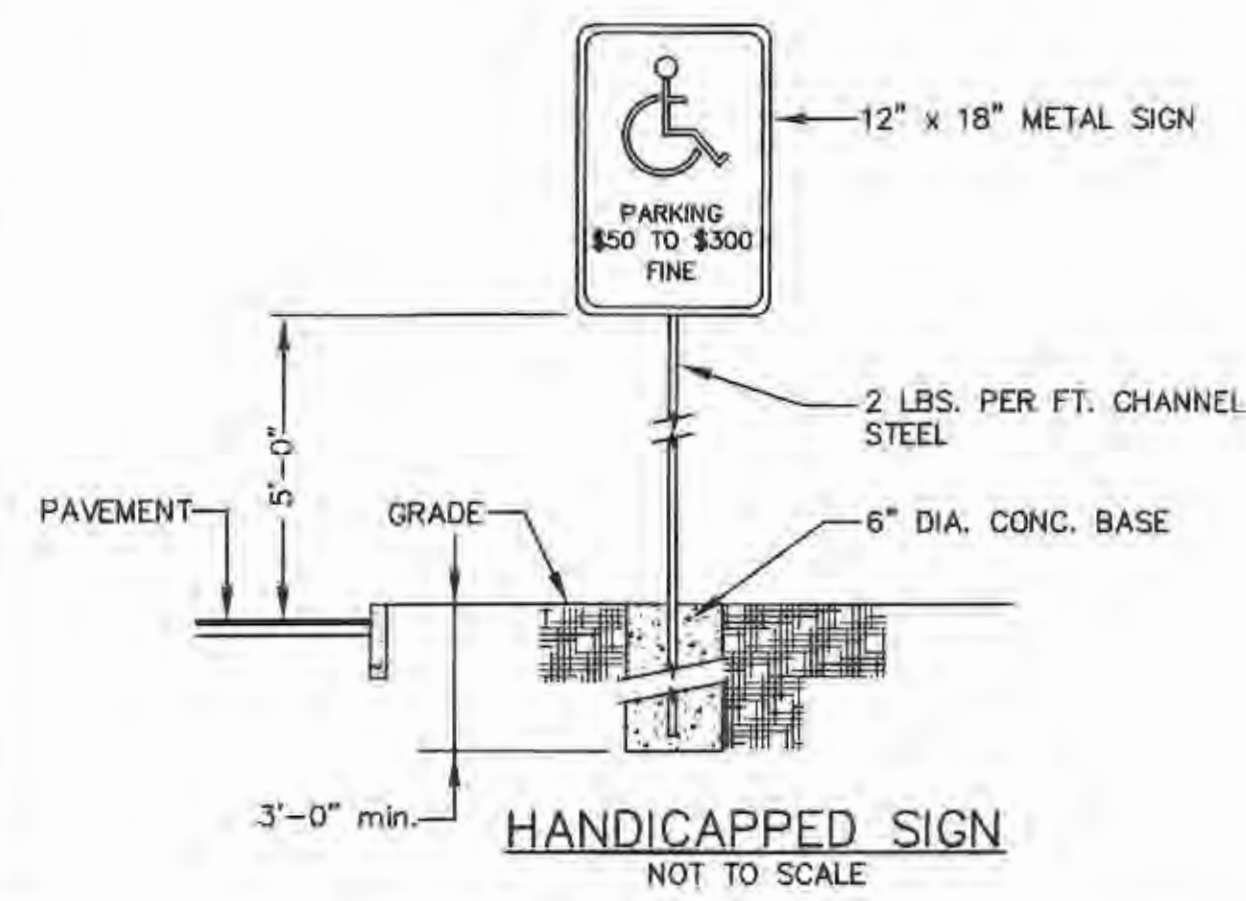


SIGN NOTE: All sign post and backs and bracket arms shall be painted black, using Carboline Rustbond Penetrating Sealer SG and Carboline 133 HB paint (or equivalent as approved by City and MoDOT). Signs designating street name shall be on the opposite side of the street from traffic control signs.



The signed and sealed original of this drawing is on file at the offices of The Clayton Engineering Company, Inc. The signed and sealed original is the official document and shall take precedence over any digital version.

DESIGNED BY: BSM	APP'D BY: KLA	DATE: 12-30-99	DETAIL NO: 7
------------------	---------------	----------------	--------------

REVISIONS

PAVING DETAILS
SKILLED CARE EXPANSION

Highway N and Twin Chimneys Boulevard, O'Fallon, Missouri 63366

Prepared for:
DELMAR GARDENS ENTERPRISES, INC.
14805 N. Outer 40
Chesterfield, MO 63017
636-733-7000

Copyright 2009 Clayton Engineering Co. All Rights Reserved.

the clayton engineering company, inc.
ENGINEERS • SURVEYORS • PLANNERS
1920 WESTLINE INDUSTRIAL DRIVE
ST. LOUIS, MISSOURI 63146
(314) 892-8888 FAX: (314) 892-8688
clayton-engineering.com
Mo Cert. of Authority: Prof. Engineering #00067 & Prof. Surveying #000314

Designed: RKF
Drawn: RKF
Checked: MJV
Date: 01/29/08
Project Number: 00228.11
Sheet Number: C-6 of 10