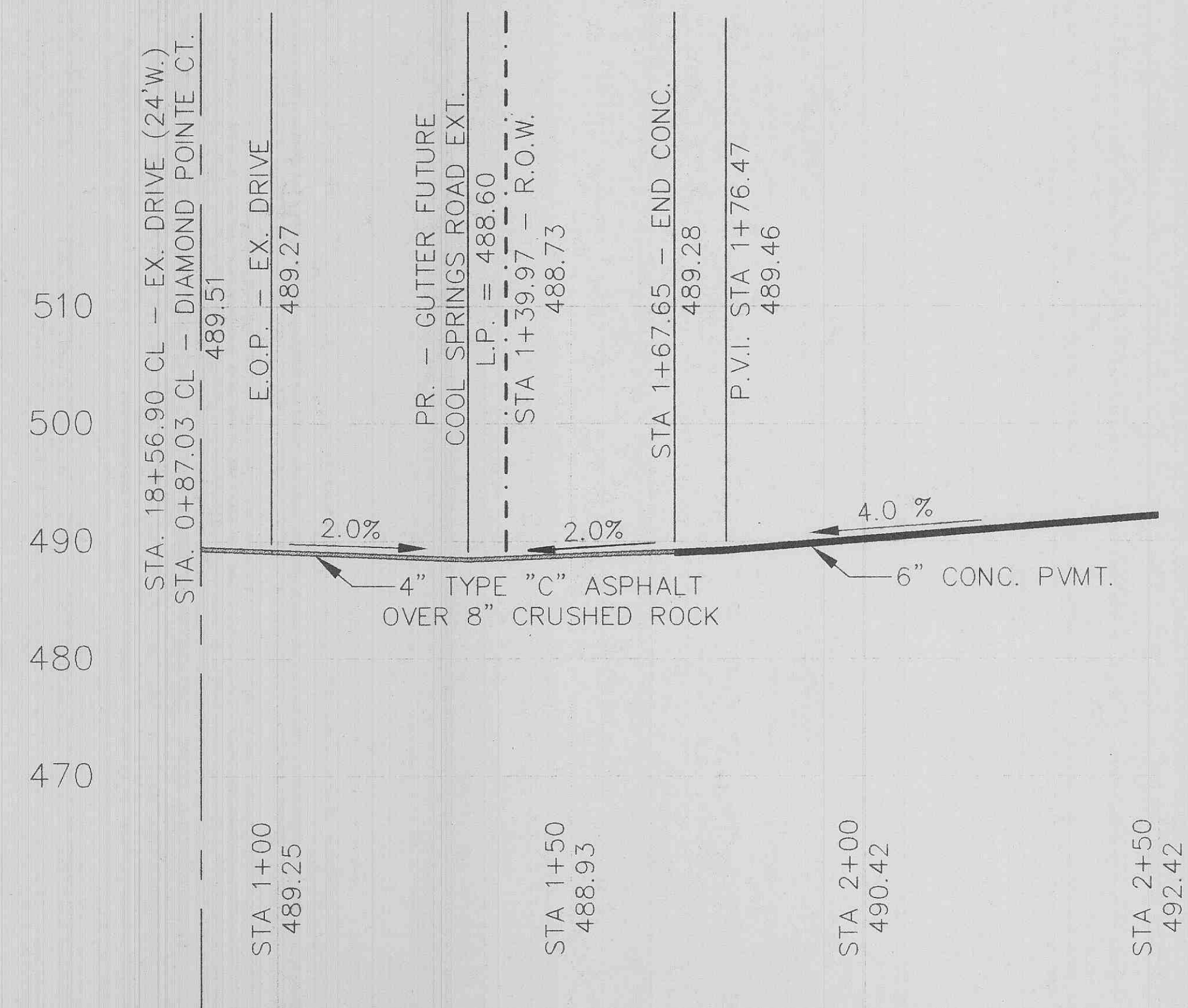
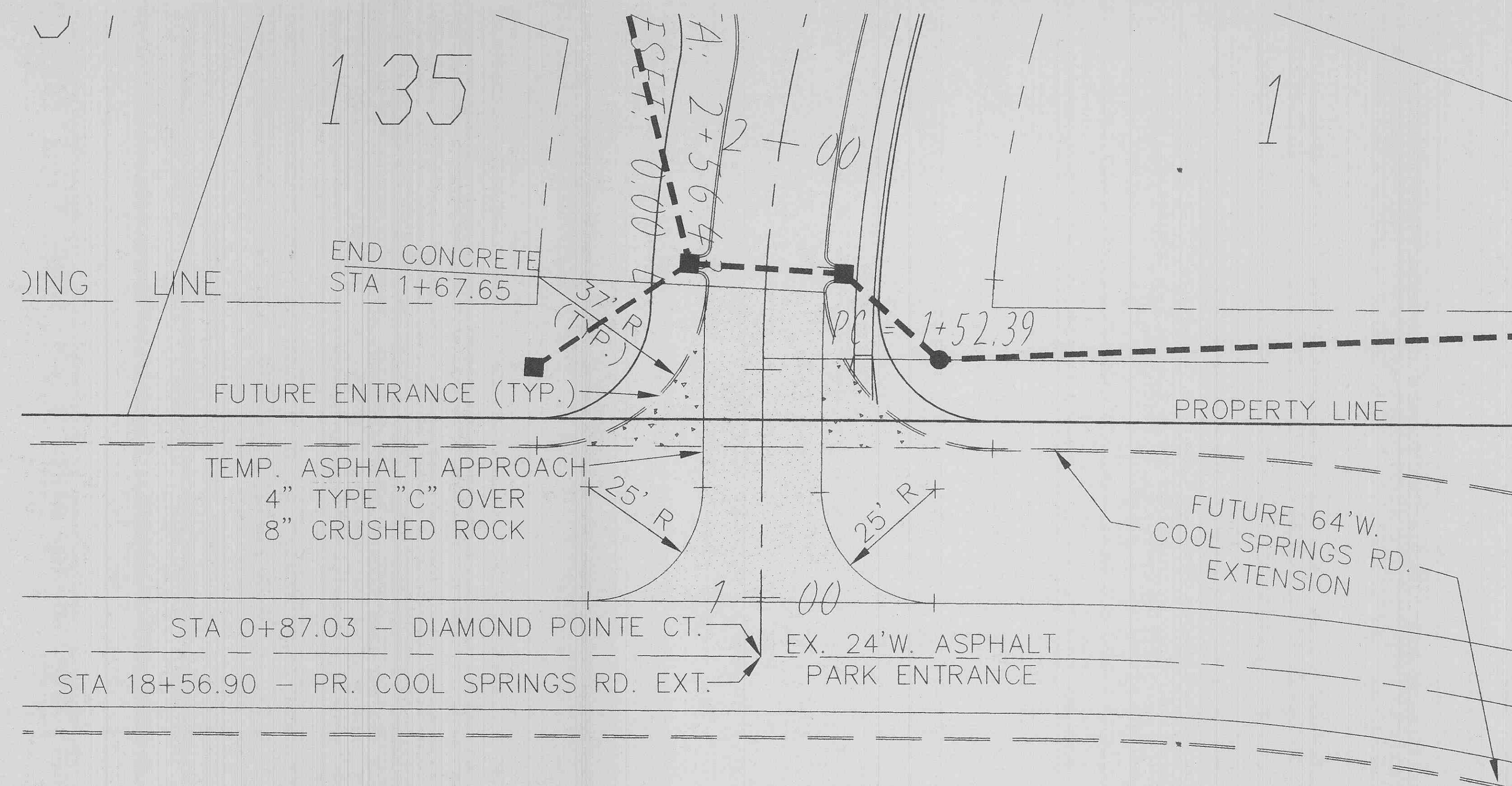


# ENTRANCE PLAN FOR DIAMOND POINTE PHASE ONE

**A TRACT OF LAND BEING PART OF THE NE 1/4 OF THE  
SE 1/4, PART OF THE SE 1/4 OF THE NE 1/4 OF SEC. 21 AND  
PART OF THE NW 1/4 OF THE SW FRAC. 1/4 OF SEC. 22,  
TOWNSHIP 47 NORTH, RANGE 3 EAST,  
ST. CHARLES COUNTY, MISSOURI**



ENTRANCE PROFILE SCALE: HORIZ. 1" = 20'  
VERT. 1" = 5'

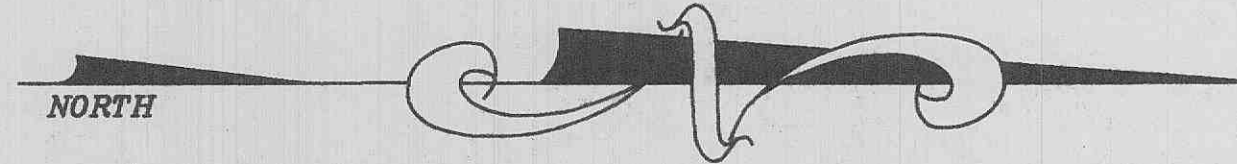


ENTRANCE PLAN SCALE: 1" = 20'

*File Copy*

**APPROVED**

*Contingent upon providing escrow to replace  
the temporary pavement with permanent pavement.  
9/14/97 Colleen Young*



DATE:	NO.:	REVISION:			
<b>MUSLER ENGINEERING COMPANY</b>					
CIVIL ENGINEERING - PLANNING - LAND SURVEYING					
6240 Mexico Road, St. Peters, Missouri 63376					
Telephone: (314) 441-4555					
DATE:	DRAWN:	CHECKED:	PROJECT NO.:	SHEET NO.:	
21 AUG. 1997	J.R.S.		96-257R3	1 OF 1	