

FOREST PARK ADDITION
 NO. 3 Plat 3
 Plat Book 12, Page 30
 R1

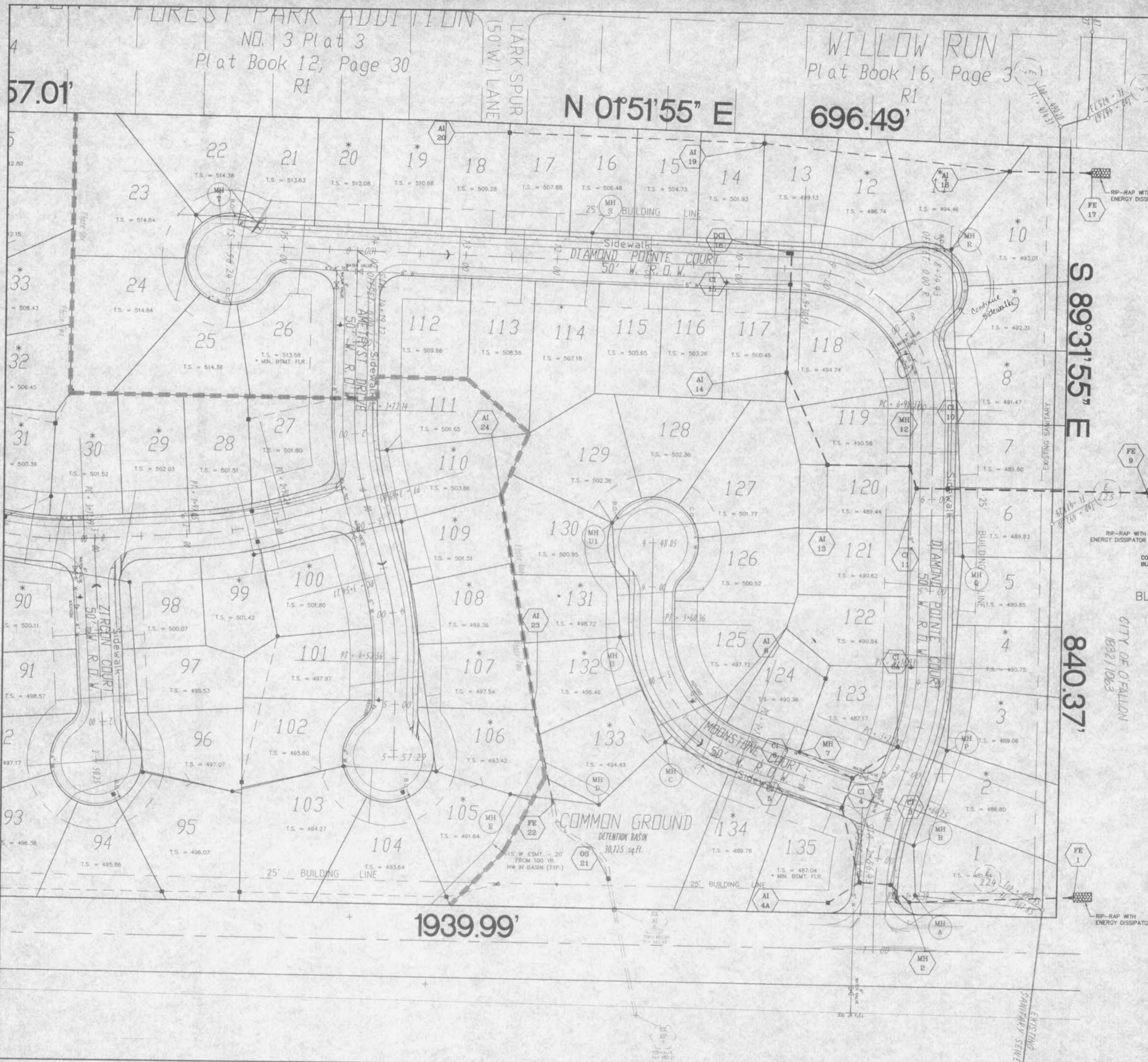
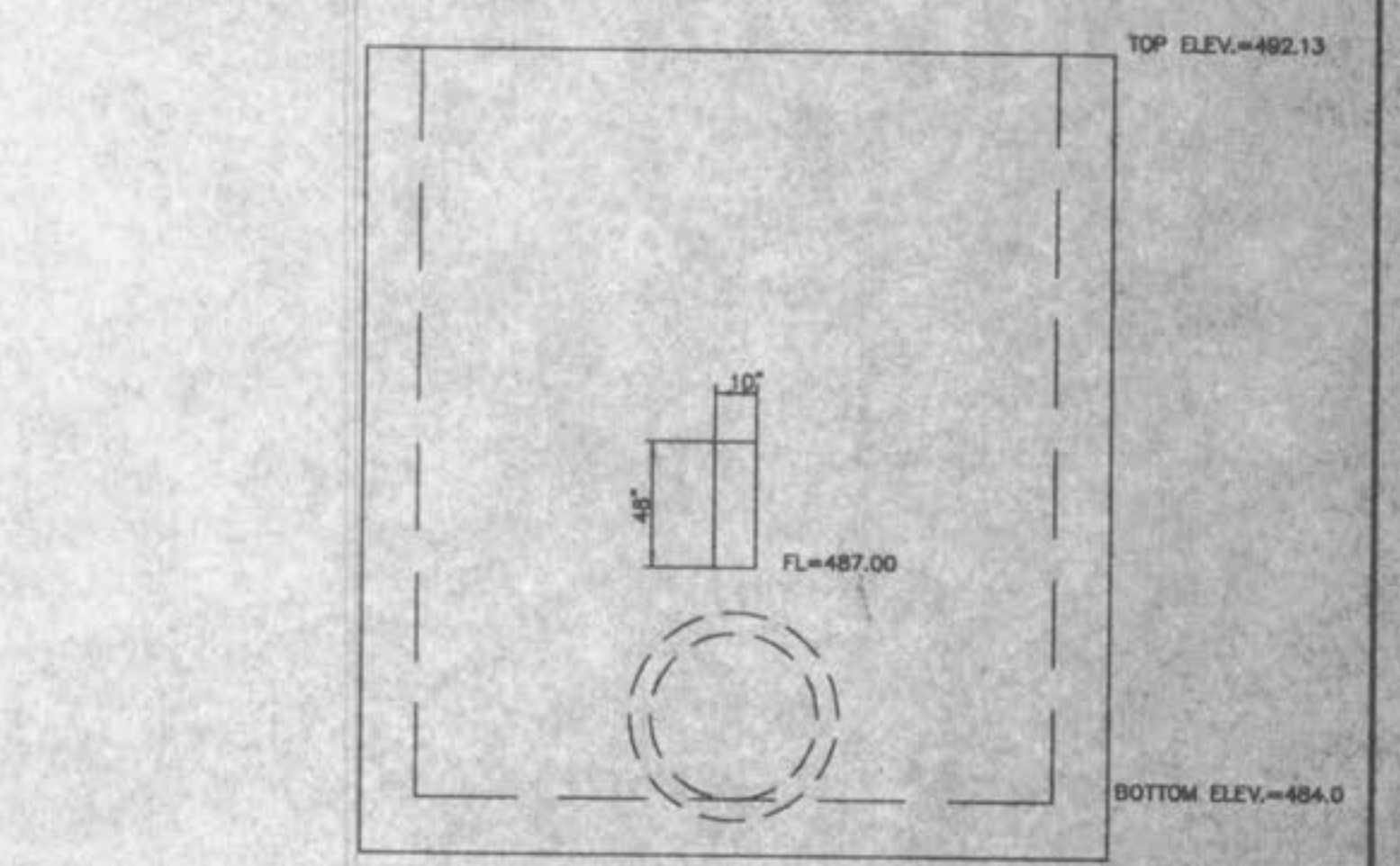
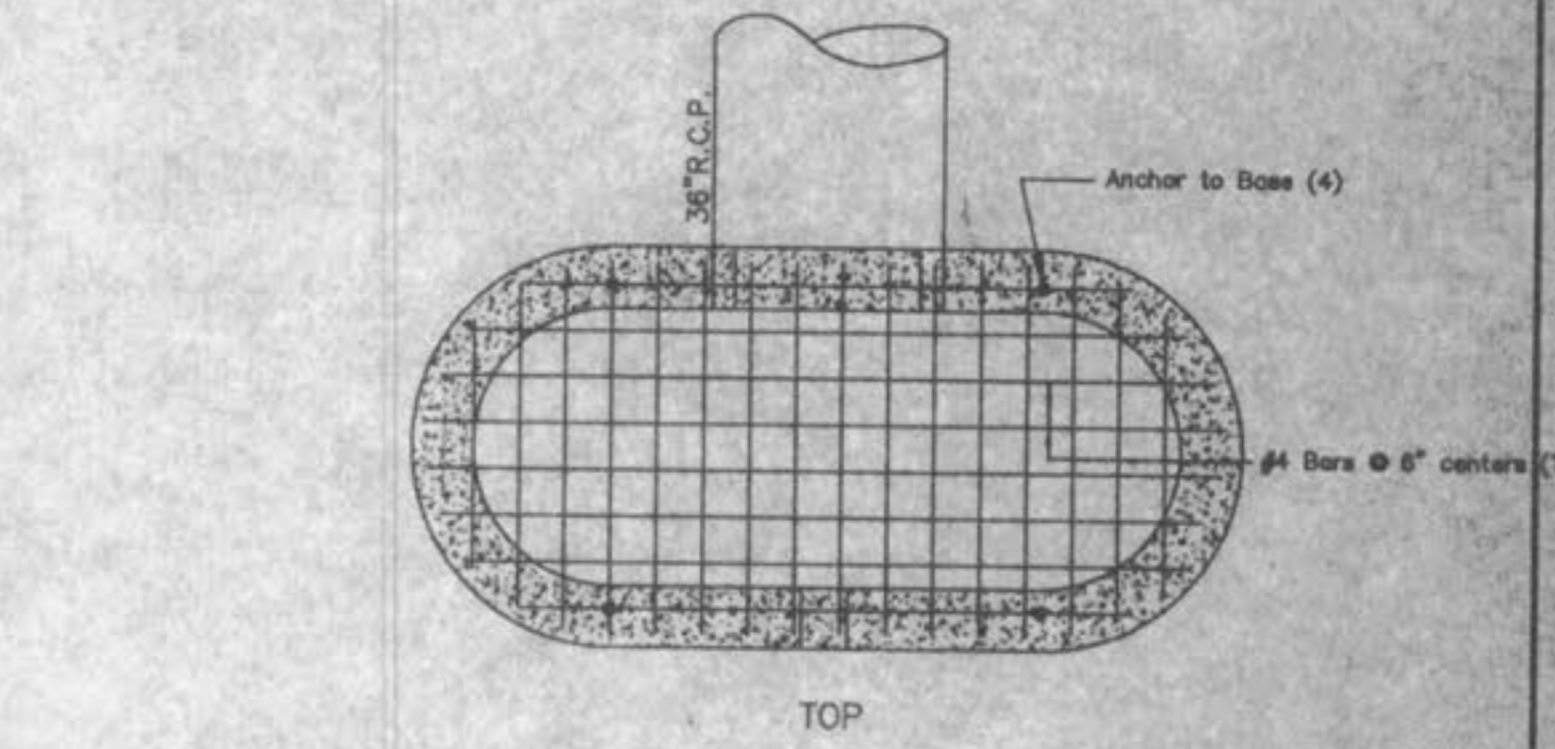
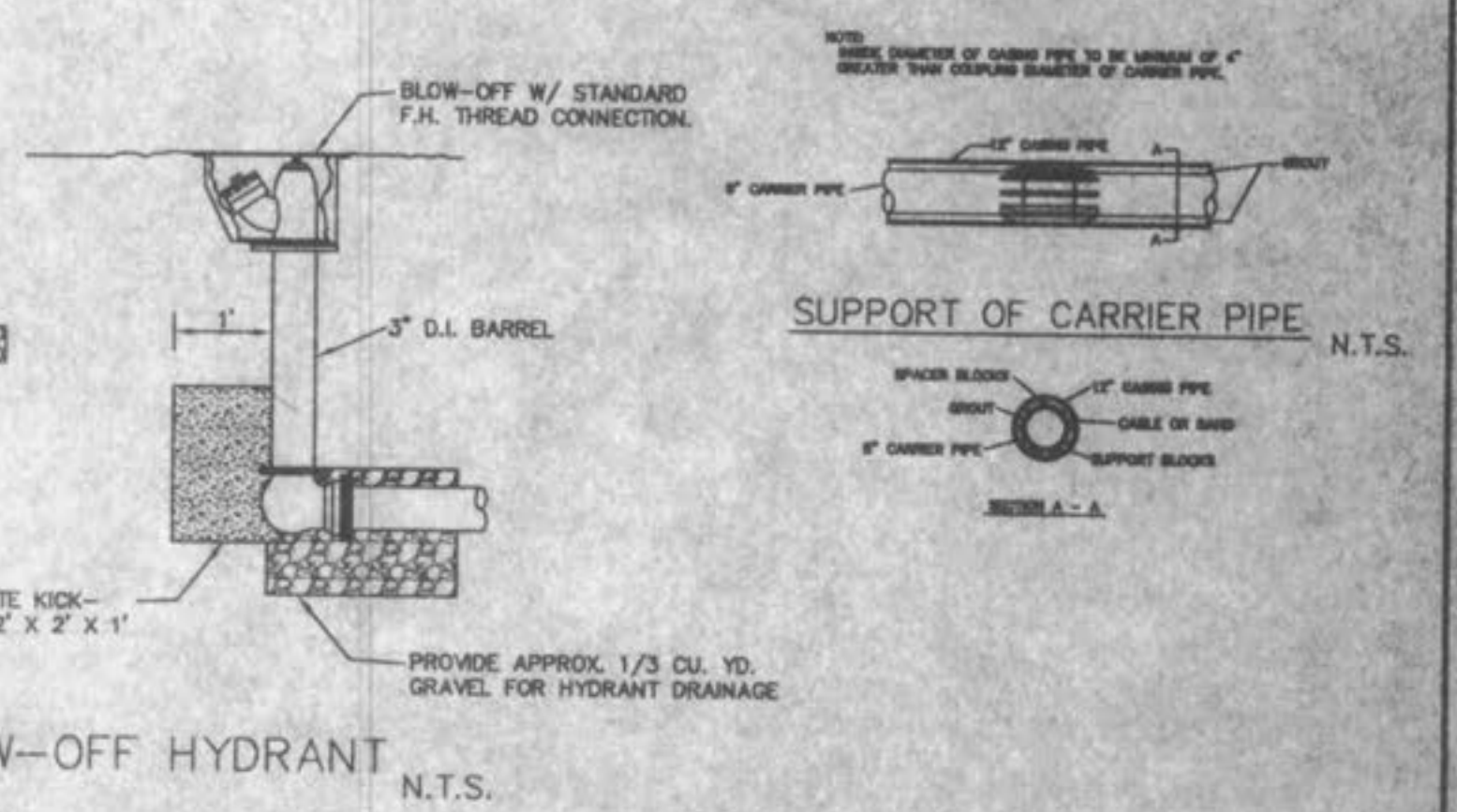
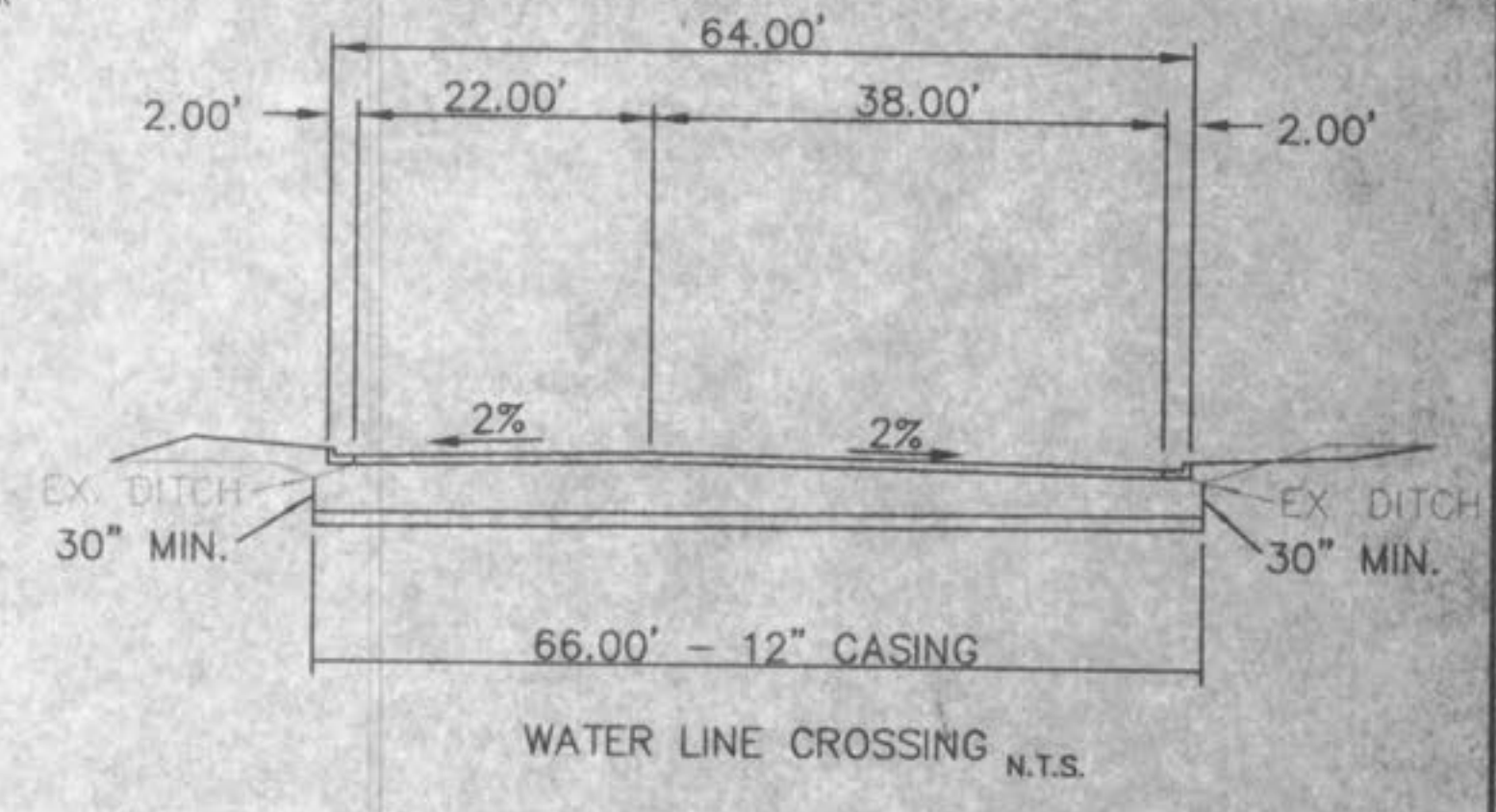
WILLOW RUN
 Plat Book 16, Page 3
 R1

FLAT PLAN
DIAMOND POINTE
 REV. 5 AUG. 1997 98-257R3

N 0°51'55" E
 696.49'



NOTE: WATER VALVES AT THE FOLLOWING LOCATIONS ARE NOT TO BE INSTALLED UNDER RIP-RAP
 1) AT BUBBLE ON DIAMOND POINTE COURT.
 2) AT INTERSECTION OF DIAMOND POINTE COURT AND MOONSTONE COURT.
 3) AT INTERSECTION OF DIAMOND POINTE COURT AND AMETHYST DRIVE.



3/13