

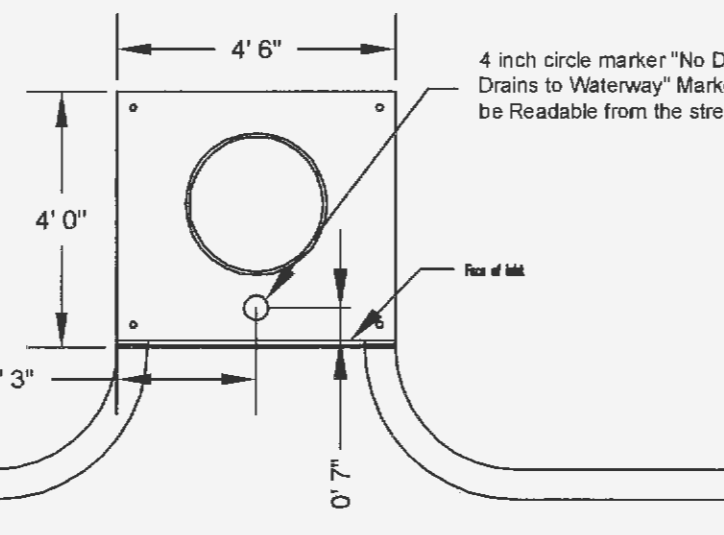
* The discharge point of all flared end sections shall be protected by rip rap or other approved means.
 ** Rip rap shown at flared end sections will be evaluated in the field by the Engineer, Contractor, and City Inspectors after installation for effectiveness and field modified, if necessary to reduce erosion on and off site.

MSD Type 5 Rock Blanket (% By Weight Passing)

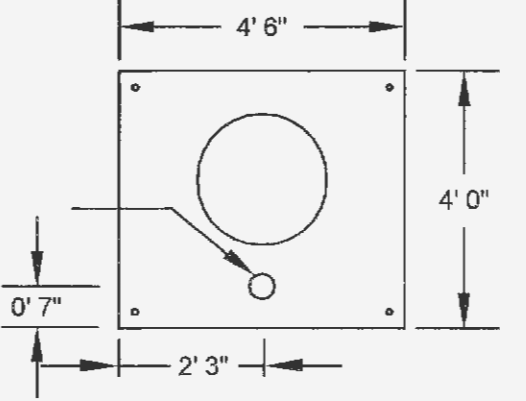
Sieve	Maximum	Minimum
12 inch	90	70
6 inch	30	10
1/2 inch	5	0

* The City of O'Fallon must be provided with a symbol/medallion for review and approval prior to installation. Contact the City if any information is needed.

Size	Style	Adhesive	Message (Part #)
3 7/8" TO 4"	Crystal Cap or Standard Style	Epoxy	No Dumping Drains to Waterway



4 inch circle marker "No Dumping Drains to Waterway" Marker shall be readable from the street.



PLAN VIEW OF AREA INLET

STORM DRAIN MARKER LOCATION

NYLOPLAST 18" INLINE DRAIN: 2718AG __ X

(INSTALL 18" DOMED GRATE IN LOCATIONS INDICATED ON PLANS, SEE DETAIL THIS SHEET)

MINIMUM PIPE BURIAL DEPTH PER PIPE MANUFACTURER RECOMMENDATION

TRAFFIC LOADS: CONCRETE SLAB DIMENSIONS ARE FOR GUIDELINE PURPOSES ONLY. ACTUAL CONCRETE SLAB DESIGN SHOULD TAKE INTO CONSIDERATION LOCAL SOIL CONDITIONS, TRAFFIC LOADS, & OTHER APPLICABLE DESIGN FACTORS. SEE DRAWING NO. T001-110-111 FOR NON TRAFFIC INSTALLATION.

(3) VARIOUS TYPES OF INLET & OUTLET ADAPTERS AVAILABLE: 4" - 18" FOR CORRUGATED HDPE (A85 N-12 HANCOCK DUAL WALL, A85 HANCOCK SINGLE WALL, N-12 HP, PVC SEWER (EX. SDR 35), PVC DWV (EX. SDR 40), PVC (CORROSION), CORRUGATED & RIBBED PVC (CORRUGATED HDPE SHOWN)

THE BACKFILL MATERIAL SHALL BE CRUSHED STONE OR OTHER GRANULAR MATERIAL MEETING THE REQUIREMENTS OF CLASS II MATERIAL AS DEFINED IN ASTM D2219. BEDDING & BACKFILL FOR SURFACE DRAINAGE INLETS SHALL BE PLACED & COMPACTED UNIFORMLY IN ACCORDANCE WITH ASTM D2321.

GRATE OPTIONS	LOAD RATING	PART #	DRAWING #
PERFORATED	MEETS 11-20	189CGD1	7801-110-212
STANDARD	MEETS 11-20	189CGD2	7801-110-213
DOMED	N/A	189CGD3	7801-110-214
GRATE IN TRENCH	LOAD RATING	189CGD4	7801-110-214

THIS PRINT DISCLOSES SUBJECT MATTER IN WHICH NYLOPLAST HAS PROPRIETARY RIGHTS. THE RECEIPT OR POSSESSION OF THIS PRINT DOES NOT CONSTITUTE A LICENSE OR PERMISSION TO REPRODUCE OR TRANSMIT IN ANY MANNER OR BY ANY MEANS, ELECTRONIC OR MECHANICAL, INCLUDING PHOTOCOPYING, RECORDING, OR BY ANY INFORMATION STORAGE AND RETRIEVAL SYSTEM. PERMISSION IS GRANTED TO OTHERS TO REPRODUCE THIS PRINT FOR THE EXCLUSIVE USE OF THE CITY OF O'FALLON, MISSOURI.

DRAWN BY: EBC DATE: 4-24-10
 REVISIONS: EBC PROJECT NO: NAME: DATE: 3-19-10
 DWG SIZE: A SCALE: 1:20 SHEET: 1 OF 1 DWG NO.: 7803-110-027 REV: C

3126 VERNONA AVE
 BURNING BUSH, IA 50546
 PHN (712) 832-2443
 FAX (712) 832-2440
 www.nyloplast-usa.com

Nyloplast
 18" IN LINE DRAIN QUICK SPEC INSTALLATION DETAIL

PROJECT TITLE:
 SITE CONSTRUCTION PLANS
 DIRT CHEAP OF O'FALLON
 #708 MO. STATE HIGHWAY K
 O'FALLON, MISSOURI 63366

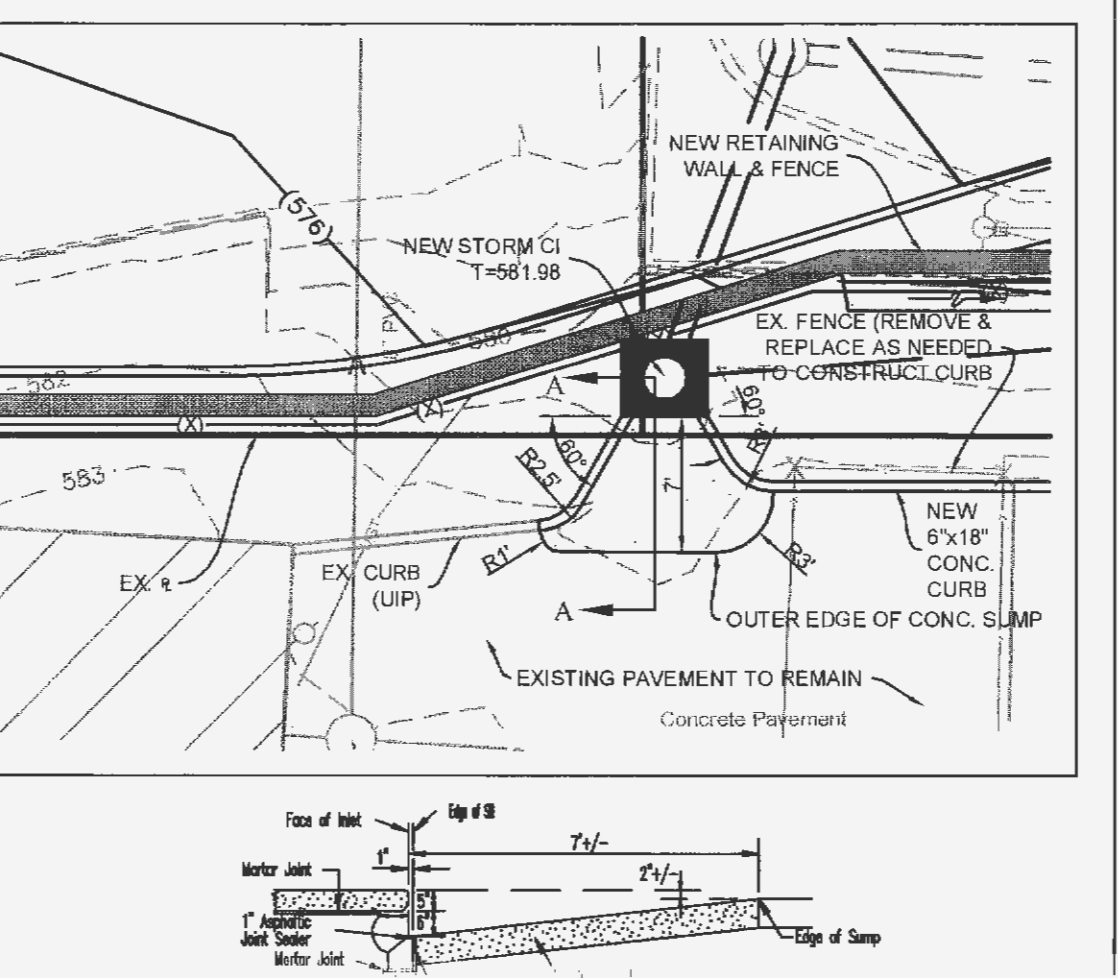
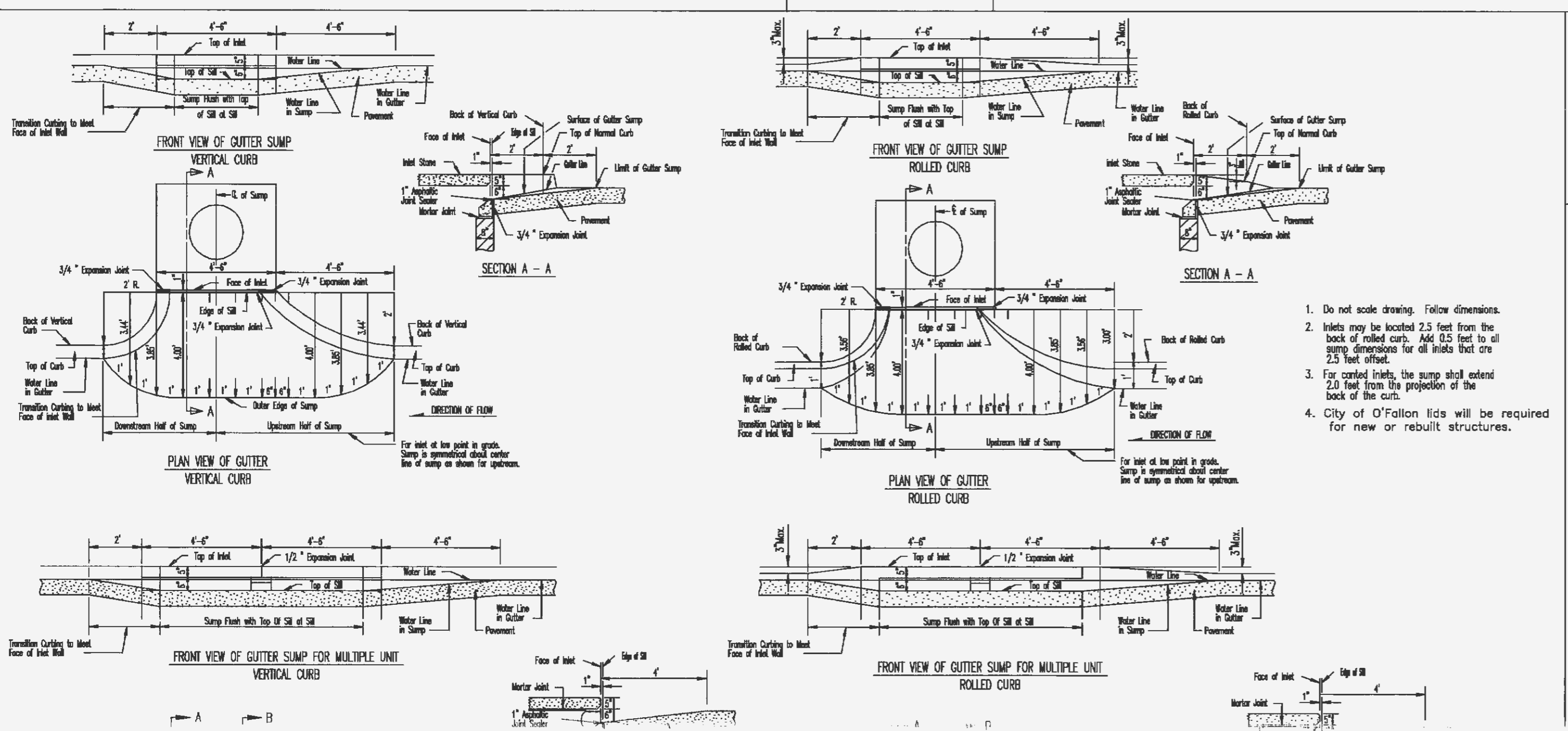
Copyright 2014
 Clayton Engineering Co.
 All Rights Reserved

the clayton engineering company, Inc.
 11920 Westline Industrial Drive
 St. Louis, MO 63146
 (314) 892-8888
 Fax: (314) 892-8888
 Email: info@claytoneng.com
 Job #: 10121

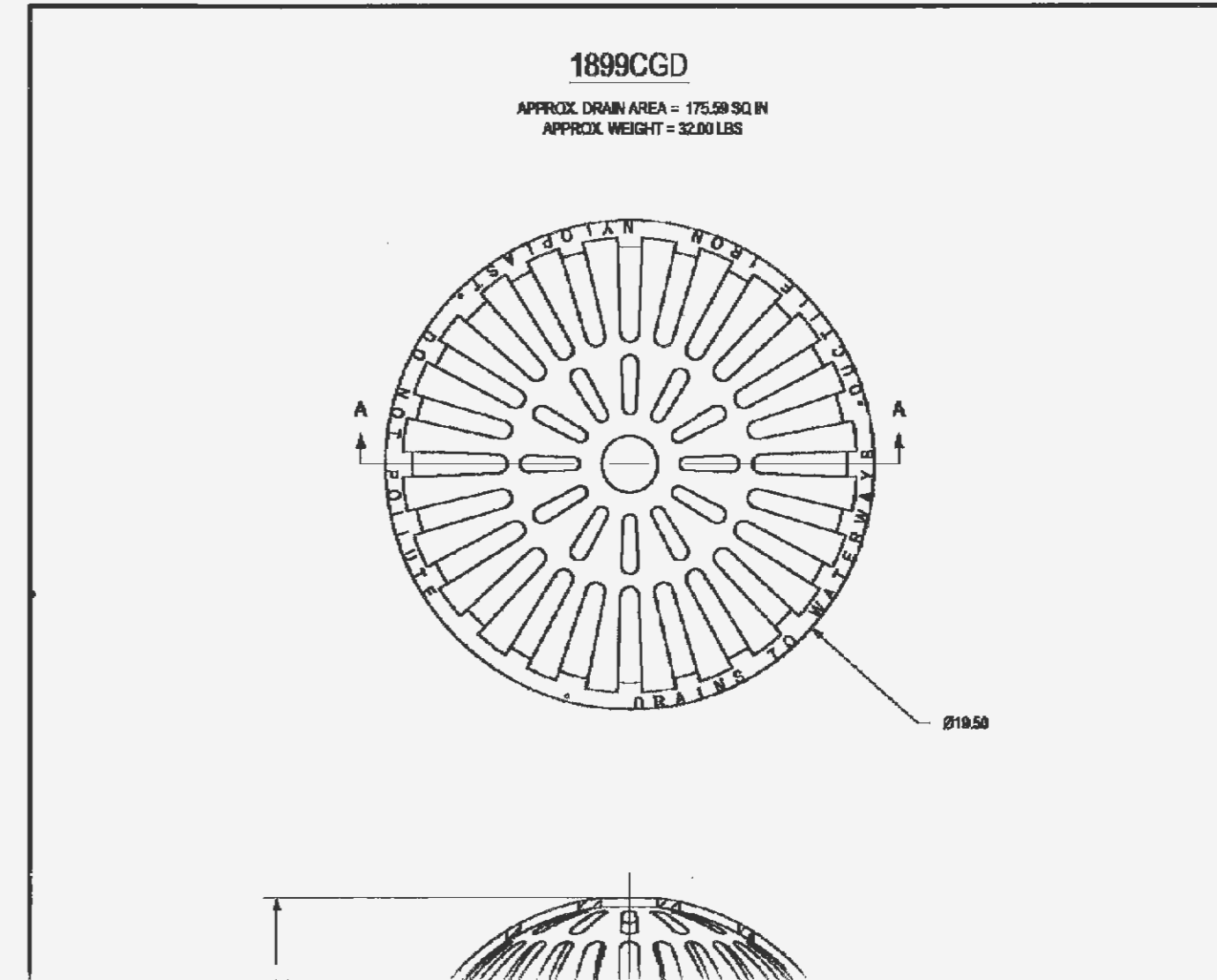
Professional Engineer #000607
 & Professional Surveying #000014



Plan Date: November 8, 2013
 Revision Date: April 28, 2014
 Revision Date: May 22, 2014
 Revision Date: August 1, 2014
 Revision Date: Sept. 4, 2014



- Do not scale drawing. Follow dimensions.
- Inlets may be located 2.5 feet from the back of rolled curb. Add 0.5 feet to all sump dimensions for all inlets that are 2.5 feet offset.
- For curbed inlets, the sump shall extend 2.0 feet from the projection of the back of the curb.
- City of O'Fallon lids will be required for new or rebuilt structures.



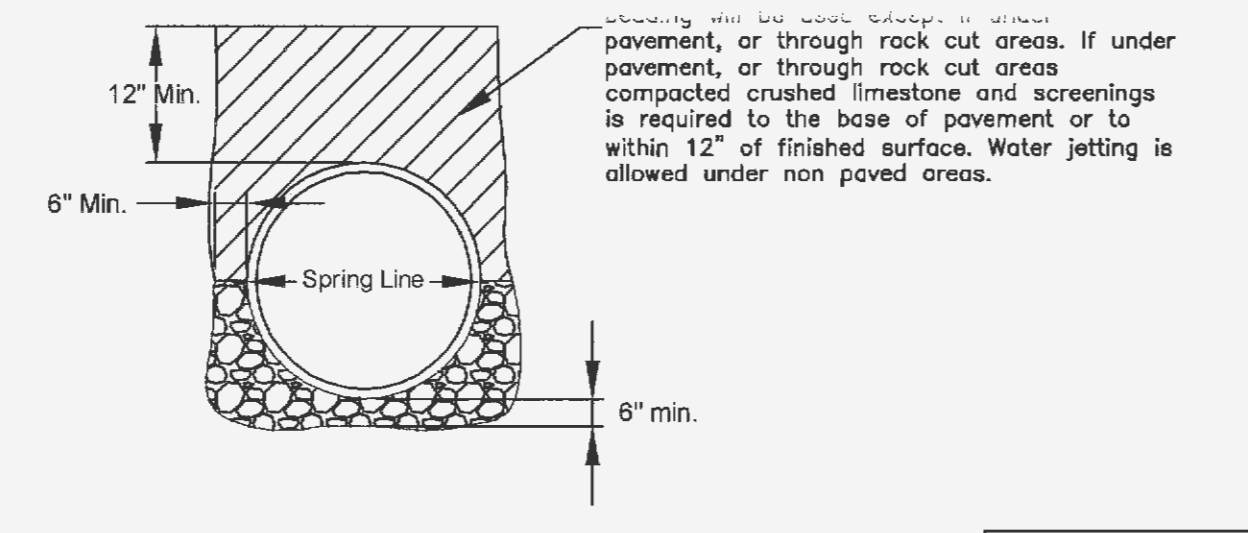
be by M.S.D. 2009 Standards and Specifications.



Underground facilities, structures & utilities have been plotted from available surveys, records & information, and therefore, do not necessarily reflect the actual existence, nonexistence, size, type, number of, or location of these facilities, structures, & utilities.

The Contractor shall be responsible for verifying the actual location of all underground facilities, structures, & utilities, either shown or not shown on these plans. The underground facilities, structures, & utilities shall be located in the field prior to any grading, excavation or construction of improvements. These provisions shall in no way absolve any party from complying with the Underground Facility Safety and Damage Prevention Act, Chapter 319, RSMo.

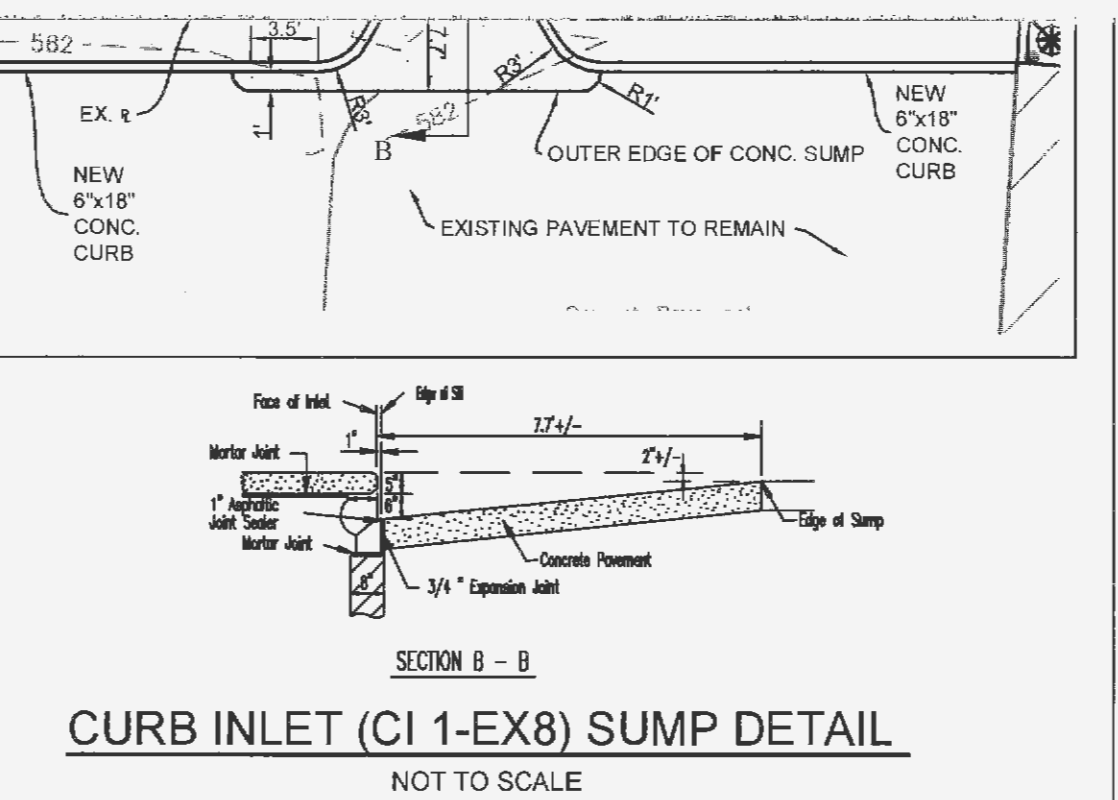
The signed and sealed original of this drawing is on file at the offices of The Clayton Engineering Company, Inc. The signed and sealed original is the official document and shall take precedence over any digital version.



When used on rock cut areas, it shall be placed on compacted crushed limestone and screenings as required to the base of pavement or to within 12" of finished surface. Water jetting is allowed under non paved areas.

CITY OF O'FALLON
 ENGINEERING DEPARTMENT
 O'FALLON, MISSOURI

TRENCH
 DETAIL



NOTE: CITY OF O'FALLON LIDS WILL BE REQUIRED FOR NEW OR REBUILT SEWER STRUCTURES. THIS DOES NOT INCLUDE NYLOPLAST STRUCTURES.

Developer
 U-GAS PR
 895 Bolger
 Fenton, Mo
 (636) 343-
 SEWE

P+Z No: (23-13.02)
 Approval Date: 10/03/13
 City No.

Page No.
 13 of 23