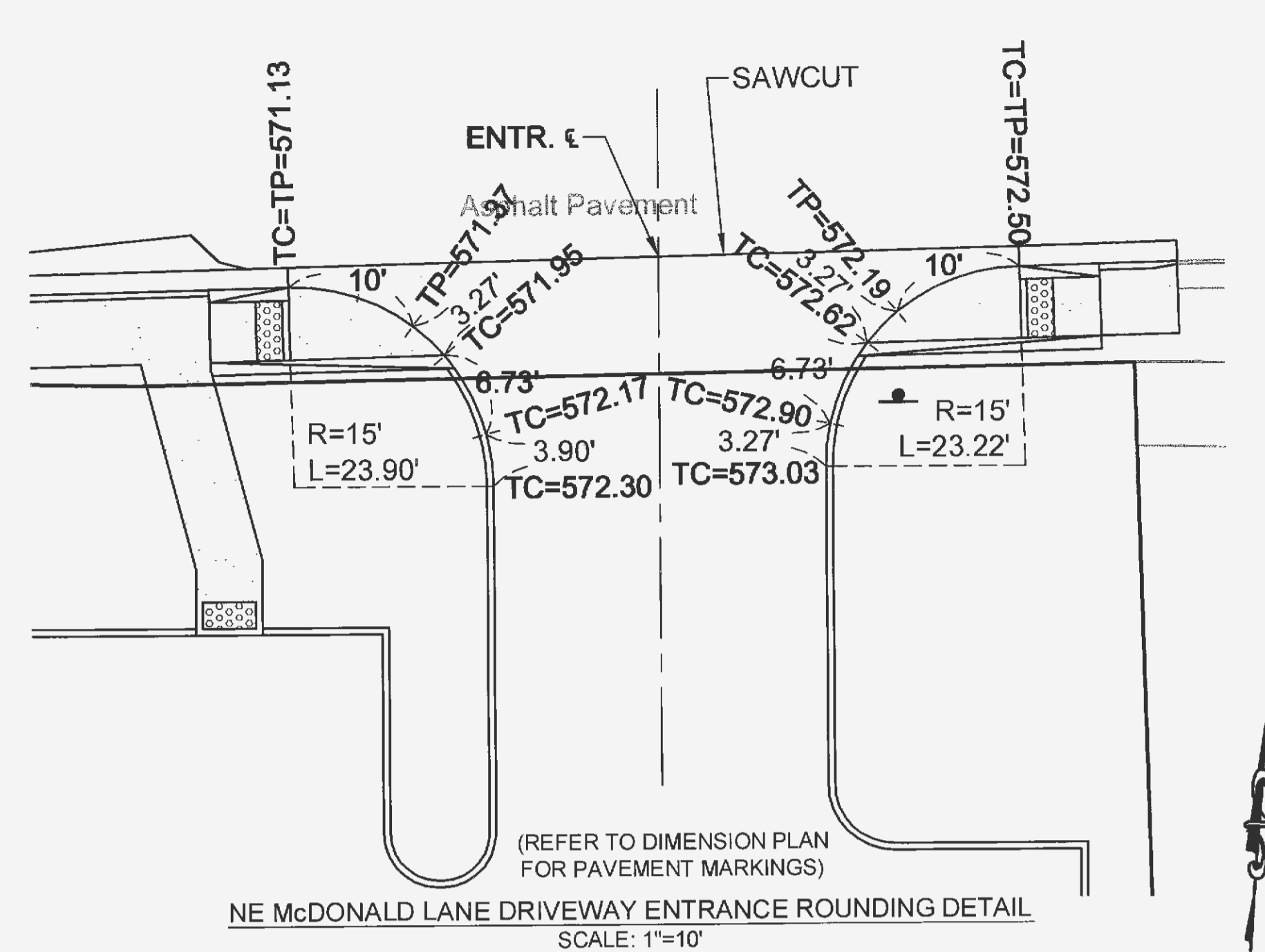
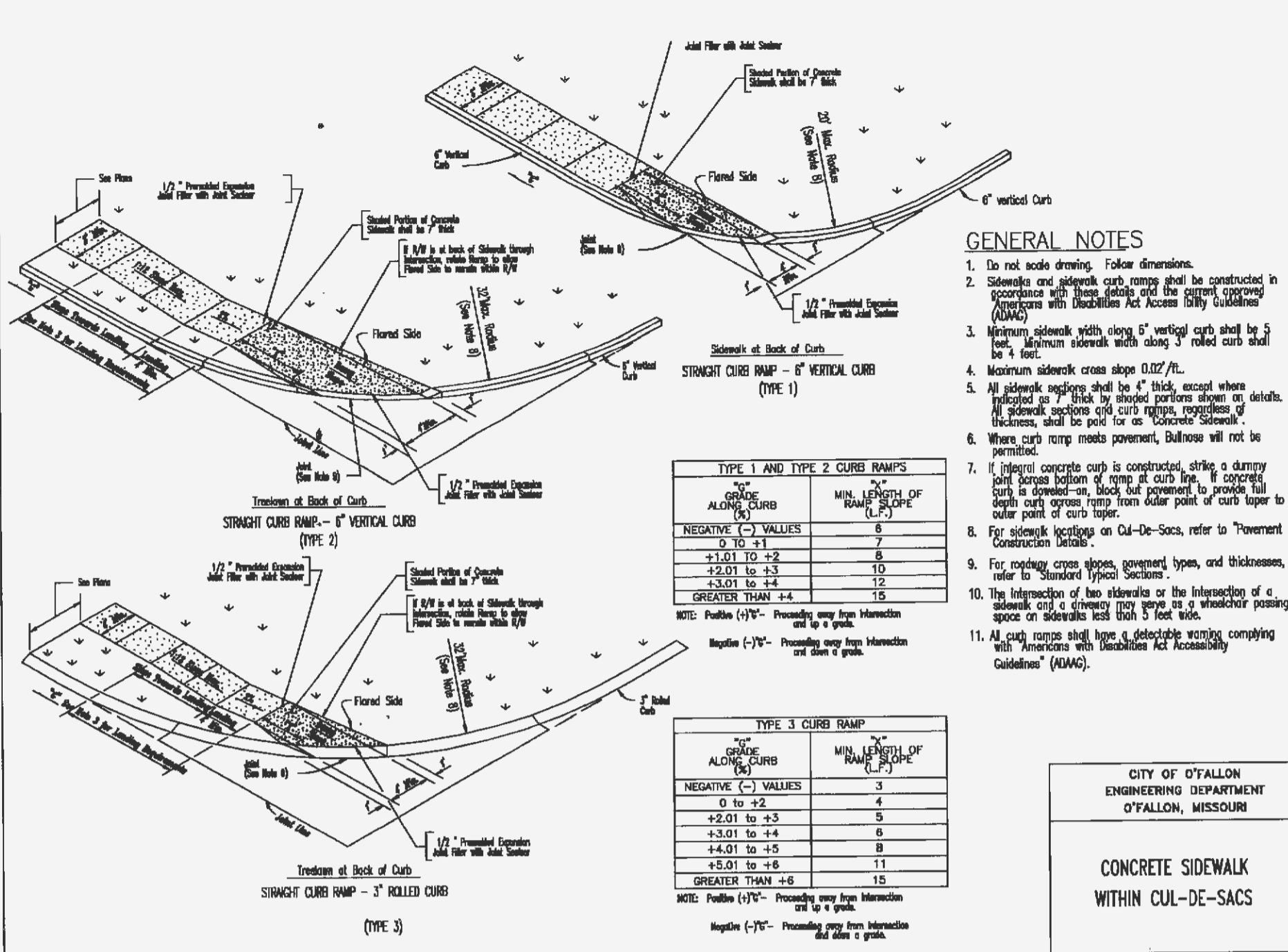


(REFER TO DIMENSION PLAN FOR PAVEMENT MARKINGS)
NW McDONALD LANE DRIVEWAY ENTRANCE ROUNDING DETAIL
 SCALE: 1"=10'



(REFER TO DIMENSION PLAN FOR PAVEMENT MARKINGS)
NE McDONALD LANE DRIVEWAY ENTRANCE ROUNDING DETAIL
 SCALE: 1"=10'



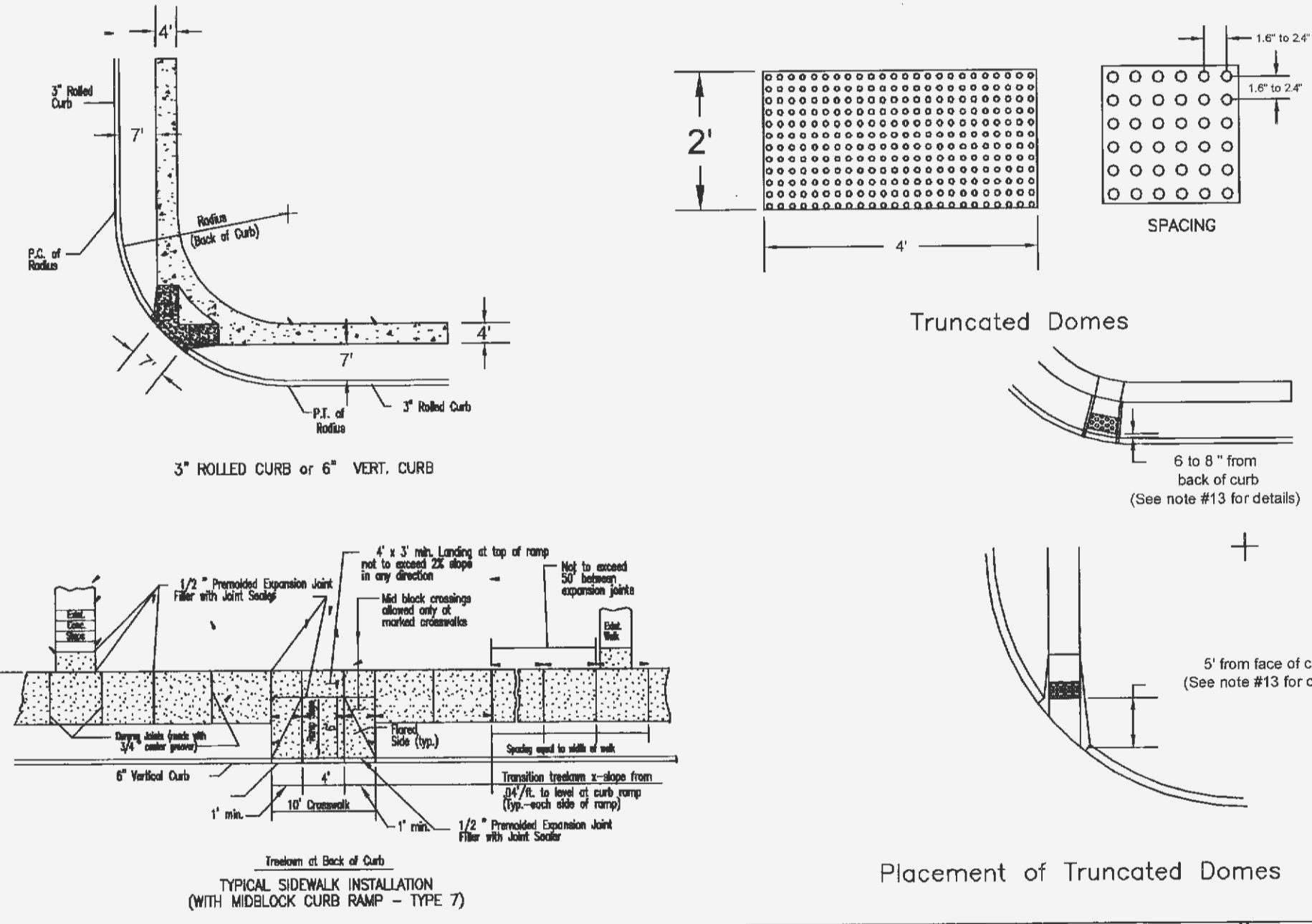
- GENERAL NOTES**
- Do not scale drawing. Follow dimensions.
 - Sidewalk and sidewalk curb ramps shall be constructed in accordance with these details and the current approved American with Disabilities Act Accessible Guidelines (ADAAG).
 - Minimum sidewalk width along 5' vertical curb shall be 5 feet. Minimum sidewalk width along 3' rolled curb shall be 4 feet.
 - Maximum sidewalk cross slope 0.02%/ft.
 - All sidewalk sections shall be 4" thick, except where indicated on 7' thick by shaded portions shown on details.
 - Where curb ramp meets pavement, Bullnose will not be permitted.
 - If integral concrete curb is constructed, strike a dummy joint across bottom of ramp at curb line. If concrete curb is dowelled on, back cut pavement to provide full depth curb across ramp from outer point of curb taper to outer point of curb taper.
 - For pavement longitudinal and transverse joints and dowel and tie bar requirements and dimensions, refer to the Pavement Construction Details for Joints and Curb.
 - For roadway cross slopes, pavement types, and thicknesses, refer to Standard Typical Sections.
 - The intersection of two sidewalks or the intersection of a sidewalk and a driveway may serve as a wheelchair passing space on sidewalks less than 5 feet wide.
 - All curb ramps shall have a detectable warning complying with Americans with Disabilities Act Accessibility Guidelines (ADAAG).

TYPE 1 AND TYPE 2 CURB RAMPS

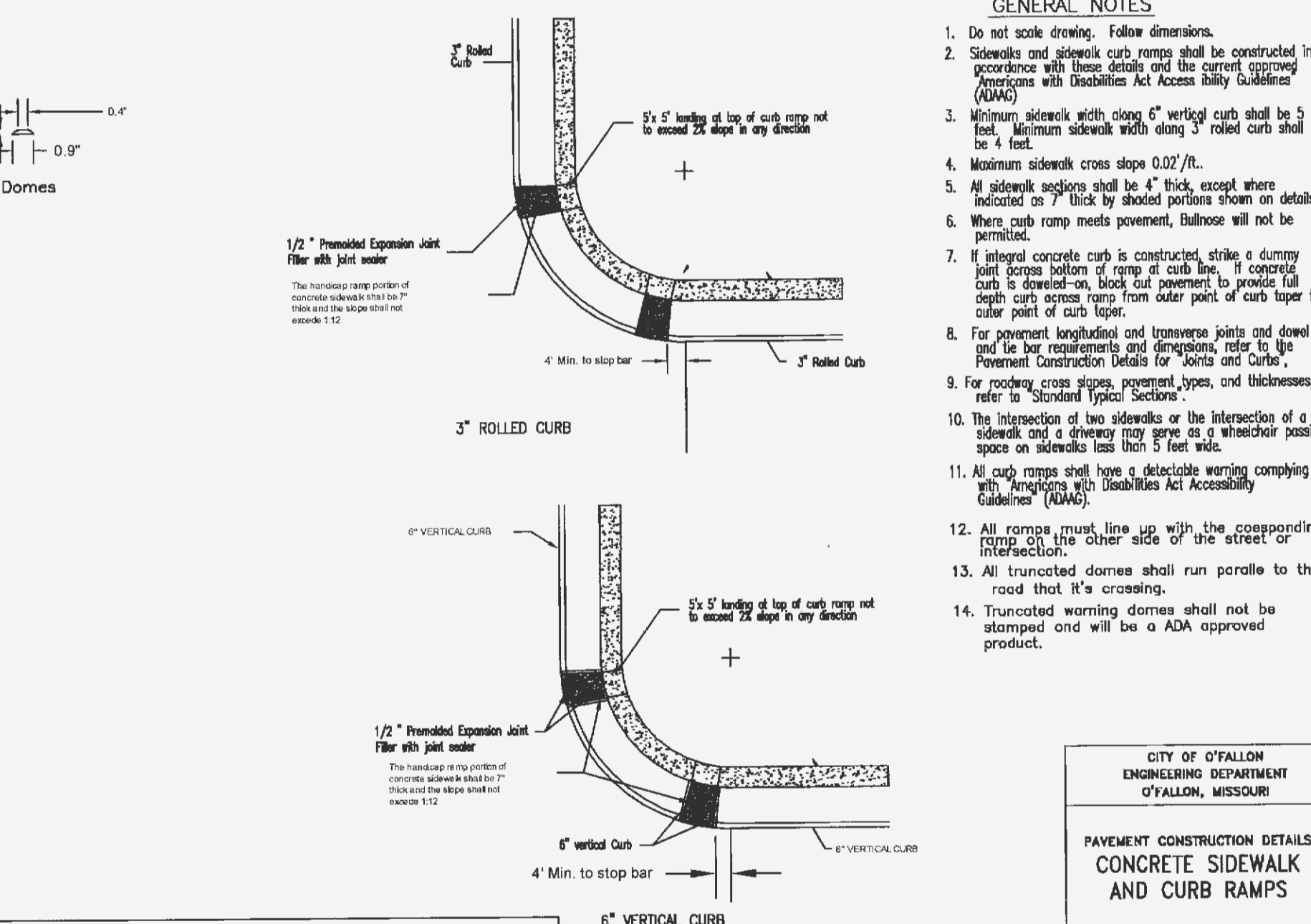
CURB RAMP ALONG CURB	MIN. LENGTH OF RAMP (ft.)
POSITIVE (+) VALUES	6
NEGATIVE (-) VALUES	6
+2.01 to +2	8
+2.01 to +3	10
+3.01 to +4	8
+4.01 to +5	10
+5.01 to +6	11
GREATER THAN +6	12

TYPE 3 CURB RAMP

CURB RAMP ALONG CURB	MIN. LENGTH OF RAMP (ft.)
POSITIVE (+) VALUES	3
NEGATIVE (-) VALUES	4
+2.01 to +3	5
+3.01 to +4	6
+4.01 to +5	8
+5.01 to +6	11
GREATER THAN +6	12

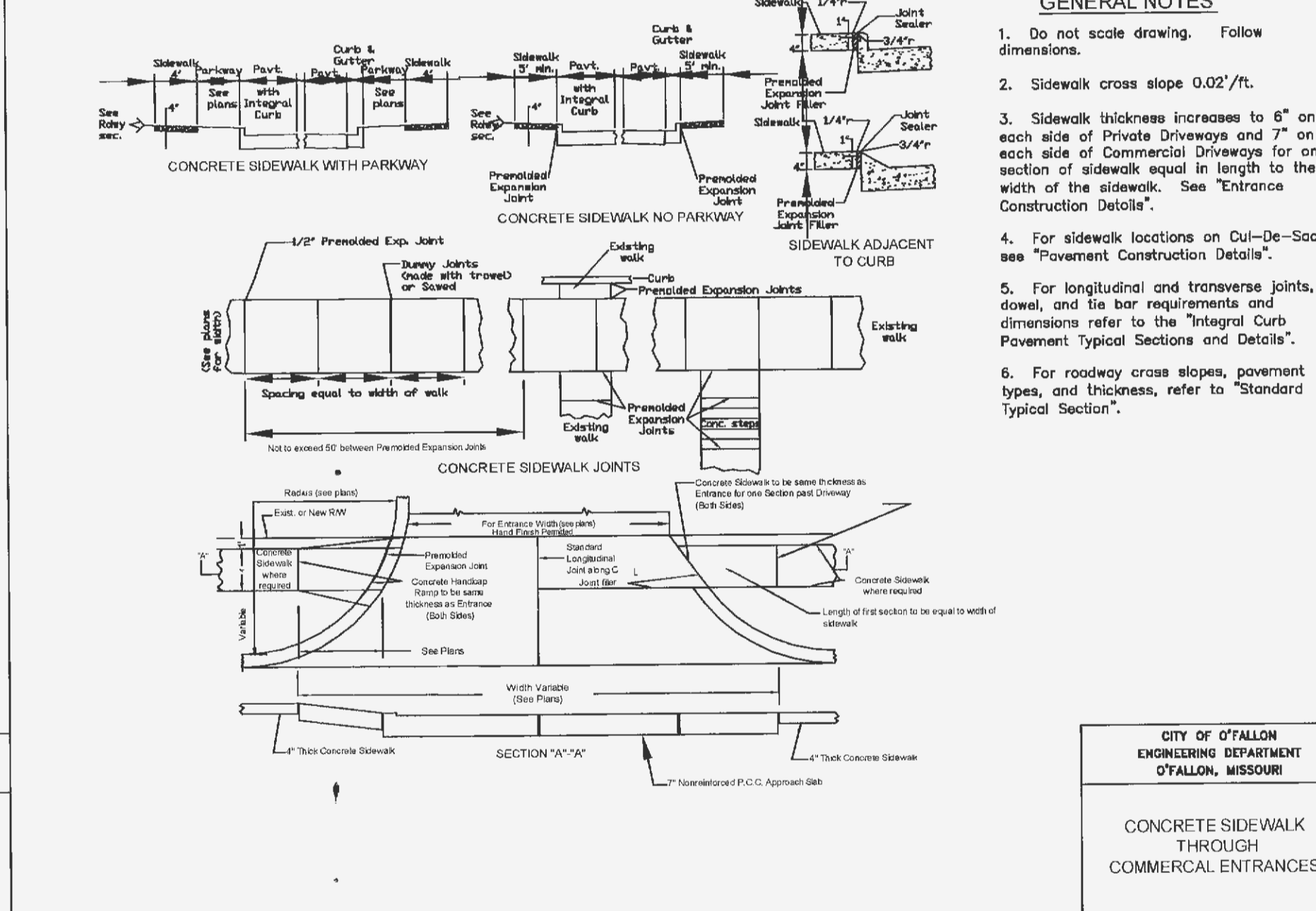


TYPICAL SIDEWALK INSTALLATION (WITH MIDDLE CURB RAMP - TYPE 7)



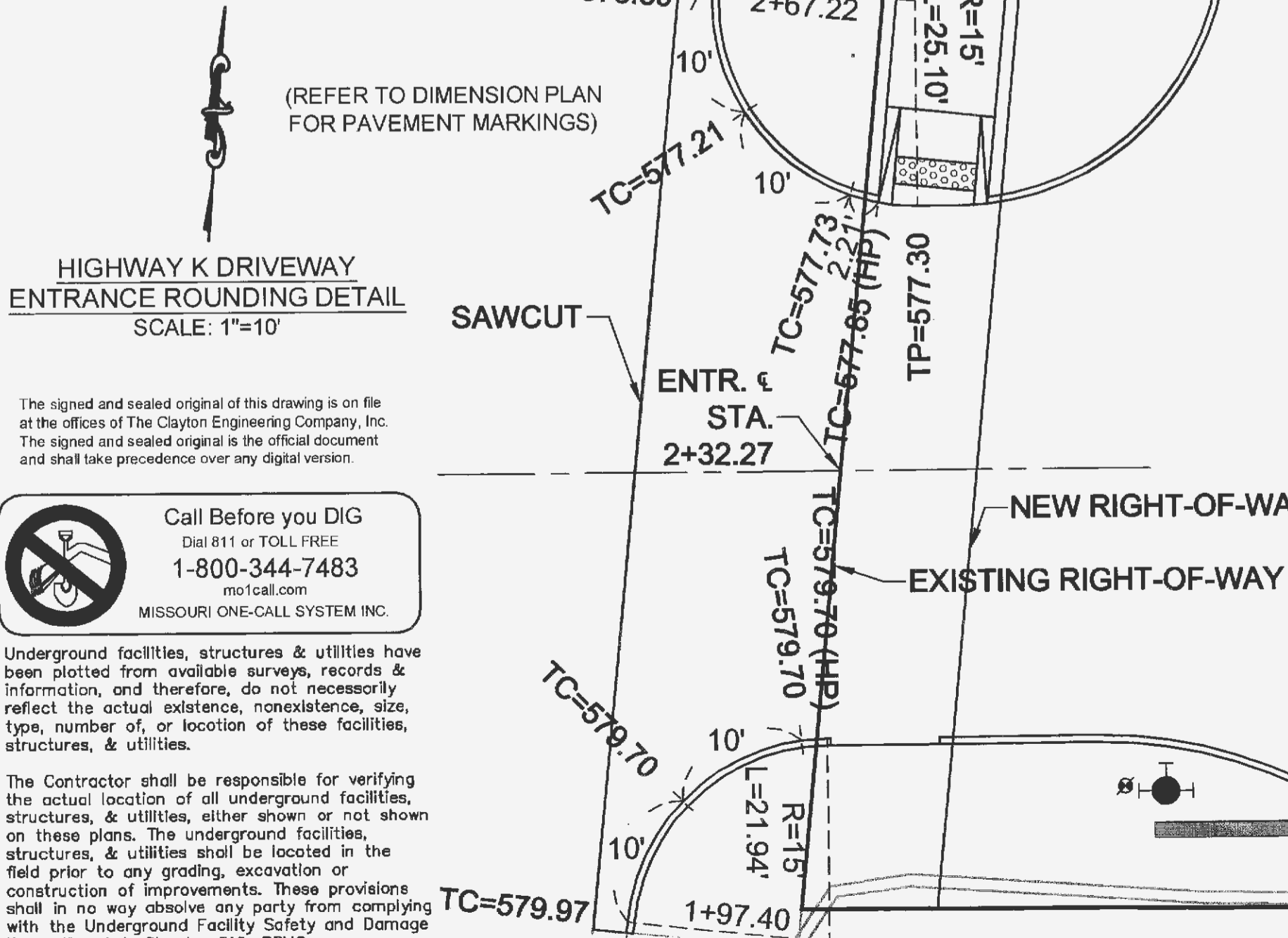
- GENERAL NOTES**
- Do not scale drawing. Follow dimensions.
 - Sidewalk and sidewalk curb ramps shall be constructed in accordance with these details and the current approved American with Disabilities Act Accessible Guidelines (ADAAG).
 - Minimum sidewalk width along 5' vertical curb shall be 5 feet. Minimum sidewalk width along 3' rolled curb shall be 4 feet.
 - Maximum sidewalk cross slope 0.02%/ft.
 - All sidewalk sections shall be 4" thick, except where indicated on 7' thick by shaded portions shown on details.
 - Where curb ramp meets pavement, Bullnose will not be permitted.
 - If integral concrete curb is constructed, strike a dummy joint across bottom of ramp at curb line. If concrete curb is dowelled on, back cut pavement to provide full depth curb across ramp from outer point of curb taper to outer point of curb taper.
 - For pavement longitudinal and transverse joints and dowel and tie bar requirements and dimensions, refer to the Pavement Construction Details for Joints and Curb.
 - For roadway cross slopes, pavement types, and thicknesses, refer to Standard Typical Sections.
 - The intersection of two sidewalks or the intersection of a sidewalk and a driveway may serve as a wheelchair passing space on sidewalks less than 5 feet wide.
 - All curb ramps shall have a detectable warning complying with Americans with Disabilities Act Accessibility Guidelines (ADAAG).
 - All ramps must line up with the corresponding ramp on the other side of the street or intersection.
 - All truncated domes shall run parallel to the road that it's crossing.
 - Truncated warning domes shall not be stamped and will be an ADA approved product.

PAVEMENT CONSTRUCTION DETAILS CONCRETE SIDEWALK AND CURB RAMPS



- GENERAL NOTES**
- Do not scale drawing. Follow dimensions.
 - Sidewalk cross slope 0.02%/ft.
 - Sidewalk thickness increases to 6" on each side of Private Driveways and 7" on each side of Commercial Driveways for one section of sidewalk equal in length to the width of the sidewalk. See 'Entrance Construction Details'.
 - For sidewalk locations on CUL-DE-SACS see 'Pavement Construction Details'.
 - For longitudinal and transverse joints, dowel, and tie bar requirements and dimensions refer to the 'Integral Curb Pavement Typical Sections and Details'.
 - For roadway cross slopes, pavement types, and thickness, refer to 'Standard Typical Section'.

CITY OF O'FALLON ENGINEERING DEPARTMENT O'FALLON, MISSOURI

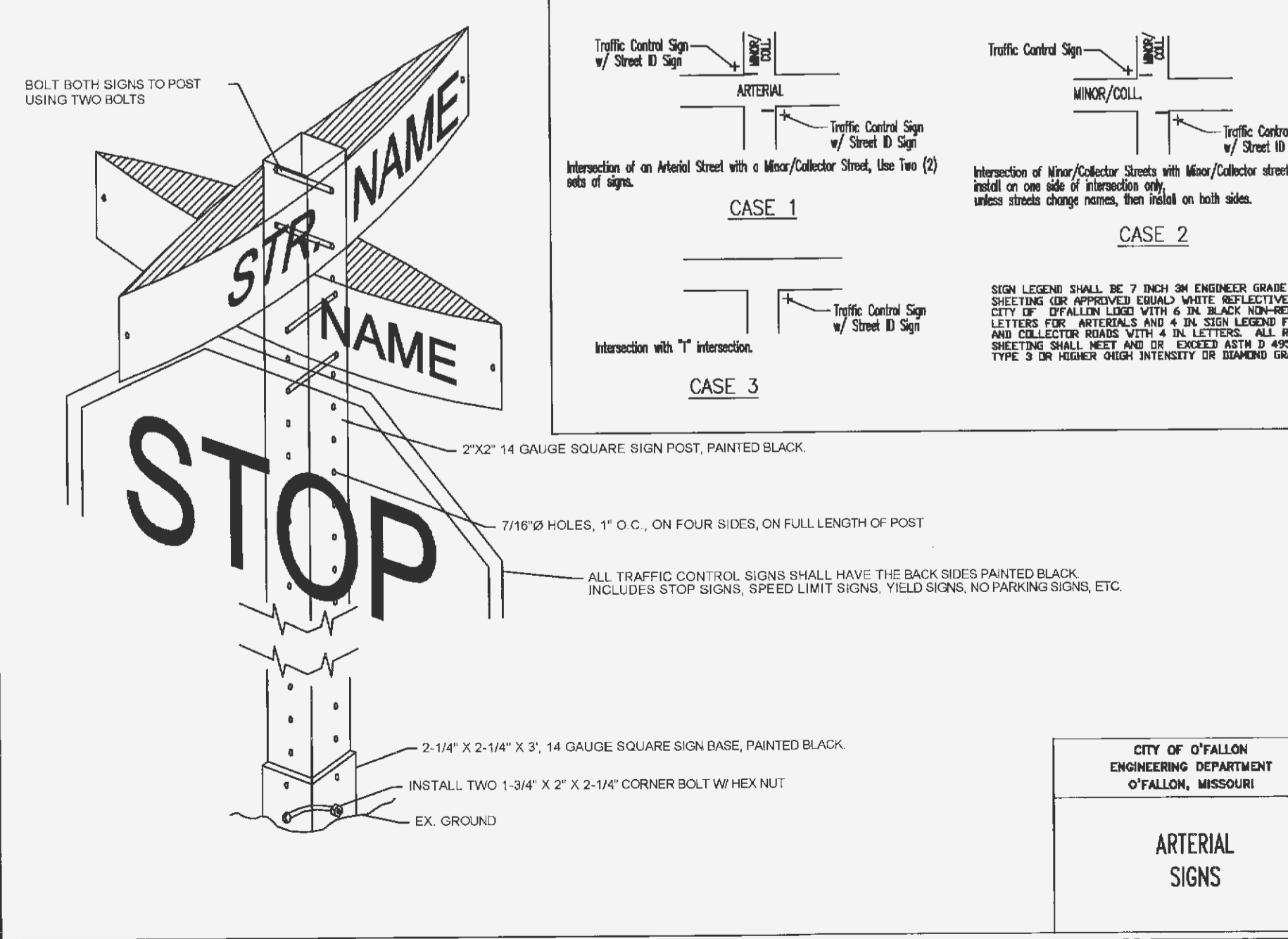


(REFER TO DIMENSION PLAN FOR PAVEMENT MARKINGS)
HIGHWAY K DRIVEWAY ENTRANCE ROUNDING DETAIL
 SCALE: 1"=10'

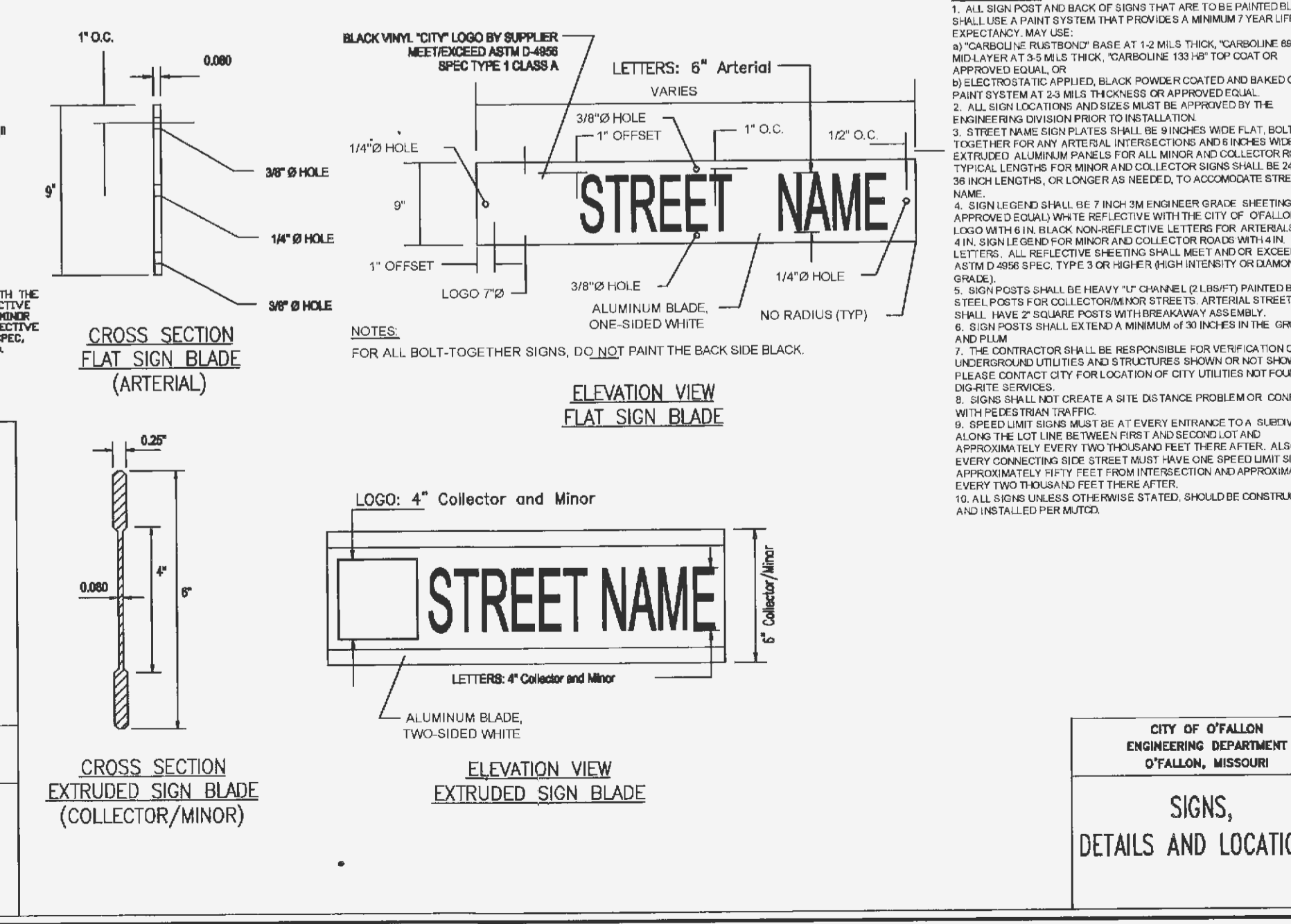
Call Before you DIG
 Dial 811 or TOLL FREE
1-800-344-7483
 MISSOURI ONE-CALL SYSTEM INC.

Underground facilities, structures & utilities have been plotted from available surveys, records & information, and therefore, do not necessarily reflect the actual existence, nonexistence, size, type, number, or location of these facilities, structures, & utilities.

The Contractor shall be responsible for verifying the actual location of all underground facilities, structures, & utilities, either shown or not shown on these plans. The underground facilities, structures, & utilities shall be located in the field prior to any grading, excavation or construction of improvements. These provisions shall in no way absolve any party from complying with the Underground Facility Safety and Damage Prevention Act, Chapter 319, RSMo.



CITY OF O'FALLON ENGINEERING DEPARTMENT O'FALLON, MISSOURI



CITY OF O'FALLON ENGINEERING DEPARTMENT O'FALLON, MISSOURI

PROJECT TITLE:
 SITE CONSTRUCTION PLANS
 DIRT CHEAP OF O'FALLON
 #708 MO. STATE HIGHWAY K
 O'FALLON, MISSOURI 63366

Copyright 2014
 All Rights Reserved

the clayton engineering company, inc.
 11620 Westline Industrial Drive
 St. Louis, MO 63146
 Tel: (314) 892-8988
 Fax: (314) 892-8668
 claytoneng.pro
 Job#: 10122

MO Cert. of Authority - Professional Engineering #000067
 & Professional Surveying #000014

Erik J. Staley - Professional Engineer
 (PE 200600132)

STATE OF MISSOURI
ERIK J. STALEY
 PROFESSIONAL ENGINEER
 NUMBER
 PE 200600132
 9-4-14

Plan Date: November 8, 2013
Revision Date: April 28, 2014
Revision Date: May 22, 2014
Revision Date: August 1, 2014
Revision Date: Sept. 4, 2014

Developer / Owner Information:
 U-GAS PROPERTIES OF FALLON LLC
 895 Bolger Court
 Fenton, Missouri 63026
 (636) 343-9770 FAX: (636) 343-9768

P+Z No: (23-13.02)
Approval Date: 10/03/13
 City No.

Page No.
16 of 23