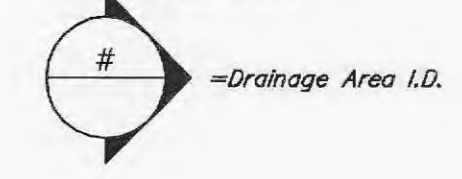


EXISTING DRAINAGE AREAS (O'FALLON)								
I.D.	Total Area (ac.)	Grass (ac.)	Pavement (ac.)	Roof (ac.)	15-yr Comp. PI	15-yr Flow, Q (cfs)	15-yr Flow, Q x 1.1" (cfs)	to Structure
1	0.23	0.01	0.17	0.05	3.42	0.79	0.87	Exist. CI on East side of Highway K
2	0.07	0.04	0.03	0	2.47	0.17	0.19	Exist. GI on South Side of McDonald Ln.
3	1.23	0.12	0.89	0.22	3.32	4.09	4.50	Exist. GI on South Side of McDonald Ln.

EXISTING OFFSITE DRAINAGE AREAS (O'FALLON)								
I.D.	Total Area (ac.)	Grass (ac.)	Pavement (ac.)	Roof (ac.)	15-yr Comp. PI	15-yr Flow, Q (cfs)	15-yr Flow, Q x 1.1" (cfs)	to Structure
OFF1	0.01	0	0.01	0	3.50	0.04	0.04	Exist. GI at NE corner of T&J Auto Body
OFF2	0.04	0	0.04	0	3.50	0.14	0.15	Exist. GI on South Side of McDonald Ln.
OFF3	0.23	0.02	0.21	0	3.34	0.77	0.85	Exist. GI on South Side of McDonald Ln.
OFF4	0.06	0.02	0.04	0	2.90	0.17	0.19	Exist. CI on East side of Highway K

CITY OF O'FALLON
 Design Storm: 15-yr., 20-min.
 (per CITY OF O'FALLON) for Storm Sewer Sizing:
 Roof PI=3.5; Pavement PI=3.5; Grass PI=1.7;
 Discharge Body: Dardenne Creek



MISSOURI STATE HIGHWAY M/
 (BK 248, PG 29, BE 384, PG 702, BK 799, PG 927 & BK 1389, PG 2360)
 (A.K.A. MISSOURI STATE HIGHWAY K)

N/F T&J AUTO BODY INC
 BK 1230, PG 1308
 JAN. 6, 1989
 (USED REFERENCE TO MARCH 1964 GENE DITCH SURVEY)

N/F ROY R. THOELE ET UX
 BK 422, PG 629
 JAN. 4, 1965

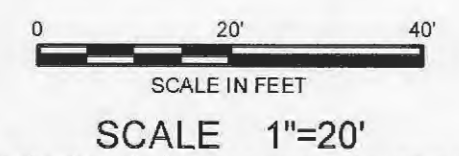
N/F STEPHANINA RODERICK
 BK 1126, PG 183
 DEC. 22, 1986

The signed and sealed original of this drawing is on file at the offices of The Clayton Engineering Company, Inc. The signed and sealed original is the official document and shall take precedence over any digital version.

Call Before you DIG
 Dial 811 or TOLL FREE
 1-800-344-7483
 Missouri One-Call System Inc.

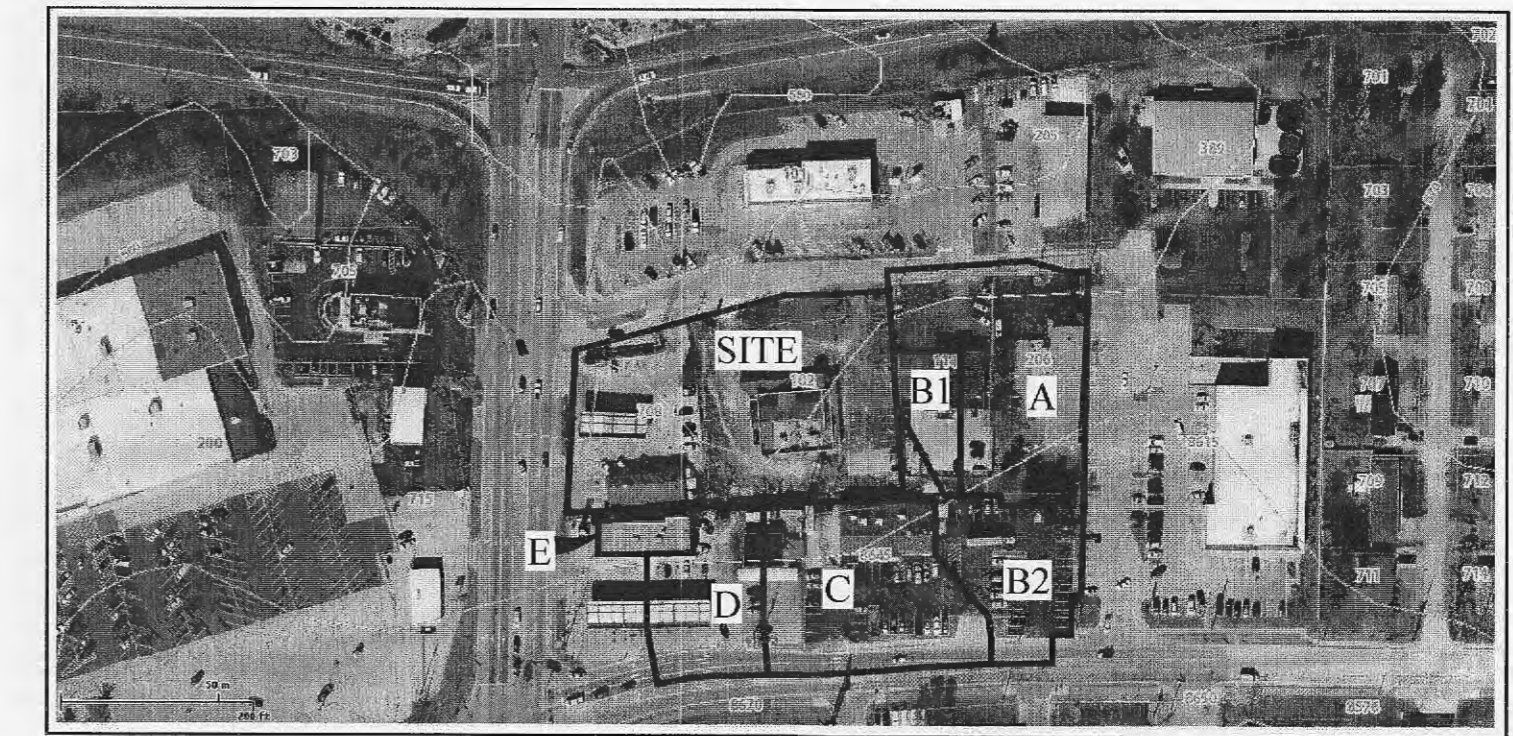
Underground facilities, structures & utilities have been plotted from available surveys, records & information, and therefore, do not necessarily reflect the actual existence, nonexistence, size, type, number of, or location of these facilities, structures, & utilities.

The Contractor shall be responsible for verifying the actual location of all underground facilities, structures, & utilities, either shown or not shown on these plans. The underground facilities, structures, & utilities shall be located in the field prior to any grading, excavation or construction of improvements. These provisions shall in no way absolve any party from complying with the Underground Facility Safety and Damage Prevention Act, Chapter 319, RSMo.



OFFSITE AERIAL - EXISTING DRAINAGE AREAS (O'FALLON)							
I.D.	Total Area (ac.)	Pervious (ac.)	Impervious (ac.)	15-yr Comp. PI	15-yr Flow, Q (cfs)	15-yr Flow, Q x 1.1" (cfs)	to Structure
A	0.88	0.21	0.67	3.07	2.70	2.97	Exist. GI 1-EX5 at NE corner of T&J Auto Body
B1	0.18	0.01	0.17	3.40	0.61	0.67	Exist. Surface Flow onto Site to Ex. GI 1-EX2
B2	0.49	0.05	0.44	3.32	1.63	1.79	Exist. Surface Flow onto Site to Ex. GI 1-EX2
C	0.83	0.03	0.80	3.43	2.85	3.14	Exist. CI 1-EX8
D	0.44	0.01	0.43	3.46	1.52	1.67	Exist. CI 1-EX7 (to be replaced by CI 1-7)
E	0.10	0.03	0.07	2.96	0.30	0.33	Exist. Surface Flow onto Site to Ex. GI 1-EX2

* INCLUDES A GROUND SATURATION FACTOR OF 1.1



(ST. CHARLES COUNTY MAP SERVICE: 2012 AERIAL)
 OFFSITE AERIAL & CONTOUR MAP
 Scale: 1"=200'

PROJECT TITLE:
 SITE CONSTRUCTION PLANS
 DIRT CHEAP OF O'FALLON
 #708 MO. STATE HIGHWAY K
 O'FALLON, MISSOURI 63366

Copyright 2014
 Clayton Engineering Co.
 All Rights Reserved
 the clayton engineering company, Inc.
 11920 Westline Industrial Drive
 St. Louis, MO 63146
 (314) 662-8686
 claytoneng.com
 Job#: 10122
 MO Cert. of Authority - Professional Engineering #000037
 & Professional Surveying #000014



Plan Date: November 8, 2013
 Revision Date: April 28, 2014
 Revision Date: May 22, 2014
 Revision Date: August 1, 2014
 Revision Date: Sept. 4, 2014

Developer / Owner Information:
 U-GAS PROPERTIES OF FALLON LLC
 895 Bolger Court
 Fenton, Missouri 63026
 (636) 343-9770 FAX: (636) 343-9768
 EXISTING DRAINAGE AREA MAP

P+Z No.: (23-1302)
 Approval Date: 10/03/13
 City No.

Page No.
 19 of 23