

PLANT-SCHEDULE

TREES	COMMON NAME / BOTANICAL NAME	CONT	QTY	MATURITY
HL	Honeylocust / Gleditsia triacanthos	2"	7	40-60"
CSP	Cleveland Select Pear / Pyrus calleryana 'Cleveland Select'	2"	1	30-35'
CBFC	Coralburst Fl. Crab / Malus sp. 'Coralburst'	2"	5	10-15'
SHRUBS	COMMON NAME / BOTANICAL NAME	CONT	QTY	
DBB	Dwf. Burning Bush / Euonymus alatus 'Compactus'	18-24"	5	48-60"
S-DAY	Stella de Oro Daylily / Hemerocallis x 'Stella de Oro'	1 gal	16	12-15"
CGH	China Girl Holly / Ilex meserveae 'China Girl'	18-24"	14	36-48"
SGJ	Sea Green Juniper / Juniperus chinensis 'Sea Green'	18-24"	10	48-60"
PJ	Procumbens Juniper / Juniperus sabina 'Procumbens Nana'	5 gal	9	12-18"
BAY	Northern Bayberry / Myrica pensylvanica	24-30"	3	6-8'
PSC	Purple Sand Cherry / Prunus cistena	2-3'	6	5-6'
GMS	Goldmound Spirea / Spiraea bumalda 'Goldmound'	5 gal	3	30-36"

LANDSCAPE REQUIREMENTS:

Exterior Tree Requirement:

One Street Tree (2") shall be required for every 40' street frontage. Not less than 6% of Parking Lot Islands shall require landscape, which shall consist of trees and shrubs.

Interior Planting Requirements:

Not less than 6% of the interior of a parking lot shall be landscaped. The interior of a parking lot is determined by multiplying the number of parking stalls by (270) two-hundred seventy. Planting along perimeter of parking lot shall not be considered interior planting.

Bufferyard/Transitional Planting:

No Bufferyard is required, as property is not adjacent to a residential property.

LANDSCAPE CALCULATIONS:

Exterior Planting:

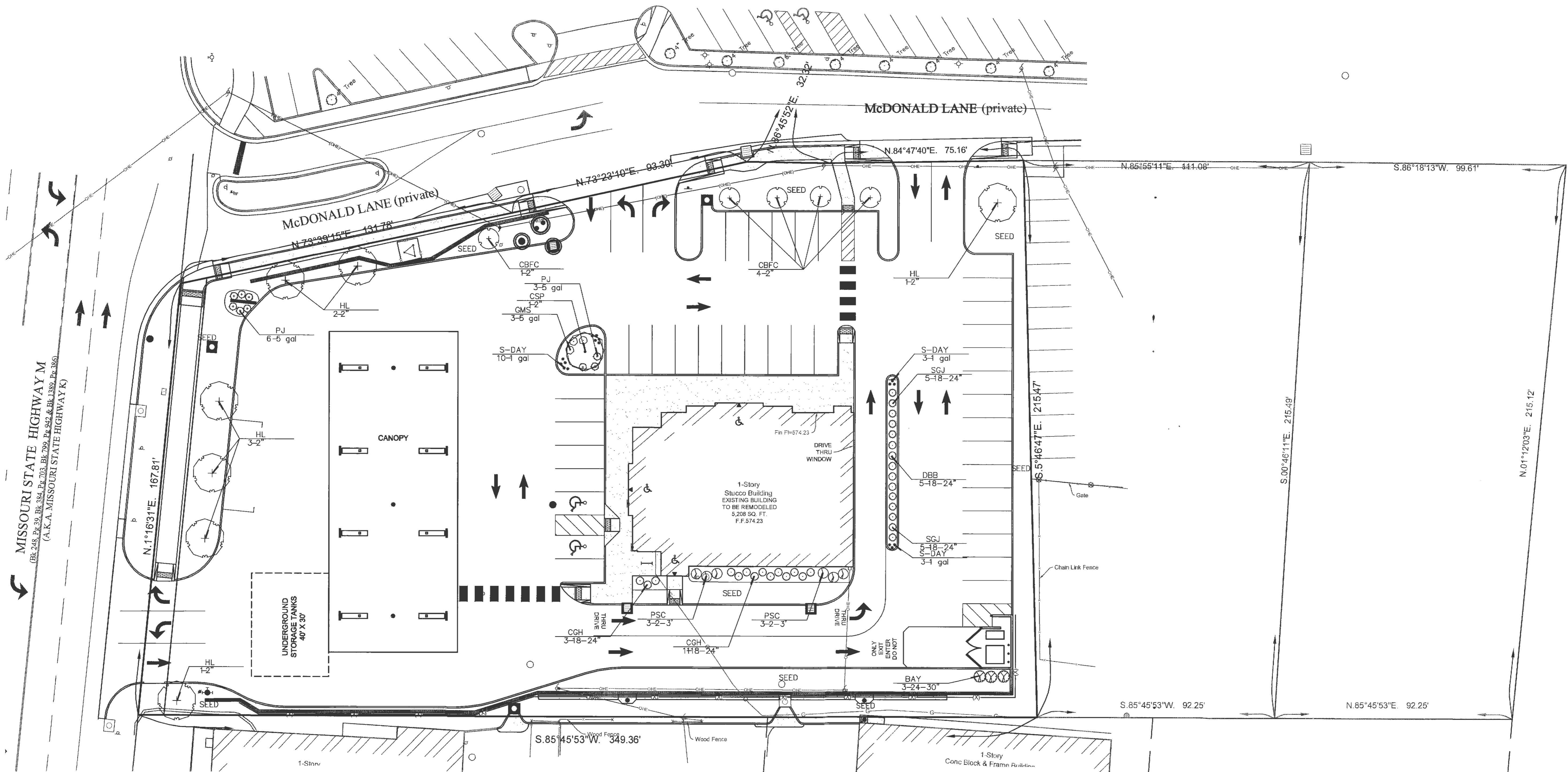
466 Lin. Ft. Street Frontage / 40' = 11.65 Tree Required

-12 Street Trees Provided

Interior Planting:

41 Parking Stalls * 270 = 11,070 * 6% = 665 Sq. Ft. Required

-1,678 Sq. Ft. Provided



Drawn by: CJA
 Scale: 1" = 20'
 Date: 8-29-13
 Revised: 5-12-14

BAXTER FARMS
 and NURSERIES
 3411 CREVE COEUR MILL ROAD
 ST. LOUIS, MISSOURI 63146
 314/542-9400

Landscape Planning Plan For:
Dirt Cheap-O'Fallon, MO
 Highway K
 Prepared For: U-GAS

Drawing Number:
L-1
 of one