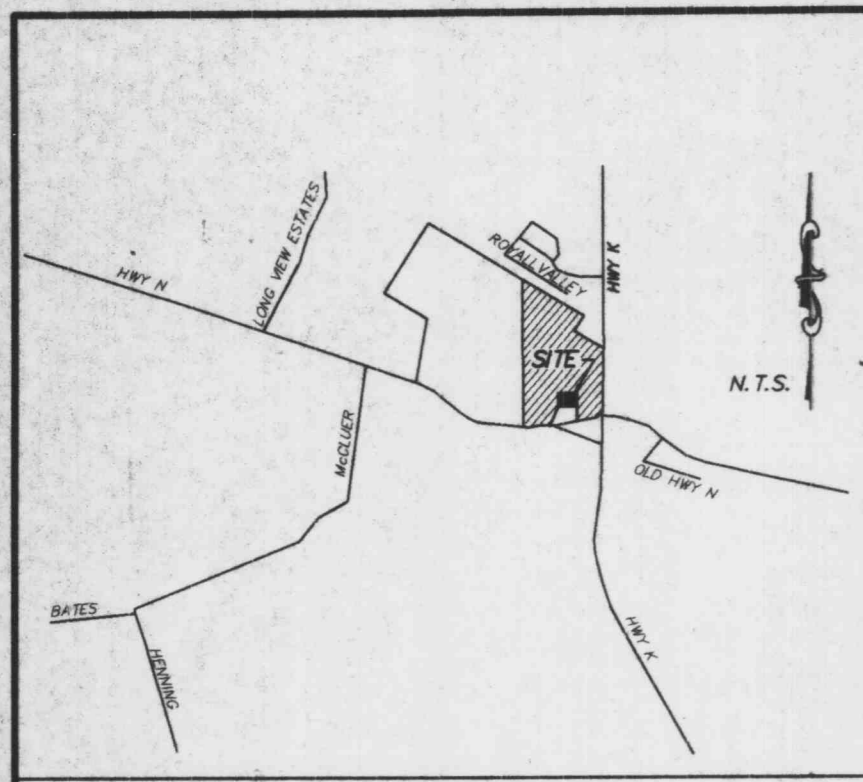
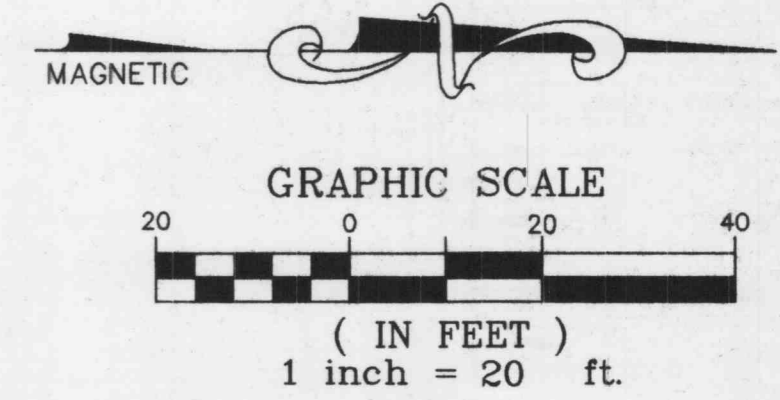


DOBBS

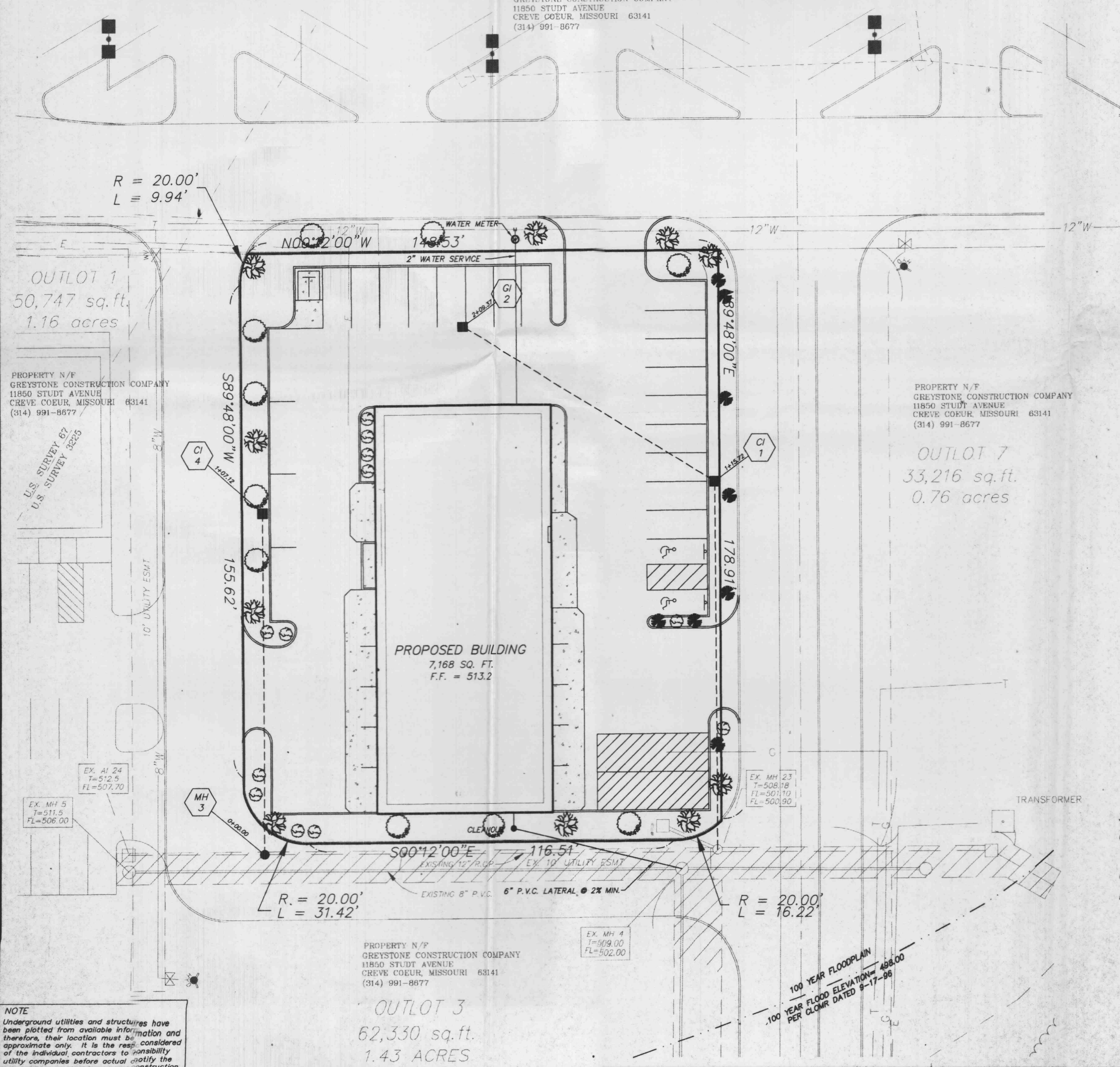
OUTLOT 2 OF DEER CREEK CROSSING

A TRACT OF LAND BEING PART OF
U.S. SURVEYS 67 AND 3225, AND
PART OF FRACTIONAL SECTION 8,
TOWNSHIP 46 NORTH, RANGE 3 EAST
ST. CHARLES COUNTY, MISSOURI



LOCATION MAP

PROPERTY N/F
GREYSTONE CONSTRUCTION COMPANY
11850 STUDD AVENUE
CREVE COEUR, MISSOURI 63141
(314) 991-8677



LANDSCAPE CALCULATIONS

STREET TREES REQUIRED: 19 TREES REQUIRED/20 TREES PROVIDED
STREET TREES REQUIRED: 658' (FRONTAGE)/40' = 17 TREES
LANDSCAPE AREAS REQUIRED: 4,300 S.F./3000 S.F. = 2 TREES
20 TREES PROVIDED

PLANTING SCHEDULE

SYMBOL	BOTANICAL NAME	COMMON NAME	QUANTITY	SIZE
○	FRAXINUS PENNSYLVANICA 'PATMORE'	PATMORE ASH	10	2"
⊗	MALUS 'SPRING SHOW'	SPRING SHOW CRABAPPLE	10	2"
⊕	EUONYMUS ALATUS 'COMPACTA'	DWARF BURNING BUSH	12	2 GAL.
●	TAXUS X MEDIA 'DENSIFORMIS'	DENSIFORMA YEW	8	2 GAL.

SITE BENCHMARK:

CHISELED "L" ON CONCRETE HEADWALL OF CONCRETE BOX CULVERT
WEST SIDE OF HWY. K, 500' NORTH OF CENTERLINE OF INTERSECTION
OF NEW HWY. N AND HWY. K.
ELEVATION = 498.96

OWNER/DEVELOPER:
GREYSTONE CONSTRUCTION COMPANY
11850 STUDD AVENUE
CREVE COEUR, MISSOURI 63141
(314) 991-8677

2-25-98 REVISED PER CITY OF FALLON
2-18-98 REVISED PER GREYSTONE CONSTRUCTION

© Copyright 1998 by Pickett, Ray & Silver Inc.

CONFIDENTIAL PROPRIETARY MATERIAL
The use, reproduction and sales rights of this drawing are reserved by Pickett, Ray & Silver Inc.

PICKETT RAY & SILVER

Civil Engineers
Planners
Land Surveyors

333 Mid Rivers Mall Dr.
St. Peters, MO 63376
397-1211 FAX 397-1104

DOBBS
OUTLOT 2 OF DEER CREEK CROSSING
LANDSCAPE PLAN

DRAWN	B.K.C.	DATE	2-3-98	3
CHECKED		DATE		
FIELD BOOK		PROJECT #	95-080F	5
		JOB ORDER #		

NOTE
Underground utilities and structures have been plotted from available information and therefore, their location must be considered approximate only. It is the responsibility of the individual contractors to verify the utility companies before actual construction.

OUTLOT 3
62,330 sq. ft.
1.43 ACRES