

REVISIONS	BY
2/24/2024	RVM
3/12/2024	RVM

**Landscaping TECHNOLOGIES**  
 87 Jacobs Creek Drive  
 St. Louis, MO 63114  
 (636) 428-1200  
 www.landscapingtechnologies.com

REGISTERED LANDSCAPE ARCHITECT  
 RANDALL A. MARDIS  
 LICENSE NUMBER 019  
 DATE: 5/12/2024

PLANTING PLAN FOR THE PROPOSED  
**Dobbs Tire & Auto Center**  
 OF FALLON, MISSOURI

DRAWN  
 R. MARDIS  
 CHECKED  
 RAN/VEL  
 DATE  
 11/1/2023  
 SCALE  
 1"=20'-0"  
 JOB No.  
 2023-175  
 SHEET  
**1-1**  
 OF TWO SHEETS

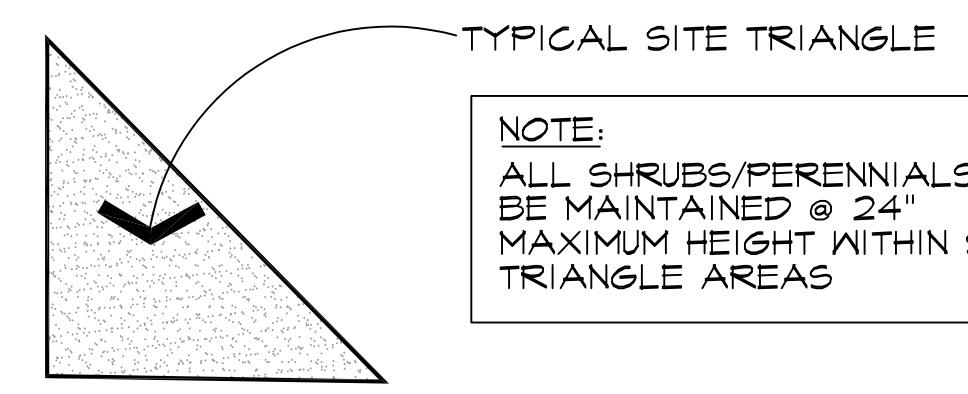
**LANDSCAPE REQUIREMENTS:**

**STREET TREES:**  
 ONE (1) 2.5" TREE PER FORTY (40) FEET OF FRONTAGE. TOTAL STREET FRONTAGE @ BRYAN ROAD = 312.84 LIN. FT.; THEREFORE, EIGHT (8) TREES ARE REQUIRED / EIGHT (8) TREES ARE PROVIDED.

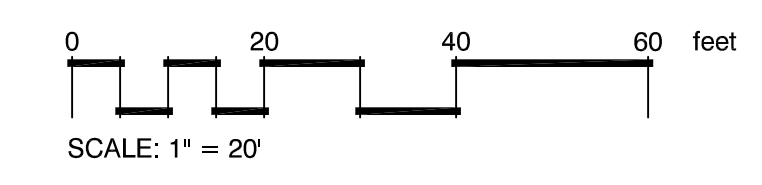
**SCREENING:**  
 TRANSFORMERS, TRASH DUMPSTERS, HVAC EQUIPMENT, ETC. SHALL BE SCREENED W/ EVERGREEN PLANT MATERIAL. NO BUFFERYARDS ARE REQUIRED AS ADJACENT PARCELS ARE ZONED C-3 COMMERCIAL AS WELL AS THIS PARCEL.

**OPEN SPACE/LANDSCAPE COVERAGE:**  
 ONE (1) 2.5" TREE PER 3,000 SQ. FT. OF LANDSCAPED OPEN SPACE. OPEN SPACE = 11,603 SQ. FT.; THEREFORE, EIGHT (8) TREES ARE REQUIRED / TEN (10) TREES ARE PROVIDED.

N/E  
 ALPHA LAND DEVELOPMENT TWO LLC  
 DOC # 2021R-021684



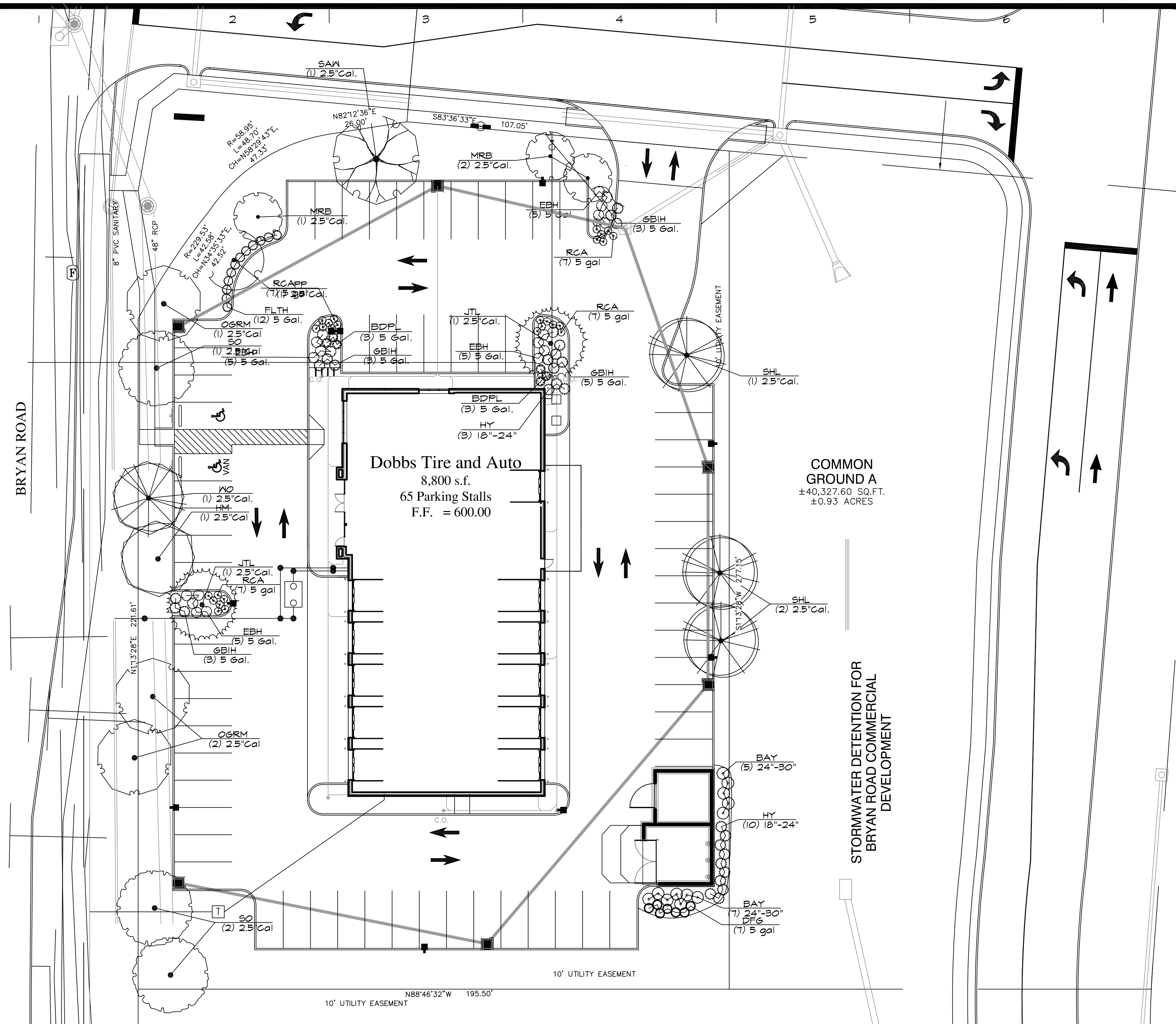
NOTE:  
 ALL SHRUBS/PERENNIALS TO BE MAINTAINED @ 24" MAXIMUM HEIGHT WITHIN SIGHT TRIANGLE AREAS



- PLEASE NOTE:
- ALL LANDSCAPE AREAS & ISLANDS SHALL BE PROVIDED WITH A MECHANICAL IN-GROUND IRRIGATION SYSTEM (BY OTHERS). COORDINATE LANDSCAPING WITH IRRIGATION CONTRACTOR.
  - ALL PLANTING BEDS TO BE EDGED W/ SPADE-CUT EDGE UNLESS OTHERWISE NOTED.
  - ADJUST TREE LOCATIONS FOR LIGHT STANDARDS AND UNDERGROUND UTILITIES.
  - NO TREES OR OTHER OBSTRUCTIONS SHALL BE LOCATED WITHIN 6 FEET OF FIRE HYDRANTS.
  - ALL SHRUBS/PERENNIALS WITHIN SIGHT TRIANGLE ZONES TO BE MAINTAINED AT A MAXIMUM HEIGHT OF TWENTY FOUR INCHES (2 FEET); ALL TREES TO BE MAINTAINED WITH A CLEAR HEIGHT FROM GRADE OF TEN (10) FEET.



1-800-DIG-RITE



PLANT SCHEDULE			
CODE	QTY	COMMON / BOTANICAL NAME	SIZE
<b>TREES</b>			
HM	1	HEDGE MAPLE / ACER CAMPESTRE	2.5" CAL.
PP	1	PERSIAN PARROTIA / FARROTTIA PERSICA	2.5" CAL.
SAW	1	SAANTOOTH OAK / QUERCUS ACUTISSIMA	2.5" CAL.
SO	3	SHINGLE OAK / QUERCUS IMERICARIA	2.5" CAL.
MO	1	WILLOW OAK / QUERCUS PHELLOS	2.5" CAL.
OGRM	3	OCTOBER GLORY MAPLE / ACER RUBRUM 'OCTOBER GLORY'	2.5" CAL.
SHL	3	'SKYLINE' LOCUST / GLEDITSIA TRIACANTHOS 'SKYLINE'	2.5" CAL.
<b>FLOWERING TREES</b>			
JTL	2	IVORY SILK JAPANESE TREE LILAC / SYRINGA RETICULATA 'IVORY SILK'	2.5" CAL.
MRB	3	MERLOT REDBUD / CERCIS X 'MERLOT'	2.5" CAL.
<b>SHRUBS</b>			
BDPL	6	BLOOMERANG DWARF PURPLE LILAC / SYRINGA X 'SMNJRPJ' TM	5 GAL.
EBH	20	ECLIPSE® BIGLEAF HYDRANGEA / HYDRANGEA MACROPHYLLA 'BAILMACSEVEN'	5 GAL.
FLTH	12	FIRE LIGHT TIDBIT HYDRANGEA / HYDRANGEA PANICULATA 'SMNHPK' TM	5 GAL.
GBIH	14	GEM BOX INKERRY HOLLY / ILEX GLABRA 'GEM BOX'	5 GAL.
HY	13	HICKS YEW / TAXUS MEDIA 'HICKSII'	18"-24"
BAY	12	NORTHERN BAYBERRY / MYRICA PENNSYLVANICA	24"-30"
RCA	28	ROSE CREEK ABELIA / ABELIA X GRANDIFLORA 'ROSE CREEK'	5 GAL.
<b>GRASSES</b>			
DFG	7	DWARF FOUNTAIN GRASS / PENNISETUM ALOPECUROIDES 'HAMELN'	5 GAL.

STORMWATER DETENTION FOR  
 BRYAN ROAD COMMERCIAL  
 DEVELOPMENT