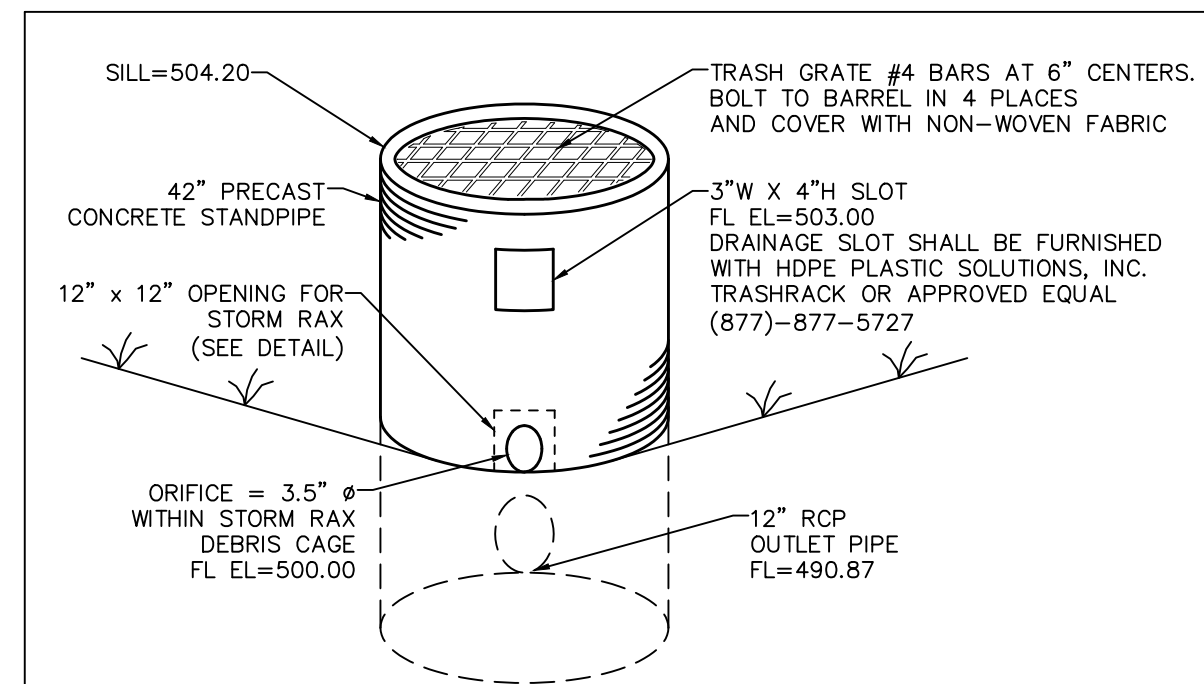
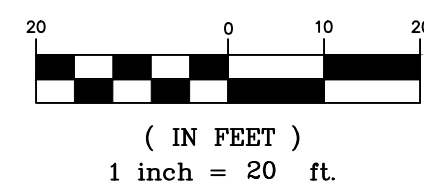


**Detention Basin Detail**

SCALE: 1"=20'  
NOTE: SOD BOTTOM OF BASIN UP TO 505 ELEVATION



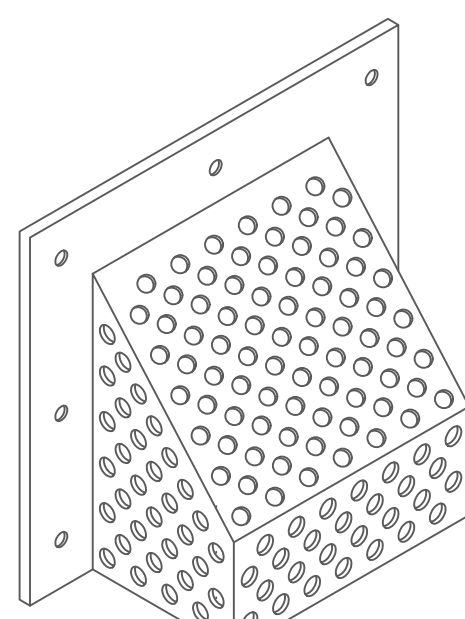
**GRAPHIC SCALE**



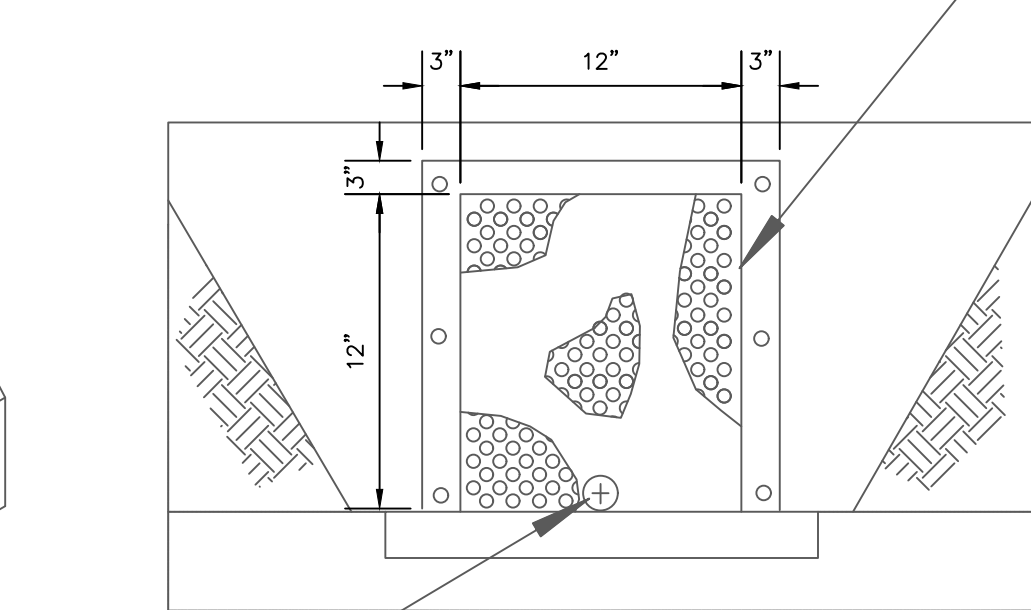
**BASIN OVERFLOW STRUCTURE 102 DETAIL**  
NOT TO SCALE

2 YEAR 20 MINUTE HIGHWATER = 502.45  
15 YEAR 20 MINUTE HIGHWATER = 503.28  
25 YEAR 20 MINUTE HIGHWATER = 503.67  
100 YEAR 20 MINUTE HIGHWATER = 504.04  
100 YEAR 20 MINUTE HIGHWATER LFB = 504.46

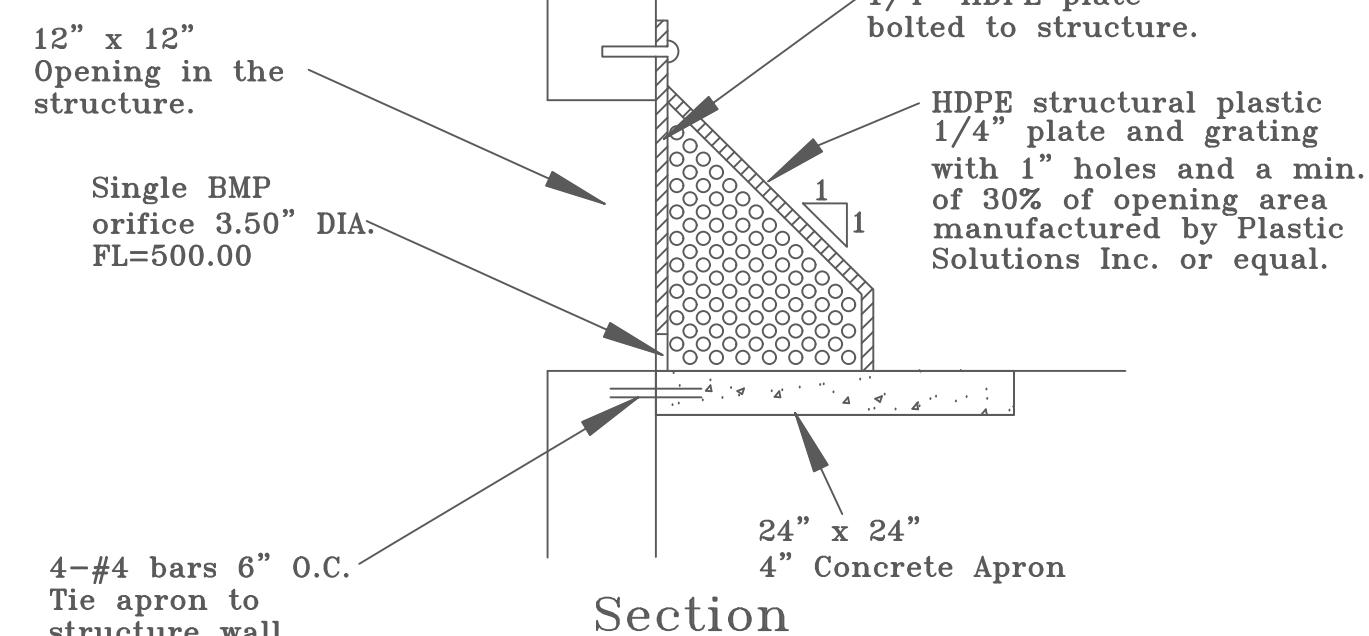
HDPE structural plastic 1/4" plate and grating with 1" holes and a min. of 30% of opening area manufactured by Plastic Solutions Inc., distributed by Contech Engineered Solutions or equal.



Isometric

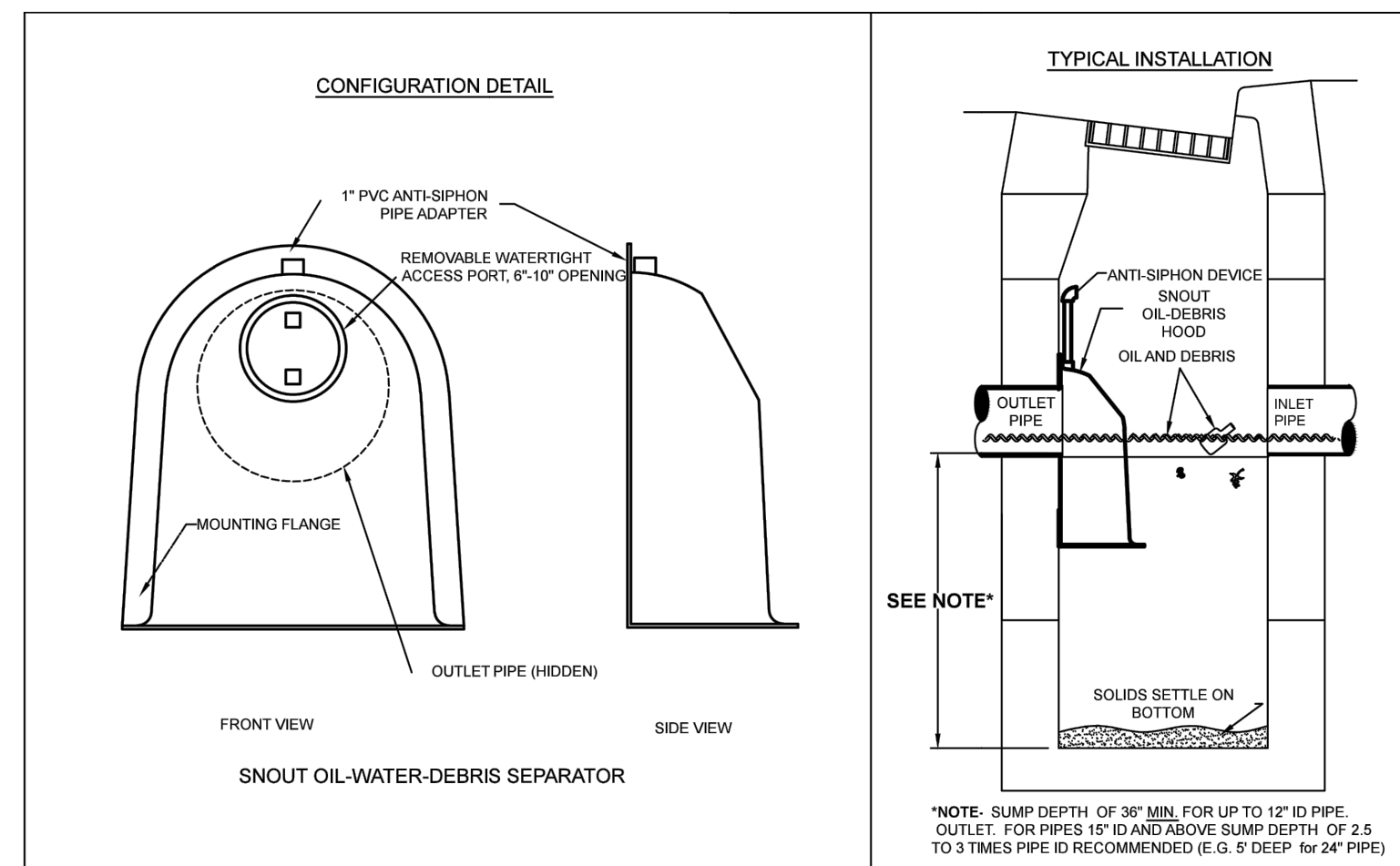


Elevation



Section

**STORM RAX BMP DEBRIS CAGE OS 102 DRY DETENTION BASIN**  
N.T.S.

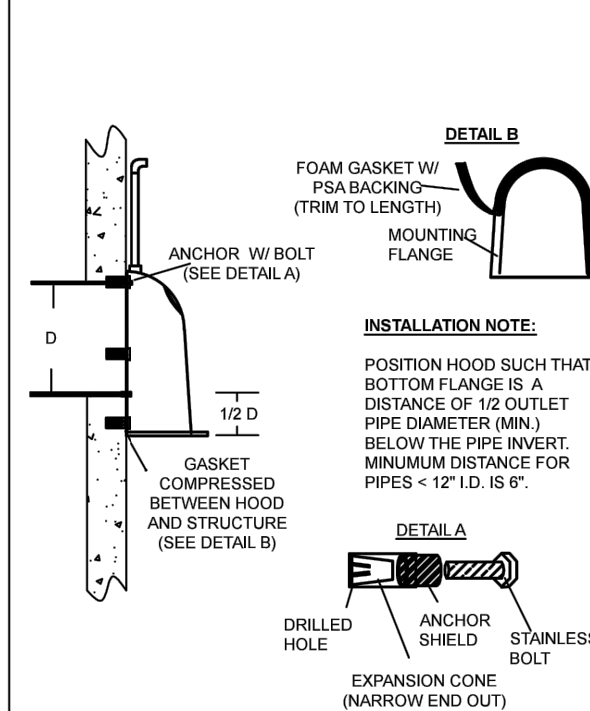


**NOTES:**

- ALL HOODS AND TRAPS FOR CATCH BASINS AND WATER QUALITY STRUCTURES SHALL BE AS MANUFACTURED BY BEST MANAGEMENT PRODUCTS, INC. 9 MATHEWS DRIVE, UNIT A1-A2, EAST HADDAM CT 06423. TOLL FREE: (800) 504-8008 OR (888) 434-0277, FAX: (877) 434-3197. WEB SITE: www.bmpinc.com OR PRE-APPROVED EQUAL.
- ALL HOODS SHALL BE CONSTRUCTED OF A GLASS REINFORCED RESIN COMPOSITE WITH ISO GEL COAT EXTERIOR FINISH WITH A MINIMUM 0.125" LAMINATE THICKNESS.
- ALL HOODS SHALL BE EQUIPPED WITH A WATERTIGHT ACCESS PORT A MOUNTING FLANGE, AND AN ANTI-SIPHON VENT PIPE AND ELBOW AS DRAWN. (SEE CONFIGURATION DETAIL).
- THE SIZE AND POSITION OF THE HOOD SHALL BE DETERMINED BY OUTLET PIPE SIZE AS PER MANUFACTURER'S RECOMMENDATION (SNOUT SIZE ALWAYS LARGER THAN PIPE SIZE).
- THE BOTTOM OF THE HOOD SHALL EXTEND DOWNWARD A MINIMUM DISTANCE EQUAL TO 1/2 THE OUTLET PIPE DIAMETER WITH A MINIMUM DISTANCE OF 6" FOR PIPES <12" I.D.
- THE ANTI-SIPHON VENT SHALL EXTEND ABOVE HOOD BY MINIMUM OF 3" AND A MAXIMUM OF 12" ACCORDING TO STRUCTURE CONFIGURATION.
- THE SURFACE OF THE STRUCTURE WHERE THE HOOD IS MOUNTED SHALL BE FINISHED SMOOTH AND FREE OF LOOSE MATERIAL AND PIPE SHALL BE FINISHED FLUSH TO WALL.
- ALL STRUCTURE JOINTS SHALL BE WATERTIGHT.
- THE HOOD SHALL BE SECURELY ATTACHED TO STRUCTURE WALL WITH 3/8" STAINLESS STEEL BOLTS AND OIL-RESISTANT GASKET AS SUPPLIED BY MANUFACTURER. (SEE INSTALLATION DETAIL).
- INSTALLATION INSTRUCTIONS SHALL BE FURNISHED WITH MANUFACTURER SUPPLIED INSTALLATION KIT. INSTALLATION KIT SHALL INCLUDE:  
A. INSTALLATION INSTRUCTIONS  
B. PVC ANTI-SIPHON VENT PIPE AND ADAPTER  
C. OIL-RESISTANT CRUSHED CELL FOAM GASKET WITH PSA BACKING  
D. 3/8" STAINLESS STEEL BOLTS  
E. ANCHOR SHIELDS

US Patent # 6126817, 7951294, 7857966, 8512556  
Canada Patent # 2285146, 2690156, 2690156 others pending

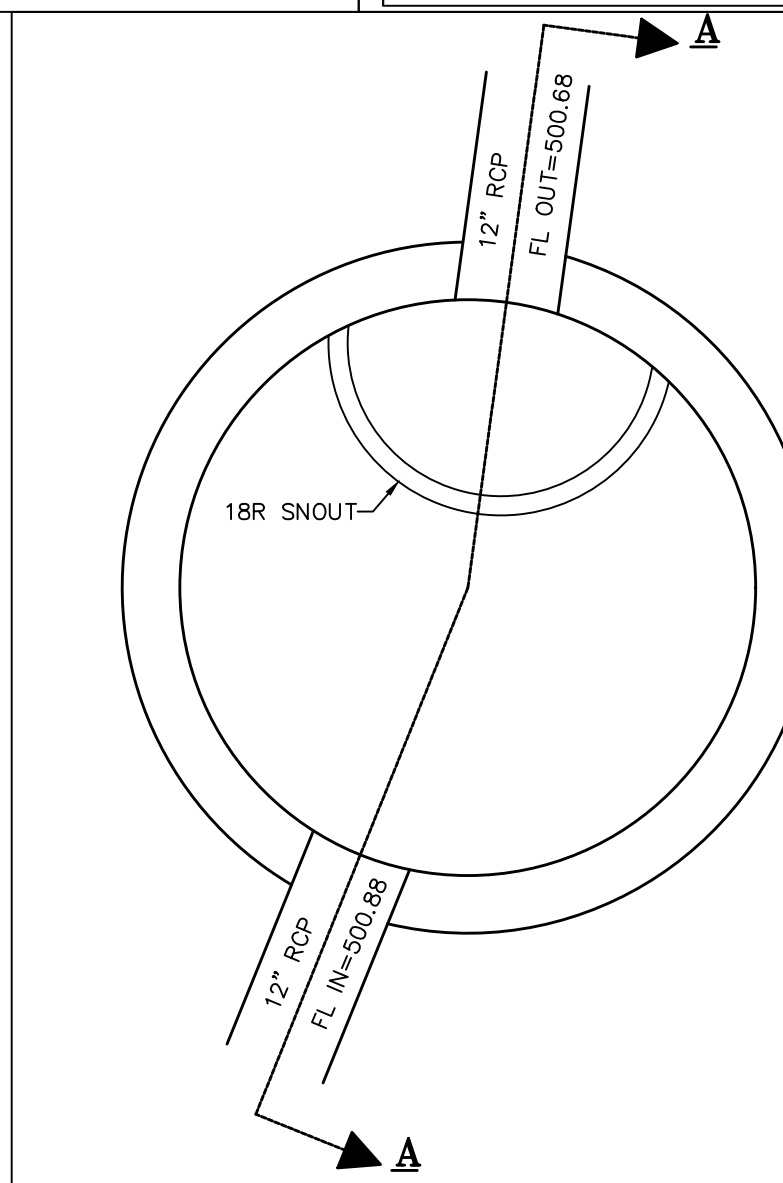
**INSTALLATION DETAIL**



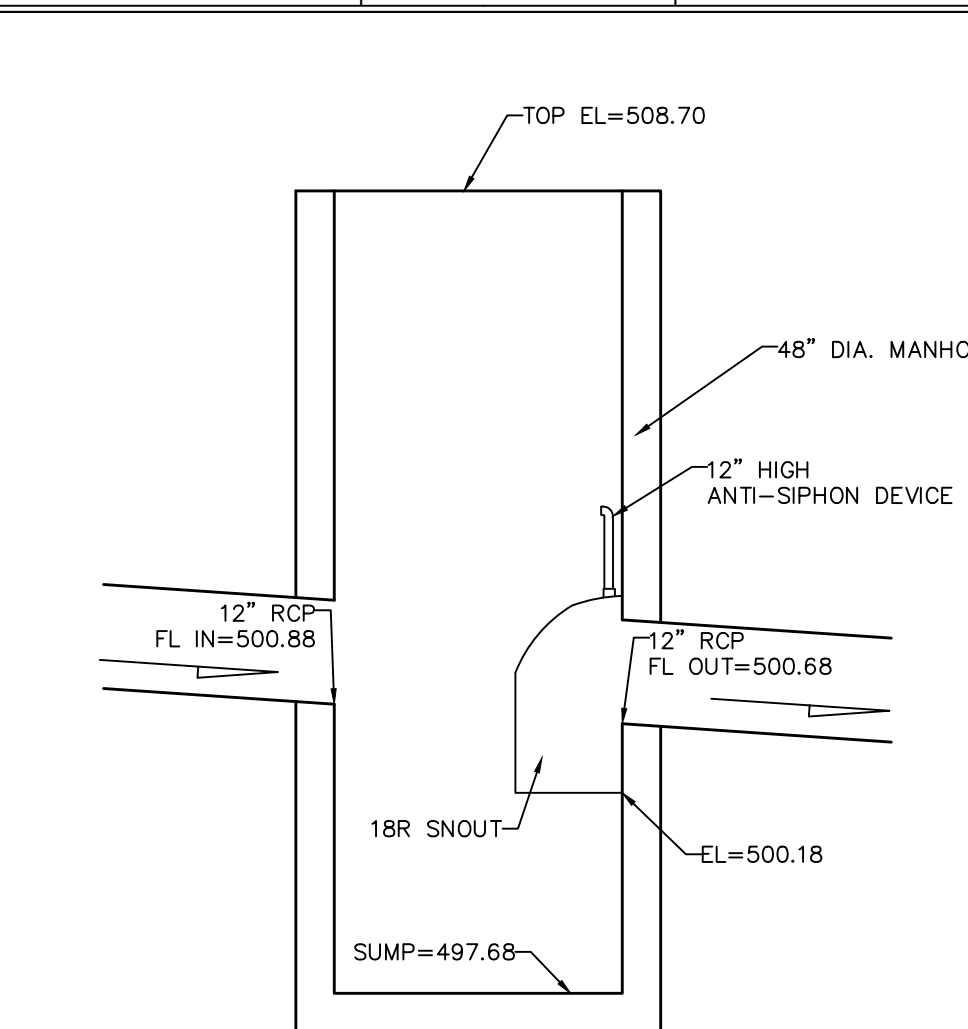
**HOOD SPECIFICATION FOR CATCH BASINS AND WATER QUALITY STRUCTURES**

DESCRIPTION	DATE	SCALE
OIL-DEBRIS HOOD SPECIFICATION AND INSTALLATION (TYPICAL)	09/08/18	NONE
DRAWING NUMBER	SP-SN	

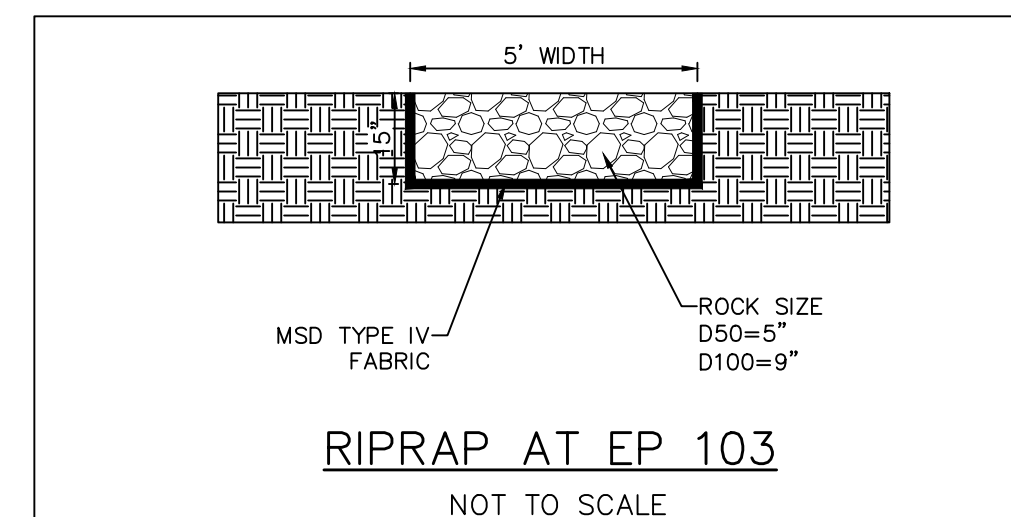
- Snout Maintenance Recommendations:
- Monthly monitoring for the first year of a new installation after the site has been stabilized is a recommended practice.
  - Measurements should be taken after each rain event of 0.50 inches or more, or monthly, as determined by local weather conditions.
  - Checking sediment depth and noting the surface pollutants in the structure will be helpful in planning maintenance.
  - The pollutants collected in SNOUT equipped structures will consist of floatable debris and oils on the surface of the captured water, and grit and sediment on the bottom of the structure.
  - It is best to schedule maintenance based on the solids collected in the sump.
  - Optimally, the structure should be cleaned when the sump is half full (e.g. when 2 feet of material collects in a 4 foot sump, clean it out).
  - Structures should also be cleaned if a spill or other incident causes a larger than normal accumulation of pollutants in a structure.
  - Maintenance is best done with a vacuum truck.
  - If Bio-Skirts are being used in the structure to enhance hydrocarbon capture, they should be checked on a monthly basis for the first year, and serviced or replaced when more than 2/3 of the boom is submerged, indicating a nearly saturated state. Assuming a typical pollutant-loading environment exists, Bio-Skirts should be serviced annually or replaced as necessary.
  - In the case of an oil spill, the structure should be checked and serviced and Bio-Skirts (if present) replaced or serviced immediately.
  - All collected wastes must be handled and disposed of according to local environmental requirements.
  - To maintain the SNOUT hoods, an annual inspection of the anti-siphon vent and access hatch are recommended. A simple flushing of the vent, or a gentle rodding with a flexible wire are all that's typically needed to maintain the anti-siphon properties. Opening and closing the access hatch once a year ensures a lifetime of trouble-free service.



**SNOUT DETAIL CI 104 PLAN VIEW**  
NOT TO SCALE

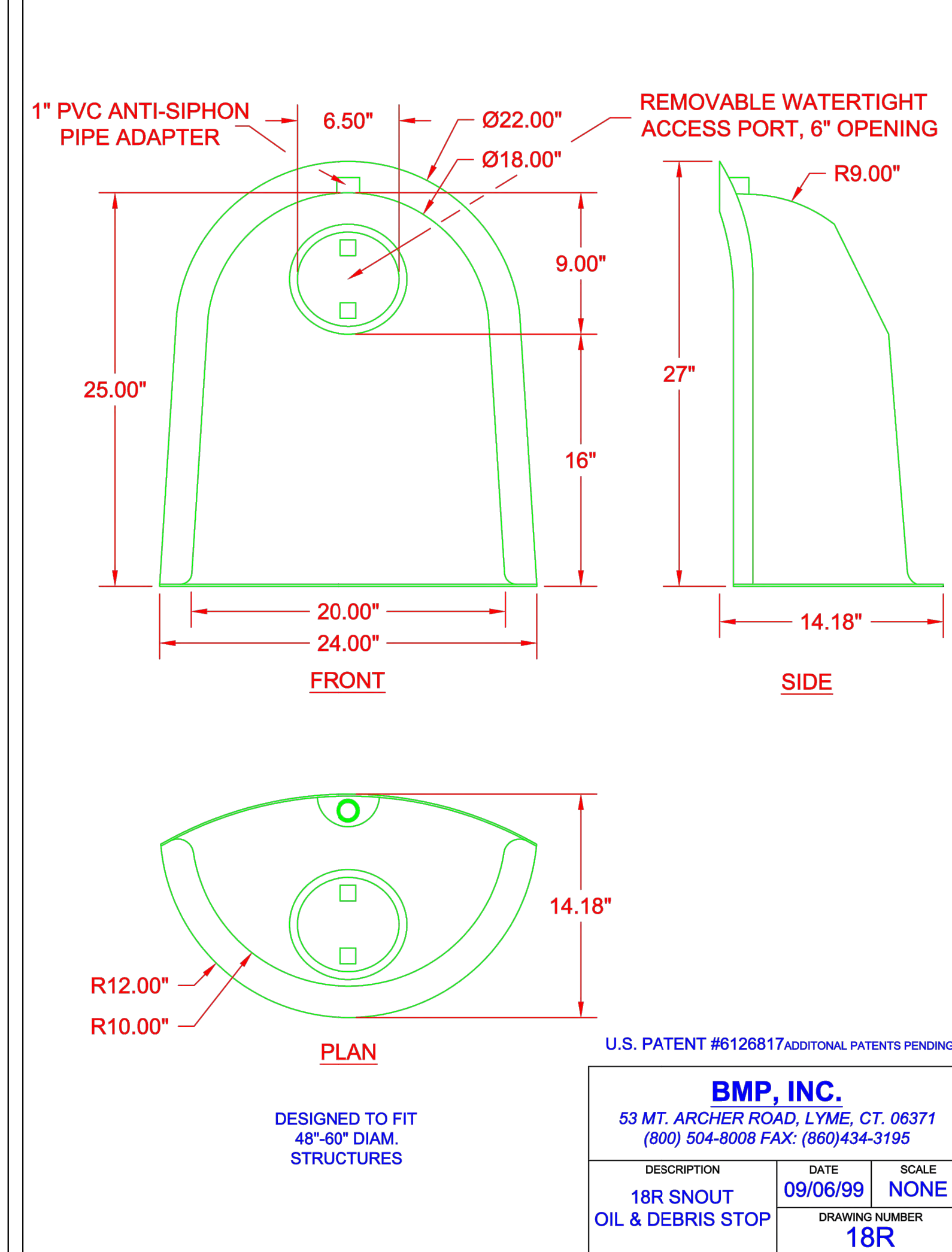


**SNOUT DETAIL CI 104 PROFILE VIEW: A-A**  
NOT TO SCALE



**RIPRAP AT EP 103**

- \*ALL ROCK BLANKETS REQUIRE MSD TYPE IV FABRIC (OR EQUAL)
- \*ROCK BLANKET SHALL HAVE A 12' LENGTH



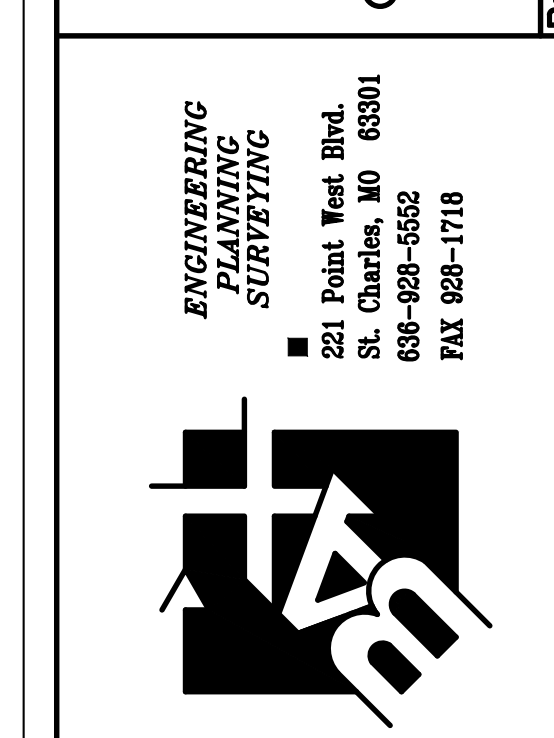
U.S. PATENT #6126817 ADDITIONAL PATENTS PENDING

**BMP, INC.**

53 MT. ARCHER ROAD, LYME, CT. 06371  
(800) 504-8008 FAX: (860) 434-3195

DESCRIPTION	DATE	SCALE
18R SNOUT OIL & DEBRIS STOP	09/06/99	NONE
DRAWING NUMBER	18R	

**PROJECT TITLE:**  
CONSTRUCTION PLANS FOR  
Dollar General  
395 TR Hughes Boulevard  
O'Fallon, MO 63366



STATE OF MISSOURI  
Professional Engineer  
07/11/23

Copyright © 2022  
BMP Engineering Company, Inc.  
Authority No. 000655  
All Rights Reserved

**REVISIONS**

NO.	DATE	DESCRIPTION
12-21-22		CITY COMMENTS
01-04-23		CITY COMMENTS
01-06-23		CITY COMMENTS
05-03-23		DG REVISIONS
05-17-23		CITY COMMENTS
07-11-23		4' HIGH FENCE

**Developer / Owner:**  
DG Partners L.L.C.  
5330 Salt River Road  
St. Peters, MO 63376  
(636) 970-0330

**P+Z No.** 22-009150  
Approved: 10-06-22  
**City No.** #  
**Page No.**

**11 of 16**



CALL BEFORE YOU DIG!  
1-800-DIG-RITE

UNDERGROUND UTILITIES HAVE BEEN PLOTTED FROM AVAILABLE INFORMATION AND THEREFORE THEIR LOCATIONS SHALL BE CONSIDERED APPROXIMATE ONLY. THE VERIFICATION OF THE LOCATION OF ALL UNDERGROUND UTILITIES, EITHER SHOWN OR NOT SHOWN ON THESE PLANS SHALL BE THE RESPONSIBILITY OF THE CONTRACTOR, AND SHALL BE LOCATED PRIOR TO ANY GRADING OR CONSTRUCTION OF THE IMPROVEMENTS.

**DETENTION BASIN DETAILS**

Issue Date: 11/29/2022