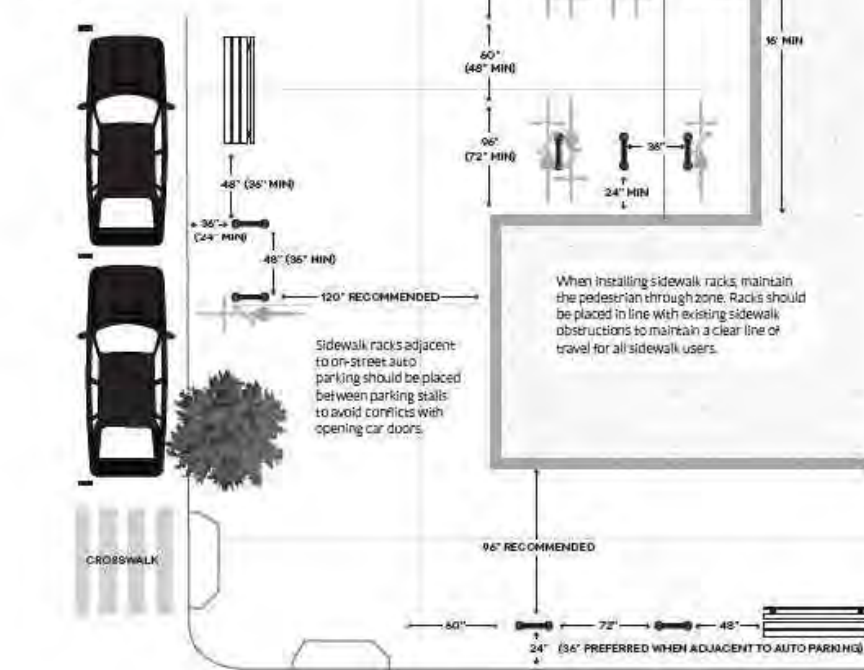


**PLACEMENT**

The following maximum spacing requirements apply to some common situations of bicycles that are parked on each side of the rack. Recommended clearance are given first, with maximums in parentheses where appropriate. In areas with tight clearances, consider whether known racks (e.g., which can be attached closer to walls and contain the bicycles) might be more suitable than the standard rack. The height of a typical bicycle is approximately 6'2". Cargo bikes and bikes with trailers can extend to 32" in height.



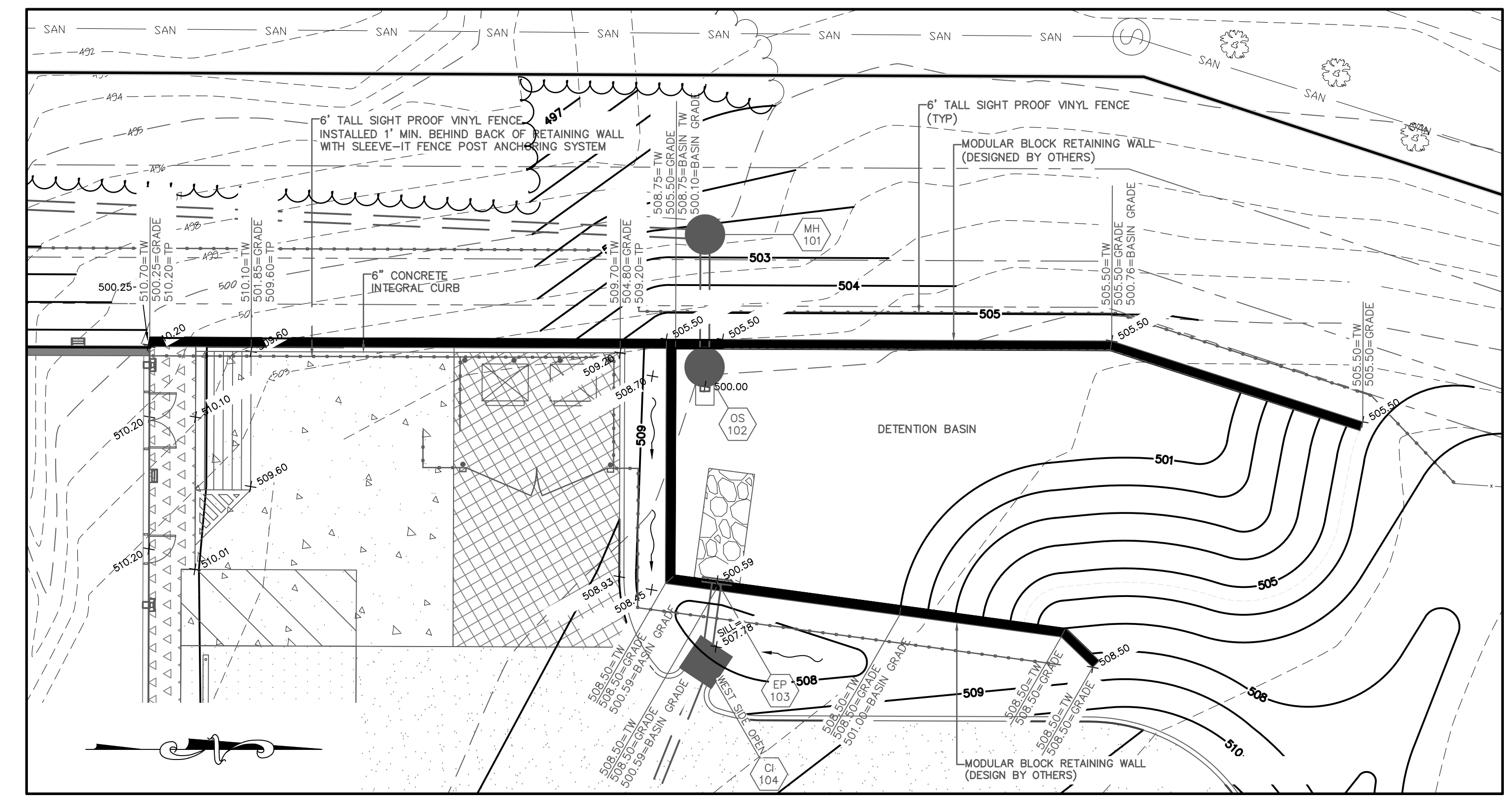
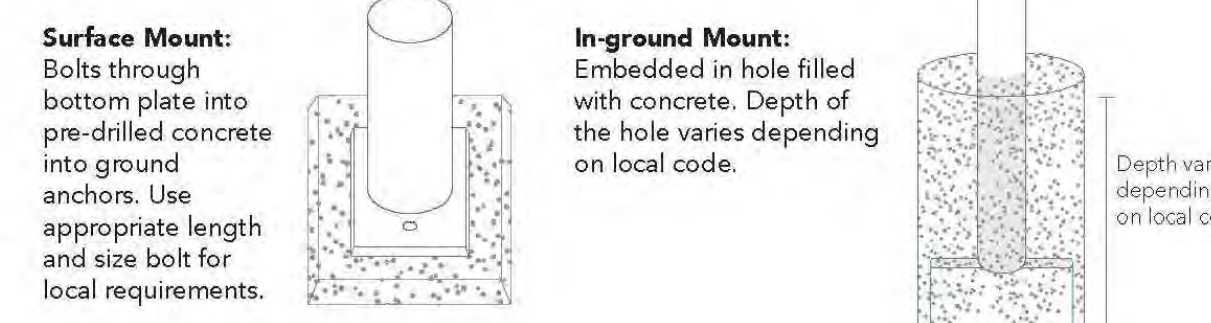
**BICYCLE RACK DETAIL**

NOT TO SCALE  
\* BIKE RACK MUST BE IN ACCORDANCE WITH BIKE USA STANDARDS

**U-Rack Bike Rack** Model: 543-1054  
Specifications Page 1



**Product Details:**  
 Dimensions Length 24" / Depth 1.9" / Height 36" (46" In Ground) / Mounting Plates 6"  
 Weight Surface Mount: 19-lbs In-ground: 22-lbs  
 Styling Contemporary  
 Capacity Holds 2 Bikes  
 Finish Durable baked-on powder coat or hot dipped galvanized  
 Construction Standard-Duty 1.5" Schedule 40 Pipe (1.9" OD) Steel



**Detention Basin Retaining Wall Detail**

SCALE: 1"=10'  
 NOTE: TP = TOP OF PAVEMENT  
 TW = TOP OF WALL

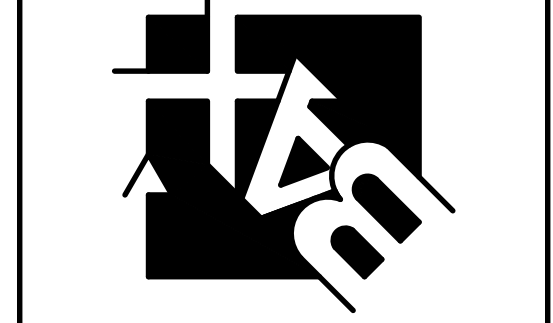


**CALL BEFORE YOU DIG!**  
 1-800-DIG-RITE

UNDERGROUND UTILITIES HAVE BEEN PLOTTED FROM AVAILABLE INFORMATION AND THEREFORE THEIR LOCATIONS SHALL BE CONSIDERED APPROXIMATE ONLY. THE VERIFICATION OF THE LOCATION OF ALL UNDERGROUND UTILITIES, EITHER SHOWN OR NOT SHOWN ON THESE PLANS SHALL BE THE RESPONSIBILITY OF THE CONTRACTOR, AND SHALL BE LOCATED PRIOR TO ANY GRADING OR CONSTRUCTION OF THE IMPROVEMENTS.

**PROJECT TITLE:**  
**CONSTRUCTION PLANS FOR**  
**Dollar General**  
**395 TR Hughes Boulevard**  
**O'Fallon, MO 63366**

**ENGINEERING FIRM:**  
**PLANNING SURVEYING**  
 221 Point View Blvd.  
 St. Charles, MO 63301  
 636-928-5562  
 FAX 928-1718



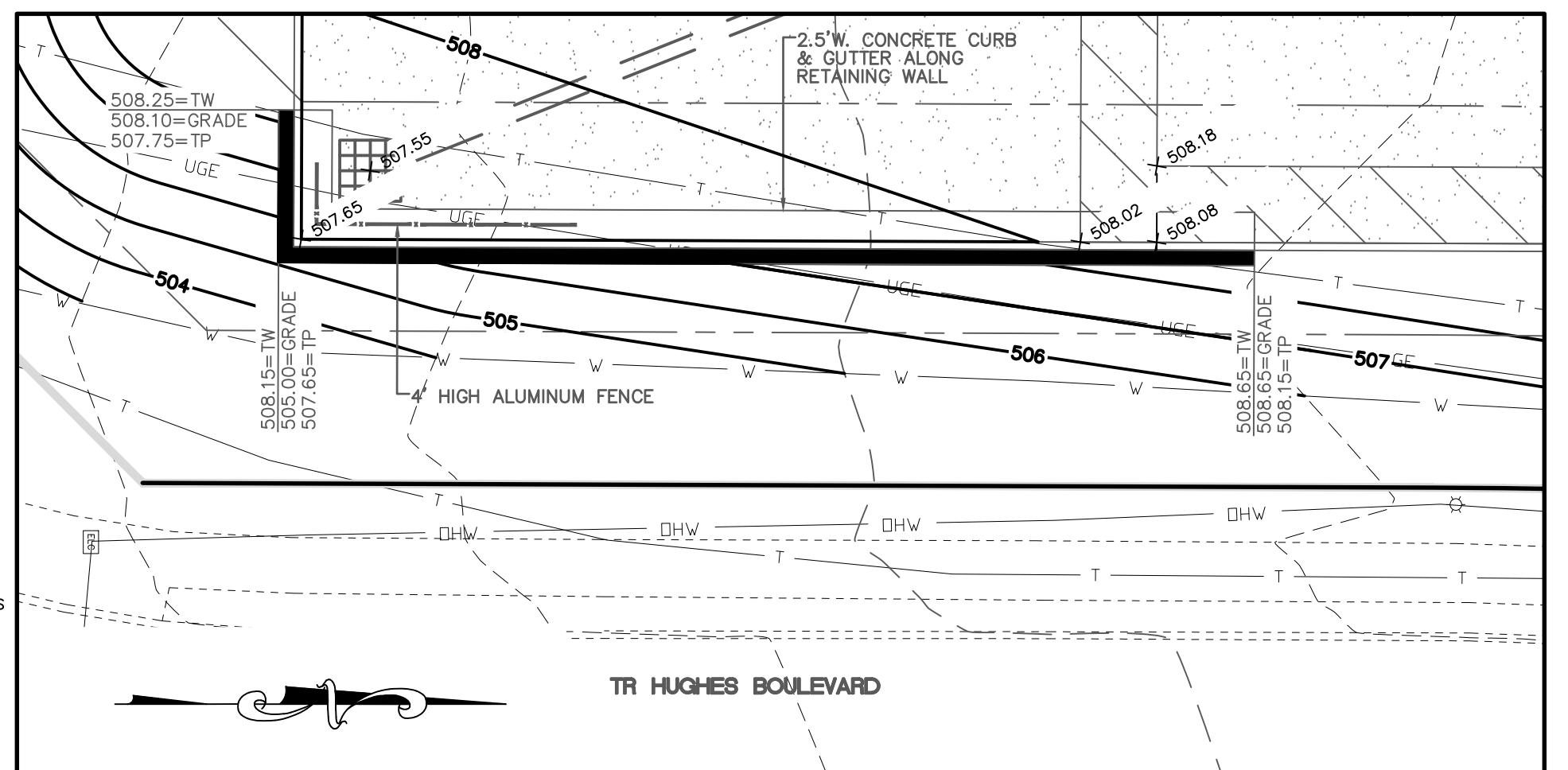
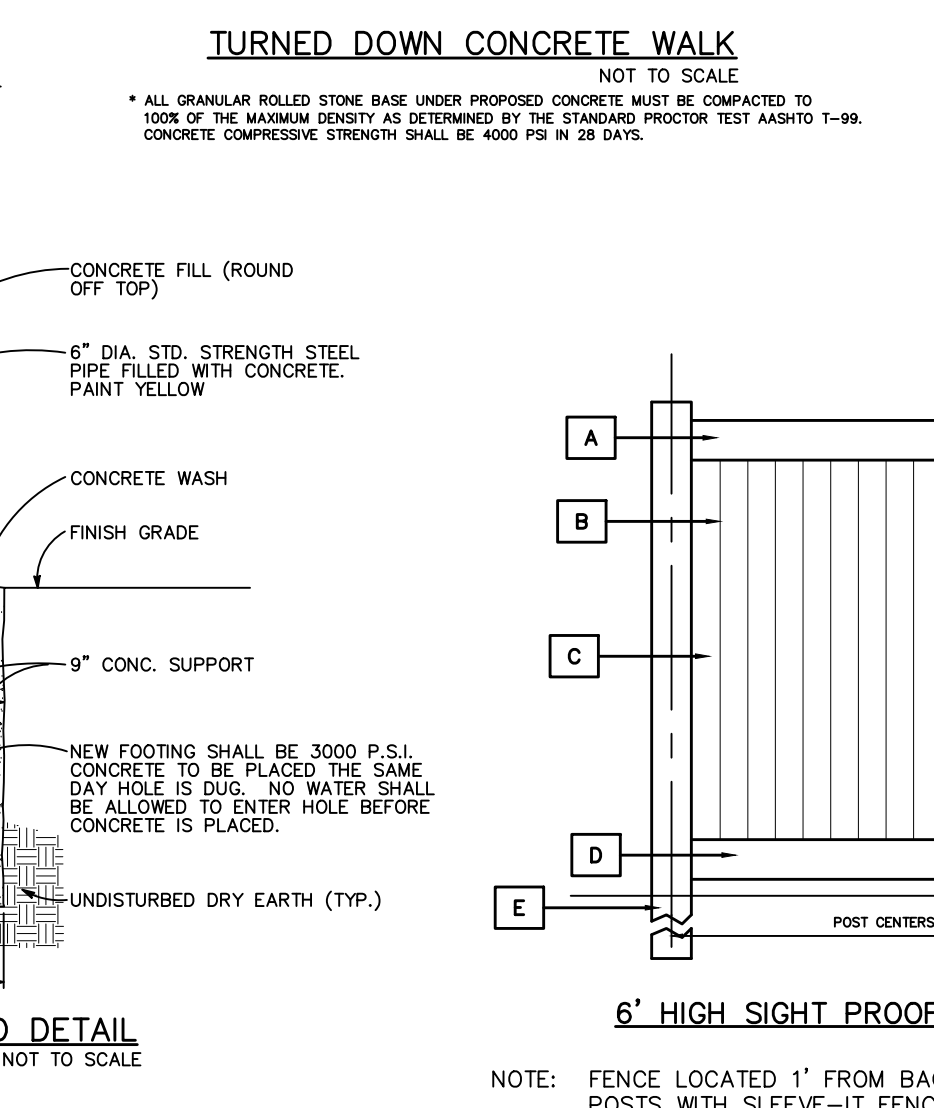
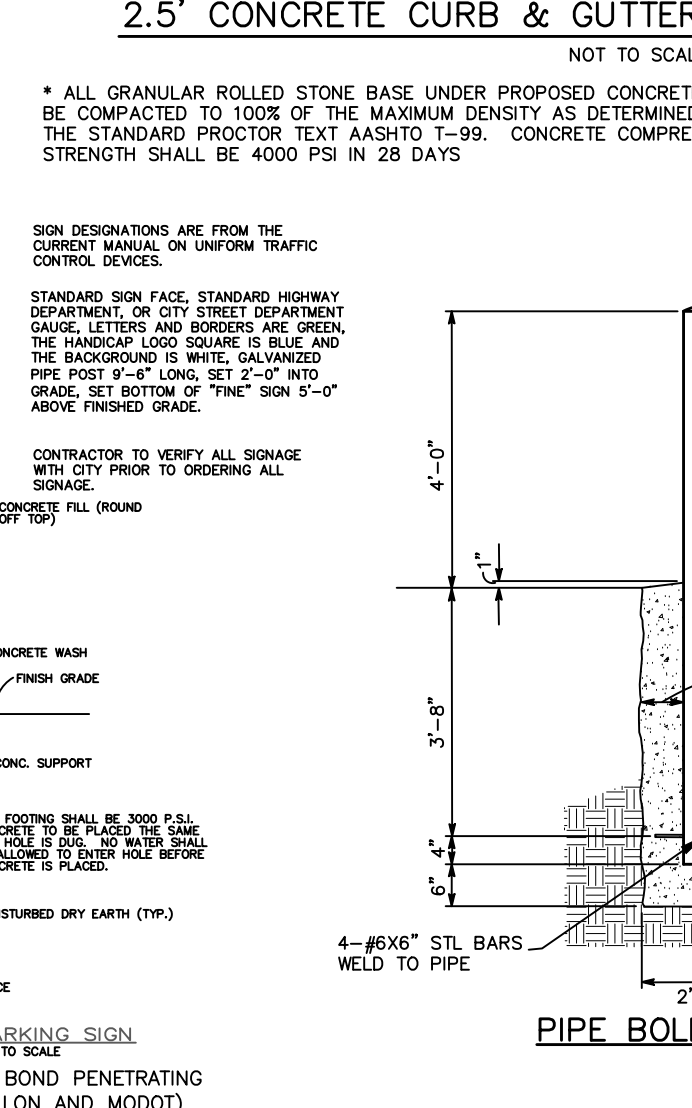
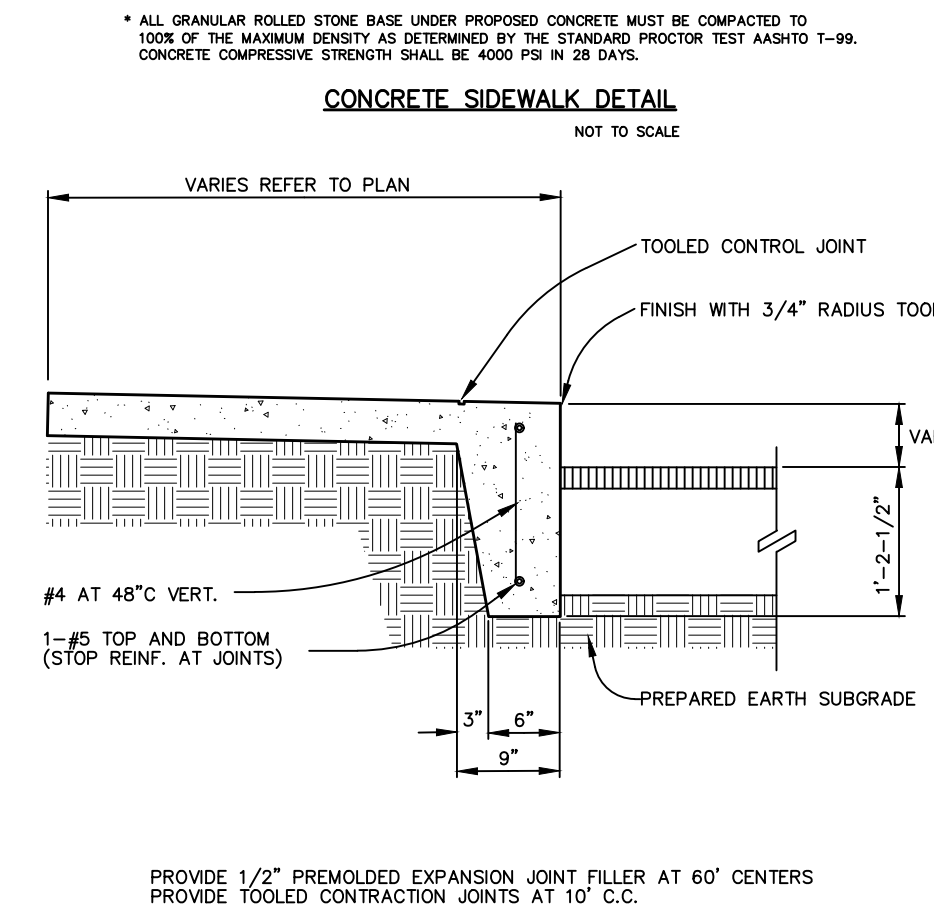
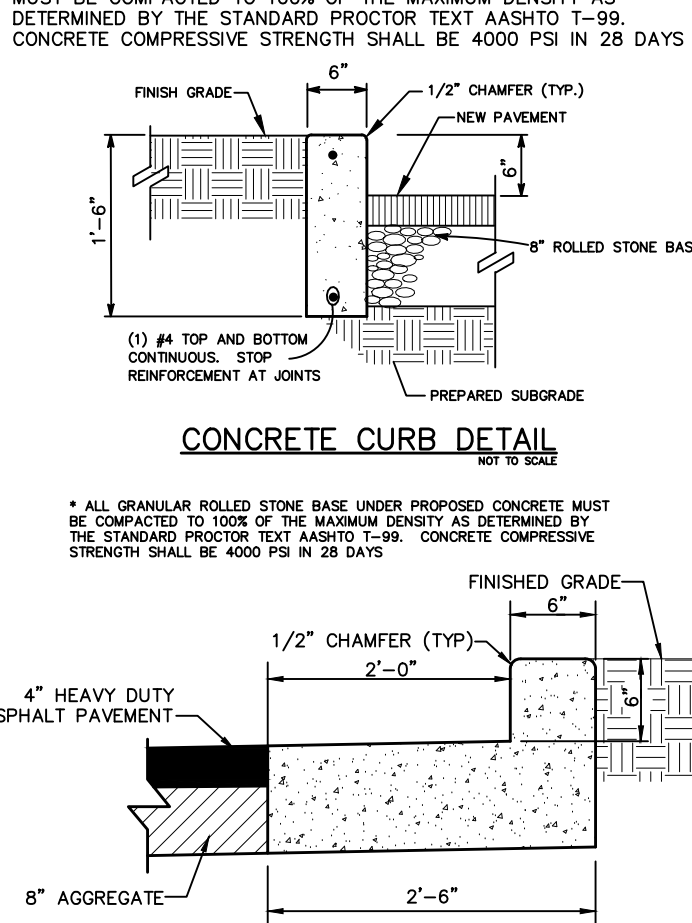
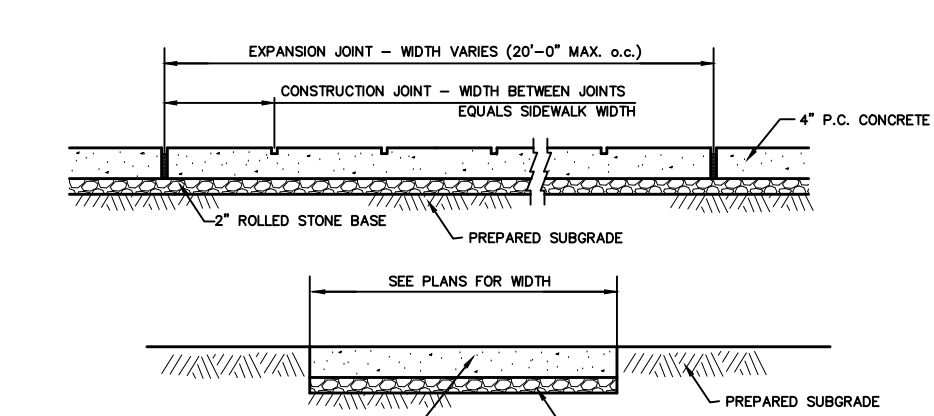
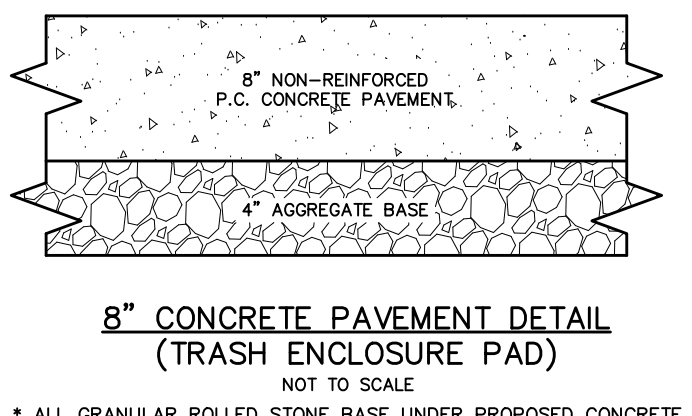
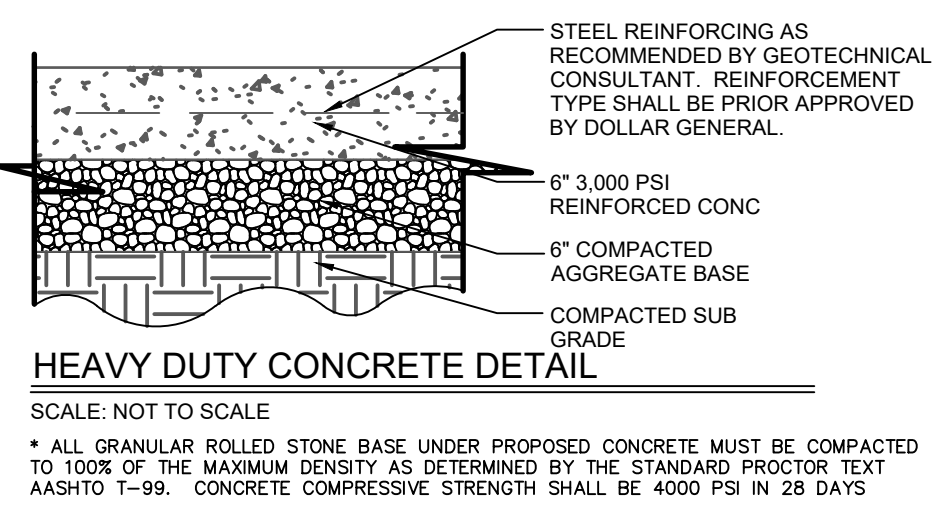
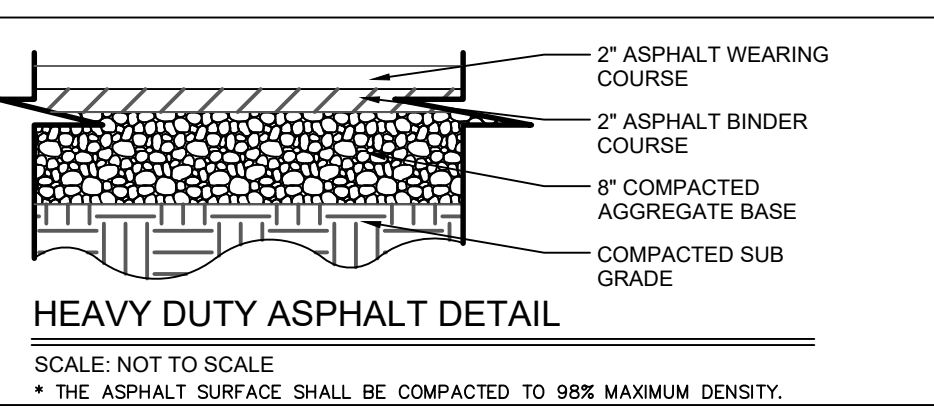
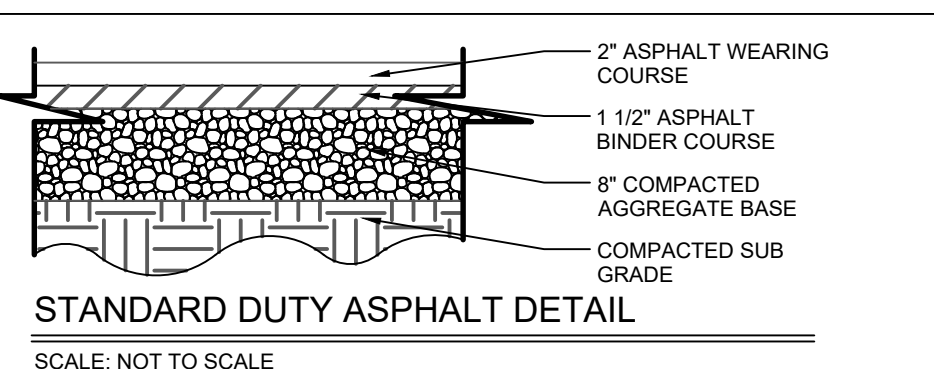
I HEREBY CERTIFY THAT I AM THE DESIGNER OF THESE PLANS AND I AM A LICENSED PROFESSIONAL ENGINEER IN THE STATE OF MISSOURI.



Gregory D. Walker  
 Civil Engineer  
 2637292543  
 Copyright © 2022  
 Five Engineers Company, Inc.  
 Authority No. 000655  
 All Rights Reserved

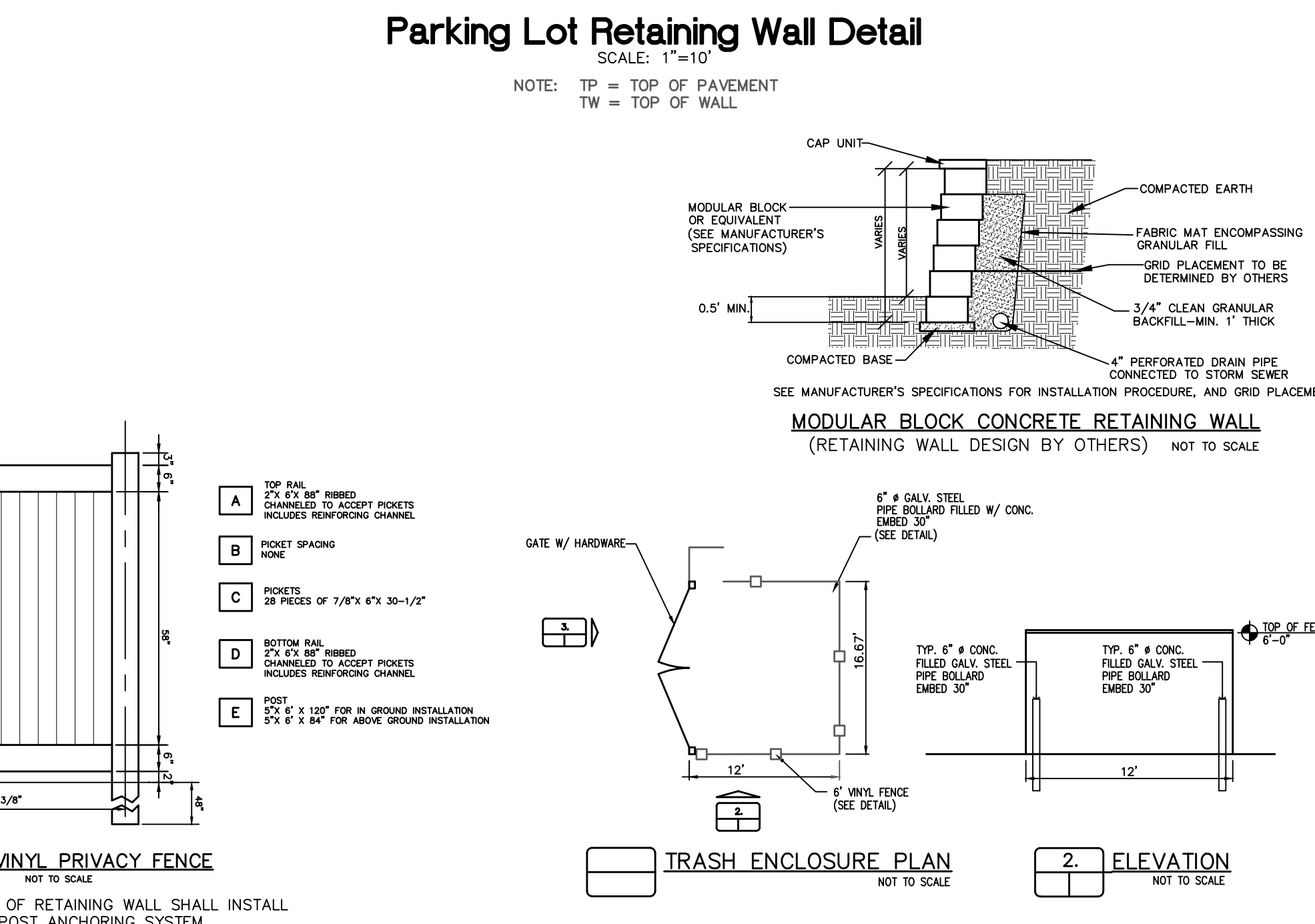
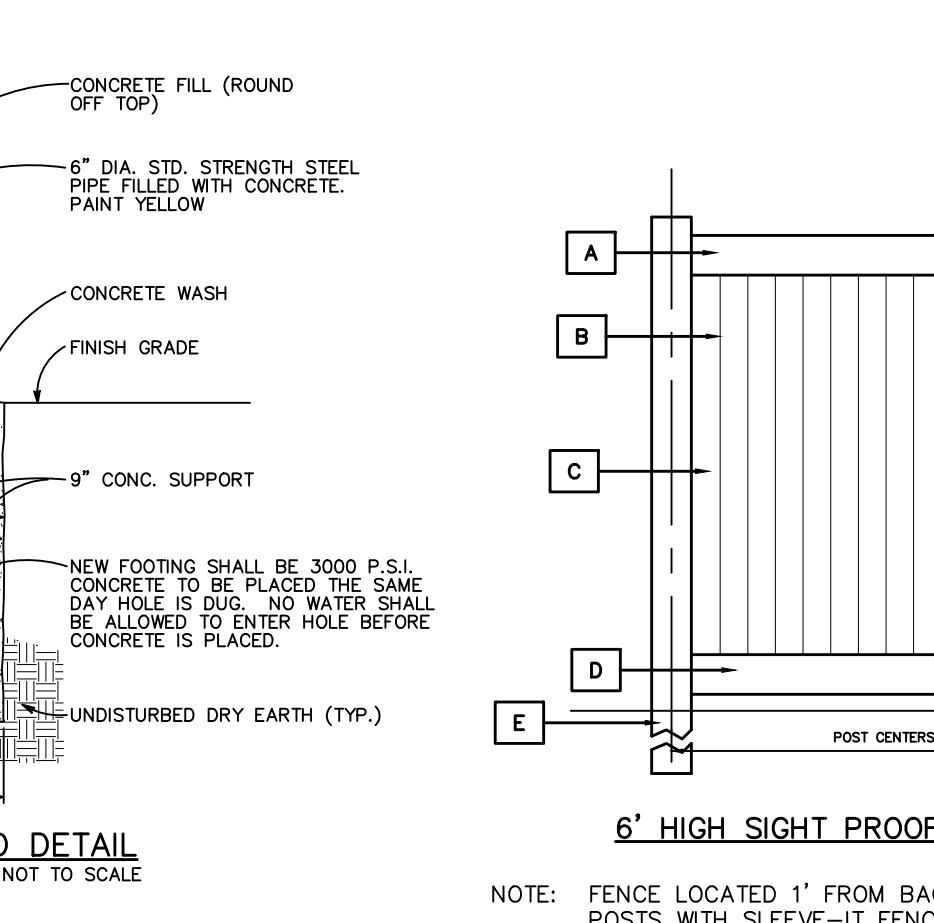
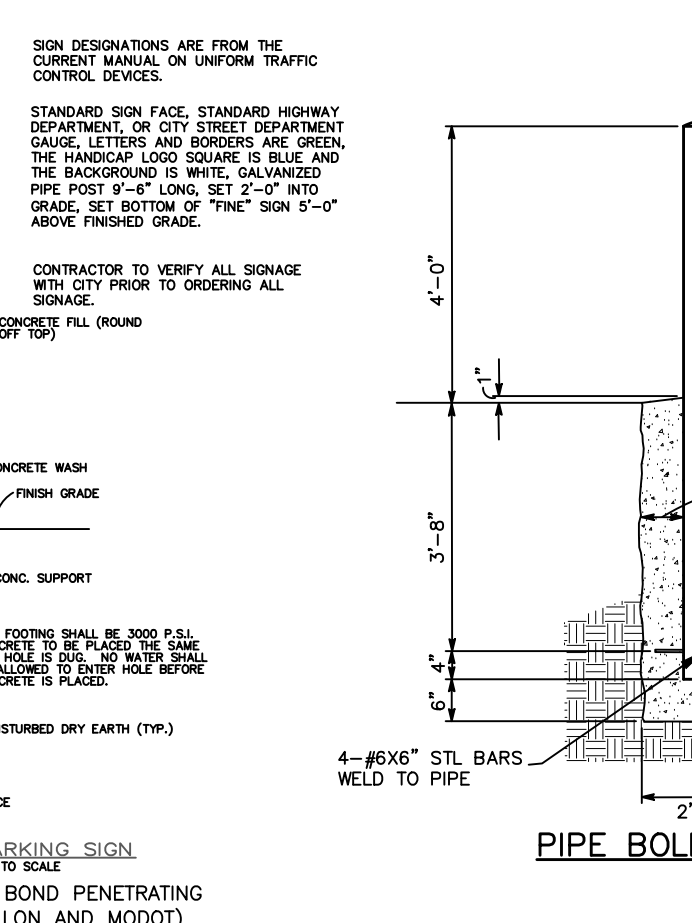
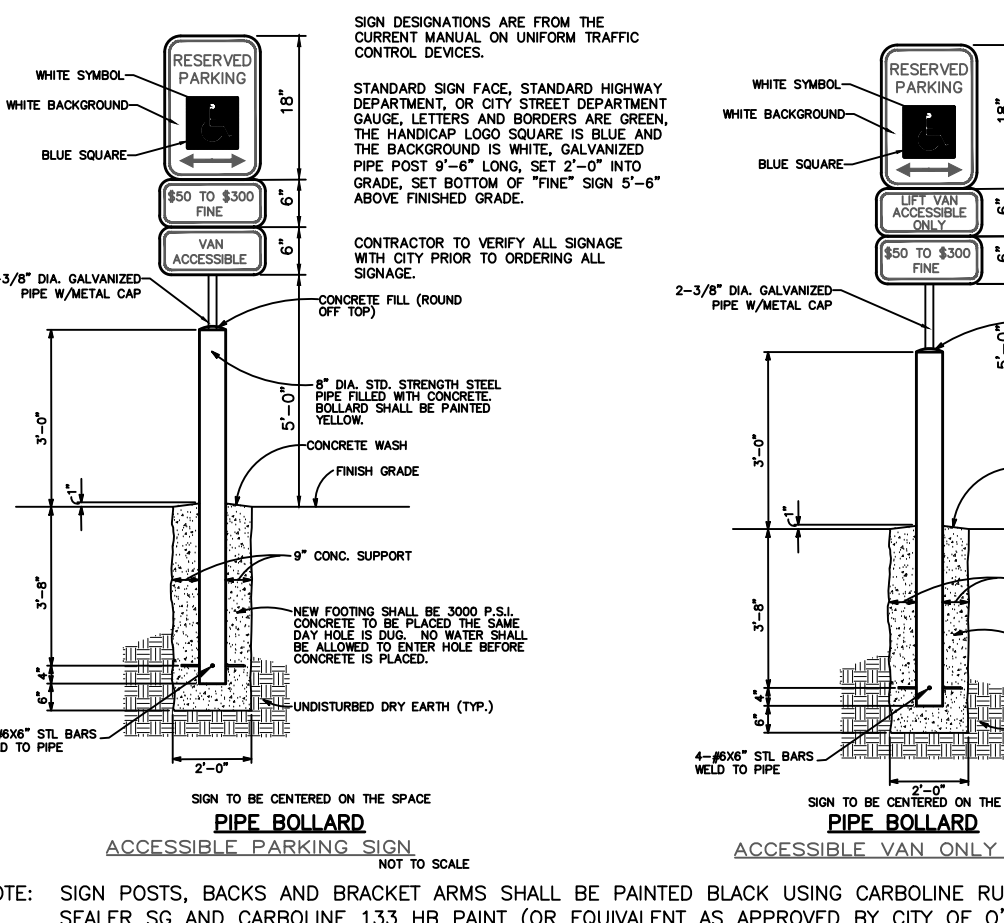
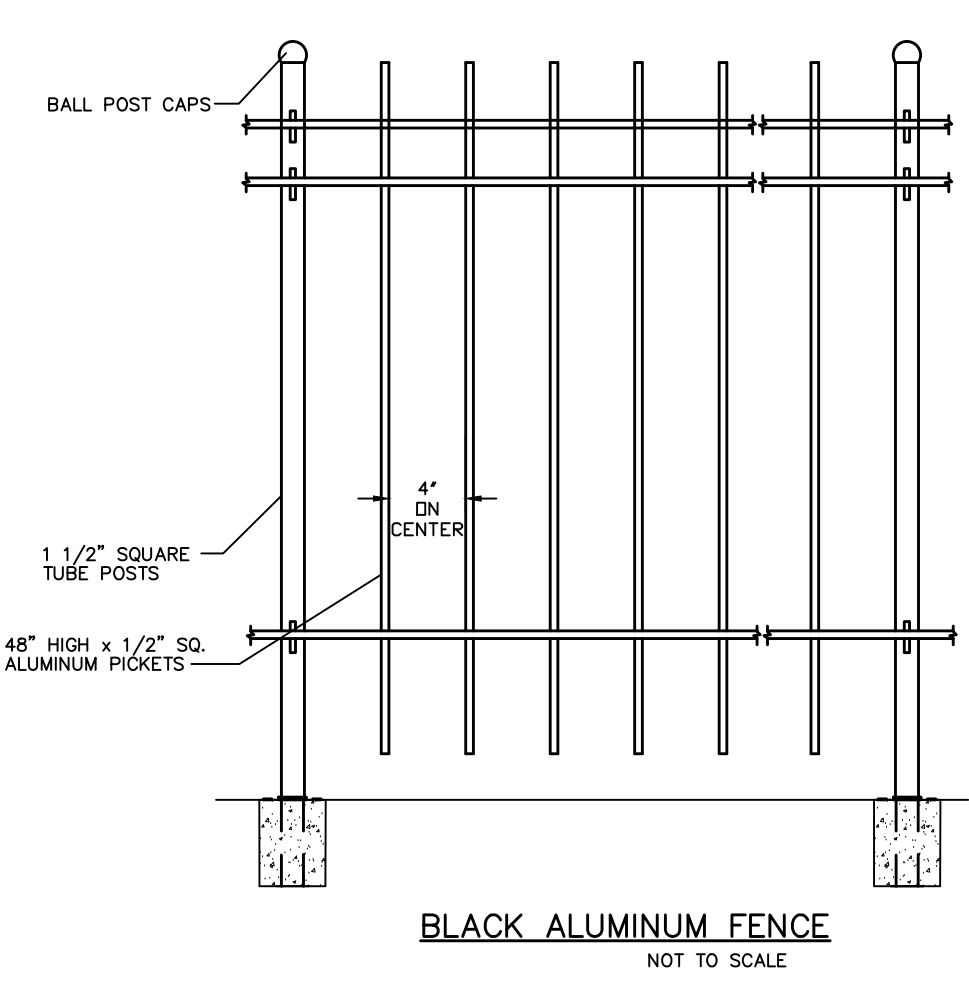
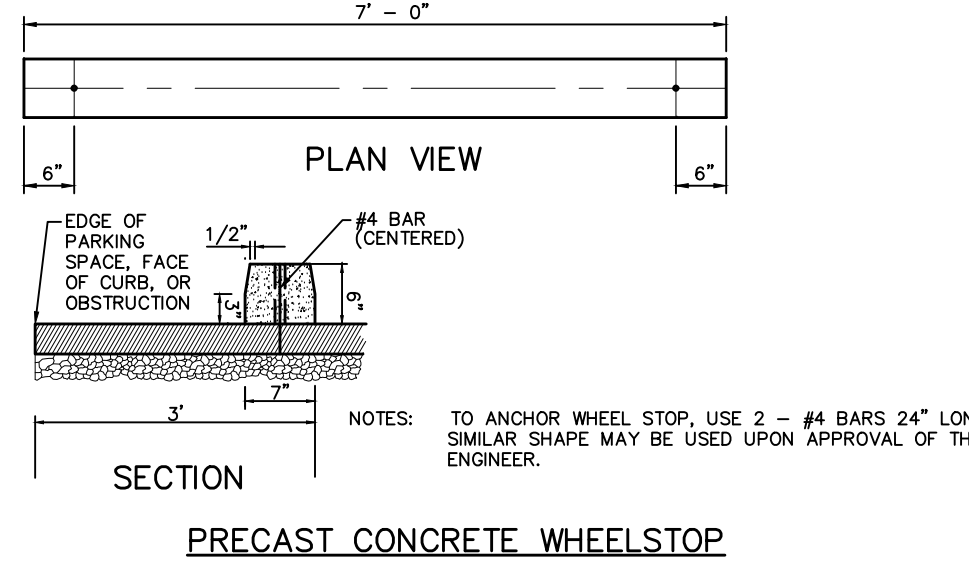
**REVISIONS**

12-21-22	CITY COMMENTS
01-04-23	CITY COMMENTS
01-06-23	CITY COMMENTS
05-03-23	DG REVISIONS
05-17-23	CITY COMMENTS
07-11-23	4' HIGH FENCE



**Parking Lot Retaining Wall Detail**

SCALE: 1"=10'  
 NOTE: TP = TOP OF PAVEMENT  
 TW = TOP OF WALL



**Developer / Owner:**  
**DG Partners L.L.C.**  
**5330 Salt River Road**  
**St. Peters, MO 63376**  
**(636) 970-0330**

**P+Z No. 22-009150**  
 Approved: 10-06-22  
**City No. #**  
**Page No.**  
**14 of 16**

**CONSTRUCTION DETAILS**