

LEGEND

L.D. - NOMINAL PIPE SIZE
O.D. - OUTSIDE DIAMETER OF PIPE
H - COVER ABOVE TOP OF PIPE
A - EMBEDDED BELOW PIPE (SEE TABLE)

TABLE OF EMBEDDED DEPTHS BELOW PIPE		
L.D.	A MIN. SOIL	A MIN. ROCK
27" & SMALLER	3"	6"

GRANULAR BEDDING SHALL BE CRUSHED ROCK OR PEA GRAVEL WITH NOT LESS THAN 95% PASSING 1/2" (95% PASSING 3/4" FOR 30" AND LARGER PIPE) AND NOT LESS THAN 95% RETAINED ON A #4; TO BE PLACED IN NOT MORE THAN 6" LAYERS AND COMPACTED BY SLICING WITH A SHOVEL OR VIBRATING.

COMPACTED BACK FILL SHALL BE FINELY DIVIDED JOB EXCAVATED MATERIAL FREE FROM DEBRIS, ORGANIC MATERIAL AND STONES, PLACED IN UNIFORM LAYERS NOT MORE THAN 6" THICK, COMPACTED TO 95% MAXIMUM DENSITY AS DETERMINED BY A.S.T.M. D958, OR GRADED AGGREGATE. GRANULAR BACK FILL MATERIAL MAY BE SUBSTITUTED FOR ALL OR PART OF COMPACTED BACK FILL.

TAMPED BACK FILL SHALL BE FINELY DIVIDED JOB EXCAVATED MATERIAL FREE FROM DEBRIS, ORGANIC MATERIAL AND STONES, HAND PLACED IN UNIFORM LAYERS NOT MORE THAN 6" THICK AND TAMPED AROUND CONDUIT PIPE. GRANULAR BACK FILL MATERIAL MAY BE SUBSTITUTED FOR ALL OR PART OF TAMPED BACK FILL.

TRENCH BACK FILL SHALL BE AS REQUIRED IN THE "LAYING AND BACK FILL" SECTION OF THE DETAILED SPECIFICATIONS.

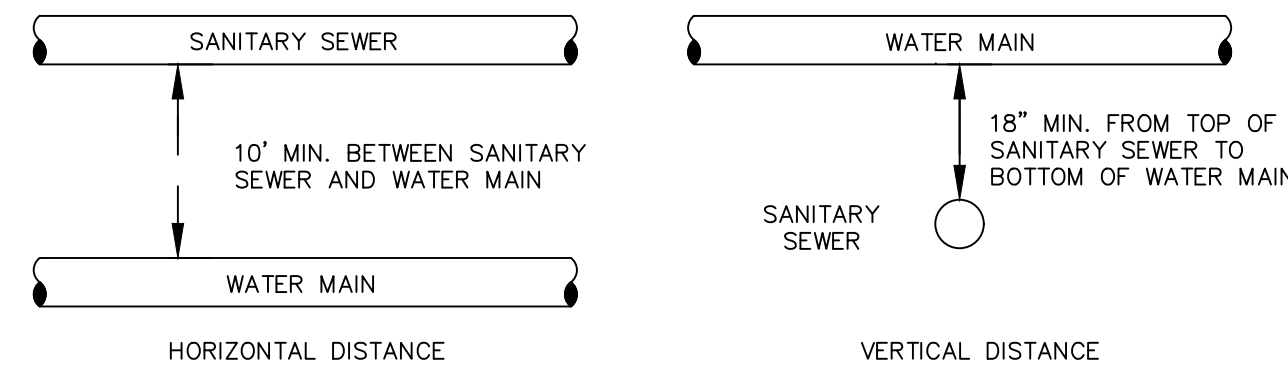
EMBEDDED THE TYPE OF EMBEDDED TO BE USED SHALL BE AS SPECIFIED IN THE PLANS AND SPECIFICATIONS.

TRACER WIRE REQUIRED ON ALL WATER MAINS

WATER MAIN EMBEDDED
NOT TO SCALE

CITY OF O'FALLON
ENGINEERING DEPARTMENT
O'FALLON, MISSOURI

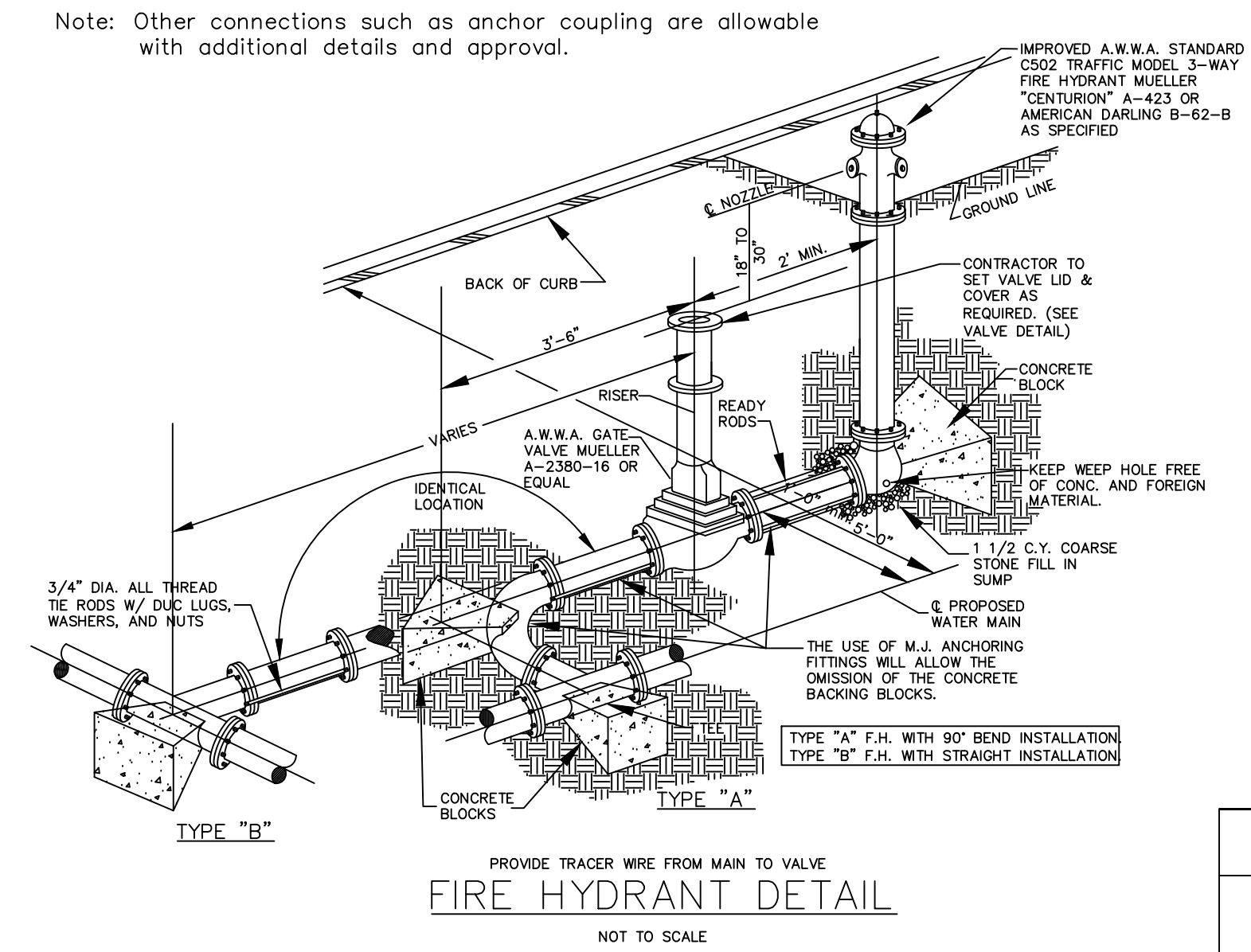
WATER MAIN EMBEDDED



TYPICAL WATER AND SEWER SEPARATION
NOT TO SCALE

CITY OF O'FALLON
ENGINEERING DEPARTMENT
O'FALLON, MISSOURI

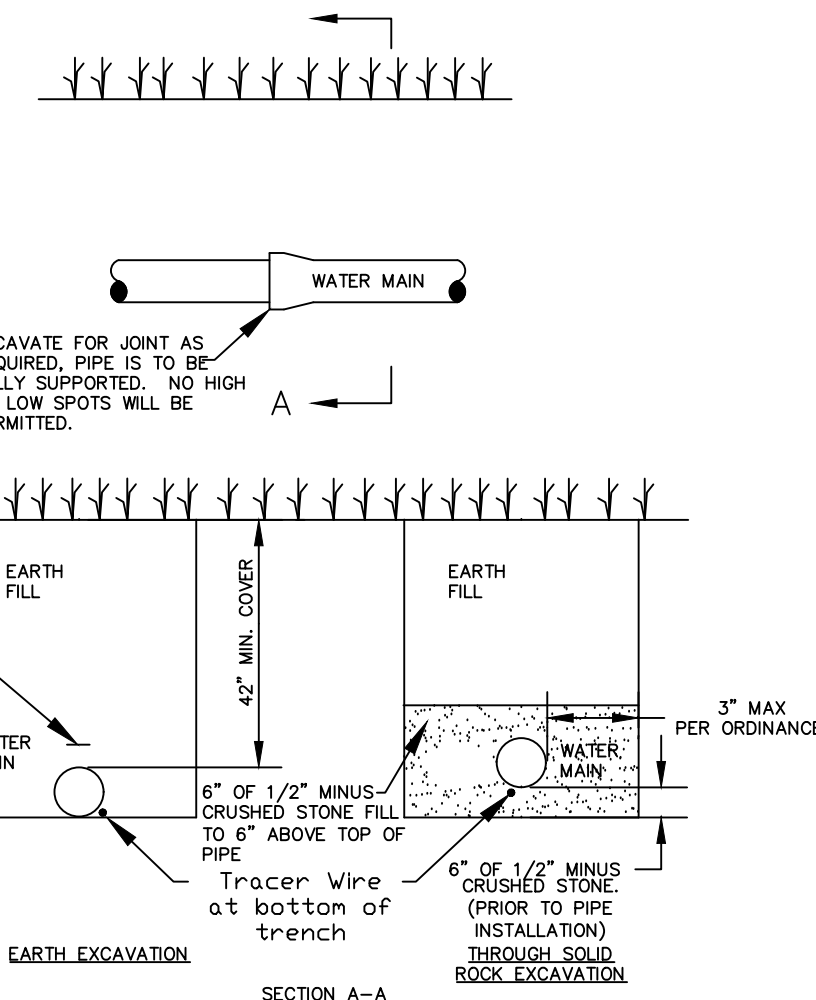
WATER AND SEWER SEPARATION DETAIL



FIRE HYDRANT DETAILS
NOT TO SCALE

CITY OF O'FALLON
ENGINEERING DEPARTMENT
O'FALLON, MISSOURI

FIRE HYDRANT DETAILS



TYPICAL WATER MAIN INSTALLATION DETAILS
NOT TO SCALE

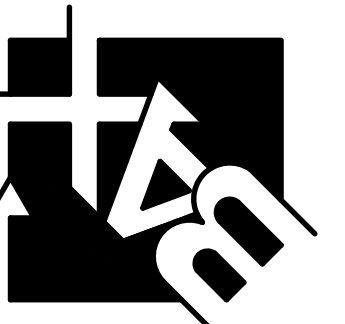
CITY OF O'FALLON
ENGINEERING DEPARTMENT
O'FALLON, MISSOURI

WATER MAIN INSTALLATION DETAIL

Ductile Iron Pipe installation shall follow the Ductile Iron Research Association (DIPRA) guide line.
The Installation of PVC Pipe shall follow the Uni-Bell PVC Pipe Association Handbook of PVC Design and Construction.

PROJECT TITLE:
CONSTRUCTION PLANS FOR
Dollar General
395 TR Hughes Boulevard
O'Fallon, MO 63366

ENGINEERING
PLANNING
SURVEYING
22 Point View Blvd.
St. Charles, MO 63301
636-928-5562
FAX 928-1718



I HEREBY CERTIFY THAT THE DOCUMENTS INCORPORATED IN THESE PLANS ARE THE PROPERTY OF THE ENGINEER AND ARE NOT TO BE REPRODUCED OR TRANSMITTED IN ANY FORM OR BY ANY MEANS, ELECTRONIC OR MECHANICAL, INCLUDING PHOTOCOPYING, RECORDING, OR BY ANY INFORMATION STORAGE AND RETRIEVAL SYSTEM, WITHOUT THE WRITTEN PERMISSION OF THE ENGINEER.

STATE OF MISSOURI
DANIEL WALKER
NUMBER
PE-2007-0204-0001
07/11/23
Civil Engineer
2607292543
Copyright © 2022
DWR Engineering Company, Inc.
Authority No. 000655
All Rights Reserved

REVISIONS

12-21-22	CITY COMMENTS
01-04-23	CITY COMMENTS
01-06-23	CITY COMMENTS
05-03-23	DG REVISIONS
05-17-23	CITY COMMENTS
07-11-23	4' HIGH FENCE

Developer / Owner:
DG Partners L.L.C.
5330 Salt River Road
St. Peters, MO 63376
(636) 970-0330

P+Z No. 22-009150
Approved: 10-06-22
City No. #

Page No.
16 of 16

CONSTRUCTION DETAILS