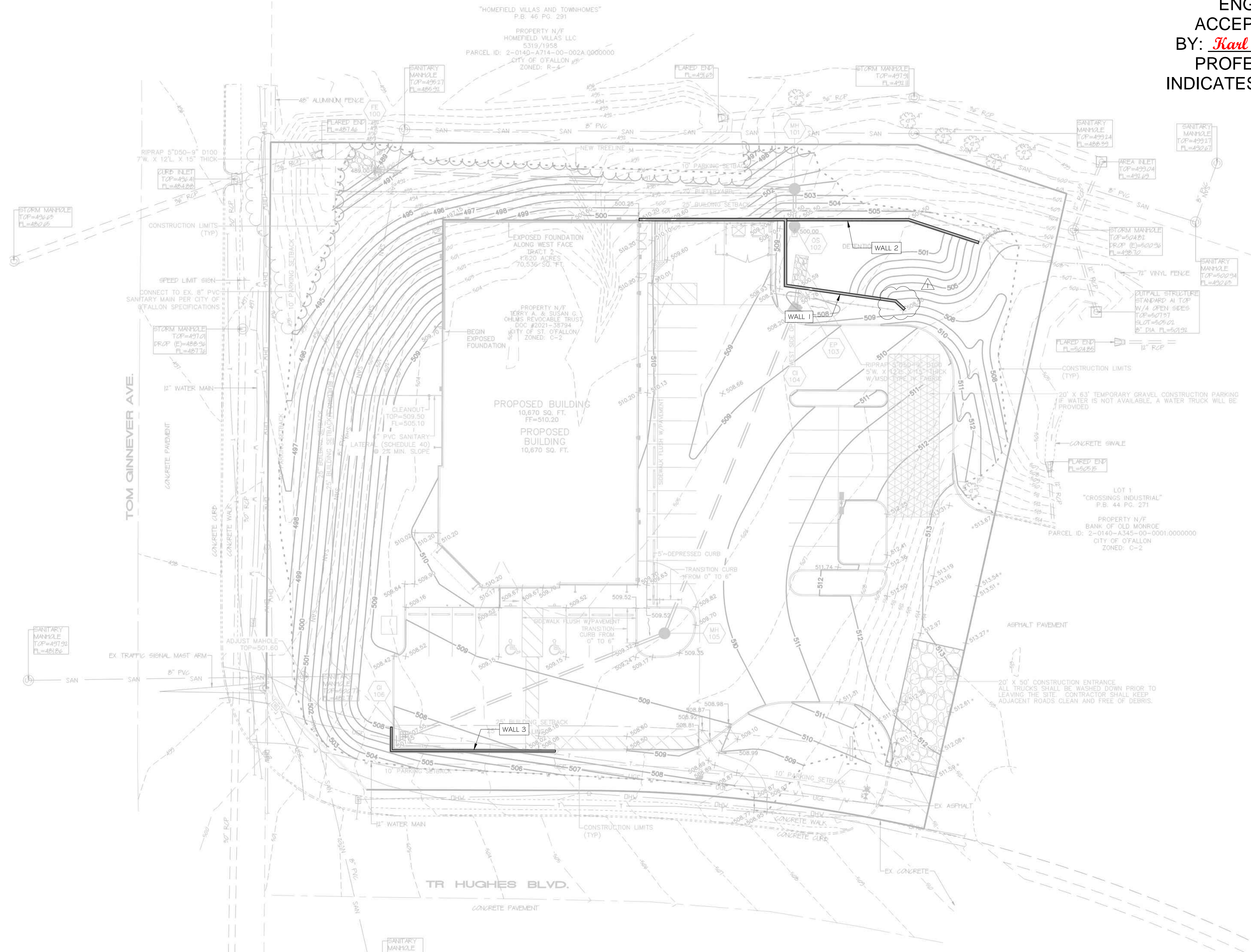


DOLLAR GENERAL RETAINING WALLS

CITY OF O'FALLON
 ENGINEERING DEPARTMENT
 ACCEPTED FOR CONSTRUCTION
 BY: Karl Ebert DATE: 07/13/2023
 PROFESSIONAL ENGINEER'S SEAL
 INDICATES RESPONSIBILITY FOR DESIGN



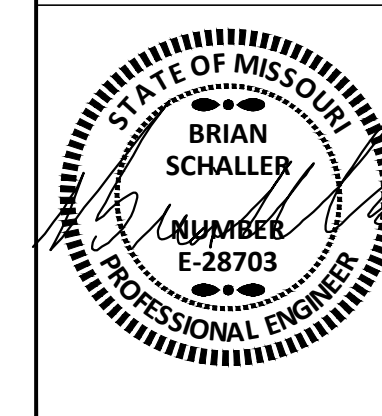
STRUCTURAL DESIGN HEREIN REPRESENTS A FINISHED STRUCTURE. THE GENERAL CONTRACTOR/OWNER SHALL PROVIDE ALL INTERIM BRACING, SHORING, INTERIM DRAINAGE PROVISIONS, DRAINAGE DIVERSION AND EROSION PROTECTION REQUIRED UNTIL FINAL CAPPING, PAVING, CURBING AND COMPLETION OF FINAL STORM DRAIN SYSTEM IS COMPLETE.

REV	DATE	DESCRIPTION
3	7-13-23	DESIGN REVISION - SUBMITTAL COMS
2	6-28-23	DESIGN REVISION - SUBMITTAL COMS
1	5-9-23	DESIGN REVISION - PCO 2

ROSCH ENGINEERING
 18390 WINGS CORPORATE DRIVE
 CHESTERFIELD, MO 63005
 PHONE: 636-519-7770
 FAX: 636-532-7773
MO CERTIFICATE OF AUTHORITY #E-20120396G3

DOLLAR GENERAL
 O'FALLON, MO
 RETAINING WALL
 COVER SHEET

DESIGNED:	BCS
DRAWN:	JTM
DESIGN ENGINEER:	ECS
REVIEWED:	BCS
DATE:	3-27-23
JOB NO.:	22-1048
SHEET:	COVER



THESE PLANS ARE FOR THE EXCLUSIVE USE OF ROSCH CONSTRUCTION. USE OF THESE PLANS BY ANY OTHER ENTITY TO CONSTRUCT THE SUBJECT STRUCTURES WILL RENDER THE ENGINEERING SEAL SHOWN NULL AND VOID.