

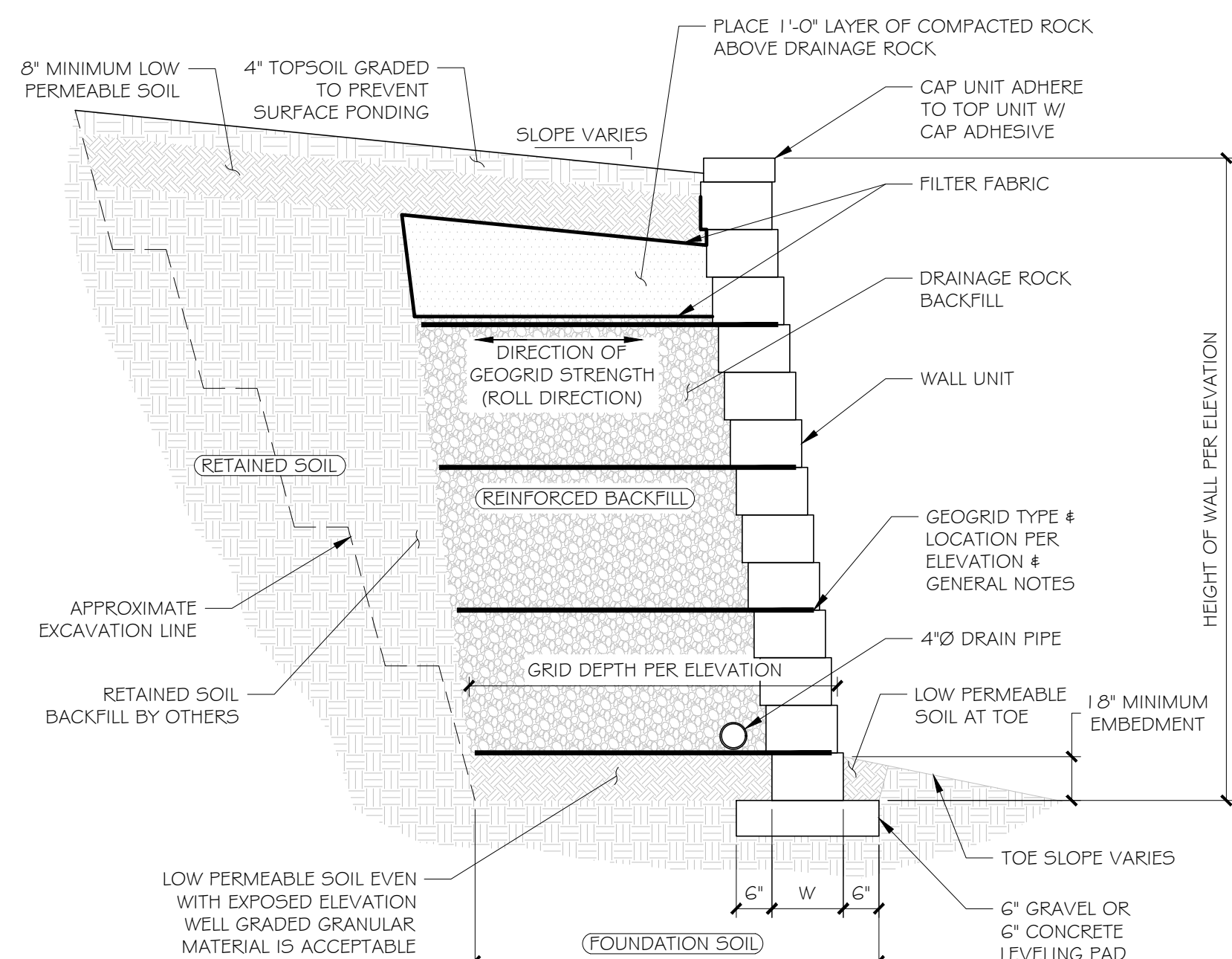
GENERAL NOTES:

1. RETAINING WALL DESIGN:
 - 1.1. STRUCTURAL DESIGN HEREIN REPRESENTS A FINISHED STRUCTURE. THE GENERAL CONTRACTOR/OWNER SHALL PROVIDE ALL INTERIM BRACING, SHORING, INTERIM DRAINAGE PROVISIONS, DRAINAGE DIVERSION AND EROSION PROTECTION REQUIRED UNTIL FINAL CAPPING, PAVING, CURBING AND COMPLETION OF FINAL STORM DRAIN SYSTEM.
 - 1.1.1. IT IS THE RESPONSIBILITY OF THE GENERAL CONTRACTOR/OWNER TO ENSURE THAT THE FINISHED SITE DRAINAGE IS DIRECTED AWAY FROM THE RETAINING WALL SYSTEM.
 - 1.1.2. IT IS THE RESPONSIBILITY OF THE GENERAL CONTRACTOR/OWNER TO ENSURE THAT THE SURFACE WATER RUNOFF FROM ADJACENT CONSTRUCTION AREAS IS NOT ALLOWED TO ENTER THE RETAINING WALL AREA OF THE CONSTRUCTION SITE.
 - 1.2. THE DESIGN OF THE SEGMENTAL RETAINING WALLS IS IN ACCORDANCE WITH NCMAS DESIGN MANUAL FOR SEGMENTAL RETAINING WALLS 3RD EDITION AND NCMAS SEGMENTAL RETAINING WALLS BEST PRACTICES GUIDE AND INCLUDES EXTERNAL STABILITY; SLIDING AND OVERTURNING OF THE REINFORCED MASS, AND INTERNAL STABILITY; PULLOUT, CONNECTION STRENGTH AND TENSILE STRENGTH OF THE GEOGRID AS WELL AS FACIAL STABILITY OF THE FACE UNITS. THE APPLIED BEARING PRESSURES ARE LISTED ON THE INDIVIDUAL WALL PROFILES.
 - 1.3. SCOPE OF DESIGN SERVICES ARE LIMITED TO THOSE DEFINED FOR 'SRW (RETAINING WALL) ENGINEER' IN THE NCMAS BEST PRACTICES MANUAL (2017) AND NCMAS TEK 15-03A. ALL OTHER ENGINEERING SERVICES ARE EXCLUDED.
 - 1.4. THE DESIGN OF THE SEGMENTAL RETAINING WALLS IS BASED ON THE FOLLOWING DOCUMENTS:
 - DRAWING SHEET 5 OF 16 DATED 7/11/2023 PREPARED BY BAX,
 - GEOTECHNICAL REPORT DATED 3/7/2023 PREPARED BY PROFESSIONAL SERVICE INDUSTRIES, INC. PSI PROJECT NUMBER 0040428-1
 - 1.5. THE DESIGN OF THE SEGMENTAL RETAINING WALL IS BASED ON THE INDIVIDUAL SOIL PROPERTIES AS LISTED WITHIN THESE PLANS AS WELL AS THE FOLLOWING CRITERIA:
 - SEISMIC ACCELERATION = N/A
 - GROUND WATER LOCATION = 2H/3 BELOW THE TOP OF LEVEL PAD (WHERE H = HEIGHT OF WALL)
 - HYDROSTATIC LOADING = NONE
 - SURCHARGE LOADING = SEE WALL ELEVATION(S)
2. SETTLEMENT:
 - 2.1. SEGMENTAL RETAINING WALLS ARE FLEXIBLE MASSES THAT CAN TOLERATE MINOR SETTLEMENT. SETTLEMENT SENSITIVE RIGID MASSES FOUNDED ON OR ABOVE THE SEGMENTAL RETAINING WALL SHOULD BE REVIEWED AND, IF REQUIRED, A SETTLEMENT ANALYSIS SHOULD BE PERFORMED BY THE PROJECT GEOTECHNICAL ENGINEER. SETTLEMENT ANALYSIS IS OUTSIDE OF ROSCH ENGINEERING'S SCOPE OF WORK.
3. MATERIAL PROPERTIES:
 - 3.1. SEGMENTAL CONCRETE WALL UNITS SHALL BE MANUFACTURED IN ACCORDANCE WITH ASTM C1372 HAVING A MINIMUM 28-DAY COMPRESSIVE STRENGTH OF 3,000 PSI AND A MAXIMUM MOISTURE ABSORPTION OF 8%. ALL UNITS SHALL BE SOUND AND FREE OF CRACKS OR OTHER DEFECTS THAT WOULD INTERFERE WITH THE PROPER PLACING OF THE UNIT OR SIGNIFICANTLY IMPAIR THE STRENGTH OR PERFORMANCE OF THE CONSTRUCTION.
 - 3.2. DRAINAGE ROCK SHALL BE A CLEAN CRUSHED STONE OR GRANULAR FILL SUCH AS 1" CLEAN MEETING THE FOLLOWING GRADATION AS DETERMINED IN ACCORDANCE WITH ASTM D 422:

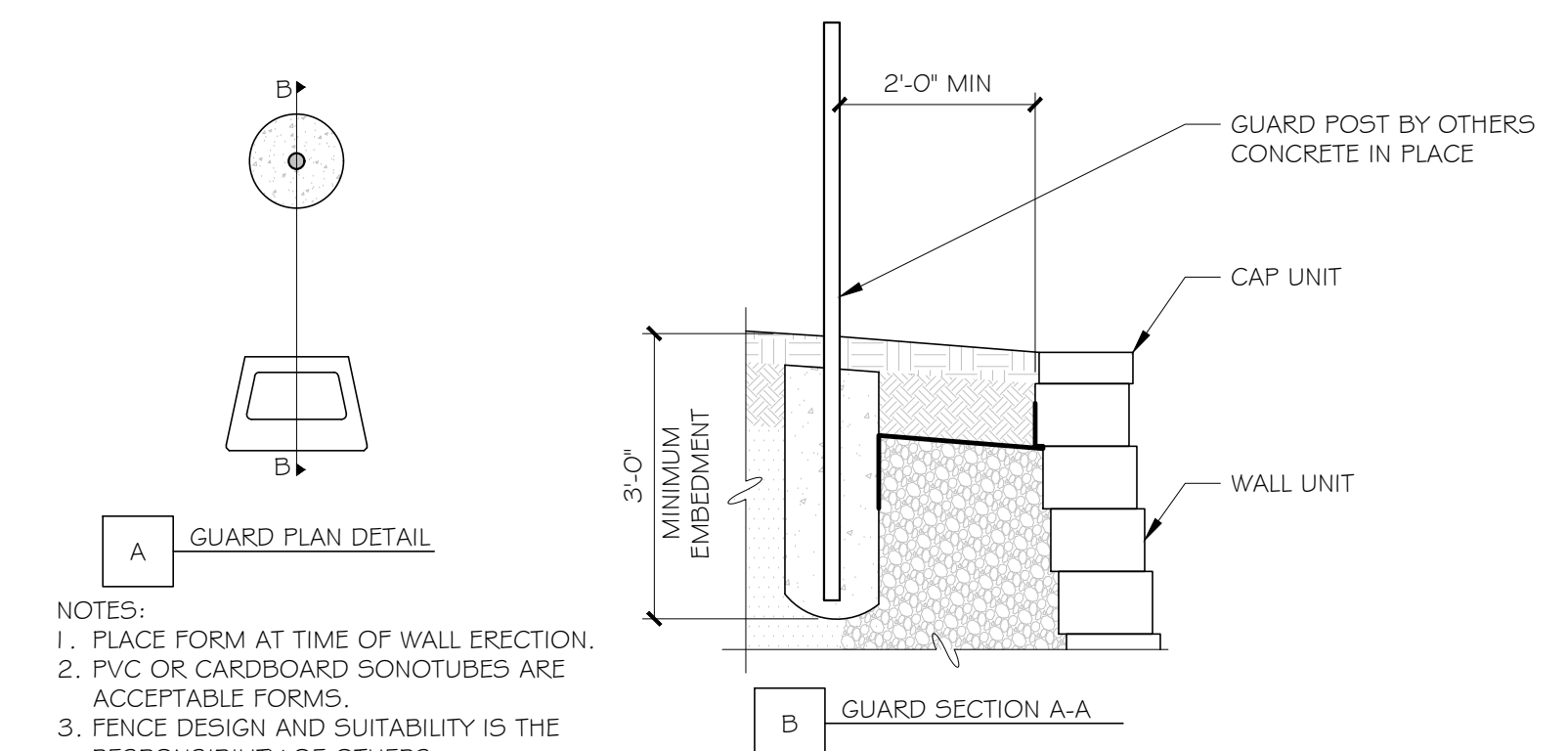
SIEVE SIZE	PERCENT PASSING
1 INCH	100
3/4 INCH	75-100
NO. 4	0-60
NO. 40	0-50
NO. 200	0-5
 - 3.3. COMPACTED ROCK SHALL BE FREE OF ORGANIC MATERIAL. THE ROCK SHALL BE A WELL GRADED GRAVEL OR LIMESTONE MEETING THE FOLLOWING GRADATION AS DETERMINED IN ACCORDANCE WITH ASTM D 422 AND A PI < 6:

SIEVE SIZE	PERCENT PASSING
1 INCH	100
NO. 4	20-100
NO. 40	0-60
NO. 200	0-15
 - 3.4. LOW PERMEABLE SOIL SHALL CONSIST OF MATERIAL HAVING A MINIMUM PLASTICITY INDEX OF 1.0. NO MORE THAN 10% SHALL BE RETAINED ON A NO. 4 SIEVE AND NO LESS THAN 35% SHALL PASS A NO. 200 SIEVE. MATERIAL WITH A USC DESIGNATION OF ML, CL, OR OL ARE ACCEPTABLE FOR USE AS LOW PERMEABLE SOIL.
 - 3.5. THE GEOGRID SHALL BE A HIGH DENSITY POLYETHYLENE EXPANDED SHEET OR POLYESTER WOVEN FIBER MATERIAL, SPECIFICALLY FABRICATED FOR USE AS SOIL REINFORCEMENT. ACCEPTABLE GEOGRID TYPES AND MANUFACTURER AS FOLLOWS:
 - TYPE 1:
 - SF35 BY SYNTEN TECHNICAL FABRICS, INC.
 - SGU 60 BY STRATA SYSTEMS, INC.
 - MIRAGRID 3XT AS MANUFACTURED BY TENGATE GEOSYNTHETICS.
 - HF200 AS MANUFACTURED BY GEOSTAR TECHNOLOGIES, LLC.
 - 3.6. GEOTEXTILE FILTER FABRIC SHALL BE A NONWOVEN GEOTEXTILE COMPOSED OF POLYPROPYLENE FIBERS WITH A MINIMUM FLOW RATE OF 140 GPM/FT² WHEN TESTED ACCORDING TO ASTM D 4491.
 - 3.7. DRAINAGE PIPE SHALL BE A 4"Ø PERFORATED OR SLOTTED PVC OR CORRUGATED HDPE PIPE.
 - 3.8. DRAINAGE PIPE SHALL BE MANUFACTURED IN ACCORDANCE WITH ASTM F 405 OR ASTM F 758.
 - 3.9. CONSTRUCTION ADHESIVE SHALL BE EXTERIOR GRADE ADHESIVE AS RECOMMENDED BY THE SEGMENTAL CONCRETE WALL UNIT MANUFACTURER.
4. EXCAVATION:
 - 4.1. THE CONTRACTOR SHALL EXCAVATE TO THE LINES AND GRADES SHOWN ON THE PLANS. THE GENERAL CONTRACTOR SHALL TAKE PRECAUTIONS TO MINIMIZE OVER-EXCAVATION.
 - 4.2. EXCAVATION SUPPORT, INCLUDING THE STABILITY OF THE EXCAVATION AND ITS INFLUENCE ON ADJACENT PROPERTY IS THE RESPONSIBILITY OF THE GENERAL CONTRACTOR.
5. FOUNDATION SOIL PREPARATION:
 - 5.1. FOLLOWING EXCAVATION FOR THE LEVELING PAD AND THE REINFORCED SOIL ZONE, FOUNDATION SOIL SHALL BE EXAMINED BY THE OWNER'S GEOTECHNICAL ENGINEER TO ASSURE THE ACTUAL FOUNDATION SOIL STRENGTH MEETS OR EXCEEDS THE REQUIRED BEARING STRENGTH. SOIL NOT MEETING THE REQUIRED STRENGTH SHALL BE REMOVED AND REPLACED WITH SOIL MEETING THE DESIGN CRITERIA, AS DIRECTED BY THE OWNER'S GEOTECHNICAL ENGINEER.
 - 5.2. FOUNDATION SOIL IS DEFINED AS THE SOIL UNDER THE SEGMENTAL RETAINING WALL VOLUME, EXTENDING FROM THE TOE OF THE LEVELING PAD TO THE BACK OF THE REINFORCED MASS.

6. BASE LEVELING PAD INSTALLATION:
 - 6.1. LEVELING PAD SHALL BE PLACED AS SHOWN ON THE DRAWINGS AND CONSIST OF EITHER:
 - LEAN CONCRETE (2,000 PSI) - 6" MINIMUM THICK
 - WELL GRADED 1" GRAVEL WITH FINES - 6" MINIMUM THICK
 - 6.2. SAND OR GRAVEL BASE SHALL BE COMPACTED WITH 3 PASSES OF A VIBRATORY COMPACTOR TO PROVIDE A FIRM, LEVEL BEARING PAD.
 - 6.3. LEAN CONCRETE SHALL CURE A MINIMUM OF 12 HOURS PRIOR TO UNIT PLACEMENT.
 - 6.4. LEVELING PAD SHALL BE CONSTRUCTED TO INSURE FULL BEARING OF RETAINING WALL UNITS.
7. UNIT INSTALLATION:
 - 7.1. THE FIRST COURSE OF SEGMENTAL CONCRETE WALL UNITS SHALL BE PLACED ON THE LEVELING PAD AND CHECKED FOR LEVEL, ALIGNMENT, AND FULL CONTACT WITH BASE.
 - 7.2. UNITS SHALL BE PLACED SIDE BY SIDE FOR FULL LENGTH OF WALL. ALIGNMENT SHALL BE DONE BY MEANS OF A STRING LINE OR OFFSET MEASUREMENT FROM BASE LINE.
 - 7.3. PLACE DRAINAGE AGGREGATE WITHIN THE BLOCK CORES DIRECTLY BEHIND AND BETWEEN THE UNITS AS SHOWN IN DETAILS. WHERE THE REINFORCED BACKFILL IS COMPACTED ROCK, PLACE REINFORCED BACKFILL DIRECTLY AGAINST DRAINAGE FILL. CONSOLIDATE DRAINAGE AGGREGATE WITH 2 PASSES OF A VIBRATORY COMPACTOR. COMPACTION TESTING OF DRAINAGE AGGREGATE IS NOT REQUIRED. EXCESS MATERIAL SHALL BE REMOVED FROM TOP OF UNITS PRIOR TO INSTALLATION OF NEXT COURSE.
 - 7.4. LAY UP EACH COURSE INSURING POSITIVE CONTACT BETWEEN PREVIOUS COURSE IS ACHIEVED.
8. GEOGRID INSTALLATION:
 - 8.1. GEOGRID SHALL BE LAID AT THE PROPER ELEVATION AND ORIENTATION AS SHOWN ON THE DRAWINGS.
 - 8.2. THE GEOGRID REINFORCEMENT SHALL BE LAID HORIZONTALLY ON LEVEL, COMPACTED BACKFILL, AND EMBEDDED IN THE BLOCK.
 - 8.3. PLACE GEOGRID ON CONCRETE WALL UNITS, PLACE THE NEXT COURSE OF UNITS, PLACE THE DRAINAGE FILL, PULL GEOGRID TIGHT PRIOR TO BACKFILLING.
 - 8.4. CORRECT ORIENTATION OF THE GEOGRID SHALL BE VERIFIED.
 - 8.5. 3" OF REINFORCED BACKFILL SHALL BE PLACED BETWEEN ALL LOCATIONS OF OVERLAPPING GEOGRID.
9. BACKFILL PLACEMENT:
 - 9.1. REINFORCED BACKFILL MATERIAL SHALL BE PLACED IN 8" MAXIMUM LIFTS.
 - 9.2. COMPACTED ROCK SHALL BE COMPACTED TO A MINIMUM 95% OF STANDARD PROCTOR DENSITY PER ASTM 698 UNLESS NOTED OTHERWISE ON THE INDIVIDUAL WALL PROFILES.
 - 9.3. DRAINAGE ROCK SHALL BE COMPACTED WITH A MINIMUM OF 2 PASSES OF A VIBRATORY COMPACTOR. FIELD DENSITY TESTING WILL NOT BE REQUIRED FOR DRAINAGE ROCK.
 - 9.4. ONLY LIGHTWEIGHT HAND-OPERATED COMPACTION EQUIPMENT SHALL BE USED WITHIN 3' OF THE BACK FACE OF BLOCK.
 - 9.5. REINFORCED BACKFILL SHALL BE PLACED, SPREAD, AND COMPACTED IN SUCH A MANNER THAT ELIMINATES THE DEVELOPMENT OF WRINKLES AND/OR MOVEMENT OF THE GEOGRID.
 - 9.6. REINFORCED BACKFILL SHALL BE PLACED AND COMPACTED FROM THE BACK OF THE WALL REARWARD INTO THE EMBANKMENT TO INSURE THAT THE GEOGRID REMAINS TIGHT.
 - 9.7. TRACKED CONSTRUCTION EQUIPMENT SHALL NOT BE OPERATED DIRECTLY ON THE GEOGRID. A MINIMUM BACKFILL THICKNESS OF 6" SHALL BE MAINTAINED TO OPERATE TRACKED VEHICLES OVER THE GEOGRID. TURNING OF TRACKED CONSTRUCTION EQUIPMENT SHALL BE KEPT TO A MINIMUM TO PREVENT TRACKS FROM DISPLACING THE FILL AND DAMAGING THE GEOGRID.
 - 9.8. AT THE END OF EACH DAY'S OPERATION, SLOPE THE LAST LEVEL OF COMPACTED BACKFILL AWAY FROM THE INTERIOR (CONCEALED) FACE OF THE WALL TO DIRECT SURFACE WATER RUNOFF FROM THE WALL FACE.
 - 9.8.1. IT IS THE RESPONSIBILITY OF THE GENERAL CONTRACTOR TO ENSURE THE FINISHED SITE DRAINAGE IS DIRECTED AWAY FROM THE RETAINING WALL SYSTEM.
 - 9.8.2. IT IS THE RESPONSIBILITY OF THE GENERAL CONTRACTOR TO ENSURE THE SURFACE WATER RUNOFF FROM ADJACENT CONSTRUCTION AREAS IS NOT ALLOWED TO ENTER THE RETAINING WALL AREA OF THE CONSTRUCTION SITE.
10. DRAIN PIPE INSTALLATION:
 - 10.1. DRAINAGE COLLECTION PIPES SHALL BE INSTALLED TO MAINTAIN GRAVITY FLOW OF WATER OUTSIDE OF THE REINFORCED SOIL ZONE. THE DRAINAGE COLLECTION PIPE SHOULD CONNECT INTO A STORM SEWER MANHOLE OR DAYLIGHT THROUGH THE FACE OF THE WALL.
11. CAP INSTALLATION:
 - 11.1. CAP UNITS SHALL BE ADHERED TO THE TOP UNITS USING MANUFACTURER SUPPLIED ADHESIVE BY PLACING TWO 1/4" BEADS OF ADHESIVE ON EACH UNIT ALONG THE ENTIRE LENGTH OF THE WALL. PRESS THE CAP UNITS FIRMLY INTO THE ADHESIVE AND ALLOW TO CURE.
12. FIELD QUALITY CONTROL:
 - 12.1. THE OWNER OR OWNER'S REPRESENTATIVE IS RESPONSIBLE FOR ENGAGING THE SERVICES OF AN INDEPENDENT THIRD PARTY INSPECTOR TO OBSERVE AND VERIFY ALL SOIL PROPERTIES AS WELL AS VERIFY CORRECT INSTALLATION OF ALL SYSTEM COMPONENTS TO MEET THE REQUIREMENTS OF THESE GENERAL NOTES AND DRAWINGS.
 - 12.2. TESTING METHODS, FREQUENCY AND VERIFICATION OF MATERIAL SPECIFICATIONS SHALL BE THE RESPONSIBILITY OF THE INDEPENDENT THIRD PARTY INSPECTOR. AT A MINIMUM, COMPACTION TESTING SHALL INCLUDE ONE COMPACTION TEST FOR EACH LIFT BUT NOT LESS THAN ONE TEST FOR EVERY 50 CUBIC YARDS OF COMPACTED FILL AT A SPACING NOT TO EXCEED 100'.

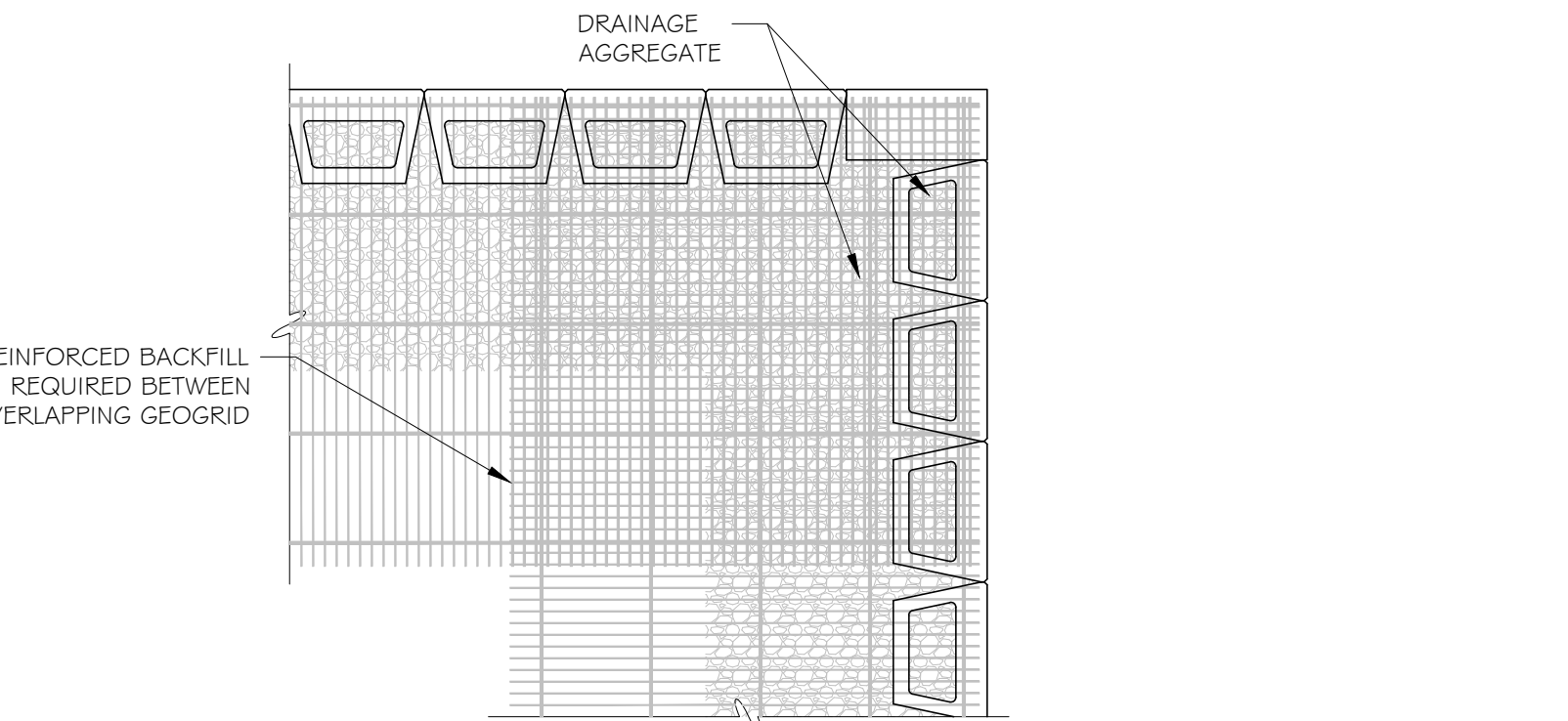


1 TYPICAL SECTION - DRAINAGE ROCK
D1 NTS

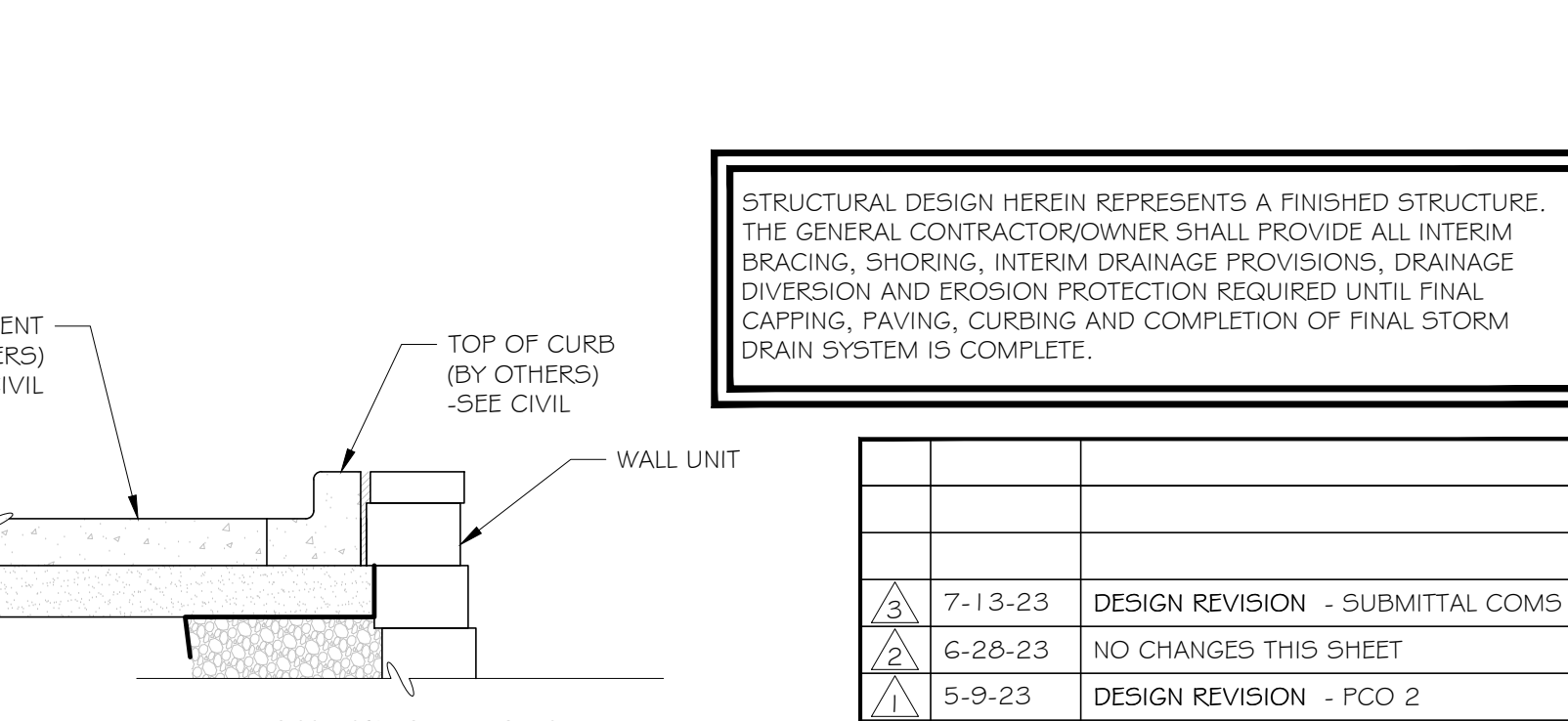


2 TYPICAL SECTION - COMPACTED ROCK
D1 NTS

3 TYPICAL POST AT UNREINFORCED WALL
D1 NTS



4 TYPICAL POST AT REINFORCED WALL
D1 NTS



STRUCTURAL DESIGN HEREIN REPRESENTS A FINISHED STRUCTURE. THE GENERAL CONTRACTOR/OWNER SHALL PROVIDE ALL INTERIM BRACING, SHORING, INTERIM DRAINAGE PROVISIONS, DRAINAGE DIVERSION AND EROSION PROTECTION REQUIRED UNTIL FINAL CAPPING, PAVING, CURBING AND COMPLETION OF FINAL STORM DRAIN SYSTEM IS COMPLETE.

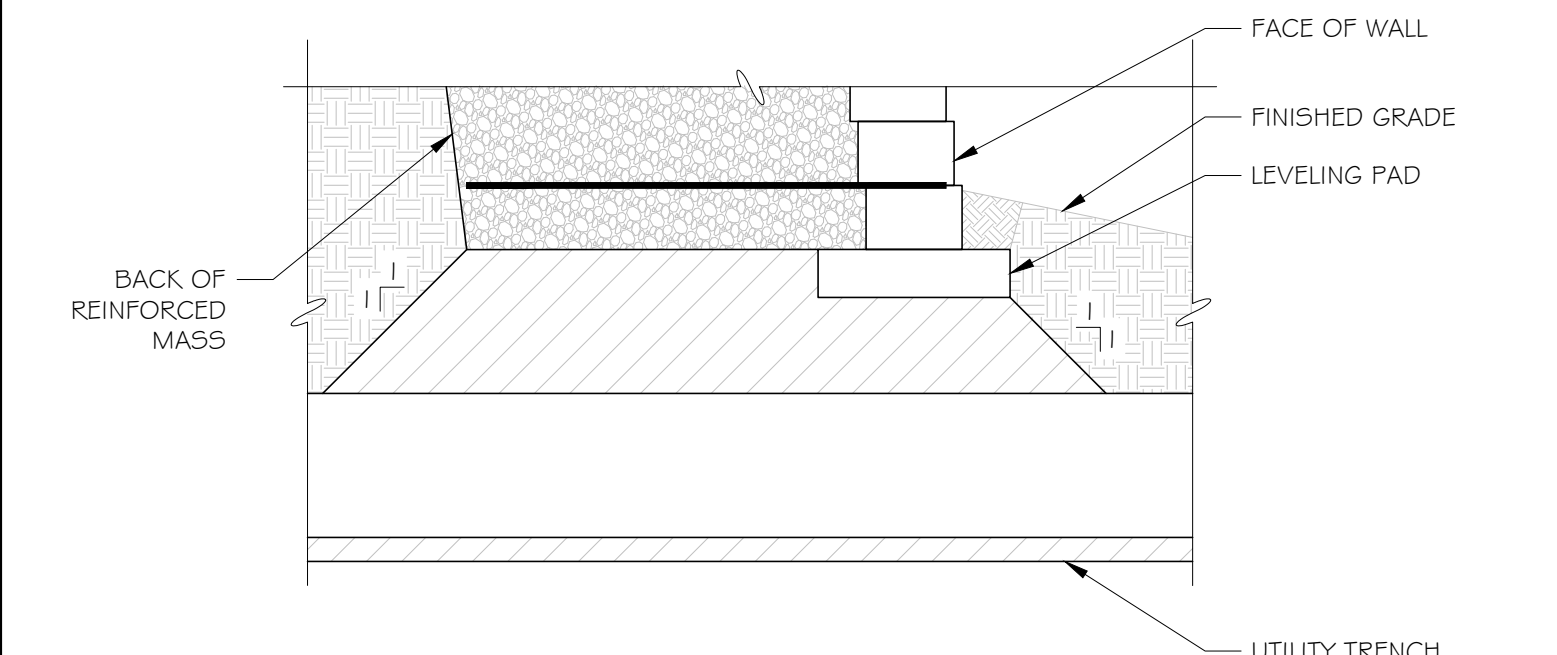
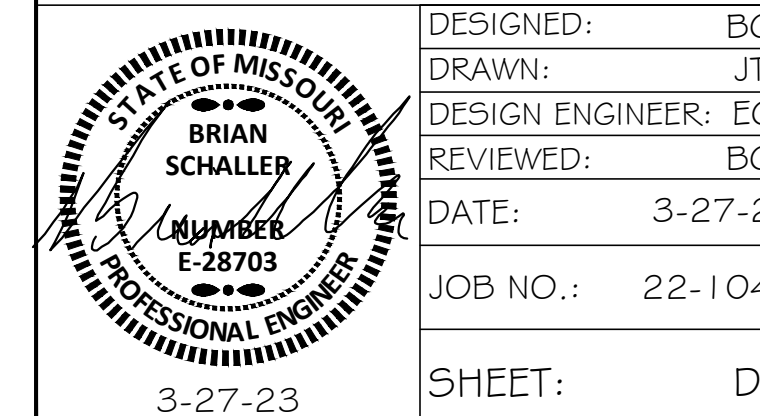
REV	DATE	DESCRIPTION
3	7-13-23	DESIGN REVISION - SUBMITTAL COMS
2	6-28-23	NO CHANGES THIS SHEET
1	5-9-23	DESIGN REVISION - PCO 2

ROSCH ENGINEERING
18390 WINGS CORPORATE DRIVE
CHESTERFIELD, MO 63005
PHONE: 636-519-7770
FAX: 636-532-7773

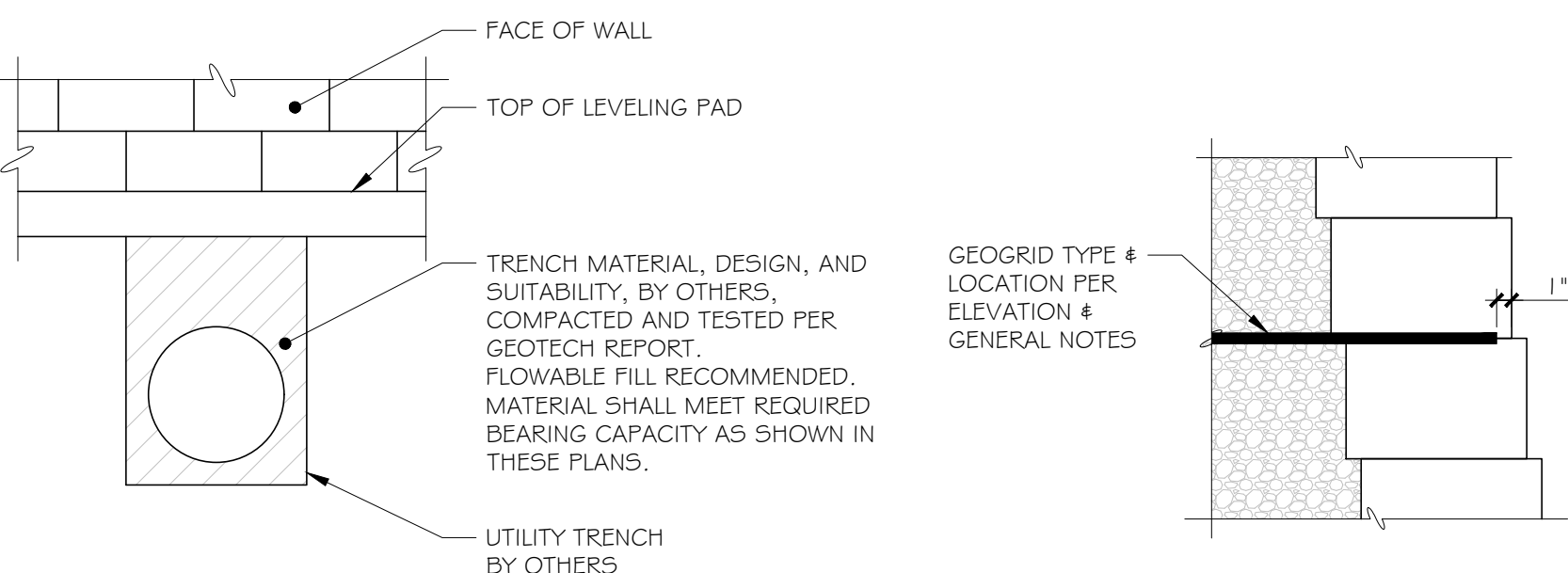
NO. CERTIFICATE OF AUTHORITY #E-2012039653

DOLLAR GENERAL
O'FALLON, MO
RETAINING WALL
NOTES & DETAILS

DESIGNED:	BCS
DRAWN:	JTM
DESIGN ENGINEER:	ECS
REVIEWED:	BCS
DATE:	3-27-23
JOB NO.:	22-1048
SHEET:	D1

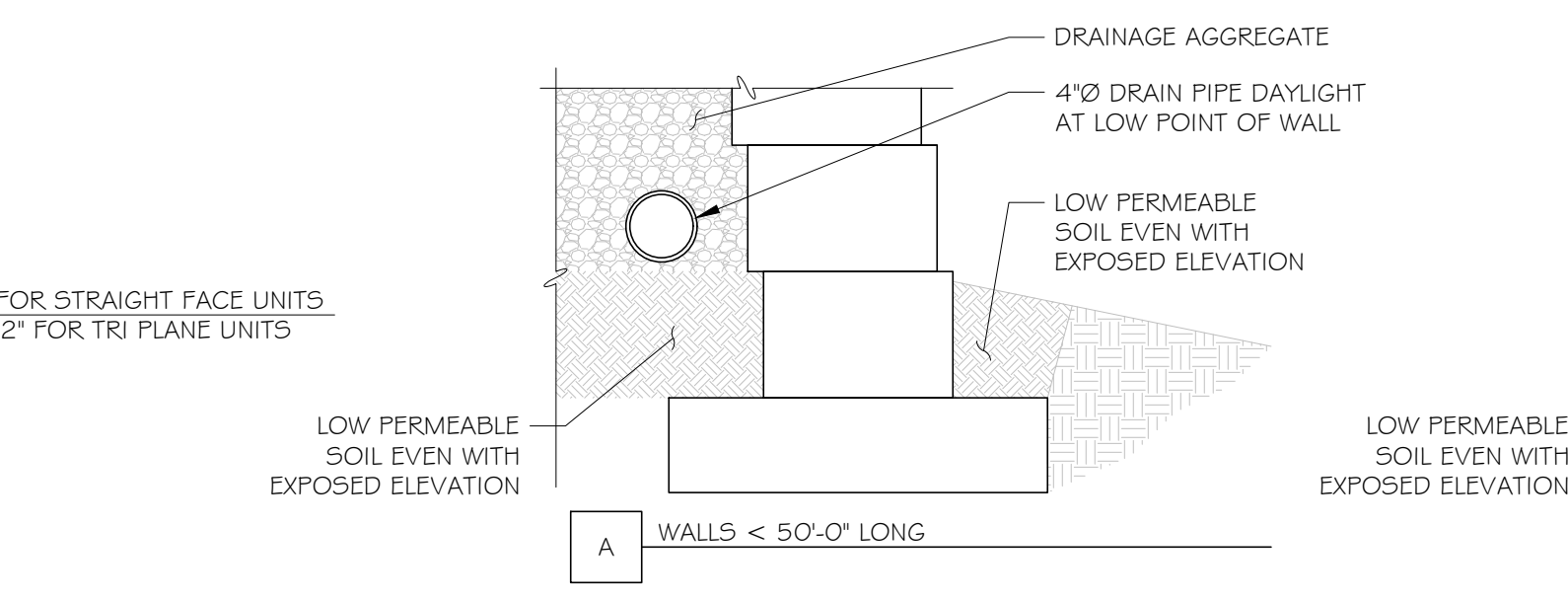


7 UTILITY TRENCH CROSSING DETAIL
D1 NTS

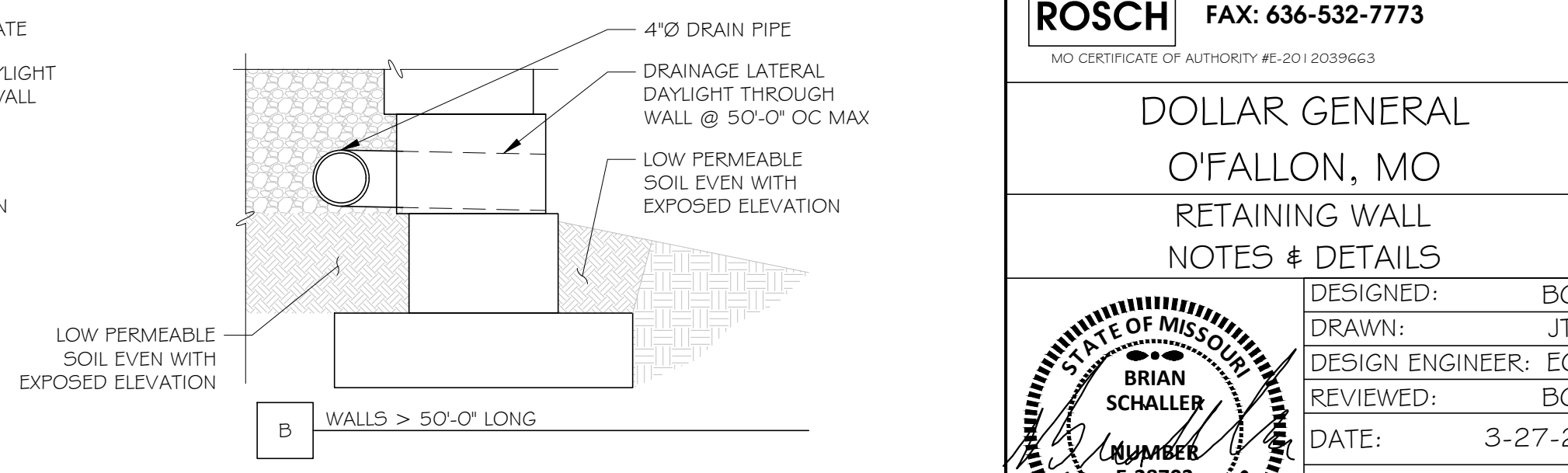


8 GEOGRID PLACEMENT
D1 NOT TO SCALE

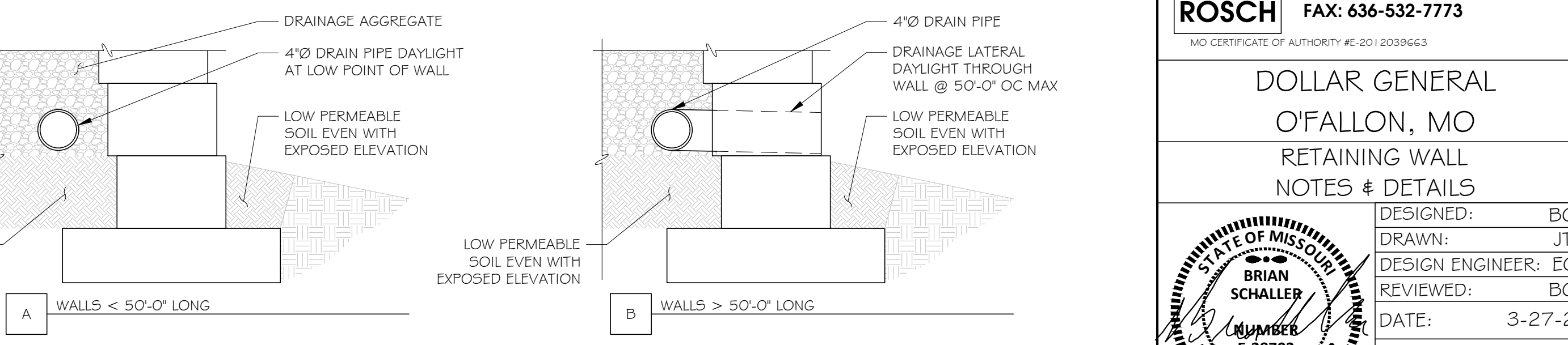
5 TYPICAL OUTSIDE CORNER DETAIL
D1 NTS



6 TYPICAL CURB AT TOP OF WALL
D1 NTS



9 DRAIN PIPE INSTALLATION
D1 NOT TO SCALE



THESE PLANS ARE FOR THE EXCLUSIVE USE OF ROSCH CONSTRUCTION. USE OF THESE PLANS BY ANY OTHER ENTITY TO CONSTRUCT THE SUBJECT STRUCTURES WILL RENDER THE ENGINEERING SEAL SHOWN NULL AND VOID.