

VEGETATION ESTABLISHMENT
For Urban Development Sites
APPENDIX A

SEEDING RATES:

PERMANENT:
Tall Fescue - 30 lbs./ac.
Smooth Brome - 20 lbs./ac.
Combined Fescue & Brome @ 15 lbs./ac. AND Brome @ 10 lbs./ac.

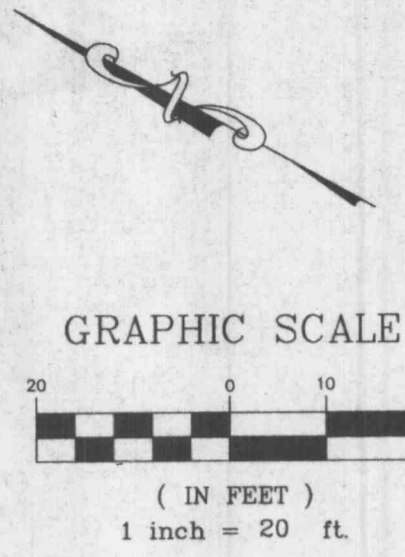
TEMPORARY:
Wheat or Rye - 150 lbs./ac. (3.5 lbs. per sq. ft.)
Oats - 120 lbs./ac. (2.75 lbs. per sq. ft.)

SEEDING PERIODS:
Fescue or Brome - March 1 to June 1
August 1 to October 1
Wheat or Rye - March 15 to November 1
Oats - March 15 to September 15

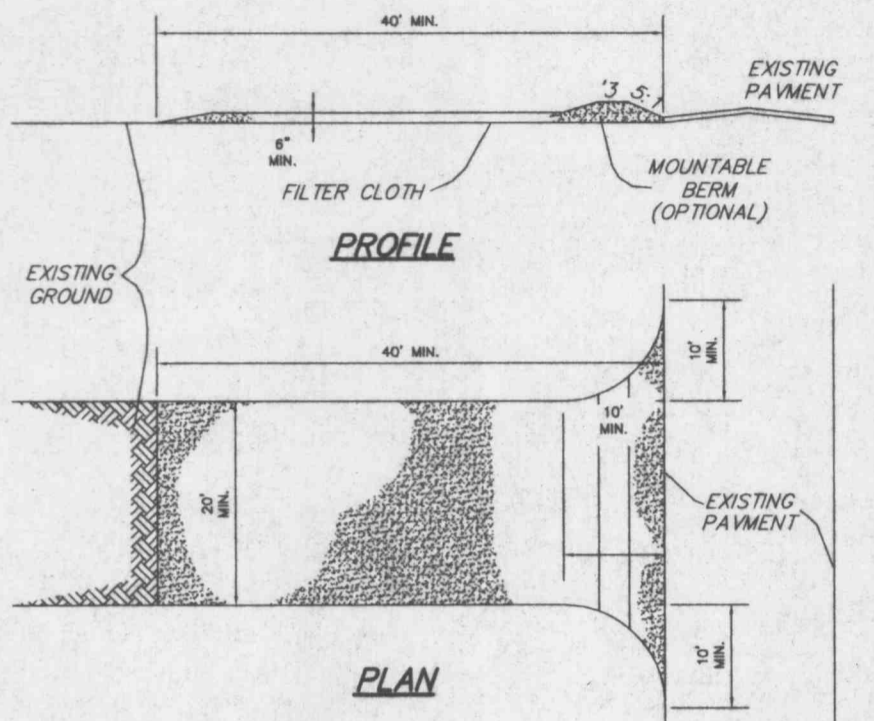
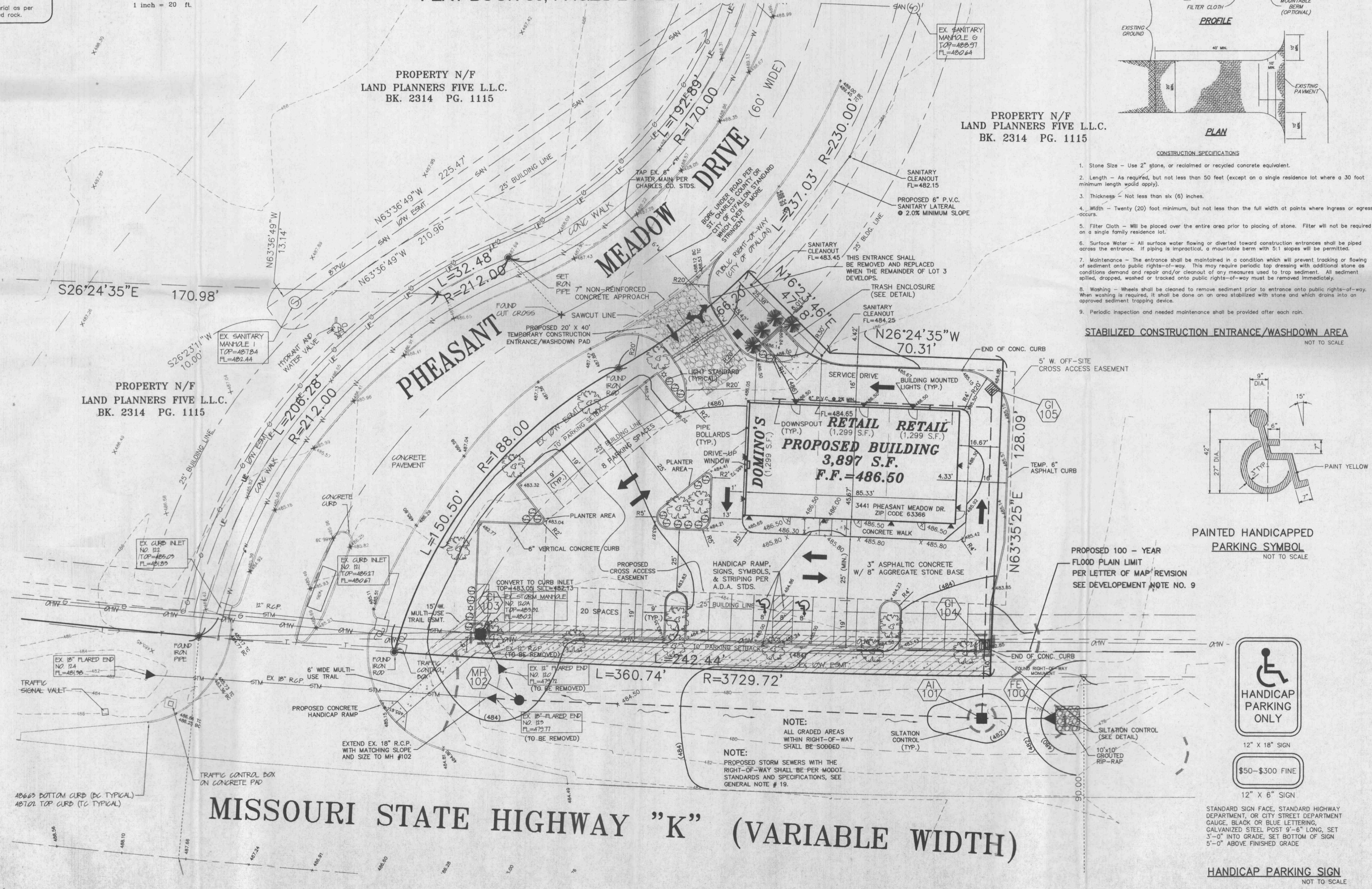
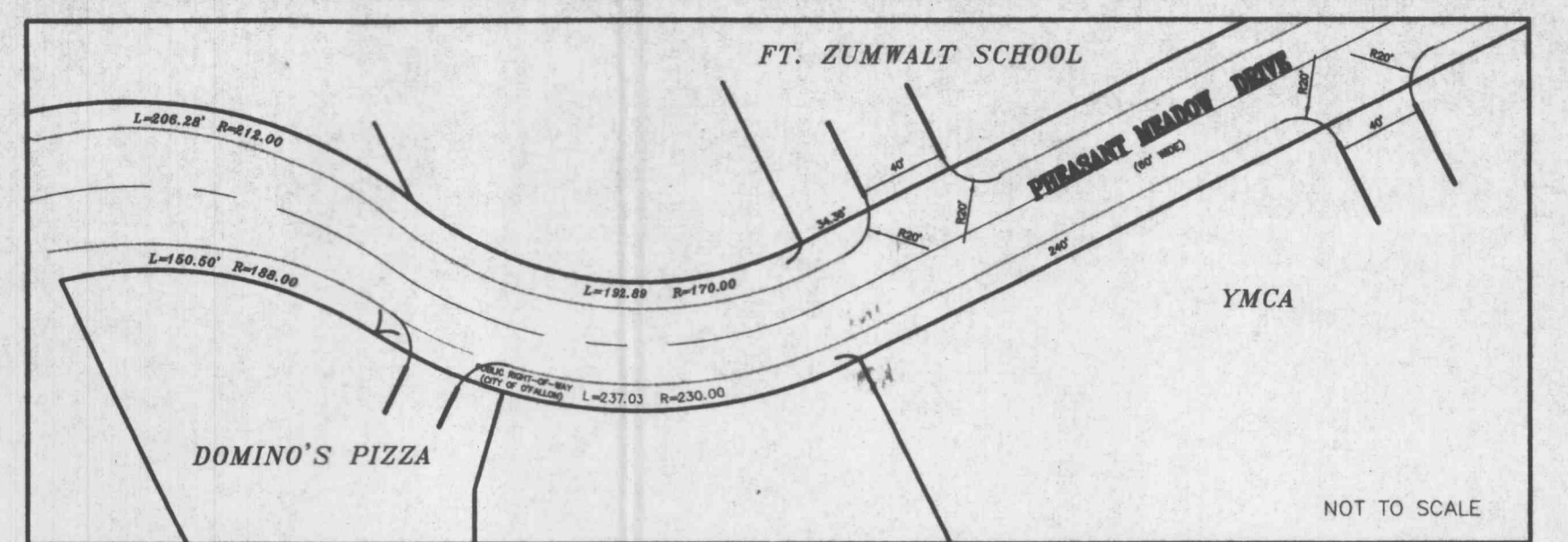
MULCH RATES:
100 lbs. per 1000 sq. ft. (4,356 lbs. per ac.)

FERTILIZER RATES:
Nitrogen 30 lbs./ac.
Phosphate 30 lbs./ac.
Potassium 30 lbs./ac.
Lime 600 lbs./ac. ENM*

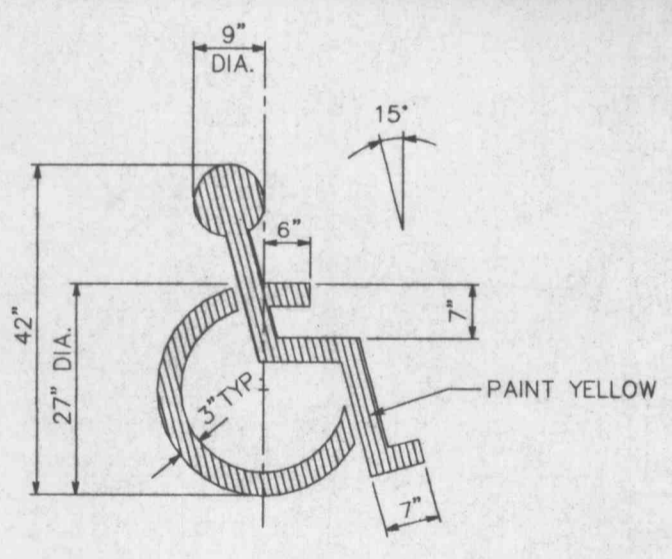
* ENM = effective neutralizing material as per State evaluation of quarried rock.



A SITE/GRADING PLAN FOR
DOMINO'S PIZZA
LOT 3A OF PHEASANT POINT CENTER
A TRACT OF LAND BEING PART OF
TRACT 2, LOT 3 OF "PHEASANT POINT CENTER",
IN U.S. SURVEY 1696, TOWNSHIP 46 NORTH, RANGE 3 EAST
OF THE FIFTH PRINCIPAL MERIDIAN,
ST. CHARLES COUNTY, MISSOURI
PLAT BOOK 35, PAGES 248-249



- CONSTRUCTION SPECIFICATIONS**
- Stone Size - Use 2" stone, or reclaimed or recycled concrete equivalent.
 - Length - As required, but not less than 50 feet (except on a single residence lot where a 30 foot minimum length would apply).
 - Thickness - Not less than six (6) inches.
 - Width - Twenty (20) foot minimum, but not less than the full width at points where ingress or egress occurs.
 - Filter Cloth - Will be placed over the entire area prior to placing of stone. Filter will not be required on a single family residence lot.
 - Surface Water - All surface water flowing or diverted toward construction entrances shall be piped across the entrance. If piping is impractical, a mountable berm with 5:1 slopes will be permitted.
 - Maintenance - The entrance shall be maintained in a condition which will prevent tracking or flowing of sediment onto public rights-of-way. This may require periodic top dressing with additional stone as conditions demand and repair and/or cleanout of any measures used to trap sediment. All sediment applied, dropped, washed or tracked onto public rights-of-way must be removed immediately.
 - Washing - Wheels shall be cleaned to remove sediment prior to entrance onto public rights-of-way. When washing is required, it shall be done on an area stabilized with stone and which drains into an approved sediment trapping device.
 - Periodic inspection and needed maintenance shall be provided after each rain.
- STABILIZED CONSTRUCTION ENTRANCE/WASHDOWN AREA**
NOT TO SCALE



PAINTED HANDICAPPED PARKING SYMBOL
NOT TO SCALE



12" X 18" SIGN

STANDARD SIGN FACE, STANDARD HIGHWAY DEPARTMENT, OR CITY STREET DEPARTMENT GAUGE, BLACK OR BLUE LETTERING, GALVANIZED STEEL POST 9'-6" LONG, SET 3'-0" INTO GRADE, SET BOTTOM OF SIGN 5'-0" ABOVE FINISHED GRADE

HANDICAP PARKING SIGN
NOT TO SCALE

PREPARED FOR:
MBR HIGHWAY K PROPERTY, L.L.C.
201 N. MAIN STREET, SUITE 300
ST. CHARLES, MO 63301

DISCLAIMER OF RESPONSIBILITY
I hereby certify that the documents to be authorized by my seal and this sheet, and I hereby disclaim liability for all other drawings, specifications, reports or other documents relating to or intended for any part or parts of the engineering project or survey.

Copyright 1998
Bee Engineering Company
All Rights Reserved

REVISIONS

12-18-00	CITY COMME
1-23-01	CITY COMME
3-09-01	MODOT COM
5-22-01	MODOT COM

ENGINEERING PLANNING SURVEYING

1052 South Cloverleaf
St. Peters, MO. 63373
314-928-5552
FAX 928-1718

11-1-00
DATE
95-7218H
PROJECT NUMBER
2 OF 4
SHEET OF
7218HCON.DWG
FILE NAME
ALJ CLP
DRAWN CHECK

E:\Qms\0008\US\7218H-Domino's Pizza\Construction\7218Hcon.dwg P1: Jun 22 15:48:51 2001 STATION 11 SCOTT L.