

A DRAINAGE AREA MAP FOR
DOMINO'S PIZZA
LOT 3A OF PHEASANT POINT CENTER
 A TRACT OF LAND BEING PART OF
 TRACT 2, LOT 3 OF "PHEASANT POINT CENTER",
 IN U.S. SURVEY 1696, TOWNSHIP 46 NORTH, RANGE 3 EAST
 OF THE FIFTH PRINCIPAL MERIDIAN,
 ST. CHARLES COUNTY, MISSOURI
 PLAT BOOK 35, PAGES 248-249

VEGETATION ESTABLISHMENT
 For Urban Development Sites
APPENDIX A

SEEDING RATES:

PERMANENT:
 Tall Fescue - 30 lbs./ac.
 Smooth Brome - 20 lbs./ac.
 Combined - Fescue @ 15 lbs./ac. AND Brome @ 10 lbs./ac.

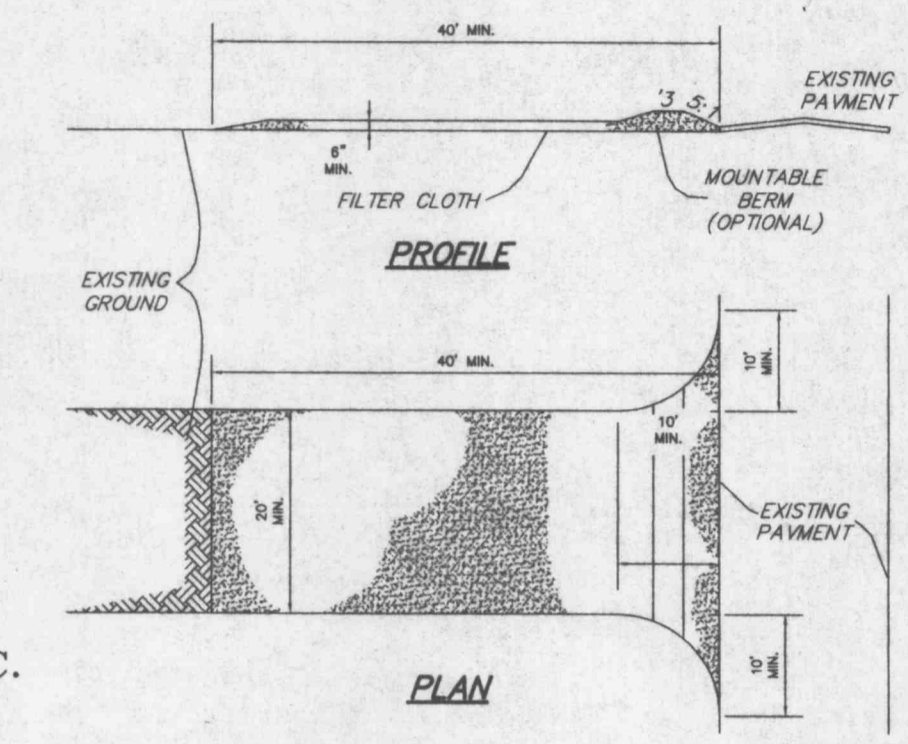
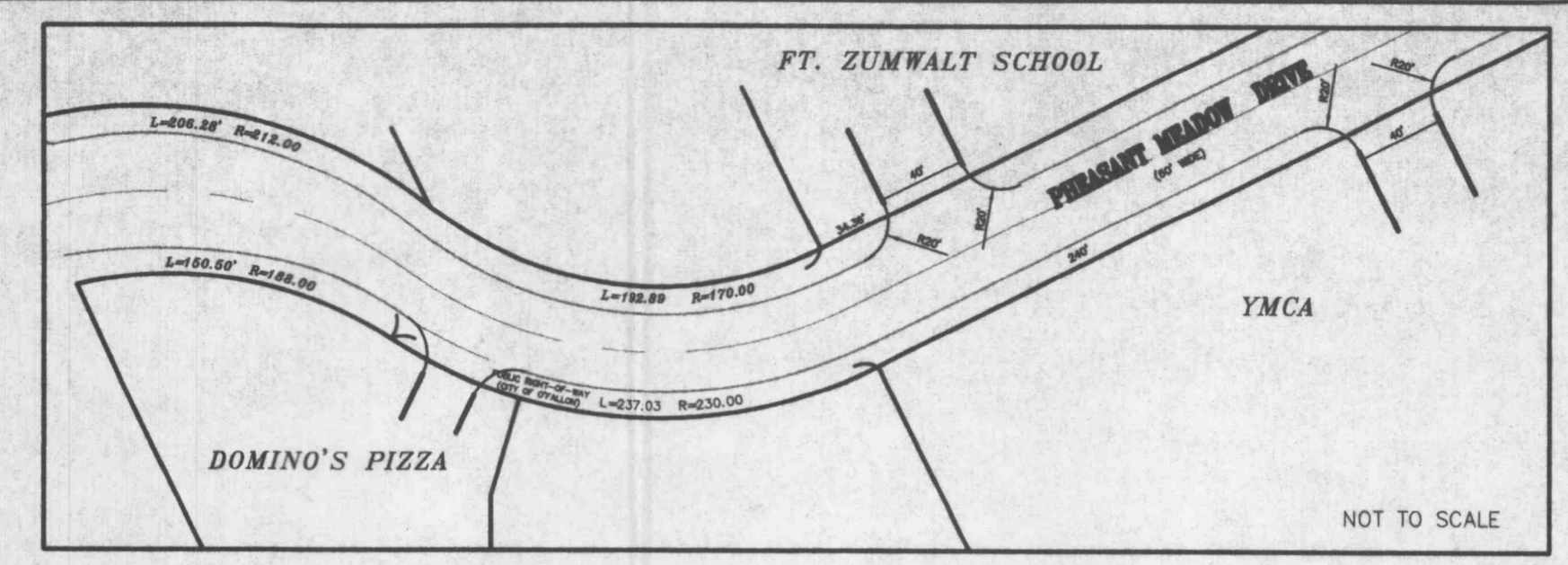
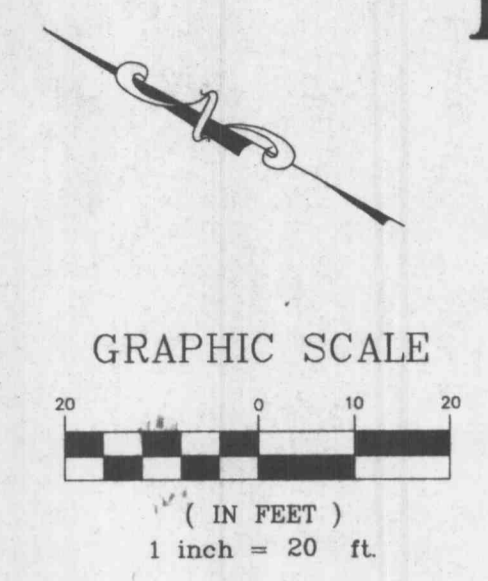
TEMPORARY:
 Wheat or Rye - 150 lbs./ac. (3.5 lbs. per sq. ft.)
 Oats - 120 lbs./ac. (2.75 lbs. per sq. ft.)

SEEDING PERIODS:
 Fescue or Brome - March 1 to June 1
 August 1 to October 1
 Wheat or Rye - March 15 to November 1
 Oats - March 15 to September 15

MULCH RATES:
 100 lbs. per 1000 sq. ft. (4,356 lbs. per ac.)

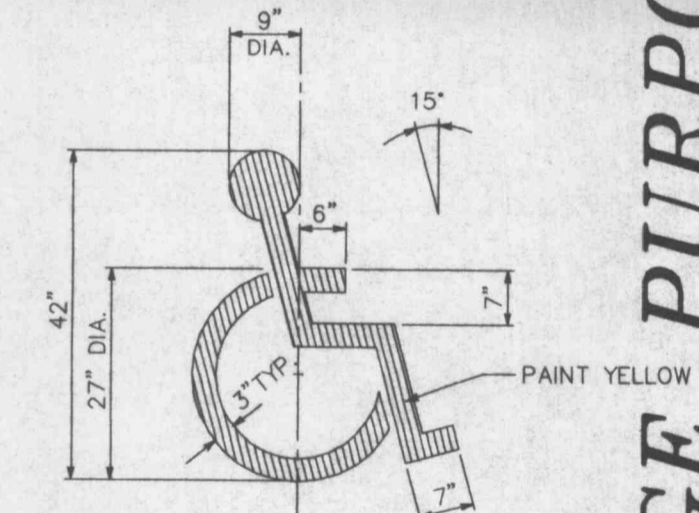
FERTILIZER RATES:
 Nitrogen 30 lbs./ac.
 Phosphate 30 lbs./ac.
 Potassium 30 lbs./ac.
 Lime 600 lbs./ac. ENM*

* ENM = effective neutralizing material as per State evaluation of quarried rock.



- CONSTRUCTION SPECIFICATIONS**
- Stone Size - Use 2" stone, or reclaimed or recycled concrete equivalent.
 - Length - As required, but not less than 50 feet (except on a single residence lot where a 30' minimum length would apply).
 - Thickness - Not less than six (6) inches.
 - Width - Twenty (20) foot minimum, but not less than the full width at points where ingress or egress occurs.
 - Filter Cloth - Will be placed over the entire area prior to placing of stone. Filter will not be required on a single family residence lot.
 - Surface Water - All surface water flowing or diverted toward construction entrances shall be placed across the entrance. If piping is impractical, a mountable berm with 5:1 slopes will be permitted.
 - Maintenance - The entrance shall be maintained in a condition which will prevent tracking or flow of sediment onto public rights-of-way. This may require periodic top dressing with additional stone as conditions demand and repair and/or cleanup of any measures used to trap sediment. All sediment spilled, dropped, washed or tracked onto public rights-of-way must be removed immediately.
 - Washing - Wheels shall be cleaned to remove sediment prior to entrance onto public rights-of-way. When washing is required, it shall be done on an area stabilized with stone and which drains into an approved sediment trapping device.
 - Periodic inspection and needed maintenance shall be provided after each rain.

STABILIZED CONSTRUCTION ENTRANCE/WASHDOWN AREA
 NOT TO SCALE



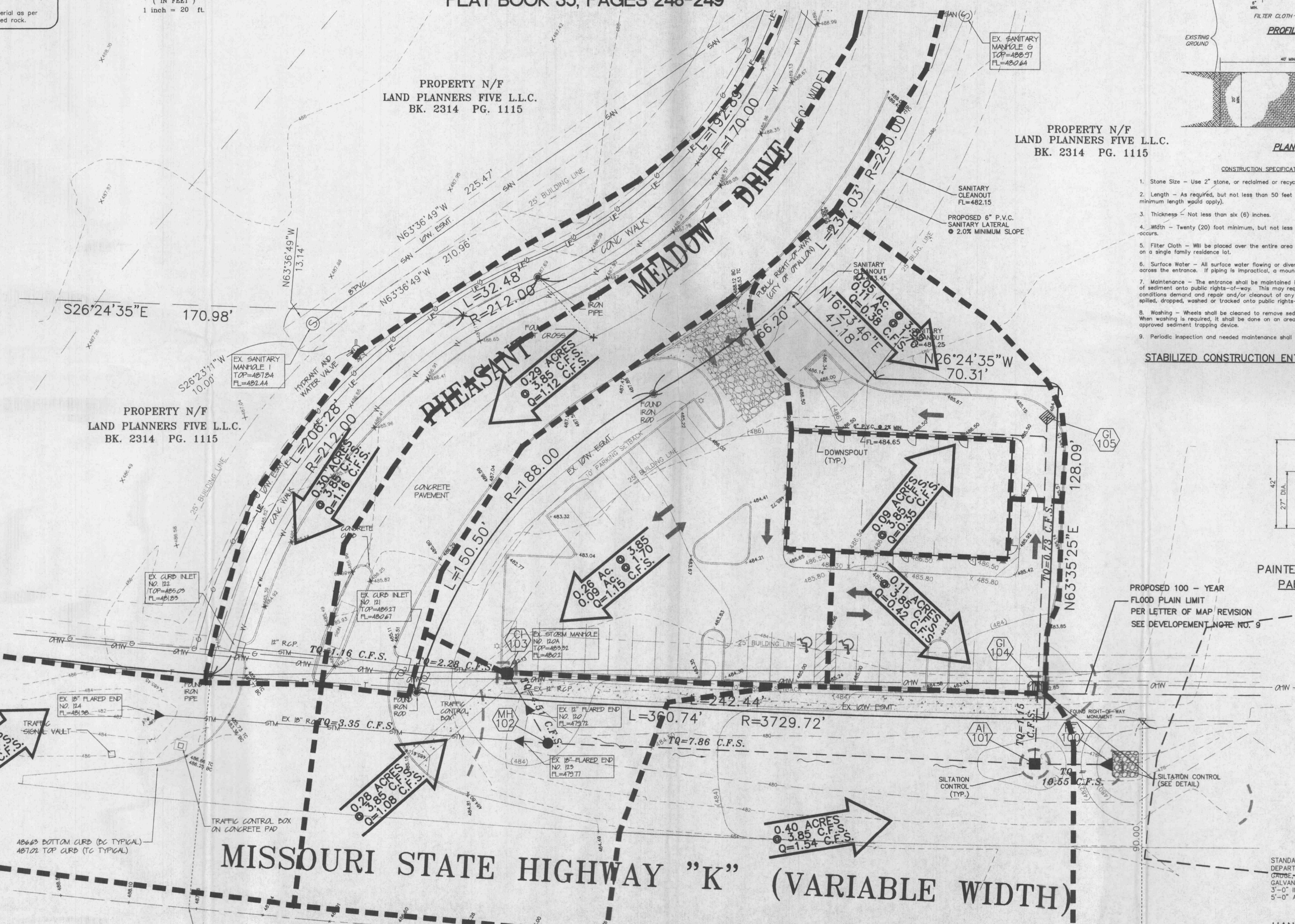
PAINTED HANDICAPPED PARKING SYMBOL
 NOT TO SCALE



HANDICAP PARKING SIGN
 NOT TO SCALE

STANDARD SIGN FACE, STANDARD HIGHWAY DEPARTMENT, OR CITY STREET DEPARTMENT, CRUISE-BLACK OR BLUE LETTERING, GALVANIZED STEEL POST 9'-6" LONG, SET 3'-0" INTO GRADE, SET BOTTOM OF SIGN 5'-0" ABOVE FINISHED GRADE.

HANDICAP PARKING SIGN
 NOT TO SCALE



PREPARED FOR:
MBR HIGHWAY K PROPERTY, L.L.C.
 201 N. MAIN STREET, SUITE 300
 ST. CHARLES, MO 63301
 PHONE: (636) 947-4433 FAX: (636) 947-6917

DISCLAIMER OF RESPONSIBILITY
 I hereby certify that the documents intended to be submitted by my seal are limited to this sheet, and I hereby disclaim any responsibility for all other drawings, specifications, estimates, reports or other documents or instruments relating to or intended to be used for any part or parts of the architectural or engineering project or survey.

REVISIONS

NO.	DATE	REVISION
12-18-00		CITY COMMENTS
1-23-01		CITY COMMENTS
3-09-01		MODOT COMMENTS
5-22-01		MODOT COMMENTS

ENGINEERING PLANNING SURVEYING
 1052 South Cloverleaf Drive
 St. Peters, MO. 63376-6445
 314-928-5552
 FAX 928-1718

11-1-00
 DATE
 95-7218H
 PROJECT NUMBER
 3 OF 4
 SHEET OF
 7218HCON.DWG
 FILE NAME
 ALJ CLH
 DRAWN CHECKED

THIS SHEET FOR DRAINAGE PURPOSES ONLY, NOT FOR CONSTRUCTION!!!

E:\DKG\7000\PLANS\7218H-Domino's Pizza\Construction\7218HCON.dwg Fri, Jun 22 09:22:34 2001 STATION: 11 SCOTT L.