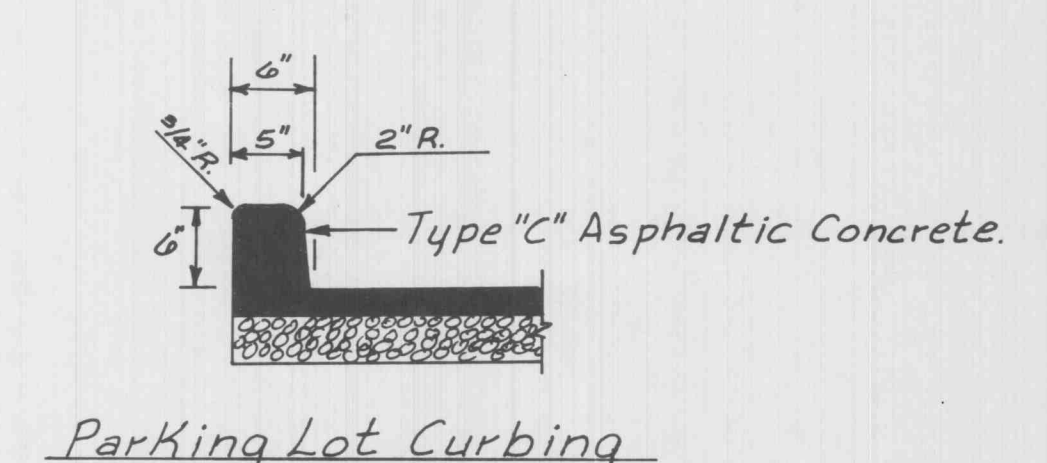
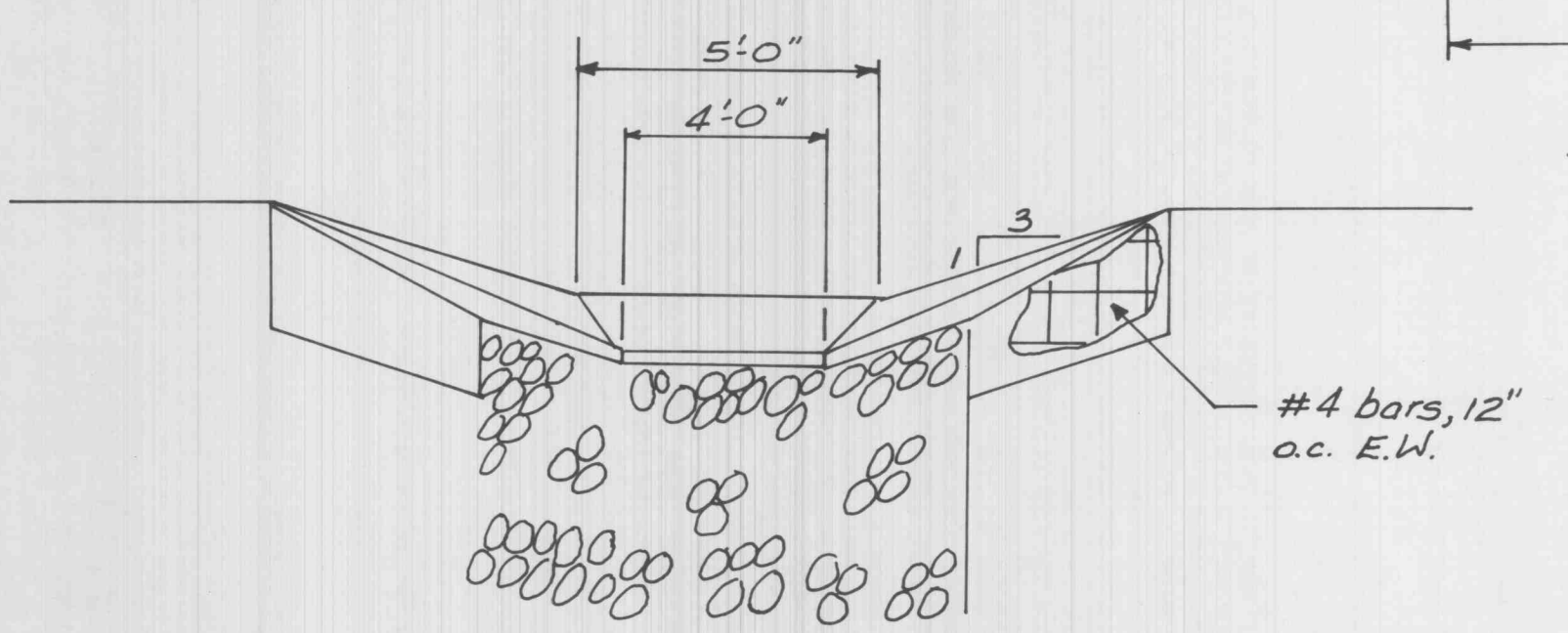
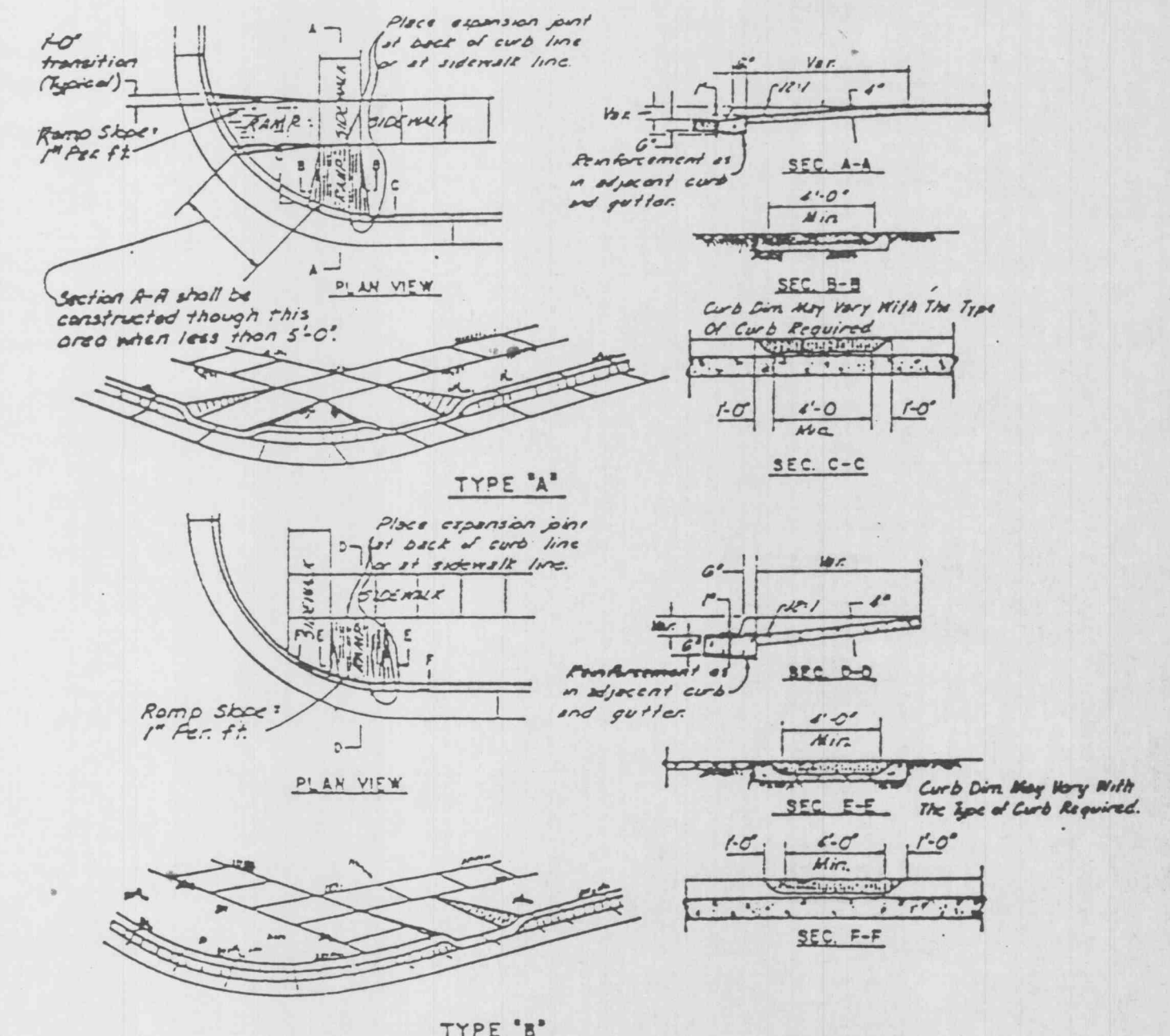
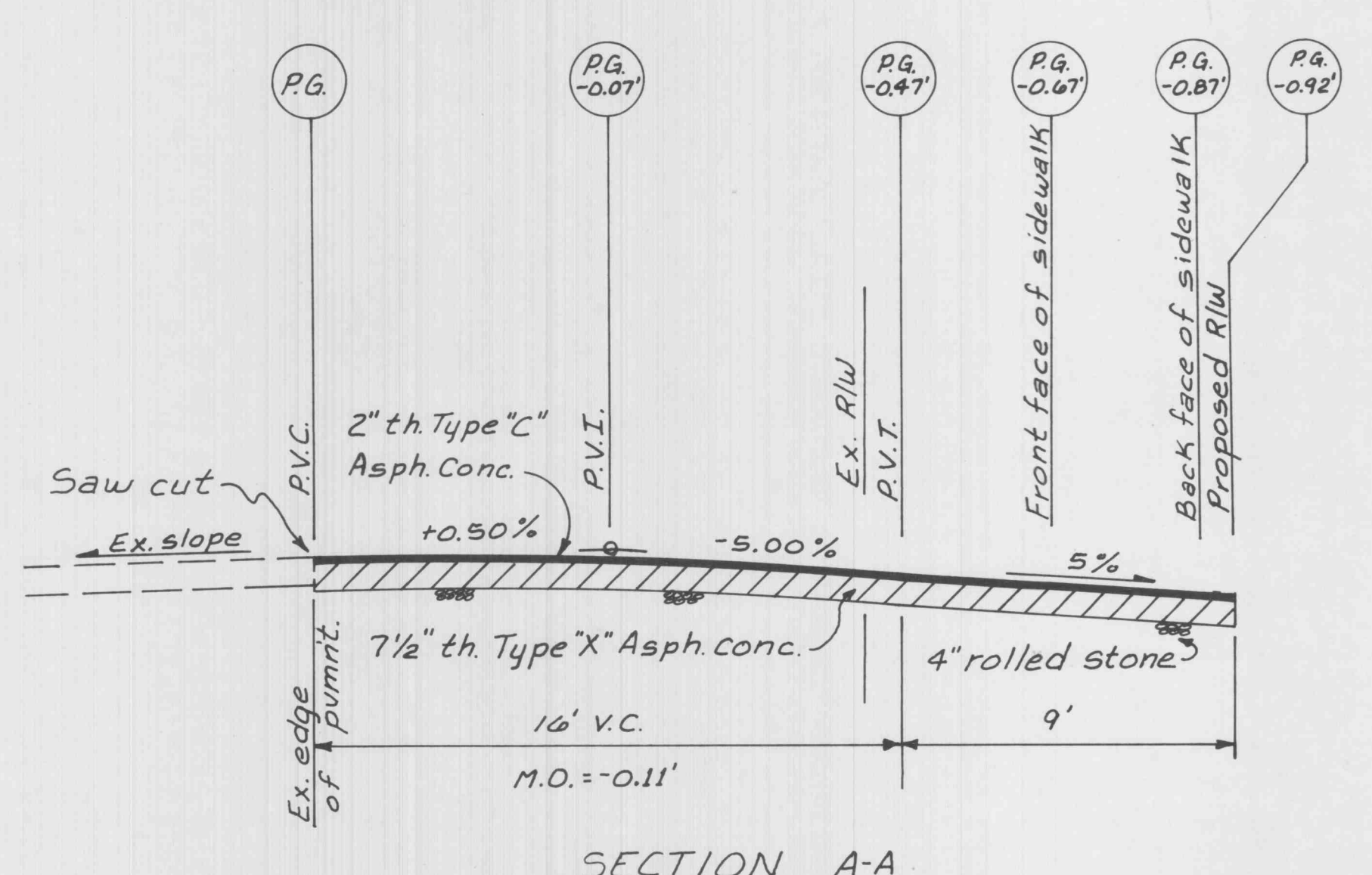
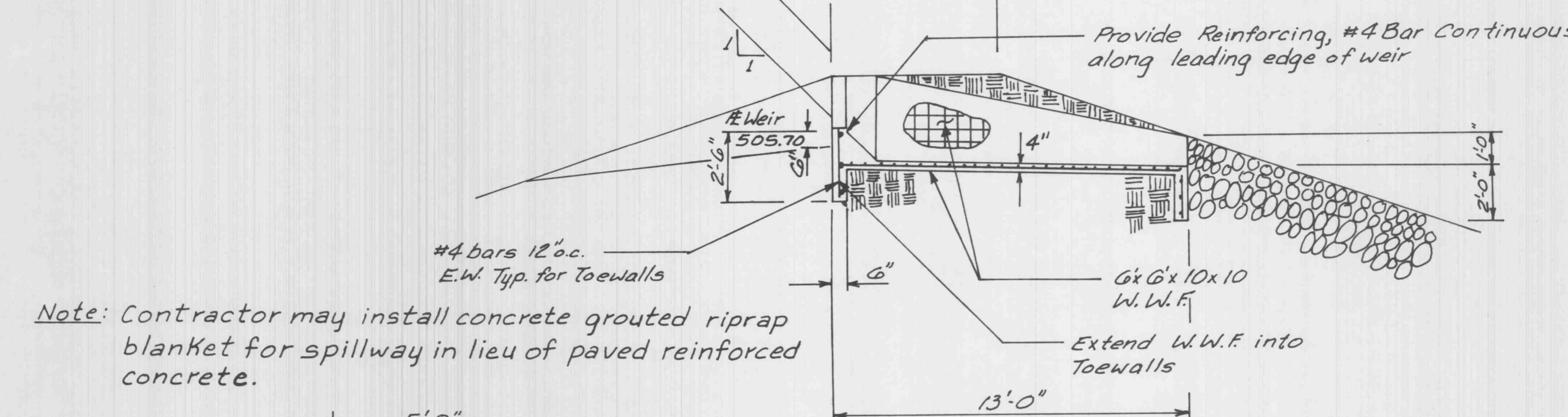
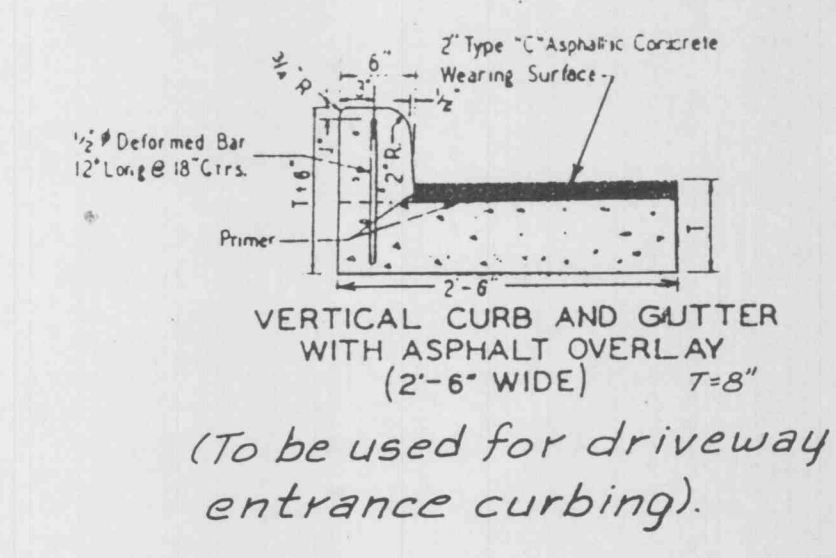
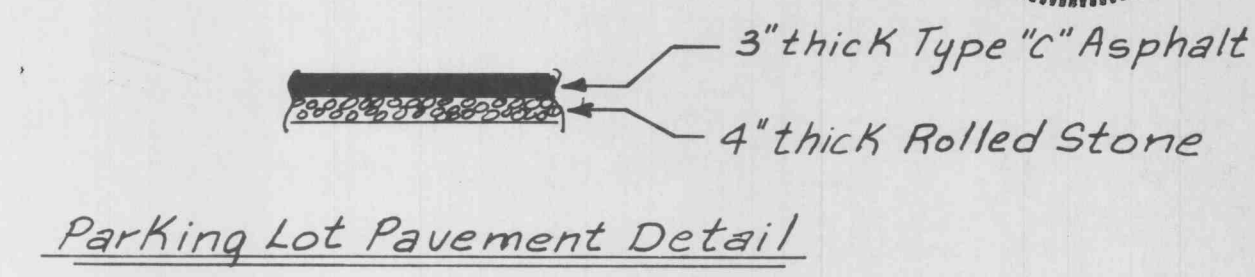
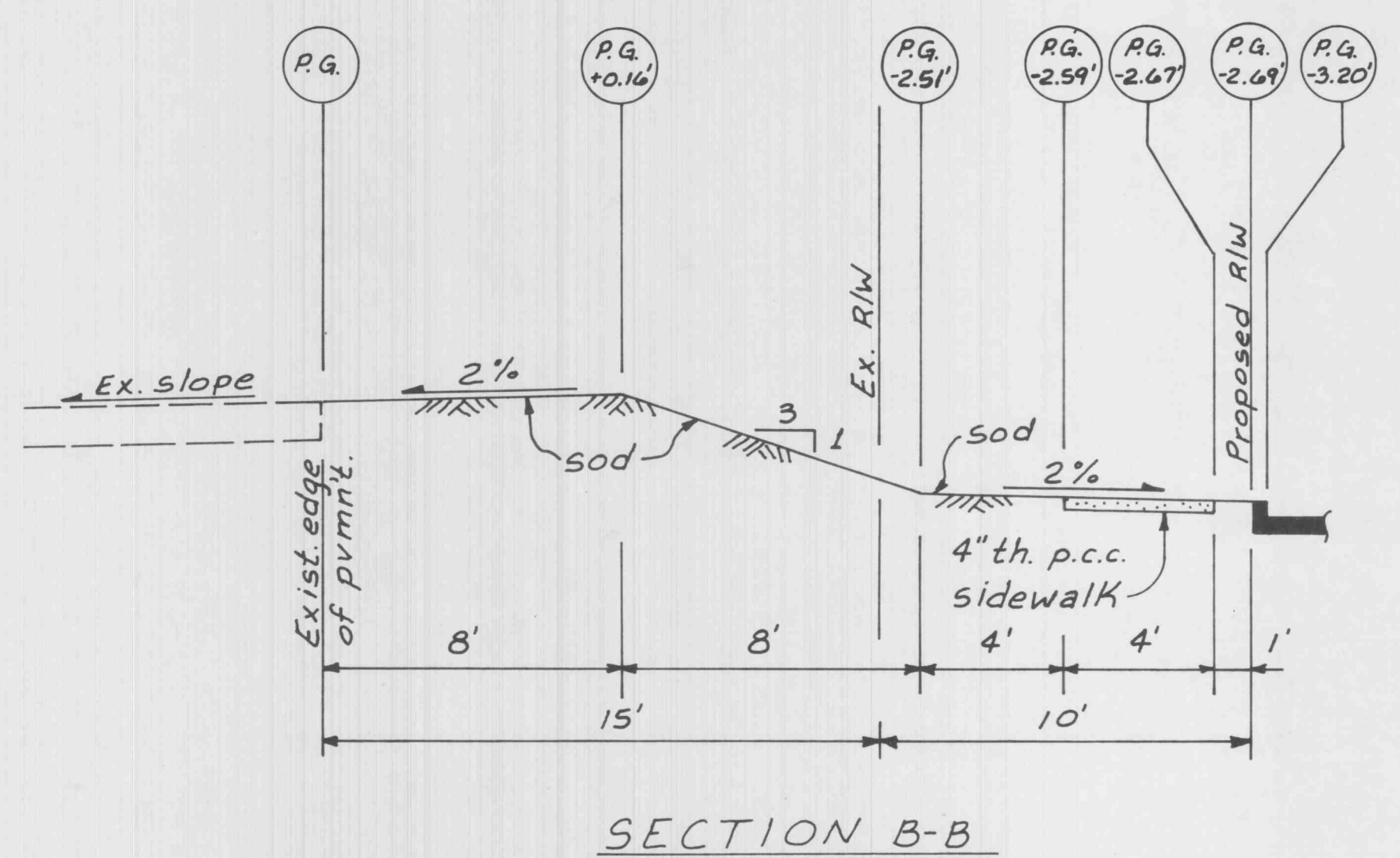
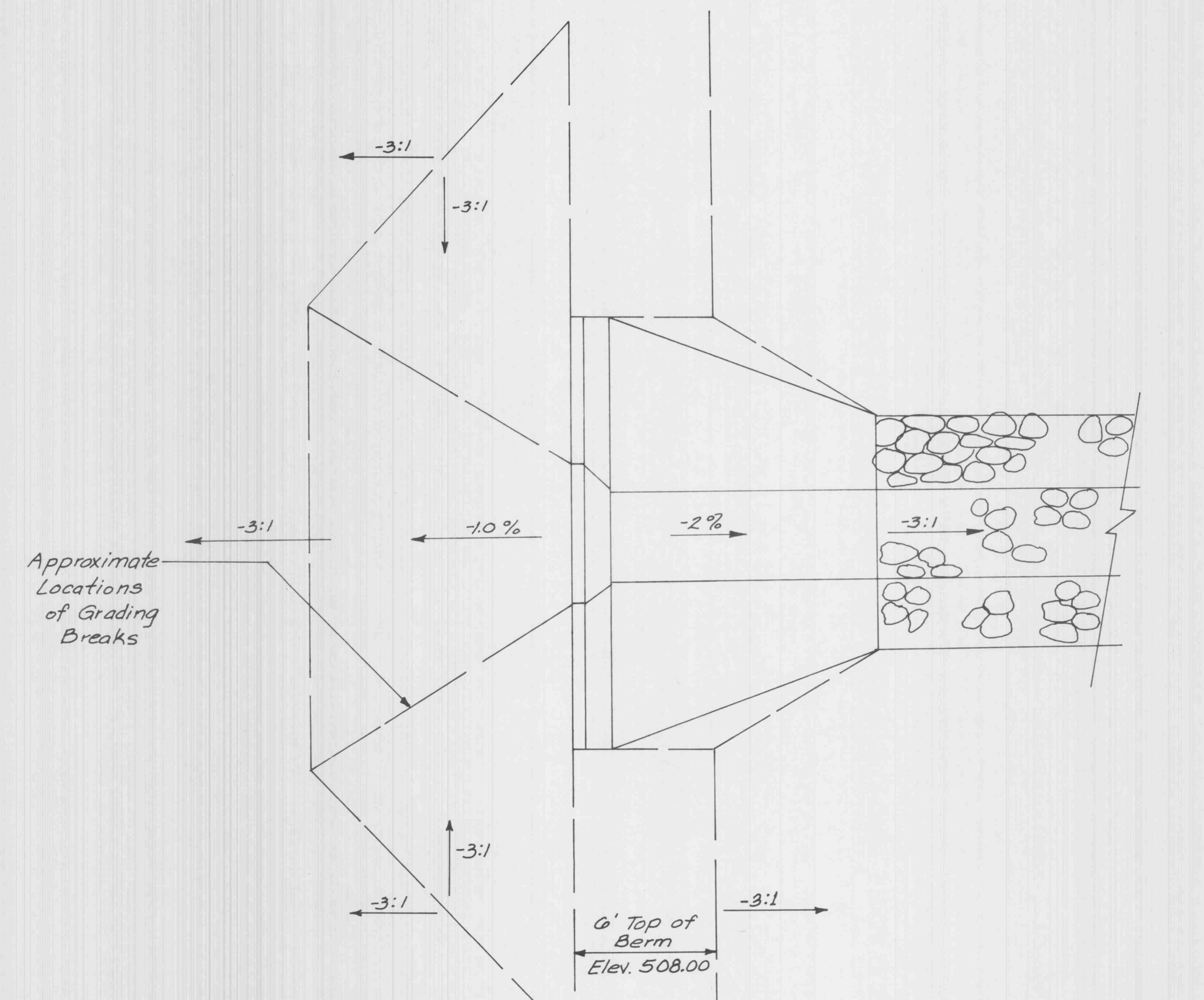


GBA GEORGE BUTLER ASSOCIATES, INC. Engineers / Architects / Landscape Architects / Planners Kansas City, Mo. / Lenexa, Ka. / O'Fallon, Mo. / Ames, Ia. / Oklahoma City, Ok.		DATE: 7-31-87
DESIGN BY: J. Barron		SHEET NO.
DRAWN BY: J. Barron		TOTAL SHEETS
PROJECT NO: 4955		4 6
REVISIONS		BY DATE



Note: Warp sidewalk elevation to match top of driveway entrance curbing in 60 foot distance.

Note: Contractor may install concrete grouted riprap blanket for spillway in lieu of paved reinforced concrete.