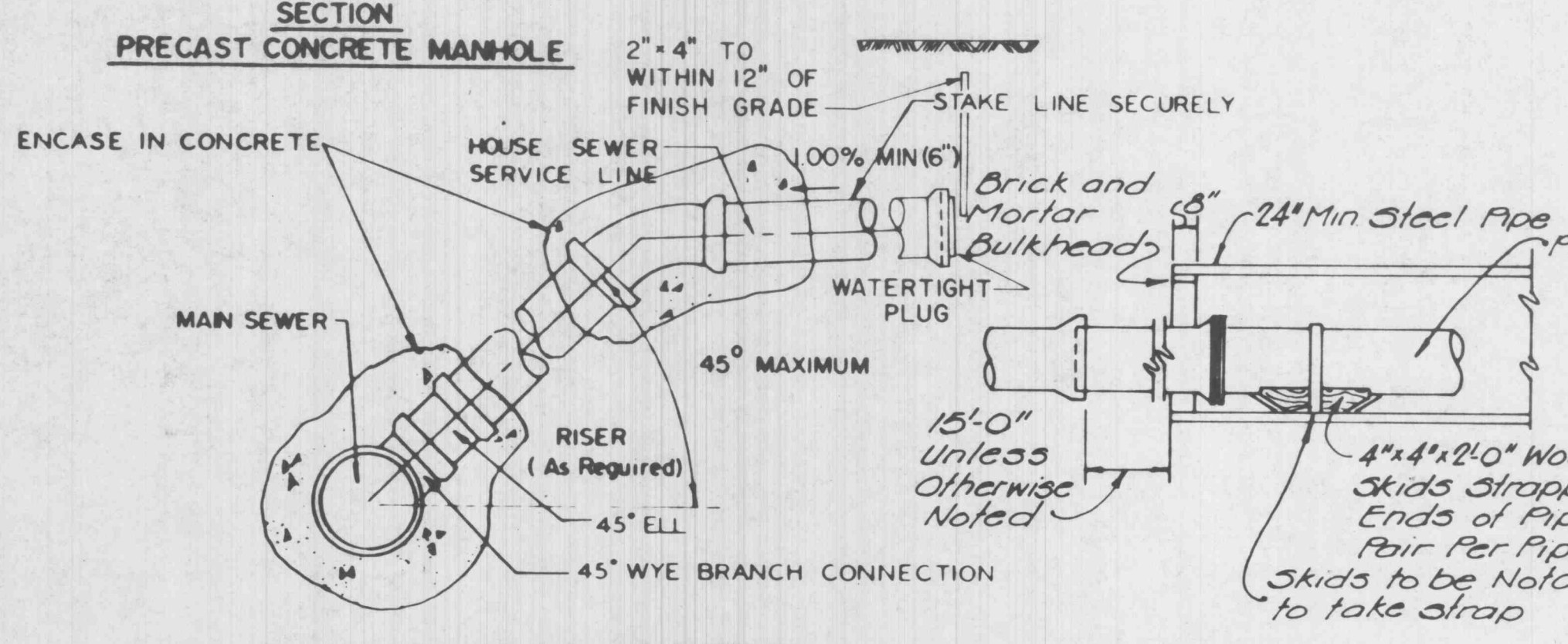
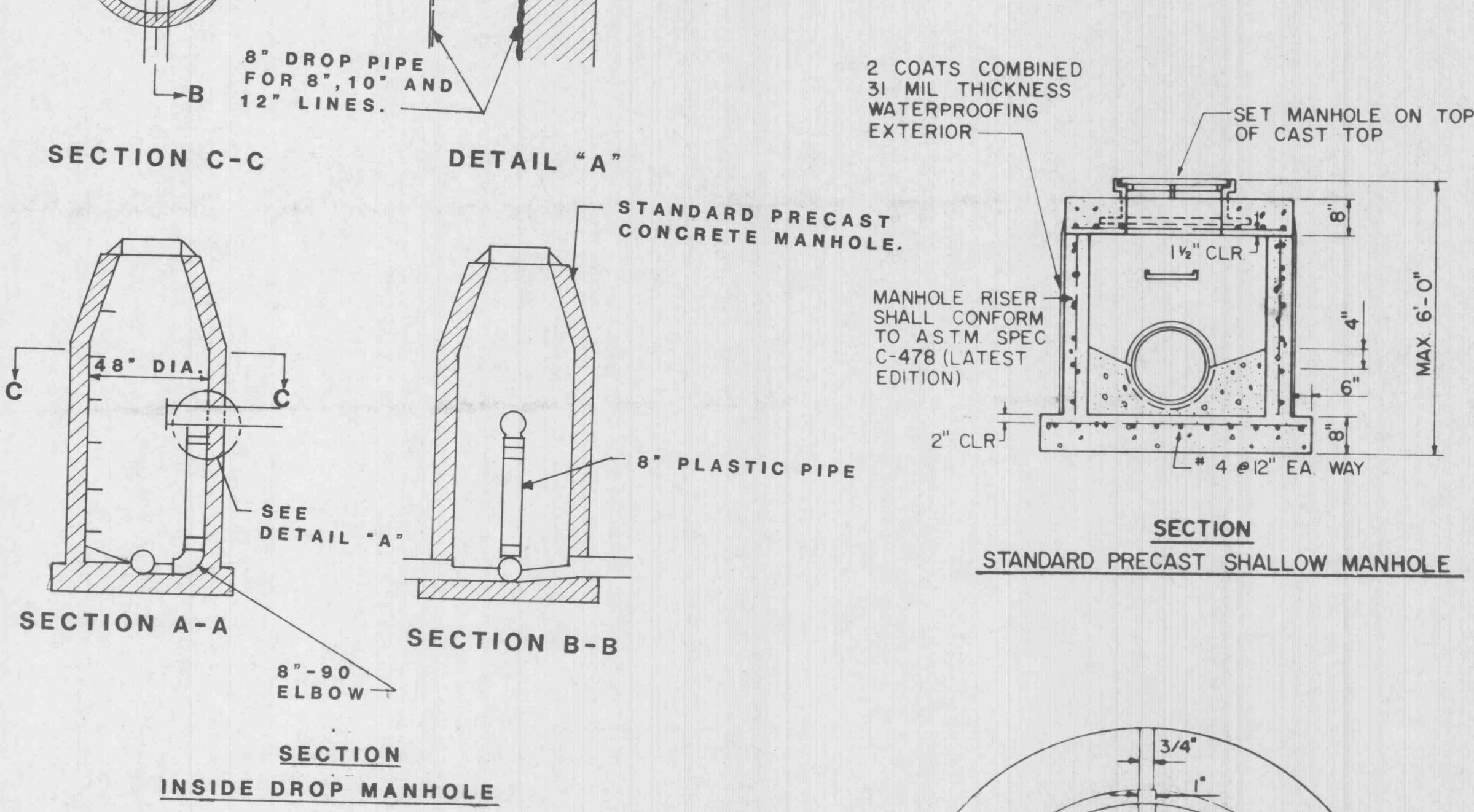
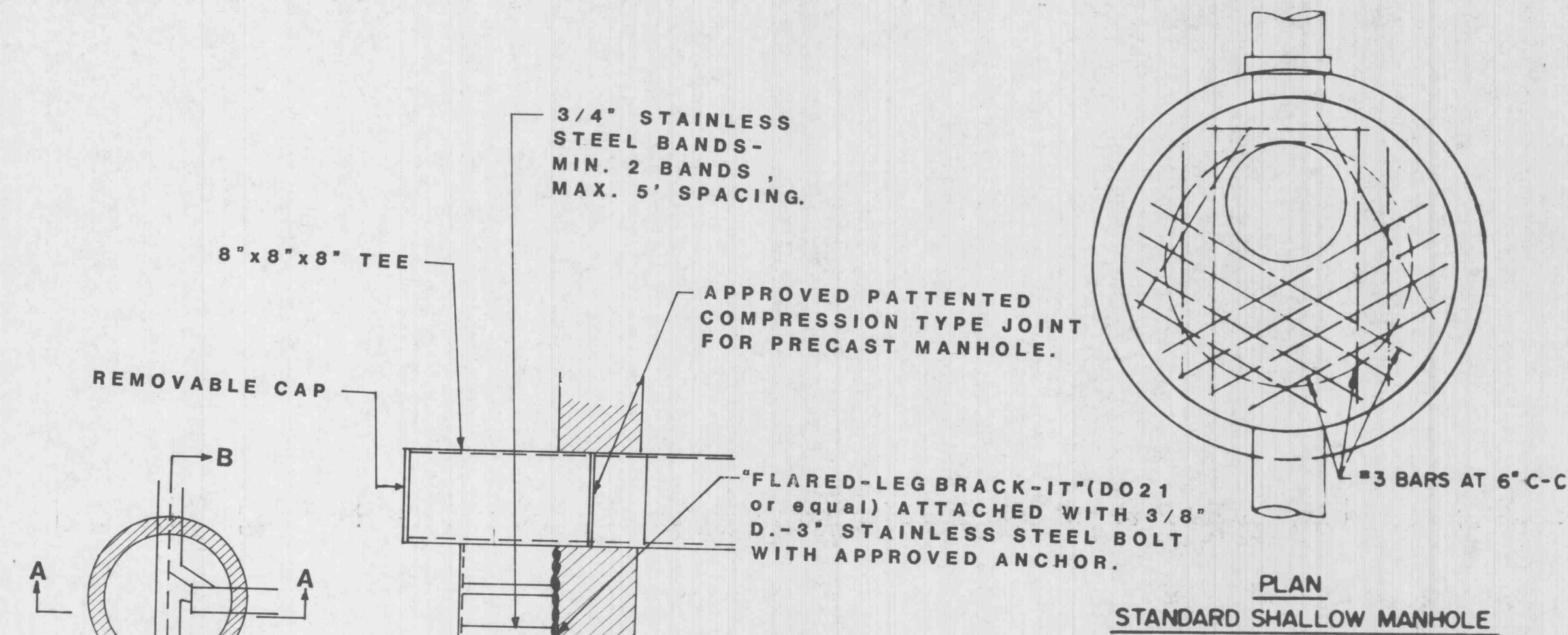
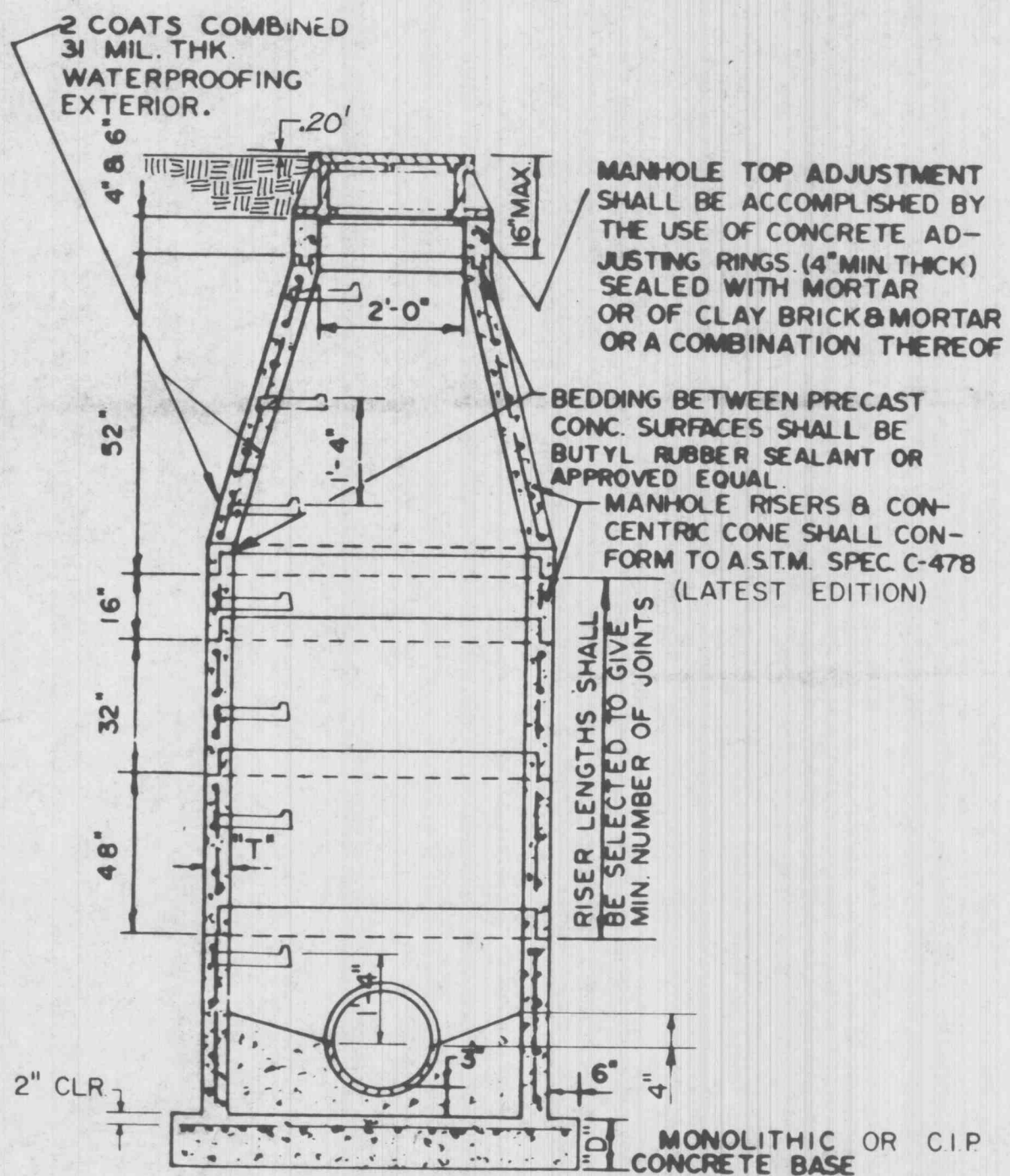
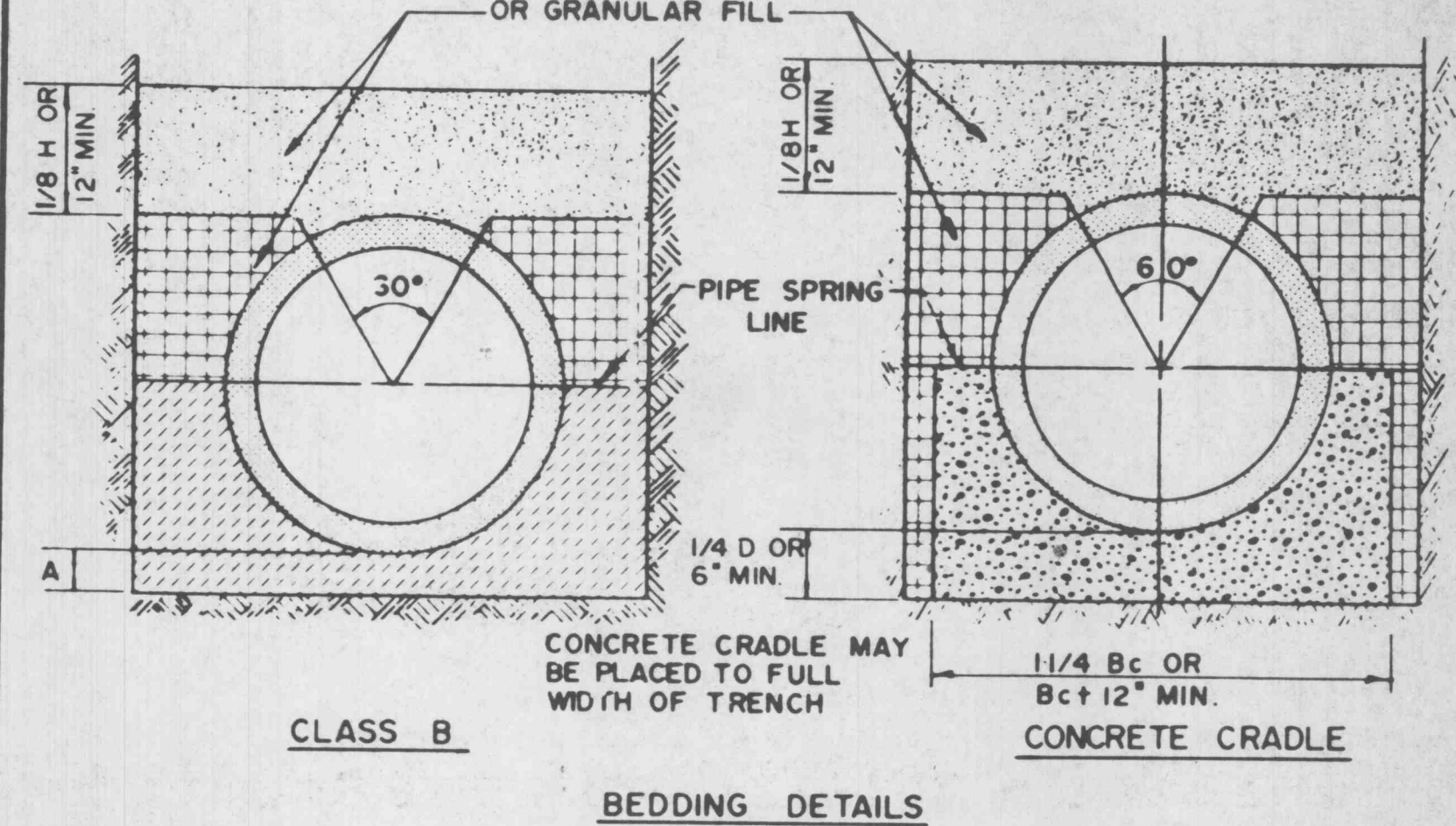
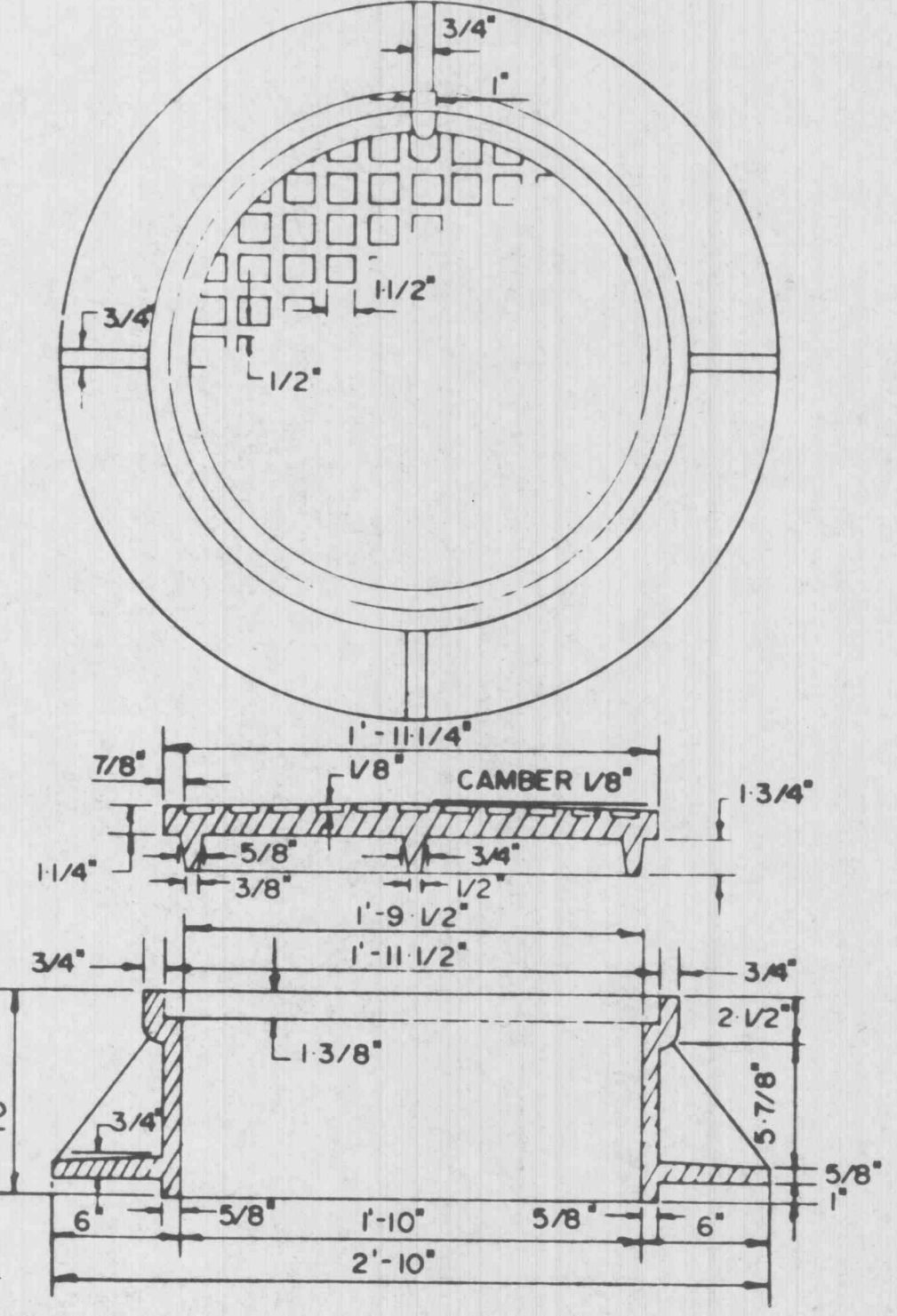
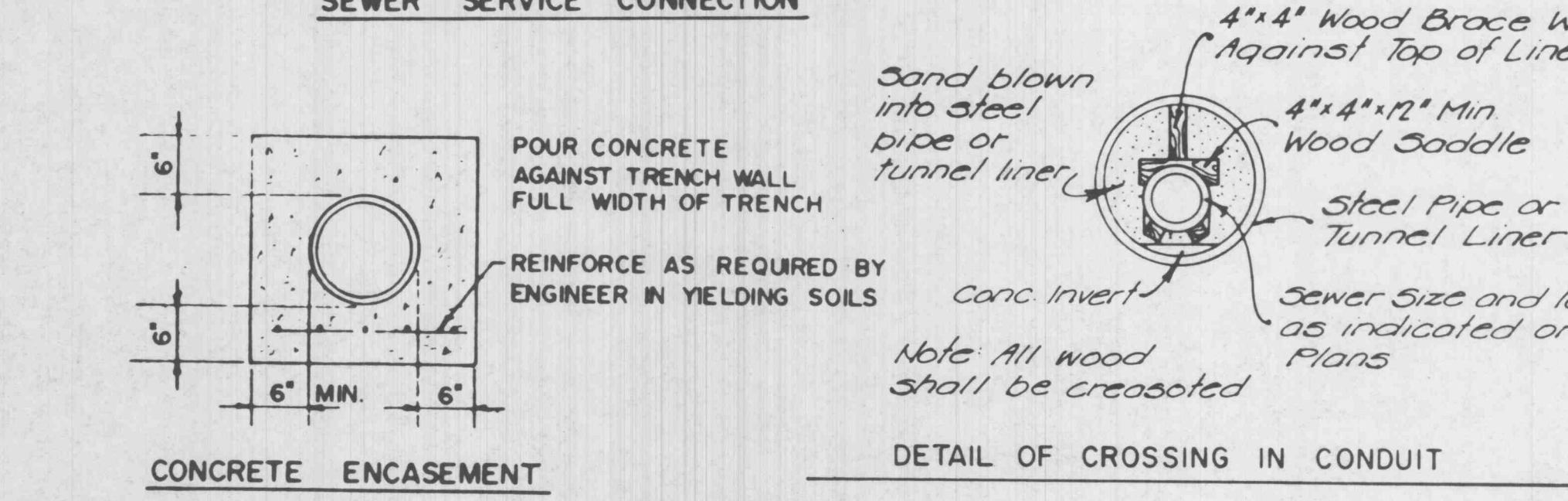


WALL THICKNESS	
DIA. M.H.	"T" DIM PRE CAST
48"	5"
60"	6"
72"	7"

MANHOLE BASE THICKNESS	
DEPTH (FEET)	"D" DIM.
0-20	8" w/ 4 BARS @ 12" CTRS EACH WAY
20-30	8" w/ 4 BARS @ 9" CTRS EACH WAY
30-40	10" w/ 5 BARS @ 10" CTRS EACH WAY



- NOTES:**
1. ANY MATERIAL EXCAVATED BENEATH PIPE ENTERING OR LEAVING MANHOLES SHALL BE REPLACED WITH CONCRETE.
 2. ALL MANHOLE RINGS AND ADJUSTING RINGS SHALL BE SET IN MORTAR.
 3. INSIDE DIAMETER OF MANHOLES TO BE 4'-0" FOR PIPE 21" & SMALLER, 5'-0" FOR PIPE 24" THRU 30", 6'-0" FOR PIPE OVER 30".
 4. PLASTERING OF INSIDE OF MANHOLES SHALL BE THE OPTION OF THE CONTRACTOR.
 5. ALL SEWERS EXTENDING FROM MANHOLES SHALL BE SUPPORTED WITH CONCRETE TO FIRST JOINT.
 6. CONTRACTOR SHALL BE PAID FOR 6" CONCRETE ENCASEMENT AROUND PIPE AS SHOWN IN DETAIL.
 7. LAMP LINES BEFORE AND AFTER INSTALLATION OF CONCRETE ENCASEMENT.
 8. PRECAST MANHOLE SHALL BE WATERPROOFED OUTSIDE.
 9. ALL CONC. MANHOLES TO HAVE RUBBER GASKET ON ALL PIPE OPENINGS.
 10. ALL P.V. be SDR-35.

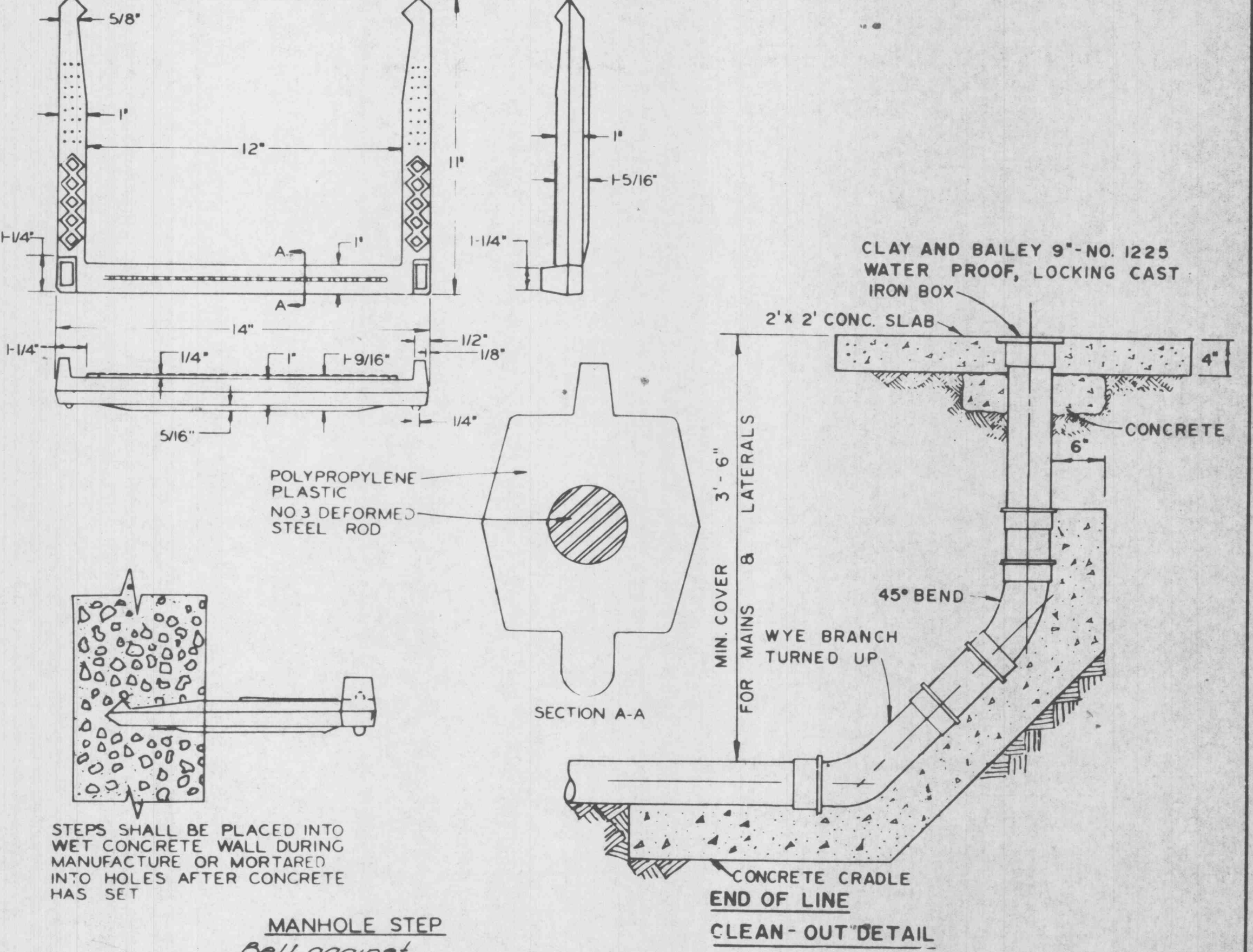


LEGEND:

- Bc OUTSIDE DIA. OF PIPE
- H BACKFILL COVER ABOVE TOP OF PIPE
- D NOMINAL PIPE SIZE
- A FILL BELOW PIPE (SEE TABLE BELOW)

TABLE OF FILL BELOW PIPE	
D	A MIN.
27" & SMALLER	3"
30" TO 60"	4"
66" & LARGER	6"

- NOTES:**
1. GRANULAR FILL TO BE CRUSHED STONE OR PEA GRAVEL WITH NOT LESS 95% PASSING 1/2" AND NOT LESS THAN 95% TO BE RETAINED ON A #4, TO BE PLACED IN NOT MORE THAN 6" LAYERS AND COMPACTED BY SLICING WITH A SHOVEL (1/2" & #4 REFERS TO SIEVE SIZE)
 2. TAMPED BACKFILL SHALL BE FINELY DIVIDED JOB EXCAVATED MATERIAL FREE FROM DEBRIS, ORGANIC MATERIAL AND STONES, COMPACTED TO 95% MAXIMUM DENSITY AS DETERMINED BY A.A.S.H.O. STANDARD METHOD T-99. GRANULAR FILL MAY BE SUBSTITUTED FOR TAMPED BACKFILL TO TOP OF THE PIPE.
 3. HAND PLACED BACKFILL SHALL BE FINELY DIVIDED MATERIAL FREE FROM DEBRIS AND STONES.
 4. ALL BEDDING DETAILS APPLY TO BUILDING SEWER SERVICE LINES AS WELL AS OTHER SEWERS.
 5. CONCRETE CRADLE SHALL BE USED WHEN TRENCH WIDTH EXCEEDS 24" PLUS THE PIPE DIAMETER.
 6. PVC PIPE SHALL BE BEDDED IN ACCORDANCE WITH ASTM D 2321 USING CLASS I (3/4" TO 1/4") GRANULAR MATERIAL.



GBA
 GEORGE BUTLER ASSOCIATES
 CONSULTING ENGINEERS ARCHITECTS
 LANDSCAPE ARCHITECTS PLANNERS

OFFICES:
 225 SOUTH MAIN STREET
 SUITE 200
 O'FALLON, MISSOURI 63366
 PHONE (314) 272-2444

**DOMINO'S PIZZA
 SANITARY SEWER
 CONSTRUCTION DETAILS**
 PREPARED FOR
CITY OF O'FALLON

DESIGNED BY *FLK* DRAWN BY *S.R.S.* CHECKED BY *B.R.H.*

JOB NO. 8955
 DATE July, 1987
 SCALE AS SHOWN
 SHEET NO. 6 OF 6

STATE OF MISSOURI
 REGISTERED PROFESSIONAL ENGINEER
 GERALD R. HURLBERT
 NUMBER E-19844