

Baggs & Associates
 Incorporated
 CONSULTING ENGINEERING
 LAND PLANNING
 301 Sovereign Court, Suite 103
 Ballwin, Missouri 63011
 314-391-8440

Sheet Title: **SITE & GRADING PLAN**
 By: **DOYLE SHOCKLEY**
 Date:

Project Title: **DOYLE SHOCKLEY**
 Description: **RR Tie Retaining Wall**
 Rev: **7.2.2 5/23/91**
 Rev: **11.5 8/15/91**
 Rev: **11.5 8/15/91**
 Rev: **11.5 8/15/91**

Project manager: **DRK**
 Designer: **DRK**
 Drawn: **Y.A.Z.**
 Checked: **DRK**
 Date: **4/29/91**
 Printed: **8/5/91**
 Job number: **91-189**

2
2

DESCRIPTION OF PROPERTY

A tract of land in Section 26, Township 47 North, Range 3 East, City of O'Fallon in St. Charles County, Missouri and being more particularly described as follows:

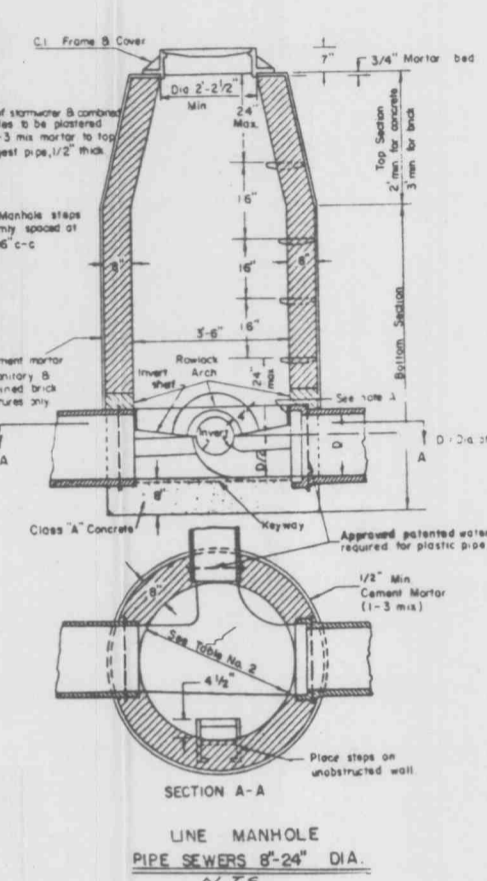
Beginning at the Northwest corner of U.S. Survey No. 1808; thence North 88 degrees 42 minutes 41 seconds West, 628.06 feet to an old iron pipe with cap (L.S. 54 D), on the Western Right-of-Way line of the North Outer Road to Interstate 70 marking the true point of beginning of the tract of land herein described; thence southwardly along the western right-of-way of said outer road South 10 degrees 31 minutes 32 seconds West, 135.72 feet to an existing Missouri Department of Transportation Right-of-way marker; thence continuing southwardly along said right-of-way along a curve to the right having a central angle of 42 degrees 29 minutes 02 seconds and a radius of 408.37 feet, 302.80 feet to an iron pipe; thence leaving said right-of-way North 00 degrees 37 minutes 51 seconds East, 389.00 feet to an old iron stake; thence South 88 degrees 42 minutes 41 seconds East, 176.34 feet to the point of beginning, containing 1.081 acres.

PARKING REQUIREMENTS

- 6000 S.F. Gross Floor Space
 - 1 space per 400 S.F. of office space = 2 parking spaces
 - 600 S.F. of office space
 - 1 space per 2000 S.F. of warehouse space = 3 parking spaces
 - 5400 S.F. of warehouse space
 - 1 space per employee = 4 parking spaces
 - 4 employees
- 9 parking spaces required
- 10 parking spaces provided (including 1 handicap space)

NOTE: Note One Sign To Be Placed At Each Handicapped Parking Place. As Handicapped Parking Spaces Shall Be Level With Walk, And The Main Entrance To A Building Shall Be Level With The Walk.

HANDICAPPED PARKING SIGN DETAIL
n.f.s.



MH 100

MH 101

MH 102

MH 103

MH 104

MH 105

MH 106

MH 107

MH 108

MH 109

MH 110

MH 111

MH 112

MH 113

MH 114

MH 115

MH 116

MH 117

MH 118

MH 119

MH 120

MH 121

MH 122

MH 123

MH 124

MH 125

MH 126

MH 127

MH 128

MH 129

MH 130

MH 131

MH 132

MH 133

MH 134

MH 135

MH 136

MH 137

MH 138

MH 139

MH 140

MH 141

MH 142

MH 143

MH 144

MH 145

MH 146

MH 147

MH 148

MH 149

MH 150

MH 151

MH 152

MH 153

MH 154

MH 155

MH 156

MH 157

MH 158

MH 159

MH 160

MH 161

MH 162

MH 163

MH 164

MH 165

MH 166

MH 167

MH 168

MH 169

MH 170

MH 171

MH 172

MH 173

MH 174

MH 175

MH 176

MH 177

MH 178

MH 179

MH 180

MH 181

MH 182

MH 183

MH 184

MH 185

MH 186

MH 187

MH 188

MH 189

MH 190

MH 191

MH 192

MH 193

MH 194

MH 195

MH 196

MH 197

MH 198

MH 199

MH 200

MH 201

MH 202

MH 203

MH 204

MH 205

MH 206

MH 207

MH 208

MH 209

MH 210

MH 211

MH 212

MH 213

MH 214

MH 215

MH 216

MH 217

MH 218

MH 219

MH 220

MH 221

MH 222

MH 223

MH 224

MH 225

MH 226

MH 227

MH 228

MH 229

MH 230

MH 231

MH 232

MH 233

MH 234

MH 235

MH 236

MH 237

MH 238

MH 239

MH 240

MH 241

MH 242

MH 243

MH 244

MH 245

MH 246

MH 247

MH 248

MH 249

MH 250

MH 251

MH 252

MH 253

MH 254

MH 255

MH 256

MH 257

MH 258

MH 259

MH 260

MH 261

MH 262

MH 263

MH 264

MH 265

MH 266

MH 267

MH 268

MH 269

MH 270

MH 271

MH 272

MH 273

MH 274

MH 275

MH 276

MH 277

MH 278

MH 279

MH 280

MH 281

MH 282

MH 283

MH 284

MH 285

MH 286

MH 287

MH 288

MH 289

MH 290

MH 291

MH 292

MH 293

MH 294

MH 295

MH 296

MH 297

MH 298

MH 299

MH 300

MH 301

MH 302

MH 303

MH 304

MH 305

MH 306

MH 307

MH 308

MH 309

MH 310

MH 311

MH 312

MH 313

MH 314

MH 315

MH 316

MH 317

MH 318

MH 319

MH 320

MH 321

MH 322

MH 323

MH 324

MH 325

MH 326

MH 327

MH 328

MH 329

MH 330

MH 331

MH 332

MH 333

MH 334

MH 335

MH 336

MH 337

MH 338

MH 339

MH 340

MH 341

MH 342

MH 343

MH 344

MH 345

MH 346

MH 347