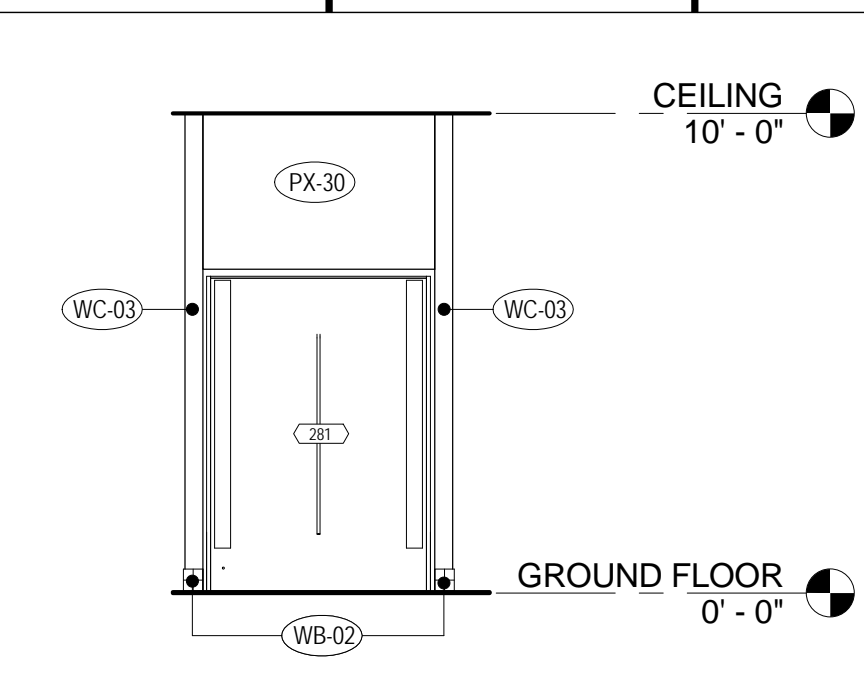
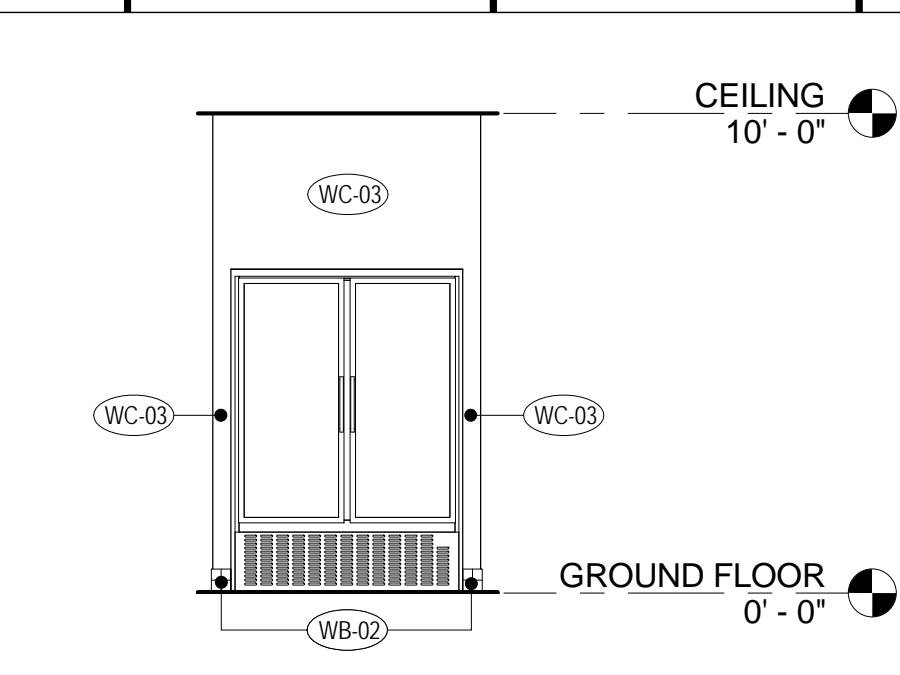


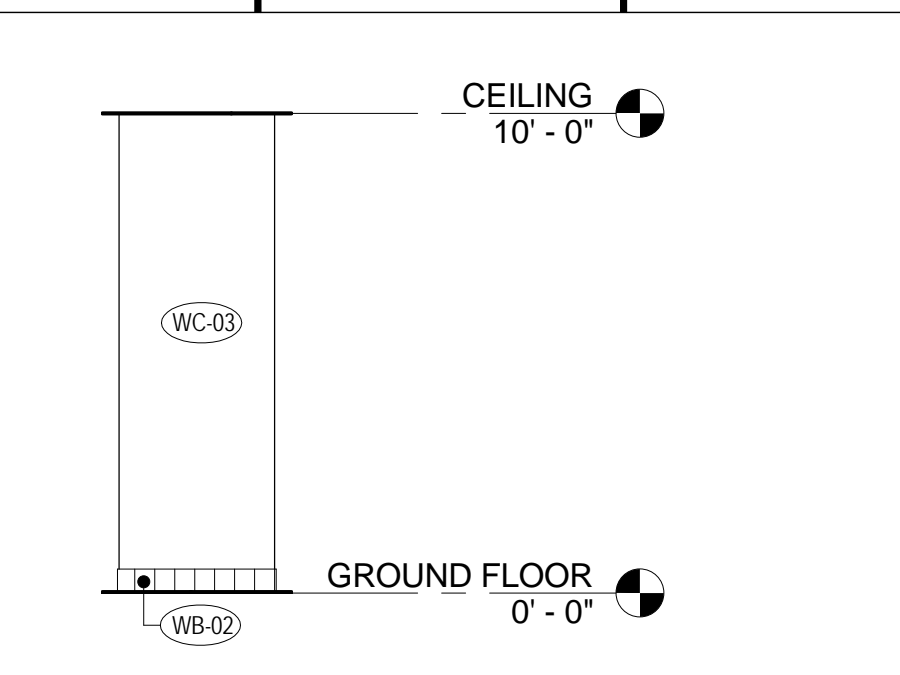
C1 BR CAKE DISPLAY ENLARGED PLAN
1/2" = 1'-0"



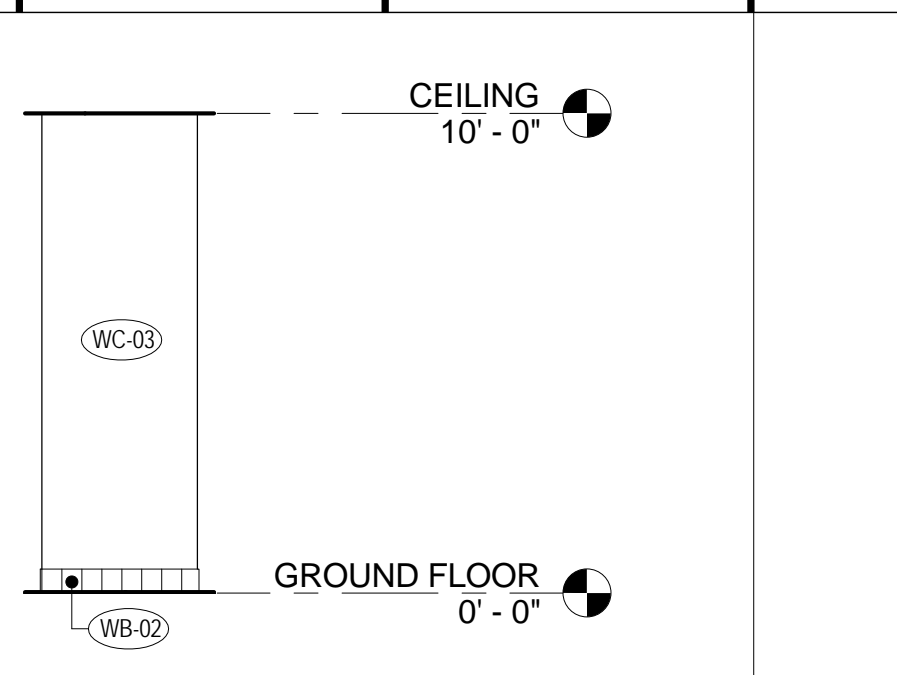
C4 CAKE DISPLAY REAR
1/4" = 1'-0"



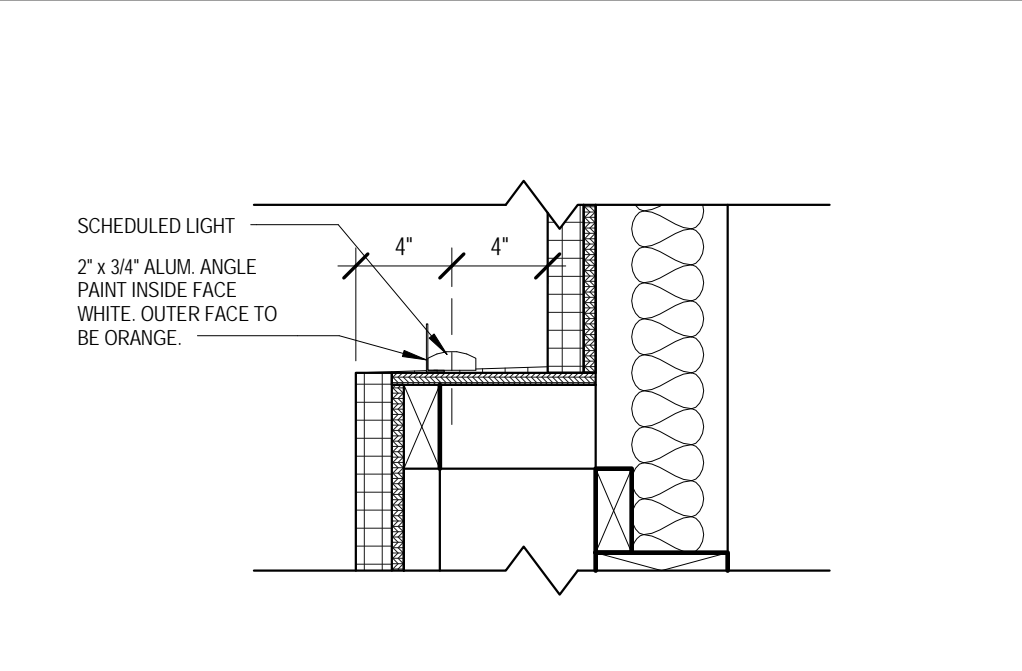
C6 CAKE DISPLAY FRONT
1/4" = 1'-0"



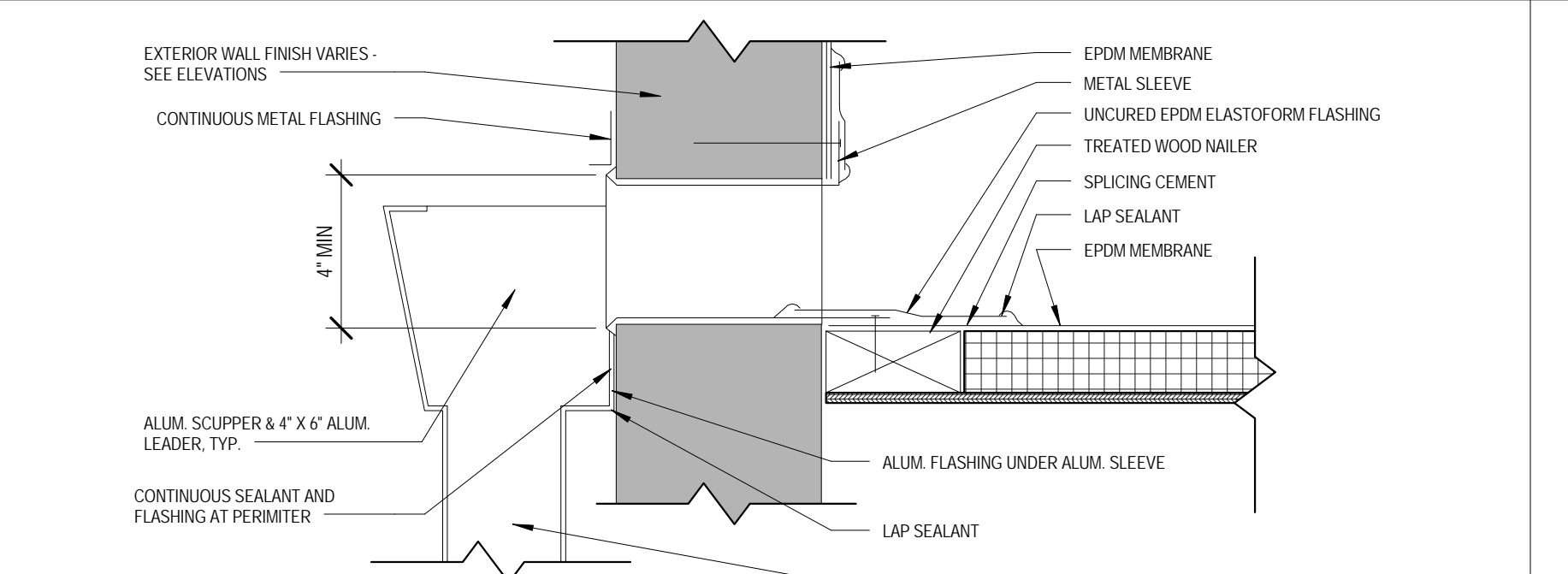
C9 CAKE DISPLAY SIDE 1
1/4" = 1'-0"



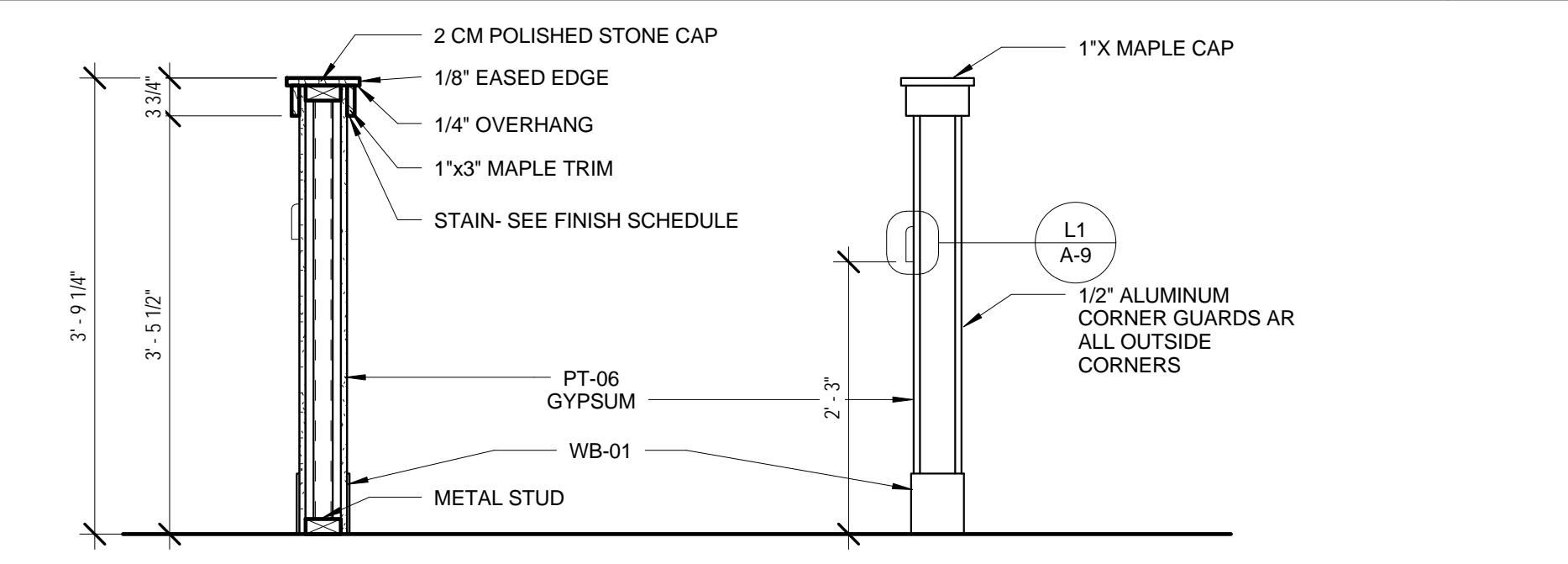
C12 CAKE DISPLAY SIDE 2
1/4" = 1'-0"



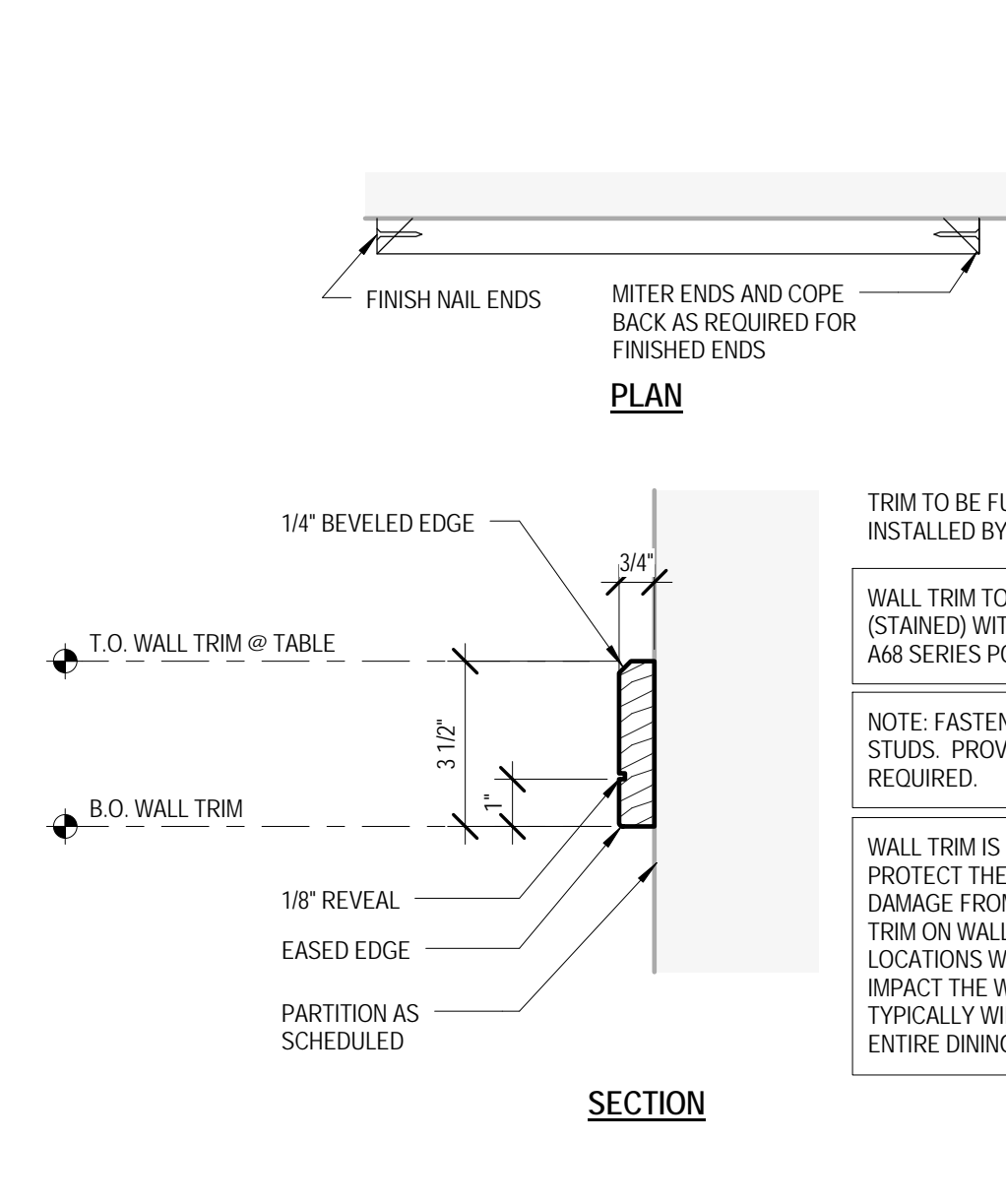
F1 LED STRIP LIGHT AT ORANGE BAND
1 1/2" = 1'-0"



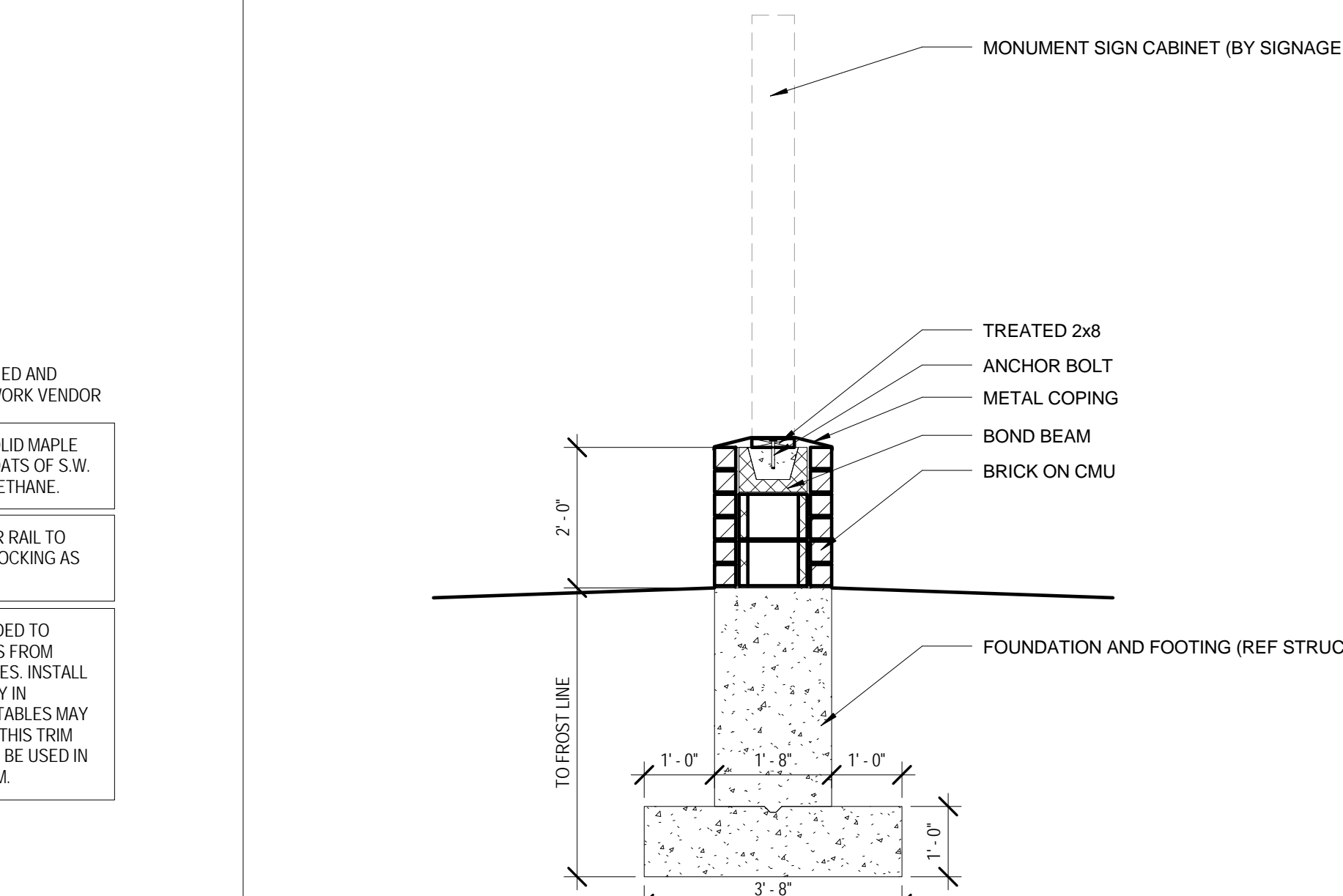
F4 SCUPPER DETAIL
1 1/2" = 1'-0"



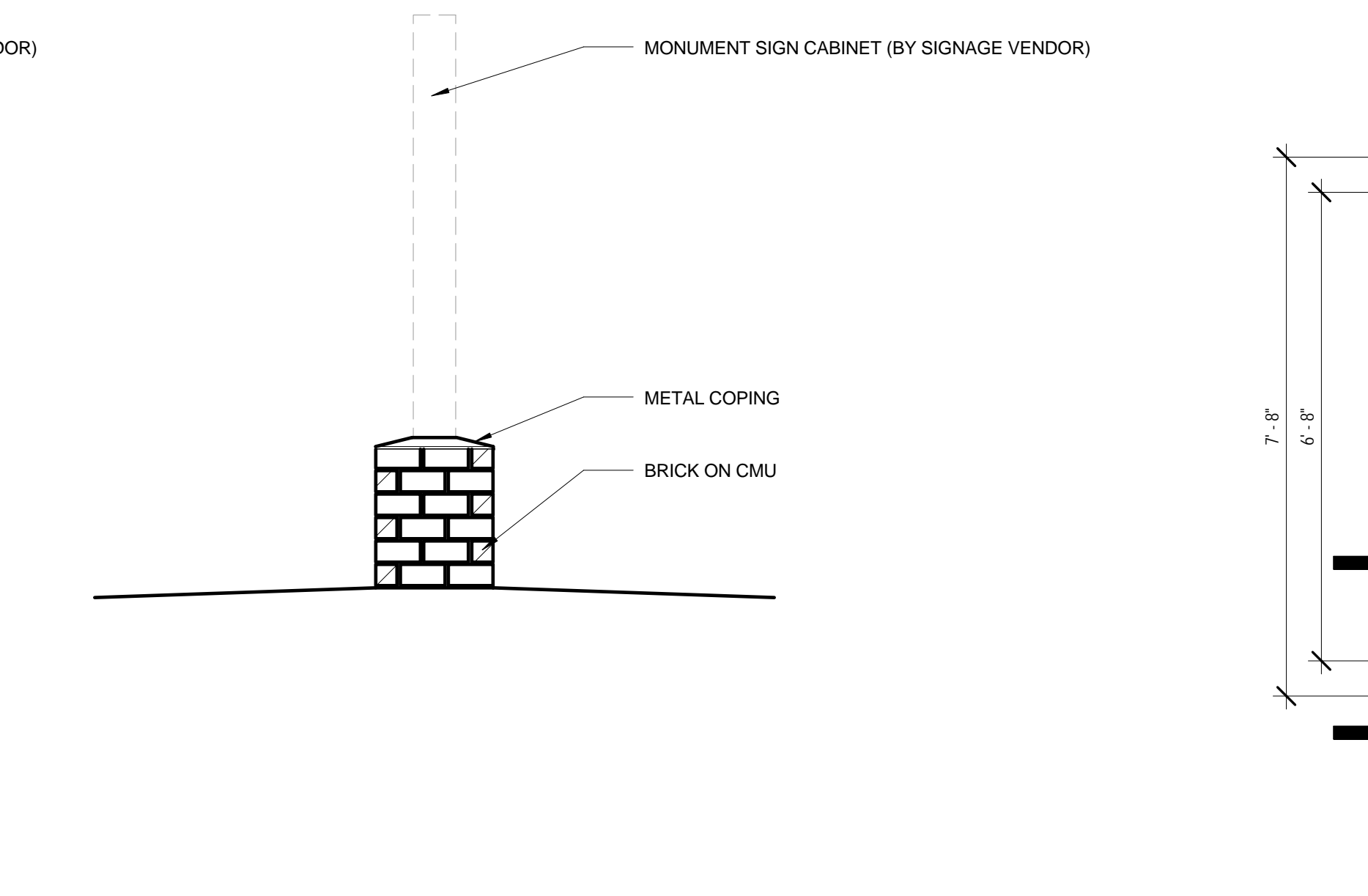
C14 SECTION HALF WALL DETAIL
3/4" = 1'-0"



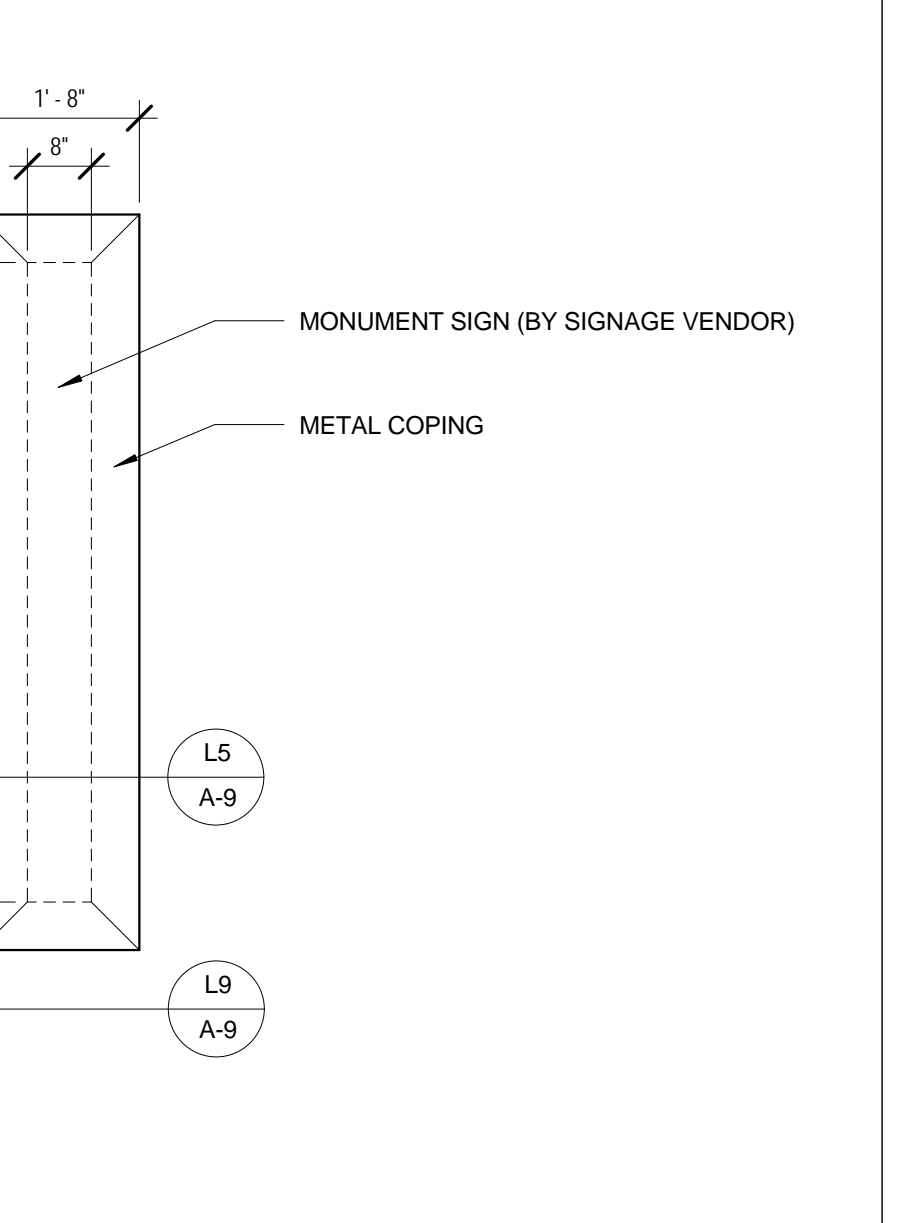
L1 WALL TRIM DETAIL
3" = 1'-0"



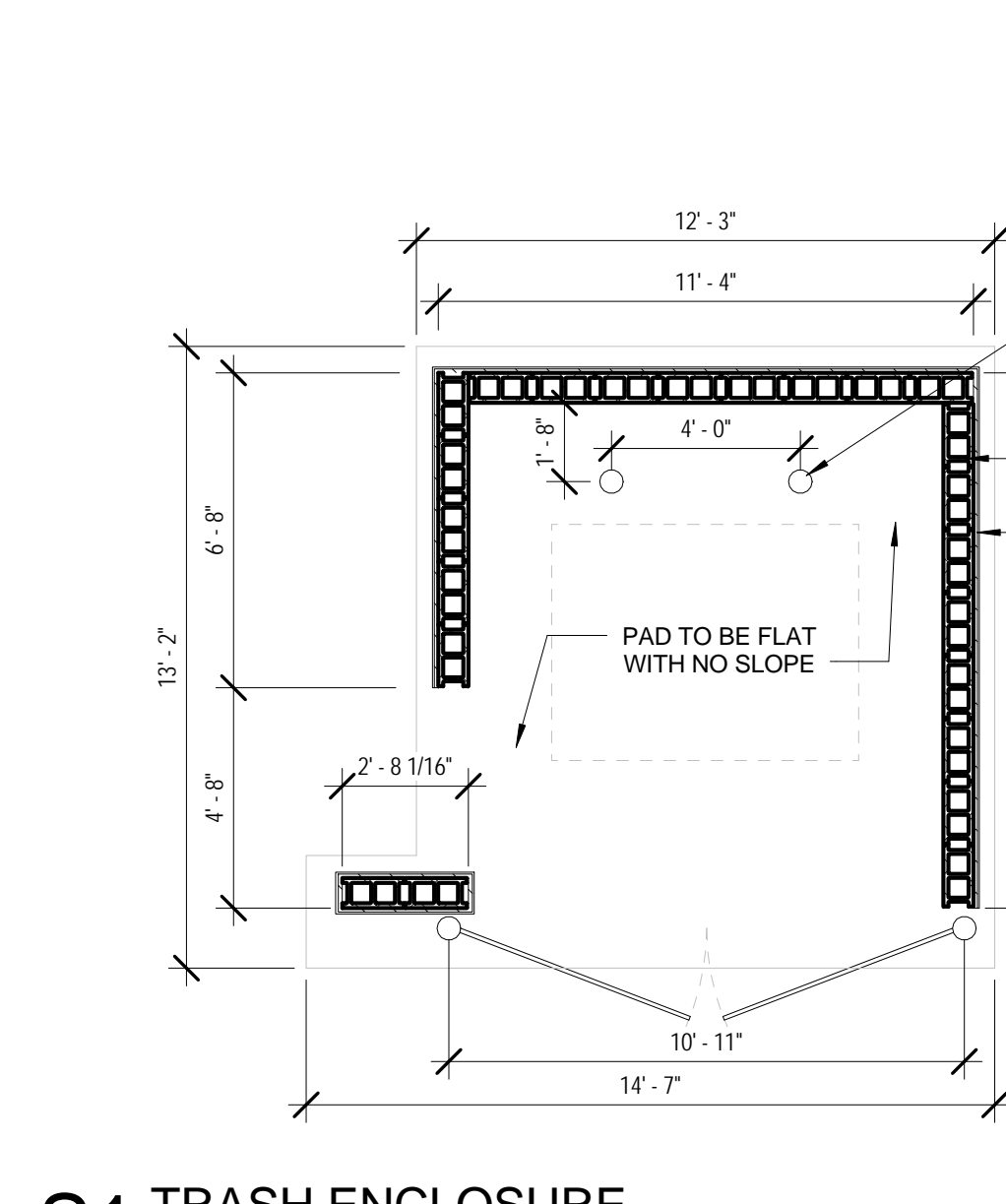
L5 MONUMENT SIGN SECTION
1/2" = 1'-0"



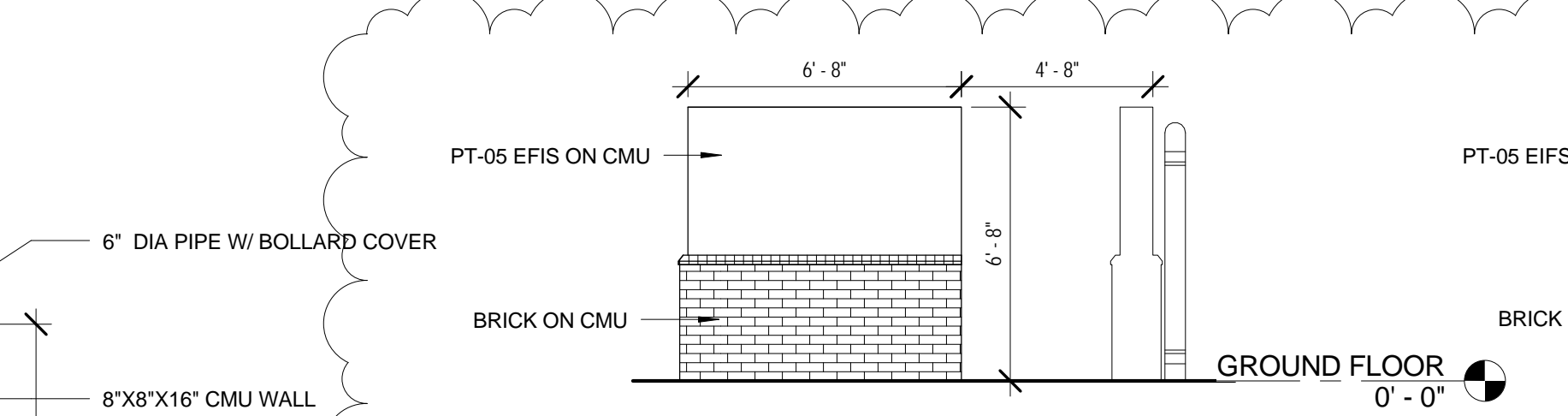
L9 MONUMENT SIGN ELEVATION
1/2" = 1'-0"



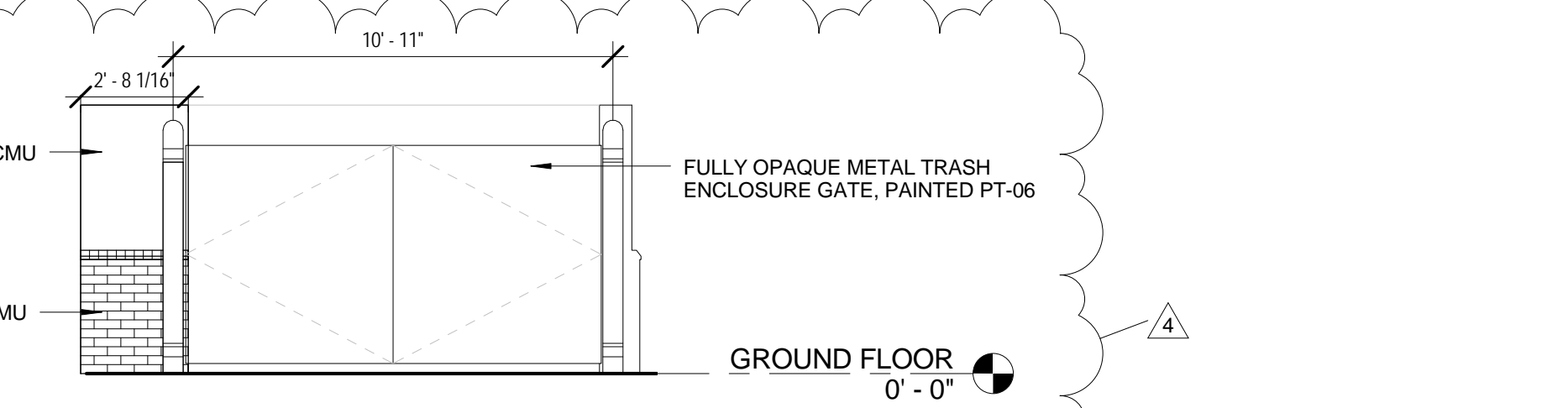
L14 MONUMENT SIGN PLAN
1/2" = 1'-0"



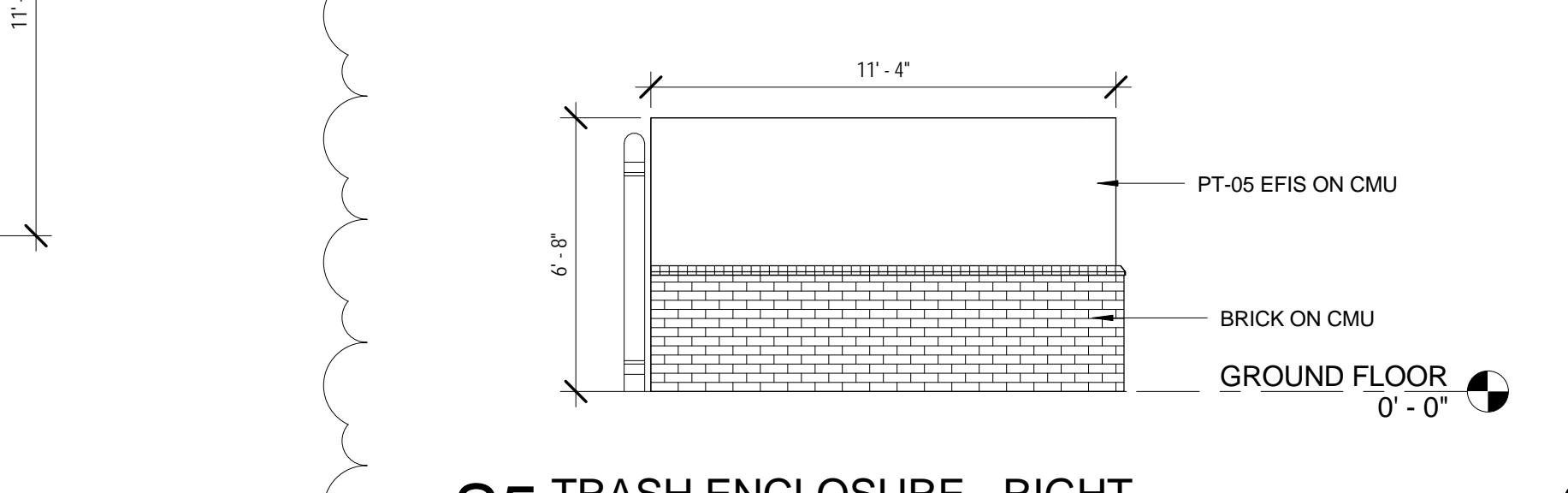
S1 TRASH ENCLOSURE
1/4" = 1'-0"



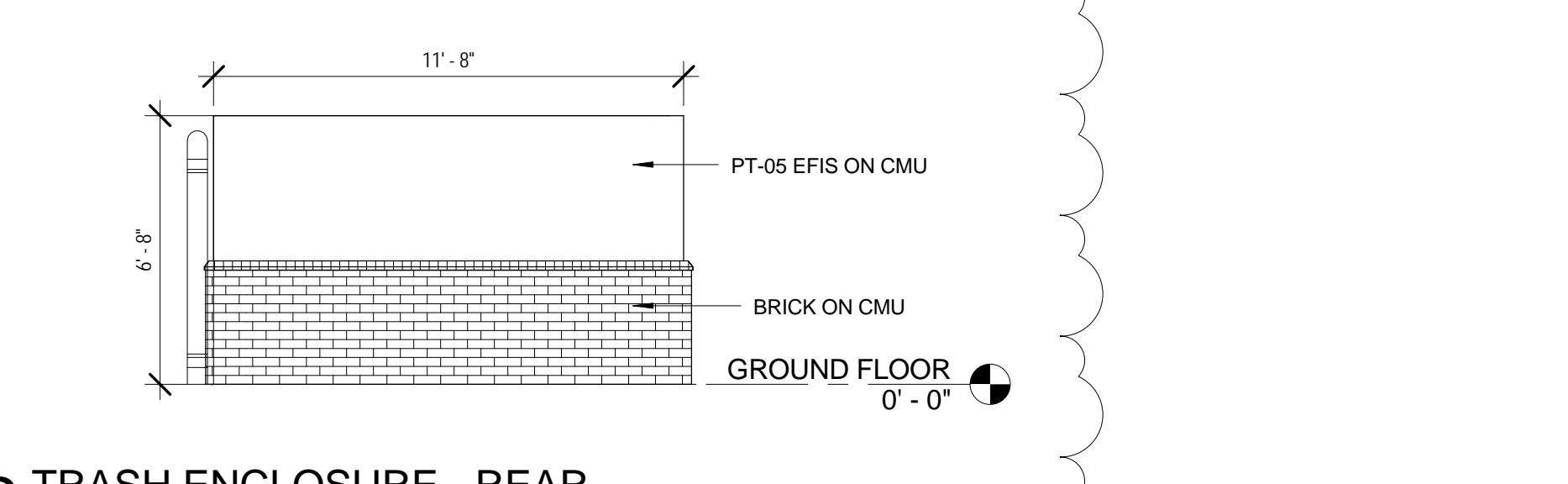
N5 TRASH ENCLOSURE - LEFT
1/4" = 1'-0"



N9 TRASH ENCLOSURE - FRONT
1/4" = 1'-0"



S5 TRASH ENCLOSURE - RIGHT
1/4" = 1'-0"



S9 TRASH ENCLOSURE - REAR
1/4" = 1'-0"



DUNKIN - OFALLON
PC#354444
3955 STATE HWY K
OFALLON, MO 63366

#	Description	Date
1	Bid Clarifications	07/14/2015
4	Trash Enclosure	10/12/2015

These drawings/specifications are the property of Oculus Inc. They are furnished as contract documents only. The seal(s) and signature(s) apply only to the document to which they are affixed, and represent the responsibility of the signatory for all other plans, specifications, estimates, reports or other documents or instruments relating to or intended to be used for any part or parts of the architectural or engineering project. Additionally, these drawings and specifications shall in no way convey or imply any type of warranty or certification related to the performance of products and materials beyond those provided by their respective manufacturer. © 2015 Oculus Inc.

PERMIT SET

Client Approval

MISCELLANEOUS DETAILS

Project # 41715-M001
Issue Date 6/26/2015
Scale As indicated
Drawn by AJD
Checked by MTB