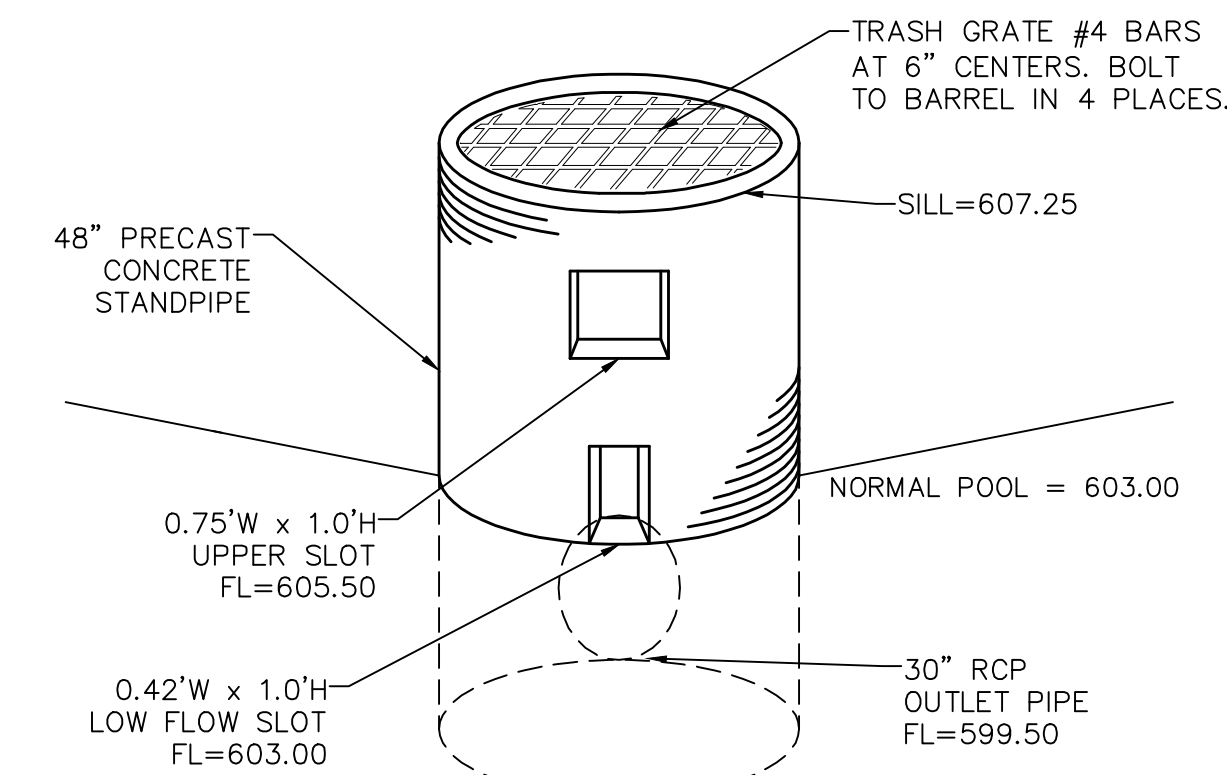


Retention Basin Detail
SCALE: 1" = 30'

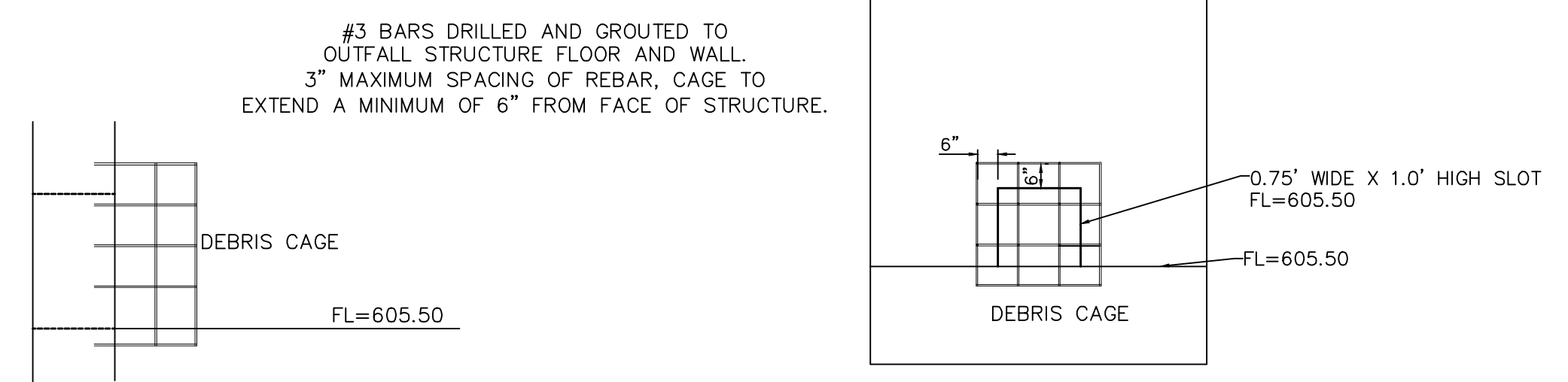


CALL BEFORE YOU DIG!
1-800-DIG-RITE

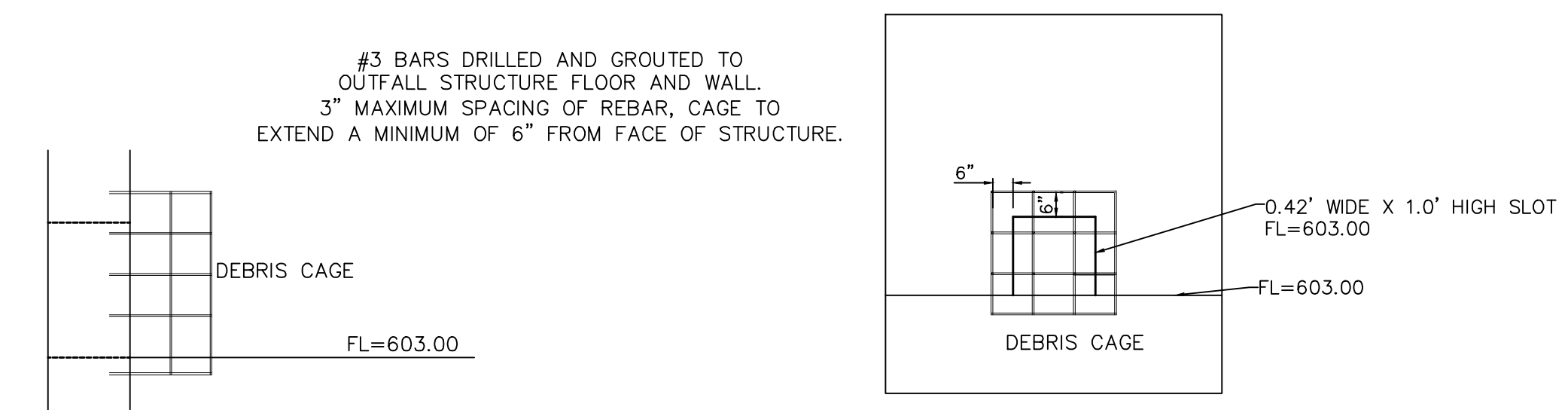
UNDERGROUND UTILITIES HAVE BEEN PLOTTED FROM AVAILABLE INFORMATION AND THEREFORE THEIR LOCATIONS SHALL BE CONSIDERED APPROXIMATE ONLY. THE VERIFICATION OF THE LOCATION OF ALL UNDERGROUND UTILITIES, EITHER SHOWN OR NOT SHOWN ON THESE PLANS SHALL BE THE RESPONSIBILITY OF THE CONTRACTOR, AND SHALL BE LOCATED PRIOR TO ANY GRADING OR CONSTRUCTION OF THE IMPROVEMENTS.



OVERFLOW STRUCTURE 101 DETAIL
NOT TO SCALE



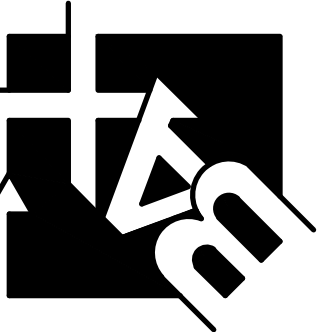
DEBRIS CAGE OS 101-UPPER SLOT
NOT TO SCALE



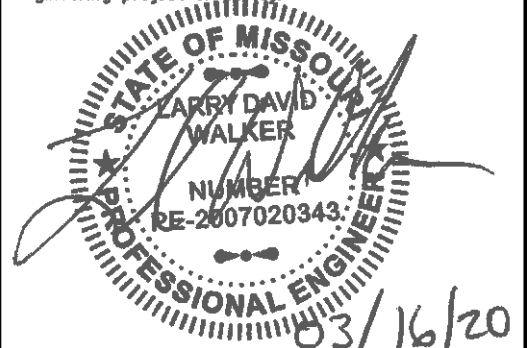
DEBRIS CAGE OS 101-LOWER SLOT
NOT TO SCALE

PROJECT TITLE:
CONSTRUCTION PLANS FOR
DYNAFLEX
8050 HAWK RIDGE TRAIL
O'FALLON, MISSOURI 63376

ENGINEERING
PLANNING
SURVEYING
22 Point View Blvd.
St. Charles, MO 63301
636-928-5552
FAX 928-1718



DISCLAIMER OF RESPONSIBILITY
I hereby specify that the documents intended to be authorized by my seal are limited to this project, and I hereby disclaim any responsibility for all other drawings, specifications, estimates, reports or other documents or instruments relating to or intended to be used for any part or parts of the architectural or engineering project of any kind.



Larry D. Walker
Civil Engineer
2007020343
Copyright © 2019
Box Engineering Company, Inc.
Authority No. 000655
All Rights Reserved

REVISIONS	
1-21-20	DCSD COMMENTS
1-31-20	DCSD/PWSO/FIRE COMMENTS
2-11-20	CITY/FIRE COMMENTS
2-12-20	PWSO COMMENTS
2-20-20	MODOT COMMENTS
3-16-20	WATER TAP REVISION

Developer / Owner:
Duke Property Management L.L.C.
10403 International Plaza
St. Ann, Missouri 63074
(314) 426-4020

P+Z No. #19-003530
Approval Date 11-07-19

City No. #

Page No.