

KENNEDY VALVE KS-FW RESILIENT WEDGE VALVES
 KENNEDY VALVE

KENNEDY VALVE AWWA C509 Resilient Wedge Gate Valves Meet or Exceed the Requirements of AWWA Standard C509
 UL-282 FPM-1120/1130
 ULC-Underwriters of Canada

Size Range	Water Working Pressure psi	Seat Test psi	Hydrostatic Shell Test psi
AWWA 24"-32"	250 Water Works	250 & 400	500
ULC 24"-32"	200 Fire Protection	250 & 400	500

Available in either non-rising stem or outside screw & yoke.

Available End Connections & Size Range	Figure No. (STD)	Post Plate
Fig. End (NRS)	2" - 12"	8561ASS (2"-12")
M.J.	3" - 12" (except 2 1/2")	8571SB (2"-12")
Fig. End (A.Y.)	3" - 12"	8572SB (2"-12")
Push-on for PVC (BOR)	3" - 12"	8573SB (2"-12")
Fig. End (A.Y.)	4" - 12"	8583SB (2"-12")
M.J. for Tapping	4" - 12"	8593SB (2"-12")
Push-on for D.I. & C900 PVC	4" - 12"	8603SB (2"-12")
M.J. Callignig	4" - 12"	8575SB (2"-12")
Push-on D.I. Fig.	4" - 12"	8595SB (2"-12")
Threaded (OS&Y)	2" - 3"	8578SB (2"-12")
Threaded (OS&Y)	2" - 3"	8608SB (2"-12")

Accessories:
 Indicator Plates, Handwheels, 17" Indicator, Ratchet Steerns, Floor Guides, 2" Sq. Operating Nuts, Chain Wheels, Floorboards (operating stem).

NOTE: 2" OS&Y Flanged and Threaded versions are UL Listed.

NSF
 Certified to NSF/ANSI 312
 NSF 312

301913 Kennedy Valve/KS-FW C509 3-1

EBA IRON MEGA-COUPLING Series 3800
 Restraint Coupling

Features and Applications:

- For use on:
 - Ductile Iron Pipe 4 in. - 64 in.
 - ASME A15.1 PVC Pipe 4 in. - 12 in.
 - ASME A15.1 PVC Pipe 14 in. - 36 in.
 - Carbon Steel Pipe 4 in. - 12 in.
 - ASME Pipe 4 in. - 12 in.
- Minimum 2 to 1 Safety Factor
- MEGA-BOND® Restraint Coating System
 - For more information regarding MEGA-BOND refer to our website at www.eba.com
- Constructed of:
 - Restraint Rings - ASTM A536 Ductile Iron (DI)
 - Coupling Sleeve - 4" - 24" IN. ASTM A536 DI
 - Coupling Sleeve - 34 in. and greater Carbon Steel
 - Double Ended Threaded Rods & Nuts - Corrosion Resistant, low alloy high strength steel per ANSI/ASME A191/A21.11
 - ACTV 152000
- Couplings meet or exceeds the applicable requirements of:
 - AWWA C519
 - ASTM A536
 - ANSI/ASME A191/A21.11
 - ACTV 152000

The Series 3800 are designed to restrain forces based on the maximum working pressure ratings listed in the Pressure Ratings Table.

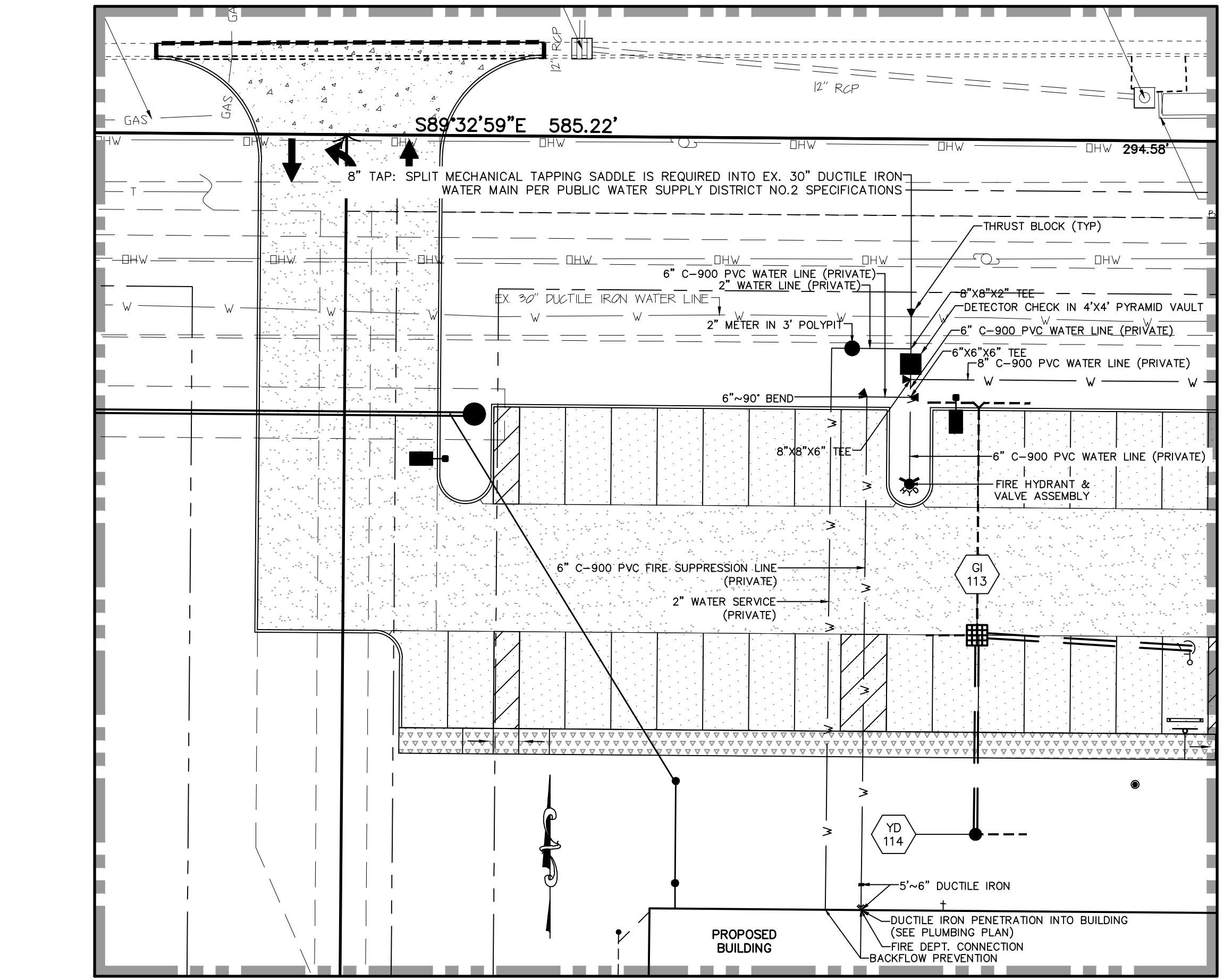
For use on water or wastewater pipelines subject to hydrostatic pressure and tested in accordance with either AWWA C509 or ASTM A2211A.

Nominal Pipe Size (NPS)	Actual Outside Diameter (OD)	Standard		High Pressure		Special		Special		Special	
		Weight (lb/ft)	Pressure Rating (psi)	Weight (lb/ft)	Pressure Rating (psi)	Weight (lb/ft)	Pressure Rating (psi)	Weight (lb/ft)	Pressure Rating (psi)	Weight (lb/ft)	Pressure Rating (psi)
4	4.500	28.40	250	250	150	100	250	150	100	250	150
6	6.625	49.80	250	250	150	100	250	150	100	250	150
8	8.625	73.50	250	250	150	100	250	150	100	250	150
10	10.750	98.40	250	250	150	100	250	150	100	250	150
12	12.750	124.50	250	250	150	100	250	150	100	250	150
14	14.750	151.50	250	250	150	100	250	150	100	250	150
16	16.750	179.40	250	250	150	100	250	150	100	250	150
18	18.750	208.10	250	250	150	100	250	150	100	250	150
20	20.750	237.60	250	250	150	100	250	150	100	250	150
24	24.750	294.20	250	250	150	100	250	150	100	250	150
30	30.000	369.00	250	250	150	100	250	150	100	250	150
36	36.000	443.50	250	250	150	100	250	150	100	250	150
42	42.000	517.80	250	250	150	100	250	150	100	250	150
48	48.000	591.70	250	250	150	100	250	150	100	250	150
54	54.000	665.00	250	250	150	100	250	150	100	250	150

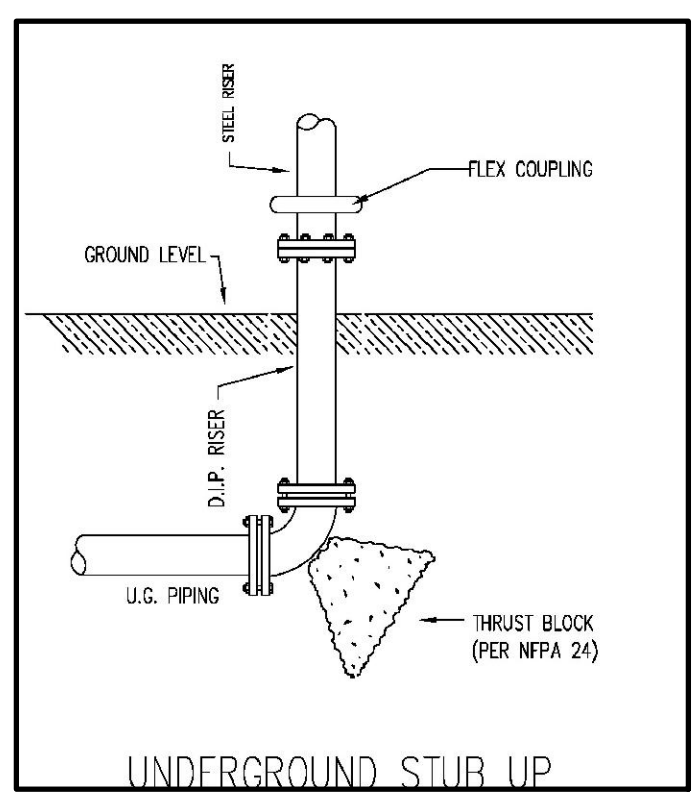
Special Notes For Use On HDPE Pipe:
 For use on 4" to 12" through 12" to 24" HDPE pipe. The use of a pipe with a tapping saddle is required for use on HDPE pipe. The tapping saddle must be used to accommodate the size being length of the restraint device. Pipe systems must be engineered to prevent movement causing lifting or side of notes.

ES&A products for HDPE are designed for underground and pressurized fluid service and are pressure rated to match the pipe's DR pressure rating. Do not use for applications where the pipe is used for surface water. Maximum test pressure limited to pipe rated pressure.

Copyright © 2014 EBA Iron, Inc.



- PUBLIC WATER SUPPLY DISTRICT NO. 2**
- ALL WATER MAINS, VALVES, FITTINGS, HYDRANTS, AND RELATED ITEMS ARE TO BE INSTALLED IN ACCORDANCE WITH THE CURRENT ST. CHARLES COUNTY PWS# NO. 2 GUIDELINES AND SPECIFICATIONS AS APPROVED BY MONR REVIEW NO. 6050805-13.
 - PWS# NO. 2 REQUIRES ONE (1) WEEK NOTICE PRIOR TO THE START OF CONSTRUCTION.
 - ALL METER PITS/VAULTS ARE TO BE INSTALLED IN GREEN SPACE PER PWS# NO. 2 SPECIFICATIONS.
 - ALL PRIVATE FIRE HYDRANTS MUST BE PAINTED RED PER PWS# NO. 2 SPECIFICATIONS.
 - IT IS THE CONTRACTOR'S RESPONSIBILITY TO OBTAIN ALL MODOT AND CITY PERMITS REQUIRED TO WORK ALONG THE ROADWAYS. COPIES OF ALL REQUIRED PERMITS SHALL BE PROVIDED TO PWS# NO. 2 PRIOR TO CONSTRUCTION.
 - ALL OFFSITE RESTORATION MUST BE REPAIRED WITH SOD UNLESS OTHERWISE REQUESTED FROM THE PROPERTY OWNERS.
 - THE PROPOSED PRIVATE WATER SYSTEM WILL REQUIRE TESTING PER PWS# NO. 2 SPECIFICATIONS BEFORE IT IS ALLOWED INTO SERVICE.
 - ALL GRADING WORK COMPLETED OVER OR NEAR THE PWS# NO. 2 EXISTING 30" TRANSMISSION MAIN MUST BE PERFORMED WITH EXTREME CAUTION. ALL EXISTING FIRE HYDRANTS, INLINE VALVES AND TAPPING VALVES MUST REMAIN OR BE BROUGHT TO GRADE.



CALL BEFORE YOU DIG!
 1-800-DIG-RITE

WISCONSIN ONE CALL SYSTEM, INC.
 1-800-4-A-7-8787
 5-DIG CALL BEFORE YOU DIG!

UNDERGROUND UTILITIES HAVE BEEN PLOTTED FROM AVAILABLE INFORMATION AND THEREFORE THEIR LOCATIONS SHALL BE CONSIDERED APPROXIMATE ONLY. THE VERIFICATION OF THE LOCATION OF ALL UNDERGROUND UTILITIES, EITHER SHOWN OR NOT SHOWN ON THESE PLANS SHALL BE THE RESPONSIBILITY OF THE CONTRACTOR, AND SHALL BE LOCATED PRIOR TO ANY GRADING OR CONSTRUCTION OF THE IMPROVEMENTS.

PROJECT TITLE:
 CONSTRUCTION PLANS FOR
 DYNALFX
 8050 HAWK RIDGE TRAIL
 O'FALLON, MISSOURI 63376

ENGINEERING COMPANY:
 ENGINEERING COMPANY, INC.
 221 Point View Blvd.
 St. Charles, MO 63301
 636-928-5552 FAX 636-928-1718

DISCLAIMER OF RESPONSIBILITY:
 I hereby certify that the documents intended to be authorized by my seal are limited to this sheet, and I hereby disclaim any responsibility for all other drawings, specifications, estimates, reports or other documents or instruments relating to or intended to be used for any part or parts of the architectural or engineering project of which this sheet is a part.

Professional Engineer Seal:
 STATE OF MISSOURI
 LARRY D. WALKER
 No. 000655
 EXPIRES 12/31/2015
 12/16/20

Developer / Owner:
 Duke Property Management L.L.C.
 10403 International Plaza
 St. Ann, Missouri 63074
 (314) 426-4020

Water Details

P+Z No. #19-003530
Approval Date 11-07-19

City No. #

Page No. 18 of 19