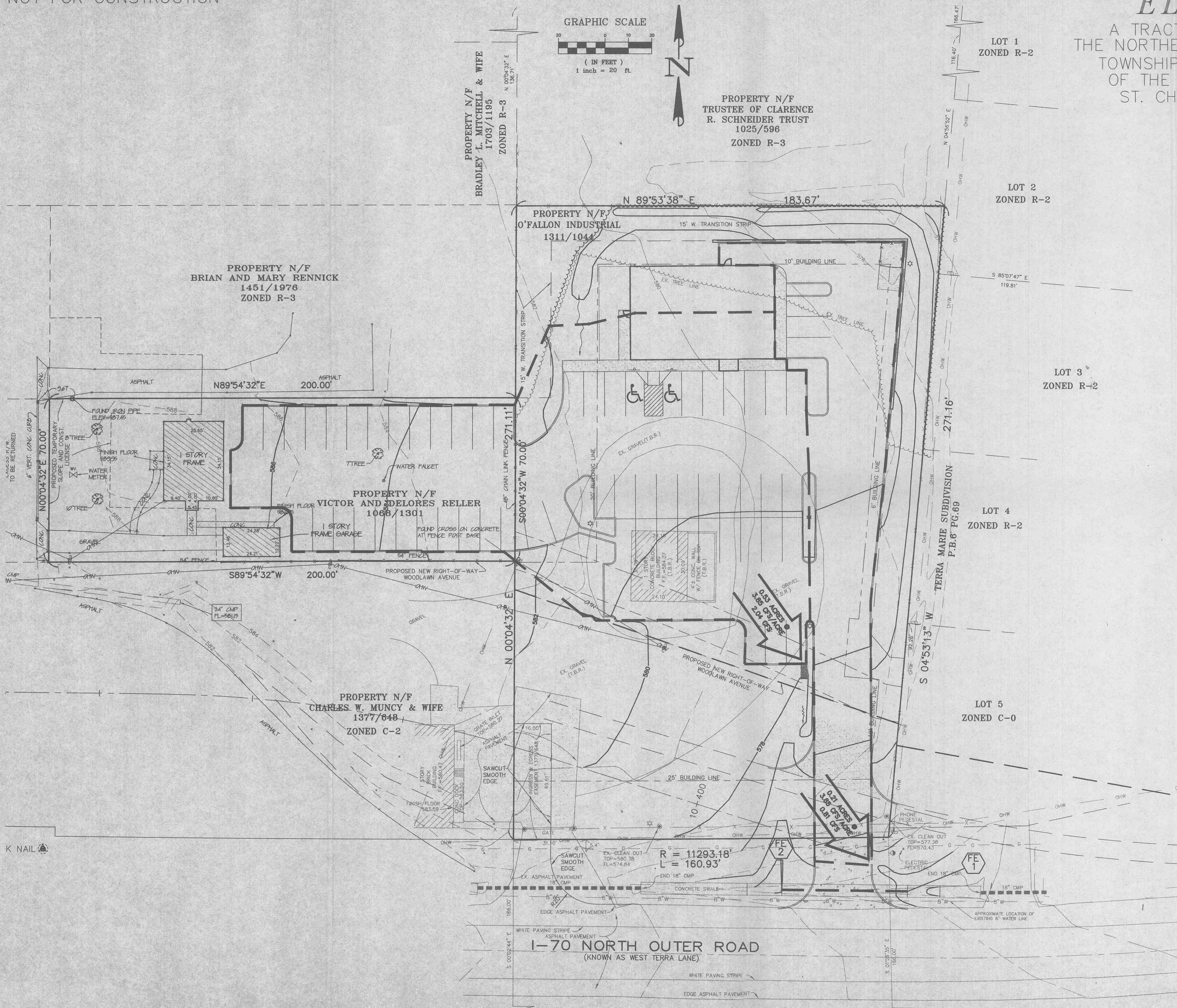


THIS MAP FOR DRAINAGE AREA PURPOSES ONLY,  
NOT FOR CONSTRUCTION

# CONSTRUCTION PLANS FOR EL TIO PEPE

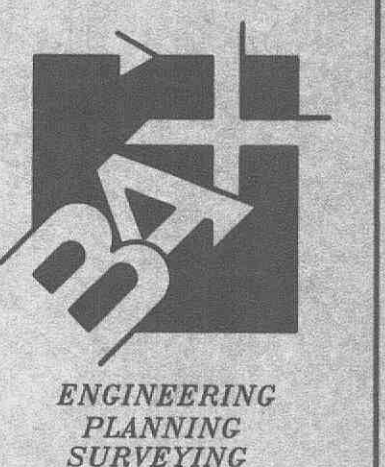
A TRACT OF LAND BEING PART OF  
THE NORTHEAST QUARTER OF SECTION 29,  
TOWNSHIP 47 NORTH, RANGE 3 EAST  
OF THE FIFTH PRINCIPAL MERIDIAN,  
ST. CHARLES COUNTY, MISSOURI



DISCLAIMER OF RESPONSIBILITY  
I hereby specify that the documents intended to be authorized by my seal are limited to this sheet, and I hereby disclaim any responsibility for all other drawings, specifications, estimates, reports or other documents or instruments relating to or intended to be used for any part or parts of the architectural or engineering project or survey.

Copyright 1997  
Box Engineering Company, Inc.  
All Rights Reserved

REVISIONS	
10-10-97	REVISIONS
11-21-97	REVISIONS
5-18-98	REVISIONS
6-02-98	REVISIONS
10-13-98	REAR DRIVE
7-28-99	ADDITIONAL PARKING
8-16-99	REVISIONS



1052 South Cloverleaf Drive  
St. Peters, MO. 63376-6445  
314-928-5552  
FAX 928-1718

9-11-97  
DATE  
97-9351  
PROJECT NUMBER  
2 OF 3  
SHEET OF  
9351CON.DWG  
FILE NAME  
CJD RLF  
DRAWN CHECKED

\\Bax\drive\DWG\9351CON.DWG Thu Aug 19 11:21:45 1999 5:43:10 PM 36 RWG