

LEGEND

LD = NOMINAL PIPE SIZE
 O.D. = OUTSIDE DIAMETER OF PIPE
 H = COVER ABOVE TOP OF PIPE
 A = EMBEDDED BELOW PIPE (SEE TABLE)

--- TAMPAED BACK FILL
 --- COMPACTED BACK FILL
 --- GRANULAR BEDDING

TABLE OF EMBEDDED DEPTHS BELOW PIPE

LD	A MIN. SOIL	A MIN. ROCK
27" & SMALLER	3"	6"

GRANULAR BEDDING SHALL BE CRUSHED ROCK OR PEA GRAVEL WITH NOT LESS THAN 80% PASSING 1/2" (80% PASSING 3/4" FOR 30" AND LARGER PIPE) AND NOT LESS THAN 80% RETAINED ON #4. TO BE PLACED IN NOT MORE THAN 6" LAYERS AND COMPACTED BY SLICING WITH A SHOVEL OR VIBRATING.

COMPACTED BACK FILL SHALL BE FINELY DIVIDED JOB EXCAVATED MATERIAL FREE FROM DEBRIS, ORGANIC MATERIAL AND STONES, PLACED IN UNIFORM LAYERS NOT MORE THAN 6" THICK, COMPACTED TO 95% MAXIMUM DENSITY AS DETERMINED BY A.S.T.M. D998, OR GRADED AGGREGATE. GRANULAR BACK FILL MATERIAL MAY BE SUBSTITUTED FOR ALL OR PART OF COMPACTED BACK FILL.

TAMPAED BACK FILL SHALL BE FINELY DIVIDED JOB EXCAVATED MATERIAL FREE FROM DEBRIS, ORGANIC MATERIAL AND STONES, HAND PLACED IN UNIFORM LAYERS NOT MORE THAN 6" THICK AND TAMPAED AROUND CONDUIT PIPE. GRANULAR BACK FILL MATERIAL MAY BE SUBSTITUTED FOR ALL OR PART OF TAMPAED BACK FILL.

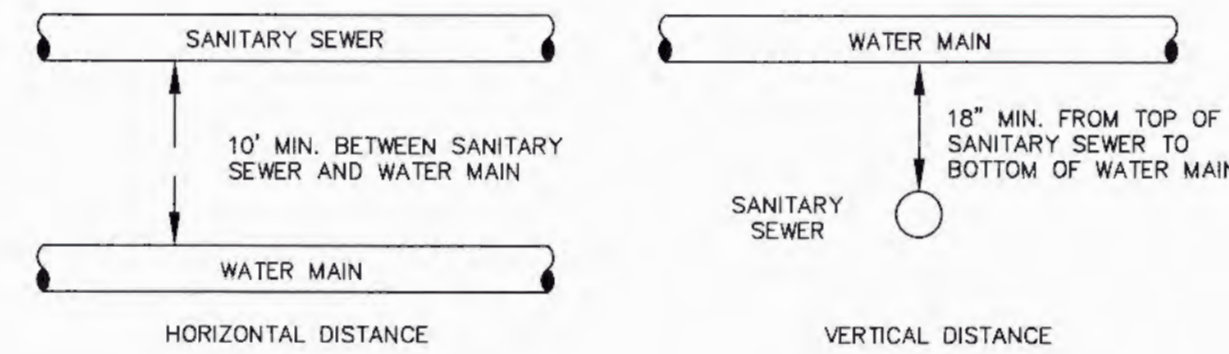
TRENCH BACK FILL SHALL BE AS REQUIRED IN THE "LAYING AND BACK FILL" SECTION OF THE DETAILED SPECIFICATIONS.

EMBED THE TYPE OF EMBEDDED TO BE USED SHALL BE AS SPECIFIED IN THE PLANS AND SPECIFICATIONS.

TRACER WIRE REQUIRED ON ALL WATER MAINS

WATER MAIN EMBEDDED
NOT TO SCALE

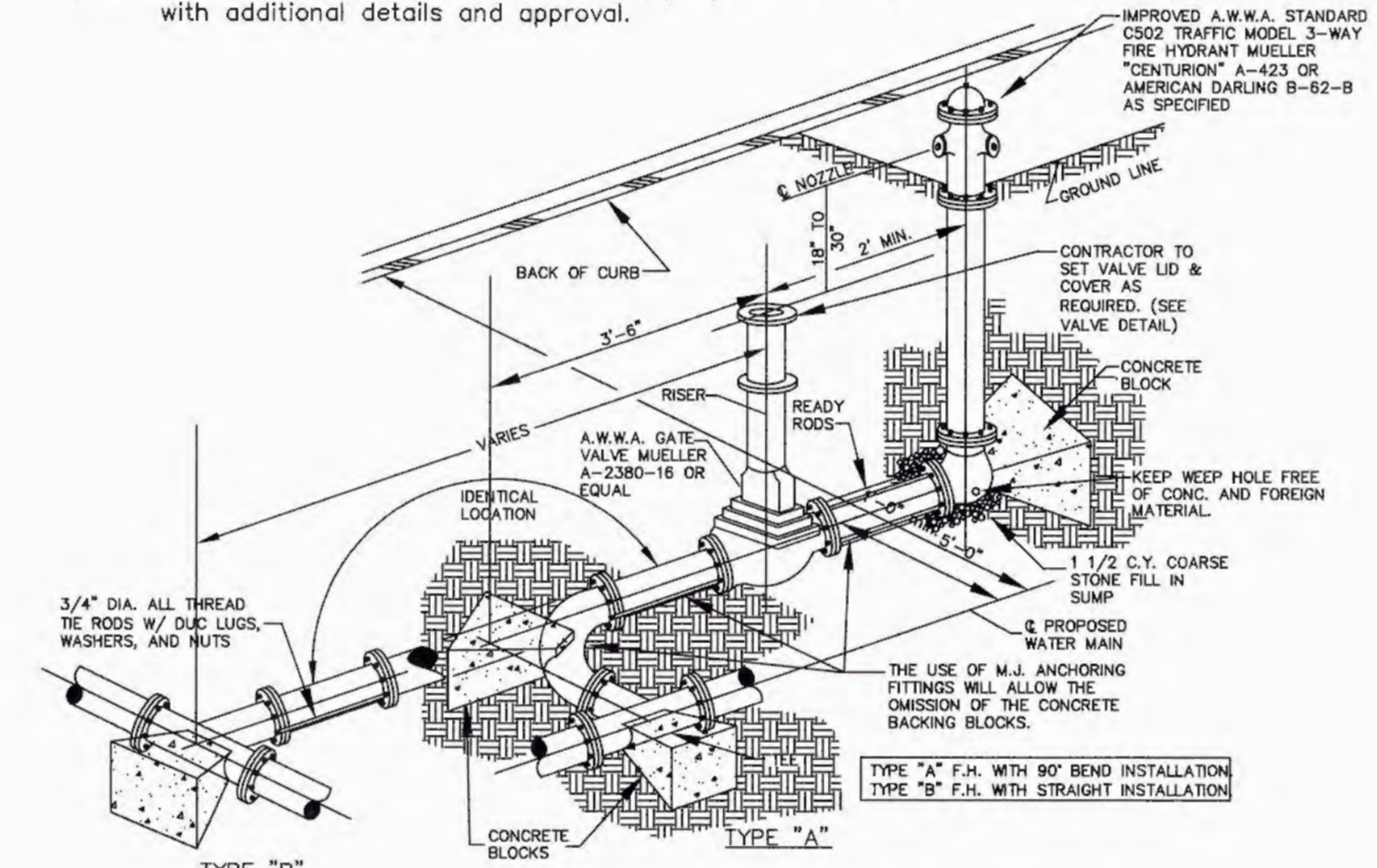
CITY OF O'FALLON
 ENGINEERING DEPARTMENT
 O'FALLON, MISSOURI
**WATER MAIN
 EMBEDDED**



TYPICAL WATER AND SEWER SEPARATION
NOT TO SCALE

CITY OF O'FALLON
 ENGINEERING DEPARTMENT
 O'FALLON, MISSOURI
WATER AND SEWER SEPARATION DETAIL

Note: Other connections such as anchor coupling are allowable with additional details and approval.



FIRE HYDRANT DETAIL
NOT TO SCALE

CITY OF O'FALLON
 ENGINEERING DEPARTMENT
 O'FALLON, MISSOURI
**FIRE HYDRANT
 DETAILS**

PROJECT TITLE:
 EL TIO PEPE MEXICAN RESTAURANT

315 WEST TERRA LANE
 O'FALLON, ST. CHARLES, MISSOURI 63366

Issue Date: 04/12/2017

ENGINEERING
 PLANNING
 SURVEYING

221 Point West Blvd.
 St. Charles, MO 63301
 636-928-5502
 FAX 636-928-1718



DISCLAIMER OF RESPONSIBILITY
 I hereby specify that the documents intended to be authorized by my seal are limited to this sheet, and I hereby disclaim any responsibility for all other drawings, specifications, estimates, reports or other documents or instruments relating to or intended to be used for any part or parts of the architectural or engineering project or survey.

REFERENCE
 DRAWING

REVISIONS

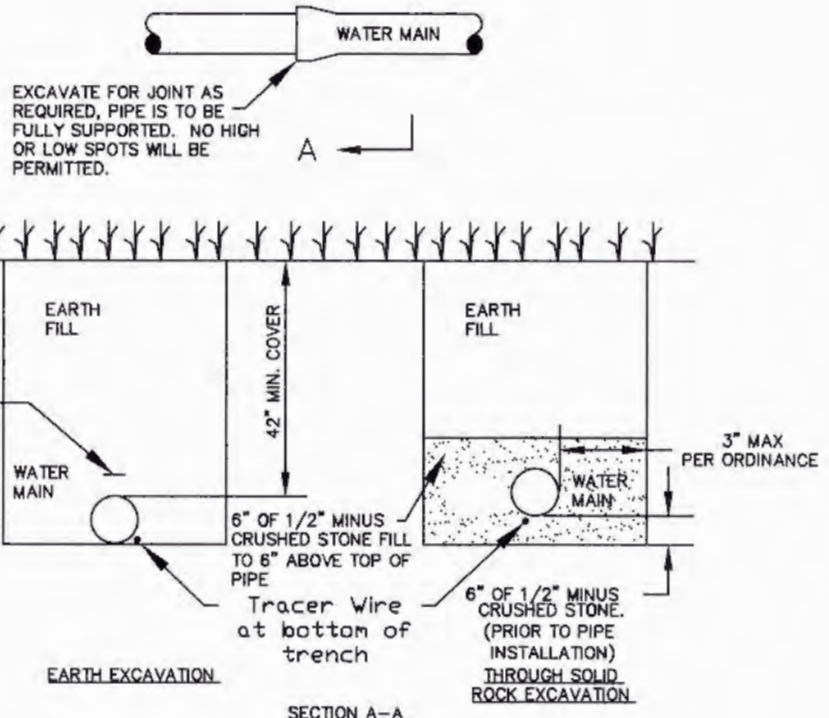
DATE	CITY COMMENTS
09/19/17	CITY COMMENTS
10/04/17	CITY COMMENTS

Developer / Owner:
 WR HOLMAN, LLC
 2 HICKORY HILL DRIVE
 O'FALLON, MISSOURI 63366
 (636) 734-1815

WATER SERVICE DETAILS

P+Z No. 33-14.01
 CUP No. 33-14.01.01
 Page No. 11 of 18

Ductile Iron Pipe installation shall follow the Ductile Iron Research Association (DIPRA) guide line.
 The Installation of PVC Pipe shall follow the Uni-Bell PVC Pipe Association Handbook of PVC Design and Construction.



TYPICAL WATER MAIN INSTALLATION DETAILS
NOT TO SCALE

CITY OF O'FALLON
 ENGINEERING DEPARTMENT
 O'FALLON, MISSOURI
**WATER MAIN
 INSTALLATION DETAIL**